



Munich Personal RePEc Archive

# **Cross-Section of a ‘Bubble’: Stock Prices and Dividends during the British Railway Mania**

Campbell, Gareth

Queen’s University Belfast

31 March 2010

Online at <https://mpra.ub.uni-muenchen.de/21821/>  
MPRA Paper No. 21821, posted 05 Apr 2010 02:21 UTC

# **Cross-Section of a 'Bubble': Stock Prices and Dividends during the British Railway Mania**

Gareth Campbell\*

Queen's University Belfast

\* Correspondence to: Gareth Campbell, Queen's University Management School, Queen's University Belfast, Belfast, BT7 1NN. Telephone: +44 28 9097 1368. Email: [gareth.campbell@qub.ac.uk](mailto:gareth.campbell@qub.ac.uk). With thanks to John Turner, Donal McKillop, Michael Moore, Kaddour Hadri, Fabio Braggion, Gerhard Kling, Peter Dunne, Michael Goldstein, and participants at the Economic History Society Annual Conference for their helpful comments.

## **Abstract**

Historical ‘bubbles’ are often attributed to mispricing, but the empirical analysis of such episodes has been limited. This paper examines a notable but academically neglected period, known as the British Railway Mania, using a new dataset and a cross-sectional methodology which is unique to the study of historical asset price reversals. The main finding is that the cross-sectional variation in stock prices, in every week of the sample, is explained by the cross-sectional variation in dividends, growth and risk, with no significant differences between the railways and non-railways. This implies that an economic bubble was not responsible for the rise and fall in the prices of railway assets at this time. (JEL G01, G11, G12, N23)

Asset price reversals have been a feature of financial markets for many centuries, with periods such as the Tulip Mania, the South Sea Bubble, and the Wall Street Crash being prominent examples. The ‘Dot-Com Bubble’ and ‘Housing Bubble’ have led to a renewed interest in such episodes, with popular commentary often associating them with irrationality and mispricing. The British Railway Mania of the 1840s has been amongst those periods which have attracted recent attention, with the *Economist* (2008) referring to it as ‘arguably the greatest bubble in history’.

This paper argues that an analysis of the British Railway Mania rejects the hypothesis that an economic bubble existed during this period. Although the Railway Mania may have been a bubble in the popular sense of the word, in that there was a substantial rise and fall in stock prices, it was not a bubble in the economic sense. Railway assets did not have a significantly higher price than non-railway assets, even at the market peak, after controlling for fundamental factors such as dividends, growth, and risk.

A new dataset has been collected from primary sources for this analysis, and a unique approach to the study of historical asset price reversals has been used, with a focus on the cross-sectional variation between different assets. The new dataset consists of weekly stock price and dividend data for every railway that was listed and operating during this period, and a sample of non-railways. The extent of the data collection has produced a sample size which enables a greater depth of analysis than has been possible in the study of most other episodes.

The focus of the paper is on a series of 417 cross-sectional regressions, one for each week of the period between 1843 and 1850, relating the cross-sectional variation in stock prices to the variation in dividends, growth and risk. A dummy variable distinguishes the differences between railway assets, which experienced a substantial asset price change, and non-railway

assets, which did not. Two functional forms of the relationship between prices and dividends are analysed to ensure robustness. Alternative specifications for the growth rate are also used to reveal the influence of dividend changes over different horizons.

The results suggest that the cross-sectional variation in dividends had a significant relationship with the cross-sectional variation in stock prices throughout the sample. There is also an indication that there was a significant relationship between prices and dividend growth during most of the period, as companies with a relatively high share price generally went on to experience higher dividend growth.

When controlling for just current dividends and risk factors, the railways had significantly higher share prices than non-railways for between 31 and 110 weeks, depending on the functional form used. However, when several periods of future growth are also controlled for, the railways did not have a significantly higher price than the non-railways in any week of the sample period. These results imply that the prices of railway shares were determined by fundamental factors such as dividends, growth and risk throughout the period known as the Railway Mania, and that an economic bubble was not the reason for railway share price changes.

This paper contributes to our knowledge of the British Railway Mania specifically, to our understanding of historical asset price reversals in general, and to the debate regarding the identification of bubbles. The quantitative analysis expands our knowledge of an important period which has received little attention from academic economists, and provides econometric evidence against the argument of Odlyzko (2010) that the Railway Mania was driven by ‘collective hallucinations and inefficient markets’.

More generally, the results provide further evidence against arguments that some historical asset price changes may have been due to irrationality (Dale et al., 2005). The conclusion that an economic bubble was not responsible for substantial price changes is consistent with research on the Tulip Mania of 1636 (Garber, 2001), the German stock market boom of 1927 (Voth, 2003), the Wall Street boom of the late 1920s (Donaldson and Kamstra, 1996), and the Nasdaq bull market of the 1990s (Pastor and Veronesi, 2006).

The use of a new methodology for studying historical episodes, which focuses on the cross-sectional variation in assets, illustrates that sustained time series price increases may be explained by changes in fundamental factors, rather than a bubble component. The evidence of consistency in cross-sectional pricing confirms that time series changes are not a conclusive indication of irrationality, and the importance of future growth illustrates the difficulty in detecting mispricing *ex-ante*. The results also suggest that a subsequent fall in prices may be due to a previously unexpected deterioration in fundamentals, and the finding that railway assets were not obviously mispriced at their peak implies that it may be difficult to forecast market crashes. This supports the argument of Bernanke (2002, 2010) and Mishkin (2008) that it is difficult to predict substantial price declines *ex-ante*, and consequently the use of monetary policy to avert the development and subsequent bursting of a bubble may be problematic.

This paper is organised as follows. Section 1 examines the related literature on the detection of bubbles, Section 2 provides a brief background to the Railway Mania, Section 3 discusses the data used, whilst Section 4 estimates the movement in stock prices and dividends during this period. Section 5 analyses the relationship between stock prices, current dividends, and risk during these years, Section 6 extends this analysis to account for dividend growth, with Section 7 being a brief conclusion.

## 1 Detecting Bubbles

As noted by O'Hara (2008), there has been some ambiguity about the meaning of the term 'bubble', with previous academic literature generally using two definitions. The popular usage of the term, per Kindleberger (2000, p.16), is an 'upward price movement over an extended range that then implodes', or what Bordo and Jeanne (2002) have described as an 'asset price reversal'. By using this first definition it is relatively easy to detect and label a bubble ex-post, simply by an observation of nominal prices. As will be demonstrated below, the Railway Mania can be classed as a bubble using this criteria, as there was a considerable stock price reversal during this period.

However, the economic definition of a bubble is a deviation from fundamental value (Flood and Hodrick, 1990, p.88). Using this second definition makes it much more difficult to definitively detect a bubble, as the concept of fundamental value is theoretical and not necessarily observed directly. Consequently, any apparent bubble component may be attributed to a mis-specification of the correct fundamental value by the researcher.

One approach to determining whether a certain period can be classified as an economic bubble has been to consider whether the expectations of growth or uncertainty implied by asset prices were unrealistic (see Pastor and Veronesi, 2006, and Voth, 2003). Various econometric tests have also been proposed for the detection of bubbles, including variance bound tests (Shiller, 1981), the comparison of the 'actual' relationship and a theoretical 'constructed' relationship between prices and dividends (West, 1987), co-integration tests which determine the orders of integration of prices and dividends (Diba and Grossman, 1988) and the relationship between the dividend yield and the level of dividends (Froot and Obstfeld, 1991). However, as argued by Gurkaynak (2008, p.182), these 'bubble tests do not do a good job of differentiating between mis-specified fundamentals and bubbles'.

Much of the previous work has tended to focus on the time series movements in the prices and dividends of a market index, but a change in the time series relationship between prices and dividends does not necessarily imply that investors were irrational. Changes in expectations, payout policy or the discount rate may affect the association between these variables over time.

Neither the implied expectations approach, nor time series analysis, focus on whether investors made rational decisions, given the cross-section of assets available for investment at a particular time. If investors were rational they should have ensured that at any time each asset reflected only the sum of discounted expected cash flows, with each asset priced consistently after controlling for factors such as dividends, growth and risk. By extension, assets in one industry should have been priced consistently with other industries, after accounting for such factors.

In the context of the Railway Mania, this would mean that if investors were rational and a bubble did not exist, the railways should have been priced consistently with the non-railways. Consistency of pricing would suggest that railway stock prices were determined by the same fundamental factors as non-railway stock prices, whilst inconsistency could suggest an irrational preference for the railways. This paper goes on to test the consistency of pricing during the Railway Mania by analysing whether railway stock prices were significantly different from other industries, after controlling for dividends, growth and risk.

## **2 Background to Railway Mania**

The first modern passenger railway was the Liverpool and Manchester, which was promoted in 1824, authorised by Parliament in 1826, and opened in 1830. Over the subsequent decade about another sixty railways were constructed, with most of the lines projected during a minor promotion boom in 1836 and 1837. However, further promotion was subdued until the



early 1840s. A period known as the Railway Mania then ensued, with share prices rising substantially from 1843 to 1845, and then falling steadily until 1850.

The initial phase of the Mania was associated with strong economic growth, and a low rate of interest, with the 3 per cent Consols, issued by the government, reaching par for the first time for over a century (*Economist*, April 13, 1844, p.674). A widespread reduction in fares, combined with the strong economic conditions, produced a rapid increase in passenger numbers and revenues for the railways. Between 1843 and 1846, first class traffic on the ten largest railways increased by 33 per cent, whilst second class and third class traffic increased by 68 per cent and 187 per cent respectively. This resulted in an overall increase in passenger receipts of 41 per cent, whilst receipts from goods traffic also increased, by 42 per cent (*Parliamentary Papers*, 1847, LXIII, p.179). These increases in traffic and receipts were achieved with a relatively small increase of 25 per cent in the mileage open of the largest lines.

As the period progressed the promotion of new railway companies increased, reaching unprecedented levels in the autumn of 1845, just as railway share prices peaked. Some estimates suggested that over one thousand new railways were promoted at this time (*The Times*, November 17, 1845, p.4), although only a small number of these were ever constructed. These promotions exposed existing railways to the threat of competition, and encouraged amalgamations, often resulting in established lines purchasing newer lines which tended to earn lower returns on capital.

The downturn in asset prices, beginning in the autumn of 1845, also coincided with the discovery of a potato blight, and defective harvest, which led to an economic downturn and the Irish Famine. A financial crisis then followed in 1847, which involved distress amongst

many banks and merchants, and led to a further reduction in economic growth (Evans, 1849). A feature of the downturn was the revelation of fraud amongst several large railways, but most of the allegations centred around companies controlled by just one chairman, George Hudson. Even amongst Hudson's companies the mis-statements appear to have begun after the Mania had already ended (*Railway Times*, 1849, pp. 441, 690, 1086). Receipts from traffic continued to grow during the latter half of the decade, but the mileage open on the railway network had expanded considerably, and the resulting increase in operating expenses and issue of equity reduced the returns available.

Commentary throughout the period suggested that dividends were regarded as an important consideration in the valuation of railway stocks. For example, the *Economist* (November 8, 1845, p.1109) noted that 'with regard to the finished and dividend paying lines, they are of course calculated so as to yield a given rate of interest which must always have some reference to the rate which other securities yield, and so far the price of shares should fluctuate with other securities.' Similarly, an investment pamphlet entitled the *Short and Sure Guide to Railway Speculation* (Anon., 1845, pp.5-6) advised that 'as regards the purchase of shares in the established lines we have simply to compare the market price of the share with the dividend which it pays.' It went on to note that 'taking the value of money at four per cent, the shares in a railway which pays six per cent per annum are worth £150 each; or in one which pays ten per cent they are worth £250 each. If bought below these prices, the purchaser is receiving, *pro tanto*, a better rate than four per cent, and he will accept this better rate, in proportion to any doubt he may have with respect to the dividend being maintained.'

### **3 Data**

To improve our understanding of the Railway Mania, a unique and comprehensive dataset has been constructed, by inputting the original share price tables published in a weekly

newspaper, the *Railway Times*, between 1843 and 1850. As this paper focuses entirely on those companies which were capable of paying dividends throughout this period, only the railways in operation at the beginning of the Mania, and the firms which resulted from mergers involving these lines, are included. The share price dataset was supplemented with data on dividends, collected from the *Course of the Exchange*, an official stockbroker list for the London stock market.

There were 64 railways listed in the *Railway Times* in the first week of 1843. However, the *Course of the Exchange* contained dividend data on only 41 of these railways. Due to a high number of mergers and acquisitions, the number of railway companies fell throughout the sample. If an established railway, in existence at the start of 1843, participated in a merger then the new company was also treated as an established railway and it was assumed that investors in the original company went on to receive the dividend of the merged firm. By the end of 1850 there were 27 established railways listed in the *Railway Times*, and dividend data was available from the *Course of the Exchange* for 24 of these railways.

Data on the twenty largest non-railway companies by market capitalisation was also obtained from the *Course of the Exchange*. These twenty companies represented 45.2 per cent of total non-railway market capitalization at the beginning of 1843, suggesting that they give a good representation of the overall market. There are six banks, five insurance companies, three canals, three docks, two gas, light, and coke companies, and one waterworks company included. Bank of England stock and East India stock have been excluded from the non-railway sample as they were issued by companies with a strong relationship to the government.

The number of shares in issue ( $N$ ), the share price ( $P$ ) and the par value ( $Z$ ) of each of the securities was recorded for each of the 417 weeks in the sample period. If an asset did not trade during a particular week then the share price was assumed to be the last observed price. The par value of a share was the total amount of equity which shareholders had paid to the company for that security. The share price/par ratio ( $P/Z$ ) has been calculated for each security for each week, and is used to standardise prices in a manner which is similar to the market to book ratio.

During this period dividends ( $D$ ) were also generally expressed in terms of par value, with the dividend/par ratio ( $D/Z$ ) providing an estimate of the shareholders' return on their equity investment. Dividend growth has been calculated as the change in the dividend/par ratio,  $\Delta(D/Z)$  between different periods. To enable the analysis of dividend changes beyond the main sample period the dividend rates of companies until 1855 were included in the dataset.

The dividend yield ( $D/P$ ) has also been calculated for each security, for each week of the sample, by computing the dividend/price ratio. The size ( $S$ ) of the company has been measured as the market capitalisation of the firm, calculated as the number of shares in issue multiplied by the price of each share. The beta ( $B$ ) of each firm has been estimated for each company for each year, by regressing the weekly returns of each asset minus the risk free rate, against the weekly returns of the market portfolio minus the risk free rate. The market portfolio has been approximated by the non-railways' market index, and the risk-free rate has been approximated by the yield on 3 per cent Consols, which were government debt perpetuities. A railway dummy variable ( $R$ ) has also been created, which equals one when the company was a railway, and zero otherwise.

Only those companies which had been traded, and had an observable share price, could be included in the analysis, which reduced the sample size mainly in the early months of 1843. For calculations involving the price/par ratio three outliers with extremely high dividend/par ratios, defined as being above 15 percent, were excluded as small changes in their price gives the appearance of shifts in the estimated coefficients, which is misleading with regards the rest of the sample. However, robustness tests described at the end of the paper illustrate that the key results remain the same when they are included. For the second functional form, explaining variations in the dividend yield, these companies have been included as they did not have extreme dividend yields, but observations where a company had a zero dividend yield are excluded as such observations do not reveal any information about pricing.

The average number of companies analysed each week in the regressions involving the share price/par ratio was 40.2, which over the 417 weeks of the sample results in 16,770 observations. For those regressions involving the dividend yield, there were an average of 39.6 companies included per week, which involved a total of 16,501 observations over the sample. When periods of future dividend growth are included, these figures are reduced slightly due to data availability.

## **4 Movement of Stock Prices and Dividends**

Weekly market indices for the subset of companies included in the analysis in this paper, namely the established railway companies and the non-railway companies for which share price and dividend data are available, have been constructed and are plotted in Figure 1. In each case the market return has been calculated on a weekly basis by weighting the capital gains of each company by its market capitalisation at the end of the preceding week. A weekly market index representing all railway companies, which includes all ordinary equity shares issued by railways listed in Great Britain and Ireland, is also shown in Figure 1.

<<INSERT FIGURE 1>>

It can be seen that the index representing all railway companies shows the greatest increase during the Mania, rising from a base of 1,000 in January 1843 to a level of 1,984 on August 8, 1845. The index representing just the established railways reached a peak of 1,718 on the same day, while the non railways index had risen to just 1,152. Both the all railway and established railway indices then fell substantially to the end of November 1845, declining by 18.2 and 18.5 per cent respectively from their peaks. During the same period the non-railways fell by 5.9 per cent. All of the indices then stabilised throughout 1846, before beginning a steady decline from January 1847 onwards, with the sample ending in 1850 with the all railway index at 843, the established railway index at 727, and the non railways at 1042. These indices reveal that although there was some additional returns from the new railways, the movements in the established railways was the main determinant of price movements within the railway industry. They experienced a substantial rise and fall in prices during the period between 1843 and 1850, but the non-railways remained fairly steady.

Whilst the prices of railway shares changed dramatically, railway dividends also rose and fell substantially. As can be seen from Figure 2, the dividends, as a percentage of par value, paid by established railways at the beginning of 1843 averaged 4.3 per cent. They then increased steadily, reaching a peak of 7.2 per cent in July 1847, before falling to just 2.9 per cent by the end of 1850. Higher dividends were evident in almost every one of the major railways during the boom, and dividend declines were almost universal during the downturn. The dividends paid by the non-railways were much less volatile, beginning 1843 at an average of 6.4 per cent, and reaching 6.6 per cent by 1844, but they then fell slightly, ending 1850 at 6.1 per cent. It is interesting to note that the peak in railway share prices occurred almost two years

before the peak in railway dividends, perhaps suggesting that investors were including estimates of future dividend changes into prices before the rates had actually changed.

<<INSERT FIGURE 2>>

The dividend/price ratios of the railway and non-railway industries are plotted in Figure 3. The railway industry dividend yield has been calculated as the total dividends paid by all the established railways as a fraction of the total market capitalisation of those railways, with the non-railways calculated in a similar manner. At the beginning of 1843 the dividend yields of the railway and non-railway industries were close, being 4.6 per cent and 4.8 per cent respectively. Although railway prices and dividends both rose and then fell during the sample period, prices seem to have moved in advance of dividends, resulting in a changing dividend yield. The railway industry dividend yield initially fell, reaching a minimum of 3.3 per cent in February 1844, but then rose substantially, reaching a peak of 7.3 per cent in October 1848. During the same period, the non-railway industry dividend yield remained between 4.2 and 5.2 per cent.

<<INSERT FIGURE 3>>

Total return indices have also been constructed, which combine both capital gains and dividends, and are shown in Figure 4. The established railways total return index reaches a peak of 1,897 in August 1845, and ends the sample at a level of 1,056, implying that even after dividends have been included the total return to investors in established railways was close to zero between 1843 and 1850. In contrast, the non-railways finish the sample period at 1,513, which was the peak for the sample period.

<<INSERT FIGURE 4>>

Descriptive statistics for each of the key variables included in the subsequent regression analysis have been reported in Table 1, by industry and by year. For the railways both the mean share price/par ratio and dividend/par ratio initially rise and then decline, whilst the non-railways show less movement over time. The non-railways consistently have both a higher price/par and dividend/par ratio throughout the period, but much of this is due to three non-railway outliers with very high ratios, which have been excluded from the price/par regressions. When these are removed the average price/par ratio of the non-railways falls from about 2.0 to 1.3, whilst the average dividend/par ratio falls from about 10.0 to 5.8 per cent for the whole period.

<<INSERT TABLE 1>>

The mean dividend yield of the railways also shows more change over time than that of the non-railways, with the railways initially having a relatively lower yield, before a dramatic rise gave them a relatively higher yield in 1847 and 1848. As a zero dividend yield does not reveal anything about prices, those companies with a zero yield are excluded from the dividend yield regressions. When these companies are removed the average yield for the whole period for the railways rises from 3.9 to 4.7 per cent, whilst the non-railways remain at 4.9 per cent.

The average beta of the railways rose and fell, but remained below one throughout the period, reflecting the weakness of the relationship between the movement in railway shares and the non-railways. Due to the possibility of errors-in-variables in the beta estimate, the subsequent regression analysis has been repeated without the inclusion of the beta variable and the key results remain the same, as discussed at the end of the paper.



The size variable reveals that the average market capitalisation of the railways was similar to that of the non-railways at the start of the period. However, the market capitalisation of the railways increased at a much faster rate during the early years of the boom, reflecting both higher prices and more shares being issued. This resulted in the railways being larger than the non-railways for most of the period.

## **5 Co-movements of Stock Prices and Current Dividends**

A time series approach to analysing the relationship between stock prices and dividends would consider whether prices and dividends cointegrate. Tests for panel cointegration, based on Westerlund (2007) and Persyn and Westerlund (2008), are shown in Table 2. Four tests are considered, each of which tests the null hypothesis of no cointegration by analysing whether the error correction term in a conditional panel ECM model is equal to zero. Tests  $G\alpha$  and  $G_T$  consider an alternative hypothesis that at least one unit is cointegrated, whilst tests  $P\alpha$  and  $P_T$  consider an alternative hypothesis that the panel is cointegrated as a whole. The results suggest that although there is evidence of cointegration between prices and dividends for the non-railway assets, there is no cointegration for the railway assets.

<<INSERT TABLE 2>>

However, the lack of cointegration with regards the railways does not necessarily imply that investors were acting irrationally. Dividends for a particular company may change slowly over time, but share prices should be updated immediately to reflect expectations of the future. If expectations move in advance of actual dividends then the relationship between prices and current dividends may not be stable, and the time series may not cointegrate. This is less of an issue for the non-railways as their dividends and prices were relatively steady, but it is of importance for an industry such as the railways where dividends were growing.

Consequently, a time series approach to analysing asset price reversals involving growth industries is not sufficient, and may even be misleading.

A more suitable approach is to examine the cross-section of assets at particular times, as this can reveal whether railways were priced consistently with non-railways given their respective dividends, growth and risk. This paper analyses the pricing of assets during the Railway Mania using this cross-sectional methodology, with two functional forms being considered to ensure robustness. The first approach, shown in Equation 1, relates each asset's share price ( $P$ ) with its dividend ( $D$ ), both standardised by the par value ( $Z$ ). Two risk factors are controlled for, namely the firm's Beta ( $B$ ), and Size ( $S$ ). A dummy for the Railway industry ( $R$ ) is included to determine whether the railways were priced differently from the non-railways.

For week = t (1)

$$\frac{P_{i,t}}{Z_{i,t}} = \beta_0 + \beta_1 \frac{D_{i,t}}{Z_{i,t}} + \beta_2 R_i + \beta_3 B_{i,t} + \beta_4 S_{i,t} + \varepsilon$$

The second approach, shown in Equation 2, expresses the share price and dividend as a Dividend Yield ( $D/P$ ), and also controls for Beta ( $B$ ) and Size ( $S$ ). A dummy for the Railway industry ( $R$ ) is again included.

For week = t (2)

$$\frac{D_{i,t}}{P_{i,t}} = \beta_0 + \beta_1 R_i + \beta_2 B_{i,t} + \beta_3 S_{i,t} + \varepsilon$$

Due to the possibility of spurious correlation any test across time could be misleading. To avoid this problem, a cross-sectional regression is estimated for each week. As each week's

regression is independent of every other week, there are no multiple observations of any company in any regression. Table 3 reports the coefficients and standard errors for selected weeks, with one regression for the start of the period, the last week of each year and for the peak in prices on August 8, 1845. This analysis was repeated for each of the 417 weeks of the sample period, with the last column reporting the number of weeks during which each variable was significant.

<< INSERT TABLE 3 >>

It can be seen from Panel A of Table 3, that the coefficient of the dividend variable is significantly greater than zero on 399 out of the 417 weeks in the sample. Panel A of Figure 5 illustrates this finding, and charts the relationship between the standardised dividend and share price for each week, with a 95 per cent confidence interval constructed from each week's robust standard errors.

<< INSERT FIGURE 5 >>

Panel A of Table 3 suggests that using Equation 1, the railway dummy was significant on 192 weeks during the sample. This represents 31 weeks when the railway dummy was significantly greater than zero, implying that the railways may have had a significantly higher price, and 161 weeks when the railway dummy was significantly less than zero, implying a relatively lower price, given their current dividends and risk factors. Panel A of Figure 6 shows that the railway dummy rises throughout the first few years of the sample, and is significantly positive for periods between 1844 and 1846, before falling and becoming significantly negative for a sustained period between 1847 and 1850.

<< INSERT FIGURE 6 >>

Panel B of Table 3 reveals that when dividend yields are analysed using Equation 2, the railway dummy was significant on 148 weeks. This consists of 110 weeks when the railway dummy was significantly less than zero, which in this specification implies a relatively higher price, and 38 weeks when the railway dummy was significantly greater than zero, implying a relatively lower price. Panel A of Figure 7 shows that the railway dummy was significantly negative throughout most of 1844 and 1845, before rising during the latter half of the decade.

<< INSERT FIGURE 7 >>

The above results suggest that the current dividend rate was a highly significant factor in determining the prices of assets during the Railway Mania. Nevertheless, although changes in the current dividend rate may explain part of the increase in the nominal prices of railway shares, it cannot fully explain all of the changes. Railways appear to have had a significantly higher share price for a period during the boom, and a significantly lower share price for a period during the downturn, after accounting for current dividend rates. However, rather than reflecting mispricing, these differences may reflect expectations of dividend growth, which investors may also have considered in their valuations.

## **6 Stock Prices and Future Dividends**

One approach to considering the relationship between prices and future dividends has been to illustrate the association between the dividend yield and future dividend growth as per Campbell and Shiller (1998). Figure 8 plots the relationship between the dividend yield and the next period's dividend growth for each company in the sample, with one observation per company at the end of each of the sixteen half-years in the sample. The results suggest that there was a negative correlation which would imply that companies with a low dividend yield, meaning a relatively high price, went on to experience relatively higher growth.

<< INSERT FIGURE 8 >>

To estimate the extent of mispricing whenever future dividend growth has been accounted for, the cross-sectional regressions discussed in the previous section have been extended. By considering the possibility that investors' expectations of the next  $n$  half-years of dividend changes were accurate, it is possible to estimate whether railway shares were mispriced, given expectations of dividend growth.

The first approach, explaining the share price/par ratio per Equation 1, was extended to consider the impact of including the next  $n$  half-years of dividend changes. A railway dummy ( $R$ ) was again included to estimate the proportion of the share price/par ratio ( $P/Z$ ) of railway companies which could not be explained by the current dividend/par ratio ( $D/Z$ ), future changes in dividends,  $\Delta(D/Z)$ , beta ( $B$ ) and size ( $S$ ), as shown in Equation 3. This approach was repeated with the inclusion of varying numbers of future changes in dividends.

For week =  $t$  (3)

$$\frac{P_{i,t}}{Z_{i,t}} = \beta_0 + \beta_1 \frac{D_{i,t}}{Z_{i,t}} + \beta_2 E_t \left( \Delta \frac{D_{i,t+n}}{Z_{i,t+n}} \right) + \beta_3 R_i + \beta_4 B_{i,t} + \beta_5 S_{i,t} + \varepsilon$$

The second approach, explaining the dividend yield per Equation 2, was also extended to consider the impact of the next  $n$  half-years of dividend changes. A railway dummy ( $R$ ) was again included to estimate the proportion of the dividend yield ( $D/P$ ) of railway companies which could not be explained by future changes in dividends,  $\Delta(D/Z)$ , beta ( $B$ ) and size ( $S$ ), as shown in Equation 4. This approach was repeated with the inclusion of varying numbers of future changes in dividends.

For week = t

(4)

$$\frac{D_{i,t}}{P_{i,t}} = \beta_0 + \beta_1 E_t \left( \Delta \frac{D_{i,t+n}}{Z_{i,t+n}} \right) + \beta_2 R_i + \beta_3 B_{i,t} + \beta_4 S_{i,t} + \varepsilon$$

The number of weeks that each variable was significant in each specification is reported in Table 4. Panel A reports regressions explaining the share price/par ratio ( $P/Z$ ), and reveals that when future dividend changes are controlled for, the current dividend/par ratio was significant in all 417 weeks of the sample, regardless of the number of future dividend changes included. This can be seen from the graphical analysis in Panel B of Figure 5 which also suggests that the size of the dividend coefficient remained relatively steady once future growth is accounted for. The next half-year of dividend growth was significant for between 250 and 312 weeks, with the second half-year of dividend growth significant for between 136 and 210 weeks, depending on the number of other changes included. Dividend changes beyond this were significant in between 81 and 153 weeks. The number of weeks that the railway dummy is significant declines from 192 weeks to just 18 weeks as additional dividend growth is included.

<< INSERT TABLE 4 >>

In Panel B of Table 4 the number of weeks that each variable is significant when explaining the dividend yield is reported. The next half-year of dividend growth is significant for between 283 and 349 weeks, depending on the number of future changes included, with the second half-year of dividend growth significant for between 173 and 233 weeks. Further dividend changes are significant for between 144 and 193 weeks. The number of weeks that the railway dummy is significant declines from 148 weeks to between 11 and 12 weeks, when three or four future dividend changes are included.

Tables 5 and 6 analyse the number of weeks that the railway dummy is significant, by year, and considers whether the dummy implied that railways were overpriced or underpriced, given that the other variables had been controlled for. In Table 5, analysing the share price/par ratio regressions, the railways were defined as overpriced in a particular week if the railway dummy was significantly greater than zero during that particular week, and underpriced if the railway dummy was significantly less than zero during that week. The total weeks of overpricing and underpricing for each year were then calculated.

<< INSERT TABLES 5 AND 6 >>

When zero years of dividend growth are included, the railways appear to have been overpriced on 31 weeks of the sample, but when between three and six half-years of dividend growth are included this apparent overpricing is entirely eliminated. A period of underpricing remains, but this is relatively small in size and an unreported analysis suggests it would be completely eliminated if the extent of dividend declines after 1847 had been just one percentage point more than actually occurred. The graphical analysis in Panel B of Figure 6 shows that when four half-years of dividend growth are accounted for, the coefficient of the railway dummy remains close to zero throughout the period, and is never significantly greater than zero.

Using the second approach, of analysing differences in dividend yields, the railways are estimated to be overpriced during a particular week when the railway dummy is significantly less than zero, and underpriced when the dividend yield of the railways was significantly higher than the non-railways. Results are shown in Table 6 for the number of weeks of overpricing and underpricing when varying numbers of half-years of dividend growth are accounted for.

When no future dividend growth is accounted for, the railways appear to be significantly overpriced for 110 weeks, but this is reduced to zero weeks when four half-years of dividend growth are accounted for. There is a small amount of underpricing remaining near the end of the sample, but this would also have been entirely eliminated if dividends had fallen by an additional one percentage point after 1847. Panel B of Figure 7 shows that when the next four half-years of dividend growth are considered, the coefficient of the railway dummy remains very close to zero throughout the boom in prices, and is only significantly different from zero for a brief period during the downturn.

To ensure robustness, additional variations of the analysis have also been considered. The share price/par regressions have been repeated with the inclusion of the three non-railway outliers which had extremely high dividend/par ratios. As shown in Figure 9 the key results remain the same, with the dividend variable significant during every week, and the railway dummy suggesting that the railways were not significantly overpriced in any week during the sample. The main difference is that the coefficients and standard errors are slightly more volatile over time, reflecting the impact that small changes in these outliers had.

Additional robustness checks also confirm the key results, although not tabulated separately. Due to the possibility of errors-in-variables in the estimation of beta the analysis has been repeated without this variable. In both the share price/par and the dividend yield regressions the key finding of zero weeks of overpricing remains when four periods of dividend growth are controlled for. An analysis was also carried out excluding four railways where allegations of fraud were made in the aftermath of the Mania. The results continue to suggest no overpricing for the share price/par regressions throughout the period. The dividend yield regressions continue to suggest no overpricing during the boom, but there may have been five weeks of overpricing during 1849, when the allegations of fraud were revealed.



When the dividend growth variables are expressed in terms of annual growth, rather than the semi-annual growth discussed above, the results when two years of growth are included suggest between 0 and 2 weeks of overpricing depending on the functional form. When the dividend growth during the next two years is expressed as a single variable the results suggest between 0 and 3 weeks of overpricing depending on the functional form.

When a large number of dividend growth variables are included there is a suggestion that the apparent overpricing of the railways begins to re-appear. For example, with five years of dividend growth expressed in semi-annual variables, there appears to be between 9 and 17 weeks of overpricing depending on the functional form used. This may indicate that investors were able to successfully forecast short-term dividend changes, but did not expect the longer-term changes which occurred. This is consistent with the finding that the peak in prices occurred about two years before the peak in dividends.

## **7 Conclusion**

Using a comprehensive dataset of share prices and dividends for established railways and non-railways this paper has found that dividends remained extremely important to the valuation of shares throughout the period 1843 to 1850, which included the Railway Mania and the subsequent downturn. The cross-sectional variation in dividends had a positive and significant relationship with the cross-sectional variation in share prices in every week during this period. There was also a highly significant relationship between current prices and future dividend growth, suggesting that investors were able to incorporate short-term future changes in dividends into their valuations.

When only the current dividend rate and risk factors were controlled for, the railways appear to have been overpriced for a considerable period during the boom, with estimates ranging from between 31 to 110 weeks depending on the functional form used in the estimation.

However, when short-term future changes in dividends are included the apparent overpricing is entirely eliminated. This suggests that, given their fundamentals, railways were priced consistently with non-railways during this period, which could be interpreted to mean that the Railway Mania was not a bubble in the economic sense.

This paper, which has examined the sustained rise and fall in the share prices of the established railways, has an important implication for the current debate on ‘bubbles’. It suggests that even on occasions where there is a sustained increase in asset prices it may be possible to argue that investors are acting rationally, as these high prices may reflect growth in fundamentals. A subsequent fall in asset prices may be caused by a previously unexpected decline in fundamentals. This supports the view put forward by Bernanke (2002, 2010) and Mishkin (2008) that if regulators do not have more information than other market participants, it is very difficult for them to forecast a market crash ex-ante which increases the risk of using monetary policy tools to intervene in the asset markets.

## References

- Anon. 1845. *A Short and Sure Guide to Railway Speculation, a Few Plain Rules How to Speculate with Safety and Profit in Railway Shares*, Effingham Wilson.
- Bernanke, B. S. 2002. Asset-Price 'Bubbles' and Monetary Policy. Speech delivered at the New York Chapter of the National Association for Business Economics, New York, October 15.
- Bernanke, B. S. 2010. Monetary Policy and the Housing Bubble. Speech delivered at the Annual Meeting of the American Economic Association, Atlanta, Georgia, January 3.
- Bordo, M. D. & Jeanne, O. 2002. Monetary Policy and Asset Prices: Does 'Benign Neglect' Make Sense? *International Finance*, 5(2):139-64.
- Brunnermeier, M.K. and Julliard, C. 2008. Money Illusion and Housing Frenzies. *Review of Financial Studies* 21(1):135-180.
- Campbell, J.Y. and Shiller, R.J. 1988. The Dividend-Price Ratio and Expectations of Future Dividends and Discount Factors. *Review of Financial Studies* 1(3):195-228.
- Campbell, J.Y. and Shiller, R.J. 1998. Valuation Ratios and the Long-Run Stock Market Outlook, *Journal of Portfolio Management* 24(2):11-26
- Course of the Exchange. 1843-1850. Archive in British Library.
- Dale, R., Johnson, J.E.V. and Tang, L. 2005. Financial Markets can Go Mad: Evidence of Irrational Behaviour during the South Sea Bubble. *Economic History Review* 58(2):233-271.
- DeMarzo, P.M., Kaniel, R. and Kremer, I. 2008. Relative Wealth Concerns and Financial Bubbles. *Review of Financial Studies* 21(1):19-50.
- Diba, B. and Grossman, H. 1988. Explosive Rational Bubbles in Stock Prices? *American Economic Review* 78:520-30.
- Donaldson, R.G. and Kamstra, M. 1996. A New Dividend Forecasting Procedure that Rejects Bubbles in Asset Prices: The Case of 1929's Stock Crash. *Review of Financial Studies*, 9:333-383.
- Economist. 1844-1845. Archive in British Library.
- Economist. 2008. The Beauty of Bubbles, December 18.
- Evans, D.M. (1849), *The Commercial Crisis, 1847-1848*, David and Charles, Devon.
- Flood, R.P. and Hodrick, R.J. 1990. On Testing for Speculative Bubbles. *The Journal of Economic Perspectives* 4(2), 85-101.
- Froot, K.A. and Obstfeld, M. 1991. Intrinsic Bubbles: The Case of Stock Prices. *American Economic Review* 81(5):1189-1214.

- Garber, P.M. 2001. *Famous First Bubbles, the Fundamentals of Early Manias*, MIT Press.
- Gurkaynak, R.S. 2008. Econometric Tests of Asset Price Bubbles: Taking Stock. *Journal of Economic Surveys*, 22(1):166-186.
- Kindleberger, C.P. 2000. *Manias, Panics, and Crashes: A History of Financial Crises*, John Wiley and Sons.
- Odlyzko, A. 2010. *Collective Hallucinations and Inefficient Markets: The British Railway Mania of the 1840s*, University of Minnesota.
- O'Hara, M. 2008. Bubbles: Some Perspectives (and Loose Talk) from History. *Review of Financial Studies* 21(1):11-17.
- Parliamentary Papers. 1847. Summary of Returns, Showing the Number of Passengers Carried on 63 railways of the United Kingdom during the Year ending 30 June 1846, the Fares of each Class, and the Receipts from each Class of Passengers, and for Goods, LXIII, p.179.
- Parliamentary Papers. 1851. Railways. Return, showing the Number of Passengers Conveyed on All the Railways in England and Wales, Scotland, and Ireland, respectively, during the half-year ending the 30th June 1850, LI, p.229.
- Pástor, L. and Veronesi, P. 2006. Was there a Nasdaq Bubble in the Late 1990s? *Journal of Financial Economics* 81(1):61-100.
- Pástor, L. and Veronesi, P. 2009. Technological Revolutions and Stock Prices. *American Economic Review* 99(4):1451-1483.
- Persyn, D. and Westerlund, J. 2008. Error Correction Based Cointegration Tests for Panel Data. *Stata Journal* 8(2):232-241
- Povel, P., Singh, R. and Winton, A. 2007. Booms, Busts, and Fraud. *Review of Financial Studies* 20(4):1219-1254.
- Railway Times. 1843-1850. Archive in British Library.
- Shiller, R. 1981. Do Stock Prices Move Too Much to be Justified by Subsequent Changes in Dividends? *American Economic Review* 71:421-436.
- Voth, H.J. 2003. With a Bang, not a Whimper: Pricking Germany's 'Stock Market Bubble' in 1927 and the Slide into Depression. *Journal of Economic History* 63(1):65-99.
- West, K. 1987. A Specification Test for Speculative Bubbles, *Quarterly Journal of Economics* 102:553-80.
- Westerlund, J. 2007. Testing for Error Correction in Panel Data. *Oxford Bulletin of Economics and Statistics* 69: 709-748.

**Table 1: Descriptive Statistics of Companies by Industry on Selected Dates**

			Jan 6, 1843	Dec 29, 1843	Dec 27, 1844	Aug 8, 1845	Dec 26, 1845	Dec 25, 1846	Dec 31, 1847	Dec 29, 1848	Dec 28, 1849	Dec 27, 1850	
Number of Companies	Established Railways	N	22	26	24	25	24	22	19	23	22	23	
	Non-Railways	N	20	20	20	20	20	20	20	20	20	20	
Price/Par ratio (P/Z)	Established Railways	Mean	0.90	1.15	1.40	1.70	1.56	1.30	0.95	0.77	0.57	0.68	
		St. Dev.	0.57	0.63	0.59	0.56	0.47	0.34	0.30	0.30	0.33	0.40	
		Max	2.10	2.40	2.58	2.80	2.40	1.94	1.48	1.49	1.40	1.67	
		Min	0.26	0.40	0.46	0.68	0.56	0.50	0.29	0.16	0.04	0.12	
	Non-Railways	Mean	2.05	2.24	2.32	2.28	2.02	1.93	1.79	1.64	1.96	2.03	
		St. Dev.	1.97	2.36	2.26	2.20	1.74	1.72	1.73	1.60	2.43	2.46	
		Max	8.00	10.00	10.00	10.00	8.00	8.00	8.00	8.00	8.00	12.00	12.00
		Min	0.84	0.84	0.84	0.88	0.68	0.53	0.40	0.43	0.63	0.66	
Dividend/Par ratio (D/Z)	Established Railways	Mean	4.11%	3.81%	4.66%	5.23%	5.35%	5.57%	5.58%	5.33%	2.95%	2.27%	
		St. Dev.	3.16%	3.27%	3.19%	3.35%	3.42%	3.38%	2.77%	2.30%	2.94%	1.91%	
		Max	10.00%	10.00%	10.00%	10.00%	10.00%	12.10%	10.00%	10.00%	10.00%	10.00%	7.00%
		Min	0.00%	0.00%	0.00%	0.00%	0.00%	0.00%	0.00%	0.00%	0.00%	0.00%	0.00%
	Non-Railways	Mean	10.16%	10.33%	10.35%	10.15%	10.20%	9.75%	9.40%	9.35%	9.94%	9.64%	
		St. Dev.	10.76%	10.67%	10.66%	10.74%	10.71%	9.92%	10.14%	10.17%	11.30%	10.80%	
		Max	40.00%	40.00%	40.00%	40.00%	40.00%	40.00%	40.00%	40.00%	50.00%	50.00%	
		Min	3.00%	4.00%	4.50%	4.00%	4.50%	5.00%	0.00%	0.00%	3.00%	4.00%	
Dividend Yield (D/P)	Established Railways	Mean	4.74%	3.02%	3.17%	2.78%	3.14%	4.02%	5.57%	6.89%	4.28%	2.85%	
		St. Dev.	3.14%	1.80%	1.53%	1.57%	1.76%	2.03%	1.99%	3.06%	3.89%	1.74%	
		Max	11.92%	7.00%	4.83%	4.88%	5.26%	7.96%	8.86%	16.84%	14.04%	5.19%	
		Min	0.00%	0.00%	0.00%	0.00%	0.00%	0.00%	0.00%	0.00%	0.00%	0.00%	
	Non-Railways	Mean	4.81%	4.69%	4.43%	4.30%	4.84%	5.17%	4.94%	5.36%	5.17%	4.95%	
		St. Dev.	1.02%	1.03%	1.18%	1.08%	1.66%	2.27%	1.87%	2.34%	1.88%	1.65%	
		Max	7.11%	7.14%	7.27%	6.86%	8.89%	11.43%	10.00%	10.97%	10.81%	10.81%	
		Min	2.08%	2.98%	2.70%	2.66%	2.78%	2.53%	0.00%	0.00%	2.96%	2.84%	
Beta (B)	Established Railways	Mean	0.27	0.37	0.62	0.68	0.60	0.75	0.12	-0.15	0.00	-0.14	
		St. Dev.	0.83	0.73	2.19	2.53	2.55	1.16	0.47	2.22	1.08	1.17	
		Max	2.17	2.17	5.75	5.46	5.46	3.62	1.19	7.07	1.39	0.96	
		Min	-1.27	-0.88	-3.87	-9.34	-9.34	-0.83	-0.99	-7.03	-3.77	-4.11	
	Non-Railways	Mean	1.22	1.22	1.06	1.01	1.01	1.28	1.24	1.06	1.10	1.11	
		St. Dev.	2.92	2.92	1.23	1.22	1.22	2.86	2.60	2.25	2.13	4.11	
		Max	12.77	12.77	4.73	4.03	4.03	12.57	8.25	10.17	9.59	18.32	
		Min	-0.14	-0.14	-0.32	-0.65	-0.65	-0.35	-0.89	-0.50	-0.02	-0.90	
Size in £000s (S)	Established Railways	Mean	1,488.9	1,790.5	2,380.5	3,502.7	3,339.1	3,460.3	4,304.8	3,887.2	3,234.0	3,899.5	
		St. Dev.	2,117.1	2,585.8	2,778.2	3,673.1	3,085.8	3,919.4	5,328.4	4,629.7	4,252.9	5,264.7	
		Max	9,527.3	13,065.4	12,524.5	14,922.1	12,379.1	17,268.2	22,602.4	17,577.1	15,580.6	22,942.2	
		Min	64.0	88.0	73.0	94.9	290.9	162.9	426.0	203.0	84.0	112.1	
	Non-Railways	Mean	1,123.5	1,228.8	1,351.2	1,324.7	1,231.2	1,205.9	1,075.4	1,015.1	1,182.0	1,227.5	
		St. Dev.	595.5	682.8	791.0	757.3	738.0	782.0	663.1	698.1	894.0	911.5	
		Max	2,849.7	3,238.3	3,886.0	3,853.6	3,626.9	3,659.3	3,173.5	3,367.8	4,329.6	4,366.0	
		Min	600.0	600.0	720.0	787.5	607.5	357.2	357.2	339.3	330.4	330.4	

**Table 2: Panel Cointegration Tests**

<b>All tests</b>			
	$H_0: \alpha_i = 0$ (implies no cointegration)		
<b><math>G_\tau</math> and <math>G_\alpha</math></b>	$H_1: \alpha_i < 0$ (for at least one i)		
<b><math>P_\tau</math> and <math>P_\alpha</math></b>	$H_1: \alpha_i = \alpha < 0$ (for all i)		
Where $\alpha_i$ determines the speed at which the system corrects back to the equilibrium relationship $y_{i,t-1} - \beta_i' x_{i,t-1}$ after a sudden shock.			
<b>Statistic</b>	<b>Value</b>	<b>Z-value</b>	<b>P-value</b>
Railways And Non-Railways			
$G_\tau$	-2.513	-1.568	0.059
$G_\alpha$	-13.810	-2.300	0.011
$P_\tau$	-29.883	-15.120	0.000
$P_\alpha$	-29.325	-27.284	0.000
Railways			
$G_\tau$	-2.333	0.191	0.576
$G_\alpha$	-9.343	2.547	0.995
$P_\tau$	-10.978	3.537	1.000
$P_\alpha$	-7.434	1.687	0.954
Non-Railways			
$G_\tau$	-2.856	-2.786	0.003
$G_\alpha$	-18.737	-4.598	0.000
$P_\tau$	-22.769	-15.516	0.000
$P_\alpha$	-48.047	-29.269	0.000

Notes: Tests based on Westerlund (2007) and Persyn and Westerlund (2008). Tests statistics given by:

$$G_\tau = \frac{1}{N} \sum_{i=1}^N \frac{\hat{\alpha}_i}{SE(\hat{\alpha}_i)}$$

$$G_\alpha = \frac{1}{N} \sum_{i=1}^N \frac{T \hat{\alpha}_i}{\hat{\alpha}_i(1)}$$

$$P_\tau = \frac{\hat{\alpha}}{SE(\hat{\alpha})}$$

$$P_\alpha = T \hat{\alpha}$$

**Table 3: Cross-sectional Regressions on Selected Weeks**  
**Panel A: Price/Paid**

	Jan 6, 1843	Dec 29, 1843	Dec 27, 1844	Aug 8, 1845	Dec 26, 1845	Dec 25, 1846	Dec 31, 1847	Dec 29, 1848	Dec 28, 1849	Dec 27, 1850	Total No. of Weeks Sig.
D/Z	0.113*** (0.030)	0.153*** (0.020)	0.106*** (0.032)	0.120*** (0.021)	0.125*** (0.018)	0.056* (0.032)	0.113*** (0.015)	0.116*** (0.016)	0.102*** (0.020)	0.208*** (0.018)	399
R	-0.181 (0.107)	0.153* (0.088)	0.051 (0.094)	0.252** (0.101)	0.211** (0.102)	-0.075 (0.108)	-0.284*** (0.091)	-0.387*** (0.090)	-0.435*** (0.120)	0.156 (0.096)	192
B	0.021 (0.033)	0.072* (0.042)	0.024 (0.032)	0.027 (0.027)	-0.053*** (0.017)	-0.051 (0.093)	-0.013 (0.021)	0.009 (0.015)	0.030 (0.032)	0.039*** (0.007)	118
S	0.065** (0.025)	0.029* (0.017)	0.043** (0.017)	0.024 (0.018)	0.008 (0.015)	0.020 (0.015)	-0.000 (0.009)	0.007 (0.009)	0.009 (0.008)	-0.008 (0.006)	78
Constant	0.518*** (0.176)	0.331** (0.122)	0.732*** (0.205)	0.719*** (0.127)	0.681*** (0.117)	1.034*** (0.200)	0.603*** (0.115)	0.512*** (0.109)	0.679*** (0.137)	0.089 (0.117)	400
Obs.	39	43	41	42	41	39	36	40	39	40	16,770
R <sup>2</sup>	0.643	0.683	0.446	0.617	0.594	0.329	0.659	0.663	0.739	0.871	0.598

Notes: A regression estimating Equation 1 is reported for selected weeks of the sample. Robust standard errors in parentheses. Significance given by \*\*\* p<0.01, \*\* p<0.05, \* p<0.1. The total number of weeks that a variable is significant is shown in final column. P=Share Price, Z=Par Value, D=Dividend, R=Railway Dummy, B=Beta, S=Size.

$$\frac{P_{i,t}}{Z_{i,t}} = \beta_0 + \beta_1 \frac{D_{i,t}}{Z_{i,t}} + \beta_2 R_i + \beta_3 B_i + \beta_4 S_{i,t} + \varepsilon \quad (1)$$

**Panel B: Dividend Yield**

	Jan 6, 1843	Dec 29, 1843	Dec 27, 1844	Aug 8, 1845	Dec 26, 1845	Dec 25, 1846	Dec 31, 1847	Dec 29, 1848	Dec 28, 1849	Dec 27, 1850	Total No. of Weeks Sig.
R	0.011* (0.006)	-0.012*** (0.004)	-0.009** (0.004)	-0.011*** (0.004)	-0.012** (0.004)	-0.006 (0.006)	0.004 (0.006)	0.017* (0.010)	0.014 (0.011)	-0.014*** (0.005)	148
B	-0.000 (0.001)	-0.001 (0.001)	0.000 (0.001)	0.001 (0.001)	0.005** (0.002)	0.001 (0.001)	-0.000 (0.001)	-0.000 (0.001)	-0.002 (0.001)	-0.001* (0.000)	49
S	-0.002 (0.002)	0.000 (0.001)	0.001 (0.000)	0.001 (0.000)	0.000 (0.001)	0.001 (0.001)	0.001 (0.001)	-0.001 (0.001)	-0.002 (0.001)	0.000 (0.000)	18
Constant	0.051*** (0.004)	0.047*** (0.003)	0.043*** (0.004)	0.041*** (0.002)	0.043*** (0.003)	0.050*** (0.005)	0.051*** (0.004)	0.057*** (0.005)	0.056*** (0.005)	0.050*** (0.004)	417
Obs.	38	42	41	41	40	39	37	41	35	38	16,501
R <sup>2</sup>	0.116	0.214	0.139	0.219	0.324	0.040	0.089	0.106	0.111	0.227	0.057

Notes: A regression estimating Equation 2 is reported for selected weeks of the sample. Robust standard errors in parentheses. Significance given by \*\*\* p<0.01, \*\* p<0.05, \* p<0.1. The total number of weeks that a variable is significant is shown in final column. P=Share Price, D=Dividend, R=Railway Dummy, B=Beta, S=Size.

$$\frac{D_{i,t}}{P_{i,t}} = \beta_0 + \beta_1 R_i + \beta_2 B_i + \beta_3 S_{i,t} + \varepsilon \quad (2)$$

**Table 4: Number of Weeks during which Variables are Significant from Cross-Sectional Regressions**

**Panel A: Price/Paid**

D	399	417	417	417	417	417	417
R	192	188	147	87	49	31	18
B	118	103	115	147	137	116	105
S	78	67	48	34	15	21	19
$\Delta(D/Z) t+1$		250	312	290	283	271	296
$\Delta(D/Z) t+2$			136	192	195	210	171
$\Delta(D/Z) t+3$				113	117	140	153
$\Delta(D/Z) t+4$					87	114	116
$\Delta(D/Z) t+5$						86	127
$\Delta(D/Z) t+6$							81
Cons.	400	383	324	277	217	137	95
Ave. Obs.	40.2	39.0	38.0	37.3	36.9	36.5	36.3
Obs.	16,770	16,258	15,830	15,571	15,374	15,219	15,133
Ave. Adj R <sup>2</sup>	0.598	0.666	0.707	0.732	0.739	0.745	0.755

Notes: A regression estimating Equation 3 was calculated for each week of the sample, with varying numbers of half-years of dividend growth included. The total number of weeks that a variable is significant is shown for each specification. P=Share Price, Z=Par Value, D=Dividend, R=Railway Dummy, B=Beta, S=Size.

For week = t

$$\frac{P_{i,t}}{Z_{i,t}} = \beta_0 + \beta_1 \frac{D_{i,t}}{Z_{i,t}} + \beta_2 E_t \left( \Delta \frac{D_{i,t+n}}{Z_{i,t+n}} \right) + \beta_3 R_i + \beta_4 B_i + \beta_5 S_{i,t} + \varepsilon \quad (3)$$

**Panel B: Dividend Yield**

R	148	86	38	12	11	38	44
B	49	73	59	53	53	54	46
S	18	18	7	11	21	24	43
$\Delta(D/Z) t+1$		283	318	335	349	341	333
$\Delta(D/Z) t+2$			176	233	229	212	173
$\Delta(D/Z) t+3$				150	193	167	162
$\Delta(D/Z) t+4$					176	198	166
$\Delta(D/Z) t+5$						204	220
$\Delta(D/Z) t+6$							144
Cons.	417	417	417	417	417	417	417
Ave. Obs.	39.6	38.4	37.4	36.8	36.4	36.1	35.8
Obs.	16,501	16,002	15,586	15,356	15,193	15,038	14,932
Ave. Adj R <sup>2</sup>	0.057	0.229	0.334	0.400	0.448	0.500	0.530

Notes: A regression estimating Equation 4 was calculated for each week of the sample, with varying numbers of half-years of dividend growth included. The total number of weeks that a variable is significant is shown for each specification. P=Share Price, Z=Par Value, D=Dividend, R=Railway Dummy, B=Beta, S=Size.

For week = t

$$\frac{D_{i,t}}{P_{i,t}} = \beta_0 + \beta_1 E_t \left( \Delta \frac{D_{i,t+n}}{Z_{i,t+n}} \right) + \beta_2 R_i + \beta_3 B_i + \beta_4 S_{i,t} + \varepsilon \quad (4)$$



**Table 5: Estimates of the Number of Weeks of Over and Under Pricing of Railway Shares between 1843 and 1850 using Railway Dummy from Share Price/Par vs Dividend/Par regressions**

No. of future changes in dividends included	Overpriced or Underpriced	1843	1844	1845	1846	1847	1848	1849	1850	Total	Relative to n=0	Total (% of sample)	Relative to n=0 (% of sample)
n = 0	Overpriced	0	6	20	5	0	0	0	0	31	-	7.4%	-
	Underpriced	0	0	0	0	22	52	52	35	161	-	38.6%	-
n = 1	Overpriced	0	8	12	5	0	0	0	0	25	-6	6.0%	-1.4%
	Underpriced	0	0	0	0	40	52	52	19	163	2	39.1%	0.5%
n = 2	Overpriced	0	5	8	0	0	0	0	0	13	-18	3.1%	-4.3%
	Underpriced	0	0	0	0	38	46	36	14	134	-27	32.1%	-6.5%
n = 3	Overpriced	0	0	0	0	0	0	0	0	0	-31	0.0%	-7.4%
	Underpriced	0	0	0	0	16	41	9	21	87	-74	20.9%	-17.7%
n = 4	Overpriced	0	0	0	0	0	0	0	0	0	-31	0.0%	-7.4%
	Underpriced	4	0	0	0	0	24	1	20	49	-112	11.8%	-26.9%
n = 5	Overpriced	0	0	0	0	0	0	0	0	0	-31	0.0%	-7.4%
	Underpriced	4	2	0	0	0	0	0	25	31	-130	7.4%	-31.2%
n = 6	Overpriced	0	0	0	0	0	0	0	0	0	-31	0.0%	-7.4%
	Underpriced	0	0	0	0	0	0	0	18	18	-143	4.3%	-34.3%

Notes: A regression estimating Equation 3 is calculated for each week of the sample. The railways were defined as overpriced in a particular week if the railway dummy ( $\beta_3$ ) was significantly greater than zero during that particular week, as this suggested the railways had a significantly higher share price/par ratio than non-railways, given their current and future dividends, during that week. Conversely, they were defined as underpriced in a particular week if the railway dummy was significantly less than zero during that week. The total weeks of overpricing and underpricing for each year were then calculated. P=Share Price, Z=Par Value, D=Dividend, R=Railway Dummy, B=Beta, S=Size.

For week = t

$$\frac{P_{i,t}}{Z_{i,t}} = \beta_0 + \beta_1 \frac{D_{i,t}}{Z_{i,t}} + \beta_2 E_t \left( \Delta \frac{D_{i,t+n}}{Z_{i,t+n}} \right) + \beta_3 R_i + \beta_4 B_i + \beta_5 S_{i,t} + \varepsilon \quad (3)$$

**Table 6: Estimates of the Number of Weeks of Over and Under Pricing of Railway Shares between 1843 and 1850 using Railway Dummy from Dividend Yield regressions**

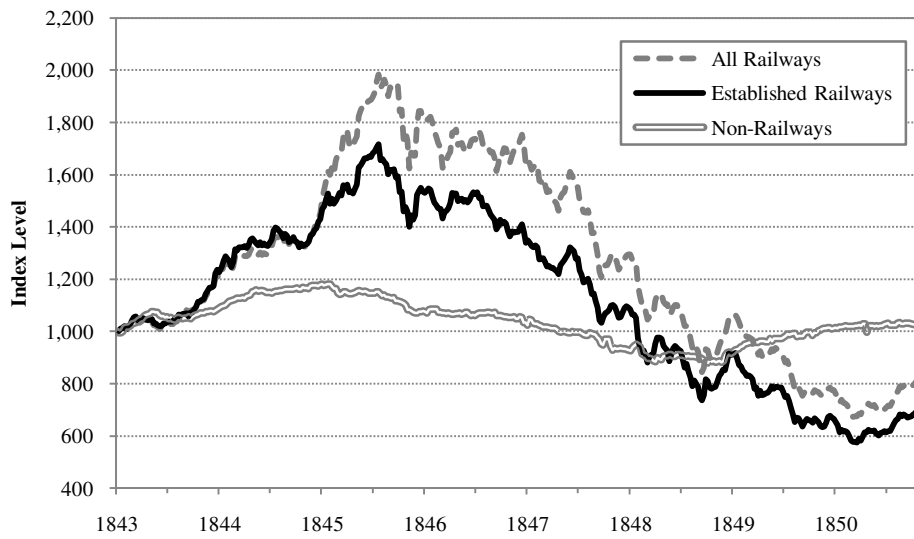
No. of future changes in dividends included	Overpriced or Underpriced	1843	1844	1845	1846	1847	1848	1849	1850	Total	Relative to n=0	Total (% of sample)	Relative to n=0 (% of sample)
n = 0	Overpriced	2	38	51	12	0	0	0	7	110	-	26.4%	-
	Underpriced	0	0	0	0	0	27	0	11	38	-	9.1%	-
n = 1	Overpriced	0	24	33	12	0	0	0	0	69	-41	16.5%	-9.8%
	Underpriced	0	0	0	0	0	17	0	0	17	-21	4.1%	-5.0%
n = 2	Overpriced	0	4	27	0	0	0	0	1	32	-78	7.7%	-18.7%
	Underpriced	0	0	0	0	0	6	0	0	6	-32	1.4%	-7.7%
n = 3	Overpriced	0	0	1	0	0	0	6	0	7	-103	1.7%	-24.7%
	Underpriced	0	0	0	0	0	5	0	0	5	-33	1.2%	-7.9%
n = 4	Overpriced	0	0	0	0	0	0	0	0	0	-110	0.0%	-26.4%
	Underpriced	1	0	0	0	0	2	3	5	11	-27	2.6%	-6.5%
n = 5	Overpriced	0	0	2	0	0	0	0	0	2	-108	0.5%	-25.9%
	Underpriced	7	1	0	0	0	5	16	7	36	-2	8.6%	-0.5%
n = 6	Overpriced	0	0	5	2	0	0	0	0	7	-103	1.7%	-24.7%
	Underpriced	7	0	0	0	0	11	12	7	37	-1	8.9%	-0.2%

Notes: A regression estimating Equation 4 is calculated for each week of the sample. The railways are estimated to be overpriced during a particular week when the railway dummy ( $\beta_2$ ) is significantly less than zero, as this implies that railways had a significantly lower dividend yield than non-railways during that week, when future dividend growth is controlled for. Conversely they are estimated to be underpriced when the coefficient of the railways dummy was significantly higher than zero. The total weeks of overpricing and underpricing for each year were then calculated. P=Share Price, Z=Par Value, D=Dividend, R=Railway Dummy, B=Beta, S=Size.

For week = t

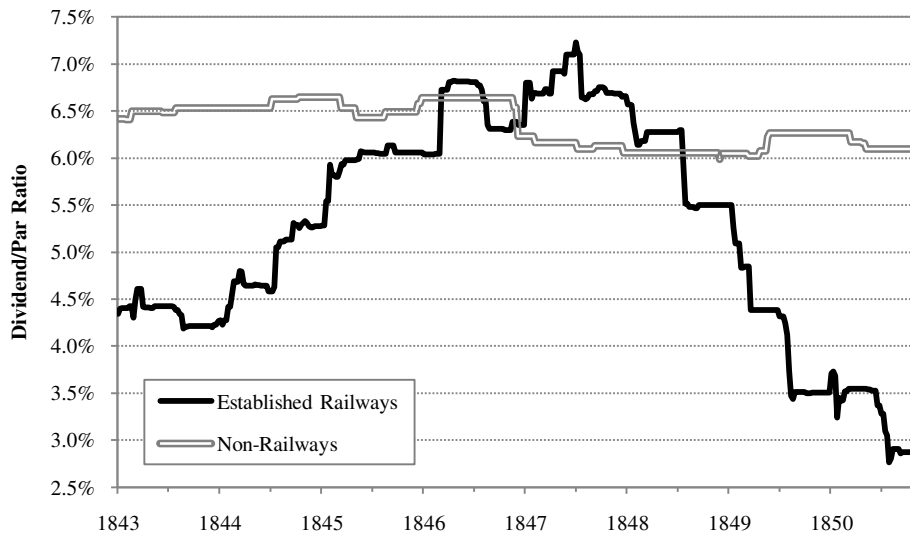
$$\frac{D_{i,t}}{P_{i,t}} = \beta_0 + \beta_1 E_t \left( \Delta \frac{D_{i,t+n}}{Z_{i,t+n}} \right) + \beta_2 R_i + \beta_3 B_i + \beta_4 S_{i,t} + \varepsilon \quad (4)$$

**Figure 1: Capital Gains Indices for All Railways, Established Railways and Non-Railways, 1843-50**



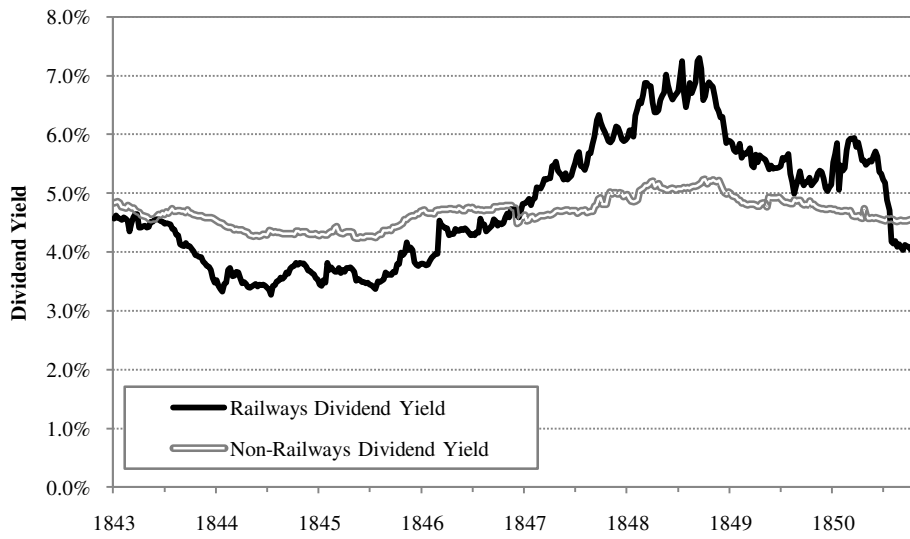
Notes: Source data for railway share prices from Railway Times (1843-50), and for non-railway share prices from Course of the Exchange (1843-50). All Railways index includes all railway securities for which share price data is available. Established Railways index includes those railways which were operating before January 1843 for which share price and dividend data is available. Non-railways index includes the twenty largest non-railways by market capitalisation for which share price and dividend data is available. Capital gains for each company weighted by market capitalisation to produce market indices on a weekly basis.

**Figure 2: Industry Dividend/Par Ratio Amongst Established Railways and Non-Railways, 1843-50**



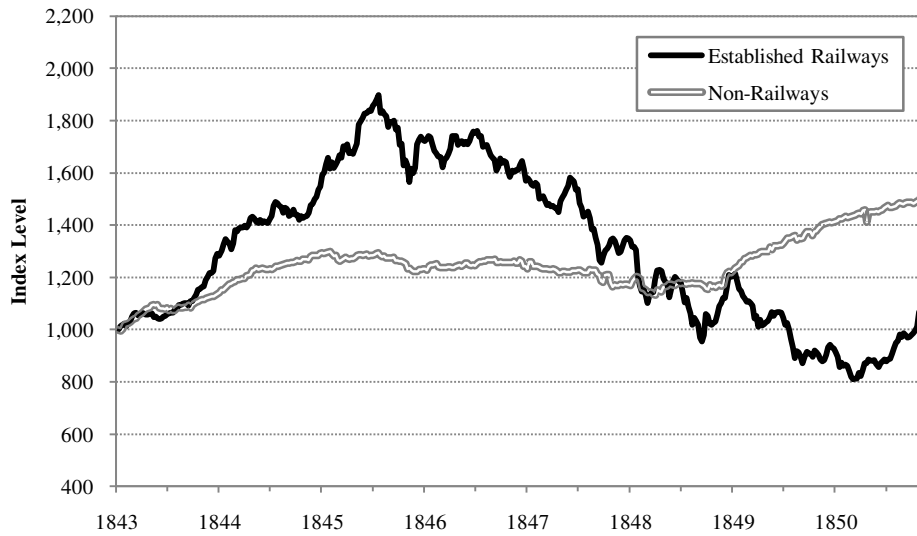
Notes: Source data for both railway and non-railway dividends from Course of the Exchange (1843-50). Par value data for railways obtained from Railway Times (1843-50), and for non-railways from Course of the Exchange (1843-50). Railway industry dividend/par ratio calculated as total dividends paid by established railway companies as a percentage of total par value of established railway companies for which share price and dividend data is available. Non-railway industry dividend/par ratio calculated as total dividends paid by non-railway companies as a percentage of total par value of non-railway companies for which share price and dividend data is available.

**Figure 3: Industry Dividend Yield of Railways and Non-Railways, 1843-50**



Notes: Source data for both railway and non-railway dividends from Course of the Exchange (1843-50). Share price data for railways obtained from Railway Times (1843-50), and for non-railways from Course of the Exchange (1843-50). Railway industry dividend/price ratio calculated as total dividends paid by established railway companies as a percentage of total market capitalisation of established railway companies for which share price and dividend data is available. Non-railway industry dividend/price ratio calculated as total dividends paid by non-railway companies as a percentage of total market capitalisation of non-railway companies for which share price and dividend data is available.

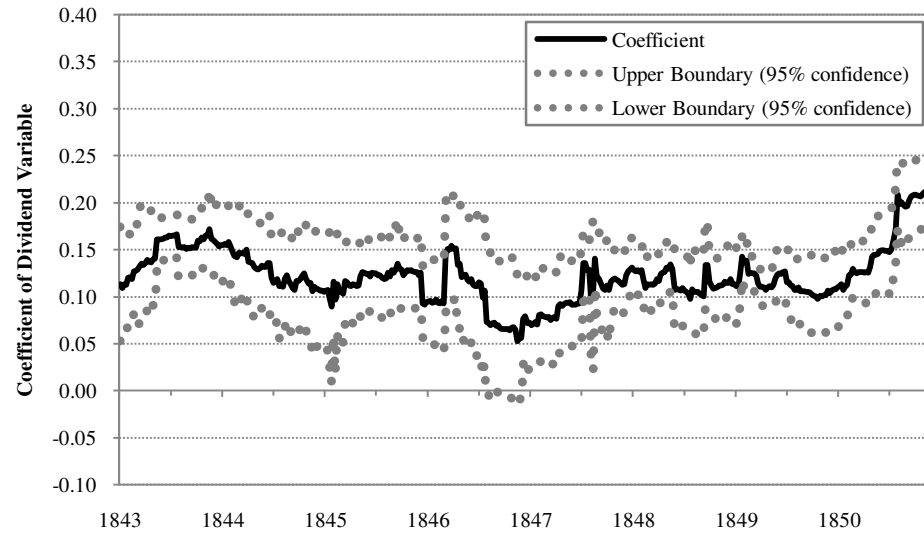
**Figure 4: Total Return Indices for All Railways, Established Railways and Non-Railways, 1843-50**



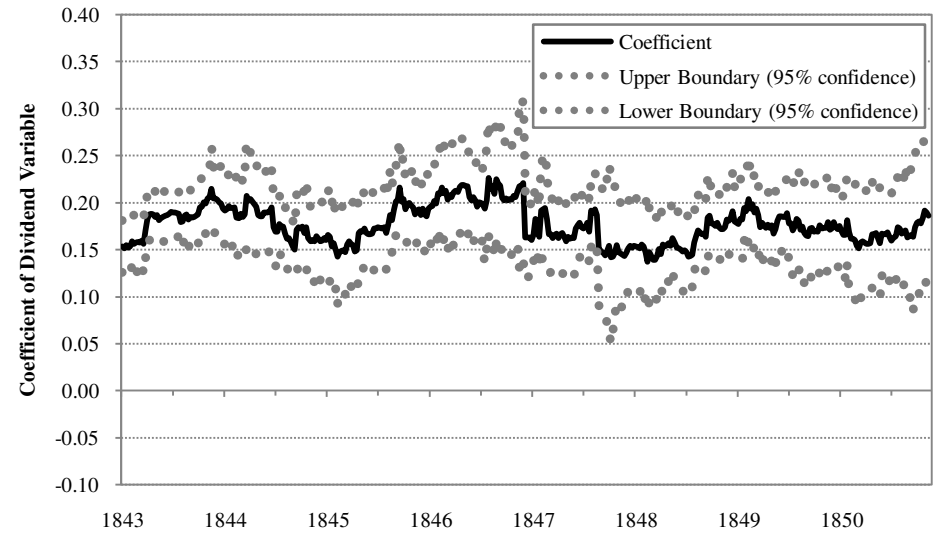
Notes: Source data for both railway and non-railway dividends from Course of the Exchange (1843-50). Share price data for railways obtained from Railway Times (1843-50), and for non-railways from Course of the Exchange (1843-50). Half-yearly dividend assumed to be made in equal payments in each week. Total return, as measured by the sum of capital gains and dividends, for each company weighted by market capitalisation to produce market indices. Established railways index includes those railways which were operating before January 1843 for which share price and dividend data is available. Non-railways index includes the twenty largest non-railways by market capitalisation for which share price and dividend data is available.

**Figure 5: Impact of Dividend Variable on Share Price Premium from Repeated Weekly Cross-sectional Regressions, 1843-50**

**Panel A: Controlling for Beta, Size and Railway Dummy**



**Panel B: Controlling for Beta, Size, Railway Dummy and Two Years of Dividend Growth**



Notes: A regression estimating Equation 1 is calculated for each week of the sample. Value of the coefficient represents the value of  $\beta_1$  from Equation 1 in any given week, with a 95 per cent confidence interval constructed using robust standard errors. P=Share Price, Z=Par Value, D=Dividend, R=Railway Dummy, B=Beta, S=Size. For week = t

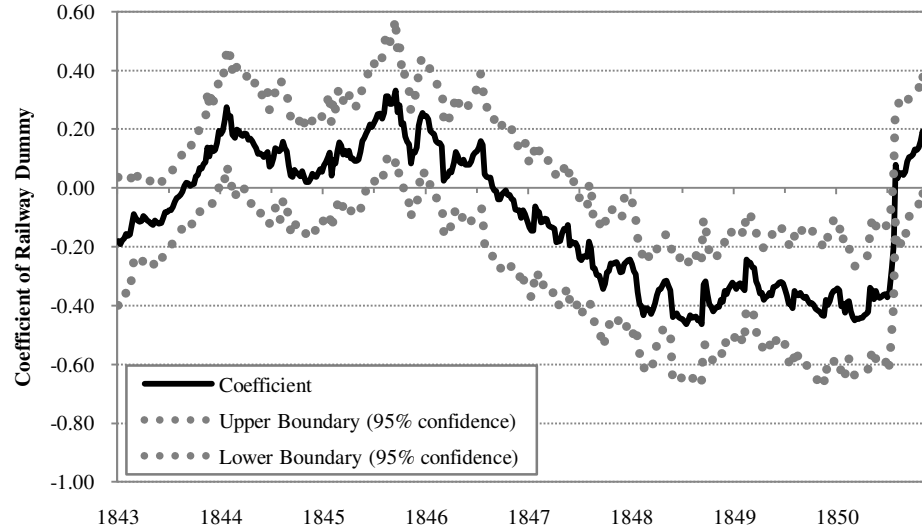
$$\frac{P_{i,t}}{Z_{i,t}} = \beta_0 + \beta_1 \frac{D_{i,t}}{Z_{i,t}} + \beta_2 R_i + \beta_3 B_i + \beta_4 S_{i,t} + \varepsilon \quad (1)$$

Notes: A regression estimating Equation 3 is calculated for each week of the sample. Value of the coefficient represents the value of  $\beta_1$  from Equation 3 in any given week, with a 95 per cent confidence interval constructed using robust standard errors. P=Share Price, Z=Par Value, D=Dividend, R=Railway Dummy, B=Beta, S=Size. For week = t

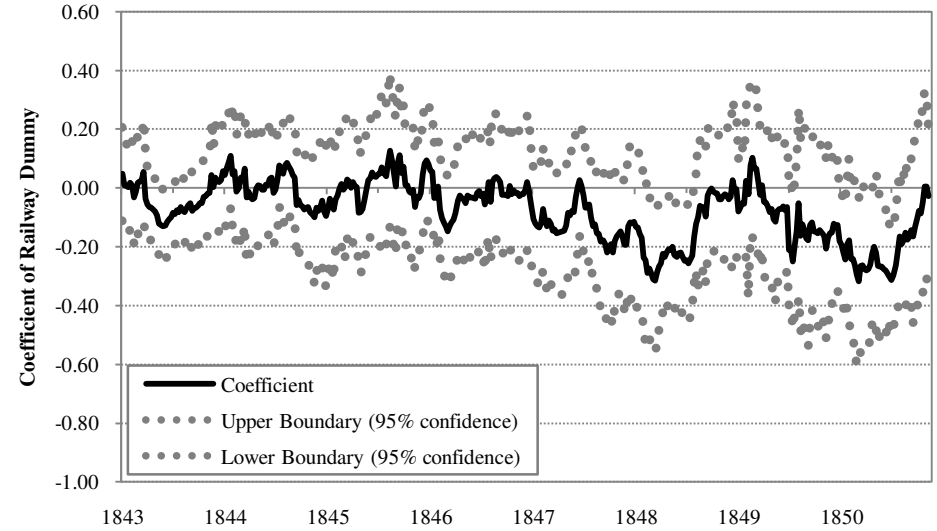
$$\frac{P_{i,t}}{Z_{i,t}} = \beta_0 + \beta_1 \frac{D_{i,t}}{Z_{i,t}} + \beta_2 E_t \left( \Delta \frac{D_{i,t+n}}{Z_{i,t+n}} \right) + \beta_3 R_i + \beta_4 B_i + \beta_5 S_{i,t} + \varepsilon \quad (3)$$

**Figure 6: Impact of Railway Dummy on Share Price Premium from Repeated Weekly Cross-sectional Regressions, 1843-50**

**Panel A: Controlling for Current Dividend, Beta and Size**



**Panel B: Controlling for Current Dividend, Two Years of Dividend Growth, Beta and Size**



Notes: A regression estimating Equation 1 is calculated for each week of the sample. Value of the coefficient represents the value of  $\beta_2$  from Equation 1 in any given week, with a 95 per cent confidence interval constructed using robust standard errors. P=Share Price, Z=Par Value, D=Dividend, R=Railway Dummy, B=Beta, S=Size. For week = t

$$\frac{P_{i,t}}{Z_{i,t}} = \beta_0 + \beta_1 \frac{D_{i,t}}{Z_{i,t}} + \beta_2 R_i + \beta_3 B_i + \beta_4 S_{i,t} + \varepsilon \quad (1)$$

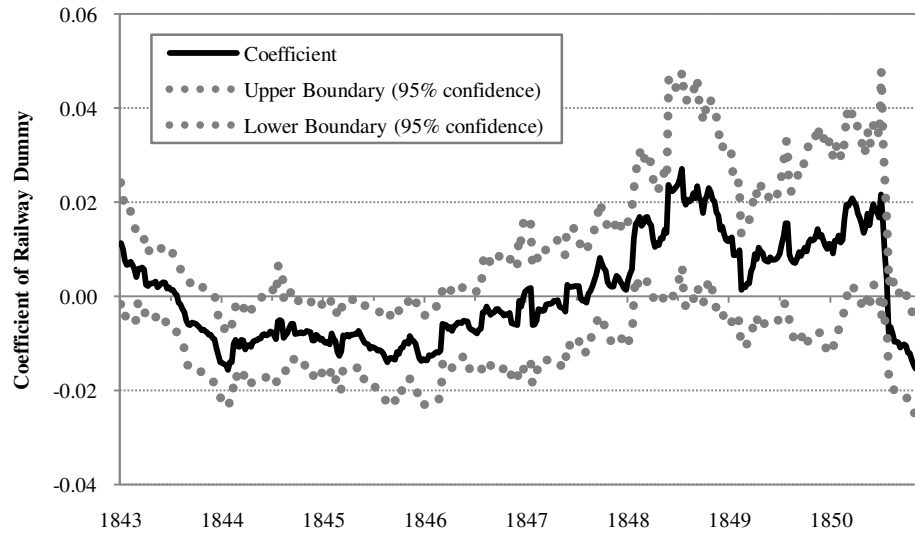
Notes: A regression estimating Equation 3 is calculated for each week of the sample. Value of the coefficient represents the value of  $\beta_3$  from Equation 3 in any given week, with a 95 per cent confidence interval constructed using robust standard errors. P=Share Price, Z=Par Value, D=Dividend, R=Railway Dummy, B=Beta, S=Size. For week = t

$$\frac{P_{i,t}}{Z_{i,t}} = \beta_0 + \beta_1 \frac{D_{i,t}}{Z_{i,t}} + \beta_2 E_t \left( \Delta \frac{D_{i,t+n}}{Z_{i,t+n}} \right) + \beta_3 R_i + \beta_4 B_i + \beta_5 S_{i,t} + \varepsilon \quad (3)$$

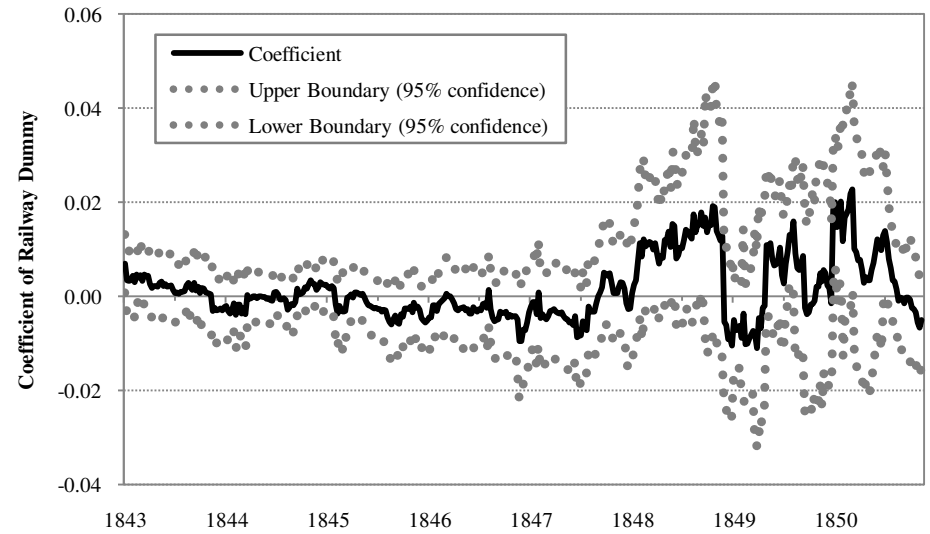


**Figure 7: Impact of Railway Dummy on Dividend Yield from Repeated Weekly Cross-sectional Regressions, 1843-50**

**Panel A: Controlling for Beta and Size**



**Panel B: Controlling for Two Years of Dividend Growth, Beta and Size**



Notes: A regression estimating Equation 2 is calculated for each week of the sample. Value of the coefficient represents the value of  $\beta_1$  from Equation 2 in any given week, with a 95 per cent confidence interval constructed using robust standard errors. P=Share Price, D=Dividend, R=Railway Dummy, B=Beta, S=Size.

For week = t

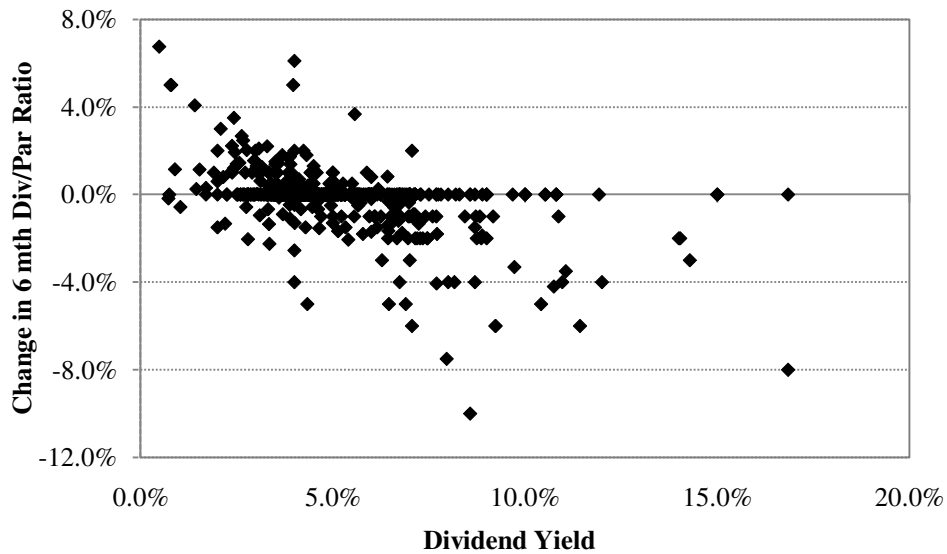
$$\frac{D_{i,t}}{P_{i,t}} = \beta_0 + \beta_1 R_i + \beta_2 B_i + \beta_3 S_{i,t} + \varepsilon \quad (2)$$

Notes: A regression estimating Equation 4 is calculated for each week of the sample. Value of the coefficient represents the value of  $\beta_2$  from Equation 4 in any given week, with a 95 per cent confidence interval constructed using robust standard errors. P=Share Price, D=Dividend, Z=Par Value, R=Railway Dummy, B=Beta, S=Size.

For week = t

$$\frac{D_{i,t}}{P_{i,t}} = \beta_0 + \beta_1 E_t \left( \frac{\Delta D_{i,t+n}}{Z_{i,t+n}} \right) + \beta_2 R_i + \beta_3 B_i + \beta_4 S_{i,t} + \varepsilon \quad (4)$$

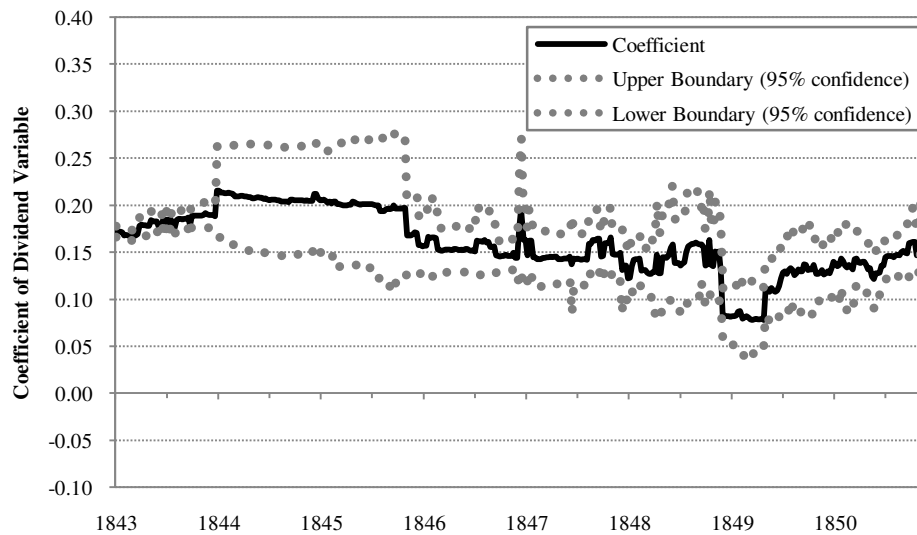
**Figure 8: Correlation between Dividend Yield and Dividend Growth during the Next Six Months, using One Observation per Company Every Six Months**



Notes: Correlation coefficient = -0.491. Source data for both railway and non-railway dividends from Course of the Exchange (1843-50). Share price data for railways obtained from Railway Times (1843-50), and for non-railways from Course of the Exchange (1843-50). One observation shown per company at end of June and end of December in each year between 1843 and 1850. Dividend Yield calculated as Dividend Per Share/Share Price. Change in 6 month Dividend/Par ratio calculated as difference between Dividend/Par ratio at time t and time t+6 months.

**Figure 9: Impact of Dividend Variable and Railway Dummy on Share Price Premium from Repeated Weekly Cross-sectional Regressions, 1843-50, Including Non-Railway Outliers with High Dividend/Par Ratios**

**Panel A: Coefficient of Dividend Variable Controlling for Beta, Size, Railway Dummy and Two Years of Dividend Growth**

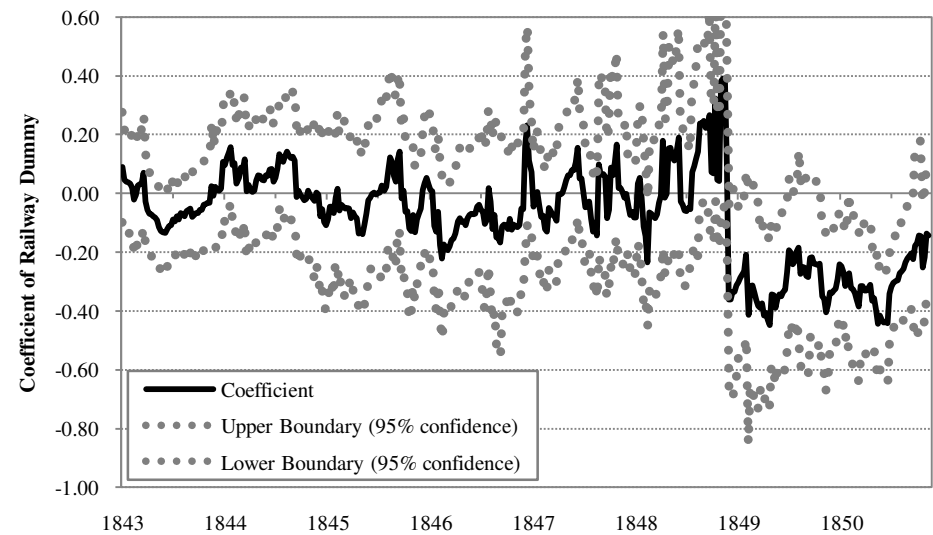


Notes: A regression estimating Equation 3 is calculated for each week of the sample. Value of the coefficient represents the value of  $\beta_1$  from Equation 3 in any given week, with a 95 per cent confidence interval constructed using robust standard errors. P=Share Price, Z=Par Value, D=Dividend, R=Railway Dummy, B=Beta, S=Size.

For week = t

$$\frac{P_{i,t}}{Z_{i,t}} = \beta_0 + \beta_1 \frac{D_{i,t}}{Z_{i,t}} + \beta_2 E_t \left( \Delta \frac{D_{i,t+n}}{Z_{i,t+n}} \right) + \beta_3 R_i + \beta_4 B_i + \beta_5 S_{i,t} + \varepsilon \quad (3)$$

**Panel B: Coefficient of Railway Dummy Controlling for Current Dividend, Beta, Size, and Two Years of Dividend Growth**



Notes: A regression estimating Equation 3 is calculated for each week of the sample. Value of the coefficient represents the value of  $\beta_2$  from Equation 3 in any given week, with a 95 per cent confidence interval constructed using robust standard errors. P=Share Price, Z=Par Value, D=Dividend, R=Railway Dummy, B=Beta, S=Size.

For week = t

$$\frac{P_{i,t}}{Z_{i,t}} = \beta_0 + \beta_1 \frac{D_{i,t}}{Z_{i,t}} + \beta_2 E_t \left( \Delta \frac{D_{i,t+n}}{Z_{i,t+n}} \right) + \beta_3 R_i + \beta_4 B_i + \beta_5 S_{i,t} + \varepsilon \quad (3)$$