



Munich Personal RePEc Archive

Shadow economy, economic growth and labor market - Romanian case

Mutascu, Mihai

West University from Timisoara (Romania), Faculty of Economics,
Finance Department

10 November 2008

Online at <https://mpra.ub.uni-muenchen.de/11392/>
MPRA Paper No. 11392, posted 08 Nov 2008 15:28 UTC

SHADOW ECONOMY, ECONOMIC GROWTH AND LABOR MARKET. ROMANIAN CASE

*Assistant Professor Mutașcu Mihai, West University Timisoara,
Faculty of Economic and Business Administration, Finance Department,
mihai.mutascu@gmail.com*

Abstract: the shadow economy is represented by the whole economic activities which are realized at the border of the criminal laws, social laws or fiscal laws or which are skipping (massive) from the inventory of national accounts. The paper is intended to quantify and analyze the impact of the shadow economy on the main variables that may characterize economic growth and labor market, for the Romanian case.

Keywords: shadow economy, effects, economic growth, labor market

JEL Cod: O17, O40, J40

The paper is intended to quantify and analyze the impact of the shadow economy (S) on the main variables that may characterize economic growth and labor market, for the Romanian case. The economic growth is being treated through gross domestic product (GDP) as an essential variable for measuring economic growth, and labor market is treated through unemployment rate (RS) and net average monthly salary (SNL).

The shadow economy values are taken from studies made by Friedrich Schneider, specifically from "*Dimensions of the Shadow Economy*", published in *The Independent Review*, VV, n.1, 2000, as well as from "*Shadow Economies of 145 Countries all over the World: Estimation Results over the period 1999 to 2003* ", Working Paper No. 2005-13, Center for Research in Economics, Management and the Arts (CREMA), Basel, March 2007.

The analysis of the impact of the shadow economy on economic growth and labor market is made for the 1990-2007¹ years, watching the effects of the shadow economy on gross domestic product, unemployment rate and average net monthly salary. The analysis method used is the econometric modeling, by using the software package EViews 5.0².

Accordingly, we have built three one-variables regression models like:

$$Y_t = \alpha + \beta_i x X_{it} + \varepsilon_t \quad (1)$$

where

- Y_t is the dependent variable;
- α the intercept coefficient;
- β_i the slope coefficients;
- X_{it} the independent variable;
- ε_t the random variable;
- i the number of the variables;
- t the time interval (1990-2007).

¹ Time series processed from the Annual Report of National Bank of Romania 1993-2007 and from the Romanian Statistical Yearbook 1990-2007.

² Copyright © 1994-2004 Quantitative Micro Software, LLC, All Rights Reserved.

Concretely, it will be looked up for quantifying the relationship that exists between the shadow economy level and the GDP volume, the unemployment rate and average net monthly wage.

The time series are illustrated in Table 1.

Table 1

**Shadow economy level, GDP volume, unemployment rate
and medium net monthly wages, in Romania, in 1990-2007 period**

Year	Shadow economy level	GDP	Unemployment rate	Medium net monthly wages
u.m	% of GDP	Mil. Ron	%	Ron
1990	18	0.09	1.6	0.70
1991	16	0.22	3	1.18
1992	16	0.60	8.2	3.26
1993	16	2.00	10.4	10.13
1994	18.3	4.98	10.9	19.85
1995	18.3	7.21	9.5	28.30
1996	19.3	10.89	6.6	43.37
1997	19.3	25.3	8.9	94.05
1998	19.3	37.38	10.4	136.03
1999	34.4	54.57	11.8	199.01
2000	34.4	80.38	10.5	291.16
2001	36.1	116.77	8.8	365.97
2002	36.1	151.48	8.4	452.57
2003	37.4	197.56	7.4	565.81
2004	37.4	246.47	6.3	687.51
2005	26.8	288.05	5.9	848.00
2006	26.8	344.54	5.2	1,099.00
2007	26.8	404.71	4.57	1,266.00

Source : data taken from Friedrich Schneider (2000, 2007) and from the Annual Report of National Bank of Romania, 1993-2007, and also from the Romanian Statistical Yearbook 1990-2007

1. The modeling of the impact of show economy on gross domestic product is based on a one-variable regressive model like:

$$Y_t = \alpha + \beta_i x X_t + \varepsilon_t \quad (2)$$

where Y_t is the dependent variable – GDP (gross domestic product), α the intercept coefficient, β the slope coefficients, X_t the independent variable - S (the shadow economy level, as a weight of GDP), ε_t the random variable, i the number of the variables - 1, and t the time interval (1990-2007).

The mathematical model will be:

$$P.I.B. = \alpha + \beta x S + \varepsilon_t \quad (3)$$

After modeling the two time series, the results obtained shall become (Table 2):

Table 2

**Statistical tests related to the modelling of the shadow economy level impact
on the volume of GDP**

Dependent Variable: PIB				
Method: Least Squares				
Date: 08/06/08 Time: 23:28				
Sample: 1990 2007				
Included observations: 18				
PIB=C(2)*S				
	Coefficient	Std. Error	t-Statistic	Prob.
C(2)	4.718776	1.024301	4.606826	0.0003
R-squared	0.231536	Mean dependent var		109.6222
Adjusted R-squared	0.231536	S.D. dependent var		132.2206
S.E. of regression	115.9074	Akaike info criterion		12.39741
Sum squared resid	228386.8	Schwarz criterion		12.44688
Log likelihood	-110.5767	Durbin-Watson stat		2.110793

On a first view, the intercept coefficient - α was negative. Given that the economy operates with positive values the regression was recast by excluding the intercept coefficient.

Analyzing the data from Table 2, we can draw the following conclusions:

- the values of standard errors of the regression coefficient are inferior to the value of the coefficient, taken as a module, which strengthens the validity of their estimation, sustained also by small value of probability;

- the correlation coefficient, with a value of 23,15% shows that the statistical relation between the dependent variable - GDP and the endogen variable S is relatively strong; the changes of the shadow economy are included in an appreciable proportion in the changes of the gross domestic product;

- the Durbin-Watson test, with a value slightly above the critical threshold 2, indicates that the residual variables are not auto-correlated.

As a result, with some clauses, we may appreciate that the model shall be considered representative for the description of the linkage between shadow economy level and GDP volume at a macro economic level.

After establishing the coefficients, the model can be:

$$\text{GDP} = 4,718776333 \times S \quad (4)$$

Analyzing this model we may say that, in the Romanian case, the shadow economy has a low impact, but a benefic one, on the efficiency of the functioning of the economy, so an increase of its level with 1% determines an increase of GDP with 4,7%. In other properly, the shadow economy is a "necessary evil", its mechanisms support an legal economic growth of the country.

The trend of historical GDP, estimated GDP with the model and the residual values in Romania for the time interval 1990-2007 are presented in Figure 1.

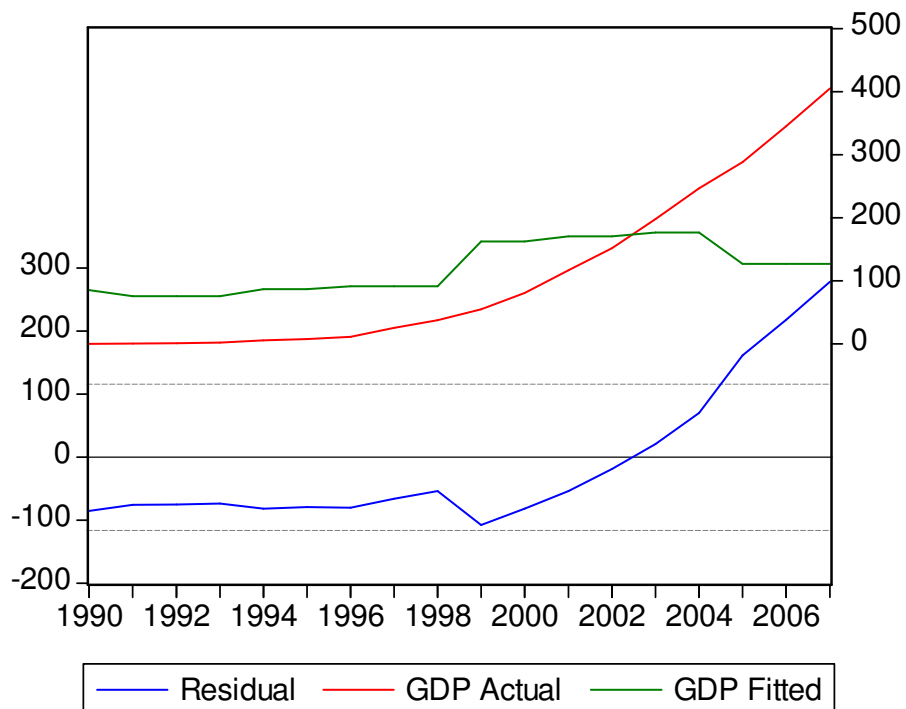


Figure 1 - The trend of GDP, estimated GDP with the model and the residual values, in Romania, for the time interval 1990-2007

2. The modeling of the impact of shadow economy on unemployment rate is based on a one-variable regressive model like:

$$Y_t = \alpha + \beta_1 x X_t + \varepsilon_t \tag{5}$$

where Y_t is the dependent variable - RS (unemployment rate), α the intercept coefficient, β the slope coefficients, X_t the independent variable - S (the shadow economy level, as a weight of GDP), ε_t the random variable, i the number of the variables - 1, and t the time interval (1990-2007).

The model will be:

$$RS = \alpha + \beta x S + \varepsilon_t \tag{6}$$

After modeling the two time series, the results obtained shall be (Table 3):

Table 3

Statistical tests related to the modelling of the shadow economy level impact on the unemployment rate

Dependent Variable: RS
Method: Least Squares
Date: 08/07/08 Time: 01:08
Sample (adjusted): 1992 2007
Included observations: 16 after adjustments

RS=C(1)+C(2)*S(-2)				
	Coefficient	Std. Error	t-Statistic	Prob.
C(1)	11.93074	1.292809	9.228540	0.0000
C(2)	-0.136497	0.048501	-2.814313	0.0138
R-squared	0.361324	Mean dependent var		8.491875
Adjusted R-squared	0.315705	S.D. dependent var		2.041631
S.E. of regression	1.688881	Akaike info criterion		4.002478
Sum squared resid	39.93246	Schwarz criterion		4.099051
Log likelihood	-30.01982	Durbin-Watson stat		2.146311

Analyzing the data from Table 3, we can draw the following conclusions:

- the values of standard errors of the regression coefficient are inferior to the value of the coefficient, taken as a module, which strengthens the validity of their estimation, sustained also by small value of probability;

- the correlation coefficient, with a value of 36,13% shows that the statistical relation between the dependent variable - RS and the endogen variable -S is relatively moderate; the changes of the shadow economy are included in an appreciable proportion in the changes of the unemployment rate;

- the Durbin-Watson test, with a value slightly above the critical threshold 2, indicates that the residual variables are not auto-correlated

We may appreciate that the model shall be considered representative for the description of the linkage between shadow economy level and unemployment rate at a macro economic level.

As a result, the model can be written:

$$RS = 11,9307 - 0,136497 \times S \quad (7)$$

Analyzing this model we may say that, in the Romanian case, the shadow economy has a moderate impact over the unemployment rata, an increase of 1% determines a decrease of 0,13% for the unemployment rata. This is fully evident after about 2 years because the shadow economy behaves like an “absorber” on the labor market, so the deficit offer of employment compensated by illegal employment created by shadow economy(illegal work).

The trends of historical RS, estimated RS with the model and the residual values, in Romania’s case for the time interval 1990-2007are presented in Figure 2.

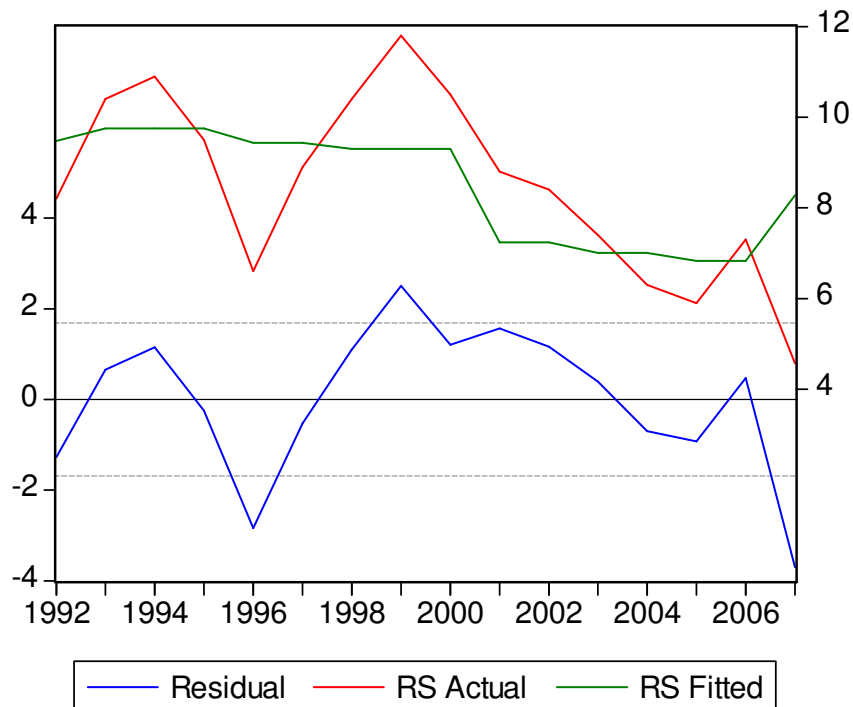


Figure 2 – The trend of RS, estimated RS with the model and the residual values, in Romania, for the time interval 1990-2007

3. The modeling of the impact of show economy on net average monthly salary is based on a one-variable regressive model like:

$$Y_t = \alpha + \beta_i x X_t + \varepsilon_t \quad (8)$$

where Y_t is the dependent variable - SNL (net average monthly salary), α the intercept coefficient, β the slope coefficients, X_t the independent variable - S (the shadow economy level, as a weight of GDP), ε_t the random variable, i the number of the variables - 1, and t the time interval (1990-2007).

The model will become:

$$SNL = \alpha + \beta x S + \varepsilon_t \quad (9)$$

After modeling the two time series, the results obtained shall be (Table 4):

Table 4

Statistical tests related to the modelling of the shadow economy level impact on the net average monthly salary

Dependent Variable: SNL
Method: Least Squares

Date: 08/07/08 Time: 01:09				
Sample: 1990 2007				
Included observations: 18				
SNL=C(2)*S				
	Coefficient	Std. Error	t-Statistic	Prob.
C(2)	14.51023	3.120883	4.649400	0.0002
R-squared	0.226455	Mean dependent var		339.5500
Adjusted R-squared	0.226455	S.D. dependent var		401.5301
S.E. of regression	353.1514	Akaike info criterion		14.62562
Sum squared resid	2120171.	Schwarz criterion		14.67509
Log likelihood	-130.6306	Durbin-Watson stat		0.123648

Like in the first model, the intercept coefficient - α was negative, so the regression was recast by excluding the intercept coefficient.

Analyzing the data from Table 4, we can draw the following conclusions:

- the values of standard errors of the regression coefficient are inferior to the value of the coefficient, taken as a module, which strengthens the validity of their estimation, sustained also by small value of probability;

- the correlation coefficient, with a value of 23,15% shows that the statistical relation between the dependent variable - SNL and the endogen variable -S is relatively small; the changes of the shadow economy are included in a diminished proportion in the changes of the net average monthly salary;

- the Durbin-Watson test, with a value slightly above the critical threshold 2, indicates that the residual variables are not auto-correlated.

Accordingly, we may appreciate that the model shall be considered representative for the description of the linkage between shadow economy level and net average monthly salary at a macro economic level.

As a result, the model can be written:

$$SNL = 14,5102 \times S \quad (10)$$

Analyzing this model we may say that, in the Romanian case, the shadow economy has a moderate impact over the net average monthly salary, but a positive one, an increase of 1% determines an increase of 14,5% for the net average monthly salary. In other words, through new work places created by the shadow economy the illegal earnings are growing up which are revolved through the input.

The trends of historical SNL, estimated SNL with the model and the residual values, in Romania's case for the time interval 1990-2007 are presented in Figure 3.

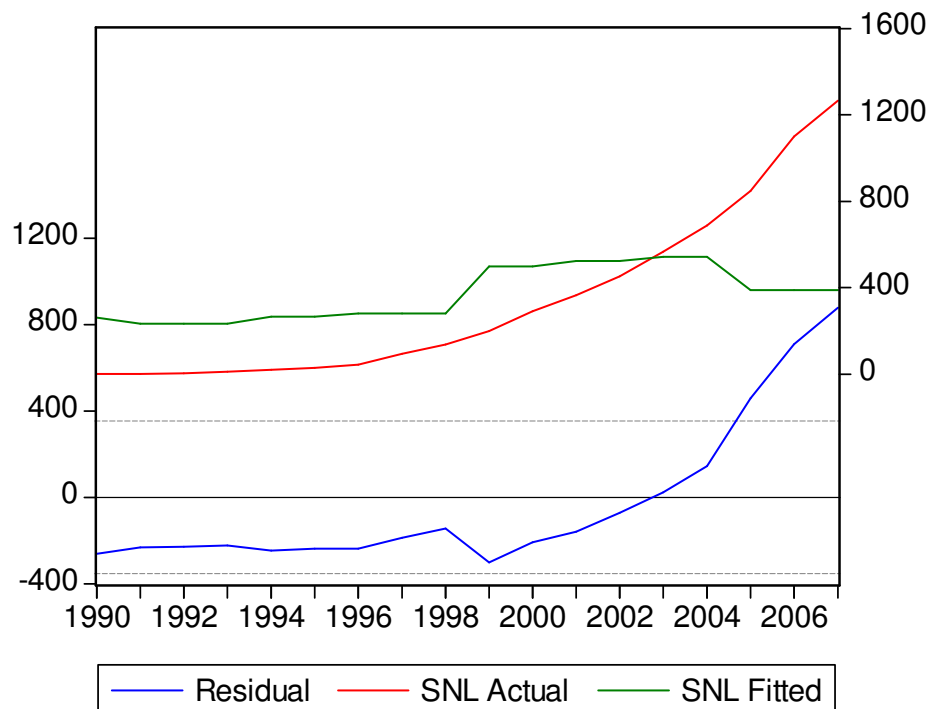


Figure 3 - The trend of SNL, estimated SNL with the model and the residual values, in Romania, for the time interval 1990-2007

Analyzing the four models we may conclude that paradoxically the shadow economy has some visible effects over the legal economic and social life, the main ideas are presented next:

- the shadow economy has a low impact, but a benefic one, on the efficiency of the functioning of the economy, so an increase of its level with 1% determines an increase of GDP with 4,7%. In other properly, the shadow economy is a “necessary evil”, its mechanisms support a legal economic growth of the country.

- the shadow economy has a moderate impact over the inflation rate, an increase of 1% determines a decrease of 6,1% for the inflation rate. In this case, the inflationary pressure is caused by the sustentation of the shadow economy for the goods and services offer on real market and is supplementing the legal offer (compensates the goods and services legal supply).

- the shadow economy has a moderate impact over the unemployment rata, an increase of 1% determines a decrease of 0,13% for the unemployment rata. This is fully evident after about 2 years because the shadow economy behaves like an “absorber” on the labor market, so the deficit offer of employment compensated by illegal employment created by shadow economy(illegal work).

- the shadow economy has a moderate impact over the net average monthly salary, but a positive one, an increase of 1% determines an increase of 14,5% for the net average monthly salary. In other words, through new work places created by the shadow economy the illegal earnings are growing up which are revolved through the input.

References

1. Del’Anno Roberto, (2003), *Estimating the shadow economy in Italy: A structural equation approach*, Discussion Paper, Department of Economics and Statistics, University of Salerno.
2. Feige Edgar, (2004), *The underground economy and the currency enigma*, Supplement to Public Finance/ Finances Publiques, No.49.

3. Schneider Friedrich, (2007), *Shadow Economies of 145 Countries all over the World: Estimation Results over the Period 1999 to 2003*”, Working Paper No. 2005-13, Center for Research in Economics, Management and the Arts (CREMA), Basel.
4. Schneider Friedrich, (2000), *Dimensions of the Shadow Economy*, The Independent Review, v.V, n.1.