



Munich Personal RePEc Archive

## **Business cycle and factor income shares: a VAR sign restriction approach**

Tonni, Lorenzo

University of Rome La Sapienza

15 September 2022

Online at <https://mpra.ub.uni-muenchen.de/116517/>  
MPRA Paper No. 116517, posted 27 Feb 2023 06:40 UTC

# Business cycle and factor income shares: a VAR sign restriction approach

Lorenzo Tonni\*

*Department of Economics and Law  
Sapienza University of Rome*

September 2022

## Abstract

This paper has a twofold objective. Firstly, to provide a comprehensive literature review of the theories that explain the cyclical interaction between factor shares and economic activity. Secondly, to assess if there is empirical evidence supporting these theories while overcoming the strong criticalities present in the current empirical literature. To this end, a Bayesian VAR identified with sign restrictions is set up. The results suggest that countercyclical fluctuations in the labor share are mainly driven by the pro-cyclicality of labor productivity - consistent with *overhead costs* and *risk distribution* theories - and by the Phillips Curve effects upheld by *Goodwin*. The model does not support the expansive effect of a capital share rise suggested by Goodwin. In contrast, there is partial evidence favoring the *biased technical change* theory.

**Keywords:** factor shares, business cycle, labor share, VAR, sign restrictions.

**JEL Codes:** C32, E25, E32.

---

\*Email address: [lorenzo.tonni@uniroma1.it](mailto:lorenzo.tonni@uniroma1.it)

# 1 Introduction

The persistent cyclicity of factor shares of income is becoming increasingly recognized as a business cycle stylized fact (see, among others, Young, 2004 [26]; Rius- Rull and Llopis, 2010 [22]; Shaio and Silos, 2014 [23]; Boldrin, 2019 [7]; Barrales-Ruiz et al., 2022 [3]). This recurrent observed pattern consists of a decreasing labor share during the output expansion that peaks before the latter and then rises in the late expansion phase. Figure (1) plots the leads and lags correlations between the US labor share and the real GDP between 1951 and 2019. Both series (quarterly) are from the Bureau of Labor Statistics. After taking the natural logarithm, the data have been filtered with the Hodrick-Prescott filter to obtain the cyclical component. The negative contemporaneous correlation (-0.32) indicates that the labor share is slightly counter-cyclical. The maximum correlation (about 0.47) is reached after four lags and is higher than the contemporaneous one. This implies that the labor share lags output and is positively correlated after four quarters since its initial increase.

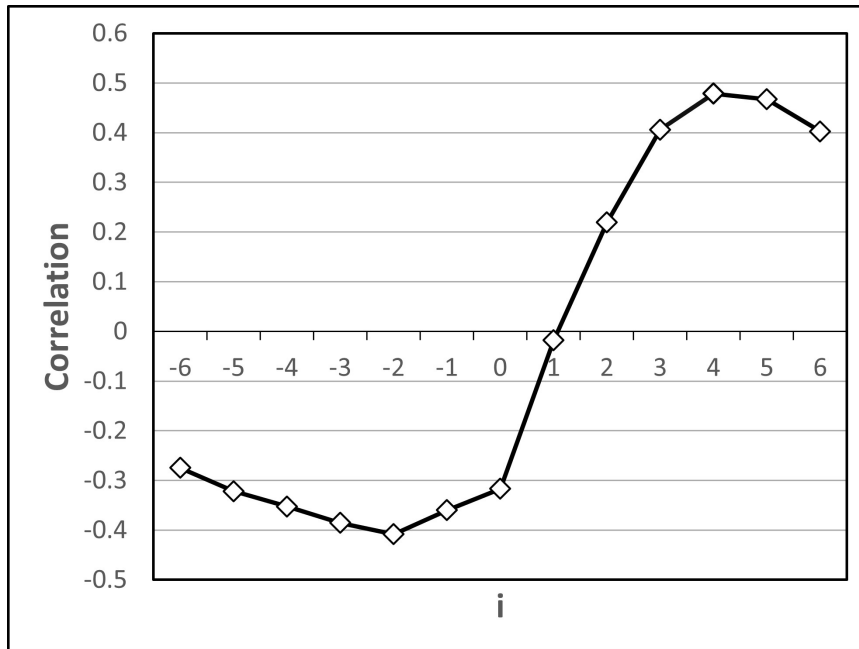


Figure 1: Correlation of Labor's share ( $t+i$ ) and Real GDP ( $t$ )

Several theories have been proposed about this observed phenomenon. However, their soundness is difficult to assess as the VAR literature on this topic has significant shortcomings. Firstly, the applied Cholesky identification scheme forces the results in a specific direction, a priori discarding the role that some theories might play in generating the cyclicity of factor shares of income.

Another critical issue is that the bivariate structure of the models used does not allow the different channels theorized in the literature to be properly disentangled and tested simultaneously. After reviewing the theoretical and empirical literature on the topic, this paper directly tests the theories on the cyclicity of factor shares overcoming the critical issues mentioned above. To this end, a Bayesian VAR identified with sign restrictions is set up. To the best of my knowledge, this is the first paper to do so.

The results suggest that pro-cyclical labor productivity mainly drives the counter-cyclicity of the labor share. This phenomenon is consistent with what is expected by the theories of *overhead costs* and *risk distribution*. According to the former, given the presence of overhead costs - which act as fixed costs - following a positive demand shock, there would immediately be a fall in unit labor costs and labor share. Instead, according to the risk distribution theory, the counter-cyclicity of labor share is generated by the workers' will to hedge against the business cycle risks by setting acyclical wages with firms, preventing labor remuneration from matching fluctuations in labor productivity. In contrast, the results show weak evidence favoring the expansive effect of a profit share rise upheld by Goodwin. This theory reverses the causal relationship generating the counter-cyclicity of labor share. It is the higher profitability resulting from a reduction in the labor share that stimulates economic activity through higher business investment. However, the results support the other pillar of Goodwin's model - *the Philips curve mechanism* - which explains for the observed lagging behavior of the labor share to output. Accordingly, wage stickiness generates a delayed response of labor remuneration (and labor share) to changes in labor market conditions along the business cycle. Finally, the results show partial evidence favoring the *biased technical change theory*, according to which the induced emphasis of RD on labor-saving technologies in response to labor cost variations determines cyclical labor share fluctuations.

The remainder of the paper is organized as follows. Section 2 reviews the theoretical channels the literature proposes to explain the observed cyclicity of factor shares of income. Section 3 reviews and discusses the empirical literature on the topic, highlighting its main shortcomings. Section 4 tests the theories reviewed in Section 2 overcoming the critical issues outlined in Section 3. Section 5 concludes.

## 2 Theoretical literature

The first theory on the cyclical interaction between functional income distribution and output can be attributed to Goodwin (1967) [17]. The model traces the predator-prey models used in biology (Lotka, 1925 [21]; Volterra, 1936 [25]), where labor and capital conflict with each other but

exist symbiotically. Workers consume all of their income while entrepreneurs save it all. Say's law ensures that all entrepreneurs' savings are invested, implying that an increase in the profit share has an expansionary effect on output, producing the looked-for simultaneous negative correlation between labor share and GDP. A Phillips curve ensures that following the tightening of the labor market caused by the output expansion, wages begin to rise with some lags. The lagged wage increase reduces the profit share (and output) until the subsequent wage fall restarts the cycle. Phases of expansion of production and profit share are then followed by phases of contraction in a clockwise cycle in the profit share-activity plan. Note that all labor share movements are driven by changes in the real wage growth rate, as labor productivity growth is constant.

The second strain of theoretical literature focuses on factor substitution generated by 'biased technical change' as the driver of functional distribution fluctuations across the business cycle. Biased technical change (Blanchard et al., 1997 [5]; Caballero and Hammour, 1998 [8] and Acemoglu, 2002 [1]) refers to any introduction of new technologies, change in production methods, or change in the organization of work that increase labor productivity allowing to substitute labor with capital in response to an increase in labor cost. The rise in labor productivity and GDP reduces the original increase in the labor share, generating the looked-for negative correlation between labor share and GDP. Young (2004) [26] was the first to propose this mechanism as a possible source of the labor share counter-cyclicality. This argument is used to justify stochastic factors' elasticities in the Cobb-Douglas production function. Since in a Cobb-Douglas production function, the output elasticity of a factor represents its income share, changes in the latter automatically cause variations in factor productivity, as predicted by the theory of Biased technical change. The cyclicality of factor shares is not self-sustaining as in Goodwin (1967) but stems from exogenous stochastic shocks as in all RBC models. A more structured model is that of Boldrin et al. (2019) [7], which splits the business cycle into two phases. During the *growth phase*, output growth is driven by the adoption of labor-saving technologies, i.e., by replacing a less advanced type of capital with a new vintage incorporating more advanced technology. In this phase, the profit share increases since labor productivity rises more than real wages due to the capital replacement process. During the *build-up phase* - i.e., when all the capital of the old vintage has been entirely replaced by the new one - firms keep widening the new capital, the employment increases, and so does the real wage. In this phase, a lower output growth, a declining capital price, and a rising wage reduce the profit share. When, during the build-up phase, the price of capital has declined enough, it becomes profitable to start replacing the old capital with a more advanced vintage of capital, and a new growth phase begins. In this paper, the fluctuations of the labor share during the business cycle are not occasional events arising as a response to exogenous shocks

but are - only model along with Goodwin (1967) [17] - "systematic and recurrent features of the economy". In other words, there is no balanced growth path; instead, the economy endogenously alternates between upturns accompanied by a rising profit share and downturns accompanied by a falling profit share. Furthermore, cyclical variations in factor prices are the engine of technological progress and long-run economic growth. This model and Goodwin (1967) [17] are the only ones generating a self-sustaining cycle in the factor shares of income. All other models described in the rest of this section only reproduce the observed correlations between variables after exogenous stochastic shocks. They do not generate endogenous cycles in the labor share-activity plane.

The third strain of literature focuses on the role played by increasing return to scale. The pro-cyclicality of profit share is generated by the presence of 'overhead costs', which in turn generate increasing returns to scale. Overhead costs are all those expenses associated with running a business that cannot be directly linked to producing a product or service (e.g., rent, facilities, management pay, insurance, accounting, or legal expenses). They act as fixed costs, generating a fall in unit labor costs and labor share as output increases. Ambler and Cardia (1998) [2] build an RBC model in which the production function differs from the conventional Cobb-Douglas in two aspects. Firstly, it shows decreasing average costs due to the overhead costs. Secondly, a return to scale parameter determines if the decreasing average costs are coupled with constant or decreasing marginal costs, amplifying the factor shares oscillations. On the other hand, the effect of overhead costs is counterbalanced by the possibility of firms entering (exiting) the market when the economy is in an upturn (downturn) phase. In the limiting case where the entry/exit is instantaneous, the distributive cycle disappears since the increase (decrease) in output is entirely borne by new firms' entry (exit) into the market. In this case, output per firm is constant, and so are the aggregate average costs. This is what happens in Devereux et al. (1996) [14], which therefore represents a limiting case of Ambler and Cardia (1998) [2] when the entry/exit of new firms into the market is instantaneous. On the other extreme, in Hornstein (1993) [19], as there is no possibility of entry/exit from the market, the fluctuation of factor shares is at its maximum.

Hansen and Prescott (2005) [18] shares with this strand the hypothesis of non-constant return to scale, although the returns are decreasing and generated by a different mechanism. They use a decreasing return to scale assumption at the plant level to guarantee that operating many small identical plants is optimal rather than one large one. In this economy, not all plants are always used in the production process, but there can be some idle capacity. When capacity constraints do not bind, plant capital is not a scarce factor and, consequently, does not earn income. Hence, in this case, the labor share is larger. When during periods of expansion, all capacity is used, the return on capital increases, generating a pro-cyclical profit share.

The fourth strand of literature focuses on the distribution of the risk between workers and entrepreneurs over the business cycle and, more generally, on the role played by a non-competitive wage setting and frictions in the labor market. The main idea underlying this strand is that workers enter into contracts with capitalists that prevent wages from falling during a recession (as if they were determined only by marginal labor productivity) and vice versa during an expansion. In other words, it is the will of workers to insure themselves against fluctuations of the business cycle that makes real wages acyclical, which in turn, combined with pro-cyclical labor productivity, generate the looked-for counter-cyclical of the labor share. Gomme and Greenwood (1995) [16] assume that *"built into labour income is an insurance component designed to provide workers with some degree of protection against business cycle fluctuations. This insurance component inserts a wedge between marginal product of labour and measured wages"*. Boldrin and Horvath (1995) take a similar approach [6] which, however, differently from Gomme and Greenwood (1995), assume that the desire of workers to hedge against the risk of fluctuations in the economic cycle stems from a double assumption. Firstly, since workers are not endowed with wealth, they cannot access (imperfect) financial markets like their employers to achieve intertemporal consumption smoothing. Secondly, employers are less risk-averse than workers and thus more willing to take on the business cycle risks by agreeing on partially fixed wages for a certain period before output is realized.

Closely to this strand of literature, Rios-rull and Choi (2009) [12] depart from the baseline RBC model by adding frictions in the labor market and a non-competitive wage setting. These two changes generate a countercyclical labor share. This occurs because as output increases, on the one hand, search and matching frictions cause employment to have a lagging behavior. On the other, Nash bargaining creates a wedge that prevents the real wage from adjusting immediately to productivity. However, the model fails in replicating the looked-for hump-shaped response of the labor share to an output shock found in Rios-Rull and Llopis (2010) [22]. Indeed - as we will see later - in a distribution-activity VAR identified with Cholesky where the activity variable is ordered first, the impulse response function of the labor share to an output shock is negative on impact but overshoots after five quarters. Nash Bargaining is sufficient to replicate the countercyclical but not the overshoot. Shao and Silos (2014) [23] introduce barriers to market entry to capture this effect. A productivity shock reduces the effective capital needed for a start-up to enter the market, reducing the demand for capital per entrant. The countercyclical **perchè?** interest rate dampens the initial fall in labor share, reducing the contemporaneous negative correlation with output and bringing it closer to that observed in the data. In addition, the costly entry delays the rise in wages and employment by producing the looked-for hump-shaped IRF of the labor share to a productivity shock. With the same aim of reproducing the observed overshooting, Colciago and

Rossi (2015) [13] introduce a countercyclical mark-up generated by the entry of new firms into the market following an expansive shock. The greater competition resulting from the larger number of firms pushes down the mark-up resulting in an overshoot and a labor share higher than the initial one.

Finally, the fifth strain of literature relies on a standard Cobb-Douglas production function making the share parameter stochastic. Since in a Cobb-Douglas production function the factors' output elasticities represent factor shares, shocks to the latter result in changes in output. The aforementioned Young (2004) [26] relies on an RBC model with stochastic factors' elasticities in the Cobb-Douglas production function. Casteneda et al. (1998) [10] also propose a model along these lines, although their aim is not to analyze the relationship between functional income distribution and real activity. Rios-Rull and Llopis (2009) [22] firstly estimate a bivariate activity-labor share VAR identified with Cholesky with the activity variable ordered first. Then, the estimated relationship is plugged into the Cobb-Douglas production function of an RBC model. As the TFP increases, the labor share falls on impact because of their estimated negative relationship.

### 3 Empirical literature

The VAR literature on this topic can essentially be divided into two strands. Both are based on bivariate<sup>1</sup> distribution-activity models identified via Cholesky. The first strand (Carvalho and Rezai, 2016 [9]; Basu and Gautham, 2020 [4]; Barrales-Ruiz et al., 2022 [3]) orders the labor share before the real activity variable, thus assuming that distribution can have a contemporaneous impact on output but not vice versa. This assumption is justified based on Goodwin's (1967) [17] model. Accordingly, labor productivity growth is constant and movements in the labor share are entirely driven by real wage growth rate changes. Given the stickiness of the latter, it is reasonable to expect that the labor share does not respond immediately to changes in output. The results stemming from this identification scheme are that following a positive shock to the labor share, the GDP fall is instantaneous and long-lasting. Following a positive shock to GDP, the profit share decreases gradually from the second quarter onwards. These results, firmly in line with the predictions of Goodwin's model, are therefore brought to support this theory.

Conversely, the second strand of literature orders the activity variable before the labor share, implicitly assuming that the former can impact the latter simultaneously but not vice versa. Following the empirical literature of Goodwinian inspiration, we will refer to the ordering of the variables of the first strand as 'standard ordering' and to that suggested by the second strand as

---

<sup>1</sup>Sometimes a third variable is added, but the results remain essentially the same.



'reverse ordering'. Rius-Rull and Llopis (2010) [22], taking an RBC as their theoretical reference model, order productivity (and alternatively GNP) before labor share. Colciago and Rossi (2015) [13] and Shao and Silos (2014) [23] replicate this result. These papers find that an increase in real activity triggers an instantaneous fall in labor share, which after about five quarters overshoots and remains at a higher level than it was at the beginning. The output response to a positive labor share shock is non-significant or positive. Cauvel (2019) [11] attempts to demonstrate the inconsistency of the standard ordering, which would ignore the strong procyclicality of labor productivity due to overhead costs. Firstly, he demonstrates that the results are profoundly different by reversing the variables ordering. Then, he shows that once the procyclicality of labor share is taken into account by cleaning up the labor share of its cyclical component, even applying the standard ordering, the expansionary effect of an increase of the capital share disappears.

### 3.1 A critique

The results obtained with the standard ordering have two shortcomings. First, imposing that economic activity cannot have any contemporaneous impact on the distribution a priori rules out the hypothesis that procyclical movements in labor productivity drive cyclical fluctuations in the labor share, as suggested by Cauvel (2019) [11] and Lavoie (2017) [20]. Therefore, the associated results could be nothing more than spurious associations from forcing the model in that direction. A similar criticism can be made against reverse ordering in limiting the theories of Goodwin and biased technical change. Indeed, in these theories the direction of causality runs from distribution to real activity. In contrast, the reverse ordering imposes a zero restriction on the contemporaneous reaction of output in response to changes in functional distribution. However, there is a fundamental difference concerning the implicit assumptions in the two identification schemes. A reaction of labor productivity following an output shock could be automatic and instantaneous, as in the case of overhead costs or risk distribution theories. On the other hand, any direction of causality from distribution to economic activity requires a reaction on the part of economic agents, which can take more time to show significant effects. This is the case of the rise of firms' investment following an increase in the profit share predicted by the Goodwin model or the biased technical change triggered by the rise in labor cost. The slower response of agents makes the assumption embodied in the reverse ordering - no response of economic activity to changes in labor share for a quarter - less restrictive. The higher the frequency of the time series, the less restrictive is the reverse ordering.

We now come to the second criticism that can be made of the standard ordering. According to

the models that apply this identification scheme, the expansionary effect caused by an increase in the profit share explains the negative correlation between labor share and economic activity. However, a shock to the labor share as such does not exist. Different shocks that give rise to an increase in the labor share can have an opposite effect on GDP. For example, the profit share could increase both following a decrease in wages and following an increase in the mark-up. However, in the first case, there would be a fall in prices and the real exchange rate and vice versa in the second, with potentially opposite effects on GDP.

This paper aims to overcome the critical issues associated with both Cholesky's orderings through a more sound identification scheme based on the sign restrictions approach. Through this new framework, this paper aims to determine the main theoretical mechanisms that drive the distributional cycle by examining whether there is empirical evidence for the theories outlined in the first section.

## 4 Empirical strategy

### 4.1 Data

The data used in the following models refer to the U.S. economy from 2001q1 to 2019q4 and come from the Bureau of Economic Statistics. The reason for choosing this short period is the unavailability of earlier data regarding the number of workers who left voluntarily (*QUITS*) collected by the *Job Openings and Labor Turnover Survey* of the BLS. However, as shown in Section 4.2, the estimates for this period for the bivariate model are in line with those in the literature for more extended time periods. In addition to quits the other variables used in this paper are the total number of hours worked in the economy (*HOURS*), real GDP (*GDP*)<sup>2</sup>, nominal hourly wages (*WAGES*), the Consumer Price Index (*CPI*) and the labor share (*LABOR SHARE*). Note that with the series of nominal wages, CPI, hours worked and real GDP, it is possible to reconstruct the labor share series provided by the Bureau of Labor Statistics. This is why - unlike the bivariate model of section 4.2 based on labor share and GDP - in section 4.3, the labor share does not enter directly into the model. All variables are in natural logarithms and enter the model in levels; the Bayesian specification of the model is, in fact, compatible with the use of non-stationary variables (Sims, 1990 [24]).

---

<sup>2</sup>The real GDP series is obtained by dividing the corresponding nominal series by the Consumer Price Index provided by the BLS.

## 4.2 The bivariate model

The purpose of this section is twofold. First, to show how the adoption of the widely used Cholesky ordering, besides not being theoretically sound - as discussed in Section 3.1 - is not robust to variable inversion. Second, the results of the bivariate model are intended to show that even with this shorter sample period the findings are in line with those found in the literature using longer samples. This allows us to compare the results from the bivariate model identified via Cholesky with a more robust identification scheme based on sign restrictions in the next section.

The reduced form of the estimated model reads:

$$Y_t = C + \sum_{i=1}^n A_i Y_{t-i} + u_t \quad (1)$$

Where  $Y_t$  is the vector of endogenous variables:  $Y_t = [GDP_t; \text{labour share } t]$ ,  $C$  is a vector of reduced-form constants,  $A_i$  is a matrix of reduced form parameters and  $u_t$  is a vector of reduced-form errors. The model is estimated with a Bayesian approach based on an Independent Normal-Wishart prior<sup>3</sup>. Hyperparameters are selected in such a way as to maximize the marginal likelihood through a grid search procedure. In section 4.3 a *dummy initial observation strategy* restricts the prior toward unit roots or cointegration to prevent draws obtained from the posterior from being characterized by explosive unit roots (Dieppe et al., 2018 [15]).

As is well known, to perform structural analysis in a VAR framework, it is necessary to map the reduced-form errors to the structural ones by imposing restrictions on the variance-covariance matrix through the B matrix.

$$u_t = B\epsilon_t \quad (2)$$

The simplest method is to obtain B from a Cholesky decomposition of the variance-covariance matrix. This way, the variable ordered first in the vector  $Y$  will be exogenous on impact to the second, but not vice versa.

**Standard Ordering.** We first run the model with the labor share ordered first and GDP as the second variable. The resulting impulse response functions are shown in Figure (2).

As can be seen, GDP reacts negatively to an increase in the labor share, while the latter responds positively from the third quarter onward to an increase in GDP. Those results perfectly align with the literature that adopts this Cholesky ordering (Carvalho and Rezai, 2016 [9]; Basu and Gautham, 2020 [4]; Barrales-Ruiz et al., 2022 [3]).

---

<sup>3</sup>100,000 draws were performed of which the first 80,000 were discarded.

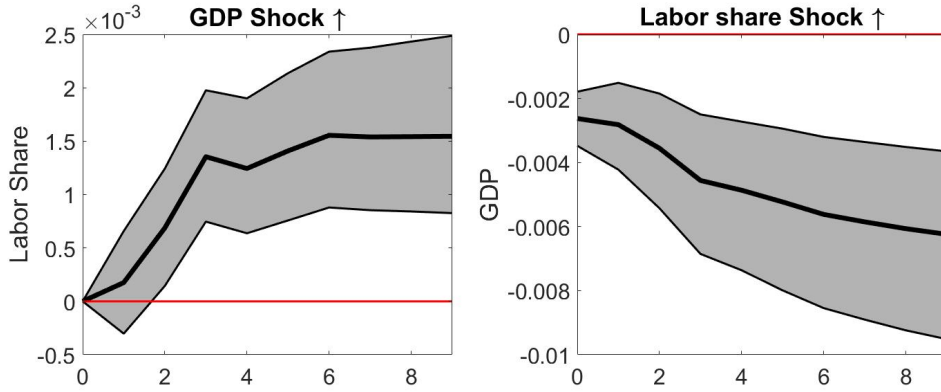


Figure 2: IRF with the standard ordering

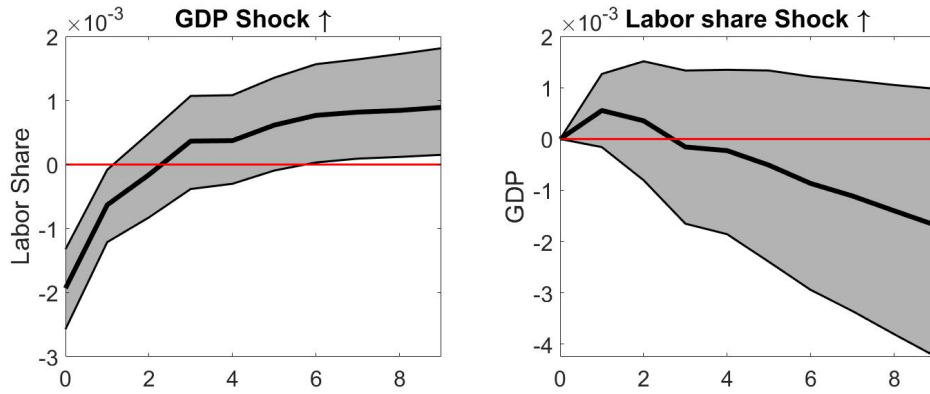


Figure 3: IRF with the reverse ordering

**Reverse Ordering.** Figure (3) shows the results of the same model but with the order of the variables reversed, i.e., with the *GDP* exogenous on impact to the *labor share*, but not vice versa.

The response of the labor share to an increase in GDP is very different from the previous one; in fact, it is negative at the impact and then overshoots and becomes positive after about seven quarters. These results are in line with those found by Rios-Rull and Llopis (2009) [22] and Cauvel (2019) [11] in bivariate models identified with the reverse ordering. On the other hand, the response of GDP to an increase in the labor share is non-significant, which is firmly at odds with the results obtained with the previous ordering.

Given the theoretical criticalities of both Cholesky orderings and the non-robustness of the results to their inversion, we rely on sign restrictions as an alternative identification scheme.

Through this method - more theoretically robust and less restrictive than Cholesky - we can test the predictions of the theories exposed in Section 2 and check if the results of one of the two (if at all) strands of empirical literature are supported.

### 4.3 A sign restriction approach

In this section, in order to overcome the theoretical and empirical criticalities exposed above, we estimate a five variables model identified through the sign restrictions approach. This approach fixes the fundamental structural identification problem - each VAR in reduced form corresponds to infinite VARs in structural form - retaining all possible structural models associated with a single reduced form that satisfies the imposed sign restrictions. This results in the fact that there is no longer a mapping between shocks and variables as in Cholesky. The median is generally taken of all the IRFs generated in this way, and confidence intervals are constructed based on their distribution.

The benefit of this new framework is twofold. On the one hand, it allows us to avoid imposing hardly justifiable zero restrictions and, on the other, to decompose what in the bivariate model were the shocks to GDP and labor share into the shocks that theoretically drive these two variables. The applied identification scheme is reported in Table table (1) and table (2).

	Demand $\uparrow$	Workers Bargaining Power $\uparrow$	Firm Bargaining Power $\downarrow$	Automation $\uparrow$
<i>Hours</i>	+	/	/	-
<i>Wages</i>	/	/	/	/
<i>CPI</i>	+	/	-	-
<i>GDP</i>	+	/	/	+
<i>Quits</i>	+	/	/	-

Table 1: Sign Restrictions on periods 1 and 2

The five variables that enter the model are *hours* worked, nominal hourly *wage*, consumer price index (*CPI*), real *GDP* and the number of voluntary *quits* from the labor market — the structural shocks: demand, automation, labor bargaining power and firm bargaining power. Given the small sample, the following model is estimated with two lags to preserve degrees of freedom<sup>4</sup>.

<sup>4</sup>Nevertheless, Section 4.5 estimates different lag specifications as a robustness check.

	Demand $\uparrow$	Workers Bargaining Power $\uparrow$	Firm Bargaining Power $\downarrow$	Automation $\uparrow$
<i>Hours</i>	+	/	/	-
<i>Wages</i>	+	+	+	-
<i>CPI</i>	+	+	-	-
<i>GDP</i>	+	/	/	+
<i>Quits</i>	+	-	/	-

Table 2: Sign Restrictions on period 3

All the restrictions are applied on the first three quarters except for the nominal hourly wage, which is restricted just on the third quarter. This choice is made not to force wages to vary immediately if they were sticky. As we will see, only for the shock to workers' bargaining power, restrictions on prices and quits are imposed just on the third quarter after the shock.

In detail, a positive *aggregate demand* shock is that shock that generates an increase in hours worked, GDP, price level and the number of workers voluntarily quitting their jobs for the first three quarters. The nominal wage is restricted to rise only in the third quarter, allowing for wage stickiness. The rationale behind the job quits restriction comes from the observation that this variable generally increases in periods of expansion in line with the number of new people hired (Appendix A). This phenomenon is justified by the labor market's greater job opportunities and dynamism when aggregate demand increases. The probability of quickly getting a new job is higher in periods of expansion, making it less risky to quit your current job voluntarily.

Since we have restricted all variables in this shock, we are not really interested in the response of the variables entering the model but rather in the response of labor share, labor productivity and real wages. These variables can easily be derived by combining the responses of the nominal wage, prices, hours worked, and GDP. The impulse response functions of the *labor share*, *labor productivity* and *real wages* are computed as follows:

$$\ln(LS_t) = \ln(Hours_t) + \ln(NominalWage_t) - \ln(GDP_t) - \ln(CPI_t) \quad (3)$$

$$\ln(PROD_t) = \ln(GDP_t) - \ln(Hours_t) \quad (4)$$

$$\ln(\text{RealWage}_t) = \ln(\text{NominalWage}_t) - \ln(\text{CPI}_t) \quad (5)$$

The response of these three variables to this shock allows us to evaluate the predictions of several theories discussed earlier. Any fall in the labor share on impact caused by an increase in labor productivity would confirm what the theory of the *overhead costs* predicts. It would also be compatible with the *risk distribution* theory predictions if coupled with a real wage that does not immediately respond to the shock. This result would also invalidate the soundness of *standard ordering* since the latter imposes no contemporaneous changes in the labor share following an output shock. On the contrary, a labor share that does not respond significantly to the shock, coupled with a lagged real wage and labor share increase, would confirm what is predicted by the *Goodwin cycle*. This pattern would also support the soundness of the *standard ordering* identification scheme.

On the other hand, a positive shock to the *bargaining power of workers* is assumed to generate an increase in the real hourly wage and the price level (as firms face higher production costs) after two quarters and a fall in the number of workers quitting their jobs. This last assumption is fundamental to disentangle this shock from the demand and automation shocks. It is motivated by the fact that fewer workers may decide to leave the job as the working conditions improve. Or, vice versa, that more workers choose to leave their jobs when working conditions deteriorate. The variables hours and GDP are left unrestricted. Furthermore, only the posterior draws producing a rise in nominal wages larger than prices are retained to ensure that this shock generates an increase in real wages.

A gradual increase in labor productivity that generates a parallel increase in output such that an initial increase in labor share dies out would confirm what the *biased technical change* predicts. A GDP fall would support both *Goodwin's model* and the soundness of the *standard ordering*.

A positive shock to *firms' bargaining power* is identified as an increase in the mark-up. Hence, it is specified imposing the price level to rise for the first three quarters and the nominal wage to fall only in the third quarter. The other variables are left unrestricted.

If the bivariate model - which does not distinguish between sources of variation in labor share - is robust, we would expect the GDP to respond in the same direction following both an increase in workers' bargaining power and a fall in firms' bargaining power. Conversely, an output response of the opposite sign would indicate that the results coming from a shock to the labor share are misleading.

Finally, an *automation shock* is identified imposing an increase in GDP and a fall in hours

worked, nominal wages, prices and quits. The latter is motivated in a similar way to the demand shock. The labor demand lowers following a positive automation shock, resulting in fewer workers leaving their jobs for fear of not finding another one.

Figure 4 shows the theoretical differences compared with the bivariate model. In the latter, there are only two types of shocks, one distributive (Labor Share) and one to GDP (last line of Figure 4). In the sign restrictions model, the labor share shock is decomposed into two sub-shocks (bargaining power of firms and workers), allowing for a possible different response of the GDP (second line, Figure 4). What was the GDP shock in the bivariate model has also been partitioned into two sub-shocks: an aggregate demand shock and an automation shock. Finally, the first row of Figure 4 divides these shocks into demand shocks (aggregate demand shock) and supply shocks (automation, firms and labor bargaining power shocks).

Demand Shocks	Supply shocks		
Demand	Automation	Workers bargaining power	Firms bargaining power
GDP		Distribution	

Figure 4: Structural shocks

## 4.4 Results

Figure (5) shows the structural impulse response functions of model variables, while Figure (6) shows the implied IRFs of labor share, labor productivity and real wages.

After a positive *demand shock*, the response of the labor share (Figure 6) is negative on impact to become non-significant from the third quarter onwards, eventually overshooting the initial level, even if not significantly. At the same time, the impact response of labor productivity is positive on impact to become non-significant from the second quarter. In contrast, the response of real wages is non-significant on impact and then becomes increasingly positive (and statistically significant) from the fifth quarter onward.

This leads us to conclude that fluctuations in demand produce a countercyclical labor share



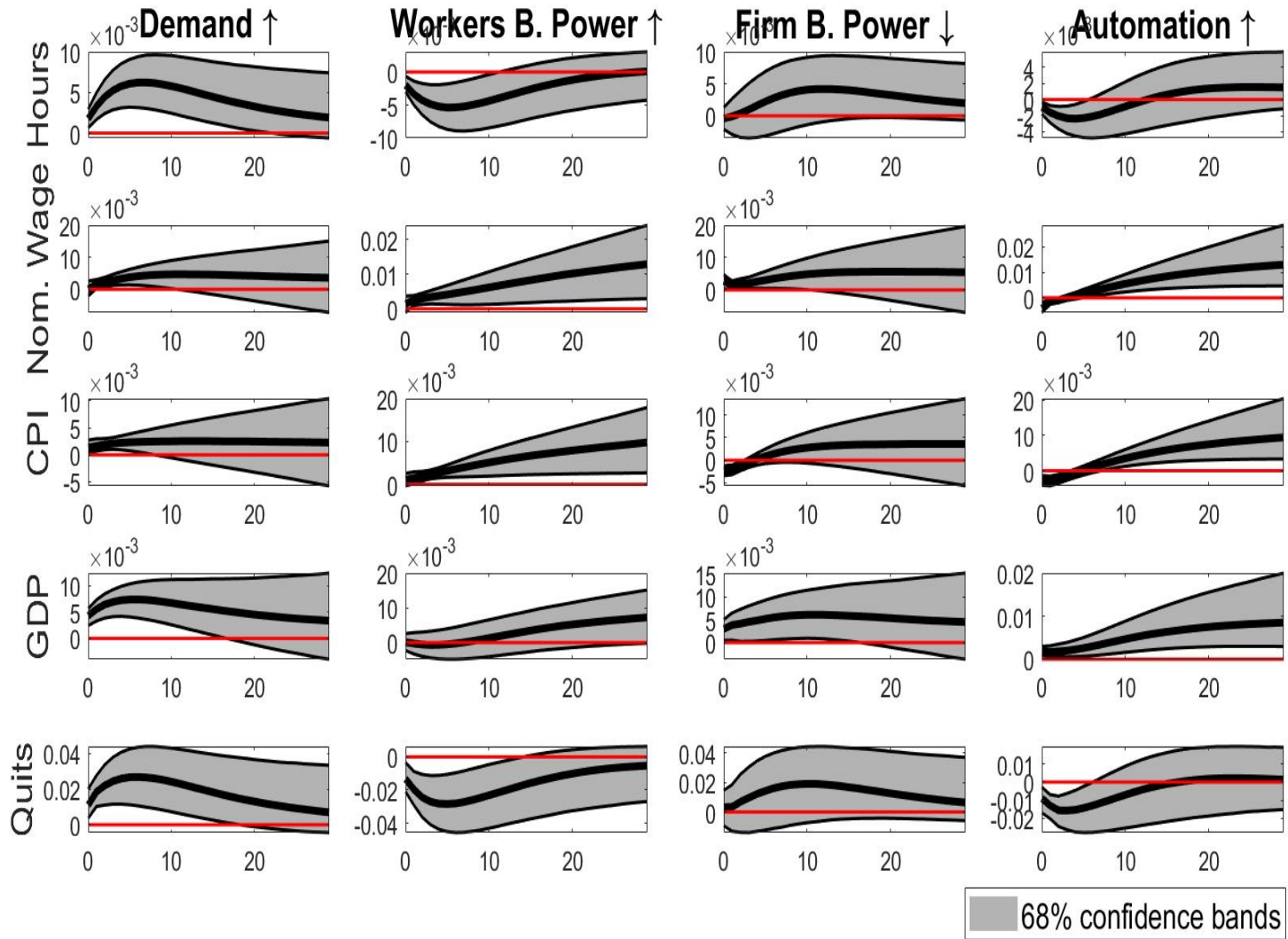


Figure 5: IRFs to structural changes

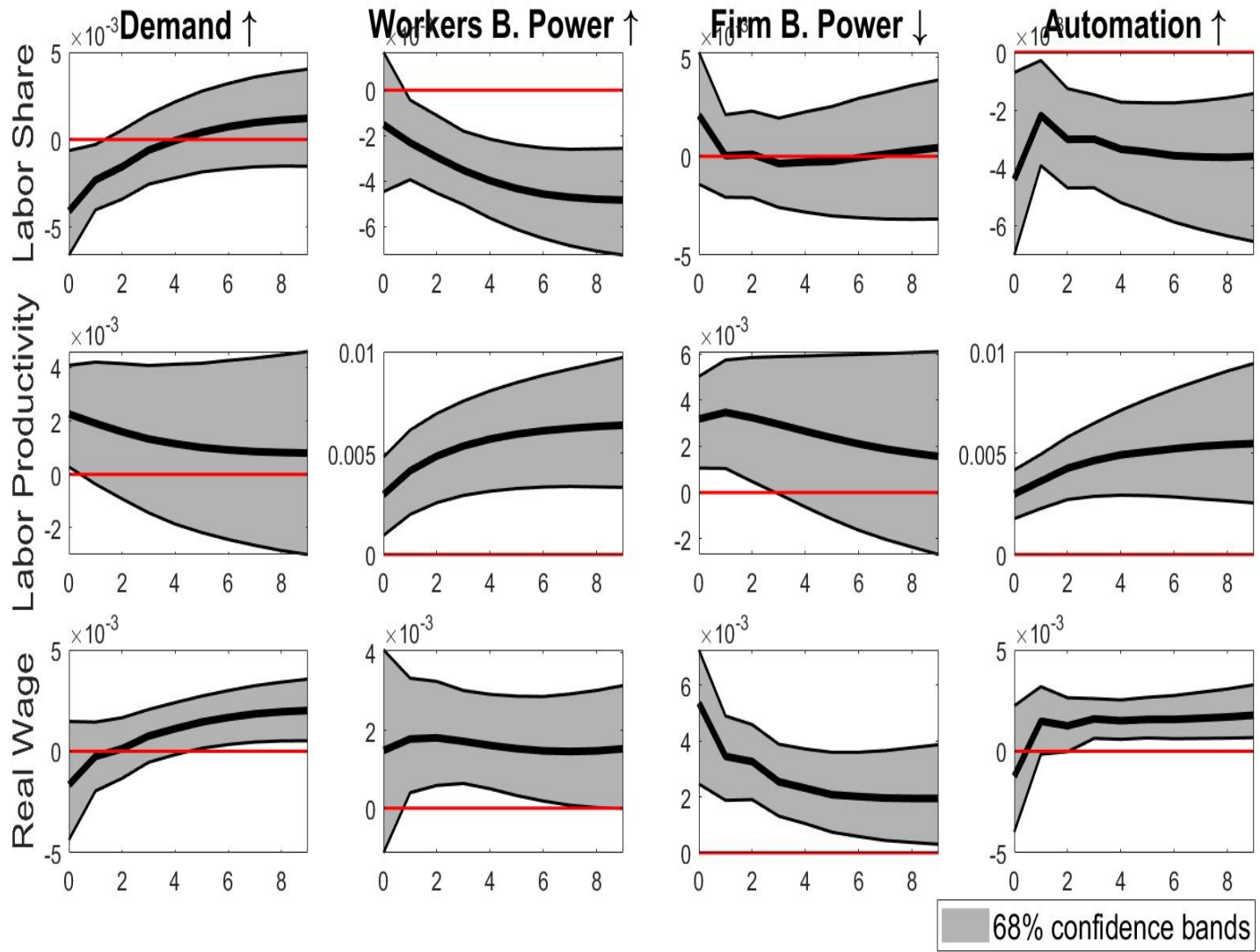


Figure 6: Implied IRFs to structural changes

driven by procyclical movements in labor productivity. Thus, this result confirms what is predicted by the theory of *overhead costs*. It is also in line with what is expected from *risk distribution* theory. Real wages do not react immediately to changes in labor productivity but begin to increase significantly only after five quarters. This lagged increase in real wages contributes to the overshooting of the labor share even though it is not statistically significant. This behavior of real wages is also in line with the Phillips Curve mechanism in *Goodwin's* model. Overall, this shock suggests that cyclical fluctuations in the labor share are driven by procyclical labor productivity - as theorized by *overhead cost* and *risk distribution* theories - coupled with a real wage that lags outputs - as in the *Goodwin cycle*. While the former effect generates the observed countercyclicality, the induced lagged increase in real wages causes the labor share to return to its initial level, possibly overshooting.

Also, the labor share reaction to the demand shock is similar to that of the labor share to a GDP shock in the bivariate model identified with the *reverse ordering*. In both cases the initial decline of the labor share is followed by an overshooting, even if the latter is non-significant in the demand shock. Instead, it is very different from the response in the bivariate VAR model identified with the *standard ordering*, in which the response of the labor share is never negative.

An increase in *Labor bargaining power* decreases hours worked given the same nominal wage and output (Figure 5). This results in a gradual but steady increase in labor productivity, such that it more than offsets the increase in real wages. The effect is that the labor share declines rather than increases as expected (Figure 6).

This outcome is partly consistent with what is predicted by the theory of *biased technical change*. Indeed, the increase in productivity can be interpreted as the result of firms' efforts to replace the labor factor, which has become more expensive. A missing piece is an initial increase in the labor share associated with the increase in wages. In addition, GDP increases with a much longer lag than expected (roughly 30 quarters). A possible interpretation is that the initial increase in productivity comes at the expense of hours worked to replace the labor factor. Gradually the hours worked return to the initial level and, after about 30 quarters, the higher productivity is passed on from lower hours to a higher GDP.

The lack of an initial increase in the labor share makes it difficult to judge the supposed contractionary effect of a labor share increase predicted by *Goodwin's* model. Nevertheless, this shock actually produces a positive association between profit share and output, as in Goodwin (1967), even though it is an increase in wages and bargaining power of workers to trigger the increase in profit share and output paradoxically. Thus, the mechanism must be different from the one intended in Goodwin's model.

A reduction in *Firms bargaining power* generates an increase in GDP (Figure 5), labor productivity and real wages (Figure 6). This is what economic theory predicts following a reduction in the degree of monopoly and the consequent increase in competitiveness, indicating that the shock is well captured. However, although the median labor share reaction is positive on impact as expected, it is not significant. This happens because the simultaneous increase in labor productivity offsets a large part of the increase in the real wage.

Overall, we can observe that the two distributional shocks (workers' and firms' bargaining power) do not generate reactions in labor share and GDP comparable to those generated with the standard ordering identification. Thus, this weakens the clear-cut expansionary effect of a labor share fall found by the strand of literature relying on the standard ordering.

The *Automation shock* produces - inevitably because of the imposed identification - a fall in labor share and an increase in labor productivity on impact (Figure 6). Unlike the demand shock, the labor share after the initial fall does not return to the original level but remains at a lower point.

## 4.5 Sensitivity Analysis

A first robustness check consists of estimating the same model with 3 and 4 lags to check whether the number of lags used could affect the results. The results - not reported for convenience - are almost identical to those shown in Figures (5) and (6).

In Section 4.3, only the posterior draws producing a rise in nominal wages greater than prices after the workers' bargaining power shock are retained to ensure that this shock generates an increase in real wages. Now, to check that this method does not affect the results, we replace it with the direct restriction that the real wage increases, which enters as the sixth variable in the model. The new identification scheme is shown in Table 3.

The only difference is that it is further imposed that the real wage increases in the third quarter following both a positive shock to workers' bargaining power and a negative shock to firms' bargaining power and decreases to a positive automation shock. The resulting structural IRFs are shown in Figure (7), while Figure (8) shows the IRFs of labor share, labor productivity and real wage. The real wage IRF of the real wage no longer comes from the combination of nominal wages and prices but comes directly from the new real wage variable that enters the model. The latter is also used to calculate the labor share as follows:

$$LS_t = Hours_t + RealWage_t - GDP_t \quad (6)$$

	Demand $\uparrow$	Workers Bargain- ing Power $\uparrow$	Firm Bar- gaining Power $\downarrow$	Automation $\uparrow$
<i>Hours</i>	+	/	/	-
<i>Nom. Wage</i>	+	+	+	-
<i>Prices</i>	+	+	-	-
<i>GDP</i>	+	/	/	+
<i>Quits</i>	+	-	/	-
<i>Real Wage</i>	/	+	/	-

Table 3: Sign Restrictions on period 3

Whereas, labor productivity is calculated as in Eq. (4).

The results obtained are in line with those found in the previous section. The main differences concern the response of labor productivity and real wages to the demand shock. The IRFs of these two variables maintain the same sign. However, the lower bound is on the zero line for labor productivity, and the real wage response is non-significant. Nevertheless, their combined effect does not alter the negative impact response of labor share. In any case, given the large number of degrees of freedom consumed by adding the sixth variable, the results obtained from the previous section's model remain more reliable.

## 5 Conclusion

After providing a comprehensive review of the theories explaining the observed cyclicity of factor shares of income, the paper assessed if empirical evidence supports these theories while overcoming the strong criticalities existing in the related empirical literature. To the best of my knowledge, this is the first paper to do so.

The empirical literature on this topic relies on models identified with Cholesky schemes, whose restrictions skew results in favor of specific theories while ruling out others. Moreover, the associated results are not robust to the inversion of the variables' ordering. A Bayesian VAR identified with sign restrictions was set up to overcome these criticalities. The results suggest that the pro-cyclicity of labor productivity mainly drives countercyclical fluctuations in the labor share, consistent with *overhead costs* and *risk distribution* theories. Indeed, the instantaneous fall

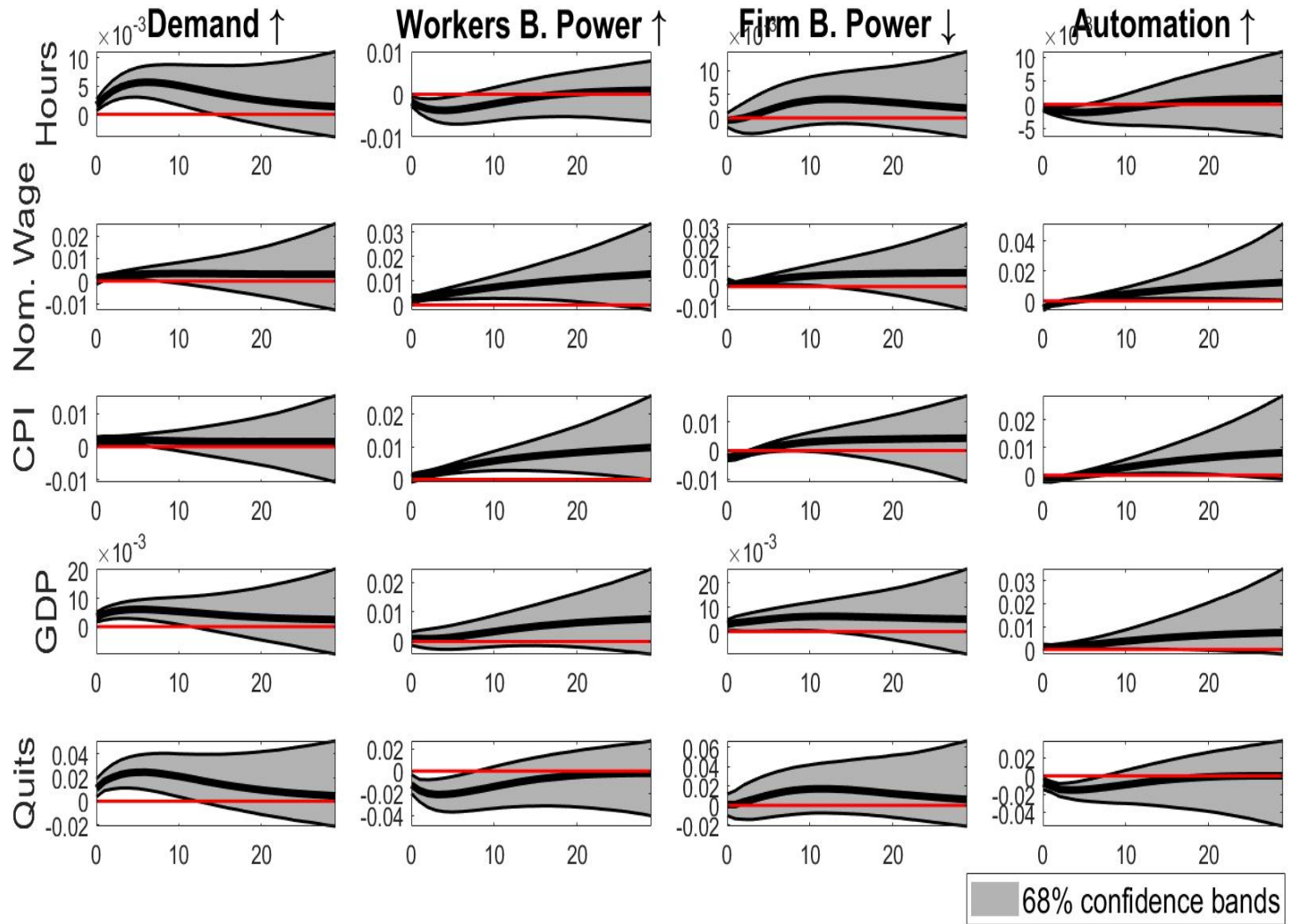


Figure 7: Structural IRFs

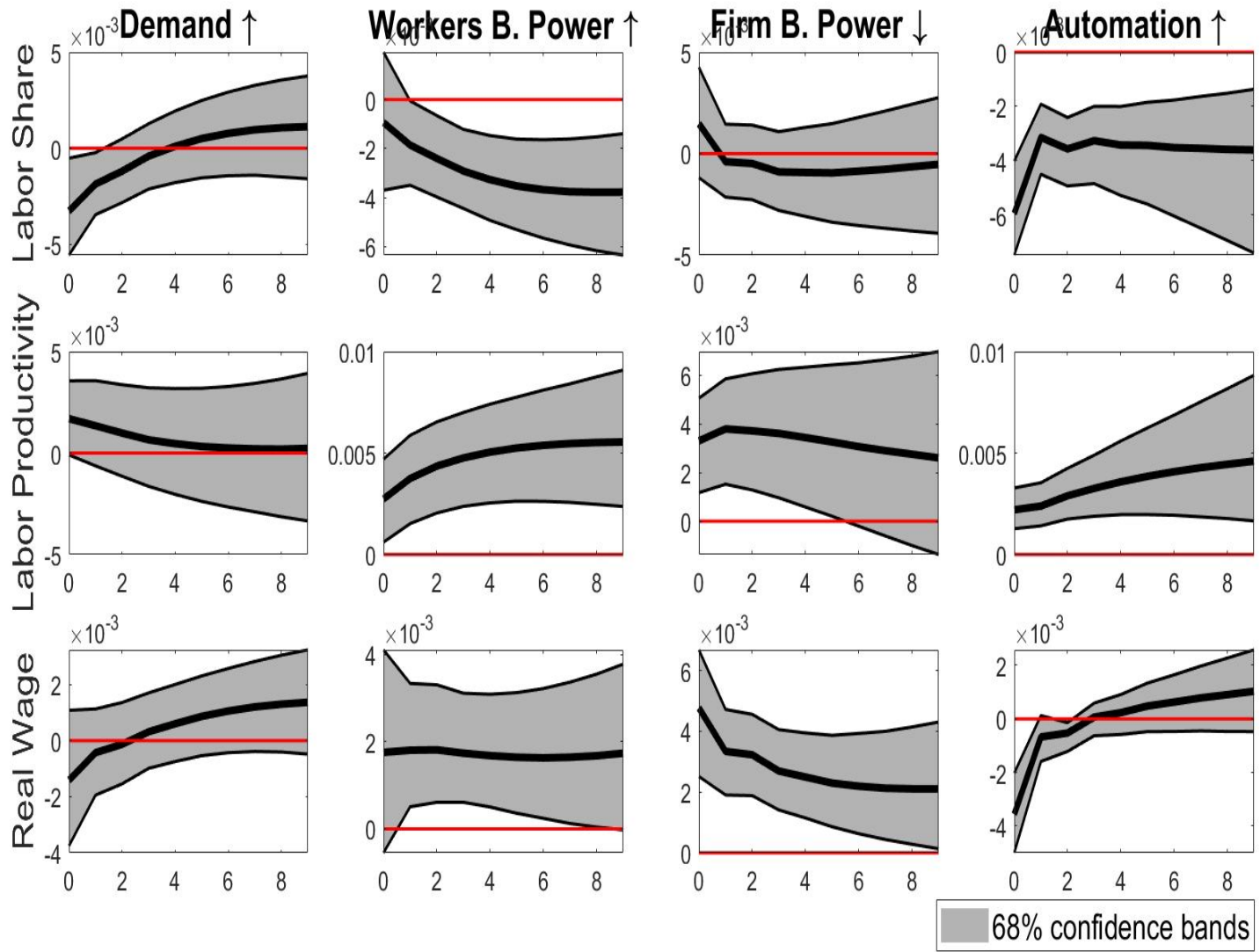


Figure 8: Implied structural IRFs

of the labor share following a demand shock is compatible with the increasing returns to scale generated by the presence of overhead costs. The instantaneous rise in productivity coupled with sticky real wages is also consistent with the workers' will to set acyclical wages to hedge against business cycle risk, as the risk distribution theory predicts. Also, this lagged response of the real wage to demand shocks contributes to the retraction of the initial fall in the labor share to the initial level, supporting the Phillips curve mechanism predicted by the *Goodwin model*. In contrast, it is difficult to judge the other prediction of Goodwin's model - the contractionary effect of an increase in the labor share. Indeed, following an increase in workers' bargaining power, the increase in real wages is more than offset by an increase in labor productivity, yielding, paradoxically, a fall in the labor share rather than an increase in it. Nevertheless, as in Goodwin's model, this shock produces a negative association between labor share and output, although the underlying mechanism generating it is necessarily different. This increase in labor productivity following an increase in workers' bargaining power can be interpreted as the result of firms' efforts to replace the labor factor, which has become more expensive, consistently with the *biased technical change theory*. However, a similar observation as above for Goodwin's model applies here. Namely, the association produced by the results between labor productivity and real wages does not correspond to a positive correlation between labor productivity and labor share - as predicted by the theory, which unexpectedly moves in the opposite direction.

Finally, the results are at odds with those found by the literature relying on bivariate activity-distribution models identified with Cholesky, where the distribution variable is ordered first. This identification scheme a priori rules out the theories of overhead costs and risk distribution and the hypothesis that procyclical movements in labor productivity drive cyclical fluctuations in the labor share. As discussed earlier, our model supports this hypothesis instead. In contrast, the results are compatible with those found by the strand of literature ordering the activity variable before the distributional one in a Cholesky scheme.



## References

- [1] Daron Acemoglu. Directed technical change. *The review of economic studies*, 69(4):781–809, 2002.
- [2] Steve Ambler and Emanuela Cardia. The cyclical behaviour of wages and profits under imperfect competition. *Canadian journal of economics*, pages 148–164, 1998.
- [3] Jose Barrales-Ruiz, Ivan Mendieta-Muñoz, Codrina Rada, Daniele Tavani, and Rudiger Von Arnim. The distributive cycle: Evidence and current debates. *Journal of Economic Surveys*, 36(2):468–503, 2022.
- [4] Deepankar Basu and Leila Gautham. What is the impact of an exogenous shock to the wage share?: Var results for the us economy, 1973–2018. In *Conflict, Demand and Economic Development*, pages 142–167. Routledge India, 2020.
- [5] Olivier J Blanchard, William D Nordhaus, and Edmund S Phelps. The medium run. *Brookings papers on economic activity*, 1997(2):89–158, 1997.
- [6] Michele Boldrin and Michael Horvath. Labor contracts and business cycles. *Journal of Political Economy*, 103(5):972–1004, 1995.
- [7] Michele Boldrin, Yong Wang, and Lijun Zhu. The cyclical behavior of factor shares. In *2019 Meeting Papers*, number 1208. Society for Economic Dynamics, 2019.
- [8] Ricardo J Caballero and Mohamad L Hammour. Jobless growth: appropriability, factor substitution, and unemployment. In *Carnegie-Rochester conference series on public policy*, volume 48, pages 51–94. Elsevier, 1998.
- [9] Laura Carvalho and Armon Rezai. Personal income inequality and aggregate demand. *Cambridge Journal of Economics*, 40(2):491–505, 2016.
- [10] Ana Castaneda, Javier Diaz-Giménez, and José-Victor Rios-Rull. Exploring the income distribution business cycle dynamics. *Journal of Monetary economics*, 42(1):93–130, 1998.
- [11] Michael Cauvel. The neo-goodwinian model, reconsidered. Technical report, FMM Working paper, 2019.
- [12] Sekyu Choi and José-Victor Rios-Rull. Understanding the dynamics of labor share: The role of noncompetitive factor prices. *Annals of Economics and Statistics/Annales d’Economie et de Statistique*, pages 251–277, 2009.

- [13] Andrea Colciago and Lorenza Rossi. Firm dynamics, endogenous markups, and the labor share of income. *Macroeconomic Dynamics*, 19(6):1309–1331, 2015.
- [14] Michael B Devereux, Allen C Head, and Beverly J Lapham. Exit and entry, increasing returns to specialization, and business cycles. Technical report, 1993.
- [15] Alistair Dieppe, Romain Legrand, and Björn Van Roye. The bayesian estimation, analysis and regression (bear) toolbox - technical guide. 2018.
- [16] Paul Gomme and Jeremy Greenwood. On the cyclical allocation of risk. *Journal of Economic dynamics and control*, 19(1-2):91–124, 1995.
- [17] Richard M Goodwin. A growth cycle. 1967.
- [18] Gary D Hansen and Edward C Prescott. Capacity constraints, asymmetries, and the business cycle. *Review of Economic Dynamics*, 8(4):850–865, 2005.
- [19] Andreas Hornstein. Monopolistic competition, increasing returns to scale, and the importance of productivity shocks. *Journal of Monetary Economics*, 31(3):299–316, 1993.
- [20] Marc Lavoie. The origins and evolution of the debate on wage-led and profit-led regimes. *European Journal of Economics and Economic Policies: Intervention*, 14(2):200–221, 2017.
- [21] Alfred James Lotka. *Elements of physical biology*. Williams & Wilkins, 1925.
- [22] Jose-Victor Rios-Rull and Raül Santaaulalia-Llopis. Redistributive shocks and productivity shocks. *Journal of Monetary Economics*, 57(8):931–948, 2010.
- [23] Enchuan Shao and Pedro Silos. Accounting for the cyclical dynamics of income shares. *Economic Inquiry*, 52(2):778–795, 2014.
- [24] Christopher A Sims, James H Stock, and Mark W Watson. Inference in linear time series models with some unit roots. *Econometrica: Journal of the Econometric Society*, pages 113–144, 1990.
- [25] Vito Volterra. Leçons sur la théorie mathématique de la lutte pour la vie. *Bull. Amer. Math. Soc*, 42:304–305, 1936.
- [26] Andrew T Young. Labor’s share fluctuations, biased technical change, and the business cycle. *Review of economic dynamics*, 7(4):916–931, 2004.

# Appendices

A

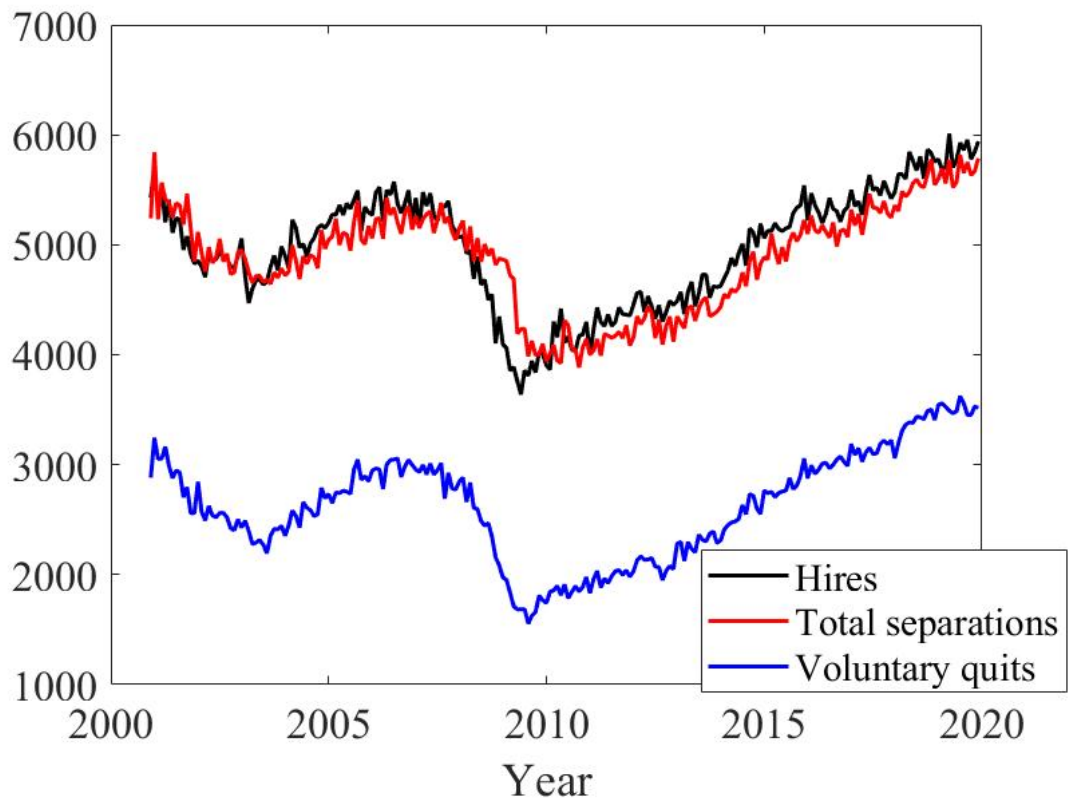


Figure 9: Labor turnover over the business cycle