



Munich Personal RePEc Archive

**Is the risk taking of HIV-infection
influenced by income uncertainty? :
Empirical Evidence from Sub-Saharan
Africa**

Djemaï, Elodie

Toulouse School of Economics- ARQADE

2008

Online at <https://mpra.ub.uni-muenchen.de/11731/>
MPRA Paper No. 11731, posted 24 Nov 2008 00:28 UTC

Risk Taking of HIV-Infection and Income Uncertainty: Empirical Evidence from Sub-Saharan Africa*

Elodie DJEMAI

Toulouse School of Economics - ARQADE

November 23, 2008

Abstract

This paper questions the positive relationship between HIV prevalence and income in Sub-Saharan Africa. In this paper, we hypothesize that a greater economic instability would reduce the incentives to engage in self-protective behaviors inducing people to increasingly take the risk of HIV-infection and hence causing a rise in HIV prevalence. We provide a simple model to stress on the effects of an increase in income risk in the incentives for protection. We test the prediction using a panel of Sub-Saharan African countries over the period 1980-2001. It is shown that the epidemic is widespread in countries that experience a great macroeconomic instability over the whole period. When introducing income instability, wealth is devoid of predictive power and the puzzle of the positive relationship between income and prevalence in Africa is lifted. Additional finding states that the risk taking of HIV-infection increases when the individuals are facing frequent and large crop shocks.

1 Introduction

The HIV/AIDS epidemic exhibits complex patterns because worldwide, the epidemic hits mostly the poorest countries while within Sub-Saharan Africa, the epidemic affects mainly the richest ones. 0.8% of the global adult population was living with HIV/AIDS in 2001 (UNAIDS 2007). This average prevalence was not reached in the two richest regions since in Western and Central Europe and in North America, 0.2% and 0.6% of the adult population were HIV-infected respectively. But the levels of prevalence in Sub-Saharan Africa clearly exceed

*Special thanks to Jean-Paul Azam. I am grateful to Hippolyte d'Albis, Zié Ballo, Pierre Dubois, Juan Miguel Gallego, Céline Nauges, Franck Portier and participants at the Second Riccardo Faini Doctoral Conference on Development Economics for valuable comments.

the global estimate since there, the average prevalence reached 9.44% in 2001. Concerning the flow of new infections, one estimates that in 2004, over the 4.9 millions of new contaminations, more than 95% occur in low and middle-income countries (UNAIDS 2004). By contrast, a close look at the spread of the epidemic within Sub-Saharan Africa reveals that the richest regions are the most hit by the epidemic. Indeed, in 2001, Southern Africa was the most affected region with 23.5% of the adult people living with HIV/AIDS, followed by Central Africa with 7.20%, East Africa with 5.11% and lastly West Africa with 4.30% of its adult population infected.

A series of studies documents the sensitivity of the HIV/AIDS epidemic to income at both macroeconomic and microeconomic levels. In Sub-Saharan Africa, macroeconomic evidence claims that the national HIV prevalence levels increase with wealth (Bloom, Mahal and Sevilla 2001; Clark and Vencatachellum 2003; Lachaud 2007). In a couple of African countries, empirical works suggest that rich individuals are more likely to be HIV-infected or to engage in risky sexual behaviors than their counterparts (Kazianga 2004; de Walque 2006; Lachaud 2007). Traditional literature related with the investment in health suggests that the investment increases with the income level while in the particular case of the HIV/AIDS epidemic in Africa, things go on the opposite direction. People adopt risky attitudes that reduce their human capital as their income increases. In Sub-Saharan Africa, the relation between epidemic and income is puzzling. Clark and Vencatachellum (2003) propose to solve this apparently counter-intuitive relation for the industrialized countries within Sub-Saharan Africa.

By contrast, this paper introduces the economic uncertainty to complete the puzzle. In Africa, the widespread instability and the lack of protection against the occurrence of exogenous risks and against their negative consequences might influence the individual choice and attitudes toward the risk of infection, and namely, might reduce the value people grant to the risk of infection. Here we focus on the risky sexual behaviors but any investment in health and human capital might be influenced by the widespread instability of the revenues. It is worth thinking of some recent cases in which people lost all they owned from day to day as in the conflict outbreak in Côte d'Ivoire and in Darfour or as in the wave of expropriation undertaken in Zimbabwe. Without referring to such extreme cases, agriculture is the dominant economic activity in most African countries. Once a farmer planted his crop, he is waiting for harvest and is able to anticipate how good the harvest will be in the following months. If he experiences a drought, a damaging rainfall variation or even a locust invasion, he knows that his harvest will be bad and the prospects to sell it on the market or to stock it in his granary are thin. In such a context where the priority is to

satisfy the primary needs, an individual who usually opts for safe sex may engage in unsafe sex one day either ex-post or ex-ante a risk on his own income. More broadly, living in a country of high economic instability does not encourage the agent to adopt safe sexual behaviors because it is not sure that in the future, he will be in good living conditions. A similar disincentive mechanism operates for the employee who has to exert much effort to get promoted in the sense that if the exogenous probability that his firm will go bankrupt in the following period is high, he has no incentive to exert any effort. In the context of the HIV/AIDS epidemic, the reasoning is the same, why should people engage in safer sexual practices to be sure to live longer and healthy when they are not sure that they will live in good conditions? Anticipating exciting future prospects will on the contrary encourage them to invest in self-protection. The bottom line of the paper is to argue that individuals must face so many risks in their everyday life that actually they do not care to take one additional and deliberated risk. We argue that whether the economic shock is anticipated or contemporaneous to the decision, the bottom line is maintained.

In this vein, we question the positive relationship between HIV prevalence and income in Sub-Saharan Africa and test the incidence of the aggregate economic risks faced by the individuals on their choice between safe and unsafe sex and hence on the spread of the epidemic. These interactions have not yet been explored in the literature and provide a potential explanation for the low incentives to opt for safer behaviors in Sub-Saharan Africa. We propose a simple model of individual choice under the HIV/AIDS epidemic to gain insights about the mechanisms at stake. The prediction derived from the model is that for a given average income, an increase in the income risk reduces the incentives to choose self-protection. Empirical findings validate this prediction. Using a panel data of Sub-Saharan African countries over the last two decades, results suggest that the volatility in gross domestic product influences the spread of the HIV/AIDS epidemic. The more unstable the economies, the highest are the levels of prevalence. We uncover that the instability of GDP per capita has distinguishable effects according to the income group. Extracting the cyclical component of the GDP shows that taken alone the income may lead to a spurious relation between income and prevalence in the sense that it includes both the trend and the fluctuations. When introducing the measure of GDP instability, GDP is devoid of its predictive power and the puzzle is lifted. The effect of crop shocks on the spread of the epidemic is analyzed as an extension and confirms the benchmark results.

The paper is organized as follows. Section 2 presents the background of the problem and develops a model of individual choice between safe and unsafe sex to highlight how income uncertainty alters the incentives to invest in

self-protection. This theoretical framework aims to shed some light on the microeconomic foundations that are behind our empirical investigations. Section 3 presents the indicator of economic instability and discusses the econometric issues. The extend of economic instability in Sub-Saharan Africa will be discussed and related to HIV prevalence. Section 4 provides and comments the empirical results. It is shown how the puzzle of the positive relation between income and HIV prevalence is lifted and how the instability in national revenue influences the spread of the epidemic. Some robustness checks are also proposed in this section to rule out the possibility that other mechanisms drive the significant and positive relation between income risk and the spread of the epidemic. Lastly, the framework is applied to crop shocks that are found to enhance the HIV prevalence. Section 5 concludes.

2 Background and Economic Rationale

2.1 Background

A branch of the literature on the HIV/AIDS epidemic explores the relation between the level of the epidemic and wealth. Focusing on 60 developing countries, Bonnel (2000) finds a positive but not statistically significant relation between HIV prevalence and the growth in GDP per capita. Alvarez, Li and Zanakakis (2007) provide evidence on the socio-economic determinants of the epidemic in 151 countries and show that the number of adults 15/49 living with HIV/AIDS and the number of AIDS-related death for adults and children are both positively related to the gross national product.

In Sub-Saharan Africa, macroeconomic evidence claims that the national HIV prevalence levels increase with wealth (Bloom et al 2001; Clark and Venkatachellum 2003; Lachaud 2007). At the regional level, Lachaud (2007) finds that the disparities across regions within a country like Burkina Faso are linked to the living standards and demonstrates that the level of regional prevalence increases with wealth whatever the proxy used. To corroborate macroeconomic findings, microeconomic evidence suggests that in a couple of African countries, rich individuals are more likely to be HIV-infected than their counterparts. Lachaud (2007) provides a detailed study of the determinants of HIV-infection in Burkina Faso. Using the Demographic and Health Survey made in 2003, he shows that the probability of being HIV-infected increases with non monetary welfare. Proposing an index of physical assets and decomposing the households by wealth levels into three groups, it appears that the probability of infection is higher for the individuals whose household belongs to the intermediate group and even higher for those belonging to the richest 20th percentile compared to the poor. In addition, the predicted HIV prevalence varies from 1.2% to 2.9%

for the very poor and the rich respectively. Distinguishing men and women, de Walque (2006) does not confirm the positive relation found in the case of Burkina Faso but he validates this pattern in Cameroon for both males and females and in Ghana, Kenya and Tanzania where the rich women are more likely to be infected than the poor ones.

One would wonder whether this positive relationship between wealth and prevalence is counter-intuitive. At least, two opposite effects of wealth are at play at the individual level. On one hand, it is documented that in Sub-Saharan Africa, beyond the transactions with commercial sex workers, money and gifts are driving most extramarital or casual sex. Accordingly, it is straightforward that a poor man can not afford having as many girlfriends as a rich man. A rich man seems more vulnerable due to his potentially extended sexual network. The role of transfers is all the more crucial that Luke (2006) points out a negative relationship between transfers and condom use in informal relationships in urban Kenya. Kazianga (2004) demonstrates that the demand for casual sex increases with wealth for urban men in Burkina Faso and rural men in Guinea and Mali. On the other hand, even if rich agents have an extended sexual network, they have always the choice between safe and unsafe sex and they could use condoms with their multiple partners. Their relative wealth confers them the ability to buy condoms and to negotiate its use.

Clark and Vencatachellum (2003) solve theoretically this apparently counter-intuitive positive relationship in a two-period model in which the utility of the agents in the second period is a function of their wage which directly depends on the productivity of their colleagues. There the expected share of the population opting for unprotected sex determines the choice between safe and unsafe sex because this share has an impact on one's earnings tomorrow through the fall in productivity due to infection. Anticipating that most colleagues adopt risky sexual practices in the first period and will be HIV-infected in the second one reduces the incentives to take care individually. Their approach rationalizes the risk taking in the industrialized countries in Sub-Saharan Africa. The approach proposed in this paper to solve the puzzle is more general than in Clark and Vencatachellum (2003) in the sense that it applies to any African countries whatever the predominant productive sector of their economy.

2.2 A model of choice between safe and unsafe sex: the setting

The whole sexually active population is normalized to 1. Nature makes the first move, such that before the decision making, some people are already HIV-infected due to their historical sexual behaviors that are not modeled here. The

initial level of prevalence in the country is equal to $1 - \rho$. Likewise, the population is composed of $1 - \rho$ infected agents and ρ susceptible agents, assuming that they are aware of their status. The serostatus conditions the behaviors of the individuals when choosing between safe and unsafe sex because infected and susceptible agents do not share the same incentives for protection, and because without possibility of recovering, they do not have the same utility functions. This baseline setting focuses on the sexual behavior of the susceptible group because it constitutes the very population at risk of infection and assumes that all infected individuals are opting for unsafe sex ¹.

In the first period, the susceptibles choose between engaging in a protected or unprotected sexual intercourse. Those opting for unsafe sex take the risk of becoming infected in the second period while those opting for condom use will remain susceptible for sure. The risk of infection is characterized as follows. A susceptible gets infected if he or she encounters a HIV-infected partner and if the virus is transmitted. The agent is assumed to choose his or her sexual partner randomly such that the probability of having an infected partner is equal to the proportion of people living with HIV². This assumption on the random choice of partner is determinant in the sense that the risk of infection is higher if the agent chooses his partner exclusively among commercial sex workers or lower if the agent is a young man who has sex only with girls from his age cohort. We also assume perfect matching in the sense that people opting for unsafe sex match all together. During a unprotected sexual intercourse, the transmission rate is β . Likewise, when having a unsafe sexual intercourse, the probability of becoming infected is $(1 - \rho)\beta$ and the probability of remaining susceptible is $1 - (1 - \rho)\beta$. As in Geoffard and Philipson (1996), we assume that the newly infected agents are still alive in the next period. We assume no discount factor.

Concerning the payoffs, we propose a state dependent utility approach in which the utilities the agents get depend directly on their own status. The agents derive utility from the consumption of their income, w . Two cases are explored. First, we analyze the incentives to engage in risky behavior when the level of income is certain in the second period. Second, we introduce income uncertainty to characterize the condition under which the agent starts engaging in self-protective behaviors. As developed in the introduction, the bottom line

¹This assumption simplifies our calculations and does not diminish the insights to be drawn from the results. Relaxing this assumption leads to more risk taking because with a proportion of infected agents engaging in safe sex, the probability of encountering an infected partner through exposure and hence the probability of contracting AIDS fall. A negative feedback of altruism among infected agents would emerge.

²Formally, the probability of encountering an infected partner is equal to the share of HIV-infected agents among the people engaged in unsafe sex. The latter encompasses the infected agents and the proportion of susceptible agents who are risk takers. Likewise this probability is endogenous and depends on the expected share of risk takers among healthy agents. However, we argue that the number of agents engaging in unsafe sex whatever their serostatus is approximated by 1.

is that in Sub-Saharan Africa, the instability in the living conditions and hence, the uncertainty about the future state of the world might reduce the incentives to invest in protection against the risk of HIV-infection. This intuition will be confirmed by the theoretical framework and later by the empirical analysis.

2.3 Case 1: Decision without uncertainty on future income

The agent gets a utility denoted $u(w)$ when susceptible and $v(w) = \alpha u(w)$ when in bad health, where $0 \leq \alpha < 1$, as in Viscusi and Evans (1990). $u(\cdot)$ is assumed to be continuous, increasing and concave. This formulation of the utility function in bad health is grounded on the reality and captures the negative effects of contracting HIV on everyday life. Note that the risk takers derive an extra-utility from unprotected sex denoted by Δ . This instantaneous benefit from unsafe sex is a standard assumption in the literature on individual choice in the presence of HIV/AIDS (Geoffard and Philipson 1996; Clark and Vencatachellum 2003). Accordingly, choosing protection p brings the agent $EU_{s,p} = u(w)$ and choosing exposure e $EU_{s,e} = \Delta + (1 - \rho) \beta v(w) + [1 - (1 - \rho) \beta] u(w)$.

The susceptible is maximizing his expected utility, such that the decision rule is the following. The susceptible individual

- uses condoms if $EU_{s,p} \geq EU_{s,e}$;
- engages in unsafe sex if $EU_{s,p} < EU_{s,e}$.

Lemma 1: *When all HIV-infected agents are assumed to have unprotected sexual intercourse, the susceptible individual:*

1. *prefers safe sex if the following condition holds:*

$$\beta(1 - \rho)(1 - \alpha)u(w) - \Delta \geq 0 \tag{1}$$

2. *takes the risk of becoming HIV-infected otherwise.*

Proof. The expressions get in proposition 1 are derived from the decision rule described above by substituting for $EU_{s,p}$ and $EU_{s,e}$. ■

This condition means that the individual is willing to adopt risky sexual behaviors if the net benefit from unsafe sex exceeds the net expected utility of self-protective behavior. As in Geoffard and Philipson (1996) and Philipson (2000), the individual remains exposed as long as the current benefit from unprotected sex outweighs the expected loss in the future utility due to infection. However unlike their model, the key element here is the distribution of future

income instead of the reservation prevalence levels, as developed in the next subsection.

From condition (1), every individual with a utility level higher than the threshold $\frac{\Delta}{\beta(1-\rho)(1-\alpha)}$ (denoted Ω hereafter) engages in safe sex while those with a lower utility opt for unsafe sex. This cutting value is determinant and is a function of the instantaneous benefit from unsafe sex, the loss in utility due to infection and the probability of getting infected. Deriving Ω indicates that a decrease in the utility loss, in the HIV prevalence or in the transmission rate leads to an increase in the threshold that induces more risk taking.

Concerning the loss in utility due to infection, note that our results do not promote the coverage of the antiretroviral therapy or the sensitization campaigns whose messages would underestimate the negative effects of infection on well-being. From our modelling, one additional key result is that reducing the probability of HIV transmission is not efficient to prevent people from taking the risk of infection. Indeed, as having an uncured sexually transmitted infection (STI) increases the probability of getting HIV-infected from having unsafe sex with an infected partner, one way to reduce the transmission rate β could be to subsidize the STI treatment. Although Oster (2005) shows that if Sub-Saharan Africa exhibited a prevalence to STIs equal to that of USA, the HIV prevalence would be very low, here we found that reducing β through the treatment of STIs boosts the risk taking. Curing STIs is not sufficient. The very issue is to provide more incentives to use condom to prevent from contracting any STIs including HIV.

The other parameters Δ and $(1 - \rho)$ influence the choice between protection and exposure. Likewise, if the instantaneous benefit increases, people will get more incentives to engage in unsafe sex and more people will take the risk of HIV-infection. As in Philipson and Posner (1993) and Geoffard and Philipson (1996), we found that an increase in the HIV prevalence will increase the fear of being contaminated and will induce people to start adopting self-protective measures. This result will be confirmed in the empirical investigation since we find that when the epidemic has become generalized in the country since a long period of time, the growth in prevalence is diminishing.

In the case where the level of income is certain in the second period, deriving condition (1) with respect to the average income, we found that $\beta(1 - \rho)(1 - \alpha)u'(w) \geq 0$ given that the utility function $u(\cdot)$ is increasing. An increase in income shifts the condition upwards.

Proposition 1: *Assuming an increasing utility function, an increase in the average income leads to a rise in self-protective behaviors.*

We found out that an increase in income leads to more protection. However this theoretical prediction is not confirmed by the empirical literature on the HIV/AIDS epidemic in Sub-Saharan Africa where the relation between HIV/AIDS and income is shown to be positive. A puzzle emerges. We aim to disentangle this puzzle by introducing a risk on income. Contrary to Eeckhoudt, Godfroid and Marchand (1998), we introduce aversion toward the income risk in the decision about self-protection arguing that in Sub-Saharan Africa, most individuals are vulnerable to variation in income and to macroeconomic instability. Indeed, if the economic activity is morose and leads to layoffs, the agents do not receive any unemployment benefit. In the same way, in case of bad harvest, the African countries do not develop any insurance system as the Common Agricultural Policy in Europe that insures the agents against bad climatic conditions and provides them substituting income if needed.

2.4 Case 2: Decision under income uncertainty

In the second case, the income is no more known for sure, but it is a random variable denoted \tilde{w} that follows a given cumulative distribution function F on a support $[\underline{w}; \bar{w}]$.

Introducing income uncertainty, the expected utilities get in the second period are reformulated. The expected utility of income is denoted $EU(\tilde{w})$. When the agent uses a condom, he gets $EU_{s,p} = EU(\tilde{w})$ and faces only the exogenous risk on income. On the contrary, when he opts for risky sex, he faces both the risk of infection and the exogenous risk, and hence he gets $EU_{s,e} = \Delta + (1 - \rho) \beta EV(\tilde{w}) + [1 - (1 - \rho) \beta] EU(\tilde{w})$, where $EV(\tilde{w}) = \alpha EU(\tilde{w})$.

Applying the same decision rule as above leads to Lemma 2.

Lemma 2: *Under income uncertainty, when all HIV-infected agents are assumed to have unprotected sexual intercourse, the susceptible individual :*

1. *prefers safe sex if the following condition holds:*

$$\beta(1 - \rho)(1 - \alpha)EU(\tilde{w}) - \Delta \geq 0 \tag{2}$$

2. *takes the risk of becoming HIV-infected otherwise.*

Certainty vs. Uncertainty To compare the incentives for self-protection with and without income uncertainty, assume that $E(\tilde{w}) = w$. It follows that $u[E(\tilde{w})] = u(w)$. From the Jensen's inequality, whatever the random variable \tilde{w} , if $u(\cdot)$ is concave, $EU(\tilde{w}) < u[E(\tilde{w})]$. This inequality means that a risk averse

agent never prefers a random variable to its mean. Since Lemma 1 states that the susceptibles are risk takers if $u(w) < \frac{\Delta}{\beta(1-\rho)(1-\alpha)}$ and since $EU(\tilde{w}) < u(w)$, we obtain that $EU(\tilde{w}) < u(w) < \frac{\Delta}{\beta(1-\rho)(1-\alpha)}$. It suggests that there is more risk taking under income uncertainty because it is more likely that the expected utility is below the threshold.

Increased Uncertainty Of more interest in the present context is the effect of increased uncertainty surrounding income on the risk taking of HIV-infection. To analyze this effect, we examine the consequence of a mean-preserving spread of the distribution of income of the type proposed in Rothschild and Stiglitz (1970). A mean preserving spread on the random variable \tilde{w} has the following effect on condition (2) $\beta(1-\rho)(1-\alpha)EU''(\tilde{w})$. This effect is negative given that the utility function is concave. A rise in income risk shifts downwards the condition.

Proposition 2: *For a given average income, an increase in the income risk reduces the incentives to choose protection. In other words, the higher the income uncertainty, the higher is the risk taking of HIV-infection and hence the more rapid is the spread of HIV in the country.*

Consider the illustrative case of two countries that have a similar average national income, $E(\tilde{w}_1) = E(\tilde{w}_2)$, but different levels of economic uncertainty such that the income is riskier in country 2 than in country 1 (i.e. $\tilde{w}_2 = \tilde{w}_1 + \tilde{x}$ with \tilde{x} having zero mean and a positive variance). Our model predicts that with the same values of the parameters, there would be more risk taking and hence a higher prevalence in country 2 than in country 1. Proposition 2 shows that controlling for income, the incentives for investing in self-protection decrease with income volatility. Note that the income risk is independent of the income level in the model and hence, to test this proposition empirically, our measure of income instability should be independent of the income level.

Note that we keep this model as simple as possible in order to stress on how income risk may influence the incentives to invest in self-protective behaviors. There is room for extending the model by introducing heterogeneity, particularly in terms of infection costs. Infection costs are likely to vary from one country to another especially due to heterogeneous access to health care facilities. In such a case, only the threshold will change and the prediction will be maintained. In the empirical work, such a heterogeneity will be taken into account through the rate of urban population in the sense that the agents living in urban areas are likely to have a better access to health care than their rural counterparts. Other control variables could have been the number of physicians per 1,000 inhabitants, the percentage of GDP devoted to the health sector but these alternatives are

ruled out due to data availability and multicollinearity issues since the relation of interest here is between national income and HIV prevalence.

2.5 Illustration

Using data, a direct illustration of Proposition 2 consists in comparing the distribution of the gross domestic product per capita and the spread of the epidemic for countries with a similar average revenue. Take Gambia and Burundi. Their average income over the period 1980-2001 is about 895 dollars, but the distribution of their GDP is different. For Gambia, the distribution is concentrated around the mean value while in Burundi the variance is much higher as depicted in Fig 1. At the same time, the epidemic in the two countries follow distinct patterns. In Gambia, the spread of the epidemic is slow, the average prevalence over the period 1980-2001 is 1.12% while its peak reached 2.27% of the adult population infected in 2000. On the other hand, the epidemic is widespread in Burundi with a prevalence level of 7.47% on average over the last two decades and with a peak reaching 10.25% in 1992. According to Proposition 2, if both countries have similar transmission rate, similar disutility from protection and similar cost of infection, the higher income risk in Burundi explains why the propagation of the epidemic was faster in Burundi than in Gambia.

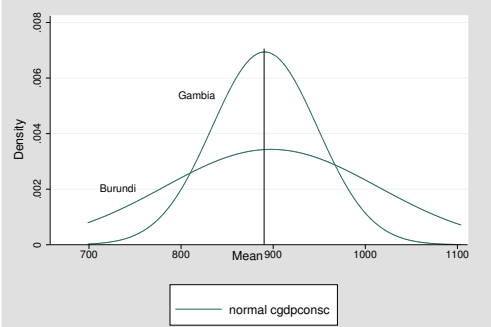


Figure 1: Distribution in GDP p.c.

Fig. A and B, in the Appendix, depict the distributions of the GDP per capita for a couple of African countries. Comparing Congo and Guinea leads to a similar illustration of Proposition 2 in the sense that Congo has a riskier income and a more widespread epidemic than in Guinea. Similarly, Mozambique and Nigeria have an equivalent constant GDP per capita but their distributions of GDP per capita suggest that Mozambique is a much more volatile country in terms of national revenues than is Nigeria. This stylized fact must be related with the state of the epidemic. In Mozambique, the proportion of HIV-infected individuals among the adult population is twice as big as in Nigeria. In 2001, the prevalence reached 13% in Mozambique and 5.8% in Nigeria.

This brief overview supports the mechanisms outlined in the section. To properly test our prediction, we have collected data to constitute a panel of 43 countries³ over the period from 1980 to 2001. The countries are all the countries in Sub-Saharan Africa except for the small countries for which HIV prevalence is not reported by UNAIDS.

3 Dataset and Econometric Issues

3.1 Measurement of macroeconomic instability

Testing Proposition 2 requires to find out an appropriate measure of income uncertainty in order to test whether it is a significant predictor of HIV prevalence controlling for income. We choose the Real Business Cycle methodology to estimate the macroeconomic instability of the African economies and more precisely, we apply the Hodrick Prescott filter to extract the cyclical component of the Gross Domestic Product per capita. Hodrick and Prescott (1981) allows to generate the non linear trend of the series. This trend stands for a weighted average of the past, current and future values of the series and the difference between the actual value of the variable and the trend is the cyclical component. This measure of the cyclical component is a good indicator of the annual shocks for several reasons. First, it is detrended in the sense that it is independent of the mean of the series under consideration. For each country, the mean of the cyclical component over the period is null. Second, taking into account the historical and the future values of the series it avoids the drawback of the standard coefficient of variation that considers only two periods and often leads to spurious growth rate.

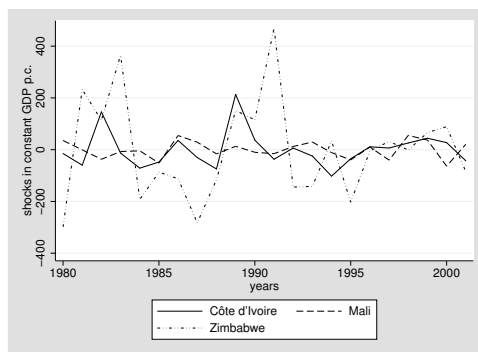


Figure 2: Cyclical Component in GDP p.c.

Fig. 2 displays the annual fluctuations in per capita GDP for Côte d'Ivoire, Mali and Zimbabwe. It illustrates the phenomenon for countries where the

³Due to missing values especially in the set of control variables, most of our estimations include 39 or 40 countries.

HIV/AIDS epidemic exhibits different patterns. Two noteworthy differences are Mali and Zimbabwe. While Mali has one of the slowest HIV propagation in Africa, Zimbabwe is hard-hit by the epidemic with a prevalence reaching 33.7% of the adult population in 2001. As far as their respective economic instability, the graph clearly shows that in Zimbabwe the fluctuations in GDP per capita are greater and much more frequent than in Mali. Over the period 1980-2001, Zimbabwe experienced frequent negative shocks of large magnitude. Côte d'Ivoire illustrates an intermediate situation concerning both HIV dynamics and income volatility.

As in Hodrick and Prescott (1981), the standard deviation of the cyclical component is used as an index for the variability of the series X_{it} and we get the following variable:

$$stdshockX_i = \left[\frac{1}{22} \sum_{t=1}^{t=22} (X_{it} - HPtrend_{it})^2 \right]^{1/2} \quad (3)$$

The database covering 22 years, we benefit from a sufficiently long length of time to get a consistent measure of the macroeconomic instability for each country of the sample. The standard deviation of the annual deviations from the trend should be viewed as a characteristic of the national economic volatility over time. The standard deviation of the shocks in GDP for each country of the sample is summarized in Table 1a. A first look at the data suggests that the countries which exhibit the highest variances are also those with the highest levels of HIV prevalence. At the top of these variances in GDP, are Botswana, Namibia, Swaziland and Zimbabwe which are also the worst-affected countries. At the other extreme, Benin, Madagascar, Mali, Niger and Senegal exhibit slightly volatile GDP per capita, given that in Madagascar the epidemic is not yet generalized and that Senegal is known as a success story in preventing the epidemic from spreading (Putzel 2006).

3.2 Econometric Model

We aim to figure out whether the agents incorporate the income instability in their decision making about investing in self-protection. Since we have national data rather than individual data, we test whether countries with highly unstable economy exhibit higher levels of HIV prevalence than those with stable economy and we study whether decomposing the income series keeps positive and significant the relation between wealth and HIV prevalence. Formally, we test whether the growth in prevalence is increasing with economic instability.

The rate of HIV prevalence is predicted using UNAIDS data despite the con-

troversty saying that their prevalence levels are overestimated compared to the levels found in the Demographic and Health Surveys for two reasons. First, the panel dimension of UNAIDS data brings more information and more variability than do any cross sections and it enables us to control for individual unobserved heterogeneity. Second, even if the overestimation was true, the prevalence levels would be overestimated in the same way for each country of our sample so that the comparability across countries and across time prevails even after adjustment.

The existing macroeconometric evidence on the positive relationship between the HIV/AIDS epidemic and wealth are confined in a static framework, certainly due to the nature of the data. Alvarez et al (2007) and Lachaud (2007) estimate their empirical models using cross sections of 45 regions in Burkina Faso and 151 countries respectively.

We estimate the HIV prevalence through a dynamic specification for two reasons. First, since the level of prevalence at date t is a function of the stock of HIV-infected agents who were contaminated before date t (i.e. the prevalence in $t - 1$) and of the flow of newly contaminated agents, it is straightforward to describe the prevalence as a state dependent phenomenon. Second, the prevalence rate reflects an aggregation of the individual behaviors in the extent to which the higher the growth in HIV prevalence in a given year, the more numerous are the agents who have undertaken risky sexual behaviors during that year since UNAIDS provides the rate of prevalence at the end of the year. The economic models on the rational epidemic of HIV/AIDS show that the agents decide on whether to protect taking into account the probability of becoming infected from a unprotected sexual intercourse and this probability depends directly on the previous level of prevalence.

Note that a close look at the evolution of the epidemic over time suggests nonlinearities in the prevalence. Indeed, the epidemic goes on increasing in most countries in Sub-Saharan Africa over the first fifteen years of the epidemic and after reaching a peak of HIV prevalence, the rate of growth diminishes. To incorporate this nonlinearity, the standard dynamic model will be adapted by including the lag of HIV prevalence both in levels and in squares in the right-hand side of the equation.

3.3 Estimation strategy

The standard dynamic model is written:

$$y_{it} = \alpha_i + \rho y_{it-1} + X'_{it}\beta + \gamma t + \varepsilon_{it}, \forall i, \forall t \quad (4)$$

where y_{it} is the dependent variable, y_{it-1} its lag, X_{it} the set of covariates, α_i the individual-specific effect, t the time trend and ε_{it} the disturbances. We choose the System-Generalized Method of Moments specification to estimate (4) because the dynamic panel bias makes the estimation by Ordinary Least Squares inefficient. The dynamic panel bias results from the correlation between the fixed effect and the lagged dependent variable. Hence we need to eliminate the α_i s. There are two alternatives depending on the transformation made on the equation: Difference-GMM or System-GMM. Taking the first differences of equation (4), we obtain:

$$\Delta y_{it} = \rho \Delta y_{it-1} + \Delta X'_{it} \beta + \gamma \Delta t + \Delta \varepsilon_{it}, \forall i, \forall t \quad (5)$$

where $\Delta y_{it} = y_{it} - y_{it-1}$. In equation (5), the correlation between Δy_{it-1} and $\Delta \varepsilon_{it}$ requires the use of instrumental variables. In a panel data setting, the time series dimension offers the lagged values of the regressors as potential candidates for the instruments. Anderson and Hsiao (1982) propose to use Δy_{it-2} or y_{it-2} as instruments for Δy_{it-1} and to estimate the model by the instrumental variable method. Later, regarding the low efficiency of the Anderson Hsiao estimates, Arellano and Bond (1992) propose to estimate the model by the Generalized Method of Moments rather than the IV technique, to extend the set of instrumental variables to the entire past values and took into account the heteroskedasticity and autocorrelations of the perturbations. This technique is called the difference-GMM. The limitations of this approach are substantial. One limitation is the loss of information due to the first differentiation of the equation. Another is that the first differenced GMM estimator suffers from downward bias and low precision, especially when the value of the autoregressive coefficient ρ increases toward unity (Blundell and Bond 1998).

The alternative approach consists in using both the equations in levels and in first differences in a system of equations. The advantages of the system-GMM encompass the increase in precision and sample size, the ability of identifying the time-invariant regressors, and that it behaves better than the difference GMM for models where the autoregressive coefficient is high (Blundell, Bond and Windmeijer 2000; Roodman 2006).

To adapt the standard dynamic model to our particular case, we introduce the lag of HIV prevalence both in levels and in squares in the right-hand side as follows.

$$HIV_{it} = \alpha_i + \rho_0 HIV_{it-1} + \rho_1 HIV_{it-1}^2 + \beta_0 I_{it} + \beta_1 IR_{it} + C'_{it} \beta_2 + \gamma t + \varepsilon_{it} \quad (6)$$

where HIV_{it} is the HIV prevalence, HIV_{it-1} its lag, I_{it} the income variable,

IR_{it} the measure of income risk, C_{it} the set of control variables, α_i the country specific effect, t the time effect and ε_{it} the disturbances.

Concerning the outcome variable, the System-GMM estimates the prevalence rate in first differences that stands for the change in prevalence from one year to another. Specifying the econometric model in a dynamic framework allows us to predict the gross incidence rate by controlling for the lagged prevalence and the estimated deaths due to AIDS. It does not deal with the net incidence rate because we do not observe the HIV-infected agents who leave the stock for other causes of mortality. A direct application of the system-GMM specification to our econometric model requires the use of instruments for both the lag of HIV prevalence and its squared value to correct for the correlation with the error term.

The set of control variables includes the urbanization rate, the literacy rate, religious indexes, ethnolinguistic fractionalization index, the number of years since the epidemic became generalized and a rate of mortality due to AIDS (see table 1b for data definition and sources). The role of the covariates is to determine, for any given level of past prevalence, what induces a massive risk taking and hence, a more or less rapid propagation of HIV in the population.

3.4 Some Tests

First-of-all, before estimating the econometric model, panel unit root tests are applied to avoid spurious regressions related to the presence of non stationary variables in the left- or right-hand side of the equation. To examine the stationarity properties of the time-varying variables, we apply Levin, Lin and Chu (2002) and Im, Pesaran and Shin (2003) panel unit root tests. More details on these procedures and the results of the tests are displayed in Table 1c in the appendix. When a variable is found to be integrated of order 1 and 2, we introduce it respectively in first and second differences in the estimations.

In a system-GMM specification, consistent estimates require valid instruments and homoskedastic and uncorrelated errors. We check for the validity of the instruments through the Hansen test of overidentifying restrictions. Hansen test is used to ensure the absence of correlation between the instruments and the disturbances of the model (Sevestre 2002). We correct for possible heteroskedasticity in the error terms and test for the autocorrelation of order 1 and 2 in the errors in first differences through the Arellano-Bond test.

Given the literature on the effects of the epidemic on the growth of the African countries, we are particularly cautious with the potential endogeneity

bias. Accordingly, we check for the endogeneity of the variable GDP through the Hausman test. Formally each econometric model is estimated twice. One estimation considers GDP per capita as exogenous and the other one as endogenous and both estimations are compared in the test to know which one is consistent. When the Hausman test is rejected, we use instruments to overcome the simultaneity between income and HIV prevalence as suggested in Sevestre (2002).

Lastly, to ensure that the shocks in GDP per capita and in yields are exogenous, we check whether these shocks Granger cause the HIV prevalence. Table 1d displays the results from the tests. Results suggest that the rate of prevalence does not Granger cause the contemporaneous shocks in yields and in GDP. This rules out the possibility that the spread of AIDS are driving the large macroeconomic fluctuations that one country may experience. Concerning the gross domestic product, it helps in predicting the prevalence while the prevalence does not provide information to predict GDP per capita. In addition, when regressing the cyclical components on the prevalence and the estimated death rate due to AIDS, these regressors does not appear statistically significant.

4 Empirical Evidence

4.1 Naive estimations: HIV prevalence and GDP

The objective of this subsection is to check whether our database provides a positive relationship between income and the HIV/AIDS epidemic in Africa, as found in previous works. The naive estimation consists in excluding the measure of GDP volatility from the econometric model and in testing whether a growth in income per capita is associated with a growth in prevalence.

Since the variable gross domestic product per capita was found to be integrated of order 1, we can not introduce it in levels but in first differences. Formally, we do not study the effect of the level of income but rather the effect of the growth in GDP or the level of enrichment of the country on HIV prevalence. Starting with the GDP per capita in first differences, it is found that an increase in the gross domestic product per capita leads to a rise in the prevalence rate given the previous state of the epidemic (see columns 1 and 2 in Table 2). The more prosperous the country becomes, the more affected it is by the HIV/AIDS epidemic.

As a robustness check, the next step consists in verifying whether the relation still holds when using measures of wealth in level. Since the GDP per capita is not stationary, proxies are required (see columns 3-5 in Table 2). The effect of the level of GDP at the beginning of the period and that of the mean of

the GDP per capita over 1980-2001 are estimated. Whatever the proxy used, it is found out that richer countries exhibit a higher growth in prevalence. It was worth making use of these proxies to ensure that the relation is robust, but for the rest of the empirical work, the variable GDP per capita, even in first differences, is favored because dealing with panel data, this time varying variable provides more information about the countries' standards of living.

Our database confirms previous findings and the following two subsections are devoted to the empirical test of Proposition 2. Note that a particular attention is paid to the effect of the revenue on prevalence. To overcome the puzzle detailed in sections 1 and 2, we should find that introducing the cyclical component of GDP in standard deviation makes the positive relation between wealth and prevalence disappear.

4.2 Prevalence, GDP and GDP instability: A test of our prediction

Our prediction is supported by the data when introducing the standard deviations of the cyclical component of the GDP per capita. Table 3 displays the benchmark estimation results from estimating equation (6). The estimations suggest that the volatility in per capita GDP influences the dynamics of the HIV/AIDS epidemic in Sub-Saharan Africa. More volatile economies have larger growth in HIV prevalence with other characteristics held constant. As highlighted by the theoretical model proposed in Section 2, the microeconomic foundations behind this macroeconometric result is that people living in countries that are historically volatile and prone to great and frequent fluctuations in national income have less incentives to take care of their health status and to invest in self-protection. In fact, whether they are infected or not, the individuals are not convinced that their living conditions will be improved in the future, on the contrary, the likelihood of frequent variations in their living standards is dramatically high. We found that everything held constant, on average, one standard deviation increase in the income instability leads to an increase in prevalence of 0.2% per year or equivalently, of 4.4% at the end of the period.

Extracting the deviations from the trend shows that the variance plays a role in explaining the growth in prevalence and that the GDP per capita is not a good predictor for prevalence anymore. It is worth decomposing the series so as to state that the average level of income is not sufficient and taken alone may lead to spurious and counter-intuitive results since it encompasses both the trend and the fluctuation of the series.

To go deeper in analyzing the relationship between macroeconomic volatility and HIV prevalence, we investigate whether the effect depends on the income level. The objective is to figure out whether rich countries are more vulnerable

to economic shocks or in other words, whether people living in rich countries are more likely to engage in risky behaviors when facing fluctuating income than do people in poorer countries. We classify our observations by income group such that the low-income group encompasses countries from the first quantile of per capita GDP, the middle-income group countries from the second quantile and the high-income group countries from the highest quantile. To test for heterogeneous effects, we interact the three dummy variables with income volatility in the baseline dynamic model.

Applying a Wald test to know whether the coefficients are jointly equal to zero suggests that the effect of macroeconomic instability on prevalence is statistically significant (see column 4 of Table 3). As found above, the pooled effect of income risk is statistically different from zero, meaning that macroeconomic instability has a broad impact on the path of the epidemic. A second Wald test is applied in order to test whether the coefficients associated with each income group are equal, the result is that the impact of economic instability on the HIV prevalence varies by income group. The impact is not significant for low- and middle-income countries while it is positive and statistically significant for the high-income group. Richer countries are found to be more sensitive to macroeconomic uncertainty than their counterparts. These results provide a possible explanation for the fact that in Sub-Saharan Africa, rich countries are the most severely hit by the HIV/AIDS epidemic. It is suggested that the individuals in rich countries are more vulnerable to fluctuations in revenue. One might argue that instability turns out to have a significant effect on the prevalence in rich countries because fluctuations are potentially larger there than in low- and middle-income countries. But, we used Hodrick Prescott filter to get fluctuations that are detrended to avoid this possibility. The non linear trend reflects the evolution of the income series over time for each country and the fluctuations are the deviations from this trend. Moreover the standard deviation of the fluctuations encapsulates both their frequency and their size and there is no reason why rich countries should exhibit more frequent fluctuations than their counterparts.

In rich countries, one standard deviation increase in income risk leads to a rise of prevalence of 0.16% per year on average and with other explanatory variables held constant. In this estimation, GDP per capita is devoid of its predictive power and the puzzle is lifted as expected. In brief, this analysis by income group shows that the widespread levels of infection in rich African countries are probably due to their vulnerability to economic instability rather than to their level of economic development as such.

4.3 Robustness checks

We proceed to some robustness checks to see whether the coefficient of the volatility in GDP remains stable and significant after introducing additional regressors in the benchmark equation. The objective is to rule out the possibility that other mechanisms drive the significant and positive relation between income risk and the spread of the epidemic.

The first three columns of Table 4 test whether the coefficient on the volatility in GDP remains stable and significant when controlling for openness. The idea behind this inclusion of openness relies on two literatures and aims to eliminate the possibility that openness acts as a third variable which could be at the origin of both the expansion of the epidemic and income volatility. Indeed, on one hand, Oster (2008) suggests that the levels of exports are positively driving the HIV incidence in Africa due to its resulting rise in mobility and on the other hand, trade openness is known to induce external risk. Openness is likely to enhance national macroeconomic instability and at the same time, is likely to rise the prevalence such that the positive relationship between volatility and HIV may appear only due to the omission of the variable openness. We test this possibility with three measures of openness. Columns 1 and 2 estimate the contemporaneous effects of openness on prevalence by introducing openness in current terms and openness in constant terms in first differences since the latter turns out to be a process integrated of order 1. The effect of the average degree of openness over the period 1980-2001 is estimated in column 3 of Table 4. Our estimation results claim that the relation between HIV prevalence and income instability is not a spurious relation that would have emerged from the omission of the variable openness. Whatever the measure of openness included in the regression, the association between the spread of the epidemic and GDP volatility is still positive and significant and GDP per capita is still devoid of its predictive power. Contemporaneous degree of openness does not influence the HIV prevalence but the average degree does.

Column 4 checks for the possibility that experiencing armed conflict increases income volatility that in turn boosts the spread of the HIV/AIDS epidemic. We introduce a dummy for armed conflict as control variable because a country prone to armed conflicts is likely to be much more volatile than a peaceful country. The variable is equal to 1 if the country is experiencing an armed conflict in the given period of time and 0 otherwise. We do not distinguish according to the duration of the conflict. What matters is that the country is currently in conflict leading to two consequences. On one hand, the conflict might make the economy of the country sluggish, leading to a fall in the income level and a rise in the income volatility. On the other hand, the bleak prospects due to being in conflict might induce people to engage more likely in risky sexual

behaviors. If this scenario was validated by the data, we would get that income instability is not significant anymore and that the likelihood of experiencing an armed conflict is positively and significantly associated to HIV prevalence. Actually, this scenario is not validated by the data. Conflicts are not driving the relation of interest between income risk and the epidemic. Income risk is still a good predictor of HIV prevalence and armed conflict appear negatively related to the spread of the epidemic in the country. Possible explanations for this negative contemporaneous association between conflict and prevalence are that the conflict kills especially the agents who were already infected (military and agents who engage in the battle because their infection makes them have less to lose) and that the conflict reduces the mobility and the possibility to have unsafe sex.

We argued that the macroeconomic volatility influences the spread of the epidemic through a fall in the incentives to engage in self-protection. Another channel through which the positive association between prevalence and macroeconomic volatility might have occurred is through the aid flows. Accordingly, more stable countries are likely to receive a higher amount of aid flows compared to unstable countries and these aid flows might be targeted or used by the local government to fight the epidemic. If such a scenario prevails, then stable economies are less affected by the epidemic thanks to the aid received and the unstable nations are more affected by AIDS not due to the income risk as such but due to its induced lack of resources. To rule out this possibility, we introduce the contemporaneous amount of official development as control variable. Column 5 and 6 in Table 4 show that the instability in GDP p.c. remains significantly and positively related to HIV prevalence even after introducing the total aid flows and the aid flows per capita respectively. Note that aid flows are found to be exogenous in our specifications, the amount of aid is not allocated in response to the HIV/AIDS epidemic. Including mean values instead of contemporaneous values leads to the same conclusions⁴.

As a general comment on the robustness checks, note that the regression coefficients for the variable of interest are quite similar across specifications 1-6 since one standard deviation increase in income risk induces an annual rise of the prevalence ranging from 0.162 to 0.22% on average, with other characteristics held constant.

4.4 Extension

The role of crop shocks is explored as an extension of the model to see whether the relation remains valid when another economic risk is considered. We investigated the role of instability in the gross domestic product to insert our

⁴Results are not reported here but are available from the author upon request.

contribution to the existing literature on national income and prevalence, but we may wonder whether the volatility in gross domestic product is the most appropriate proxy for the volatility in individual wealth. GDP is an indicator of standards of living and gives some information about the potential public investment. However in most African countries, the majority of the population is working on the fields while agriculture is not productive and hence, stands for a thin part of the GDP. For instance, in Zambia, on average 75% of the population is working in agriculture while the share of the agricultural sector in GDP is only 19%. The remaining 81% come from other sources and their profits do not benefit directly to the wide majority of the population. Farmers have access to these resources only through public spending if they are used to finance social programs but do not constitute individual wealth as such. This example is representative of the situation in most countries within Sub-Saharan Africa. In this context, investigating the role of the volatility in agricultural yields provides some additional insights into the relationship between economic instability and the spread of the epidemic. The volatility in agricultural yields over the previous two decades is proxied by the standard deviation of its cyclical component (see Table 1a).

Table 5 repeats the benchmark regressions replacing the volatility in GDP by the volatility in yields as the independent variable of interest. The evidence shows a positive association between the variance of the fluctuations in yields and the prevalence. Countries in which the yields are highly volatile are much more affected by the epidemic than their counterparts. High and frequent crop shocks discourage people to invest in self-protective behaviors all the more than in most countries, the vast majority of the population is working in the agricultural sector, have no outside option to avoid crop shocks and whose livelihoods are directly affected by these fluctuations in yields. GDP per capita is still significantly and positively related to the prevalence. Contrary to previous estimations, the effects of GDP per capita is not offset by the effects of the economic volatility because here the volatility in yields is used instead of its own volatility. However in Column 3, the standardized regression coefficient for volatility in yields exceeds that for the income level meaning that a standard deviation-change in yields instability has a greater impact on prevalence than a standard deviation-change in GDP. An increase in one standard deviation in yields instability and in GDP lead to a rise of 0.22% and 0.07% of the prevalence respectively. To get the same change in prevalence as the change resulting from a one-standard deviation change in yields instability, the GDP per capita must increase by three standard deviations.

Column 4 in Table 5 studies the heterogeneous effects of the volatility in yields according to the income group. The coefficient on volatility in yields

is not identical for the three income groups, as confirmed by the Wald test of joint significance. The relationship between volatility in agricultural yields and the spread of the epidemic exists for both the middle- and high-income groups. These results suggest that the middle- and rich-income countries are more vulnerable to crop shocks in the sense that their population reacts more by engaging in risky behaviors when experiencing frequent fluctuations in agricultural yields than do the agents living in low-income countries. The effect of the income volatility is even higher in rich-income group than in middle-income group. These findings confirm the prediction that controlling for income, the higher the instability in crop revenues, the steeper is the growth in prevalence. As in the pooled regression, the proxy for income turns out to be significant and positive. However, income has a smaller impact on the path of the epidemic than the instability in yields since the standardized regression coefficients for GDP, instability in yields for middle-income countries and for high-income countries are respectively 0.0082, 0.0138, 0.0369.

4.5 Some remarks on the control variables

The Dynamics of the Epidemic HIV prevalence is found as an increasing and concave function of the past prevalence level.

To control for the flow of people leaving the prevalence rate, we collect the number of reported AIDS cases by year provided by UNAIDS and WHO (2004). Given that once the individuals develop AIDS, their remaining lifetime is about one year, the number of death due to AIDS is approximated by the lag of the number of AIDS declared. We divide it to the whole adult population to have a rate of AIDS mortality over 1,000 adult people as any standard death rate. However, AIDS death does not appear statistically significant in predicting prevalence.

Since the epidemic is said to be generalized as soon as the rate of national HIV prevalence exceeds 1 (UNAIDS 2006), we capture the persistence of the epidemic in one country by including a variable equal to the number of years since the epidemic became generalized. The estimations suggest that the more persistent the epidemic in the country, the slower is the growth in prevalence. Two interpretations of this result are proposed. First, this finding validates one of our theoretical predictions stating that the risk taking of HIV-infection is negatively related to the proportion of infected agents in the population. Here we found that the duration of the epidemic influences its growth as if people fear to become infected as the epidemic is spreading. Second, a complementary interpretation is that the longer the period of time since the epidemic became generalized, the more informed people are. Once generalized, the existence of AIDS is hardly denied since it takes part of everyday life for most inhabitants

who necessarily know someone who was or is infected. If the epidemic is generalized during a long period of time, collective information induces safer practices that in turn, slower its growth.

Literacy and urban population The interplay between the literacy rate and the prevalence is found to be statistically significant and negative. The spread of the HIV/AIDS epidemic is slower in countries where the literacy rate is high, suggesting that sensitization campaigns are more efficient when addressed to educated people as shown in de Walque (2007). One additional interpretation is that educated people hold potentially good jobs and have more to lose if they become infected. In that sense, they are willing to invest more in self-protection.

In some estimations, the rate of urban population appears to influence negatively the spread of the epidemic. The lower the rate of urbanization, the steeper is the growth in HIV prevalence. As noted in the theoretical section, the rate of urbanization could be considered as a proxy for the access to health care facilities. A higher urbanization induces a lower cost of self-protection given that living in urban areas offers a larger access to sensitization campaigns and a wider condom availability.

Ethnicity, religion and prevalence For the ethnic diversity of the country, we refer to the ethnolinguistic fractionalization index from Roeder (2001) that takes values from 0 to 1, 1 standing for the most fractionalized country since this index reflects the probability that two randomly selected individuals belong to two different ethnic groups. Our estimations show that a high ethnolinguistic fractionalization index is associated with a reduced propagation of the epidemic. A high ELF index might reduce the likelihood for the agents to have a large and extended sexual network, if the latter is bound by the ethnic belonging. Accordingly, a high ELF index would lead to a decrease in the number of sexual partners or in the size of each sexual network and then to a fall in the propagation of the virus from one sexual network to another.

Related to this result, we get that religion takes a part in explaining HIV prevalence at least in some of the specifications. By dividing the countries into three groups according to their level of Christianity, the estimations suggest that the countries where over half of the population is evangelized but where church members are less than 60% of the population have a higher probability of exhibiting a widespread epidemic than do more evangelized countries. The second result is that countries at the bottom of this religion scale and those that are very evangelized are not statistically different in terms of HIV propagation. The intermediate countries are more affected by the HIV/AIDS epidemic than

the more evangelized countries (and more affected than the less evangelized countries if we change the reference category).

5 Conclusion

To our knowledge, this analysis is the first attempt to link the incentives to adopt risky sexual behaviors through the spread of the HIV/AIDS epidemic with the economic instability. To establish this link, we built a simple theoretical model and tested it using a panel of African countries.

The present study reaches three conclusions. First, the average level of income is insufficient in predicting prevalence in the region. When introducing measure of instability in GDP, wealth is devoid of predictive power and the puzzle of the positive relationship between income and prevalence in Africa is lifted. Second, our findings suggest that the instability in gross domestic product per capita and in yields influence the spread of the epidemic. More volatile economies reach higher levels of HIV prevalence. Third, the interactions between macroeconomic instability and prevalence were investigated by income group and it is shown that rich countries are more vulnerable to economic shocks than their counterparts. In rich countries, volatility has a greater impact on the path of the epidemic. This suggests that the high prevalence in the rich African countries is due to their economic instability, instead of the level of economic development as such.

We think that the impact of income instability on the incentives for self-protection is the major and most appropriate channel through which instability affects the HIV prevalence. The argument behind is that experiencing frequent and large fluctuations in national income and in yields reduces the opportunity cost of infection, makes people consider the risk of HIV-infection as a minor risk and hence leads to a rise in the incentives to adopt risky sexual behaviors. In the paper, alternative channels (trade openness, conflict and aid flows) are explored and are rejected by the data.

The limitations of this study are mainly due to the dataset. We used macroeconomic data while microeconomic data would have been more appealing to directly predict the individual behaviors toward the risk of infection. Nevertheless as far as we know, no database mixing sexual behaviors and time series of revenue is available. In a macroeconomic setting, we are not able to control for a wide range of variables because of multicollinearity issues.

The paper is based on the central hypothesis that nowadays, HIV-infection is a matter of choice and incentives. Of course, not all African people have perfect knowledge about the risk of HIV-contamination, about how to use condom

properly and some individuals, particularly women, have no power to negotiate on sexuality issues. However previous studies show that even well-informed agents are engaging deliberately in risky sexual attitudes. As a policy implication, the conclusions of the paper promote the protection of the agents against income shocks as a way to enhance their incentives to invest in self-protection and take care of their health status in Sub-Saharan Africa.

In this paper, we examined the particular case of individual decision about self-protection against AIDS but the bottom line may apply to other investments in health care. In particular, it is possible to derive and test the same framework for individual's or household's decision to use mosquito nets, to filter water or to opt for vaccination in Africa. In these cases also, the agents do not massively opt for self-protection even though the cost of self-protection is low and the agents are informed about the health risks.

References

- [1] Alvarez, Cecilia, Vivian Li, and Stelios. H. Zanakis. 2007. "Socio-Economic Determinants of HIV/AIDS Pandemic and National Efficiencies." *European Journal of Operational Research* 176: 1811-38.
- [2] Anderson, T.W., and Cheng Hsiao. 1982. "Formulation and Estimation of Dynamic Models Using Panel Data." *Journal of Econometrics* 18: 47-82.
- [3] Arellano, Manuel, and Stephen Bond. 1991. "Some Tests of Specification for Panel Data: Monte Carlo Evidence and an Application to Employment Equations." *Review of Economic Studies* 58 (2): 277-97.
- [4] Bloom, David E., Ajay Mahal, Jaypee Sevilla, and River Path Associates. 2001. "AIDS and Economics.", Paper prepared for Working Group 1 of the WHO Commission on Macroeconomics and Health 2001.
- [5] Blundell, Richard, and Stephen Bond. 1998. "Initial Conditions and Moment Restrictions in Dynamic Panel Data Models." *Journal of Econometrics* 87: 115-43.
- [6] Blundell, Richard, Stephen Bond and Frank Windmeijer. 2000. "Estimation in Dynamic Panel Data Models: Improving on the Performance of the Standard GMM Estimator." In *Nonstationary Panels, Panel Cointegration and Dynamic Panels, Advances in Econometrics*, ed. Baltagi B.H., (15): 53-91.
- [7] Bonnel, René. 2000. "Economic Analysis of HIV/AIDS." ADF 2000 Background Paper, World Bank.
- [8] Centre for Study of Civil War. "Armed Conflicts 1946-2003." Uppsala University. <http://www.prio.no/CSCW/Datasets/Armed-Conflict/>.
- [9] Clark, C. Robert, and Désiré Vencatachellum. 2003. "Economic Development and HIV/AIDS Prevalence." Scientific Series CIRANO.
- [10] de Walque, Damien. 2006. "Who gets AIDS and how? The Determinants of HIV Infection and Sexual Behaviors in Burkina Faso, Cameroon, Ghana, Kenya and Tanzania." Policy Research Working Paper 3844, Washington, DC, World Bank.
- [11] de Walque, Damien. 2007. "How Does the Impact of an HIV/AIDS Information Campaign Vary with Educational Attainment? Evidence from Rural Uganda." *Journal of Development Economics* 84: 686-714.
- [12] Eeckhoudt, Louis, Philippe Godfroid, and Maurice Marchand. 1998. "Risque de Santé, Médecine Préventive et Médecine Curative." *Revue d'Economie Politique* 108 (3): 321-37.

- [13] Geoffard, Pierre-Yves, and Tomas Philipson. 1996. "Rational Epidemics and Their Public Control." *International Economic Review* 37 (3): 603-624.
- [14] Heston, Alan, Robert Summers, and Bettina Aten. 2006. *Penn World Table Version 6.2*. Center for International Comparisons of Production, Income and Prices at the University of Pennsylvania. September 2006.
- [15] Hodrick, Robert J., and Edward C. Prescott. 1981. "Post-War U.S. Business Cycles: An Empirical Investigation." Northwestern University, Center for Mathematical Studies in Economics and Management Science, Discussion Papers 451.
- [16] Im, Kyung S., M.Hashem Pesaran, and Yongcheol Shin .2003. "Testing for Unit Roots in Heterogeneous Panels." *Journal of Econometrics* 115: 53-74.
- [17] Kazianga, Harounan .2004. "HIV/AIDS Prevalence and the Demand for Safe Sexual Behavior: Evidence from West Africa.", Unpublished, Columbia University.
- [18] Lachaud, Jean-Pierre .2007. "HIV prevalence and poverty in Africa: Micro- and macro-econometric evidences applied to Burkina Faso." *Journal of Health Economics* 26: 483-504.
- [19] Levin, Andrew, Chien-Fu Lin, and Chia-Shang J. Chu .2002. "Unit Root Test in Panel Data: Asymptotics and Finite Sample Properties." *Journal of Econometrics* 108: 1-24.
- [20] Luke, Nancy .2006. "Exchange and Condom Use in Informal Sexual Relationships in Urban Kenya." *Economic Development and Cultural Change* 54 (March): 319-348.
- [21] Oster, Emily. 2005. "Sexually Transmitted Infections, Sexual Behavior and the HIV/AIDS Epidemic." *Quarterly Journal of Economics* 120 (2): 467-515.
- [22] Oster, Emily .2008. "Routes of Infection: Exports and HIV Incidence in Sub-Saharan Africa.", Working Paper, Department of Economics, University of Chicago.
- [23] Philipson, Tomas .2000. "Economic Epidemiology and Infectious Diseases." In *Handbook of Health Economics*, ed. Culyer A.J., Newhouse J.P., vol 1. North Holland, Amsterdam: 1762-99.
- [24] Philipson, Tomas, and R.A. Posner .1993. *Private Choices and Public Health: The AIDS Epidemic in an Economic Perspective*, Harvard University Press.

- [25] Putzel, James. 2006. "Histoire d'une Action d'Etat: La Lutte Contre le Sida en Ouganda et au Sénégal." In *L'Epidémie du Sida en Afrique Sub-saharienne: Regards Historiens*, ed. Philippe Denis and Charles Becker. Editions Karthala: 245-70.
- [26] Roeder, Philip G. 2001 *Ethnolinguistic Fractionalization (ELF) Indices, 1961 and 1985*. (February 16).
- [27] Roodman, David. 2006. "How to Do xtabond2: An Introduction to 'difference' and 'System' GMM using Stata." Working Paper 103, Center for Global Development.
- [28] Rothschild, Michael, and Joseph E. Stiglitz .1970. "Increasing Risk: 1. A Definition." *Journal of Economic Theory* 2: 225-43.
- [29] Sevestre, Patrick. 2002. *Econométrie des Données de Panel*, Dunod.
- [30] UNAIDS. 2004. "Report on the Global AIDS Epidemic 2004".
- [31] UNAIDS. 2006. "Report on the Global AIDS Epidemic 2006": 8-50.
- [32] UNAIDS. 2007. "AIDS Epidemic Update 2007".
- [33] UNAIDS, and WHO. 2004. "Epidemiological Factsheets on HIV/AIDS and Sexually Transmitted Infections, 2004 Update".
- [34] Viscusi, W. Kip, and Williams N. Evans. 1990. "Utility Functions that depend on Health Status: Estimates and Economic Implications." *The American Economic Review* 80(3): 353-74.

Figure A and B: Income distribution for a couple of comparison countries

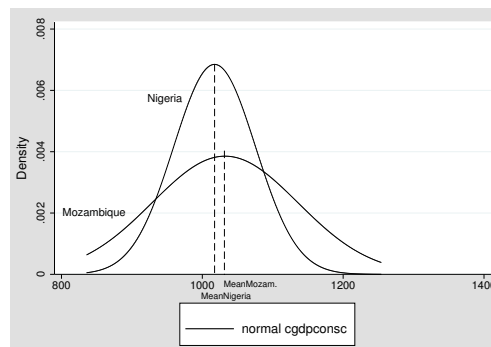
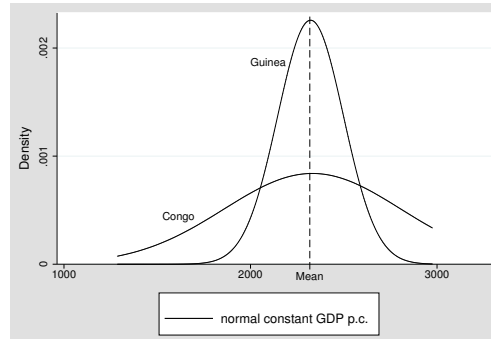


Table 1a: National measure of the instability in constant GDP per capita and in agricultural yields

Countries	StdshockGDP	Stdshockyields	Countries	StdshockGD	Stdshockyields
Angola	-	58.459	Liberia	67.746	53.342
Benin	22.325	48.044	Madagascar	17.744	40.898
Bostwana	170.993	43.807	Malawi	29.636	213.421
Burkinafaso	20.456	64.735	Mali	33.323	98.273
Burundi	40.973	40.199	Mauritania	30.201	75.738
Cameroon	83.228	87.021	Mozambique	51.812	75.474
Central Africa	33.932	75.681	Namibia	174.567	82.870
Chad	32.141	73.9216	Niger	37.579	47.577
Congo	199.016	64.675	Nigeria	29.880	100.507
Côte d'Ivoire	71.190	74.381	Rwanda	79.871	104.219
RDC	43.497	11.797	Senegal	45.297	79.229
Djibouti	253.008	104.014	Sierraleone	41.220	65.857
Equ. Guinea	321.186	-	Somalia	44.184	-
Eritrea	27.573	212.697	South Africa	94.870	390.427
Ethiopia	24.630	99.006	Sudan	32.786	99.065
Gabon	315.335	91.558	Swaziland	133.303	276.695
Gambia	22.006	71.968	Togo	34.035	65.378
Ghana	36.035	81.816	Uganda	23.267	127.235
Guinea	46.949	37.291	Tanzania	38.900	125.639
Guinea Bissau	59.000	87.911	Zambia	39.097	312.449
Kenya	21.703	162.859	Zimbabwe	195.204	368.227
Lesotho	35.691	140.779			

Table 1b: Data definition and sources

Variable	Definition	Source
HIV	Percentage of the adult population (15/49 years old) who are currently living with HIV/AIDS	UNAIDS
AIDS cases	Declared cases of AIDS	UNAIDS, WHO
Experience	Number of years since the epidemic is generalized	
yields	Cereal yields: kg per hectare of harvested land	WDI (2005)
cgdppc	Gross domestic Product per capita in purchasing power parity, in I\$ in 2000 Constant Prices (chain series)	Penn World Table, Version 6.2
urbanpop	Percentage of the population living in urban areas	WDI (2005)
literacy	Adult literacy rate	WDI (2005)
ELF	Ethnolinguistic fractionalization Index	Roeder (2001)
Christ1	Countries with less than 50% of evangelized people	World Christian Database
Christ2	Countries where over half of the population is evangelized but church members are less than 60%	Centre for the Study of Global Christianity, in Gordon Conwell
Christ3	Countries where church members represent at least 60% of the pop and with more than 95% of evangelized people	Theological Seminary
openness	Ratio of exports and imports over GDP, %	Penn World Table, Version 6.2
armed conflict	Dummy variable for armed conflict occurring in the country	Centre for Study of Civil War
aid	Official development assistance and official aid, current US\$	WDI (2005)
aidpc	Aid over the midyear population estimate, current US\$	WDI (2005)

Table 1c: Panel Unit root tests

Levin, Lin and Chu (2002) and Im, Pesaran and Shin (2003) panel unit root tests are based on the equation $\Delta y_{it} = \alpha_i + \rho_i y_{it-1} + \gamma_i t + \varepsilon_{it}, \forall i, \forall t$ where $\Delta y_{it} = y_{it} - y_{it-1}$, y_{it-1} is the lagged dependent variable, α_i the individual effect, t the time effect and ε_{it} the disturbances. The null hypothesis H_0 is the presence of unit root, i.e. $\rho_i = 0$. When the null is not rejected by the data in levels, we apply the test to the data in first differences. If, even in first differences, the process is not stationary, the test is done on the variable in second differences.

In Levin, Lin and Chu (2002), the autoregressive coefficient is homogeneous such that $\rho_i = \rho, \forall i$ while in Im, Pesaran and Shin (2003), the coefficient is allowed to vary across individuals.

We apply both tests in two specifications: one including individual effects but excluding time trend and the other including both time trend and individual effects. The conclusions are robust to the specifications. When we reject the null of unit root under the model with individual effects, we reject it also under the model with both time and individual effects. For the sake of clarity, the table below reports only the results from the specification assuming both effects.

Variables	Levels		First Differences		Second Differences	
	LLC	IPS	LLC	IPS	LLC	IPS
HIV	-32.39***	-24.88***				
yields	-4.95***	-4.43***				
cgdp p.c.	-1.05	0.65	-20.54***	-15.95***		
AIDS death	-0.49	1.48	-5.25***	-9.21***		
urbanpop	-1.83***	9.94	-0.63	1.30	-9.76***	-9.27***
literacy	0.46	8.51	2.38	0.85	-0.52	-5.07***
openness (current)	-2.08314**	-1.85729**				
openness (constant)	-0.00336	0.3052	-9.58159***	-9.44538***		
ODA	2.47	4.22	-5.46***	-7.03***		
ODA p.c.	2.33	4.006	-8.16***	-7.07***		

Note: *, ** and *** denote statistical significance at the 10%, 5% and 1% levels, respectively.

Table 1d: Pairwise Granger Causality tests

	F-Statistic	Probability	Obs
HIV does not Granger cause GDP p.c.	1.71492	0.18062	828
HIV does not Granger cause shock in GDP	0.26685	0.76586	828
HIV does not Granger cause shock in yields	0.40494	0.66716	793

Note: Lag length =2

Table 2: Naive Estimations, Income and HIV Prevalence

	(1)		(2)=(1)+covariates		(3)=(1) with meanGDP		(4)=(2) with meanGDP		(5)=(2) with GDP1980	
	β	(t-val)	β	(t-val)	β	(t-val)	β	(t-val)	β	(t-val)
L.hiv	1.1428***	(.036)	1.3343***	(.068)	1.1416***	(.032)	1.3547***	(.066)	1.3511***	(.068)
L.hivquared	-.0030***	(.001)	-.0080***	(.002)	-.0032***	(.0009)	-.0090***	(.002)	-.0087***	(.002)
S.cgdpc	.0007***	(.0002)	.0005**	(.0002)						
meancgdpc					.0001*	(.00008)	.0002***	(.00004)		
cgdp1980									.0001***	(.00004)
S2.urbanpop			-.0627	(.084)			-.1661**	(.077)	-.1102	(.089)
S2.literacy			-.0447**	(.022)			-.0450***	(.017)	-.0467***	(.018)
elf			-1.3106***	(.504)			-1.2421***	(.470)	-1.3700***	(.488)
christ1			-.3656	(.329)			.0468	(.370)	-.0831	(.363)
christ2			.2533	(.230)			.4197*	(.230)	.3937*	(.230)
experience			-.2016***	(.037)			-.1898***	(.036)	-.1970***	(.037)
S.AIDSdeath			.2088	(.177)			.1691	(.148)	.1782	(.162)
constant	-.6326**	(.263)	1.7346***	(.578)	-.8081***	(.311)	1.2565**	(.582)	1.4428**	(.592)
AR(1) test	2.10**		2.16**		2.70***		2.24**		2.26**	
AR(2) test	3.47***		2.95***		3.50***		2.92***		2.94***	
Hansen test	25.26		13.83		35.50		16.71		16.95	
observation	870		621		882		621		619	
Instrumented	L.hiv, L.hivsq		L.hiv, L.hivsq		L.hiv, L.hivsq		L.hiv, L.hivsq		L.hiv, L.hivsq	
Hausman test	chi2(23)=0.08		chi2(29)=3.10		chi2(22)=0.04		chi2(28)=10.98		chi2(28) =0.19	

Note: These equations are estimated through one-step system GMM, correcting for possible heteroskedasticity. Time effects are included.

*, ** and *** denote statistical significance at the 10%, 5% and 1% levels, respectively. The Hausman test tests for the exogeneity of GDP.

Table 3: Volatility in GDP p.c. and prevalence

	(1)		(2)=(1)+time trend		(3)=(2)+ covariates		(4)=(3) by income group	
	β	(t-value)	β	(t-value)	β	(t-value)	β	(t-value)
L.hiv	1.1044***	(.041)	1.1467***	(.035)	1.3404***	(.067)	1.3446***	(.060)
L.hivsquared	-.0026**	(.001)	-.0033***	(.001)	-.0084***	(.002)	-.0086***	(.002)
cgdpc	.0003	(.0002)	.0006***	(.0001)	.0003	(.0002)	4.175e-06	(.0002)
stdshockGDP	.0035*	(.002)	.0029**	(.001)	.0035***	(.001)		
stdshockGDPlow							-.0067	(.005)
stdshockGDPmiddle							-.0020	(.002)
stdshockGDPhigh							.0023**	(.001)
urbanpop					-.1333	(.091)	-.1755**	(.074)
literacy					-.0585***	(.023)	-.0441***	(.014)
elf					-1.1601**	(.503)	-1.1562***	(.399)
christ1					-.2032	(.333)	.0012	(.255)
christ2					.2708	(.216)	.3177*	(.182)
experience					-.2005***	(.038)	-.1874***	(.033)
AIDSdeath					.1335	(.183)	.1244	(.184)
constant	-.0248	.179	-.8193***	.300	1.5093***	(.571)	1.6054***	(.506)
AR(1) test	2.61***		2.27**		2.24**		2.26**	
AR(2) test	3.44***		3.50***		2.82***		3.05***	
Hansen test	30.97		29.23		18.31		3.93	
Observation	870		870		621		621	
Instrumented	L.hiv, L.hivsq		L.hiv, L.hivsq		L.hiv, L.hivsq		L.hiv, L.hivsq, S.cgdpc	
Hausman test	chi2(4)=3.98		chi2(24)=0.54		chi2(30) =0.12		chi2(30)=119.36***	
Wald test of jointly equal							chi2(2)=6.27**	
Wald test of jointly equal to 0							chi2(3)=13.45***	

Note: Same as in table 2

Table 4: Robustness Checks

	(1)		(2)		(3)	
	Openness, current		Openness, constant		Average Openness, constant	
	β	(t-value)	β	(t-value)	β	(t-value)
L.hiv	1.3427***	(.063)	1.3404***	(.067)	1.3426***	(.064)
L.hivquared	-.0086***	(.002)	-.0084***	(.002)	-.0085***	(.002)
cgdpc	.0003	(.0002)	.0004	(.0002)	.0002	(.0002)
stdshockGDP	.0028**	(.001)	.0035***	(.001)	.0027*	(.001)
openness	.0042	(.003)	.0003	(.002)	.0039*	(.002)
urbanpop	-.1520*	(.087)	-.1339	(.091)	-.1136	(.085)
literacy	-.0554**	(.022)	-.0587***	(.022)	-.0594***	(.023)
elf	-1.0930**	(.439)	-1.1599**	(.503)	-1.0865**	(.440)
christ1	-.1403	(.336)	-.2021	(.332)	-.2163	(.337)
christ2	.3246	(.229)	.2714	(.216)	.2718	(.225)
experience	-.1898***	(.036)	-.2004***	(.038)	-.1914***	(.035)
AIDSdeath	.0956	(.186)	.1343	(.183)	.1114	(.185)
constant	1.0686*	(.619)	1.5073***	(.571)	1.1449**	(.569)
AR(1) test	2.30**		2.24**		2.29**	
AR(2) test	2.85***		2.80***		2.86***	
Hansen test	17.80		13.86		18.45	
observation	621		621		621	
instrumented	L.hiv, L.hivsq		L.hiv, L.hivsq		L.hiv, L.hivsq	
Hausman test	chi2(30)=2.98		chi2(31)=8.34		chi2(31)=2.72	

Table 4: Robustness Checks (continued)

	4		5		6	
	Conflict		Total aid flows		Aid flows p.c.	
	β	(t-value)	β	(t-value)	β	(t-value)
L.hiv	1.3305***	(.066)	1.3376***	(.067)	1.3383***	(.067)
L.hivquared	-.0082***	(.002)	-.0083***	(.002)	-.0083***	(.002)
cgdpc	.0003	(.0002)	.0004	(.0002)	.0004	(.0002)
stdshockGDP	.0034***	(.001)	.0036***	(.001)	.0036***	(.001)
armed conflict	-.3230***	(.121)				
total aid flows			2.316e-10*	(1.192e-10)		
aid flows p.c.					-.0004	(.002)
urbanpop	-.1485*	(.086)	-.1481*	(.090)	-.1494*	(.089)
literacy	-.0552**	(.022)	-.0598***	(.023)	-.0595**	(.023)
elf	-1.1883**	(.479)	-1.1433**	(.502)	-1.1360**	(.500)
christ1	-.1649	(.339)	-.1722	(.337)	-.1752	(.338)
christ2	.2481	(.217)	.2603	(.221)	.2591	(.219)
experience	-.1946***	(.037)	-.1978***	(.038)	-.1981***	(.038)
AIDSdeath	.1335	(.172)	.1435	(.184)	.1367	(.184)
constant	1.6444***	(.578)	1.4848**	(.582)	1.4947**	(.581)
AR(1) test	1.97**		2.10**		2.19**	
AR(2) test	2.83***		2.79***		2.73***	
Hansen test	19.46		14.00		14.08	
observation	621		605		605	
instrumented	L.hiv, L.hivsq		L.hiv, L.hivsq		L.hiv, L.hivsq	
Hausman test	chi2(31)=19.57		chi2(29)=6.93		chi2(31)=1.55	

Note: same as in Table 2. Columns (1) and (2) include the degree of openness in current and constant terms respectively. Column (3) includes the average of openness in constant terms over the period.

Table 5: Volatility in yields and prevalence

	(1)		(2)=(1)+time trend		(3)=(2)+covariates		(4)=(3) by income gp	
	β	(t-value)	β	(t-value)	β	(t-value)	β	(t-value)
L.hiv	1.0891***	(.036)	1.1216***	(.035)	1.3171***	(.066)	1.3413***	(.063)
L.hivsquared	-.0023**	(.001)	-.0027***	(.0009)	-.0079***	(.002)	-.0086***	(.002)
cgdpc	.0002	(.0001)	.0005**	(.0002)	.0005**	(.0002)	.0004**	(.0002)
stdshockyields	.0030***	(.001)	.0027**	(.001)	.0025**	(.001)		
stdshockyieldslow							-.0014	(.001)
stdshockyieldsmiddle							.0016*	(.001)
stdshockyieldshigh							.0027**	(.001)
urbanpop					-.0458	(.070)	-.1332	(.089)
literacy					-.0358*	(.019)	-.0411**	(.018)
elf					-1.4038***	(.433)	-1.1080**	(.469)
christ1					-.1987	(.277)	-.1128	(.264)
christ2					.3504*	(.185)	.3282	(.202)
experience					-.1923***	(.036)	-.1916***	(.033)
AIDSdeath					.3080*	(.162)	.2269	(.156)
constant	-.0488	(.117)	-.8707***	(.247)	1.5345***	(.505)	1.4760***	(.469)
AR(1) test	2.65***		2.47**		2.05**		1.96**	
AR(2) test	3.32***		3.40***		2.98***		2.82***	
Hansen test	36.85		28.79		12.77		8.68	
observation	828		828		617		617	
instrumented	L.hiv, L.hivsq, S.cgdpc		L.hiv, L.hivsq		L.hiv, L.hivsq		L.hiv, L.hivsq	
Hausman test	chi2(4)=40.55***		chi2(24)=0.32		chi2(29)=8.38		chi2(31)=1.98	
Wald test of jointly equal							chi2(2)=17.61***	
Wald test of jointly equal to 0							chi2(3)=20.84***	

Note: same as in Table 2