



Munich Personal RePEc Archive

Dictatorial Psychopathological Commination in Server-side Public Mental Psychological Menace

Pachankis, Yang

Universal Life Church

14 September 2022

Online at <https://mpra.ub.uni-muenchen.de/124959/>
MPRA Paper No. 124959, posted 28 Jul 2025 13:11 UTC

Dictatorial Psychopathological Commination in Server-side Public Mental & Psychological Menace

Yang I. Pachankis^{1#}

¹ *Universal Life Church*

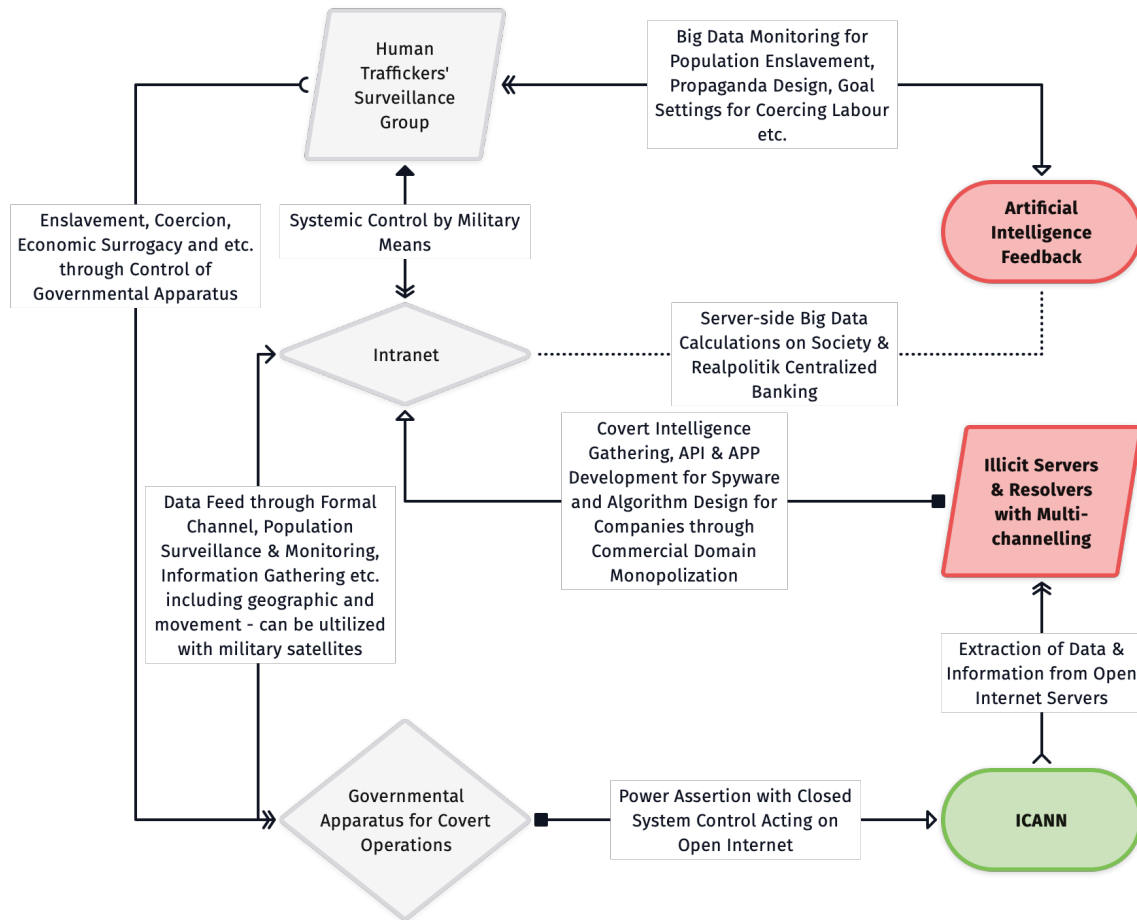
Corresponding author information:

Address: 2-28-4 Dexinyuan, 1001 Biqing N Rd, Chongqing, 402762, PRC

Email: yang.pachankis@gmail.com

ORCID: 0000-0002-5252-8670

Graphical abstract



Abstract

Background. Communist formation introduced Marxist's non-falsifiable anthropocentric theory for ideology and discourse. The form of communication sustaining torture has been noticed in the Chinese indoctrination both in education and mass communication. The research adopted scientific methods in observation to the Marxist structuralism with psychoanalysis of dominance in power-incentivized structuralism.

Aim. With the global authoritarian drawbacks and emergence of dictatorship in the structural realist powers, the psychopathology of modern & contemporary cyber-based informatics penetrations with nuclear threat semantics is impacting global mental & psychological health, and especially for the LGBTQIA⁺ individuals. The research aims to mitigate the harms that transgress the Geneva Conventions and against the spirit of Universal Declaration of Human Rights.

Methods. The research adopted a media analysis approach to the sexological elements in anthropological and sociological developments. It focuses on the derivatives of Oedipus Complex with relation to death wish that impact the LGBTQIA⁺ suicidal ideations in the structured cyber crimes, with a Gestalt psychoanalysis in informatics. The research conceived a somatic method in media psychology counteracting the media-based extension of gender & sexuality castes.

Results. The Bell curve of memory were retrieved on the fundamental hypothesis of LGBTQIA⁺ stigmatization with new combinations in power structure, cosmological, and anthropological consciousness re-combinations. The multilateral dictatorial semantic spread in the cyber-information domains through the monopolization of the Internet Corporation for Assigned

Names and Numbers (ICANN) was conceptualized as a structural source of dictatorial psychopathology epidemiology with artificial intelligence (AI). Military cyber psychological warfare spillover in the civil economy is recognized to be the source of global mental & psychological disparities, possibly the contributing factor for LGBTQIA+ suicidal ideation, and derogation of human security.

Keywords: Dominance, psychological warfare, somatic psychology, anthropological psychoanalysis, gender and power, cyber and informatics.

1. Introduction

Torture in the digital era has taken more subtle and sophisticated forms. Pérez-Sales (2022) enumerated the technological elements of torture with "relationship of domination in which one person breaks the will and impedes the self-determination of another human being, taking control of all aspects of the victims' life and trying to change the core elements of their identity to the perpetrator's interests". Communist regimes declare to adhere to Marxism with his base and superstructure theory, which summarizes the anthropological psychodynamics of nonviolence (Butler, 2020). The violence notion, however, was asserted in the original theory by Leninism (Spence, 1991). The Marxist theory of anthropological framework is phenomenological with its summarative superstructure theory, and puts aside individual human autonomy and developmental psychology from the non-falsifiable theory. When the ideological interest of power is to promote a nonfalsifiable theory, the torture loop of power relations forms.

The research question is further specialized into: 1) what sustains the beliefs of the torturers and the torturers' psychopathological stability? 2) In what forms torture exists in the communication between perpetrators and victims? (Pérez-Sales, 2021); 3) What prevents the victims from regaining autonomies from the harms, and how to facilitate recovery if torture exists on a mass scale? 4) How to ensure the psychologists' mental & psychological health in the torture environment? 5) How can psychological professionals differentiate victims from perpetrators in the psychological torture loops in a professional and healthy manner? The research and the series of research questions are beyond the lengths of a single article, and this particular piece assesses the scales of perpetration from the second question.

Due to the specific reverie process adopted in the research on the question, the target audience ideally would have some background in astronomy, engineering, and psychoanalysis. The consciousness loops in digital torture environment are not unbreakable if the contexts of threats are shifted (Pérez-Sales, 2021). The information flows in digital communication are dependent on satellite technologies, and the patterns of efficacy dependent on orbital designs (Pachankis, 2022h). Albeit influences may persist in dreams with eternal recurrence, technological salience in torture environment formation has not surpassed Nietzsche's sun spirit (Bollas, 1993). The transient consciousness Joseph (1987) proposed created a dichotomy between the reverie of the researcher and the research contents in the torture environment.

The purpose of the article is to develop social understandings in the power-incentivized structuralized torture environment. Pérez-Sales (2022) adopted an institutional rationale in categorization of the torturers' power positions, and Pachankis (2022k) further illustrated the technical engineering flowcharts behind the operations. From the form of communication, Jari (2022) put forth a descriptive definition with the organizational method of social engineering attack as a social engineering tool or a threat that causes a risk to cyber security. The definitive perceptions take cyber security and torture environment as two distinct realities, while the power positions of the perpetrators in organized behaviors add further layers and obscure the boundaries between purpose and actions.

The research takes a critical theory approach to the problems. It is based on a structuralism perspective to natural observations from the People's Republic of China (PRC)'s constitutional dictatorship. Strange (1997) defined structural power as "power over the way things are done and the beliefs sustaining the way things are done". On the latter, the research hypothesized a structural deterministic human behavioral tendency from mating rights competition and

privileges, with the cisgender heterosexual sets of desires, acceptable social emotions, and specific heterosexual-centered developmental interests in the structural movements. From *homo erectus* to *homo sapiens*, anthropological development of apparatus rationale is seen as characteristic of the mating rights competitions with mating privileges exemplified by the cave painting in *figure 1*. The biopolitical structuralism was deconstructed by cosmological consciousness in the research process, and the semiotic symbolifications communicated with cinematic arts (Butler, 2020 and Pachankis, 2022a). Psychoanalysis was mainly adopted for mental & psychological health defense of the researcher, and deviations explicated for social intermediations (Pachankis, 2022i). The postpositivist research noticed the structural continuity of the PRC in organized behaviors and psychoanalytic characteristics in the information systems and cyber domains, and readjusted the critical theory perspective (Pachankis, 2022k). Structuralism is recoordinates to orbital analysis in the information infrastructures, and informatics patterns are observed as a transient consciousness to cosmoconsciousness (Pachankis, 2022h and Joseph, 1987). The cosmoconsciousness detaches from the anthropocentric notion of Marxist structuralism and discourses in the ideological realm, and shapes the postmodern anatomic perspective to power-incentivized structuralism.



Figure 1. Lascaux cave painting depicting the biotemporal order of consciousness. Source: Unknown (12978 B.C.)

Neurodiversity is the empirical basis for cosmoconsciousness. Natural mutation and environmental determinants in genetic life forms are more explanatory to the objective epistemological scientific paradigm than subjective anthropocentrism (Meyer *et al.*, 2021 and Pachankis, 2023b). Anthropocentric discourses are more identifiable with the notion where Breznik (2004) summarized in cultural revisionism "primarily the field of ideological struggle", and the realpolitik interests "subsumed under the Cold War logic", as Hettne (1997) put, only differ in the 'benign' and 'malign' forms of neomercantilism. This positioned the aim of the research in structural analysis to neomercantilist purposes in the cyber realm. Cisgender heterosexual male death instinct in dominance culture is given special attention to, given its predominant mass psychological and cultural inertia in social psychological development.

Cisgender male façade of the researcher became the advantage in the research process by differentiating sexology from gender in the Oedipus constructs, where the psychological trait of "having sex with the father" is naturally deconstructive to cisgender heterosexual dominance governing the mass psychology of the existing structures (Pachankis, 2022i). The "circuit of de-personalization" in the dictatorial extension transference in the cyberspace was achieved by what Joseph (1987) stated as to "establish new connections, new combinations of unconscious content" and "new variations of older combinations that had never been conscious before" (Hall, 1976, Bollas, 1993, and Pachankis, 2022k).

2. Materials and Methods

The research adopted natural epistemology deconstructive to structuralist observations in order to detect the structural determinants. Modernism was adopted in the research action and procedures with a social theater approach, and postmodernism was adopted for the structural intersection explorations. The research was designed to detect the margins of the Communist Party of China (CPC)'s dictatorial power sphere to the democratic societies with the amplified military psychological warfare & nuclear threats from the PRC between 2015 and 2020. Two field trips in the United States of America (USA) were conducted in 2018 and 2019 with the Obama 10-year VISA, and the artificial intelligence (AI) empowered Chinese propaganda and realpolitik calculation system was noticed in the 2018 field trip, with its regional monopolization of Internet Corporation for Assigned Names and Numbers (ICANN) and "all-media strategy" penetration (Pachankis, 2022k & 2022j).

Interpretative approach is used to reconstruct the intersectional observations with the coexistence of structures and structural conjunctions amongst powers. The dictatorial AI sphere with all-media penetration was observed as vectorized sexological power transference in the topological server structures with gross privacy intrusions for data collection, and in the 2019 field trip, a cosmic correspondence consciousness was adopted in the American cyber in the general relativity (GR) framework for passing the consciousness beyond the scope of the structural conjunctions (Sugiura, 1996). The consciousness shift put off-guard the shielding on the digital social relational calculations, towards a neuronal reflection of cosmic cognition and informatics. The interpretive approach falls more into climate psychiatry and cognitive psychology. The interpretative approach in social theater pragmatism neutralizes power-structural incentivization in the social interactive environment with the dictatorial-constant dimension-added “Stanford prison”. Since the participation of the research is subjective-cognitive, it is advantaged in off-surveillance elements of secret-keeping in the interactions of the real-world variables. The gender appearances of the researcher also shaped the disguise in the subjectively biased realms of the structure in a male dominant normalcy. The subjective-cognitive design was informed by the 2018 findings that keyboard trafficking on personal devices with real-time text-mining and APP push generation has been present in the digital Orwellian surveillance schemes. The GR framework was designed accordingly for countertransference of the psychopathological pushes and telephone calls from differentiated landlines and mobile frequency bands.

Semantics were obscured due to the consciousness in informatic encryptions and prior notices of my graduate school mentor being removed from university for my communication with him on WeChat of democratization paths for PRC. Semantic changes also assisted with cross-cultural and cross-linguistic mental connections, and later adopted in search of white holes.

The growth mindset and consciousness approach in the researcher's own participation supported the social theater approach with Gestalt construct transformations. Between natural events and social events, the synchronization of satellite & cosmological perceptions in the informatic environment were achieved from the original paradigm seen in *figure 2*.

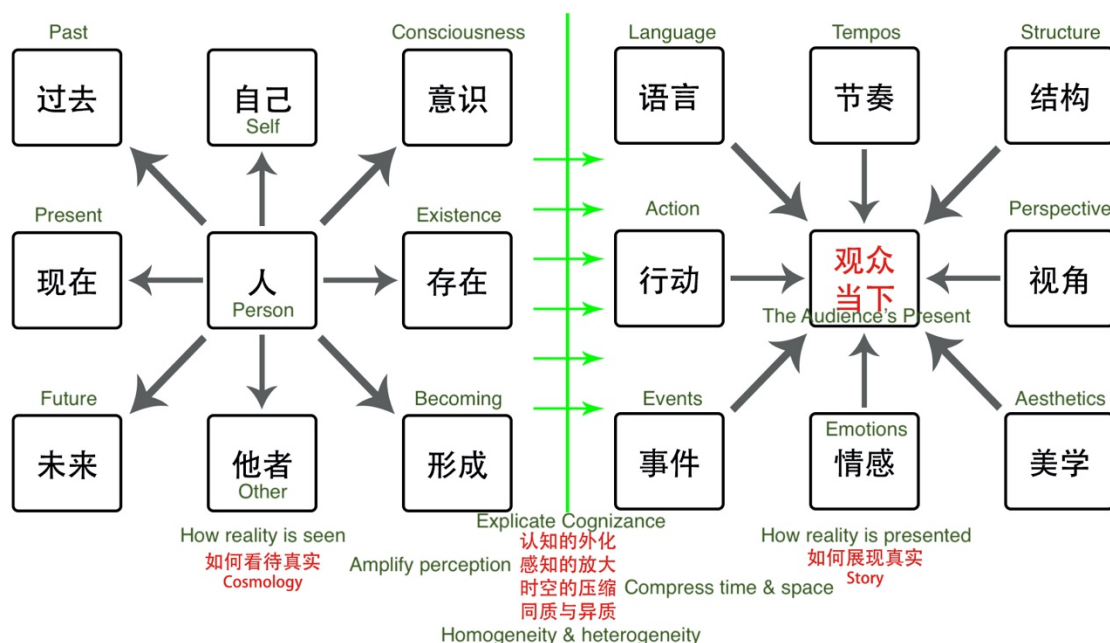


Figure 2. The cosmological relevance with cinematic arts in relation to the humanities.

The transition from defensive use of language to active and conscious use of language was achieved after the paradigm shift during the sociology of knowledge phase for retrogressive analysis with regard to the self and the peripheral world, for knowledge production and literature production. Albeit victimization from the human trafficking was experienced after the 2019 field trip and before the COVID-19 pandemic, psychoanalytic self-healing was performed with temporary assistance from the Yale University Police Department remotely. Conscious separation of the power-incentivized geographic control spheres as with geopolitics and the Orwellian informatic spheres as with satellite spatial orbits was guided by the GR and

compartmentalized territorial spheres on earth. The technical perceptive methods are deconstructive in nature in the social science context, and the differentiation between power and nature was psychologically prepared by Hall's (1976) anthropological psychology.

2.1. Researcher Description

The researcher theorized black hole and white hole thermonuclear binding around 2004 before later active human rights research in nuclear proliferation in 2010. First evidence on the cyber and AI issues appeared to the researcher at the end of 2014 with an internal pitch video of the PRC Ministry of Public Security. Due to the telecommunication surveillance and digital cyber surveillance, academic communication on the issues were mainly conducted on art visualization of radiative matters in the environment, and philosophical communication on the conceptual frameworks of consciousness and cognitive preservations in the propaganda spheres. The Big Bang epistemology was adopted in the cinematic arts for the communication method illustrated in *figure 2*. The concept was explained to the researcher's graduate dissertation committee before in warning on the autocratic development model's ecological and real economic harms, however, due to the dictatorial incentive building on nominal tiering up the political status of the university through reform, the propaganda driven interests blinded many of the administrative staff and faculties.

Power-incentivized structural erosions to human autonomy have been a consistent observational conclusion of the researcher's human rights works. Somatic psychology has been one of the strategies the researcher has adopted in the social interactions in PRC for authenticity of the social interactive environment, combined with social theater approach. Against the power-

incentivized structural calculations, the cognitive process of growth mindset was hedged against the structural center of power placing the geographically and orbitally bounded informatics spheres. Surveillance and cognitive reinforcement feeds on personal devices was shifted with mental calculations between the propaganda thematic frequencies and social environmental changes. The objective mapping has been illustrated in the graphical abstract with the technical analysis on the epidemiological carriers of autocratic & dictatorial psychopathology with individually targetable devices (Pachankis, 2022k).

The researcher conceived a quantum chromodynamics method applied in cinematic sensors and postproduction software during undergraduate studies, and used it for nonproliferation research exhibited subtly in the form of artworks (Pachankis, 2008). In a 2010 art exhibition "The Travelling Artwork" invited by Piso (2010), the researcher first coded the information as described by the agentic perspective of social cognitive theory (Bandura, 2001) on the proliferation issues observed in Beijing and the indigenous cultural militant ambitions. The gamma ray information was coded in the photochemical effects on charge-coupled device (CCD) with the linguistic hint from the title "Soiled Tattered Tissue" (Pachankis, 2010). The Chinese linguistics only adopted the commercial product meaning of "tissue" and not the biological meanings for discretions on communication surveillance (Pachankis, 2022c). Symbolic cultural information on the revisionist mentalities (Yuan, 1998) were encoded in the behaviors of the actors & actresses, but not perfectly for the drawbacks from the shooting process. The proliferation sources were located on the military testing sites near Beijing city and nuclear reactors near the water source in Miyun district (Pachankis, 2022j). Information on the airborne gamma level's possible connections to the Xinjiang Production and Construction Corps were discussed with a professor who is now retired.

As the researcher mostly worked as editor in professional settings between 2010 and 2017, he gathered industrial and social survey in forms of conversations through the interactions. The later Porter value chain analysis noticed the dictatorial psychopathological spread (Pachankis, 2017a) with relation to linguistic computation & AI (Pachankis, 2018 & 2022c) in graduate studies. A prerequisite mental mapping with somatic psychology in preserving the self from emotion algorithms during the psychoanalytic processes was predicted (Pachankis, 2017b) and reinforced by the researcher's encountering with John Pachankis around July 2017 (Pachankis, 2022c). The recent experiences and motivations for a blissed homosexual marriage informed and incentivized the research design.

2.2. Participants

The researcher's psychoanalytic ego has been present in the whole participation process. Eissler (1953) explicated the psychoanalyst's ego in the intermediate interactive processes between psychoanalytic technique and psychoanalytic theory. The participant adapted Bollas' (1993) theory on the destructive narcissism that can come to be with suppressed id to the power-structuralized personality for observation and detection in the psychoanalytic technique, while the psychoanalytic theory the researcher had long held, i.e. the publicized personality of dictators conducting through the structure in mass psychological processes. Dictatorial wills propagate through informatics that can be objectified by earth orbits no different from any physical signals (Pachankis, 2022h).

Contrary to the structural deterministic perspective to individual behaviors, where the structure tries to shape, the structures' behaviors became the participants of the observational research

through the human traffickers' behaviors in cyber illustrated in the graphical abstract and in the civil society. Limited information has been obtained on the human traffickers, but definitely identified to one of their accomplices (Pachankis, 2022c). With the subsequent interactions with the human traffickers in the cyber domain, triangulated patterns appeared on their purpose of human trafficking corresponding to the psychoanalyst's initial intuition and theory. Points of contact of the human traffickers include their power base in PRC, the Philippines, Ouagadougou, Burkina Faso, and other similar areas. Distribution in the USA was also noticed in in-person trafficking and possible cyber trafficking, and two possible Federal Bureau of Investigations (FBI) and / or National Security Agency (NSA) agents of African origins were involved in the participation. Other observers with white ethnicities were also noticed in New York, especially in front of the Consulate General of PRC in New York. The correlations to Quinn's (2023) report on the PRC covert police station in Manhattan were later triangulated, especially regarding the privacy transgressions and breaches in the 2019 field trip in New Haven (Pachankis, 2022j). Relevant criminal activities were previously reported to the International Court of Justice, after the participation of the Pingfang Police Station in Beijing that indicated the human traffickers being from the PRC power institutions with the People's Liberation Army (PLA) included (Pachankis, 2022c).

Unknown participant(s) in the cyber operations and AI generations have been behind the text-mining and structure. The AI participation is abstract but not absent in contemporary psychological landscape. This sphere of participation can be pathological to human society with actual adverse psychological outcomes if used inappropriately. Psychological warfare is not waged by the algorithms of AI, but the cyber operations' intentions & purposes can still be observed by psychoanalysts and psychologists, and phenomenologically analyzed with

engineering mindsets. This substructural sphere of participation is taken into consideration in the research designs with the ubiquitous satellite distributions and cyber domain politics (Pachankis, 2022b & 2022k). The cyber sphere of participants is intertwined with structures and acknowledged reciprocity. The AI and covert cyber espionage's mass psychological influences and impacts in the global structure are illustrated in *figure 3*.

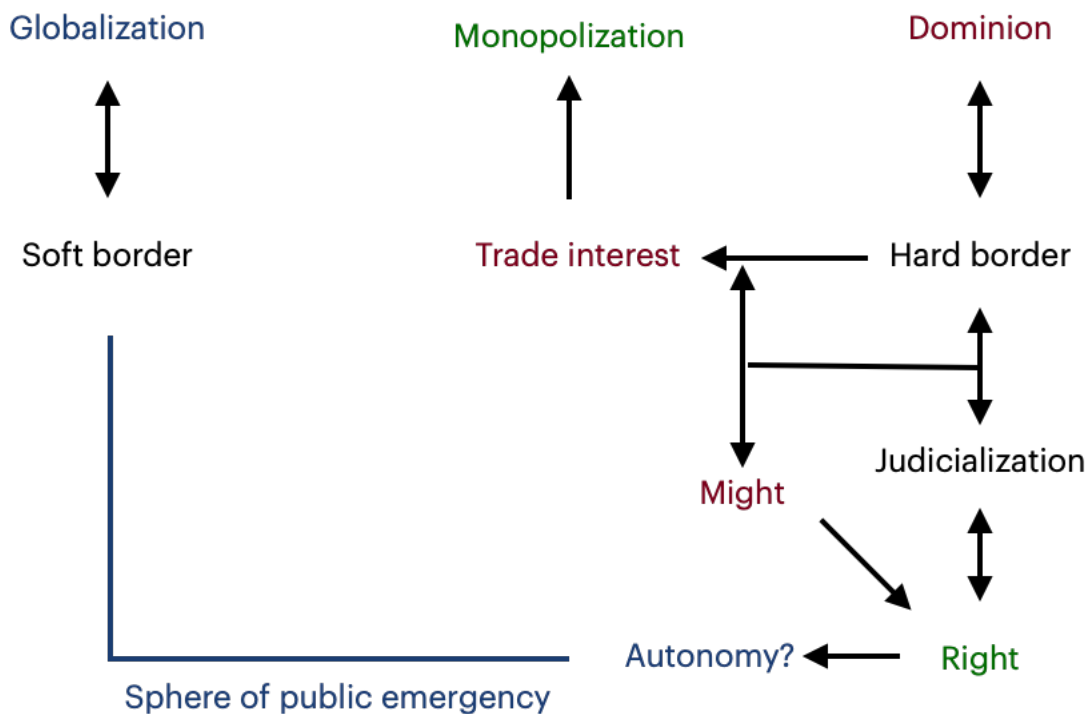


Figure 3. The looped autocratic cyber impact to liberal international democracy. (Pachankis, 2022b)

2.3. Researcher-Participant Relationship

Ego is not the self. The researcher's categorical identity in the participation applied psychoanalysis with physical acting. The consciousness of the participant belongs to the lookback time of the researcher, and the researcher's natural epistemology guided the physical

acting in the social structures and in the interactions with the social structures. It is less clear though on the researcher's relationship with the perpetrators of the covert Chinese cyber operations, especially if and why the human trafficking were target-specific. Plausible inference was drawn on the researcher's high school theory on black hole and white hole thermonuclear binding and chose not to join the CPC. The other element of AI with cyber trafficking that is individually targetable means that even if the human trafficking were specific on the researcher, mass surveillance trafficking was also present.

The researcher was institutionally and categorically alienated by the US structural participants. Such alienation can be multifaceted in the multilateral domain: 1) democratic countries' acknowledgement on the dictatorial regimes brought on the security dilemmas to the civil society with reciprocity on the complexities of propaganda & financial incentives; 2) cyber privacy breaches and transgressions to the US citizens while the researcher was there (Pachankis, 2022j); 3) the tails of the human trafficking on the researcher on US homeland (Quinn, 2023).

Both elements persisted in the researcher's following research activities online and offline, especially with the involvement on the Coursera course offered by the University of Arizona professor Chris D. Impey, *Teaching Astronomy* team on Twitch, and the astronomical club *Astropedia* on Discord. Cyber-based interruptions and verbal nuclear threats on *Astropedia* were detected during my astronomical lab experiment with observation & data, and targeted psychological attacks in commercialized products were exhibited in some of the games in *Teaching Astronomy* streams. These pieces of information complemented the conceptual model of the cyber-based "Stanford prison" (Pachankis, 2018). Incentives in metadata trade-offs in the back-end are presumed in all the cyber-based coercive mechanisms, with the realm of knowledge production included.

2.4. Recruitment Process and Data Collection

The research recruitment was a passive-reactive process. The data were collected simultaneously to the participations, with the continuous time series of the researcher's activities. The participants are selected by their roles in the structures and data are collected by natural observation with their responses to their interruptions and / or observations on the researcher. For example, the researcher had a Chinese company made Android phone and iPhone, and thought to investigate on the water supplies in New York in comparison to the previous nonproliferation research, which was also a risky impulse that may have alerted the FBI with the alienation. During the field research while in New York, a possible NSA or FBI black agent warned the researcher to leave one area in Brooklyn through iPhone hacking with the city phone charge facility connection, and the Chinese-origin owner of a small shop near the phone charge facility seemed to be suspected by the agent.

2.5. Data Analytic Strategies

Since both sides have privacy intrusions and privacy transgressions in the cyber and cyber-extended domains, the data analytic strategies had to extend the scope of structures with deeper analyses on the purposes. The analysis followed the order of: empirical confirmation on astronomical / cosmological theory, personal confirmation on love and marriage with the establishment clause, dissemination of previous research & evidence for conclusions arrived at,

and self-management on knowledge production & dissemination based on bridging current structural intersubjectivities (Gill, 1997).

Satellite distribution by countries were the first element being analyzed. Pachankis (2022h) analyzed the Cold War outer space competition. The evidence suggested that the US space development followed an exploratory paradigm and brought welfare with science with global allies. In contrast, the Soviet block's earth orbit satellites mainly followed a geopolitical utility and power utility paradigm of accumulating aggressive military capacities and propaganda efficacy through communication technology development. The latter influenced main features of the Chinese geostationary satellites that can be the sources in privacy & human rights transgressions (Pachankis, 2018 & 2022g). Evidence of the Chinese Mozi Quantum satellite's contamination of outer space thermonuclear environment was obtained afterwards (Pachankis, 2022f). The analysis in outer space was corroborated by Alderman & Kennedy's (1992) detailed accounts on the FBI's operational rationales.

The use of text-mining in democratic elections and public influence differ from autocratic text-mining and human trafficking. Albeit both aggregate mass psychology and are harmful to social justice and human autonomy, autocratic uses have more power potentials in the coverage of control for extreme social stratification. Any deceptive methods can be used, including with capitalism itself and capital incentives in coercion sampling (Pérez-Sales, 2022). The loss in democratic trust (Festenstein, 2009) contributed by such operations further impacts on democratic polities' efficacy in counteractions. Furthermore, chronic exposure to the form of communication environment can result in complex post-traumatic stress responses (CPTSD). Structural simulations and disinformation simulations make use of social expectations, normalcies, and normative beliefs. Dissimilar to popular perceptions with the cinematic

portrayals, psychopaths can be more calculative than most people and more rigorous than research scientists. In normative ethics and knowledge production, how psychopaths think is usually not discussed and in military contexts the consequences of the psychopathological conducts are often labelled with vague terms for resilience and strategic advantage, such as cyber warfare, electronic warfare, and recently, neuro-cognitive warfare (McCreight, 2022). As Pérez-Sales (2022) has discussed in the context of torture, the emergence of technological involvements is a combination of the psychopaths' control of State power and the consequential social control manipulating market economy to a niche with the changed financial incentives detached from corporate and business ethics. Gloating over others' sufferings, if not apathy for the accomplices, in the course of achieving one's own ends or promised collective interests is one of the characteristic traits of the psychopathological behaviors. There are more normalized translations of Mao Zedong's sayings that reflected such traits in the "Mao Zedong's Thoughts", "Battling with heaven is endless joy, fighting with the earth is endless joy, and struggling with humanity is endless joy" (The Epoch Times, 2005), whereas in the original Chinese wording, the three verbs were used with the same wording and I would transliterate it as "conquer" for accuracy (Radio Free Asia, 2020). It is only by the realist differences in power, "conquer" may be reflected as "battle" and this is explainable to the passive-aggressiveness of PRC diplomacy (Browne, 2016).

With the technological extensions on psychopathological behaviors, the physical torture and psychological torture may arrive differently in time to the victims, and the scales of such extensions can be largely disruptive and destructive to democratic societies, democratic procedures, and democracy formation. The perspectives from medical and psychological practices have more evidential values, however, reliability and construct validity are *post facto*

and the research sought a predictive approach to the adverse mass psychological impacts (Pérez-Sales *et al.*, 2021). With the uncertainties in the psychopaths' models, algorithms, and etc., thirteen elements were listed in 1) Unauthorised access (tapping) and monitoring access; 2) Control and manipulation of personal information; 3) Spoofing and Identity Theft; 4) Monitoring and Cyberstalking; 5) Discriminatory statements; 6) Harassment; 7) Threats; 8) Dissemination of personal or intimate information without consent; 9) Blackmail; 10) Discrediting; 11) Technology-related sexual abuse and exploitation; 12) Attacks to channels of expression; 13) Omissions by actors with regulatory power, (Pérez-Sales & Serra, 2020) and the less researched are remotely-controllable health attacks (Pérez-Sales *et al.*, 2021) such as rapidly changing a person's computer screen brightness during myocarditis symptoms with surveillance methods (Beretas, 2022), whereas if sudden deaths can be accelerated from existing symptoms, the assassinations are hardly noticeable or if noticed, traceable, by traditional autopsy methods. In terms of businesses associated with computer science, physical devices are able to be attributed to real-life individuals. With branding and marketing, bluetooth, account IDs, etc. can be used to traffic the same individual through different APPs' push notifications and consumer behavior incentive designs, whereas the backend servers can be attributed to the same data controller. The complexities of the operable systematic processes have further capabilities to form a torture and ill-treatment environment both online and offline, especially if in combination with power and disguised behind official capacities (Pérez-Sales, 2021). In military contexts, electronic combat, kinetic or non-kinetic threats may cover the weaponry systems but less on the social network basis, and current studies in civil contexts are mainly constrained to the illicit financial and data gathering activities such as phishing defined in social engineering attack (Jari, 2022).

2.6. Methodological Integrity

The research method expanded the engineering context to the specificities in space science typical of satellites, and social defined in a calculated outcome in the interest the perpetrator(s) (Pérez-Sales, 2022), either successful or not. In military operations, kinetic threats are associated with the scientific instruments in space exploration with the opposing camps between scientific liberalism with exploratory paradigms and realpolitik applications in purpose-specific paradigms (Pachankis, 2022h). Ethical hacking in the dark web mainly seeks to minimize the threats and vulnerabilities in privacy protection, however, its potentials in the civil society have not yet been fully discovered, including the choices of ethics between surveillance in democracies and multilateral & international relations solutions.

The analyses were implemented intuitively by procedures in avoiding formal fallacies in the research process, and the validity & face validity were dependent on the researcher's marriage (Pachankis, 2022i). The construct validity was confirmed with the researcher's ordination and name change (Pachankis, 2022c), and inter-rater reliability dependent on research publication processes. The key reliability on professor Chris D. Impey was accompanied with test-retest reliability between the astronomical / cosmological sciences communications, and other mechanisms of inter-rater reliability in half-research *Coursera* courses for the multidisciplinary research. Occasional revisits on media psychology were conducted in the researcher's self-monitoring (Bollas, 1993). No closed model of the research is constructed with the growth mindset premise with a cisgender buffer away from the death wish towards the dictator after the intervention by Chris D. Impey, and aided by self-hypnosis on the cisgender heterosexual

dominant social structure with the nude art (Pachankis, 2021) for exclusion on the real-life "prisoner" model.

Counter-transference was conducted in the quantum realm to assuage the psychoanalytic dualities faced by such a unique methodology acquired'. (Pachankis, 2022a) It was with my social observational technique between cisgender and sexuality from an anthropological perspective on modern & contemporary society seen in *figure 4* with my Gestalt structure away from original triangulation and the psychoanalyst ego's involvement in the dictatorial constant "Stanford prison", the somatic approach in a social clinical setting of situational dependency theorized by J. E. Pachankis (2007) with the "group-based self-protective attributions" in the totalitarian sociopolitical environment, my own body & existence became part of the materials involved. With the organizational criminological research (Pachankis, 2022k), the paradigm-shift on regaining homosexual desiring from the destructive heightened signals that aimed to trigger lust in militarizing homosexuality through systematic coercion mechanisms with keyboard trafficking & targeted surveillance, was aided by the sexuality externalization with art practice as intermediate artifacts (Pachankis, 2021 & 2022a) during the continued victimization processes (Pachankis, 2022g).

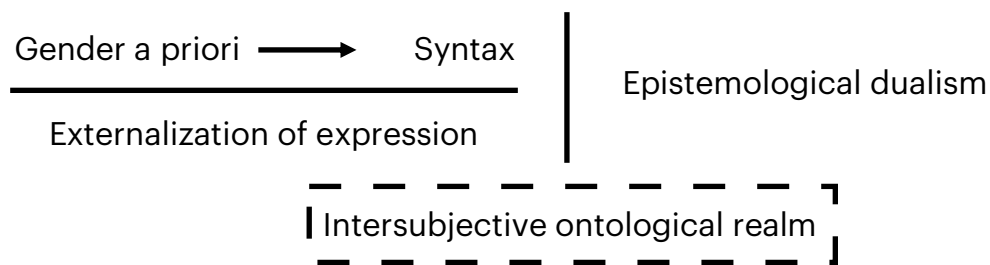


Figure 4 The fundamental dimension of personal emotion in the cyber ontological construct.

3. Results

The Bell curve of memory were retrieved on the fundamental hypothesis of LGBTQIA⁺ stigmatization with new combinations in power structure, cosmological, and anthropological consciousness re-combinations. If the dictatorial AI generation of epidemiology is the origination point of A, its periphery of spread point of C, and the participating ego point B, Poincaré (1907) demonstrated that "we should always find between A and B and between B and C new elements D and E, such that

$A = D, D = B, A < B; B = E, E = C, B < C$ "

and "would always remain unsolved" with the formula:

" $A > C, A = B, B = C$ " in the manifolds.

Table 1 summarizes the epidemiological correlational developments from the astronomical & cosmological results (Kaldor, 2011 and Pachankis, 2022d). It can be seen that the reversal impact of the dictatorial psychopathology in seriousness is not entirely positively correlated to geographic proximity, even when the symptoms of human responses may be. The monetary transmission mechanism with informatics by the dictatorial & autocratic regime and the mass incentive implications for capitalist democratic economies can be the psychosocial cause from political economy, which derives the social behaviors in democracies and in turn degraded the moral social foundations of liberal democracies from the bottom up. With the compartmentalization, judicialization, and secularism (Pabst, 2011), the drive towards pragmatism in democratic trust (Festenstein, 2009) further exacerbated the power suppression on democratic societies from the United Nations Security Council in the top down on the monetary domains and with financial coercion mechanism. This increased the Machiavellian fearless dominance (Zeigler-Hill & Marcus, 2016) in the global realm, underlying the retraction in the

liberal international globalization order in the degradation cycle with further aggression in the cyber domains. The internalized victim mentality of the regime constructs further boosted the nuclear weaponry as an external confirmation of the cisgender heterosexual male masculinity and female mentalities of power projection, from their misunderstood rationalities in the use of nuclear weapons by the United States of America, which in fact were out of defense for the NASA Deep Space Network (Pachankis, 2022d). The pre-civil castration indigenous cultural mentality complex is fundamental to the cisgender heterosexual projections of power from the anthropological social construct.

| Dictatorial psychopathological development | | Global Impact |
|---|--|---|
| Epidemiological source | Public health spillover | |
| Power ambition projected to civil society on large scale | Local nuclear contamination | Bubble growth |
| Financial needs triggered victim mentality narratives with nationalism propaganda | Monetary & supply monopolization | Currency contraction & trade deficit |
| Needs in human labor expanded the bureaucratic expenditures for enslavement | Suppression of freedom and erosion of autonomy | Cyber-based psychopathology |
| Power expansion triggered by ego boosts and defeatism mentalities | Further erosions on local biopsychosocial human health and accessibility to healthcare | Outer space thermonuclear environment contamination |
| Autocracy formation | Erosion of economy and monetary-financial sectors | Global crisis and democratic degradation |

Table 1. Retrogressive epidemiology analysis on the dictatorial & autocratic psychopathology.

Cultural revisionism utilizes anthropocentrism for the incitement of violence through cognitive bias and gaslighting. The cognitive biases are instinctual and the forms of communication can be calculated precisely with modern digital constructs. The computational linguistic effects are

shown in *figure 5*, and linguistically calculated pushes in digital media can be detrimental in expanding the psychopathological effects in mass psychology. The influence on the social emotional process can be further calculated with real-time keyboard trafficking and analysis with relation to informatics (Pachankis, 2022c), and can be subtle but powerful to the public mental & psychological health with implications in behavioral changes. I overcame the disparity through outer space research, but for many potential cases, the patients may not even have had the self-awareness nor notice. The subtraction of time differentiation with reflexive & responsive time lapses is the key to the public mental & psychological health crisis, and, contributed to the COVID-19 pandemic spread (Pachankis, 2023a), manipulations in organizational behaviors with mechanisms seen in *figure 3*. The reconstruction of personal autonomy is paramount to the regaining in freedom; however, the calculative AI machinery will outrun human deliberations. Mindfulness is hence a subtle exercise between sanity and change. A mapping on the social-technical emotional projections in the ontological realms can be seen in *figure 5*.

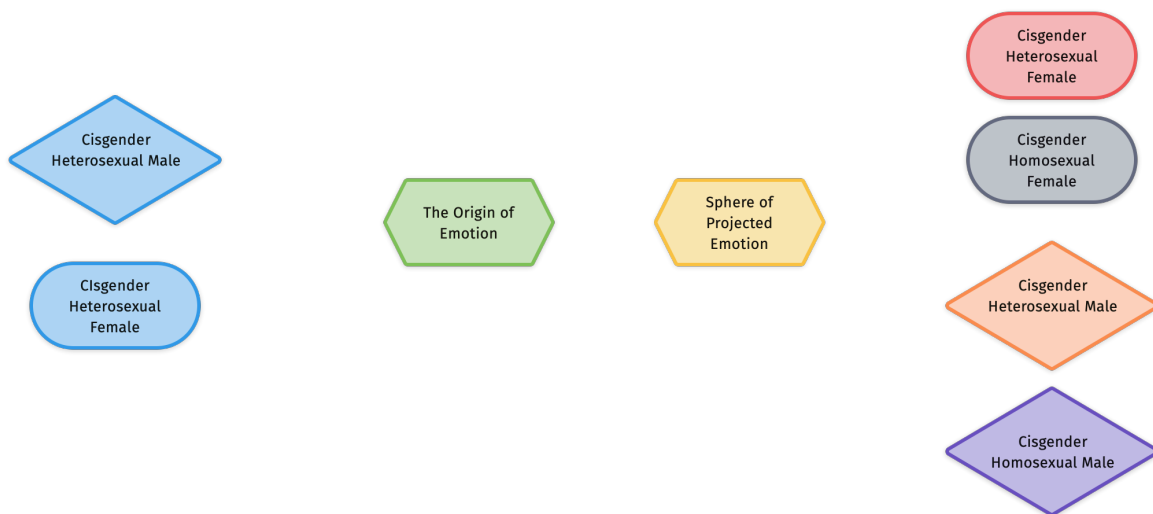


Figure 5. The mapping of gender and sexuality variants of emotional projection in society.

4. Discussions

The diminishing freedom and autonomy distort active behaviors with reflexive response behaviors. The organizational dissection of geographic areas with server-cyber constructs converted the behavioral factors to monetary & financial behaviors with geopolitical industrial interests in power accumulation seen in *figure 3*. PRC's militant expansionism is a result of the marginal effects from its global economic-financial militant operations under civil economy surrogacy with cyber & governmental apparatus, which in turn back-fed to the dictatorial & autocratic ambition. The delegitimization of the liberal & neoliberal institutionalism is the source of global mental & psychological health derogation, and the epidemiological distribution is unlikely to change in a short turn. The "shock therapy" started around 2017 with Brexit and Trade War not only further stigmatized the regional population, the backfire from autocracy and COVID-19 only exacerbated the emergence of phenomena. Traditional paradigm of public health focuses on the in-person medical and clinical therapeutic relationships, but rarely has epidemiological mapping. Computational methods of preventions in modern and contemporary practices with relation to sociology have circumstantial positive influences, but no so much different than stand-offs in Cold War mentality.

The fine line between psychological science and political science can be tricky in my assertion, even though the history of psychological science arose from the similar political circumstances (Menand, 2017), apart from the modern and contemporary deviations in technology. Concerning the negative freedoms, psychological science concerns less about materialism and strives not to exercise control over the patient(s). The use of medium for psychological healing process can be more scalable than the traditional biomedical methods, and overcome some limitations of pure

in-person clinical practices, supplementing the defense for public health against the modern & contemporary epidemiology. Even though regionalism has been a defense mechanism adopted by many countries, it will only derogate good ties and trust in the global realm, and fill in a harsher public health environment. Indegenizing psychology has been a regime agenda of PRC, and its cyber implication to the use of propaganda generation against the spirit of the psychological science has only begun to emerge, a process seen in the graphical abstract with heterogenous cryptography.

How to raise public awareness in such a context with commercialization of transcript products labelled in culture and many more in the application products on cellphones and computers? (Pachankis, 2019) With the computational methods of intrusion, counteraction with computational algorithms and similar methods to the epidemiological spread only affects strategy but not intentions of the source. Somatic psychology may be a choice for reducing anxiety from the continuous transgressions, and psychoanalysis for resilience, but neither eliminates the epidemiological source. The dictatorial & autocratic epidemiological extensions in the technological constructs are no different from the pre-civil tribal orders inflicted in the cyber domains. How to raise public awareness with psychological science outreach can be the subtle question but necessary action for human conscience. More subtle but probable data gathering among food supply to biopsychosociology and industrial output, monetary generation, and military production by the regime can be under way with the increased smartphone chip production regardless of environmental impact with the closed internet system and electronic warfare (Leite Junior *et al.*, 2021 and Pachankis, 2022j). The criminological technological construct can use the biological persons' movement and speed data in calculating the realpolitik outputs of the population, and design monetary and supplies mechanisms accordingly to the

autocratic wills (Pachankis, 2022e), which is defined by the Roman Statute as the crime against humanity. Metadata trading and covert military data gathering in the civil economies in the power-structural perspective, erodes the biomedical and biopsychosocial health of the public on a more profound scale.

Data Availability Statement

Due to the nature of the media used in the research design, data collected from the research are not made publicly available.

References

- Alderman, E. & Kennedy, C. (1992). In Our Defense: The Bill of Rights in Action. ISBN: 978-0380717200.
- Bandura, A. (2001). Social Cognitive Theory of Mass Communication. *Media Psychology*, 3:3, 265-299. https://doi.org/10.1207/S1532785XMEP0303_03
- Beretas, C. P. (2022). Smart Phones Surveillance Methods. *Journal of Clinical and Biomedical Recent Advances*, 1(1): 01-05. https://www.mkscienceset.com/articles_file/123-_article1672219572.pdf
- Bollas, C. (1993). The fascist state of mind. In *Being a character - psychoanalysis and self experience* (pp. 193–217). Routledge.
- Breznik, M. (2004). *Cultural revisionism – culture between neo-liberalism and social responsibility*. Peace Institute. https://www.mirovni-institut.si/wp-content/uploads/2014/08/MI_politike_cultural_revisionism.pdf
- Browne, A. (2016). China's Passive-Aggressive Diplomacy. Wall Street Journal. <https://www.wsj.com/articles/chinas-passive-aggressive-diplomacy-1472542960>
- Butler, J. (2020). The Force of Nonviolence. London & New York: Verso. ISBN: 978-1788732765.
- Eissler, K. R. (1953). The effect of the structure of the ego on psychoanalytic technique. *Journal of the American Psychoanalytic Association*, 1, 104–143. <https://doi.org/10.1177/000306515300100107>
- The Epoch Times. (2005). Commentary 4: On How the Communist Party Opposes the Universe. In: *Nine Commentaries on the Communist Party*. <http://www.ninecommentaries.com/english-4>

- Festenstein, M. (2009). Truth and trust in democratic epistemology. In R. Geenens & R. Tinnevelt (Eds.), *Does truth matter?* (pp. 69–79). Springer. https://doi.org/10.1007/978-1-4020-8849-0_6
- Gill, S. (1997). Global structural change and multilateralism. In S. Gill (Ed.), *Globalization, democratization and multilateralism* (pp. 1–17). St. Martin's Press. https://doi.org/10.1007/978-1-349-25555-9_1
- Hall, E. T. (1976). *Beyond culture*. Anchor Books. ISBN: 0-385-12474-0.
- Hettne, B. (1997). The double movement: Global market versus regionalism. In R. W. Cox (Ed.), *The new realism: Perspectives on multilateralism and world order* (pp. 223–242). St. Martin's Press, Inc. https://doi.org/10.1007/978-1-349-25303-6_12
- Jari, M. (2022). An Overview of Phishing Victimization: Human Factors, Training and the Role of Emotions. In: Wyld, D. C. and Nagamalai, D. (eds.) *Computer Science and Information Technology*, pp. 217-228, DOI: [10.5121/csit.2022.121319](https://doi.org/10.5121/csit.2022.121319).
- Joseph, E. D. (1987). The consciousness of being conscious. *Journal of the American Psychoanalytic Association*, 35, 5–22. <https://doi.org/10.1177/000306518703500101>
- Kaldor, M. (2011). War and economic crisis. In C. Calhoun & G. Derluigian (Eds.), *The deepening crisis: Governance challenges after neoliberalism* (pp. 109–133). New York University Press. <https://doi.org/10.18574/nyu/9780814772805.003.0006>
- Leite Junior, W. C., de Moraes, C. C., de Albuquerque, C. E. P., Machado, R. C. S., & de Sá, A. O. (2021). A triggering mechanism for cyber-attacks in naval sensors and systems. *Sensors*, 21(9). <https://doi.org/10.3390/s21093195>

McCreight, R. (2022). Neuro-Cognitive Warfare: Inflicting Strategic Impact via Non-Kinetic Threat. *Small Wars Journal*. <https://smallwarsjournal.com/jrnl/art/neuro-cognitive-warfare-inflicting-strategic-impact-non-kinetic-threat>

Menand, L. (2017). Why freud survives. *The New Yorker*.
<https://www.newyorker.com/magazine/2017/08/28/why-freud-survives>

Meyer, I. H., Pachankis, J. E., & Klein, D. N. (2021). Do genes explain sexual minority mental health disparities? *Archives of Sexual Behavior*, 50(3), 731–737. <https://doi.org/10.1007/s10508-020-01909-2>

Pabst, A. (2011). The paradox of faith: Religion beyond secularization and desecularization. In C. Calhoun & G. Derluguian (Eds.), *The deepening crisis: Governance challenges after neoliberalism* (pp. 157–181). New York University Press.
<https://doi.org/10.18574/nyu/9780814772805.003.0008>

Pachankis, J. E. (2007). The psychological implications of concealing a stigma: A cognitive-affective-behavioral model. *Psychological Bulletin*, 133(2), 328–345.
<https://doi.org/10.1037/0033-2909.133.2.328>

Pachankis, Y. I. (2008). Three-way Color Corrector -- initial electrochemical method with cinematic arts. <http://dx.doi.org/10.13140/RG.2.2.36771.12324>

Pachankis, Y. I. (2010). Soiled Tattered Tissue. <http://dx.doi.org/10.13140/RG.2.2.25946.21449>

Pachankis, Y. I. (2017a). The dualist approach to international law and totalitarian political flowchart. <https://doi.org/10.13140/RG.2.2.31449.60009>

Pachankis, Y. I. (2017b). Psychoanalytic process on self-help from dictatorial suppression. <https://doi.org/10.13140/RG.2.2.18027.82729>

- Pachankis, Y. I. (2018). Psychoanalysis on the pre structural dictatorship through culture & semantics. <https://doi.org/10.13140/RG.2.2.30350.23361>
- Pachankis, Y. I. (2019). The Semantics of the Dictatorial Nuclear Threats. <http://dx.doi.org/10.13140/RG.2.2.25970.79043>
- Pachankis, Y. I. (2021). The masculinity and femininity in homosexual male body – male body in dictatorial people’s republic of china. <https://doi.org/10.13140/RG.2.2.13414.09284>
- Pachankis, Y. I. (2022a). *Astrophotography: Concept and flows*. Independently published. ISBN: 979-8847781275.
- Pachankis, Y. I. (2022b). The cultural revisionist element behind p. r. china’s neo-nazism: A cross-cultural and cross-religion research. *International Journal of Advanced Multidisciplinary Research and Studies*, 2(4): 435–451. <http://www.multiresearchjournal.com/arclist.php?list=2022.2.4&id=382>
- Pachankis, Y. I. (2022c). Epistemological extrapolation and individually targetable mass surveillance - the issues of democratic formation and knowledge production by dictatorial controls. *International Journal of Innovative Science and Research Technology*, 7(4): 72–84. <https://doi.org/10.5281/zenodo.6464858>
- Pachankis, Y. I. (2022d). *The lenses of quantum physics on earth to the cosmos – from the humanities to the apocalyptic inevitability*. Eliva Press.
- Pachankis, Y. I. (2022e). Mass Surveillance, Behavioural Control, And Psychological Coercion - The Moral Ethical Risks in Commercial Devices. In: Wyld, D. C. and Nagamalai, D. (eds.) *Computer Science and Information Technology*, pp. 151-168, DOI: [10.5121/csit.2022.121313](https://doi.org/10.5121/csit.2022.121313).

Pachankis, Y. I. (2022f). Physical Signals and Their Thermonuclear Astrochemical Potentials — A Review on Outer Space Technologies*. *International Journal of Innovative Science and Research Technology*, 7(5): 669–674. <https://doi.org/10.5281/zenodo.6618334>

Pachankis, Y. I. (2022g). A posteriori evidence data on war crimes by the people's liberation army's metadata broadcasting codes inserted on transgender human rights themed cinematic art. In: *Quinhonk: Photography & Photographic Installations*. ISBN: 979-8848617740.

Pachankis, Y. I. (2022h). Reading the cold war through outer space: The past and future of outer space. *International Journal of Scientific & Engineering Research*, 13(6): 826–829. <https://doi.org/10.14299/ijser.2022.06.03>

Pachankis, Y. I. (2022i). A self-help guide to psychoanalysis in cisgender homosexual male from consciousness. *Journal of Marketing Management and Consumer Behavior*, 4(2): 93-110. <https://journal-of-marketing-management-and-consumer-behavior.com/index.php/JMMCB/article/view/221/103>

Pachankis, Y. I. (2022j). Targeted human trafficking – the wars between proxy and surrogated economy. *International Journal of Scientific & Engineering Research*, 13(7): 398–409. <https://doi.org/10.14299/ijser.2022.07.07>

Pachankis, Y. I. (2022k). Technical analysis on the cyber organizational criminology of dictatorial military conducts - experience from human trafficking and coercions by military cyber aggressions. *International Journal of Security, Privacy and Trust Management*, 11(3): 1–19. <https://doi.org/10.5121/ijspmt.2022.11301>

Pachankis, Y. I. (2023a). Jeopardies in human security and politicization of COVID-19. *Ethics, Medicine and Public Health*, 27C: 100871. <https://doi.org/10.1016/j.jemep.2023.100871>

- Pachankis, Y. I. (2023b). Natural Mutation and Human Catalysis – Philosophy After the Big Bang Theory. *Biomedical Journal of Scientific & Technical Research*, 48(3).
- Piso, I. (2010). The Travelling Artwork. <https://www.inezposito.nl/travellingartwork>
- Poincaré, H. (1907). *The value of science*. The Science Press.
- Pérez-Sales, P. & Serra, L. (2020). Internet and communications as elements for CIDT and Torture. Initial reflections in an unexplored field. *Torture Journal*, 30(1): 5-22.
<http://dx.doi.org/10.7146/torture.v30i1.120593>
- Pérez-Sales, P. (2021). Defining and documenting threats in the context of ill-treatment and torture. *Torture J.*, 31(1): 3-18, DOI: [10.7146/torture.v31i1.125777](https://doi.org/10.7146/torture.v31i1.125777)
- Pérez-Sales, P., González-Rubio, R., Mellor-Marsá, B., and Martínez-Alés, G. (2021). Beyond torture checklists: an exploratory study of the reliability and construct validity of the Torturing Environment Scale (TES). *BMC Public Health*, 21(1): 372. <http://dx.doi.org/10.1186/s12889-021-10384-w>
- Pérez-Sales, P. (2022). The future is here: Mind control and torture in the digital era. *Torture J.*, 32(1-2): 280-290, DOI: [10.7146/torture.v32i1-2.132846](https://doi.org/10.7146/torture.v32i1-2.132846)
- Quinn, J. (2023). China's Police Station in Manhattan Has Closed Its Doors, State Department Says. National Review, National Security & Defense.
<https://www.nationalreview.com/2023/01/chinas-police-station-in-manhattan-has-closed-its-doors-state-department-says/>
- Radio Free Asia. (2020). 专栏 | 夜话中南海：习近平百分之百遗传了毛泽东的斗争瘾。
<https://www.rfa.org/mandarin/zhuannlan/yehuazhongnanhai/gx-09142020153739.html>
- Spence, J. D. (1991). *The Search for Modern China*. New York & London: W. W. Norton & Company. ISBN: 978-0393307801.

Strange, S. (1997). Territory, State, Authority and Economy: a new realist ontology of global political economy. In: Cox, R.W. (eds) *The New Realism*. International Political Economy Series. Palgrave Macmillan, London, DOI: [10.1007/978-1-349-25303-6_1](https://doi.org/10.1007/978-1-349-25303-6_1)

Sugiura, K. (1996). The sun, the Moon, and the Eyeball —A Cosmic Correspondence. In: Ogawa, T., Miura, K., Masunari, T., Nagy, D. (eds) *Katachi U Symmetry*. Springer, Tokyo. https://doi.org/10.1007/978-4-431-68407-7_5

Unknown. (12978 B.C.). *Untitled*. [Cave Painting]. Lascaux, France. <https://arthearty.com/significance-of-lascaux-cave-paintings>

Yuan, J.-D. (1998). Culture matters: Chinese approaches to arms control and disarmament. *Contemporary Security Policy*, 19:1, 85-128. <https://doi.org/10.1080/13523269808404180>

Zeigler-Hill, V. & Marcus, D. K. (2016). The Dark Side of Personality: Science and Practice in Social, Personality, and Clinical Psychology. *American Psychological Association*. ISBN: 978-1433821875.