



Munich Personal RePEc Archive

In the Shadow of the United States: The International Transmission Effect of Asset Returns

Chang, Kuang Liang and Chen, Nan Kuang and Leung,
Charles Ka Yui

National Chiayi University, National Taiwan University, City
University of Hong Kong

2011

Online at <https://mpra.ub.uni-muenchen.de/32776/>
MPRA Paper No. 32776, posted 13 Aug 2011 02:30 UTC

In the Shadow of the United States: The International Transmission Effect of Asset Returns*

Kuang-Liang Chang, Nan-Kuang Chen, and Charles Ka Yui Leung[†]

August 2011

Abstract

We examine how the fluctuations in financial and housing markets in U.S. affect the asset returns and GDP in Hong Kong. In contrast to the results from linear specifications, which concludes that the U.S. and Hong Kong are virtually delinked in terms of the asset markets, our regime-switching models indicate that the unexpected shock of US stock returns, followed by the TED spread, has the most significant effect on HK asset returns and GDP, typically in the regime with high

*Acknowledgement: We are grateful to (alphabetical order) Wing Hong Chan, Bob Edelstein, Andrew Filardo, Eric Hanushek, Dong He, Ivan Jaccard, Fred Kwan, Tommy Leung, Yue Ma, Miki Seko, Dragon Tang, Byron Tsang, Peng Wang, Isabel Yan, Matthew Yiu, Jiro Yoshida, especially Thomas Lubik's careful reading of different drafts of this paper, and seminar participants at City University Workshop on macroeconomics and monetary policy, HKIMR Summer Workshop, NUS symposium on Asian real estate market for many useful comments and suggestions. Edward Tang provides excellent research assistance. The work described in this paper was partially supported by a grant from the Research Grants Council of the Hong Kong Special Administrative Region, China [Project No. CityU 144709]. The usual disclaimer applies.

[†]Correspondence: Chang: Department of Applied Economics, National Chiayi University, 580 Sinmin Road, Chiayi City 60054, Taiwan. TEL: 886-5-2732852, E-mail: klchang@mail.ncyu.edu.tw. Chen: Department of Economics, National Taiwan University, 21 Shuechow Road, Taipei 10021, Taiwan. TEL: 886-2-2351-9641 ext. 471, E-mail: nankuang@ntu.edu.tw. Leung: Department of Economics and Finance, City University of Hong Kong, Kowloon Tong, Hong Kong. TEL: 852-2788-9604; Fax: 852-2788-8806; E-mail: kycleung@cityu.edu.hk.

return and low volatility. For the in-sample one-step-ahead forecasting, US Term spread stands out to be the best predictor.

Key words: currency board, fixed nominal exchange rate, international transmission mechanism, hierarchical Markov regime-switching model, vector autoregressive model

JEL classification: E30, F40, G10

“Traditionally, Federal Reserve monetary policy has focused on the domestic economy. Although international factors have not been ignored, they have been subordinate to domestic concerns.... Recent trends and developments, however, suggest this domestic orientation may not be entirely satisfactory for U.S. monetary policy. There is a growing recognition of the fact that financial capital is increasingly mobile, and financial markets are evermore globally integrated. At the same time, varying degrees of dollarization have occurred in several emerging market economies and the dollar remains the world’s principal international currency despite evolving developments in exchange rate arrangements. These considerations have a number of important implications for U.S. monetary policy. For example, they help to explain why changes in U.S. monetary policy can have increasingly potent effects on emerging market economies...”

U.S. Congress (Joint Economic Committee), 2000.

“Recent research suggests another possibility, which is that U.S. monetary policy actions may have significant effects on foreign yields and asset prices as well as on domestic financial prices. For example, changes in U.S. short-term interest rates seem to exert a substantial influence on euro area bond yields... and appear to have a strong effect on foreign equity indexes as well. In contrast, the effects of foreign short-term rates on U.S. asset prices appear to be relatively weaker.”

Chairman Ben Bernanke, 2007.

1 Introduction

The potential significance of international transmission of fluctuations in economic activity and financial markets has gained increasing importance as interdependence across countries has rapidly risen during the last several decades. Increases in interdependence among economies may cause shocks or monetary policy in an economy spilling over to another via various transmission channels, such as close links in cross-border trades, foreign direct investment, global financial integration, and so on.

The transmission of shocks or monetary policy across economies has raised concerns

because it might cause externalities on other economies' employment, output, asset returns, and financial stability. For example, the "contagion" of financial panic caused rapid outflow of capital and currency crisis in Latin America and East Asia in 1990s, and of liquidity crunch in money markets (especially commercial papers and repos) in 2007-08 subprime crisis (Brunnermeier and Pedersen, 2009; Corsetti et al., 1999; Demyanyk and Van Hemert, 2009; Gorton, 2007; Kaminsky and Reinhart, 2000; Peek and Rosengren, 2000; Radelet and Sachs, 1998; Taylor, 2009). Moreover, transmission in policy effect, leading to beggar-thy-neighbor, or even competitive devaluation, has stimulated a large literature on the potential gains from international monetary policy coordination (Corsetti and Pesenti, 2001, 2005; Obstfeld and Rogoff, 2002; Canzoneri et al., 2005; Benigno, 2002; and Benigno and Benigno, 2006; to name a few).

In particular, changes in both real and financial sectors in the United States (henceforth *U.S. or US*) have long had an important influence on the rest of the world, primarily because of the size of U.S. economy and the role of U.S. dollar as a major reserve currency and medium of exchange for international trades and financial transactions. Our quotation from U.S. Congress (2000), Bernanke (2007), among others, have recognized such "*asymmetry*."

In this paper we focus on use *Hong Kong as a case study* on how the fluctuations in financial and housing markets in US would affect the asset returns and aggregate output of a small open economy. In particular, we would focus on the following questions. First, *how* do the U.S. financial markets affect the asset returns and aggregate output? Is it the expected component, the unexpected component, or the sum of the two? Second, *which* U.S. financial market variable tends to have the most significant impact on the asset returns and aggregate output? Third, do the U.S. financial market variables *always have the same impact* on the asset returns and aggregate output? Or, is it during the "crisis times" or "recessions" that the U.S. financial markets have more impact on Hong Kong (henceforth *H.K. or HK*) asset returns and aggregate output? Clearly, all these questions have important academic interest and policy implications. For instance, if we identify that it is the impact from U.S. to H.K. are different across regimes, the optimal policy for the local government could be *regime-dependent*. While it waits for more theoretical and structural modeling to provide a better answer, the current study may nevertheless

be able shed light on the issue.

Hong Kong is selected for several reasons. First, Hong Kong is a small open economy and is too small to affect the United States. And when the authority in the United States make policy decisions, it is unlikely that the consequences on the Hong Kong economy will be taken into consideration. Hong Kong is also highly open to international financial markets and constantly subject to shocks from foreign countries. More importantly, Hong Kong has fixed her exchange rate between HK-US dollar to US \$1 for HK \$7.8 since October 1983 (so-called “LINK” exchange rate), by establishing a currency board through the Hong Kong Monetary Authority (HKMA). Hong Kong has essentially given up the independency of monetary policy and therefore will not have feedback effects in response to exogenous shocks originated from foreign countries. All these suggest that the relationship between the effects of foreign shocks and Hong Kong economy will be one-directional, which provides an unusual “*natural experiment*” to examine cross-country spillover effects. Thus, this paper naturally focuses on the period when Hong Kong has adopted the LINK exchange rate. Although the sampling period may be short relative to some earlier studies, it covers several important incidents, including the 1987 stock market crash in U.S., the Asian financial crisis, the current “global recession.” It should be notice that during the whole sampling period, the *same nominal exchange rate is maintained*. And while many small open economies do not follow the same path, our results here may nevertheless serve as a benchmark for cross-country comparison.

We find that our two-step procedures yield dramatically different results from the ones delivered by linear VAR. First, the *expected changes* in U.S. financial and housing markets have almost *no effect* on the H.K. economy. Second, the unexpected shock of U.S. financial and housing markets are more likely to affect the asset markets than GDP in H.K., and the impact tends to occur in the state of high asset returns. Third, the *unexpected shock of US stock returns* has the *most significant effect* on H.K. asset returns and GDP, followed by the TED spread, and then the housing returns.¹ Finally, for the *in-sample one-step-ahead forecasting*, *US Term spread* stands out to be the best predictor for the H.K. asset returns and GDP. The regime switching model with US Term spread (Model

¹More discussion on the results will be presented in later sections.

B) not only outperforms all other specifications of single regime and regime switching models, but also different specifications of 7-variate linear VAR models. Our result that the US term spread stands out to be the best predictor for the H.K. asset returns and GDP echoes the well-known finding following a large literature that the term structure contains information about future inflation, future real economic activities as well as asset returns.² Clearly the term spread also wields a powerful spillover effect across countries. Overall, our results also suggest that regime-switching model may perform better the single-regime counterpart marginally.

The rest of the paper is organized as follows. Section 2 outlines the empirical models, where we consider five specifications of empirical models for the Hong Kong economy. Section 3 presents our baseline estimation results and conduct in-sample one-step-ahead forecasting. Section 4 concludes.

2 The Empirical Models

Our focus is to study how the U.S. economy may affect the H.K. GDP and asset prices. Since the macroeconomy and asset markets are closely related and may affect each other, a natural benchmark would be to use a linear VAR (vector auto-regressive) models with both the U.S. and H.K. variables.³ To our knowledge, this approach is not only used by some academics, but also some policy advice agencies. Formally, we have

$$Y_t = C + AY_{t-1} + U_t, \quad U_t = \Sigma \times V_t, \quad V_t \sim N(\mathbf{0}, R) \quad (1)$$

²The robustness of forecasting power of the term spread has been confirmed by the data of the U.S. as well as other advanced countries. Among others, see Stock and Watson (1989), Plosser and Rouwenhorst (1994), Estrella and Mishkin (1997), Estrella and Hardouvelis (1991), Chang, Chen and Leung (2010), and the reference therein. For a review of the more recent literature, see Estrella (2005), among others.

³For instance, Chang et al (2010) also show that the inclusion of stock market return contributes to the prediction of the housing return, and vice versa. Econometrically speaking, Sims (1980), among others, discuss why the VAR approach may be superior than the single-equation approach in prediction and interpretation of the econometric results. See also Lubik and Schorfheide (2003, 2005).

where $Y_t = [TERM(US), TED(US), SRET(US), HRET(US), SRET(HK), HRET(HK), GDP(HK)]'$, including term spread, TED spread, stock returns, and the housing returns of the U.S. and stock returns, housing returns and the GDP of H.K.⁴ The intercepts C is a 7×1 vector, Σ is a 7×7 diagonal matrix with diagonal elements σ_j^2 , $j = 1, \dots, 7$, V_t is a vector of standard normal distribution, $V_t \sim N(0, R)$, where the diagonal elements of the covariance matrix R are unities and those of its off-diagonal elements are ρ'_{ij} , $i, j = 1, \dots, 7$, $i \neq j$, and A is a 7×7 matrix. And to establish the robustness of the results, we consider three versions of linear VAR. The first two specifications, VAR(7)_1 and VAR(7)_2, do not impose any structural restrictions and they differ only the order of the last two variables. The third linear VAR model, VAR(7)_R, captures the earlier discussion that *H.K. aggregate variables do not affect the U.S. economy*. Thus, we restrict the model to be block-exogenous and several entries of the A matrix to be zero to formalize the restriction that H.K. aggregate variables do not affect the U.S. counterpart,

$$A = \begin{bmatrix} a_{11} & a_{12} & a_{13} & a_{14} & 0 & 0 & 0 \\ a_{21} & a_{22} & a_{23} & a_{24} & 0 & 0 & 0 \\ a_{31} & a_{32} & a_{33} & a_{34} & 0 & 0 & 0 \\ a_{41} & a_{42} & a_{43} & a_{44} & 0 & 0 & 0 \\ a_{51} & a_{52} & a_{53} & a_{54} & a_{55} & a_{56} & a_{57} \\ a_{61} & a_{62} & a_{63} & a_{64} & a_{65} & a_{66} & a_{67} \\ a_{71} & a_{72} & a_{73} & a_{74} & a_{75} & a_{76} & a_{77} \end{bmatrix}.$$

An *alternative* approach we propose here emphasizes on the non-linearity of the time series of both the U.S. and H.K. asset markets, as well as the asymmetry between H.K. and U.S. Formally, it proceeds with two steps. The first step extracts the *unexpected* shocks from the changes in the financial and housing markets of the U.S. economy. Unlike the case of linear VAR, however, expectation may change over time in the asset markets.

⁴Implicitly, this formulation assumes that there are potentially important interactions among the stock market, the housing market and the aggregate economy. For a theoretical justification, see Leung (2007), Leung and Teo (2009), among others.

For instance, it may depend on whether it is a “bull” or a “bear” market (among others, see Maheu and McCurdy, 2000), which suggests that a regime-switching model may be more appropriate. In addition, Chen and Leung (2008) show that in the context of a multi-period general equilibrium model that when there are heterogeneous financially constrained agents, the equilibrium relationship between the output (or, “fundamental”) and the property price may be non-linear. Third, a regime-switching model is consistent with the observations of short-run predictability of the property price and the long-run non-profitability (due to stochastic regime switch) of property market investment.⁵ Moreover, in case the true model is indeed a single-regime one, the estimated parameters across regimes would be found to be very similar. Thus, the regime-switching model does allow for a more flexible structure.⁶ In this paper, we estimate a four-variable regime-switching VAR (*RS-VAR*) model for the US economy:

$$Z_t = C^{US}(s_t) + A^{US}(s_t)Z_{t-1} + U_t^{US}, \quad (2)$$

where s_t is the unobserved state variable, $s_t \in S = \{1, 2\}$, $Z_t = [TERM, TED, SRET, HRET]'$ includes term spread, TED spread, stock returns, and the housing returns. The vector of intercepts is $C^{US}(s_t) = [C_1^{US}(s_t), C_2^{US}(s_t), C_3^{US}(s_t), C_4^{US}(s_t)]'$. In this model, the “shocks” are captured by the residual term, which is defined to be

$$U_t^{US} = \Lambda^{US}(s_t) (\Sigma^{US})^{1/2} V_t^{US}(s_t),$$

⁵The intuition is simple. If the regimes are persistent, then in the short run, the regime-switching model stays on a particular regime and hence behaves as if it is a simple linear model. Hence, we have the short-run predictability. On the longer run, however, stochastic regime switch will occur and since housing is relatively illiquid, investment strategies which based on the (single-regime) linear model would likely incur loss, and hence the long-run non-profitability.

⁶As the referee points out, regime-switching models may *over-identify*. This issue may be more serious in small sample. In the current context, we are unable to test whether the model over-identify. On the other hand, Leung, Cheung and Tang (2011) present evidence from transaction level data that there is a structural change in the house price and trading volume process. Thus, we consider it a worthwhile exercise to employ a regime-switching model on the Hong Kong data.

where Σ^{US} is a 4×4 diagonal matrix with diagonal elements $\sigma_{j,US}^2$, $j = 1, \dots, 4$,

$$\Sigma^{US} = \begin{bmatrix} \sigma_{1,US}^2 & 0 & 0 & 0 \\ 0 & \sigma_{2,US}^2 & 0 & 0 \\ 0 & 0 & \sigma_{3,US}^2 & 0 \\ 0 & 0 & 0 & \sigma_{4,US}^2 \end{bmatrix},$$

$\Lambda^{US}(s_t)$ is a 4×4 diagonal matrix with diagonal elements $\lambda_{j,US}(s_t)$, $j = 1, \dots, 4$,

$$\Lambda^{US}(s_t) = \begin{bmatrix} \lambda_{1,US}(s_t) & 0 & 0 & 0 \\ 0 & \lambda_{2,US}(s_t) & 0 & 0 \\ 0 & 0 & \lambda_{3,US}(s_t) & 0 \\ 0 & 0 & 0 & \lambda_{4,US}(s_t) \end{bmatrix},$$

which captures the difference in the intensity of volatility, and $V_t^{US}(s_t)$ is a vector of standard normal distribution, $V_t^{US}(s_t) \sim N(0, R^{US}(s_t))$, where the covariance matrix is given by

$$R^{US}(s_t) = \begin{bmatrix} 1 & \rho_{12}^{US}(s_t) & \rho_{13}^{US}(s_t) & \rho_{14}^{US}(s_t) \\ \rho_{12}^{US}(s_t) & 1 & \rho_{23}^{US}(s_t) & \rho_{24}^{US}(s_t) \\ \rho_{13}^{US}(s_t) & \rho_{23}^{US}(s_t) & 1 & \rho_{34}^{US}(s_t) \\ \rho_{14}^{US}(s_t) & \rho_{24}^{US}(s_t) & \rho_{34}^{US}(s_t) & 1 \end{bmatrix}. \quad (3)$$

Now we describe how the state of nature, s_t , evolves over time. The Markov switching process relates the probability that regime j prevails in t to the prevailing regime i in $t - 1$, $Pr(s_t = j \mid s_{t-1} = i) = P_{ij}^{US}$. The transition probabilities are assumed to be fixed and the transition matrix of the US economy is given by:

$$P^{US} = \begin{pmatrix} P_{11}^{US} & 1 - P_{22}^{US} \\ 1 - P_{11}^{US} & P_{22}^{US} \end{pmatrix}.$$

Despite its simplicity, previous work (such as Chang et al, 2010, 2011a, b) find that this simple structure is capable to capture the interactive dynamics of the U.S. housing and stock markets reasonably well. Since the state of the economy is unobservable, we identify the regime for given a time period by Hamilton (1994) smoothed probability approach,

in which the probability of being state s_t at time t is given by $\pi(s_t | \Omega_T)$.⁷ Given that we assume the state of nature shifts between two regimes in both economies, i.e., $s_t \in S = \{1, 2\}$, we identify the economy most likely to be in state j if $\pi(s_t = j | \Omega_T) > 0.5$, $j = 1, 2$.

Given estimated residuals of the U.S. economy from (2), the second step is to estimate the following *RS-VAR* model for Hong Kong:

$$X_t = C^{HK}(\omega_t) + A^{HK}(\omega_t) X_{t-1} + \gamma_z(\omega_t) z_{t-1}^i + \gamma_u(\omega_t) \hat{u}_t^{i,US} + U_t^{HK}, \quad (4)$$

where ω_t is the state variable of the H.K. economy, $\omega_t \in W = \{1, 2\}$, $X_t = [SRET, HRET, GDP]'$ includes stock returns, housing returns, and real GDP growth of the Hong Kong economy. Clearly, this RS-VAR is constructed to be similar but not identical to the one for the U.S. economy. The difference is reflected in the two terms representing the effect from the U.S.: (i) $z_{t-1}^i \in Z_{t-1}$ is an element of the vector of lagged aggregate variables of US from, $i = TERM, TED, SRET, HRET$, and hence should be expected with quarterly frequency data, and (ii) $\hat{u}_t^{i,US}$ is its corresponding residual term from (2), i.e. the unexpected effect obtained from the RS-VAR model of the US economy.⁸ Notice that in the linear case, Z_{t-1} and \hat{U}_t^{US} would be *orthogonal* to each other. The coefficient vectors of these two terms are respectively $\gamma_z(\omega_t) = [\gamma_{z1}(\omega_t), \gamma_{z2}(\omega_t), \gamma_{z3}(\omega_t)]$ and $\gamma_u(\omega_t) = [\gamma_{u1}(\omega_t), \gamma_{u2}(\omega_t), \gamma_{u3}(\omega_t)]$.⁹

⁷The idea is that we identify the state of the economy from an ex post point of view, and thus, not only the set of information up to period t , but also the *full set of information* is employed.

⁸Formally, it means that $U_t^{US} = Z_t - [\hat{C}^{US}(s_t) + \hat{A}^{US}(s_t) Z_{t-1}]$, where $\hat{C}^{US}(s_t)$, $\hat{A}^{US}(s_t)$ are the matrices of coefficients estimated from (2). Clearly, in the context of regime-switching models, U_t^{US} may compose of forecasting error conditioning on the regime persists between time t and $(t+1)$, or forecasting error due to a regime change, among other errors. Measurement in one regime can also spill-over to other regime. Given the data constraint, we cannot propose any feasible alternative, but only acknowledge the limitations. For related discussion, see Cosslett and Lee (1985), among others.

⁹An alternative formulation would be to include the whole vector of US variables. Thus, (4) will be replaced by $X_t = C^{HK}(w_t) + A^{HK}(w_t) X_{t-1} + \gamma_z(w_t) Z_{t-1} + \gamma_u(w_t) \hat{U}_t^{US} + U_t^{HK}$, where $\gamma_z(w_t)$ and $\gamma_u(w_t)$ are 3×3 matrices. However, this alternative formulation demands many more coefficients to be estimated at the same time. Given very limited time periods in our sample, this will lead to very imprecise estimates, if it converges at all. We therefore employ (4) to capture the dynamics for Hong Kong.

Again, the residual term is similarly defined,

$$U_t^{HK} = \Lambda^{HK}(\omega_t) (\Sigma^{HK})^{1/2} V_t^{HK}(\omega_t),$$

where where Σ^{HK} is a 3×3 diagonal matrix with diagonal elements $\sigma_{j,HK}^2$, $j = 1, \dots, 3$, $\Lambda^{HK}(\omega_t)$ is a 3×3 diagonal matrix with diagonal elements $\lambda_{j,HK}(\omega_t)$, $j = 1, \dots, 3$, and $V_t^{HK}(\omega_t)$ is a vector of standard normal distribution, $V_t^{HK}(\omega_t) \sim N(0, R^{HK}(\omega_t))$. Finally, the transition matrix of the Hong Kong economy is given by:

$$P^{HK} = \begin{pmatrix} P_{11}^{HK} & 1 - P_{22}^{HK} \\ 1 - P_{11}^{HK} & P_{22}^{HK} \end{pmatrix}.$$

Again, given that we assume the state of nature shifts between two regimes in both economies, i.e., $\omega_t \in W = \{1, 2\}$, we identify the economy most likely to be in state j if $\pi(\omega_t = j | \Omega_T) > 0.5$, $j = 1, 2$. Obviously, relative to the linear VAR approach (such as (1)), our two-step approach enables to (a) distinguish the impact of the expected U.S. variables versus the unexpected component on the H.K. variables, and (b) estimate the potentially regime-dependent responses of the H.K. economy to the U.S. variables. Since we do not know which model is a better description of the reality, we consider five specifications of empirical models for the Hong Kong economy, as outlined in Table 1. As a benchmark, Model A does not include any effect from the US, and Model B-E each includes a pair of variables representing the expected and unexpected effect of the US financial or housing market.

[Table 1 about here]

2.1 Data Sources

Our objective to understand the interactive dynamics between the housing market return and the stock market, among other variables have implications to our estimation strategy. Since the house price indices in both US and Hong Kong are available only in quarterly data, other variables originally available in monthly are transformed into quarterly, covering the period of 1984Q1 – 2009Q4. This period gives us the longest time series accessible to the authors with the *same and fixed nominal exchange rate* between the currencies of US and Hong Kong.

All of our data are obtained from public sources. We begin our description from the four variables employed by the US model economy, (2). We compute the real house returns ($HRET_t$) from the OFHEO housing price index, deflated by the GDP deflator. The OFHEO house price index is taken from the Office of Federal Housing Enterprise Oversight. Since housing price index is available only in quarterly data, the interest rates originally available in monthly are transformed into quarterly. For the term spread $TERM$, we follow Estrella and Trubin (2006) by choosing the spread between ten-year Treasury bond yield and three-month Treasury bill rate, and both are released by the Federal Reserve Board of Governors. As for the 3-month Treasury bill rate, we use the secondary market three-month rate expressed on a bond-equivalent basis.¹⁰ Estrella and Trubin (2006) argue that this spread provides an accurate and robust measure in predicting U.S. real activity over long periods of time. Finally, the TED spread (TED) is the difference between the 3-month Eurodollar deposit rate and the 3-month T-bill rate.

Hong Kong data are available from the Hong Kong government website.¹¹ All asset returns are taken to be the percentage of annualized return, defined as $100 \times (RET_t - RET_{t-4})$. We then deflate these returns by CPI to obtain their real returns.

2.2 Summary Statistics

Before a formal statistical analysis, it may be instructive to have an overview of the data series to be used. Details are provided in the appendix, and we only highlight a few regularities here. First, the *average stock returns* in U.S. and H.K. are *higher* than the average housing returns. Predictably, they are accompanied by *larger risk*: the standard deviations of stock returns in both countries are also larger than those of housing returns. Second, the volatilities of stock and housing returns in H.K. are very different from those in U.S.. For example, the standard deviations of stock and housing returns in U.S. are

¹⁰The 3-month secondary market T-bill rate provided by the Federal Reserve System is on a discount basis. We follow Estrella and Trubin (2006) by converting the three-month discount rate (r^d) to a bond-equivalent rate (r): $r = \frac{365 \times r^d / 100}{360 - 91 \times r^d / 100} \times 100$.

¹¹<http://www.gov.hk/en/residents/>.

17.519 and 3.373, respectively, while those in H.K. are 28.126 and 16.471, respectively. The standard scores (i.e. standard deviation relative to the means) of stock and housing returns in U.S. are 4.5071 and 2.4442, respectively, while those in H.K. are 3.5567 and 4.5715, respectively. Thus, in U.S., the stock return is more volatile than the housing return, while it is the other way in Hong Kong. Third, the U.S. term spread and TED spread show only negligible correlation, suggesting that these two spreads measure different types of risk. Finally, the correlation between stock and housing returns in H.K. (0.395) is slightly larger than that in U.S. during the same period (0.228).¹²

[Table 2 about here]

3 Baseline Results

While the detailed results of the linear VAR models are presented in the appendix, we summarize them here. (1) Both the point estimates of the coefficients and the overall performance (measured by $\ln L$ and AIC) are very similar across models. (2) In general, $\{a_{ij}\}$ (i.e. elements of A in (1)) tend to be *statistically insignificant* for $i \neq j$. Also, most of the $\{\rho_{ij}\}$ (i.e. off-diagonal elements of R in (1)) are also *statistically insignificant*. Thus, if we believe the linear VAR models to be a good approximation of the “true model”, we may be tempted to conclude that there are limited interactions between the U.S. economy and the Hong Kong asset returns and aggregate output. Clearly, this view may have very different policy implications than those commonly believed.

We now turn to the “hierarchical Markov regime-switching framework” proposed in this paper, represented by (2) and (4). We first estimate the Markov switching version of equation (2) for the U.S. economy. The estimated *regime 1* turns out to have significantly lower mean return and at the same time high volatility on asset. In other words, regime

¹²For more discussion on the Hong Kong housing market, see Leung, Cheung and Tang (2011), Leung and Tang (2011), among others.

1 is the “*high risk and low return*” regime. The transition probability matrix is estimated to be

$$P^{US} = \begin{pmatrix} P_{11}^{US} & 1 - P_{22}^{US} \\ 1 - P_{11}^{US} & P_{22}^{US} \end{pmatrix} = \begin{pmatrix} 0.747 & 0.075 \\ 0.253 & 0.925 \end{pmatrix}.$$

Note that the transition probability of regime US1 (0.747) is much smaller than that of regime US2 (0.925). Thus, regime US1 (“bear market”) is less persistence than regime US2 (“bull market”). By Figure 1, we can see that the estimated smoothed probabilities for regime 1 (indicated by shaded areas, accounting for 24% of total sample periods) are closely associated with low returns in stock and housing returns. (See the appendix for more details).

[Figure 1 about here]

Given the estimates of the U.S. economy, we proceed to study how the U.S. financial and housing markets affects the housing and stock returns in Hong Kong. To save space, we provide only the summary of the results here. The details of the estimation results are reported in the appendix.

Table 3 reports the identified regime 1 (HK1) for H.K. under those five models. The time periods identified to be regime HK1 for these models are very similar. They are mainly two periods of time: 1984Q2-1987Q3, and 1998Q1-1998Q3. The former is associated with the U.S. S&L crisis and 1987 stock market crash, and the latter is closely related to the Asian financial crisis. The estimated regime-switching models seem to be able to capture major turbulences in Hong Kong.¹³

Table 4 summarizes the AICs under different model specifications. In particular, we consider the cases when (2) is a linear VAR and compare the cases when (2) is allowed to be a regime-switching model. It is clear that for all models allowing for regime switching performs better than linear specification in terms of AIC.

¹³Notice that the *Post Global Financial Crisis* period (PGFC, i.e. the period after the bankruptcy of the Lehman Brothers) is not identified as regime 1. A possible reason is that while the stock market and the GDP drops significantly during the period, the housing market rebounds quickly and significantly. Since the computer program identify a regime change for *the whole system*, the PGFC is not identified as a scenario of regime 1. For more discussion, see Leung and Tang (2011).

[Table 3, 4 about here]

Table 5 summarizes the impacts of expected and unexpected U.S. financial and housing markets on H.K. asset returns and GDP growth. Overall, our “two step estimation procedure” *suggests a tight connection* between the U.S. financial market variables and the Hong Kong asset returns and macro-economy. First, the *expected changes* in U.S. financial and housing markets have *almost no effect* on the H.K. economy. This result is consistent to the rational expectation hypothesis that agents (and hence the market) will “factor-in” all expected changes. Second, the *unexpected shocks* of U.S. financial and housing markets are more likely to *affect the asset markets than GDP* in H.K.. Notice that even when the equation (4) is estimated as a single-regime regression model, the coefficients of several un-expected components of U.S. are still statistically significant.¹⁴ This is in sharp contrast to the linear VAR models when the “expected” and “unexpected” components are combined together and they were found to have insignificant impact to the H.K. asset returns and GDP. Moreover, if we estimate (4) as a regime-switching model, we find that the impact of unexpected shocks from U.S. tends to occur in regime HK2 (the “normal times”, with relative higher asset returns and lower volatility).¹⁵

[Table 5 about here]

Third, the U.S. Term spread, either expected or unexpected, shows no effect on the asset returns or GDP in H.K.. Finally, the unexpected shock of stock returns (Model D)

¹⁴As it is shown in Chong, Lam and Yan (2011), Chong and Yan (2011), among others, the standard errors under a two-step procedure tend to be larger than the OLS counterparts. Thus, while our model yields unbiased estimates of the coefficients, we tend to under-evaluate the statistical significance of those coefficients in the regime-switching models. Since correcting for the standard error estimation is very difficult in a hierarchical regime-switching VAR context, and the coefficients that we identify as statistically significant would only improve should the correction is made, we only acknowledge this issue and proceed.

¹⁵A possible reason why the parameters in regime HK1 are mostly insignificant is that we only have 16 observations in regime HK1 (taking model A as an example), but we have at least 16 parameters to be estimated. The insufficient observations may cause the large standard errors, as we can observe that the standard errors of estimated parameter are larger in regime HK1 than in regime HK2 in these models.

in U.S. appears to have the most significant impact on H.K. asset returns and GDP, followed by the TED spread (Model C), and then the housing returns (Model E). An usual explanation of cross-country stock return co-movements is the re-balancing of portfolio of international investors, which can be “large” and their actions can influence the market prices. On the other hand, this paper employs quarterly data and hence the “re-balancing portfolio” may be less important. Rather, it may be that the stock return does contain some information about future economic growth of the United States. Similarly, an unexpected change in the TED spread may signal a change in the credit market condition. Since “money” can move across borders, a contraction in the U.S. credit market is soon translated into a contraction in the H.K. credit market, which will affect both the asset prices and the aggregate output. It can also affect the subsequent economic growth of the United States. Since U.S. is an important international trade partner of Hong Kong, an alternation of the U.S. economic growth would be translated into a change in future export growth in Hong Kong, and hence affect the asset prices. This explanation is also consistent with some earlier research that international trade plays an important role in the economic growth of Hong Kong, and hence the asset prices.¹⁶

In addition, Table 5 also suggests that *in general*, it is during the regime 2, i.e. the “*normal time*” that the U.S. financial market variables have a *larger impact* on the H.K. asset returns and aggregate output (in terms of recording statistical significance of the U.S. variables). Now recall that when linear VAR models are regressed, most of the off-diagonal elements of A and R in (1) are statistically insignificant, and one may be tempted to conclude that the U.S. financial variables do not have that much influence on the H.K. counterpart based on those VAR. Now when we compare that with our “hierarchical regime-switching model,” we find that it is the unexpected component of the U.S. variables which have impact on the H.K. variables. Furthermore, most of the impacts seem to concentrate in regime 2 (the “normal times”). Thus, when we regress the linear VAR models, we effectively pool the expected and unexpected parts, as well as the “normal times” and “crisis times” together. Since the unexpected part is random, and

¹⁶For more on the interbank market channel to the real economy, see Davis (2010), Gertler and Kiyotaki (2010), among others. For the trade-growth channel in Hong Kong, see Chou and Wong (2001), Ho and Wong (2008), among others.

the switching across regimes is also random, it might result in “*insignificant* statistical relations” between the U.S. financial variables and H.K. counterparts. Needless to say, this is only a hypothetical explanation and due to the data limitation, we can only leave the issue to the future research.

3.1 In-Sample Forecasting

The previous section shows that the linear VAR models and our “hierarchical” regime-switching models tend to suggest very different relationships between the U.S. financial market and the Hong Kong counterparts. It is natural to ask which type of models is more reliable. In the econometrics literature, many measures have been suggested. Given the limitations of our dataset and the journal space, we focus on the comparison of in-sample forecasting. In particular, we examine the in-sample one-step-ahead forecasting of $X_t = [SRET, HRET, GDP]'$, which includes stock returns, housing returns, and real GDP growth of the Hong Kong economy. Given the specification of H.K. in (4), the one-step-ahead forecast for $x_t \in X_t$ is given by

$$\hat{x}_{t+1|t} = \sum_{\omega_{t+1}=1}^2 P(\omega_{t+1} | I_t) \left[C^{HK}(\omega_{t+1}) + A^{HK}(\omega_{t+1}) X_t + \gamma_z(\omega_{t+1}) z_t^i + \gamma_u(\omega_{t+1}) \hat{u}_{t+1}^{i,US} \right], \quad (5)$$

where $\hat{u}_{t+1}^{i,US}$ is i -th element of the residual term at $t+1$ obtained from U.S. model (2), and $i = TERM, TED, SRET, HRET$.

To evaluate the performances of in-sample forecasts of these models and different specifications, we compute two widely-used measures, Root Mean Square Errors (*RMSE*) and Mean Absolute Errors (*MAE*), which are defined respectively as

$$RMSE(1) = \left[\frac{1}{T-1} \sum_{t=1}^{T-1} (x_{t+1} - \hat{x}_{t+1|t})^2 \right]^{1/2},$$

$$MAE(1) = \frac{1}{T-1} \sum_{t=1}^{T-1} |x_{t+1} - \hat{x}_{t+1|t}|,$$

where $\hat{x}_{t+1|t} \in \hat{X}_{t+1|t}$. Clearly, the RMSE tends to penalize “big mistakes” more than the MAE. Due to the data limitation, we restrict our attention to one-step in-sample forecast.

The results are reported in Table 6a-6c, corresponding to the forecasts of stock returns, housing returns, and real GDP growth, respectively, of Hong Kong. Several interesting observations are in order.

[Table 6a-6c, Figure 2 about here]

First, except the RMSE comparison for model A, for all models A-E the specification of regime-switching performs better than that of single-regime does in in-sample forecasting. Now, recall the result in Table 5 that U.S. stock returns (Model D) and TED spread (Model C) are the two most significant factors affecting the H.K. asset returns and GDP. However, these two variables do not perform well in forecasting. Among these five models, Model B with regime switching has the lowest MAE and RMSE (except for the GDP forecasting) all around, which means that U.S. Term spread stands out to be the best predictor for the H.K. asset returns and GDP.¹⁷

We also report the forecasting performance of the 7-variate linear VAR models in the last three row of Table 6a-6c to facilitate the comparison. The predictive performance of the “naive” VAR models and the restricted VAR model are as least comparable to quite a few regime switching models in terms of either MAE or RMSE. For example, in forecasting H.K. stock returns (Table 7a), the restricted VAR model, VAR(7)_R, performs better than all single regime models A-E and regime switching model C in terms of MAE. Moreover, the “naive” VAR models, VAR(7)_1 and VAR(7)_2, performs better than all single regime models A-E and regime switching models A, C and D, when evaluated in terms of RMSE. *Nevertheless*, Model B (with U.S. Term spread) with regime switching still outperforms all

¹⁷It should be noticed that while un-expected stock return has the best explanatory power individually, model D (which contains the stock return of U.S.) needs not provide the best forecasting. Notice that our measures of forecasting performance is MAE and RMSE, which is in a sense a weighted average of the forecast errors in different periods. Thus, it is possible that model D may have some predicted some periods really badly that will bring down its “average performance.” In addition, when we compare the forecasting performance across models, we include both the expected and un-expected part of the financial asset return or housing return, and hence may give a different result than the previous section which focuses on the explanatory of the explanatory power of individual variable.

7-variate linear VAR models in forecasting H.K. stock returns, housing returns, and GDP growth, except for the forecasting of GDP growth when evaluated in terms of RMSE. To provide a visualization, Figure 2 shows the estimated smoothed probabilities for regime 1 (indicated by shaded areas, accounting for 14.6% of total sample periods) of Model B. The matrix of the transition probability is

$$P = \begin{bmatrix} 0.9166 & 0.0207 \\ 0.0834 & 0.9793 \end{bmatrix}.$$

Notice that both regimes are very persistent, which will exhibit “short run predictability”, as in the case of the U.S. (see Chang et al., 2011).¹⁸

3.2 Impulse Responses

To gain more intuitions of the predictions of alternative models, this subsection presents the impulse response analysis of the *unexpected* changes in term spread, TED spread, stock return returns, and housing returns of the U.S. respectively on the H.K. variables (stock returns, housing returns, and the GDP). Given the discussion above, we will focus on the regime-switching Model B and the linear restricted model VAR(7)_R. To implement the impulse response function in our two-step estimation approach, we follow the approach of Garcia and Schaller (2002).¹⁹ The results are plotted in Figure 3-6. The first column is the impulse response for the restricted linear model VAR(7)_R, while the remaining columns are the single-regime, regime 1, and regime 2 respectively for Model B.²⁰

Some interesting observations are as follows. First, Figure 3-6 show that an unexpected rise in term spread, a decline in TED spread, or a rise in stock returns in U.S. signals a booming economy, which spills over to Hong Kong, resulting a rise in stock returns, housing returns, and GDP. However, an unexpected rise in U.S. housing returns does not clearly generate a positive spillover effect on Hong Kong economy.

¹⁸The plots of other models are available upon request.

¹⁹Recall that for VAR(7)_R, only the U.S. variables would affect the HK variables but not vice versa. Similarly, in the regime-switching model B, the influence of US variables to HK variables is uni-directional.

²⁰We also conduct impulse responses of *expected* changes in US aggregate variables on stock returns, housing returns, and the GDP of HK for Model B and the linear restricted model VAR(7)_R. They are available upon request.

Second, the impulse responses of Model B, either single-regime or regime-switching, are less persistent than those of the restricted linear model VAR(7)_R, except that the impulse responses of regime 1 (bust regime) in Model B appear to be divergent given any unexpected shock. This may be due to estimation imprecision, as there may not be enough data points to be identified as “regime 1.”

Third, among these shocks from the U.S., it seems that a stock return shock exerts the largest spillover effect on the Hong Kong economy. Moreover, Hong Kong’s stock return appear to be most sensitive to the spillover effect, followed by housing returns and then GDP.

[Figure 3-6 about here]

3.3 Robustness Check

TO BE CHANGED

On top of the MAE and RMSE statistics we have just calculated, we also adopt the Diebold-Mariano (1995) test to assess the “relative performance” of different models. The test aims to test the null hypothesis of equality of expected forecast accuracy, in terms of a loss function, against the alternative of different forecasting ability across models.

Let $\{x_t\}$ denote the series to be forecast and let $x_{t+h|t}^i$ be the model i ’s h -step forecast of x_{t+h} based on the information at time t , $h > 0$. Let $e_{t+h|t}^i$ be the forecasting error of model i , $e_{t+h|t}^i \equiv x_{t+h} - x_{t+h|t}^i$. The Diebold-Mariano (henceforth *DM*) test is based on the loss differential,

$$d_t = L(e_{t+h|t}^i) - L(e_{t+h|t}^j), \quad (6)$$

where $L(\cdot)$ is some loss function. Clearly, if the two models have roughly the same predictive power, the expectation of the loss differential will be zero, $E[d_t] = 0$. If, instead, model i predicts better (*worse*) than model j , the expected value of the loss differential will be significantly negative (*positive*).²¹ Limited by data availability, we here focus on the case when $h = 1$.

²¹The DM statistics will depend \bar{d} , which is an average value of d_t , for different period t , and the co-variance of d_t and d_{t-k} , $k = 1, 2, 3, \dots$ As shown by Zivot (2004), other things being equal, if model i which consistently over-predict in some sub-period and then consistently under-predict in other sub-

The results are reported in Table 7a-7c. Since DM test is conducted pairwise, we use Model B (with U.S. Term spread) as the benchmark to be compared with, i.e., the model i in the statistic (6). Therefore, if Model B performs better, the value of D-M statistic in the tables will be significantly negative.

In the previous sub-section, Model B is found to have the best forecasting performance in terms of MAE and RMSE. However, under D-M statistics Model B performs significantly better in prediction than only Model D in stock returns and (partly) GDP growth. Even though almost all of the statistics are negative in these three tables, they are mostly insignificant. Therefore, the significance in the forecasting performance of Model B over other models is not evident in terms of the DM statistics.

The inability for the Model B to provide superior prediction than other models may simply reflect a typical dilemma of empirical research in Asian countries. Typically, Asian countries have much shorter time series data than the U.S. and European countries. If large number of variables is chosen in the econometric model, the model would need to compromise in the functional form, and hence may mask the potential non-linear relationship among different variables. If instead a flexible functional form is selected, the number of parameters typically increase exponentially with the number of variables. As a result, the number of variables that can be included in the econometric model would be limited. As a matter of fact, this is why we have Model B~E, instead of putting all U.S. variables into the same model. The fact that no “clear winner” is identified among different models may suggest that different variable may indeed carry some independent and comparable important information and hence our approach of taking each variable in one model may not be able to generate the ideal result. Unfortunately, other than waiting for more data to come in the future years, it seems that this dilemma cannot be easily solved with the traditional approach. Future research may explore alternative methodology, such as the Bayesian approach. Another possibility is to follow the unobservable factor approach (e.g. Stock and Watson, 2002). Better prediction may be obtained at the price of an increased difficulty of getting straightforward interpretation for the econometric results. Therefore,

period, it is more likely to get not only a lower value of d_t in different period t , but also a higher value of co-variance d_t and d_{t-k} , $k = 1, 2, 3, \dots$. As a result, model i is would be classified as under-perform the alternative model. See Zivot (2004) for more details.

future research may want to compare the “gains” versus “losses” over different approaches as well.

[Table 7 about here]

4 Concluding Remarks

Due to the increasing importance of interdependence across economies during the last several decades, via the linkage in trade and financial integration, the potential significance of international transmission of fluctuations in economic activity and financial markets has gained more and more attention. If a shock originated from one economy transmitting to another, the latter may try to counteract the potential impact of the foreign shock using its monetary policy. However, the reaction in monetary policy will tend to mitigate or even neutralize the effect of international transmission of an exogenous shock.

In order to precisely measure the effect of international transmission of an exogenous shock, we take the U.S.-Hong Kong relationship as a case study. The reasons are two-fold. First, due to the dominant role of the U.S. economy in international trade and international financial transactions, changes in both real and financial sectors in the U.S. have an important influence on the rest of the world. Second, by design, the currency board of Hong Kong is refrained from conducting monetary policy, and thus there will be no feedback effects in response to exogenous shocks originated from foreign countries. Therefore, the case of Hong Kong provides a “natural experiment” to study the international transmission of changes in both real and financial sectors in the U.S.

Our linear specifications suggest that the U.S. financial asset returns and housing returns are almost *disconnected* to the Hong Kong counterparts. This seems to be very counter-intuitive, as Hong Kong currency is linked to the U.S. dollars and given the large volume of goods and service trade between Hong Kong and U.S. On the other hand, our Hierarchical Markov Regime Switching VAR model (HMRS-VAR) suggests that unexpected change in U.S. stock return will have a significant impact to the H.K. asset returns as well as GDP. As a whole, the model which includes the U.S. term spread

can provide the best in-sample one-quarter-ahead forecast in both H.K. asset returns and GDP. Our HMRS-VAR further suggests that it is during the “normal times” that the U.S. has a larger impact on Hong Kong.

Clearly, there are much room for improvement. Methodologically, for instance, future research can consider to introduce the “China factor,” time-varying transition probability, time-varying variance-covariance structure, etc. into the empirical model.²² Future research can also employ H.K. data to test among competing theories.²³ Those research efforts would definitely enrich our understanding of the international linkages of the asset markets.

²²Among others, see Bai and Wang (2011), Engle (2009), Filardo (1994), He et al (2009), for related studies.

²³For instance, one can test whether the conventional “rational models” or the behavioral models” will gain support from the H.K. data. Among others, see Leung and Tsang (2011a, b) for related studies.

References

- [1] Bai, J. and P. Wang, 2011, Restricted Markov Switching Model and Its Application in Economic Time Series Analysis, forthcoming in *Journal of Applied Econometrics*.
- [2] Benigno, P., 2002. A Simple Approach to International Monetary Policy Coordination. *Journal of International Economics*, 57, 177-196.
- [3] Benigno, G., Benigno, P., 2006. Designing Targeting Rules for International Monetary Policy Cooperation. *Journal of Monetary Economics*, 53, 473–506.
- [4] Bernanke, B., 2007, Globalization and Monetary Policy, available at <http://www.federalreserve.gov/newsevents/speech/Bernanke20070302a.htm>.
- [5] Brunnermeier, M. K., Pedersen, L.H., 2009. Market Liquidity and Funding Liquidity. *Review of Financial Studies* 22(6), 2201-2238.
- [6] Canzoneri, M. B., Cumby, R. E., Diba, B. T., 2005. The Need for International Policy Coordination: What's Old, What's New, What's Yet to Come. *Journal of International Economics*, 66, 363– 384.
- [7] Chang, K. L.; N. K. Chen and C. K. Y. Leung, 2010, Would some model please give me some hints? In search of some stylized facts of the Monetary Policy and Asset Return Dynamics, National Taiwan University, mimeo.
- [8] Chang, K. L.; N. K. Chen and C. K. Y. Leung, 2011a, Monetary Policy, Term Structure and Real Estate Return: Comparing REIT, housing and stock, *Journal of Real Estate Finance and Economics*, 43, 221-257.
- [9] Chang, K. L.; N. K. Chen and C. K. Y. Leung, 2011b, The Dynamics of Housing Returns in Singapore: How Important are the International Transmission Mechanisms?, forthcoming in *Regional Science and Urban Economics*.
- [10] Chen, N. K. and C. K. Y. Leung, 2008, Asset price spillover, collateral and crises: with an application to property market policy, *Journal of Real Estate Finance and Economics*, 37, 351-385.
- [11] Chong, T. T. L., T. H. Lam and I. K. M. Yan, 2011, Is the Chinese Stock Market Really Inefficient, City University of Hong Kong, mimeo.
- [12] Chong, T. T. L., and I. K. M. Yan, 2011, Threshold Models with Multiple Threshold Variables and the Prediction of Financial Crises, City University of Hong Kong, mimeo.
- [13] Chou, W. L. and K. Y. Wong, 2001, Economic growth and international trade: the case of Hong Kong, *Pacific Economic Review*, 6, 313-329.
- [14] Corsetti, G., Pesenti, P., 2001. Welfare and Macroeconomic Interdependence. *Quarterly Journal of Economics*, 116, 421–45.
- [15] Corsetti, G., Pesenti, P., 2005. International Dimensions of Optimal Monetary Policy. *Journal of Monetary Economics*, 52(2), 281-305.

- [16] Corsetti, G., Pesenti, P., Roubini, N., 1999. What Cause the Asian currency and financial crisis? *Japan and the World Economy* 11, 305-73.
- [17] Cosslett, S. and L. F. Lee, 1985, Serial correlation in latent discrete variable models, *Journal of Econometrics*, 27, 79-97.
- [18] Davis, S., 2010, *The Adverse Feedback Loop and the Real Effects of Financial Sector Uncertainty*, Vanderbilt University, mimeo.
- [19] Demyanyk, Y.S., Van Hemert, O., 2009. Understanding the Subprime Mortgage Crisis. Forthcoming in *Review of Financial Studies*.
- [20] Diebold, F. and R. Mariano, 1995, Comparing predictive accuracy, *Journal of Business & Economic Statistics*, 13, 253-263.
- [21] Engle, R., 2009, *Anticipating correlations: a new paradigm for risk management*, Princeton: Princeton University Press.
- [22] Estrella, A., 2005, Why does the yield curve predict output and inflation?, *Economic Journal* 115, 722-44.
- [23] Estrella, A. and G. Hardouvelis, 1991, The term structure as a predictor of real economic activity, *Journal of Finance* 46, 555-76.
- [24] Estrella, A. and F. Mishkin, 1997, The predictive power of the term structure of interest rates in Europe and the United States: implications for the European Central Bank, *European Economic Review* 41, 1375-1401.
- [25] Estrella, A. and M. R. Trubin, 2006, The yield curve as a leading indicator: some practical issues, *Current Issues in Economics and Finance* 12, Federal Reserve Bank of New York.
- [26] Filardo, A., 1994, Business-Cycle Phases and Their Transitional Dynamics, *Journal of Business & Economic Statistics*, 12, 299-308.
- [27] Garcia, R. and H. Schaller, 2002, Are the effects of monetary policy asymmetric, *Economic Inquiry*, 40, 102-119.
- [28] Gertler, M. and N. Kiyotaki, 2010, Financial intermediation and credit policy in business cycle analysis, forthcoming in *Handbook of Monetary Economics*, vol. 3, edited by M. Woodford, New York: Elsevier.
- [29] Gorton, G.B., 2007. *The Panic of 2007*. Working paper.
- [30] Hamilton, J., 1994, *Time series analysis*, Princeton: Princeton University Press.
- [31] He, D., Z. Zhang and H. Wang, 2009, Hong Kong's financial market interactions with the US and Mainland China in crisis and tranquil times, Hong Kong Monetary Authority, mimeo.
- [32] Ho, L. S. and G. Wong, 2008, Nexus between housing and the macroeconomy: the Hong Kong case, *Pacific Economic Review*, 13, 223-239.
- [33] Kaminsky, G.L., Reinhart, C.M., 2000. On Crises, Contagion, and Confusion. *Journal of International Economics* 51, 145-168.

- [34] Leung, C. K. Y., 2007, Equilibrium correlations of asset price and return,” *Journal of Real Estate Finance and Economics* 34, 233-256.
- [35] Leung, C. K. Y., P. W. Y. Cheung and E. C. H. Tang, 2011, Financial Crisis and the Co-movements of Housing Sub-markets: Do relationships change after a crisis?, forthcoming in *International Real Estate Review*.
- [36] Leung, C. K. Y. and E. C. H. Tang, 2011, Comparing two financial crises: the case of Hong Kong Real Estate Markets, forthcoming in ”Global Housing Markets: Crises, Institutions and Policies,” eds. by Ashok Bardhan, Robert Edelstein and Cynthia Kroll, John Wiley & Sons.
- [37] Leung, C. K. Y. and W. L. Teo, 2009, The Wall Street concerns might be right: equilibrium correlations of asset price do change with monetary policy, paper presented at the Asian Real Estate Society meeting.
- [38] Leung, T. C. and K. P. Tsang, 2011a, Anchoring and Loss Aversion in the Housing Market: Implications on Price Dynamics, Chinese University of Hong Kong, mimeo.
- [39] Leung, T. C. and K. P. Tsang, 2011b, Can Anchoring and Loss Aversion Explain the Predictability in the Housing Market? forthcoming in the *Pacific Economic Review*.
- [40] Lubik, T., and F. Schorfheide, 2003, Computing sunspot equilibria in linear rational expectations models, *Journal of Economic Dynamics & Control* 28, 273–285.
- [41] Lubik, T., and F. Schorfheide, 2005, A Bayesian Look at New Open Economy Macroeconomics, *NBER Macroeconomics Annual*, 313-366.
- [42] Maheu, J. and T. McCurdy, 2000, Identifying bull and bear markets in stock returns. *Journal of Business and Economic Statistics*, 18, 100–112.
- [43] Obstfeld, M., Rogoff, K., 2002. Global Implications of Self-Oriented National Monetary Policy Rules. *Quarterly Journal of Economics*, 117, 503–535.
- [44] Peek, J., Rosengren, E.S., 2000. Collateral Damage: Effects of the Japanese Bank Crisis on Real Activity in the United States. *American Economic Review* 90, 30-45.
- [45] Plosser, C. and K. G. Rouwenhorst, 1994, International term structures and real economic growth, *Journal of Monetary Economics* 33, 133-155.
- [46] Radelet, S., Sachs, J., 1998. The East Asian Financial Crisis: Diagnosis, Remedies, Prospects. *Brookings Papers on Economic Activity*, 1-74.
- [47] Sims, C., 1980, Macroeconomics and reality, *Econometrica*, 48, 1-48.
- [48] Stock, J., and M. Watson, 1989, New Indexes of Coincident and Leading Indicators, In *NBER Macroeconomic Annual* 4, ed. Olivier Blanchard and Stanley Fischer, 351-394.
- [49] Stock, J. and M. Watson, 2002, Forecasting Using Principal Components From a Large Number of Predictors, *Journal of American Statistical Association*, 97(260), 1167-1179.
- [50] Taylor, J., 2009. The Financial Crisis and the Policy Responses: An Empirical Analysis of What Went Wrong. Working paper.

[51] U.S. Congress (Joint Economic Committee), 2000, International dimensions to U.S. monetary policy, available at <http://www.house.gov/jec/fed/intern.pdf>.

Table 1 Model Specification

Model	Specification
A	Stock Return, Housing Return, GDP Growth
B	Stock Return, Housing Return, GDP Growth + Expected and Unexpected Term Spread (USA)
C	Stock Return, Housing Return, GDP Growth + Expected and Unexpected TED Spread (USA)
D	Stock Return, Housing Return, GDP Growth + Expected and Unexpected Stock Return (USA)
E	Stock Return, Housing Return, GDP Growth + Expected and Unexpected Housing Return (USA)
Linear VAR (VAR(7)_1)	term spread (US), TED spread (US), stock returns (US), housing returns (US), stock returns (HK), housing returns (HK), GDP growth (HK).
Linear VAR (VAR(7)_2)	term spread (US), TED spread (US), stock returns (US), housing returns (US), stock returns (HK), GDP growth (HK), housing returns (HK)
Restricted VAR (VAR(7)_R)	term spread (US), TED spread (US), stock returns (US), housing returns (US), stock returns (HK), housing returns (HK), GDP growth (HK) (with additional restriction on parameters)

Table 2 Summary Statistics for US and HK data (1984Q1-2009Q4)
(only standard deviations are reported)

	U.S. variables	H.K. variables
Stock Return	17.519	28.126
Housing Return	3.373	16.471
Term Spread	1.173	/
TED Spread	0.497	/
GDP growth	/	4.691

Table 3 Identification of Regimes for HK Under Different Models

Model	Periods Identified to be Regime HK1
A	1984Q2-1987Q2 1998Q1-1998Q3
B	1984Q2-1987Q1 1998Q1-1998Q3
C	1984Q2-1987Q3 1998Q1-1998Q3 2002Q3-2003Q2
D	1984Q2-1987Q1 1998Q1-1998Q3
E	1984Q2-1987Q2 1992Q3-1993Q1 1998Q1-1998Q3

Table 4 AICs Under Different Model Specifications

Model	USA under single regime		USA under regime switching	
	Single-Regime	Regime Switching	Single-Regime	Regime Switching
A	20.599	19.971	20.599	19.971
B	20.654	19.823	20.666	19.878
C	20.591	20.011	20.627	20.054
D	20.019	19.491	20.074	19.514
E	20.626	20.007	20.608	20.028

Table 5 The Impacts of Expected and Unexpected US Financial and Housing Markets on HK Economy

USA Variables		Stock Return (see parameters γ_{z1} and γ_{u1})			Housing Return (see parameters γ_{z2} and γ_{u2})			GDP Growth (see parameters γ_{z3} and γ_{u3})		
		Single regime	regime HK1	regime HK2	single regime	regime HK1	regime HK2	single regime	regime HK1	regime HK2
Term Spread	z_{t-1}	No (1.735)	No (16.190)	No (0.284)	No (1.042)	No (1.381)	No (0.493)	No (0.115)	No (1.566)	No (0.234)
	\hat{u}_t	No (1.400)	No (9.838)	No (-2.335)	No (2.504)	No (-2.289)	No (2.118)	No (0.746)	No (5.216)	No (0.230)
TED spread	z_{t-1}	No (-4.679)	No (7.311)	No (-11.911)	No (0.093)	No (-3.945)	No (-1.121)	No (-0.687)	No (0.214)	Yes (-0.954**)
	\hat{u}_t	Yes (-16.886**)	No (-11.222)	Yes (-18.088*)	Yes (-6.795*)	No (-7.418)	Yes (-6.526*)	No (-0.670)	No (3.119)	No (-1.083)
Stock return	z_{t-1}	No (0.006)	No (-0.317)	No (0.179)	Yes (-0.128**)	No (0.022)	No (-0.006)	No (0.000)	No (-0.129)	No (0.003)
	\hat{u}_t	Yes (1.496***)	No (1.156)	Yes (1.434***)	Yes (0.196**)	No (0.299)	Yes (0.174*)	No (0.025)	No (-0.372)	Yes (0.042*)
Housing return	z_{t-1}	No (0.324)	No (-0.140)	No (0.660)	No (-0.239)	No (0.714)	No (-0.058)	No (0.124)	No (0.279)	No (0.114)
	\hat{u}_t	No (-2.171)	No (-3.838)	No (-0.980)	Yes (-1.688**)	No (-0.820)	Yes (-1.336*)	No (-0.076)	No (1.263)	No (-0.264)

Note: Values in parentheses are parameter estimates.

Table 6a In-sample one-step-ahead predictions on HK Stock Return under different model specifications (Assume that US model is regime-switching)

Model	MAE		RMSE	
	Singe-Regime	Regime Switching	Singe-Regime	Regime Switching
A	15.5610	14.8088	20.9376	21.0821
B	15.4734	14.5167	20.8072	20.5085
C	16.2750	15.5045	21.2916	21.6919
D	19.7363	18.3100	26.2061	24.7653
E	15.8788	14.7920	21.0845	20.3599
Linear VAR (VAR(7)_1)	15.3537	/	20.7185	/
Linear VAR (VAR(7)_2)	15.3540	/	20.7185	/
Restricted VAR (VAR(7)_R)	15.3312	/	20.9177	/

Table 6b In-sample one-step-ahead predictions on HK Housing Return under different model specifications (Assume that US model is regime-switching)

Model	MAE		RMSE	
	Singe-Regime	Regime Switching	Singe-Regime	Regime Switching
A	5.6555	5.5301	7.4881	7.2625
B	5.6510	5.4592	7.3703	7.1103
C	5.8173	5.6473	7.5305	7.2955
D	5.8450	5.5956	7.5364	7.4099
E	5.9623	5.6849	7.6768	7.3289
Linear VAR (VAR(7)_1)	5.6509	/	7.2144	/
Linear VAR (VAR(7)_2)	5.6509	/	7.2144	/
Restricted VAR (VAR(7)_R)	5.6995	/	7.2495	/

Table 6c In-sample one-step-ahead predictions on HK GDP Growth under different model specifications (Assume that US model is regime-switching)

Model	MAE		RMSE	
	Singe-Regime	Regime Switching	Singe-Regime	Regime Switching
A	1.6936	1.6357	2.3893	2.2737
B	1.6603	1.5545	2.4057	2.3722
C	1.6946	1.6515	2.3756	2.3151
D	1.7368	1.8090	2.4064	2.5087
E	1.6705	1.6478	2.3486	2.2114
Linear VAR (VAR(7)_1)	1.6593	/	2.3351	/
Linear VAR (VAR(7)_2)	1.6593	/	2.3351	/
Restricted VAR (VAR(7)_R)	1.6769	/	2.3426	/

Table 7a Diebold and Mariano (1995) Statistics for HK Stock Return
(Model B with regime switching as the benchmark)

Model	MAE		MSE	
	Singe-Regime	Regime Switching	Singe-Regime	Regime Switching
A	-1.2238	-0.6469	-0.2537	-0.6277
B	-1.1538	/	-0.1789	/
C	-1.8954*	-1.3788	-0.4638	-0.9036
D	-4.0152***	-3.4486***	-2.4884**	-2.7355***
E	-1.5264	-0.5716	-0.3407	0.1858
Linear VAR (VAR(7)_1)	-0.9259	/	-0.1203	/
Linear VAR (VAR(7)_2)	-0.9263	/	-0.1203	/
Restricted VAR (VAR(7)_R)	-0.9631	/	-0.2584	/

Note: * Significant at 10% level of significance; ** Significant at 5% level of significance; *** Significant at 1% level of significance.

Table 7b Diebold and Mariano (1995) statistics for HK Housing Return
(Model B with regime switching as the benchmark)

Model	MAE		MSE	
	Singe-Regime	Regime Switching	Singe-Regime	Regime Switching
A	-0.6212	-0.6158	-0.8723	-1.1863
B	-0.6542	/	-0.6372	/
C	-1.1180	-0.9886	-0.9612	-0.8259
D	-1.1525	-0.6916	-0.9219	-1.3988
E	-1.5657	-1.1943	-1.3750	-1.1057
Linear VAR (VAR(7)_1)	-0.7213	/	-0.2778	/
Linear VAR (VAR(7)_2)	-0.7214	/	-0.2778	/
Restricted VAR (VAR(7)_R)	-0.9172	/	-0.3839	/

Note: * Significant at 10% level of significance; ** Significant at 5% level of significance; *** Significant at 1% level of significance.

Table 7c Diebold and Mariano (1995) statistics for HK GDP Growth
(Model B with regime switching as the benchmark)

Model	MAE		MSE	
	Singe-Regime	Regime Switching	Singe-Regime	Regime Switching
A	-1.1908	-1.1242	-0.0922	0.7306
B	-0.9594	/	-0.1945	/
C	-1.1757	-1.0488	-0.0185	0.3387
D	-1.5512	-2.5806***	-0.1843	-0.8787
E	-0.9419	-0.9401	0.1240	0.8950
Linear VAR (VAR(7)_1)	-0.8569	/	0.1967	/
Linear VAR (VAR(7)_2)	-0.8570	/	0.1967	/
Restricted VAR (VAR(7)_R)	-0.9689	/	0.1554	/

Note: * Significant at 10% level of significance; ** Significant at 5% level of significance; *** Significant at 1% level of significance.

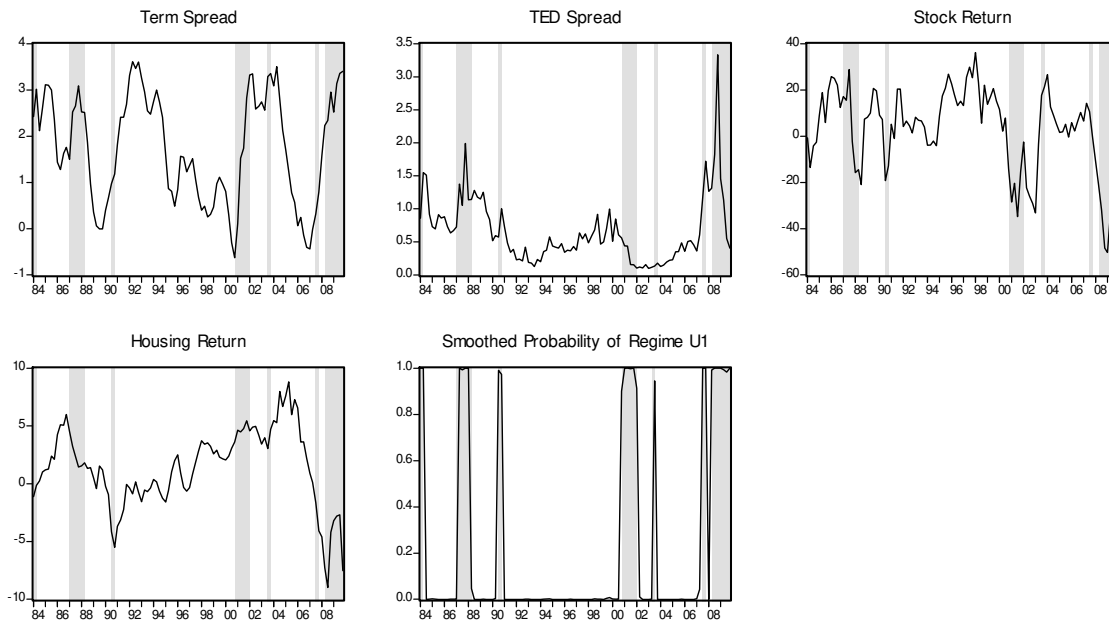


Figure 1 The Data of US and the smoothed probabilities of regime U1
 Note: Shaded areas indicate the periods of regime U1

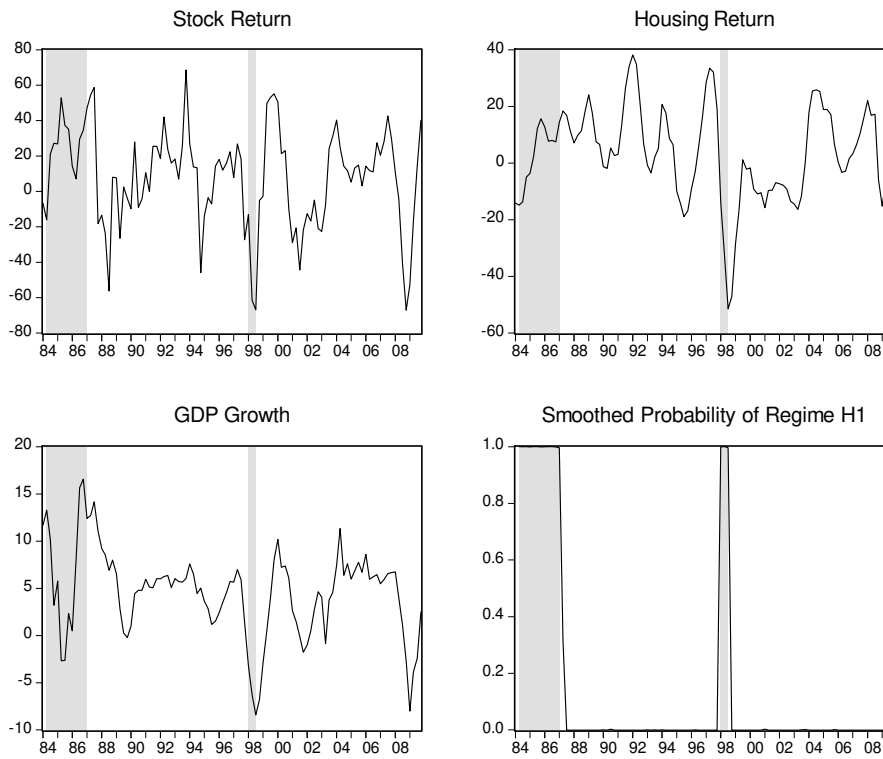
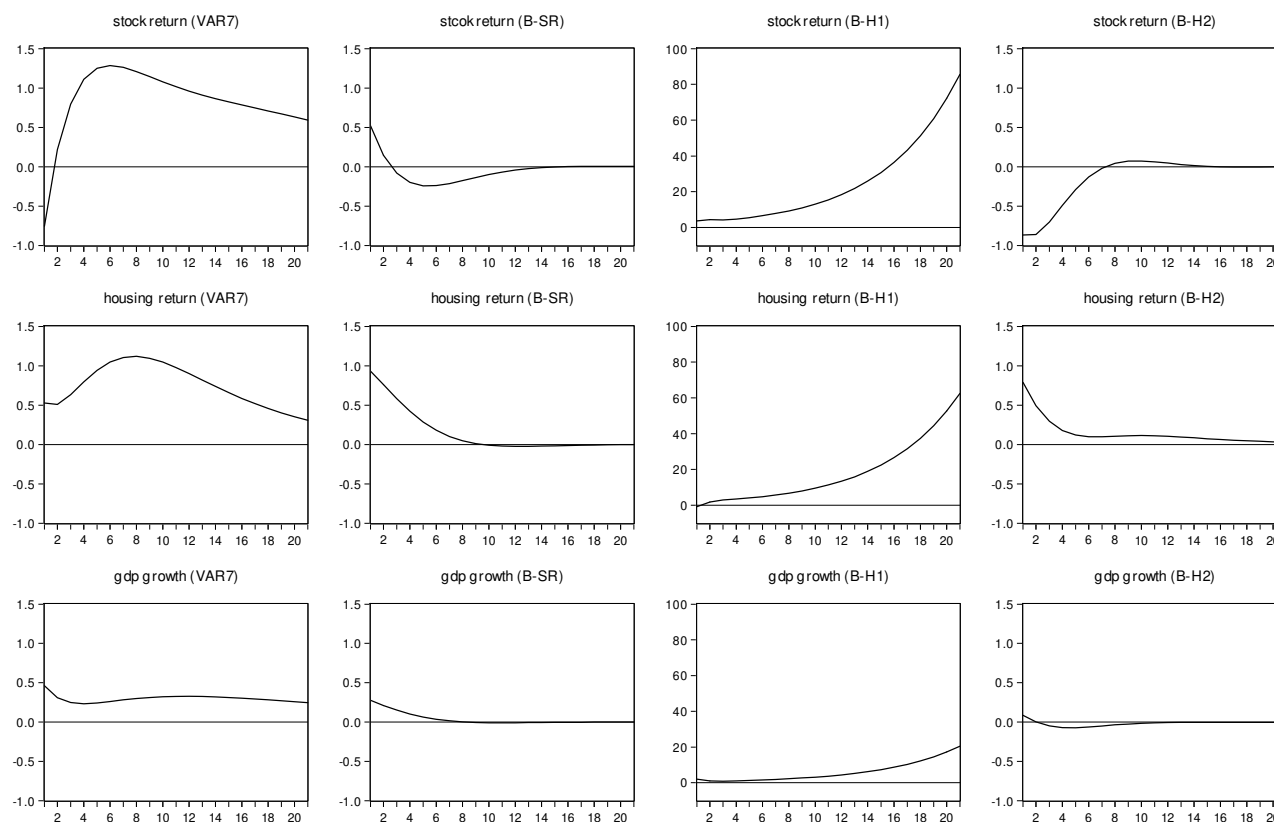


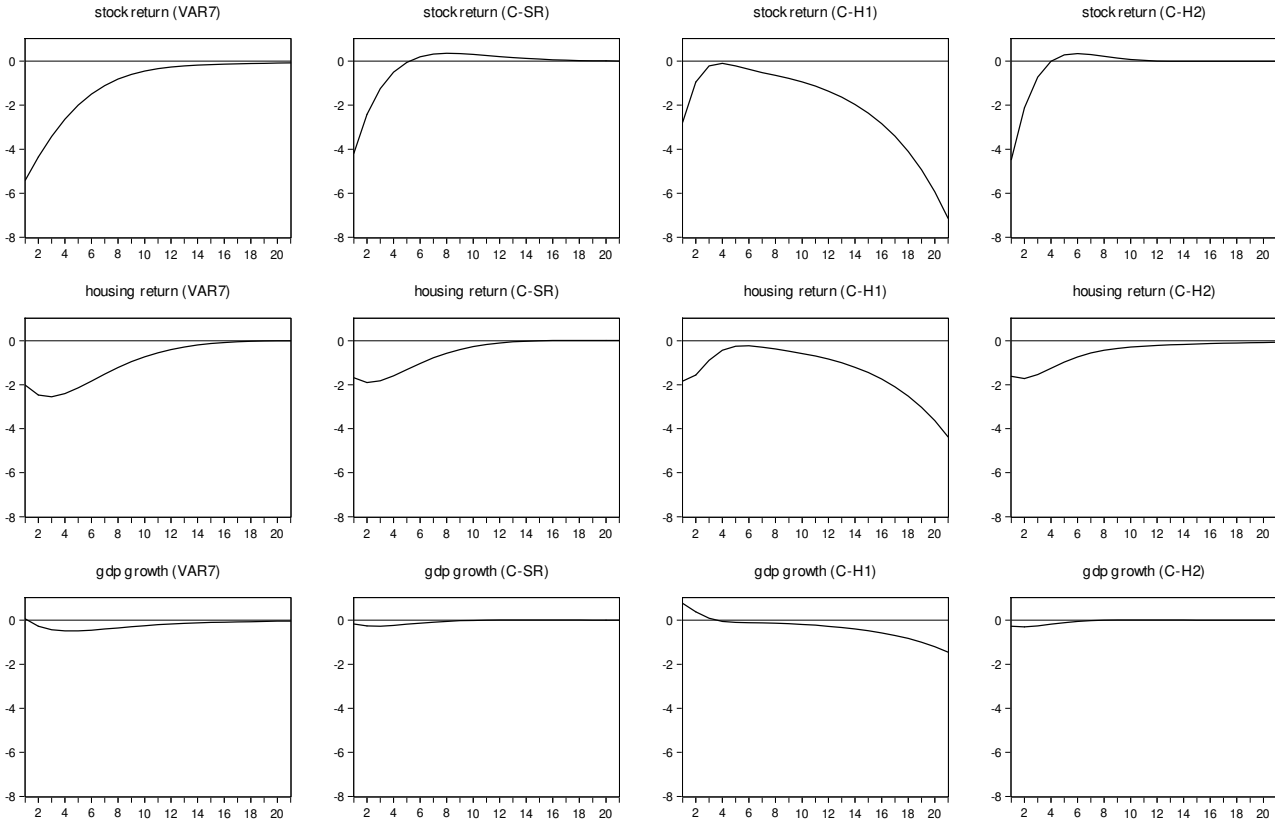
Figure 2 The data for Hong Kong and the smoothed probabilities of regime H1 for Model B (Shaded areas indicate the periods of regime H1)

Figure 3 Responses of (Stock return, Housing return, GDP growth) for one standard deviation increase in unexpected term spread



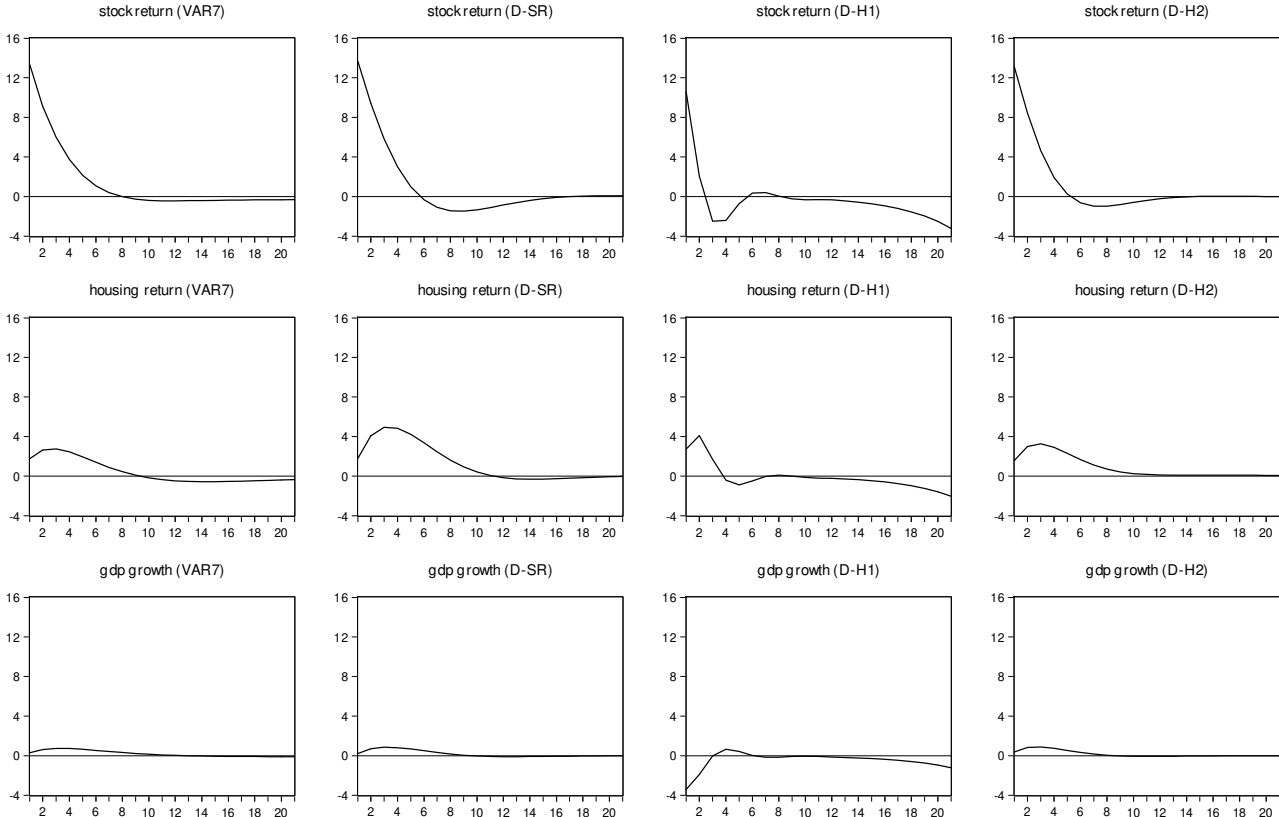
Note: “VAR7” refers to the restricted VAR(7) model. “B-SR” refers to model B with single regime restriction. “B-H1” refers to the model B under regime H1. “B-H2” refers to the model B under regime H2.

Figure 4 Responses of (Stock return, Housing return, GDP growth) for one standard deviation increase in unexpected TED spread



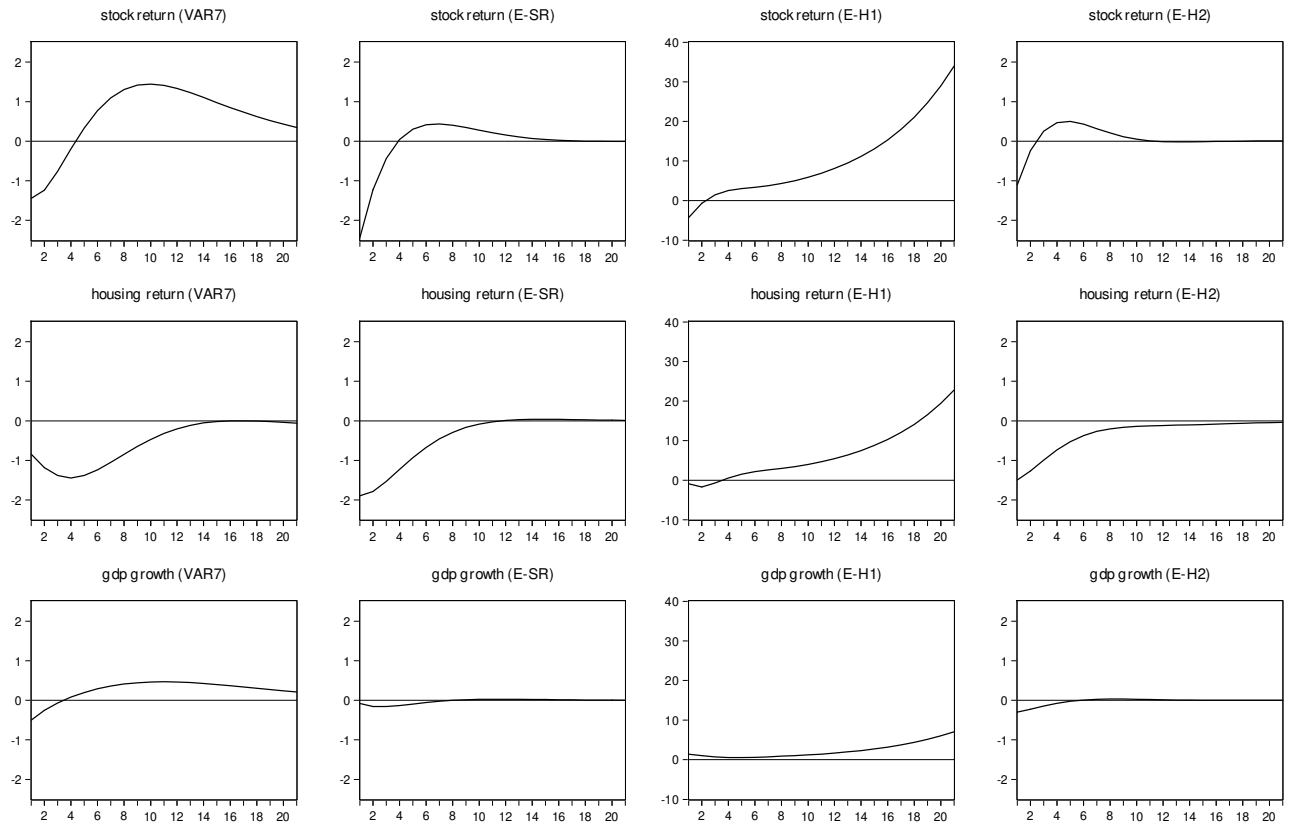
Note: “VAR7” refers to the restricted VAR(7) model. “C-SR” refers to model C with single regime restriction. “C-H1” refers to the model C under regime H1. “C-H2” refers to the model C under regime H2.

Figure 5 Responses of (Stock return, Housing return, GDP growth) for one standard deviation increase in unexpected stock return



Note: "VAR7" refers to the restricted VAR(7) model. "D-SR" refers to model D with single regime restriction. "D-H1" refers to the model D under regime H1. "D-H2" refers to the model D under regime H2.

Figure 6 Responses of (Stock return, Housing return, GDP growth) for one standard deviation increase in unexpected housing return



Note: "VAR7" refers to the restricted VAR(7) model. "E-SR" refers to model E with single regime restriction. "E-H1" refers to the model E under regime H1. "E-H2" refers to the model E under regime H2.

Appendix A: Details of the Regression Results

Table A1 Summary table for the estimation of the linear VAR models

Parameter	VAR(7)_1		VAR(7)_2		VAR(7)_R	
	Estimate	S.E.	Estimate	S.E.	Estimate	S.E.
c_1	0.4444	0.5960	0.4444	0.5960	0.4160	0.3210
a_{11}	0.8759 ^{***}	0.1487	0.8759 ^{***}	0.1487	0.8854 ^{***}	0.0829
a_{12}	-0.1381	0.3532	-0.1381	0.3532	-0.1971	0.2362
a_{13}	-0.0091	0.0132	-0.0091	0.0132	-0.0049	0.0069
a_{14}	-0.0318	0.0487	-0.0318	0.0487	-0.0378	0.0433
a_{15}	0.0060	0.0070	0.0060	0.0070	0.0000	---
a_{16}	-0.0023	0.0155	-0.0181	0.0475	0.0000	---
a_{17}	-0.0181	0.0475	-0.0023	0.0155	0.0000	---
σ_1^2	0.1895 [*]	0.1076	0.1895 [*]	0.1076	0.2041 ^{***}	0.0665
c_2	0.2866	0.5180	0.2867	0.5180	0.2946	0.3189
a_{21}	-0.0526	0.1622	-0.0526	0.1622	-0.0345	0.0941
a_{22}	0.6690 ^{**}	0.2800	0.6690 ^{**}	0.2800	0.6847 ^{***}	0.2117
a_{23}	0.0002	0.0140	0.0002	0.0140	0.0018	0.0089
a_{24}	-0.0270	0.0448	-0.0271	0.0448	-0.0265	0.0350
a_{25}	0.0005	0.0069	0.0005	0.0069	0.0000	---
a_{26}	0.0020	0.0141	0.0101	0.0469	0.0000	---
a_{27}	0.0101	0.0469	0.0020	0.0141	0.0000	---
σ_2^2	0.0962 ^{**}	0.0459	0.0962 ^{**}	0.0459	0.1012 ^{***}	0.0328
c_3	2.9578	11.8631	2.9520	11.8625	2.5051	6.9801
a_{31}	0.8302	3.9980	0.8309	3.9976	0.3975	2.2562
a_{32}	-3.3261	8.6863	-3.3217	8.6861	-3.2420	6.9589
a_{33}	0.8521	0.2736	0.8521 ^{***}	0.2735	0.7763 ^{***}	0.1804
a_{34}	-0.0521	1.4600	-0.0512	1.4598	-0.0673	0.9753
a_{35}	-0.0679	0.1931	-0.0679	0.1931	0.0000	---
a_{36}	0.0123	0.4241	-0.2138	1.7325	0.0000	---
a_{37}	-0.2138	1.7323	0.0122	0.4240	0.0000	---
σ_3^2	108.7728 ^{**}	46.0860	108.7731 ^{**}	46.0887	113.0249 ^{**}	44.2724

(Continued next page)

Summary table for the estimation of the linear VAR models (Continued)

Parameter	VAR(7)_1		VAR(7)_2		VAR(7)_R	
	Estimate	S.E.	Estimate	S.E.	Estimate	S.E.
c_4	-0.5496	1.1537	-0.5495	1.1537	-0.5017	0.9027
a_{41}	0.2493	0.3529	0.2493	0.3528	0.1840	0.2624
a_{42}	0.0809	0.9224	0.0808	0.9224	0.1875	0.7994
a_{43}	0.0200	0.0387	0.0200	0.0387	0.0058	0.0209
a_{44}	0.9570 ^{***}	0.0874	0.9570 ^{***}	0.0874	0.9698 ^{***}	0.0862
a_{45}	-0.0159	0.0205	-0.0159	0.0205	0.0000	---
a_{46}	0.0014	0.0266	0.0196	0.1031	0.0000	---
a_{47}	0.0196	0.1031	0.0014	0.0266	0.0000	---
σ_4^2	1.5407 ^{**}	0.6573	1.5407 ^{**}	0.6573	1.6379 ^{***}	0.4633
c_5	0.9498	19.9606	0.9369	19.9593	0.0040	16.9086
a_{51}	2.2047	6.8149	2.2060	6.8144	1.6303	5.4235
a_{52}	-3.4148	21.7527	-3.4039	21.7531	-3.7464	17.2961
a_{53}	0.0866	0.4494	0.0865	0.4494	0.0086	0.4093
a_{54}	-0.0130	2.4676	-0.0105	2.4674	-0.0748	1.9028
a_{55}	0.6490	0.3984	0.6491	0.3984	0.6990 ^{***}	0.2140
a_{56}	-0.2971	0.5761	0.2833	2.5875	-0.2882	0.2164
a_{57}	0.2836	2.5871	-0.2971	0.5761	0.7489	0.9752
σ_5^2	430.8574 [*]	234.7470	430.8576 [*]	234.7450	439.0567 ^{**}	193.2258
c_6	0.1816	7.4268	1.0397	2.9790	-0.0549	6.8425
a_{61}	0.6001	1.9237	0.0704	0.9278	0.4937	1.6402
a_{62}	-0.5828	7.1873	-0.3794	2.9437	-0.8464	7.2467
a_{63}	-0.1018	0.2002	-0.0045	0.0988	-0.1053	0.1394
a_{64}	-0.1862	0.7204	0.1287	0.4316	-0.2140	0.5740
a_{65}	0.1850 [*]	0.1006	0.0376	0.0522	0.1761 ^{**}	0.0727
a_{66}	0.7588 ^{***}	0.1585	0.6874 ^{***}	0.1767	0.7724 ^{***}	0.1015
a_{67}	-0.1288	0.6986	0.0026	0.0917	0.0185	0.5144
σ_6^2	54.9789 ^{***}	24.6866	6.1525 ^{**}	2.7417	55.4785 ^{***}	17.1303

(Continued next page)

Summary table for the estimation of the linear VAR models (Continued)

Parameter	VAR(7)_1		VAR(7)_2		VAR(7)_R	
	Estimate	S.E.	Estimate	S.E.	Estimate	S.E.
c_7	1.0403	2.9787	0.1785	7.4258	0.9753	2.0104
a_{71}	0.0703	0.9279	0.6012	1.9235	0.0985	0.6721
a_{72}	-0.3799	2.9435	-0.5804	7.1872	-0.4661	1.7547
a_{73}	-0.0045	0.0988	-0.1017	0.2002	0.0031	0.0513
a_{74}	0.1286	0.4316	-0.1857	0.7205	0.1175	0.3163
a_{75}	0.0376	0.0522	0.1850*	0.1006	0.0279	0.0304
a_{76}	0.0026	0.0917	-0.1288	0.6987	0.0038	0.0451
a_{77}	0.6874***	0.1767	0.7588***	0.1585	0.7163***	0.1234
σ_7^2	6.1525**	2.7417	54.9767**	24.6867	6.1875***	2.0599
ρ_{12}	0.1930	0.4958	0.1930	0.4957	0.1690	0.3181
ρ_{13}	-0.1926	0.3981	-0.1926	0.3981	-0.2022	0.2078
ρ_{14}	-0.0954	0.3438	-0.0953	0.3438	-0.1444	0.2452
ρ_{15}	-0.0359	0.4359	-0.0360	0.4358	-0.0361	0.2568
ρ_{16}	0.0599	0.4651	0.1729	0.2806	0.0707	0.2584
ρ_{17}	0.1729	0.2806	0.0599	0.4651	0.1859	0.2017
ρ_{23}	-0.2421	0.4198	-0.2421	0.4198	-0.2652	0.3853
ρ_{24}	-0.0037	0.3415	-0.0037	0.3415	-0.0220	0.2404
ρ_{25}	-0.2400	0.4468	-0.2400	0.4468	-0.2601	0.3613
ρ_{26}	-0.2419	0.4010	0.0585	0.4755	-0.2544	0.3003
ρ_{27}	0.0585	0.4755	-0.2419	0.4010	0.0560	0.3563
ρ_{34}	0.0181	0.2362	0.0181	0.2362	0.0550	0.1556
ρ_{35}	0.6775	0.2213	0.6775***	0.2213	0.6833***	0.1487
ρ_{36}	0.2982	0.2701	0.1129	0.3363	0.3018	0.2231
ρ_{37}	0.1129	0.3363	0.2982	0.2701	0.1034	0.2222
ρ_{45}	-0.0475	0.4372	-0.0475	0.4372	-0.0273	0.3139
ρ_{46}	-0.1127	0.3051	-0.2093	0.3292	-0.1089	0.2198
ρ_{47}	-0.2093	0.3292	-0.1127	0.3051	-0.2192	0.2632
ρ_{56}	0.4085	0.3197	0.3069	0.2971	0.4135**	0.1974
ρ_{57}	0.3069	0.2971	0.4085	0.3197	0.3014*	0.1807
ρ_{67}	0.2401	0.3469	0.2400	0.3469	0.2412	0.2349
$\ln L$	-1629.5359		-1629.5359		-1640.0746	
AIC	33.2725		33.2725		33.2442	

Notes: *, **, and *** represent the significance at 10%, 5%, and 1%, respectively

Table A2 The Estimation Result for US System

Parameter	VAR Model		Markov Switching VAR Model			
	Single Regime		Regime US1		Regime US2	
	Estimate	S.E.	Estimate	S.E.	Estimate	S.E.
c_1	0.411**	0.186	0.775	33.393	0.775	33.393
$\alpha_1(2)$					-0.558	33.398
a_{11}	0.888***	0.053	0.944	14.219	0.920*****	0.058
a_{12}	-0.195	0.147	-0.340	11.169	-0.200	0.172
a_{13}	-0.005	0.003	-0.006	0.405	0.003	0.004
a_{14}	-0.039	0.025	0.007	4.944	-0.050**	0.024
σ_1^2	0.194***	0.038	0.133	13.593	0.133	13.593
λ_1			1.000	---	1.027	52.387
c_2	0.289*	0.161	0.813	88.985	0.813	88.985
$\alpha_2(2)$					-0.707	89.013
a_{21}	-0.031	0.050	-0.035	31.824	-0.008	0.025
a_{22}	0.688***	0.110	0.429	26.747	0.776***	0.085
a_{23}	0.002	0.005	0.014	0.845	0.000	0.002
a_{24}	-0.0028	0.022	-0.106	9.235	0.006	0.012
σ_2^2	0.098***	0.021	0.192	18.371	0.192	18.371
λ_2			1.000	---	0.340	16.267
c_3	2.668	4.478	-7.228	990.488	-7.228	990.488
$\alpha_3(2)$					11.492	990.708
a_{31}	0.321	1.276	6.488	667.935	-0.851	1.625
a_{32}	-3.333	3.716	-10.242	1508.937	1.795	3.984
a_{33}	0.775***	0.093	0.611	17.381	0.728***	0.076
a_{34}	-0.045	0.569	0.567	134.015	-0.555	0.513
σ_3^2	110.967***	27.006	136.250	11987	136.250	11987
λ_3			1.000	---	0.705	30.994

(continued next page)

Table A2 The Estimation Result for US System (Continued)

Parameter	VAR Model		Markov Switching VAR Model			
	Single Regime		Regime US1		Regime US2	
	Estimate	S.E.	Estimate	S.E.	Estimate	S.E.
c_4	-0.509	0.669	-1.653	277.129	-1.653	277.129
$\alpha_4(2)$					1.163	277.130
a_{41}	0.188	0.172	-0.238	98.429	0.281**	0.137
a_{42}	0.191	0.644	1.046	126.141	0.180	0.599
a_{43}	0.006	0.016	-0.042	3.880	0.019	0.015
a_{44}	0.968***	0.062	1.130	29.935	0.914***	0.044
σ_4^2	1.664***	0.292	2.375	21.795	2.375	21.795
λ_4			1.000	---	0.621	27.831
ρ_{12}	0.134	0.185	0.632	54.435	-0.237	0.188
ρ_{13}	-0.184	0.130	0.063	68.210	-0.299*	0.158
ρ_{14}	-0.133	0.150	0.166	86.350	-0.191	0.163
ρ_{23}	-0.255	0.213	-0.329	39.574	0.036	0.201
ρ_{24}	0.012	0.153	0.722	33.300	-0.013	0.193
ρ_{34}	0.036	0.110	-0.401	56.026	0.232	0.241
P_{u1u1}				0.747***(0.193)		
P_{u2u2}				0.925***(0.076)		
$\ln L$	-648.821			-551.757		
AIC	13.054			11.803		

Note: Values in parenthesis refer to standard deviations. *, **, and *** represent the significance at 10%, 5%, and 1%, respectively.

Table A3 The Estimation Results for Model A
(Stock Return, Housing Return, GDP Growth)

Parameter	VAR Model		Markov Switching VAR Model			
	Single Regime		Regime HK1		Regime HK2	
	Estimate	S.E.	Estimate	S.E.	Estimate	S.E.
c_1	2.885	3.290	-6.963	26.123	8.975**	4.408
a_{11}	0.703***	0.086	0.807	1.584	0.727***	0.100
a_{12}	-0.259	0.164	0.071	3.519	-0.107	0.200
a_{13}	0.148	0.611	1.976	1.279	-1.460	1.013
σ_1^2	439.878***	63.459	249.835	302.865	249.835	302.865
λ_1			1.000	---	1.270	0.781
c_2	0.381	1.148	-10.487	6.747	3.344**	1.435
a_{21}	0.145***	0.030	0.401	0.640	0.136***	0.027
a_{22}	0.782***	0.067	0.497	1.551	0.845***	0.065
a_{23}	-0.126	0.252	0.382	0.438	-0.615**	0.292
σ_2^2	58.955***	8.314	27.680	76.664	27.680	76.664
λ_2			1.000	---	1.266	1.768
c_3	1.024**	0.440	0.598	13.008	1.329***	0.393
a_{31}	0.040***	0.012	-0.002	0.308	0.045***	0.009
a_{32}	-0.004	0.026	0.142	0.480	-0.013	0.019
a_{33}	0.704***	0.070	0.822	0.565	0.643***	0.075
σ_3^2	6.404***	0.922	20.480	43.547	20.480	43.547
λ_3			1.000	---	0.379	0.404
ρ_{12}	0.395***	0.090	0.744	0.906	0.302	0.112
ρ_{13}	0.313***	0.108	-0.154	0.770	0.508***	0.095
ρ_{23}	0.218**	0.104	0.072	0.811	0.393***	0.116
α_0				2.265**	(1.098)	
α_1				3.701*	(1.931)	
P_{h1h1}				0.906		
P_{h2h2}				0.976		
$\ln L$	-1042.845		-990.506			
AIC	20.599		19.971			

Note: Values in parenthesis are standard deviations. *, **, and *** represent the significance at 10%, 5%, and 1%, respectively.

Table A4 The Estimation Results for Model B
(VAR model with Term Spread as exogenous variable)

Parameter	VAR Model		Markov Switching VAR Model			
	Single Regime		Regime HK1		Regime HK2	
	Estimate	S.E.	Estimate	S.E.	Estimate	S.E.
c_1	-0.139	4.991	-32.811	7961.761	8.377	6.656
a_{11}	0.700***	0.092	0.334	349.347	0.742***	0.116
a_{12}	-0.292*	0.178	0.566	348.388	-0.126	0.212
a_{13}	0.188	0.642	1.838	221.827	-1.391	0.911
γ_{z1}	1.735	2.368	16.190	4484.226	0.284	2.683
γ_{u1}	1.400	7.298	9.838	9085.480	-2.335	8.281
σ_1^2	435.797***	62.064	173.595	33023.187	173.595	33023.187
λ_1			1.000	---	1.524	144.982
c_2	-1.456	2.134	-12.806	1118.885	2.205	2.478
a_{21}	0.139***	0.032	0.382	116.212	0.129***	0.029
a_{22}	0.766***	0.076	0.520	93.742	0.824***	0.071
a_{23}	-0.091	0.274	0.436	75.211	-0.518*	0.307
γ_{z2}	1.042	0.917	1.381	1112.747	0.493	0.846
γ_{u2}	2.504	3.001	-2.289	3362.321	2.118	2.900
σ_2^2	56.722***	9.311	25.630	5932.499	25.630	5932.499
λ_2			1.000	---	1.304	150.915
c_3	0.816	0.912	-1.652	4130.722	0.873	0.657
a_{31}	0.037***	0.013	-0.072	95.620	0.045***	0.009
a_{32}	-0.005	0.034	0.244	99.762	-0.021	0.020
a_{33}	0.711	0.076	0.743	159.065	0.667***	0.074
γ_{z3}	0.115	0.355	1.566	1649.230	0.234	0.235
γ_{u3}	0.746	1.004	5.216	1769.083	0.230	0.698
σ_3^2	6.313***	1.133	18.828	3152.976	18.828	3152.976
λ_3			1.000	---	0.389	32.612
ρ_{12}	0.387***	0.103	0.830	27.776	0.307**	0.137
ρ_{13}	0.309***	0.112	-0.348	301.640	0.519***	0.103
ρ_{23}	0.203*	0.118	0.124	346.273	0.381***	0.143
α_0				2.397**	(1.040)	
α_1				3.856*	(2.269)	
P_{h1h1}				0.917		
P_{h2h2}				0.979		
$\ln L$	-1040.304		-973.731			
AIC	20.666		19.878			

Note: Values in parenthesis are standard deviations. *, **, and *** represent the significance at 10%, 5%, and 1%, respectively.

Table A5 The Estimation Results for Model C
(VAR model with TED Spread as exogenous variable)

Parameter	VAR Model		Markov Switching VAR Model			
	Single Regime		Regime HK1		Regime HK2	
	Estimate	S.E.	Estimate	S.E.	Estimate	S.E.
c_1	5.397	4.520	-10.640	60.308	16.454***	5.831
a_{11}	0.656***	0.095	0.764	1.590	0.569***	0.121
a_{12}	-0.223	0.162	0.119	4.485	-0.050	0.210
a_{13}	0.322	0.668	1.804	3.431	-1.294	1.099
γ_{z1}	-4.679	7.077	7.311	68.204	-11.911	7.753
γ_{u1}	-16.886**	8.026	-11.222	107.627	-18.088*	10.025
σ_1^2	418.605***	62.973	202.478	639.763	202.478	639.763
λ_1			1.000	---	1.330	2.102
c_2	0.155	2.131	-6.230	8.485	3.796*	2.221
a_{21}	0.139***	0.033	0.386	0.665	0.108***	0.039
a_{22}	0.792***	0.068	0.437	1.384	0.845***	0.069
a_{23}	-0.084	0.268	0.408	0.541	-0.488	0.350
γ_{z2}	0.093	3.127	-3.946	11.824	-1.121	2.524
γ_{u2}	-6.795*	3.783	-7.418	61.065	-6.526*	3.482
σ_2^2	56.200***	9.063	28.473	66.822	28.473	66.822
λ_2			1.000	---	1.237	1.488
c_3	1.437**	0.682	0.665	18.240	1.858***	0.482
a_{31}	0.035**	0.017	-0.008	0.434	0.032***	0.012
a_{32}	-0.002	0.027	0.143	0.688	-0.011	0.019
a_{33}	0.718***	0.070	0.810	1.153	0.671***	0.071
γ_{z3}	-0.687	0.626	0.214	36.483	-0.954**	0.427
γ_{u3}	-0.670	1.645	3.119	61.906	-1.083	1.188
σ_3^2	6.275***	0.908	16.137	39.107	16.137	39.107
λ_3			1.000	---	0.397	0.481
ρ_{12}	0.371***	0.104	0.709	0.443	0.252	0.153
ρ_{13}	0.298***	0.114	-0.166	1.191	0.493***	0.100
ρ_{23}	0.213	0.140	0.128	1.225	0.407***	0.146
α_0				1.847**	(0.889)	
α_1				3.116**	(1.411)	
P_{h1h1}				0.864		
P_{h2h2}				0.958		
$\ln L$	-1038.295		-982.759			
AIC	20.627		20.054			

Note: Values in parenthesis are standard deviations. *, **, and *** represent the significance at 10%, 5%, and 1%, respectively.

Table A6 The Estimation Results for Model D
(VAR model with stock return as exogenous variable)

Parameter	VAR Model		Markov Switching VAR Model			
	Single Regime		Regime HK1		Regime HK2	
	Estimate	S.E.	Estimate	S.E.	Estimate	S.E.
c_1	1.845	2.780	-1.874	531.299	7.298**	3.410
a_{11}	0.725***	0.102	0.789	19.359	0.689***	0.136
a_{12}	-0.310**	0.123	-0.223	25.194	-0.125	0.146
a_{13}	0.372	0.515	1.666	23.179	-0.980	0.812
γ_{z1}	0.006	0.136	-0.317	13.367	0.179	0.175
γ_{u1}	1.496***	0.215	1.156	28.335	1.434***	0.313
σ_1^2	255.095***	30.550	165.908	2936.829	165.908	2936.829
λ_1			1.000	---	1.162	10.290
c_2	0.635	1.390	-11.080	140.606	3.102*	1.671
a_{21}	0.200***	0.037	0.415	5.782	0.143***	0.042
a_{22}	0.774***	0.060	0.384	7.095	0.840***	0.064
a_{23}	-0.163	0.266	0.391	11.526	-0.565*	0.328
γ_{z2}	-0.128**	0.065	0.022	6.834	-0.006	0.072
γ_{u2}	0.196**	0.080	0.299	16.032	0.174*	0.097
σ_2^2	52.714***	9.219	23.500	835.186	23.500	835.186
λ_2			1.000	---	1.338	23.813
c_3	1.005**	0.477	3.345	235.458	1.274***	0.448
a_{31}	0.040*	0.020	-0.031	4.214	0.045***	0.013
a_{32}	-0.005	0.032	0.361	7.440	-0.014	0.022
a_{33}	0.708***	0.073	0.759	16.043	0.659***	0.076
γ_{z3}	0.000	0.031	-0.129	8.639	0.003	0.021
γ_{u3}	0.025	0.040	-0.372	17.544	0.042*	0.025
σ_3^2	6.351***	1.220	14.938	514.751	14.938	514.751
λ_3			1.000	---	0.432	7.445
ρ_{12}	0.350**	0.145	0.736	6.334	0.205	0.180
ρ_{13}	0.335**	0.131	0.060	24.372	0.500***	0.101
ρ_{23}	0.211**	0.107	0.340	24.737	0.357**	0.148
α_0				2.358**	(1.031)	
α_1				3.821*	(2.242)	
P_{h1h1}				0.914		
P_{h2h2}				0.979		
$\ln L$	-1009.825			-954.951		
AIC	20.074			19.514		

Note: Values in parenthesis are standard deviations. *, **, and *** represent the significance at 10%, 5%, and 1%, respectively.

Table A7 The Estimation Results for Model E
(VAR model with housing return as exogenous variable)

Parameter	VAR Model		Markov Switching VAR Model			
	Single Regime		Regime HK1		Regime HH2	
	Estimate	S.E.	Estimate	S.E.	Estimate	S.E.
c_1	2.456	3.370	-6.810	47.546	8.374*	4.723
a_{11}	0.684***	0.092	0.803	1.832	0.717***	0.138
a_{12}	-0.239	0.195	-0.045	3.570	-0.061	0.251
a_{13}	0.159	0.702	1.924	3.719	-1.537	1.155
γ_{z1}	0.324	0.887	-0.140	12.058	0.660	1.022
γ_{u1}	-2.171	2.479	-3.838	41.126	-0.980	3.099
σ_1^2	433.117***	63.177	214.273	884.747	214.273	884.747
λ_1			1.000	---	1.390	2.872
c_2	0.465	1.232	-12.190	20.573	3.531**	1.427
a_{21}	0.137***	0.030	0.417	0.745	0.133***	0.032
a_{22}	0.768***	0.074	0.445	1.409	0.860***	0.068
a_{23}	-0.037	0.284	0.339	0.812	-0.564*	0.303
γ_{z2}	-0.239	0.320	0.714	3.783	-0.058	0.299
γ_{u2}	-1.688**	0.802	-0.820	6.427	-1.336*	0.725
σ_2^2	54.922***	9.373	21.327	64.135	21.327	64.135
λ_2			1.000	---	1.352	2.035
c_3	0.912*	0.474	-0.479	9.533	1.228***	0.404
a_{31}	0.038***	0.013	0.014	0.337	0.042***	0.009
a_{32}	0.003	0.026	0.087	0.706	-0.005	0.020
a_{33}	0.686***	0.075	0.825	1.177	0.632***	0.085
γ_{z3}	0.124	0.120	0.279	2.703	0.114	0.076
γ_{u3}	-0.076	0.283	1.263	6.727	-0.264	0.242
σ_3^2	6.247***	1.016	16.515	71.421	16.515	71.421
λ_3			1.000	---	0.411	0.882
ρ_{12}	0.388***	0.106	0.794	0.875	0.322**	0.128
ρ_{13}	0.308**	0.128	-0.021	3.173	0.504***	0.123
ρ_{23}	0.236*	0.124	0.159	3.796	0.397**	0.134
α_0				1.825**	(1.006)	
α_1				3.219**	(1.499)	
P_{h1h1}				0.861		
P_{h2h2}				0.962		
$\ln L$	-1037.295		-981.426			
AIC	20.608		20.028			

Note: Values in parenthesis are standard deviations. *, **, and *** represent the significance at 10%, 5%, and 1%, respectively.

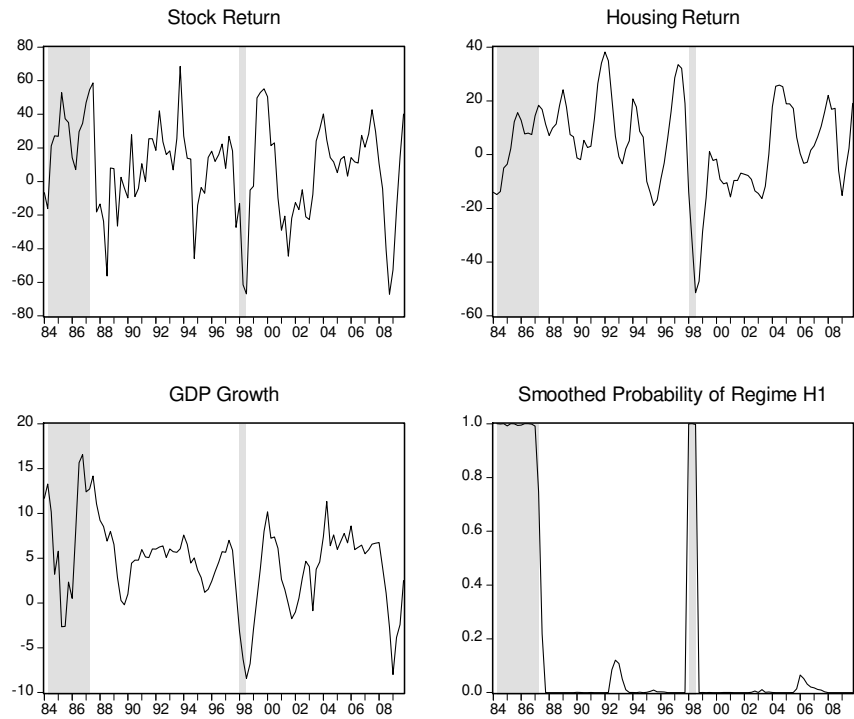


Figure A-1 The data for Hong Kong and the smoothed probabilities of regime H1 for Model A (Shaded areas indicate the periods of regime H1)

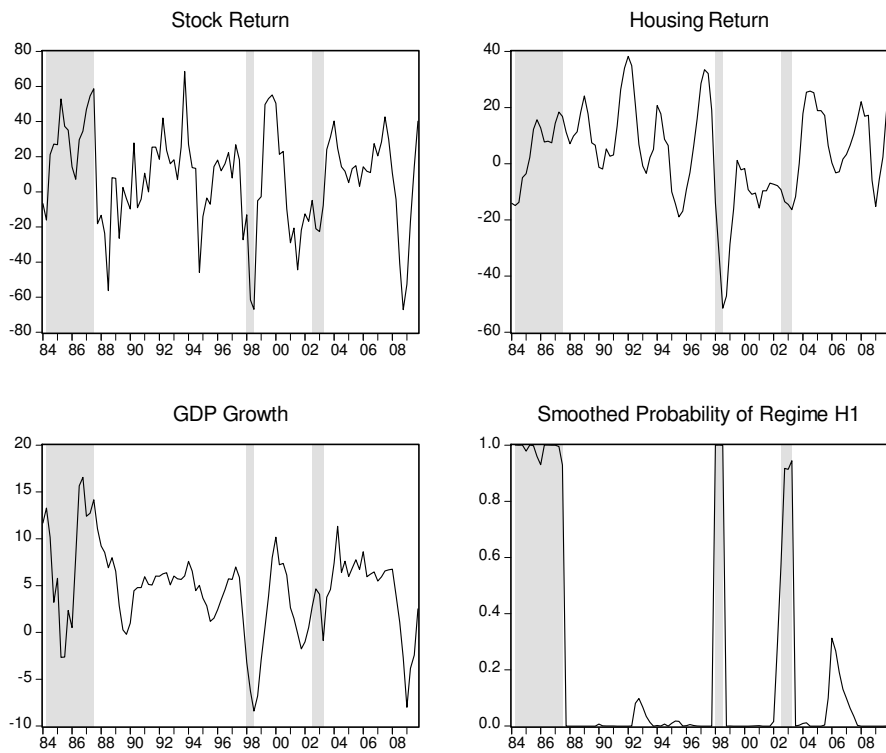


Figure A-2 The data of Hong Kong and smoothed probabilities of regime H1 for Model C (Shaded areas indicate the periods of regime H1)

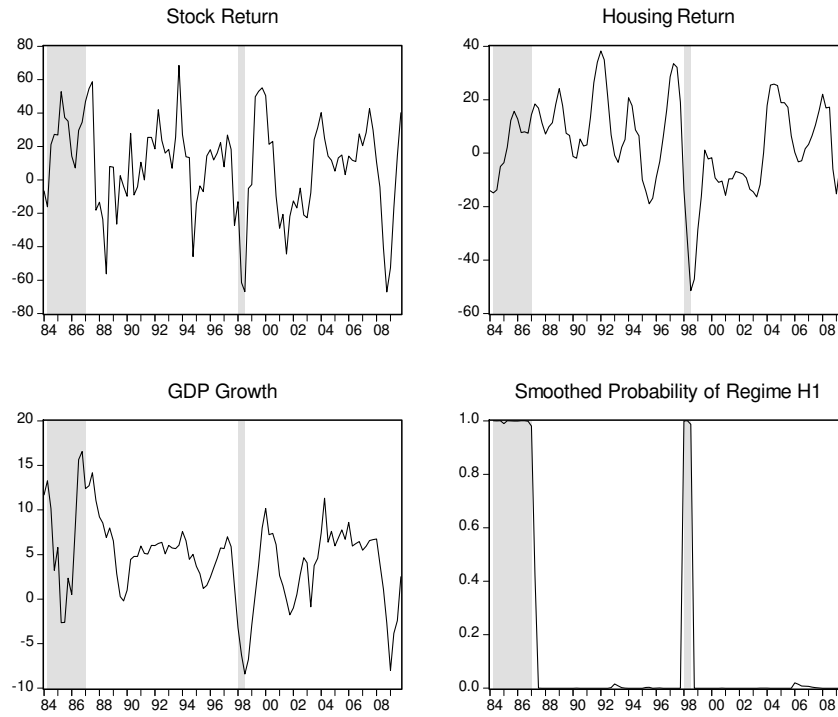


Figure A-3 The data of Hong Kong and smoothed probabilities of regime H1 for Model D (Shaded areas indicate the periods of regime H1)

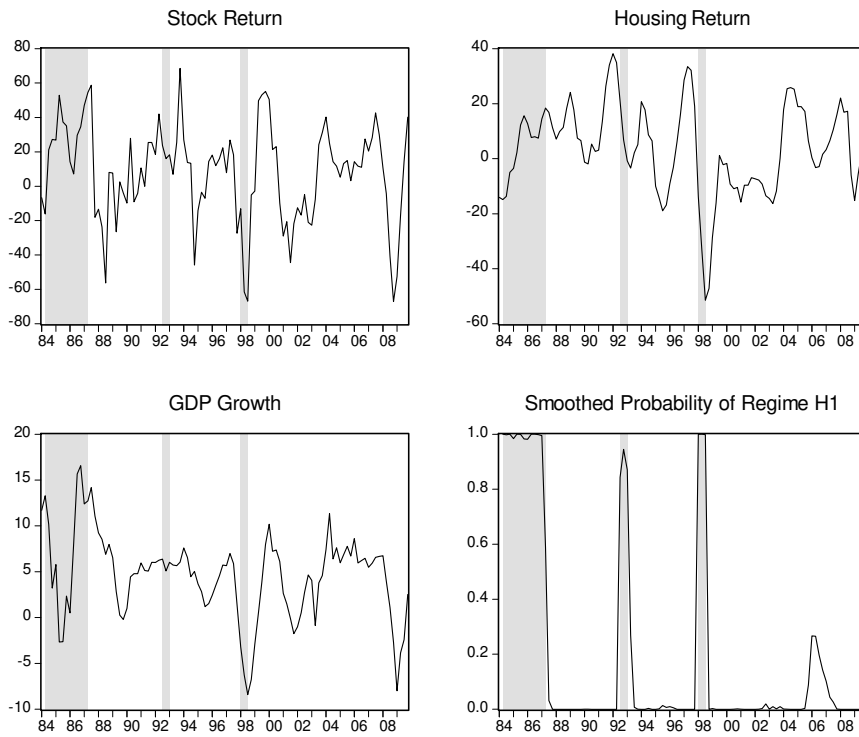


Figure A-4 The data of Hong Kong and smoothed probabilities of regime H1 for Model E (Shaded areas indicate the periods of regime H1)

Appendix B: More Details of the Data

Table B-1 Summary Statistics for US data (1984Q1-2009Q4)

	Term Spread	TED Spread	Stock Return	Housing Return
Mean	1.741	0.650	3.887	1.380
Median	1.724	0.513	6.616	1.493
Maximum	3.611	3.333	36.146	8.810
Minimum	-0.628	0.097	-50.240	-8.972
Std. Dev.	1.173	0.497	17.519	3.373
Skewness	-0.162	2.051	-0.899	-0.472
Kurtosis	1.779	10.079	3.535	3.410
Observations	104	104	104	104

Table B-2 Correlation Coefficients for US data

	Term Spread	TED Spread	Stock Return	Housing Return
Term Spread	1.000			
TED Spread	-0.058	1.000		
Stock Return	-0.262	-0.166	1.000	
Housing Return	-0.166	-0.423	0.228	1.000

Table B-3 Summary Statistics for HK data (1984Q1-2009Q4)

	Stock Return	Housing Return	GDP Growth
Mean	7.908	3.603	4.553
Median	12.579	4.203	5.575
Maximum	68.573	38.193	16.561
Minimum	-67.128	-51.432	-8.406
Std. Dev.	28.126	16.471	4.691
Skewness	-0.517	-0.469	-0.330
Kurtosis	3.228	3.727	3.662
Observations	104	104	104

Table B-4 Correlation Coefficients for HK data

	Stock Return	Housing Return	GDP Growth Rate
Stock Return	1.000		
Housing Return	0.395	1.000	
GDP Growth Rate	0.471	0.491	1.000

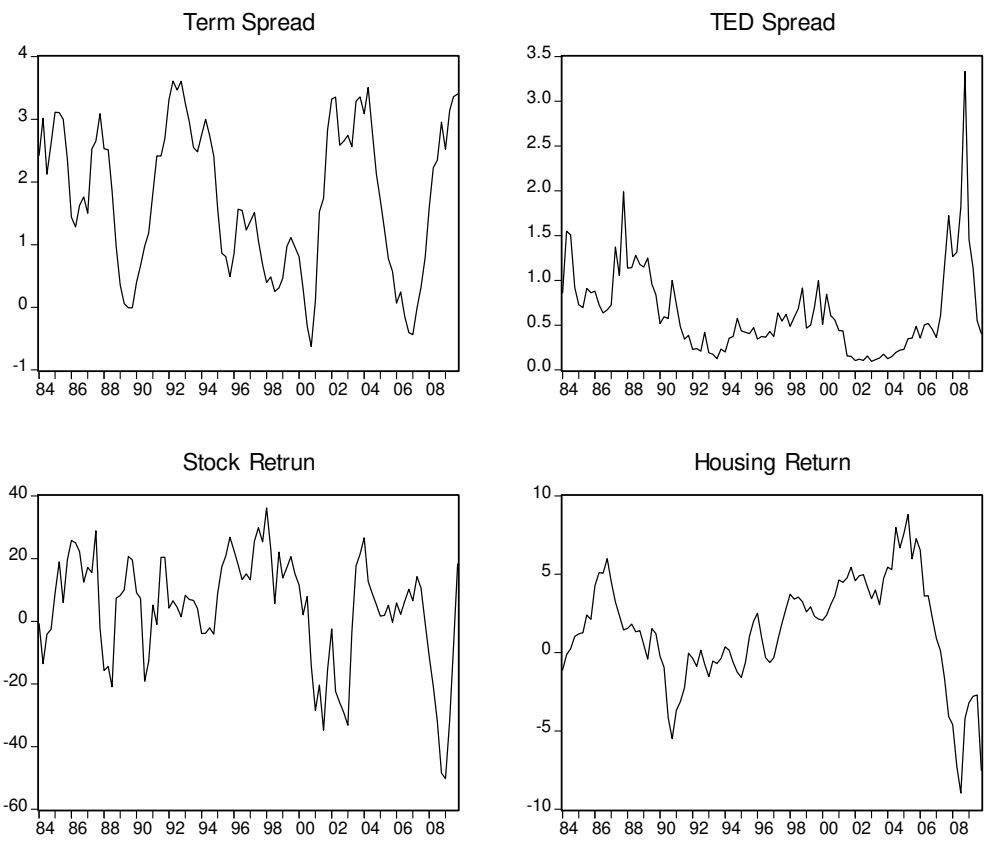


Figure B-1 The time plots for US data

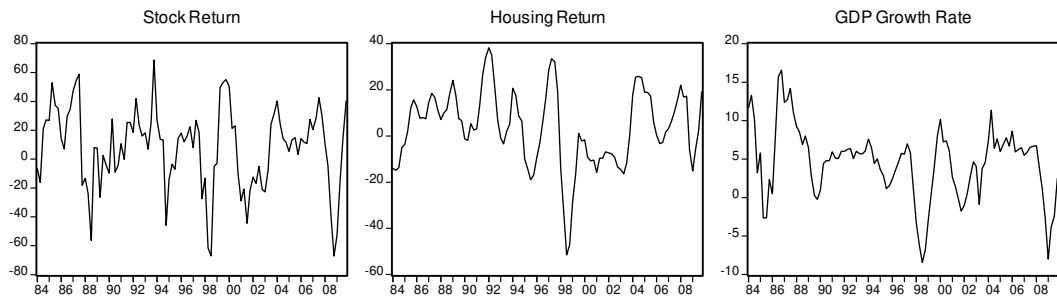


Figure B-2 The time plots for HK data

Propagation Mechanism

