



Munich Personal RePEc Archive

Green-to-Grey China: Determinants and Forecasts of its Green Growth

You, Jing and Huang, Yongfu

School of Agricultural Economics and Rural Development Renmin University of China, UNU-WIDER

19 December 2013

Online at <https://mpra.ub.uni-muenchen.de/58101/>
MPRA Paper No. 58101, posted 25 Aug 2014 00:50 UTC

Green-to-Grey China: Determinants and Forecasts of its Green Growth⁺

Jing You

School of Agricultural Economics and Rural Development
Renmin University of China,
and Department of Land Economy, University of Cambridge.
Email: jing.you@ruc.edu.cn

Yongfu Huang*

World Institute for Development Economics Research
United Nations University (UNU-WIDER)
Email: Yongfu.Huang@wider.unu.edu

This version, August 2014

Abstract

This paper investigates the determinants of China's green growth and its pathways in the future. We use the OECD conceptual framework for green growth to measure green growth rates for 30 provinces over the period 1998-2011. By estimating a spatial dynamic panel model at provincial level, we find that China has experienced green growth, but with slower speed in the sample period. The average green growth rate is forecast to decline first and then fluctuate around zero over the next two decades. There appears to be a conditional convergence in provincial green growth and positive spatial influence across neighboring areas, yielding a cap of the country's level of green development in the future. Mass innovation financed by the government and green structural reforms achieved at firm level are likely to stimulate green growth, while political shocks in terms of reappointment of provincial officials could retard China's progress to a green economy.

Key words: Green growth, spatial dynamic panel model, forecasting, China
JEL classification: O10, O13, C33, O53

⁺ The authors are grateful to very helpful comments from Bernard Fingleton and participants in the IAAE Annual Conference in Queen Mary, University of London and the WCERE in Istanbul, both in 2014. This research is supported by the Research Funds of Peking University – Lincoln Institute Center for Urban Development and Land Policy (2013-2014, Grant No.: FS20130901), and the Specialized Research Fund for the Doctoral Program of Higher Education, the Ministry of Education of China (Grant No.: 20130004120001). The usual disclaimer applies.

* Correspondence author.

1. Introduction

In the past three decades, China has achieved a great economic success. However, this economic wonder has come at a high price. China's environment has deteriorated rapidly and China has actually become one of the largest carbon dioxide emitters in the world. Climate change has already exerted detrimental effects on China's water resources, disturbed the natural ecosystems, led to the coastal sea level rise and imposed various social and economic costs on society. Luckily, the Chinese government has fully realized the seriousness of the challenge and attached great importance to the battle for CO₂ emission reduction. For example, China has committed itself to reducing its carbon intensity by 40-45% between 2005 and 2020. This is a very challenging target, and will require vigorous efforts and large-scale changes in all aspects of the economy.

In the international arena, China's stance as an internationally responsible country at recent yearly UNFCCC conferences has contributed enormously to the forging of agreement on a protocol to be finalised by 2015 that will bring all nations under the same legal regime by 2020. For a long time, the Kyoto Protocol has been criticized by many as failing to achieve its greenhouse gas (GHG) emission reduction target. One important reason is that, since the world's biggest GHG emitters – China, America and India – are being outside the treaty, the Kyoto is to a large extent all about the EU committing itself to emission reduction. Having said that, there is no denying that the world always needs to bear the “common but differentiated principal” in mind and the international community should not turn a blind eye to the historical responsibilities of the developed countries for the world's current climate change crisis. Only with this mutual understanding between the developing and

developed countries, can a truly effective international framework of fighting climate change be possible.

However, unlike the EU, America, or Australia which have long engaged themselves in emission reduction efforts with comparatively well-developed environmental protection mechanisms and infrastructure in place, China still has a long way to go and is not up to the challenge yet. Measured against China's emission reduction target, so far China's cleaning-up-the-economy progress has been unsatisfactory. China's lack of a systematic carbon emission mitigation enabling framework is at the root of the problem. Among the key factors that obstruct China's low carbon development progress are: China's lack of effective environmental laws and institutions to guide and protect its low carbon development efforts (Chen, 2011), insufficient public awareness of how to protect the environment (Munro, 2013) and limited knowledge of for example "circular economy" even among officials (Xue *et al.*, 2010), inadequate financial and technological investments to boost its sustainable development (Lewis, 2010; Chen, 2011) and a lack of a well-established carbon market to facilitate carbon emission reduction activities (Lo, 2013).

Given the very short time between now and 2015 when China will acknowledge legally-binding emission reduction targets, China has to make extra efforts and make fundamental changes to all aspects of its economic, political and social life to be ready for 2015. Due to its large-scale economy and huge population, the green growth of China's economy will be crucial, not only for its own sustainable future but also for global sustainability.¹

¹ It is worth noting that sustainable development encompasses three pillars, namely, economic development, environmental protection, and social development while green growth largely focuses on the first two aspects.

So far, the literature suggests that economic and social improvements, especially in terms of poverty alleviation, tend to go hand in hand while the relationship between economic development and environmental protection has demonstrated a different story, with current economic growth being achieved at huge cost in environmental degradation. The ever-worsening environment and the urgent development needs of the world's poor, especially in developing economies, highlight the urgency and necessity for the world to grow greener while at the same time keeping, if not accelerating, its current growth pace. Luckily, such two different and seemingly-incompatible demands can be reconciled into the single idea of green growth, which concerns both short-term economic growth and long-term environmental sustainability.

According to Hallegatte *et al.* (2011), green growth can be defined as “fostering economic growth and development, while ensuring that natural assets continue to provide the resources and environmental services on which our well-being relies”. Unlike the traditional pattern of economic growth, which has been achieved largely at the expense of the environment, green growth aims to achieve synergy between economic progress and environmental protection, which is vital to realizing the goal of sustainable development.² As pointed out by Toman (2012), green growth emphasizes that strategic environmental policies can both promote environmental sustainability at low cost and lead to sustained economic growth. Maximizing the synergy between the traditionally-incompatible factors of economic development and environmental sustainability will improve the social and political acceptability of

² The feasibility of the green growth approach lies primarily in the fact that the environment, in the form of natural capital, is an input into the national production function, and environmental protection can increase the inputs of natural resources/capital and thus give rise to higher economic yield (Hallegatte *et al.*, 2011). However, despite the impact of natural capital on economic development, the classic economic growth model tends to neglect the role of natural capital in the national production function, taking no account of the link between environmental conservation and economic growth.

environmental policies. Huang and Quibria (2013) find that the extent of green growth in a given country depends on its earlier green growth development and regional diffusion, its domestic learning or determination to achieve the national politically-desired target, and exogenous shocks.

Although the urgency and need for low carbon development is widely acknowledged, little is known about how to decarbonize China's economy in an effective and timely manner or what the global impact might be. The existing literature focuses mainly on environmental problems or exploitation of natural resources in the Chinese context. For example, a large number of studies have investigated the relationship between economic growth and emission of various pollutants.³ Others calculate the country's total factor productivity when natural resource constraints are binding (Chen and Santos-Paulino, 2013) and forecast China's CO₂ emissions (Auffhammer and Carson, 2008) or energy demand (You, 2013). Despite some sensitivity to which indicators have been used and sample periods, the general pattern documented by the existing studies is that the higher economic growth, the more pollution and energy demand.⁴ Nevertheless, to the best of our knowledge, no literature measures directly China's capability and potential for "green growth" by reconciling economic and environmental aspects in a coherent and empirically computable framework. In this respect, this paper uses the OECD's (2011) conceptual framework of green growth to provide the first empirical analysis for China. More specifically, the questions addressed in this paper are: (i) how China's green growth evolves; (ii) what factors contribute to China's green growth, in

³ E.g., Brajer *et al.* (2011) for the existence of the Environmental Kuznets Curve (EKC) for aggregated and disaggregated indices of air pollution; Cole *et al.* (2011) for industrial pollutants at the city level and different firm ownerships; Zhang *et al.* (2013) for the extended association with energy consumption, air pollution and air protection investment; Wang *et al.* (2011) and Fei *et al.* (2011) for CO₂ emission and Wang and Watson (2010) for its pathways in the future.

⁴ See You (2013) for a review for forecasts of China's energy consumption and emissions.

particular from the perspective of green structural reforms; and (iii) the future of China's green growth, in the light of recent experience.

With a dynamic spatial panel model, we detect a convergence across Chinese provinces. By forecasting China's green growth in the following years/decades, this research investigates whether China's existing environmental protection measures have yielded the desired results of green growth and whether China is on the right track towards achieving its set emission reduction target by 2020. This study will provide much needed evaluation of the effectiveness of China's current low carbon development policies and measures. It will also provide policy advice for the Chinese government in terms of transition from the current GDP-focused economic growth pattern to a green growth trajectory. Given the lack of widely-recognized measures of green growth in the literature, this study will deepen our understanding of how to measure green growth and contribute to the methodology of investigating country-specific green growth research.

The present study proceeds as follows. The next section introduces our dataset. In particular, we spell out our construction of China's green growth rate which is compatible with the OECD framework. Section 3 sketches the dynamic spatial panel model. Section 4 reports estimation results to answer our research questions and provide discussion and explanations. Possible implications for policy making are suggested in Section 5.

2. Data

We construct a balanced panel including 30 provinces over the period 1997-2011. We first follow OECD's (2011) framework to calculate the provincial green growth index in China. Specifically, as seen in Figure 1, green growth in a province i at time t is

composed of four dimensions: the socio-economic context and characteristics of growth, environmental and resource productivity, natural asset base, environmental quality of life, and economic opportunities and policy responses.

[Figure 1]

OECD (2011) proposes 23 categories to describe the whole system and lists possible indicators for each dimension (see pp. 139-140 of OECD, 2011). Huang and Quibria (2013) apply Principal Component Analysis (PCA) to 22 indicators which are highly relevant, analytically sound and currently available and measurable by OECD (2011) to extract a Green Growth Index for 36 OECD countries plus BRIICS (Brazil, Russia, India, Indonesia, China and South Africa), and examine the correlates of national green development potential from the perspective of structural reform. Similarly, the present study selects comparable indicators for 30 Chinese provinces over the period 1997-2011. Table 1 lists detailed variable definitions and data sources.

[Table 1]

We then apply the PCA to our indicators. The first component explains 44%-57% of the variance of the green growth components in various study years. The green growth rate is calculated as the growth rate of provincial green index. Table 2 lists descriptive statistics for our constructed green growth rates and all independent variables used in following analyses.

[Table 2]

Our constructed green growth rates suggest an initial increase followed by a decreasing trend over time. Figure 2 draws the cumulative distribution function (c.d.f.) of provincial green growth rates in some selected years within our study period. It can be seen clearly that provincial green growth rates at the beginning of our study time period in 1998 were negative (except in one province, Qinghai). Since then, the c.d.f.

curve had moved toward the right-hand side until 2000, meaning that more provinces switched to positive green growth rates along with economic development over time and none of them experienced negative green growth in 2000. However, about 20% of provinces during the first half of the 2000s saw retarded green growth, as the c.d.f. curve slid to the left again and part of the curve was left of zero green growth rates. In the second half of the 2000s, the c.d.f. curve swung around zero, and essentially there was no further progress in green growth. The c.d.f. curve in 2011 was far left of that in 2000 and green development was retarded in two provinces (6.7%).

[Figure 2]

Figure 3 shows the pattern of green growth in Chinese provinces over the period 1998-2011. All provinces sacrificed their green development in 1998, showing negative green growth rates. Moreover, there was an inverted U shape between income levels and green growth in 1998. The higher the level of income in terms of GDP per capita for the province, the lower the green growth rate. This further lends support to our suspicion that green development in the overwhelming majority of sample provinces in the late 1990s gave way to income growth. Nevertheless, as income kept increasing, the province would ultimately put more emphasis on green growth in terms of less negative green growth rates reflected by Beijing, Tianjin and Shanghai in the very right part of Figure 3(a). This might explain why in later years, we observe positive green growth rates for many provinces. For example, as shown in Figure 3(b), the overwhelming majority of provinces enjoyed increases in the green index. Alarmingly, however, this reciprocal relationship between economic and green growth at higher income levels disappeared in 2011. Figure 3(b) also shows that the higher the income, the lower the green growth rate, although the magnitude of green growth rates for most provinces became positive. Beijing still had a negative green

growth rate, even though its real GDP per capita had grown 2.4 fold from 1998 to 2011. If the current pattern continues, the current positive green growth rates in most provinces will be corroded further and even drop below zero.

[Figure 3]

We average provincial green development indices in each year to obtain China's average green development level. The national green growth rate is then calculated based on the annual average green development level. As shown in Table 7 later in Section 4.2., China experienced high green growth rates (97.5% per annum) in 1999 and 2000. After accession to WTO in 2000, the annual green growth rate dropped sharply to 2.56%. It rebounded to 9.5% during the 2007-2009 financial crisis when recession happened in most developed and in the main developing economies. Recently green growth rate has declined again along with economic repercussion. East and west China experienced higher green growth compared to the central region compared to the central region as East had the benefit of a better living environment and West was endowed with more natural resources.

3. Methodology

3.1. Modeling spatial dynamics of green growth

We begin by estimating a naïve regression for the pooled cross section. The province i 's green growth rate at time t , ΔGI_{it} , is regressed on its own time lag and the lagged level of green development, $GI_{i,t-1}$:

$$\Delta GI_{it} = \beta_0 + \beta_1 \Delta GI_{i,t-1} + \beta_2 GI_{i,t-1} + \varepsilon_{it} \quad (1)$$

where the disturbances $\varepsilon_{it} \square N(0, \sigma^2)$ satisfy an *i.i.d.* normal distribution. Eq. (1) is estimated by the standard OLS and instrumental variable (IV) procedures with the two

and three time periods lag of green growth rates being the excluded instruments for $\Delta GI_{i,t-1}$. Then, we consider the possible inter-provincial influence in provinces' green development and insert a spatially lagged term into (1) to reflect the impact of i 's neighboring provinces' green growth on its own growth trajectory:

$$\Delta GI_{it} = \beta_0 + \beta_1 \Delta GI_{i,t-1} + \beta_2 GI_{i,t-1} + \rho \sum_{j=1}^N w_{ij} \Delta GI_{jt} + \varepsilon_{it} \quad (2)$$

$W_{30 \times 30}$ is a matrix symbolizing the connections between provinces and thus, $i, j \in \{1, \dots, 30\}$. Specifically, we define two kinds of spatial matrices for Eq. (2) to take care of possibly different influences across neighboring provinces. First, a contiguity matrix takes the form as:

$$w_{ij} = \begin{cases} 1 & \text{if } d_{ij} \leq \theta \\ 0 & \text{if } d_{ij} > \theta \text{ or } i = j \end{cases} \quad (3)$$

where d_{ij} is the distance between provinces i and j in kilometers. Provinces i and j are labeled as “neighbors” with $w_{ij} = 1$ if the distance between them is less than the threshold θ .⁵ Each row in $W_{30 \times 30}$ is normalized so that the sum of w_{ij} in row is one. Row standardization addresses the issue raised by Plümper and Neumayer (2010) that the potential influences might become proportionally smaller for those who have a larger number of neighbors. Second, there might be the “decaying” effect: the longer

⁵ The maximum distance between two neighboring provinces in our sample is 1,261.72km. It restricts our cut-off to at least this value in order to let every sample province have at least one neighbor. Therefore, we chose 1,500km as the cut-off in main analyses and also experimented with longer distances at 800km, 2,000km, 2,500km and 3,000km with inverse-distance spatial matrices in Column 9 of Table 4, which is our preferred specification for forecast. As expected, $\hat{\rho}$ is 2.432 when $d=800$ km and reduces to 0.093 as d increases to 3,000km, but without statistical significance.

the distance between i and j , the less influence could diffuse. Empirically, the elements in this distance-decay spatial matrix are calculated as:⁶

$$w_{ij} = \begin{cases} \frac{1}{d_{ij}} & \text{if } d_{ij} \leq \theta \\ 0 & \text{if } d_{ij} > \theta \text{ or } i = j \end{cases} \quad (4)$$

Again, the final $W_{30 \times 30}$ in regression is row standardized. Eq. (2) can be estimated by maximum likelihood estimation (MLE) as Anselin (2007) and generalized two stage least square (GS2SLS) developed by Kelejian and Prucha (1998, 1999, 2004). GS2SLS consists of four steps: (i) estimating the parameter vector $\{\boldsymbol{\beta}, \rho\}$ in Eq. (2) a by two stage least squares using the first and second order spatial lags $\{\mathbf{WZ}, \mathbf{W}^2\mathbf{Z}\}$ as the excluded instruments;⁷ (ii) computing residuals $\mathbf{e}_{j,n}$ after transforming the model by the Cochran-Orcutt type; and (iii) estimating the transformed model by generalized moment conditions proposed in Kapoor *et al.* (2007).

So far we have examined pooled cross sections. Next, we exploit the panel data to better reflect provincial unobserved time-invariant factors that may affect their green growth trajectories. Controlling provincial fixed effects also helps us purge spurious spatial dependence, as the genuine interdependence across “neighboring” provinces may be overstated by similar growth strategies, economic structure, cultural

⁶ As a robustness check, we also experimented Column 9 of Table 4 with higher orders in the denominator, e.g., $\frac{1}{d_{ij}^2}$ where $d=1,500\text{km}$ and the decaying speed of spatial dependence is accelerated

with longer distance than that of Eq. (4). $\hat{\rho}$ declines to 0.039 and statistically insignificant.

⁷ Kelejian and Prucha (1998) used all spatial lags as instruments. Here we restrict the spatial order to two as suggested by Fingleton and Le Gallo (2008) and do not include all explanatory variables in calculating the second order spatial lags in order to avoid over-identification.

and institutional environment shared by certain provinces.⁸ We first re-estimate Eq. (1) with provincial fixed effects:⁹

$$\Delta GI_{it} = \beta_0 + \beta_1 \Delta GI_{i,t-1} + \beta_2 GI_{i,t-1} + \nu_{it} \quad (5)$$

where the composite error ν_{it} contains a province-specific time-invariant effect α_i and an *i.i.d.* normally distributed disturbance $\varepsilon_{it} \square N(0, \sigma_i^2)$, $\nu_{it} = \alpha_i + \varepsilon_{it}$.¹⁰ As the pooled cross section, Eq. (5) can be consistently estimated by the standard OLS after phasing out spatial dependence. Next, the interplay between neighboring provinces is inserted as:

$$\Delta GI_{it} = \beta_0 + \beta_1 \Delta GI_{i,t-1} + \beta_2 GI_{i,t-1} + \rho \sum_{j=1}^N w_{ij} \Delta GI_{jt} + \alpha_i + \varepsilon_{it} \quad (6)$$

where ε_{it} follows an independent but not necessarily identical normal distribution across i and t . As the pooled cross section, we implement the standard OLS, IV, and GS2SLS estimation with the instruments being the first two orders of the spatial lag term.¹¹ We also adopt two additional methods to estimate Eq. (6), in an effort to obtain robust results. First, as Huang and Quibria (2013), we employ a spatially-corrected system generalized method of moments (Spatial SYS-GMM) developed

⁸ In addition, common shocks may also be mistaken as spatial dependence which induces an upward bias in the estimated spatial dependence (Plümper and Neumayer, 2010). We will control explicitly for time trend and weather and political shocks in Columns 3-4 and 7-8 of Table 5. Significant and positive spatial dependence can be reaffirmed.

⁹ The Hausman tests based on the specifications of Columns (5) and (9) in Table 4 show that the null hypothesis that there are no systematic difference between the fixed- and random-effects models is firmly rejected at 1% significance level.

¹⁰ Here our specification does not include time fixed effects. Given the relatively large T in our dataset, the number of instruments in IV, GS2SLS and SYS-GMM estimation will be easily higher than 50 even we just use at most the 3rd order time lags. Weak- and over-identification problems indicated by the F-statistics and Sargan tests always exist when we re-estimated Eqs. (5) and (6) with time fixed effects. Although using more instruments could improve efficiency, Jin and Lee (2013) warn that bias also arises in finite samples, making the inference inaccurate. We tried to balance the trade-off between variance and bias by controlling a natural logarithmic time trend rather than a full list of time fixed effects when identifying the determinants of green growth in Eq. (8). However, this is not immune to problems, but is rather at the expense of the assumption of increasing marginal effects of unobserved time effects on green growth rates.

¹¹ The number of orders of spatial lag used as excluded instruments is selected based on the over- and weak identification tests.

initially by Arellano and Bover (1995) and Blundell and Bond (1998) and recently extended to spatial panel models by Elhorst (2010), while only using the 2nd and 3rd period lags of the spatial term as the excluded instruments.¹²

Second, assuming the *i.i.d.* normal distribution of ε_{it} , we apply Lee and Yu's (2010a) transform approach for the MLE and obtain consistent estimation of individual effects in the finite sample. The data are transformed to the deviation from the time mean before estimation to eliminate the individual effects. Therefore, the effective sample size becomes $N(T-1)$ and the consistent estimators for Eq. (6) can be obtained by maximizing the following log-likelihood function:

$$\ln L(\boldsymbol{\beta}, \rho, \sigma_v^2) = -\frac{N(T-1)}{2} \ln(2\pi) - \frac{N(T-1)}{2} \ln(\sigma_v^2) - \frac{1}{2\sigma_v^2} \sum_{t=1}^{T-1} \mathbf{e}^* \mathbf{e}^* + (T-1) \ln |\mathbf{I}_n - \rho \mathbf{W}| \quad (7)$$

where $\mathbf{e}^* = (\mathbf{I}_N - \rho \mathbf{W})^{-1} \mathbf{X}^* \boldsymbol{\beta} - \mathbf{X}^* \boldsymbol{\beta}$ is the residual vector at the maximizers.

As stated in Section 1, this paper also aims to identify correlates of China's green growth. We proceed to regress the provincial green growth rates on additional controls in the vector \mathbf{X} at $t-1$, which helps mitigate the potential endogeneity problem:

$$\Delta GI_{it} = \beta_0 + \beta_1 \Delta GI_{i,t-1} + \beta_2 GI_{i,t-1} + \rho \sum_{j=1}^N w_{ij} \Delta GI_{jt} + \beta_3 \mathbf{X}_{t-1} + \alpha_i + \varepsilon_{it} \quad (8)$$

It is worth noting that we only include a few crucial structural variables in \mathbf{X}_{t-1} . The one reason for not controlling many variables such as demographic and macroeconomic changes (e.g., population growth and GDP per capita) pertains to our construction of GI . It has already incorporated many socio-economic aspects given its

¹² Elhorst (2010) used all time lags as instruments, but Lee and Yu (2010b) find that too many instruments tend to make estimators inconsistent. Given the long time span in our dataset, we only included the 2nd and 3rd time period lags as the excluded instruments to limit the total number of instruments and therefore could avoid weak- and over-identification problems that often mar spatial model estimation (Gibbons and Overman, 2012), especially under SYS-GMM (Roodman, 2009).

definition, including data on population and GDP. Multicollinearity will arise if using them again as independent variables. The other reason is that we focus on whether certain structural reforms could facilitate green growth, considering that structural transformation has featured in China's reform since 1978 and boosted economic growth. See Knight and Ding (2012) for a comprehensive empirical analysis and Zhu (2012) for a recent review.¹³ Given data availability and the components having appeared in GI , \mathbf{X}_{t-1} includes innovation, green economic structural reforms (e.g., the output value from reutilization of industrial waste, the output value from total environmental protection industry, the high-tech firms' output value and green trade openness), and possible political and natural shocks that may alter the provincial green footprint. Detailed definition and calculation of these variables have been listed in Table 2.

Based on the estimates of Eq. (8), we further study the marginal effects of various structural and shock variables on provincial green growth. In the presence of spatial dependence, these variables could influence green growth directly or indirectly transmitted through spatial interaction across provinces. Specifically, according to LeSage and Pace (2009) and Elhorst (2013), we calculate the short-term total marginal effect of a unit change δ in one correlate \mathbf{x}_k simultaneous in all provinces as:

¹³ Structural reforms in China (including economic, political and institutional aspects) and their impact on economic growth have been studied as unbalanced development strategies including retaining shares of state ownership in high linkage sectors but retreating from low linkage sectors (Holz, 2011); reallocation of labor force across sectors (de Vries *et al.*, 2012); trade openness and liberalization (Rodrik, 2006); bank productivity growth (Chang *et al.*, 2012); financial deepening, awareness of property rights, legal environment and political pluralism (Hasan *et al.*, 2009); land institutions in terms of the recognition of land rights facilitating moving off the farm and agricultural productivity growth (Deining *et al.*, 2012; Dekle and Vandenbroucke, 2012).

$$\begin{aligned}\frac{\partial \bar{\Delta}GI_i(\mathbf{x}_k)}{\partial x_{ik}} &= \frac{\partial \bar{\Delta}GI_i(\mathbf{x}_k + \delta \mathbf{u})}{\partial \delta} \\ &= \frac{\partial \bar{\Delta}GI(x_{1k} + \delta, \dots, x_{i-1,k} + \delta, x_{ik} + \delta, x_{i+1,k} + \delta, \dots, x_{nk} + \delta)}{\partial \delta}\end{aligned}\quad (9)$$

where $\mathbf{u} = [1, \dots, 1]'$ is a vector of ones. The vector containing all total marginal effects

$$\text{is calculated in reduced-form } \left[\frac{\partial \bar{\Delta}GI_1(\mathbf{x}_k)}{\partial x_{1k}}, \dots, \frac{\partial \bar{\Delta}GI_N(\mathbf{x}_k)}{\partial x_{Nk}} \right] = (\mathbf{I}_N - \hat{\rho} \mathbf{W})^{-1} \hat{\beta}_k .$$

Averaging Eq. (9) across all provinces $i = 1, \dots, N$ yields the average total marginal effect (ATME):

$$\begin{aligned}\frac{1}{N} \sum_{i=1}^N \frac{\partial \bar{\Delta}GI_i(\mathbf{x}_k)}{\partial x_{ik}} &= \frac{1}{N} \sum_{i=1}^N \frac{\partial \bar{\Delta}GI_i(\mathbf{x}_k + \delta \mathbf{e})}{\partial \delta} \\ &= \frac{1}{N} \sum_{i=1}^N \frac{\partial \bar{\Delta}GI(x_{1k} + \delta, \dots, x_{i-1,k} + \delta, x_{ik} + \delta, x_{i+1,k} + \delta, \dots, x_{nk} + \delta)}{\partial \delta} \\ &= \frac{\hat{\beta}_k}{N} \sum_{i=1}^N \sum_{j=1}^N (\mathbf{I}_N - \hat{\rho} \mathbf{W})^{-1}\end{aligned}\quad (10)$$

The average total effect is made of two components. When changing \mathbf{x}_k sequentially in each province, say for i first, we obtain the direct marginal effect as follows

$$\frac{\partial \bar{\Delta}GI(\mathbf{x}_k)}{\partial x_{ik}} = \frac{\partial \bar{\Delta}GI(\mathbf{x}_k + \delta_i)}{\partial \delta} = \frac{\partial \bar{\Delta}GI(x_{1k}, \dots, x_{i-1,k}, x_{ik} + \delta_i, x_{i+1,k}, \dots, x_{nk})}{\partial \delta}\quad (11)$$

Averaging the above province-specific direct marginal effect of \mathbf{x}_k across all provinces gives our measure of average direct marginal effect (ADME):

$$\begin{aligned}\frac{1}{N} \sum_{i=1}^N \frac{\partial \bar{\Delta}GI(\mathbf{x}_k)}{\partial x_{ik}} &= \frac{1}{N} \sum_{i=1}^N \frac{\partial \bar{\Delta}GI(\mathbf{x}_k + \delta_i)}{\partial \delta} \\ &= \frac{1}{N} \sum_{i=1}^N \frac{\partial \bar{\Delta}GI(x_{1k}, \dots, x_{i-1,k}, x_{ik} + \delta_i, x_{i+1,k}, \dots, x_{nk})}{\partial \delta} \\ &= \frac{\hat{\beta}_k}{N} \sum_{i=1}^N (\mathbf{I}_N - \hat{\rho} \mathbf{W})^{-1}\end{aligned}\quad (12)$$

At the same time, in the presence of inter-provincial linkage, the change in \mathbf{x}_k in the province i may also affects its neighbors. This average indirect marginal effect (AIME)

influence can be measured by the difference between the average total (Eq. 10) and direct (Eq. 12) marginal effects:

$$\frac{\hat{\beta}_k}{N} \sum_{i=1}^N \sum_{\substack{j=1 \\ i \neq j}}^N (\mathbf{I}_N - \hat{\rho} \mathbf{W})^{-1} \quad (13)$$

In the long run where $\Delta GI_{i,t-1} = \Delta GI_{it} = \Delta GI_i^*$ and

$\sum_{j=1}^N w_{ij} \Delta GI_{j,t-1} = \sum_{j=1}^N w_{ij} \Delta GI_{jt} = \sum_{j=1}^N w_{ij} \Delta GI_j^*$, the provincial total marginal effects are

$$\left[\frac{\partial \overline{\Delta GI}_1(\mathbf{x}_k)}{\partial x_{1k}}, \dots, \frac{\partial \overline{\Delta GI}_N(\mathbf{x}_k)}{\partial x_{Nk}} \right] = \left((1 - \hat{\beta}_1) \mathbf{I}_N - \hat{\rho} \mathbf{W} \right)^{-1} \hat{\beta}_k \quad \text{for } k \neq 1. \quad \text{Averaging it}$$

across all provinces gives us the long-term ATME, $\frac{\hat{\beta}_k}{N} \sum_{i=1}^N \sum_{j=1}^N \left[(1 - \hat{\beta}_1) \mathbf{I}_N - \hat{\rho} \mathbf{W} \right]^{-1}$.

Similarly, the long-term ADME and AIME are calculated as

$$\frac{\hat{\beta}_k}{N} \sum_{i=1}^N \left[(1 - \hat{\beta}_1) \mathbf{I}_N - \hat{\rho} \mathbf{W} \right]^{-1} \quad \text{and} \quad \frac{\hat{\beta}_k}{N} \sum_{i=1}^N \sum_{\substack{j=1 \\ i \neq j}}^N \left[(1 - \hat{\beta}_1) \mathbf{I}_N - \hat{\rho} \mathbf{W} \right]^{-1}, \quad \text{respectively.}$$

3.2. Forecasting green growth

We precede forecasting green growth at the aggregate (country) level into the future. In line with Kholodilin *et al.* (2008) for Germany and You (2013) for China, we conduct recursively quasi out-of-sample forecasting.

In the first step, we estimate Eq. (6) based on the full sample and calculate the root mean square forecast error (RMSFE). Second, we use the first-step estimators and the observations in the last sample year 2011 to calculate the predicted green growth rate in 2012. In particular, we refer to the reduced form Eq. (6), $\overline{\Delta GI}_t = (\mathbf{I}_N - \hat{\rho} \mathbf{W})^{-1} [\Delta GI_{t-1}, GI_{t-1}, \hat{\mathbf{a}}] \hat{\boldsymbol{\beta}}$ to obtain predictions. Third, based on $\overline{\Delta GI}_{2012}$ we calculate other independent variables in 2012 and re-estimate Eq. (6) with these

new predicted observations in 2012 in the full sample. RMSFE for the entire sample period, including this new plugged-in sample year 2012, is calculated after estimation. Fourth, based on the up-dated estimators, we again calculate the predicted green growth in the last sample year 2013, ΔGI_{2013} and RMSFE for the entire time-spanned. We repeat this 1-step recursive forecasting over two decades until 2031. We will compute RMSFE in accompany to every round of forecasting to inform model performance.

4. Estimation results and discussion

4.1. Dynamics and determinants of green growth

Table 3 presents various estimators for the benchmark regressions, Eqs. (1-2), based on the pooled cross-sectional data. A significantly negative estimated coefficient of $\Delta GI_{i,t-1}$ documents a negative time dependence in green growth rate. A significantly negative estimated coefficient of $GGI_{i,t-1}$ irrespective of estimation methods heralds a β -convergence of provincial green growth rates – a tendency also observed in OECD countries by Huang and Quibria (2013). The green growth rate would decline 16.8-30.4 percentage points if the initial green development level in the province is 1% higher than before. The speed of convergence is relatively high, ranging between 18.4% per annum in Column 5 and 36.2% per annum in Column 1. This means that it could take only 2.28-4.12 years to halve the gap between initial and the steady-state green development levels at the current rate of convergence.¹⁴ Moreover, this could be interpreted as a long-run convergence process recorded globally at 1-year intervals given the pooled cross sectional data in estimation (Arbria *et al.*, 2008) and estimating

¹⁴ It is derived by the half-time equation (Caselli *et al.*, 1996): $0.5 = 1 - e^{-\gamma T}$ where γ is the rate of convergence and T is the number of years required to close half of the gap at γ . γ can be derived by solving the equation $-(1 - e^{-\gamma T}) = \hat{\beta}_2$.

Eq. (2) with spatial dependence (Columns 2-7 of Table 3) cannot change this pattern of green growth. A positive $\hat{\rho}$ in all columns suggests that a higher green growth rate in one province tends to affect positively its surrounding regions at 1%-10% significance levels under the assumption of either identical influence from neighbors (binary spatial matrix) or weakening influence from farther neighbors compared to near neighbors (inverse-distance spatial matrix). The magnitude of this positive spatial dependence in the latter case (Columns 6-7 of Table 3) is 11%-18% smaller than that in the former (Columns 3-4 of Table 3), which is predictable given the assumption of decaying spatial influence in the inverse-distance matrix.¹⁵

[Table 3]

When considering province fixed effects and estimating Eq. (5), we find again negative signs for $GGI_{i,t-1}$ with high significance levels (Column 1 of Table 4) but with larger magnitude in absolute terms. In other words, the rate of convergence to a steady state increases to 23.4%-165% per annum (Columns 8-9, respectively). In comparison with the pooled cross section, this rate of convergence could be understood as a *global* process. The time dependence in green growth rate becomes smaller than that of the pooled cross section as a result of inclusion of province fixed effects.

[Table 4]

However, various tests for homoscedasticity in residuals, such as Hall-Pagan LM test, Harvey LM test, Breusch-Godfrey test, Wald test, and White test, are all firmly rejected at 1% significance level, indicating unignorable correlates to green growth that have been missed in the model specification. We further specify two

¹⁵ The only exception is the IV estimator of spatial dependence: it is larger in the inverse-distance spatial matrix. However, Column 5 of Table 3 is susceptible to overfitting the endogenous variable as the Sargan test is highly close to 1. This signals that the power of Sargan test may well be dampened in the finite sample with too many instruments (Roodman, 2009).

different processes of spatial dependence and estimate Eq. (6) in Columns 2-5 and 6-8 of Table 4, respectively. Positive spatial influence in the progress to green growth is confirmed again, while we lose statistical significance under the assumption of homogenous influence from all neighbors (Columns 2-4 of Table 4). In contrast, strong and positive spatial dependence in green growth rates is still statistically significant under a more flexible assumption of decaying spatial spillover.

Furthermore, by comparing RMSEs in Tables 3 and 4, we can find that all columns in Table 4 generate lower RMSEs and better goodness-of-fit in terms of higher R^2 . This implies that provincial time-invariant unobservables may also play an important role in explaining dynamics of its green growth. Based on Column 9 of Table 4 where there are a flexible assumption of decaying spatial dependence and a lower RMSE, we derive provincial fixed effects in Figure 4. Their non-trivial magnitude (6.2-9.86) means that models overlooking provincial fixed effects such as those in Table 3 may suffer from potentially severe omitted variable problems. We will return to the impact of overlooking provincial fixed effects when implementing forecasts in Section 4.3.

[Figure 4]

4.2. Determinants of green growth

The performance of different estimation strategies in Table 4 suggests that GS2SLS produce more efficient estimators compared the other four, while MLE results in the smallest RMSE and therefore would be most suitable for forecasting. Therefore, we use GS2SLS to estimate the determinant regression, Eq. (8). Table 5 reports the estimated coefficients.

[Table 5]

There is again a strongly negative estimated coefficient of $GGI_{i,t-1}$ under all estimation strategies, indicating a conditional convergence process in provincial green growth. The speed of convergence is further enhanced to 141%-276% per annum compared to that in dynamic spatial model in Table 4. We also calculate three different marginal effects in Table 6, based on the estimates of Columns 7 and 8 of Table 5 which assume inverse-distance spatial matrix and incorporate all relevant correlates of green growth. High speed of convergence results in large ATMEs of initial level of green development (-0.946 to -7.411 in Columns 1 and 4 of Table 6). The Broadly significant and positive influence of green growth across neighboring provinces is also reaffirmed, except the MLE. However, its magnitude varies substantially between GS2SLS and MLE. The latter generates trivial spatial dependence without statistical significance. As a result, effects from neighboring provinces (AIMEs) dominate ATMEs under GS2SLS, while the marginal effects basically come from the province itself (ADMEs) under MLE.

[Table 6]

We give particular attention to structural reforms when investigating the determinants of green development given their important roles in fueling China's economic growth. It can be seen from Columns 1 and 5 of Table 5 that innovation, in addition to its positive role in promoting economic growth (Ding and Knight, 2011), propels green growth as well. Columns 1 and 4 of Table 6 show that a 1% increase in total investment in innovation would add 0.058-2.118 percentage points to the short-term green growth rate. R&D investment made by individual firms is also positively associated with green growth rates, but lacks statistical significance (Columns 2 and 6 of Table 5). We also replaced the total R&D expenditure by natural logarithmic local governments' fiscal support for science and technology and re-estimated Columns 1

and 5.¹⁶ The estimated coefficients of government support are 0.03 and 0.05 at 10% significance level under binary and inverse spatial matrices, respectively. The above findings suggest that in general, the mounting innovation efforts bring at most moderate increases in green growth rates, although China has strong incentives for skills development and technological transfer and upgrading (Altenburg *et al.*, 2008). Moreover, government support in innovation activities dominates this positive impact compared to corporate R&D investment.

Green structural reforms in terms of sectoral shift is proxied first by growth in technological markets our analysis. As shown in Columns 1 and 5 of Table 5, higher transaction volumes are correlated with higher green growth rates but without statistical significance. By contrast, the sectoral shift in the form of higher output value of high-tech firms significantly promotes green growth (Columns 2 and 6 of Table 5) though the marginal effect is trivial: 1% more output value produced by high-tech firms would only add 0.005-0.193 percentage points to the speed of green development in the short run and 0.006-0.142 in the long run.

It is in general found in the existing literature that trade is beneficial for environmentally in OECD countries, while not for SO₂ and CO₂ for non-OECD countries (e.g., Managi *et al.*, 2009) and newly industrialized countries where trade openness is a long-term normal good for economic growth only (Hossain, 2011). Kozul-Wright and Fortunato (2012) further summarize two channels through which trade affects carbon emissions. For one thing, developed countries, having set up high environmental standards and having to abate greenhouse gas emissions, could relocate production to developing countries through international trade (i.e., the pollution heaven hypothesis). When exposed to international markets, developing countries

¹⁶ Data are only available for the years between 2007 and 2011.

would tend to protect their bottom line firms by lowering domestic environmental standards (i.e., race to the bottom hypothesis). For another, trade openness affects domestic environmental quality via its positive effect on economic growth.¹⁷ Domestic environment may deteriorate under the scale effect should trade openness propel economic growth. That is, expanded economic activities would require more resource input and produce more waste and pollutants (or an EKC). Environment may also be improved as a consequence of the technique and composition effects. The former argues that people would pay more attention to sustainable production patterns and firms would use cleaner production techniques. The latter states that people would have a stronger propensity to protect environment as wealth increases and the structure of the economy would be adjusted leading to different environmental pressures in the future.

Taking the existing literature into account, we distinguish between the extent and degrees of green trade openness in our analyses. Although more exposure and access to international markets are found to contribute to China's economic growth (Knight and Ding, 2012), the extent of green trade openness, proxied by the share of import and export of high-tech products and technology in GDP, appears to be negatively linked to green growth but statistically insignificant (Columns 1 and 5 of Table 5).¹⁸ A one percentage point increase in green trade openness reduces green growth rates by 0.458-12.627 percentage points in the short-term and 0.966-9.277 in the long-term (Columns 1 and 4 of Table 6). We suspect that scale effects have driven this substantial negative impact. As illustrated in Figure 5, net abiotic material inputs

¹⁷ This is a contested view. For example, see Yanikkaya (2003) for negative impact of trade openness on growth and Dollar and Kraay (2004) for positive impact in developing countries.

¹⁸ We cannot obtain consistent results if using an indicator for overall trade openness, i.e., the ratio of the sum of provincial import and export over provincial GDP. When re-estimating Column 5 of Table 5 with this overall measurement, the GS2SLS estimator is 0.512 at 5% significance level, while the MLE estimator is -0.094 and insignificant.

grew with higher GDP per capita, although their growth rate fluctuated year by year.¹⁹ The average growth rate of net use of abiotic material was 11.5% over the period 1998-2011 as opposed to 10.9% for real GDP per capita. Net biotic material inputs also increased with real GDP per capita with an average growth rate of 3.2% in the sample period, while the growth rate of the former was always below that of the latter. These facts indicate a heavy resource-dependent growth pattern in China, especially for abiotic material under the long pro-industry development strategy.

[Figure 5]

Surprisingly, the proportion of green trade openness in total trade volumes, which picks up some technique and composition effects, exhibits negative impact but again without statistical significance. The imprecise estimators may be caused by the small magnitude of our indicator: the median share of high-tech industrial import and export in total trade volume was only 0.1% in 1998 and climbed slowly to 1.2% in 2011. Due to the lack of data, unfortunately, it is not possible to construct other more representative indicator for green trade openness in addition to the high-tech industry. Given this, our finding on negative and considerable impact of green trade openness, albeit statistically insignificant, should be interpreted with caution.

Shocks are likely to disturb the conditional convergence process of green development. As shown in Columns 3 and 7 of Table 5, weather shocks tend to significantly boost green growth with the ATME being 1.586-11.148 and 1.509-8.191 percentage points in the short- and long-term, respectively (Columns 1 and 4 of Table 6). Huang and Quibria (2013) also find a similar role played by weather shocks in green growth for OECD countries. They ascribe this positive effect to possible policy interventions tailored to help the economy better recover after the hit of natural

¹⁹ There was a huge drop in abiotic material inputs in 2008 possibly because of the financial crisis.

disasters. Political shocks in terms of the reappointment of provincial political leaders retard significantly the growing trend of green development, and this is still true even after we control for the time effect (Columns 3 and 7 of Table 5). A recent reappointment of government officials would pull the provincial green growth rate by 0.197-1.748 percentage points in the short-term and 0.203-1.284 in the long-term (Columns 1 and 4 of Table 6). We also re-estimated Columns 3 and 7 of Table 5 with both concurrent and future reappointment (i.e., the reappointment to be held in one year's time), respectively. Neither of them is statistical significant. This, together with the negative impact of current reappointment, implies that green growth does not appear to coordinate with local governors' political incentives when making policy – it is economic growth that relates closely to local governors' chance of promotion (Jia, 2013) or local officials urge to earn revenue through industrialization and urbanization as recently revisited by Su *et al.* (2012). Moreover, this career concern, together with the strong negative effect of political shocks, implies that provincial governors would choose to boost quickly regional economy just after being appointed (and therefore exploit and pollute more), aiming to win the next promotion tournament. Other factors being equal, those with strong connections to other politicians are less bold in increasing pollution (Jia, 2013). It is also noteworthy that recent studies suggest local governors in urban China have begun to put pollution reduction as their priority instead of economic growth under more pressure passed down from central government and from the public who are increasingly aware of severe environmental pollution (Zheng *et al.*, 2013; Wang, 2013). Furthermore, when re-estimating Columns 4 and 8 Table 5 with the interaction between political shocks and lagged level of green development as an additional regressor, the strong and negative estimates of political shocks still hold: the estimated coefficient of the

interaction term is 0.13 and 0.122 at 5% significance level, respectively.²⁰ This means that the negative impact of shuffling is transient and may dissipate when China achieves a higher level of green development.

The above discussion also holds broadly if we re-estimate Columns 3 and 7 of Table 5 by MLE in Columns 4 and 8. As before, MLE generates the lowest RMSE across all columns.

4.3. Forecasts of green growth

We use standard OLS estimation for pooled data as the benchmark forecasts. For comparison, we use three more kinds of estimators in forecasting: (i) the OLS estimators for the standard panel data with provincial fixed effects (Column 1 of Table 4); (ii) MLE for the pooled cross sections (Column 7 of Table 3) with spatial dependence of green growth under the more realistic assumption of distance-decaying spatial influence; and (iii) MLE for panel data with provincial fixed effects and spatial dependence under the inverse spatial matrix (Column 9 of Table 4).

We implement 1-year recursive forecasting procedures stated in Section 3.2. As Kholodilin *et al.* (2008), we also calculate total RMSFE for all years at each forecasting horizon and relative RMSFE which is the ratio of total RMSFEs under the above three estimation methods over that under the benchmark (pooled OLS) forecast at each forecasting horizon. The former measures accuracy of forecasting. The latter measures the gains in accuracy compared with the benchmark case – the lower the relative RMSFE, the higher gains compared to simple pooled OLS estimation.

²⁰ By contrast, the interaction between weather shocks and lagged green development is statistically insignificant, indicating that positive impact of weather shocks may well be independent with the progress of green development.

As can be seen in Figure 6(a), there is only a trivial increase in total RMSFE for the benchmark estimation, indicating that that forecast performance under pooled OLS would not deteriorate in the longer-term and is even better than spatial model set-up in the short run. The OLS for fixed-effects panel model produces lower total RMSFEs than those of the benchmark forecasting regardless of forecasting horizons, possibly because of the inclusion of statistically significant and substantial provincial fixed effects. When considering spatial dependence, both pooled and fixed-effects models yield higher total RMSFE in short forecasting horizon, but they perform better in the longer term, as indicated by lower total RMSFE than that of the benchmark after 2025. Spatial fixed-effects model is better than the pooled one, which again may be a result of inclusion of unignorable provincial fixed effects. Moreover, the gain in using SAR-FE, which is measured by the relative RMSFE in Figure 6(b), also becomes increasingly large in the longer term as its total RMSFE decreases and the difference in relative RMSFEs between SAR-FE and the benchmark case is increasingly wider after 2015. If this trend continued, it could be expected that SAR-FE-MLE would generate an even lower total as well as relative RMSFE compared with OLS estimation with fixed-effects in the long term after 2031. In general, our model fits the findings in the existing literature that taking spatial dependence into account improves forecast performance (e.g., Baltagi *et al.*, 2014; Kholodilin *et al.*, 2008). Together with significant spatial dependence found in Tables 3-4, we select the results of SAR-FE-MLE as our preferred forecasts instead of the OLS forecasts with fixed effects.

[Figure 6]

Figure 7 depicts the observed green growth rates and all four different forecasts for China. Except drastic fluctuations prior to 2005, especially between 1999 and

2001, the national green growth rate became stable around 8% until 2011, which is very close to the annual growth rate of GDP per capita. In the out-of-sample forecasts, as shown in Figure 7, OLS with fixed effects generates continuous stable green growth around the economic growth. In contrast, growth rates forecasted by two pooled estimations (OLS without spatial dependence and MLE with spatial dependence) would drop in the first three years until 2014 and then, quickly converge to zero. Our preferred forecasts under SAR-FE-MLE also predict a cyclical pattern around zero with smaller volatilities in growth rates in longer horizon. And in most of time, forecasted green growth rates are lower than projected economic growth, which is 8% according to the World Bank.

[Figure 7]

We also draw China's prospect of green development in Figure 8. Consistent with Figure 7, only OLS estimation with fixed effects forecasts sustained green growth, which seems to synchronize with economic growth in the long-term. However, as mentioned earlier, OLS with fixed effects but without spatial dependence is likely to suffer from omitted variable problem and therefore, cannot be given much credibility. In comparison, all other three forecasting models reveal decreases in the level of green development in the near future prior to 2015. Moreover, there appears to be a cap on China's green growth in the long-term. The SAR-FE-MLE forecasts appear to be cyclical given fluctuating green growth rates, while the highest level in forecasting horizon is always below that in 2011. The average green growth rate in the next two decades would be -2.5%, which is in sharp contrast to 19.4% over the period 1998-2011. China faces potentially huge challenges if she is to step onto a green development pathway.

[Figure 8]

Consistent with our finding of insignificant differences in regional unobserved heterogeneity, our forecasts do not reveal distinct green growth across eastern, central and western China, either. As listed in Table 7, the level of green development in the East used to increase quickest prior to 2011, but would drop quickest as well among the three. Green growth rates would decline first in the near future (2012-2017) and then fluctuate and converge gradually to zero. There is an overall downward trend in average green growth rates for the country as well as three regions prior to 2025, while the average rate would rebound to a positive but tiny value afterwards.

[Table 7]

5. Conclusion

In this paper, we have constructed a green development index for 30 Chinese provinces over the period 1997-2011 according to OECD's (2011) green growth framework. By using a spatial dynamic panel model, we identify dynamics and the determinants of provincial green growth rates. There appears to be a conditional convergence in green growth across provinces. Our forecasts show that China's green development process would be retarded heavily in the long-term under current policy and economic structure. The government-led innovation and green structural reforms in terms of the growth of green (high-tech) industry at the firm-level help break the bottleneck. Weather and political shocks in terms of shuffling in provincial governments may disturb positively and negatively China's progress of green growth, respectively. Given these, China would be better able to step into a green growth path in the long-term if it could give full scope to firms' green transformation in their production, in addition to the current government efforts in massive innovation, and reconcile political incentives with the need for green growth for the whole society.

Reference

- Altenburg, T., Schmitz, H. and Stamm, A. (2008) Breakthrough? China's and India's transition from production to innovation. *World Development* 36, 325-344.
- Anselin, L. (2007) Spatial econometrics. In: T. C. Mills and K. Patterson (eds) *Palgrave Handbook of Econometrics* (New York: Palgrave MacMillan), 901-969.
- Auffhammer, M., and Carson, R. T. (2008) Forecasting the path of China's CO₂ emissions using provincial level information. *Journal of Environmental Economics and Management* 55, 229–247.
- Baltagi, B. H., Fingleton, B. and Pirotte, A. (2014) Estimating and forecasting with a dynamic spatial panel data model. *Oxford Bulletin of Economics and Statistics* 76, 112-138.
- Brajer, V., Mead, R. W. and Xiao, F. (2011) Searching for an environmental Kuznets curve in China's air pollution. *China Economic Review* 22, 383-397.
- Blundell, R. and Bond, S. (1998) Initial conditions and moment restrictions in dynamic panel data models. *Journal of Econometrics* 87, 115–143.
- Caselli, F., Esquivel, G. and Lefort, F. (1996) Reopening the convergence debate: A new look at cross-country growth empirics. *Journal of Economic Growth* 1, 363-389.
- Chen, S. (2011) The abatement of carbon dioxide intensity in China: Factors decomposition and policy implications. *The World Economy* 34, 1148-1167.
- Chen, S. and Santos-Paulino, A. U. (2013) Energy consumption restricted productivity re-estimates and industrial sustainability in post-reform China. *Energy Policy* 57, 52-60.

- Chang, T., Hu, J., Chou, R. Y. and Sun, L. (2012) The sources of bank productivity growth in China during 2002-2009: A disaggregation view. *Journal of Banking and Finance* 36, 1997-2006.
- Cole, M. A., Elliott, R. J. R. and Zhang, J. (2011) Growth, foreign direct investment, and environment: Evidence from Chinese cities. *Journal of Regional Science* 51, 121-138.
- de Vires, G., Erumban, A. A., Timmer, M. P., Voskoboynikov, I. and Wu, H. X. (2012) Deconstructing the BRICS: Structural transformation and aggregate productivity growth. *Journal of Comparative Economics* 40, 211-227.
- Deininger, K., Jin, S. and Xia, F. (2012) Moving off the farm: Land institutions to facilitate structural transformation and agricultural productivity growth in China. World Bank Policy Research Working Paper No. 5949.
- Dekle, R. and Vandenbroucke, G. (2012) A quantitative analysis of China's structural transformation. *Journal of Economic Dynamics and Control* 36, 119-135.
- Ding, S. and Knight, J. (2011) Why has China grown so fast? The role of physical and human capital formation. *Oxford Bulletin of Economics and Statistics* 73, 141-174.
- Dollar, D. and Kraay, A. (2004) Trade, growth, and poverty. *The Economic Journal* 114, F22-F49.
- Elhorst, J. P. (2010) Dynamic panels with endogenous interaction effects when T is Small. *Regional Science and Urban Economics* 40, 272-82.
- Elhorst, J. P. (2013) Spatial panel models. In: Fischer M.M, Nijkamp P. (eds.), *Handbook of Regional Science*. Springer: Berlin.

- Fei, L., Dong, S., Xue, L., Liang, Q. and Yang, W. (2011) Energy consumption-economic growth relationship and carbon dioxide emissions in China. *Energy Policy* 39, 568-574.
- Fingleton, B. and Le Gallo, J. (2008) Estimating spatial models with endogenous variables, a spatial lag and spatially dependent disturbances: Finite sample properties. *Papers in Regional Science* 87, 319-339.
- Gibbons, S. and Overman, H. G. (2012) Mostly pointless spatial econometrics? *Journal of Regional Science* 52, 172-191.
- Hallegatte, S., Hela, G., Fay, M. and Treguer, D. (2011). From growth to green growth: A framework. World Bank Policy Research Working Paper 5872. Washington, DC: World Bank.
- Hasan, I., Wachtel, P. and Zhou, M. (2009) Institutional development, financial deepening and economic growth: Evidence from China. *Journal of Banking and Finance* 33, 157-170.
- Holz, C. A. (2008) China's economic growth 1978-2025: What we know today about China's economic growth tomorrow. *World Development* 36, 1665-1691.
- Holz, C. A. (2011) The unbalanced growth hypothesis and the role of the state: The case of China's state-owned enterprises. *Journal of Development Economics* 96, 220-238.
- Hossain, M. S. (2011) Panel estimation for CO₂ emissions, energy consumption, economic growth, trade openness and urbanization of newly industrialized countries. *Energy Policy* 39, 6991-6999.
- Huang, Y. and Quibria, M. G. (2013) Green growth: Theory and evidence. UNU-WIDER Working Paper WP/2013/056.

- Jia, R. (2013) Pollution for promotion. *Mimeo*. Available at: http://people.su.se/~rjia/papers/pollution_V20130420.pdf [accessed 12 October, 2013]
- Jin, F. and Lee, L. (2013) Generalized spatial two stage least squares estimation of spatial autoregressive models with autoregressive disturbances in the presence of endogenous regressor and many instruments. *Econometrics* 1, 71-114.
- Kapoor, M., Kelejian, H. H. and Prucha, I. R. (2007) Panel data models with spatially correlated error components. *Journal of Econometrics* 140, 97-130.
- Kelejian, H. H. and Prucha, I. R. (1998) A generalised spatial two-stage least squares procedure for estimating a spatial autoregressive model with autoregressive disturbances. *Journal of Real Estate Finance and Economics* 17, 99-121.
- Kelejian, H. H. and Prucha, I. R. (1999) A generalized moments estimator for the autoregressive parameter in a spatial model. *International Economic Review* 40, 509–533.
- Kelejian, H. H. and Prucha, I. R. (2004) Estimation of simultaneous systems of spatially interrelated cross sectional equations. *Journal of Econometrics* 118, 27-50.
- Kholodilin, K. A., Siliverstovs, B. and Kooths, S. (2008) A dynamic panel data approach to the forecasting of the GDP of German Länder. *Spatial Economic Analysis* 3, 195-207.
- Knight, J. and Ding, S. (2012) The role of structural change: Trade, ownership, industry. In: John Knight and Sai Ding (eds.): *China's Remarkable Economic Growth*. Oxford University Press.
- Kozul-Wright, R. and Fortunato, P. (2012) International trade and carbon emissions. *European Journal of Development Research* 24, 509-529.

- Lee, L. and Yu, J. (2010a) Estimation of spatial autoregressive panel data models with fixed effects. *Journal of Econometrics* 154, 165-185.
- Lee, L. and Yu, J. (2010b) Efficient GMM estimation of spatial dynamic panel data models with fixed effects.
- LeSage, J. P. and Pace, R. K. (2009) Introduction to spatial econometrics. Boca Raton, FL: CRC Press Taylor & Francis Group.
- Lewis, J. I. (2010) The evolving role of carbon finance in promoting renewable energy development in China. *Energy Policy* 38, 2875-2886.
- Lo, A. Y. (2013) Carbon trading in a socialist market economy: Can China make a difference? *Ecological Economics* 87, 72-74.
- Managi, S., Hibiki, A. and Tsurumi, T. (2009) Does trade openness improve environmental quality? *Journal of Environmental Economics and Management* 58, 346-363.
- Munro, N. (2013) Profiling the victims: public awareness of pollution-related harm in China. *Journal of Contemporary China*, forthcoming, doi: 10.1080/10670564.2013.832532.
- OECD (2011) Towards green growth: Monitoring progress. OECD, Paris.
- Plümper, T. and Neumayer, E. (2010) Model specification in the analysis of spatial dependence. *European Journal of Political Science* 49, 418-442.
- Rodrik, D. (2006) What's so special about China's exports? *China & World Economy* 14, 1-19.
- Roodman, D. (2009) A note on the theme of too many instruments. *Oxford Bulletin of Economics and Statistics* 71, 135-158.

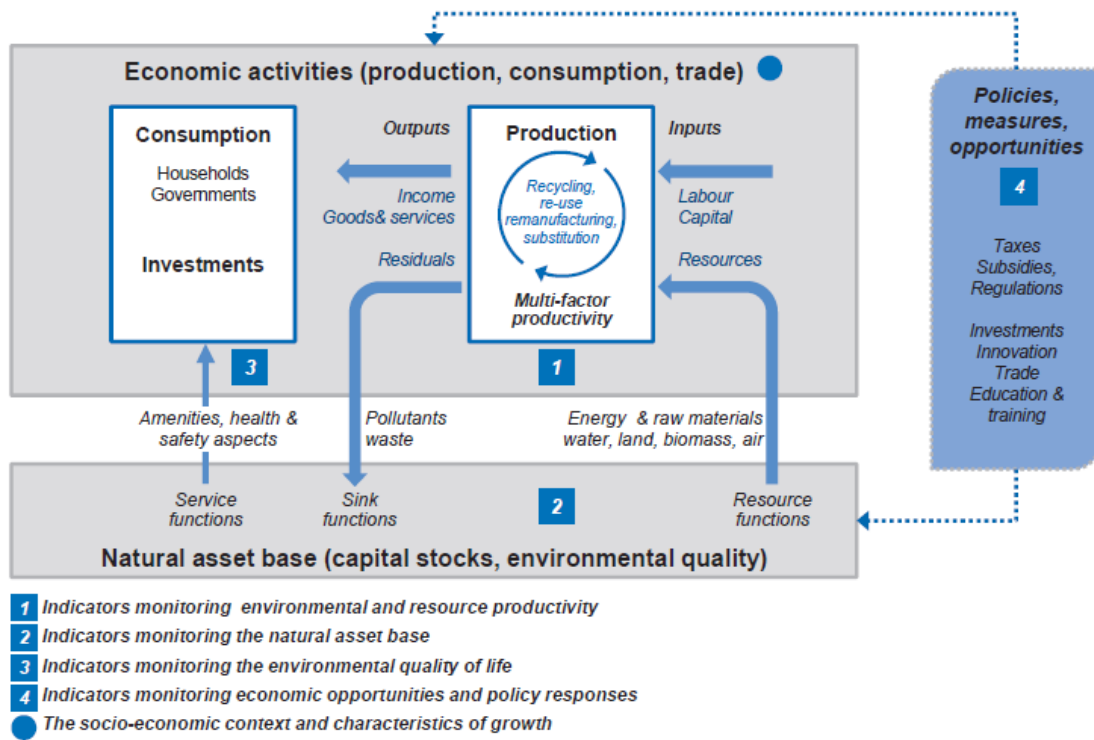
- Su, F., Tao, R., Xi, L. and Li, M. (2012) Local officials' incentives and China's economic growth: Tournament thesis reexamined and alternative explanatory framework. *China & World Economy* 20, 1-18.
- Toman, M. (2012). Green growth: An exploratory review. World Bank Policy Research Working Paper 6067. Washington, DC: World Bank.
- Wang, A. L. (2013) The search for sustainable legitimacy: Environmental law and bureaucracy in China. *Harvard Environmental Law Review* 37, 365-440.
- Wang, T. and Watson, J. (2010) Scenario analysis of China's emissions pathways in the 21st century for low carbon transition. *Energy Policy* 38, 3537-3546.
- Wang, S. S., Zhou, D. Q., Zhou, P. and Wang, Q. W. (2011) CO2 emissions, energy consumption and economic growth in China: A panel data analysis. *Energy Policy* 39, 4870-4875.
- Xue, B., Chen, X., Geng, Y., Guo, X., Lu, C., Zhang, Z. and Lu, C. (2010) Survey of officials' awareness on circular economy development in China: Based on municipal and county level. *Resources, Conservation and Recycling* 54, 1296-1302.
- Yanikkaya, H. (2003) Trade openness and economic growth: A cross-country empirical investigation. *Journal of Development Economics* 72, 57-89.
- You, J. (2013) China's challenge for decarbonized growth: Forecasts from energy demand models. *Journal of Policy Modeling* 35(4): 652-668.
- Zhang, X., Wu, L., Zhang, R., Deng, S., Zhang, Y., Wu, J., Li, Y., Lin, L., Li, L., Wang, Y. and Wang, L. (2013) Evaluating the relationships among economic growth, energy consumption, air emissions and air environmental protection investment in China. *Renewable and Sustainable Energy Reviews* 18, 259-270.

Zheng, J., Bigsten, A. and Hu, A. (2009) Can China's growth be sustained? A productivity perspective. *World Development* 37, 874-888.

Zheng, S., Kahn, M. E., Sun, W. and Luo, D. (2013) Incentives for China's urban mayors to mitigate pollution externalities: The role of the central government and public environmentalism. *Regional Science and Urban Economics*, doi: <http://dx.doi.org/10.1016/j.regsciurbeco.2013.09.003>

Zhu, X. (2012) Understanding China's growth: Past, present, and future. *Journal of Economic Perspectives* 26, 103-124.

Figure 1 Components of green growth



Source: Adopted Figure 1 on p. 17 in OECD (2011).

Figure 2 Cumulative distribution of green growth rates (1998-2011)

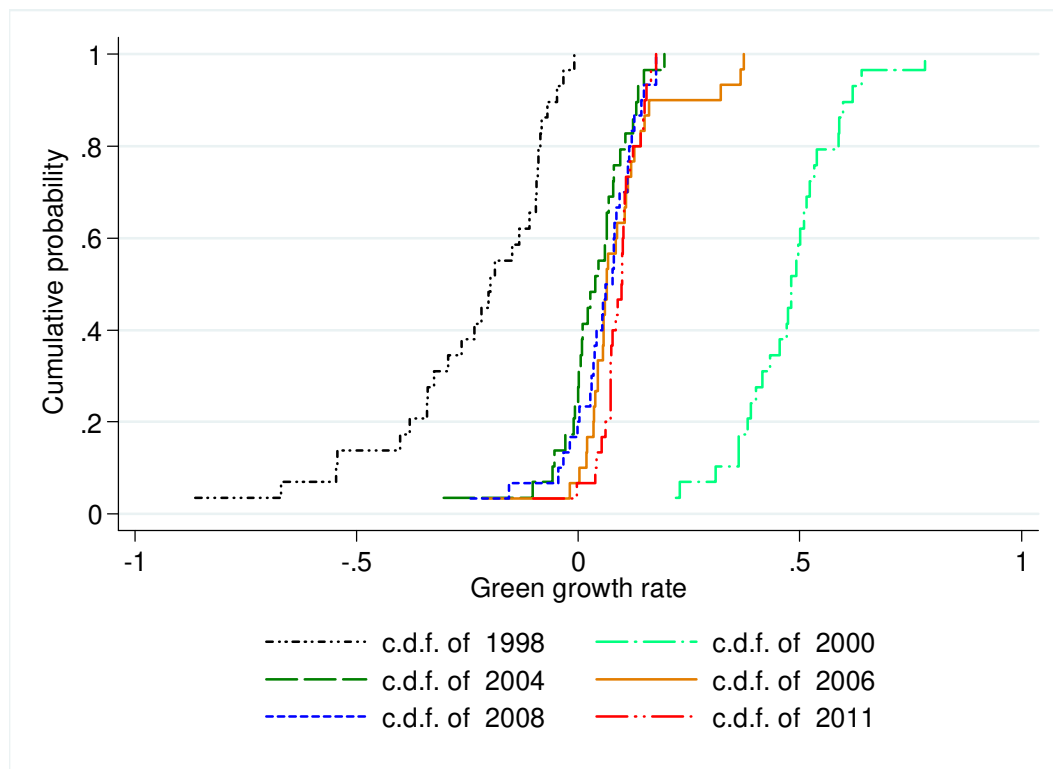


Figure 3 Relation between the green growth rate and real GDP per capita

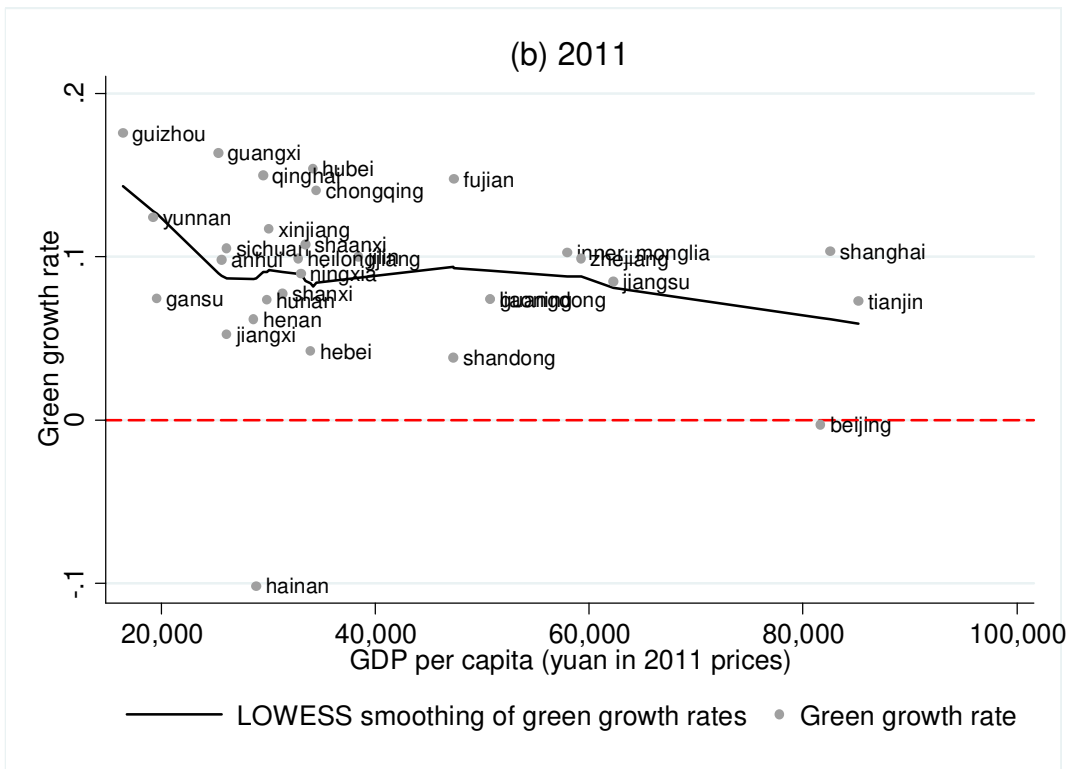
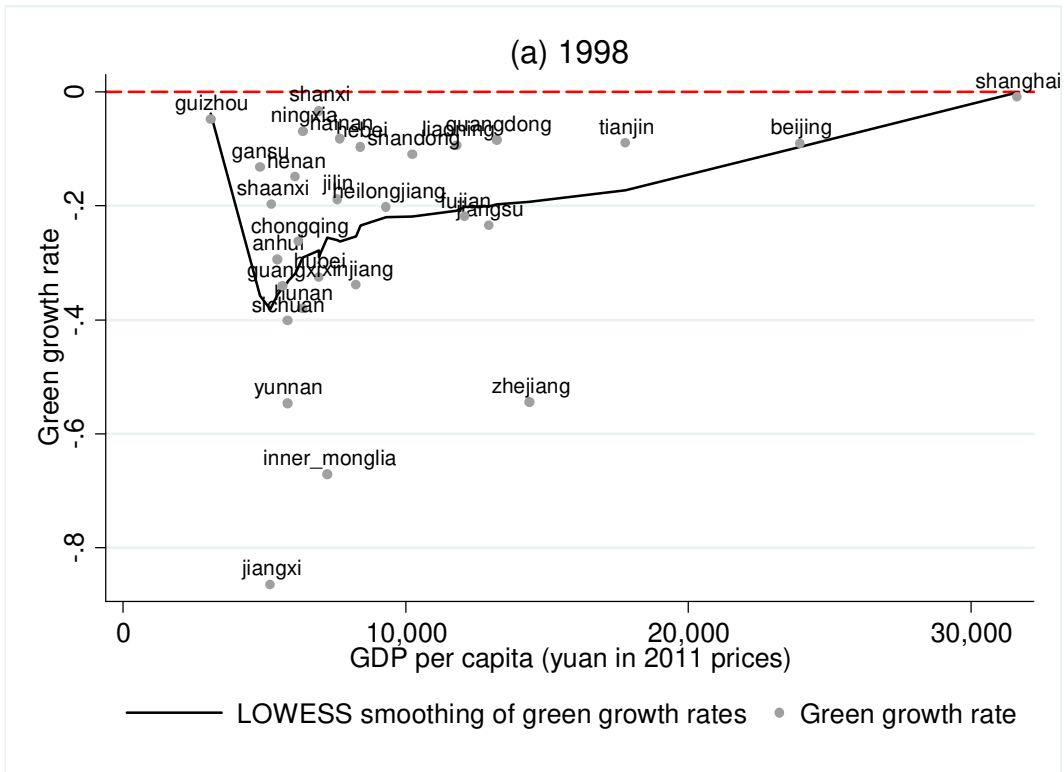
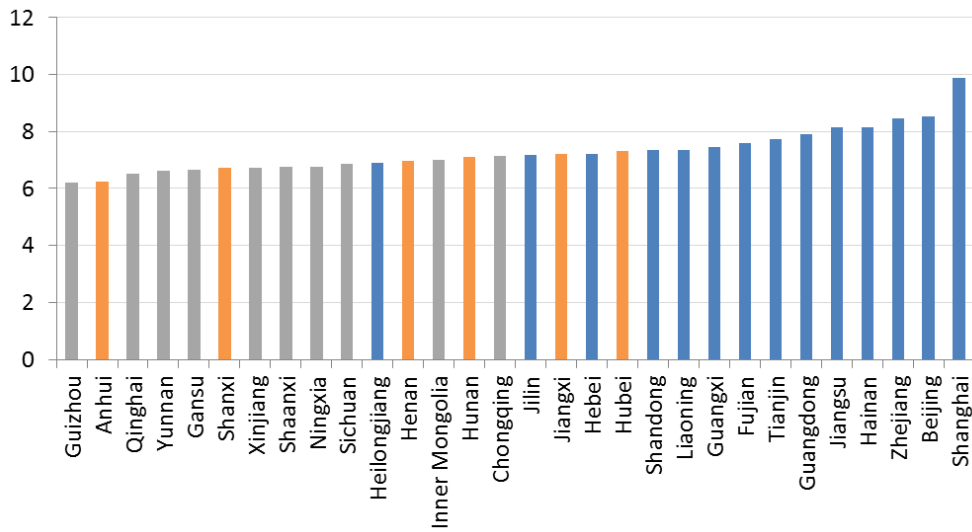


Figure 4 Estimated province fixed effects



Note: East, middle and west provinces are labeled by blue, orange and grey bars, respectively. The classification of three regions follows the NBS criteria.

Figure 5 Growth rates of GDP per capita and productivity of abiotic and biotic materials

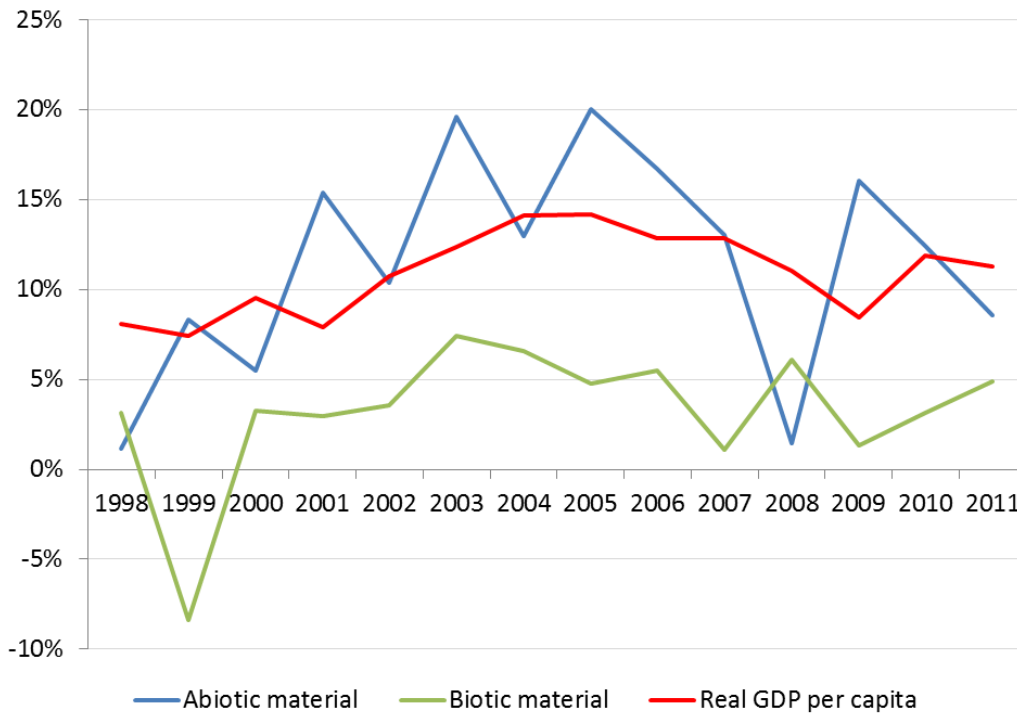
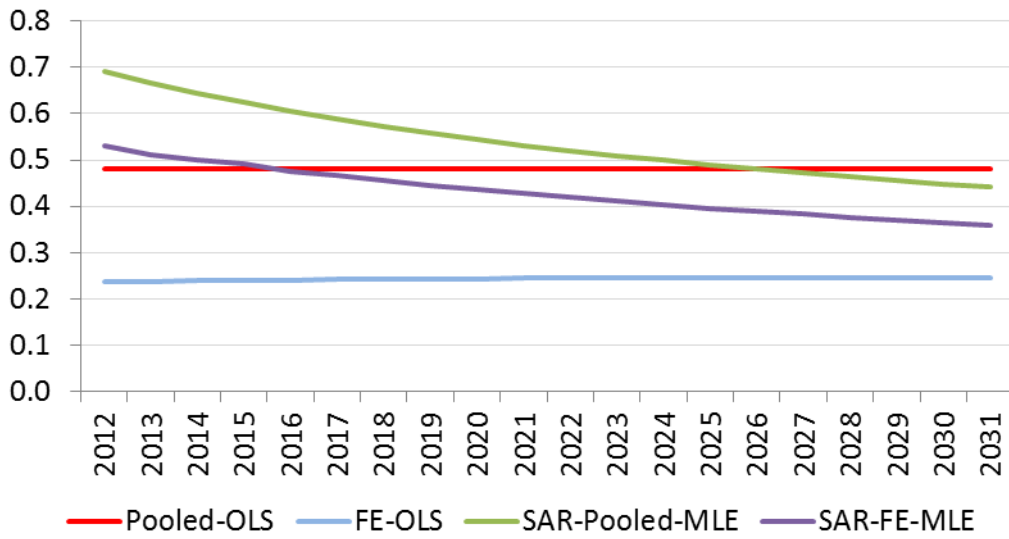


Figure 6 Forecasting performance

(a) Absolute RMSFE



(b) Relative RMSFE

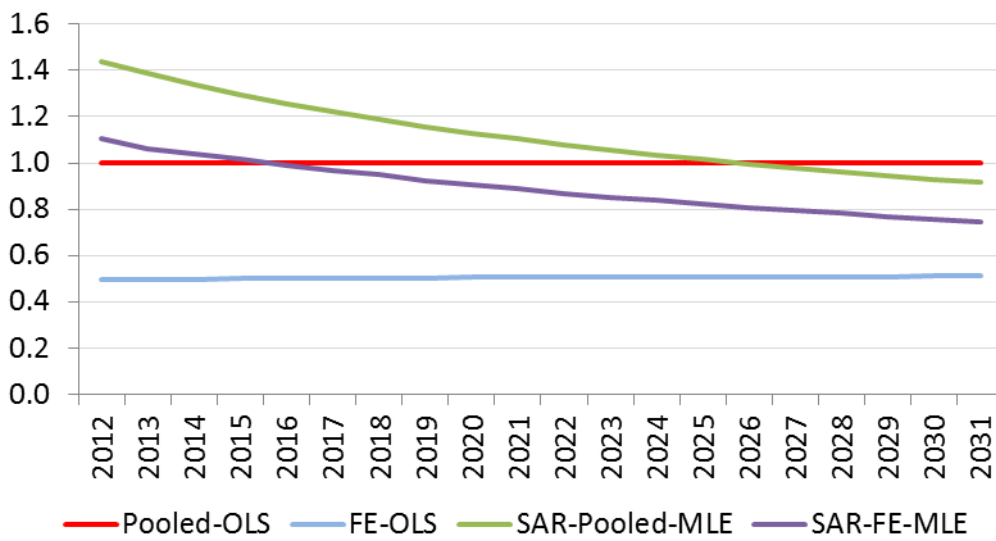


Figure 7 Forecasts of China's green growth rates

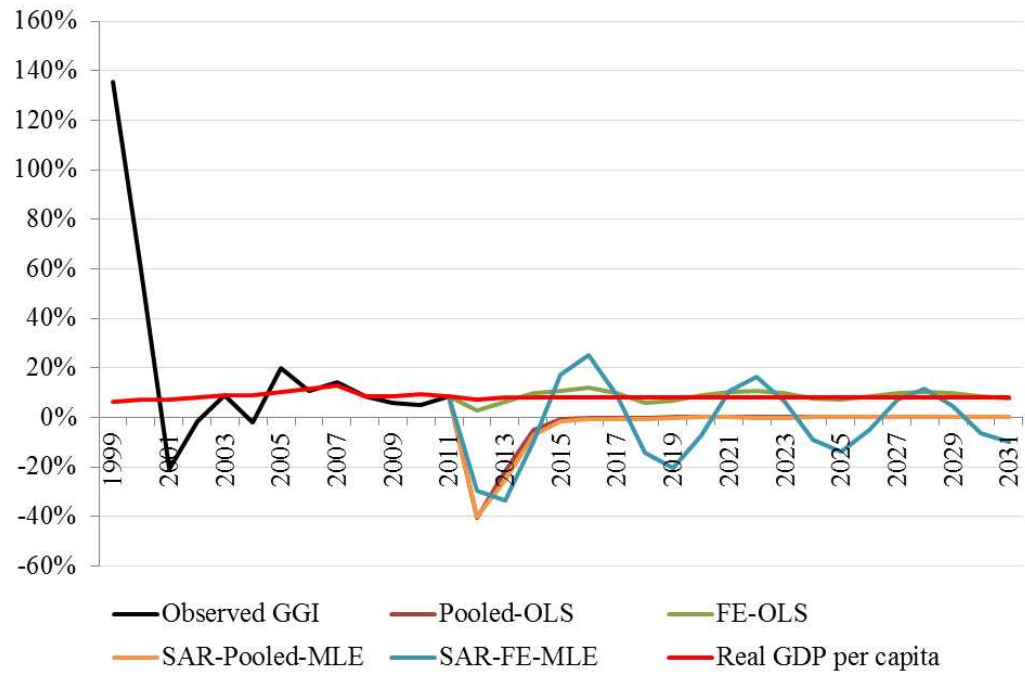
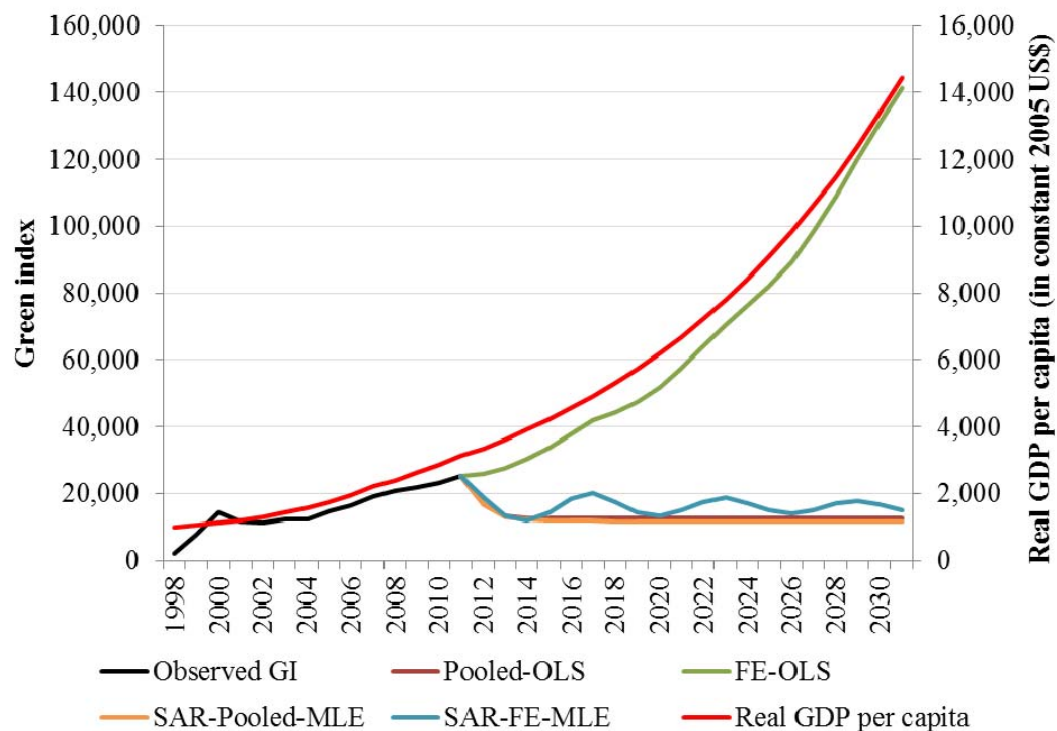


Figure 8 China's green growth vs. economic growth



Note: The data on real GDP per capita (1998-2012) come from the World Development Indicators at the World Bank and are in 2005 constant US\$. The projections of real GDP per capita are based on the forecast of 8% growth rate for China until 2014, which was released by the World Bank in June 2013 (<http://www.worldbank.org/en/news/feature/2013/06/12/Developing-world-faces-domestic-challenges-as-global-economy-stabilizes>, accessed 12 October, 2013).

Table 1 Components of China's provincial green growth index^a

Category	Indicator	Definition	Data source and/or construction procedures
1: The socio-economic context and characteristics of growth	Real GDP	Real GDP index (1997=100)	Authors' calculation based on GDP and CPI data from China Statistical Yearbooks published by the NBS.
	Population density	Inhabitants per km ²	Authors' calculation based on population and areas data from China Statistical Yearbooks published by the NBS.
2: Environmental and resource productivity	Production-based CO ₂ productivity	Real <i>yuan</i> per kg of CO ₂	We follow Auffhammer and Carson's (2008) method to estimate provincial CO ₂ emissions. Specifically, we regress the national CO ₂ emissions on the national industrial waste gas and the time control variables over the period 1997-2011 and then, use the estimated coefficients and the observed provincial industrial waste gas to calculate provincial CO ₂ emissions. To keep consistency with the OECD Green Growth Database, we draw data on China's national CO ₂ emissions from IEA Energy Database. National and provincial industrial waste gas emissions are collected from China Statistical Yearbooks.
	Energy productivity	Real GDP (in <i>yuan</i>) per ton of standard coal equivalent of total primary energy supply	Authors' calculation based on data of total primary energy supply from China Energy Statistical Yearbooks and provincial statistical yearbooks, and provincial GDP, population and CPI data from China Statistical Yearbooks.
	Energy intensity	Ton of standard coal equivalent of total primary energy supply per capita	
	Renewable energy supply	Share of renewable energy supply in total primary energy supply	Authors' calculation based on primary energy supply as obtained above and renewable energy supply. The latter comes from China Energy Statistical Yearbooks and provincial statistical yearbooks. Note that our provincial 'renewable energy supply' includes only electricity generated by hydro power, and nuclear and wind power due to data availability, while the OECD definition further includes geothermal, solar, tide and combustible renewables and waste compromises biomass.
	Non-energy material consumption	Non-energy domestic material consumption (DMC) index (1997=100)	Authors' calculation. According to OECD, non-energy DMC equals biotic materials (to be explained below) plus abiotic materials (to be explained below) plus construction materials (to be explained below). All data are measured in weight (kg) rather than monetary terms. The value in 1997 is set as 100, and all subsequent values are compared to it.
	Non-energy material productivity	Real GDP (in <i>yuan</i>) per kg of	Authors' calculation. This indicator is measured as the real GDP in China Statistical Yearbooks divided by non-energy DMC calculated above.

Biotic material productivity	<p>non-energy DMC</p> <p>Real GDP (in <i>yuan</i>) per kg of biotic material DMC</p>	<p>Authors' calculation. This indicator is measured as the real GDP in China Statistical Yearbooks divided by biotic material DMC. According to Eurostat and OECD, the biotic material DMC equals agricultural domestic production plus agricultural import minus agricultural export. All data are measured in weight (kg). Agricultural domestic production is measured as the sum of products of farm, forest, and fishing. Specifically, we incorporate rice, wheat, corn, beans, tubers, cotton, oil-bearing crops (peanuts, rapeseeds and sesame), fibre crops, sugarcane, beetroots, tobacco, silkworm cocoons, tea, fruits (apples, citrus, pears, grapes and bananas), meat (poultry, pork, beef and mutton), milk, eggs, honey, sheep wool, goat wool, cashmere, rubber, turpentine, raw lacquer, Tung-oil seeds, tea-oil seeds, walnuts, logs, sawn timber, and aquatic products (seawater and freshwater aquatic products). Relevant data come from China Statistical Yearbooks published by the NBS and China Agricultural Statistical Yearbooks published by the Ministry of Agriculture. There are no data on provincial agricultural imports and exports. According to OECD, import and export include both raw materials and semi-products, in order to reflect comprehensively material flows. We estimate provincial agricultural import and export in the spirit of Auffhammer and Carson (2008) again. Specifically, we first calculate national agricultural import, which is the sum of cereals and cereal powder, soybeans, rice, corn, wheat, cotton, vegetable oil, sugar, feed, wool, rubber, logs, sawn timber, pulp and resin, and national agricultural export, which is the sum of cereals and cereal powder, soybeans, rice, corn, cotton, ramie, raw silk, willow-, bamboo- and cane-weaving products, vegetable oil, aldose, walnut seeds, peanuts and peanut seeds, pine nuts, hazelnuts, dried beans, vegetables, meat (poultry, pork, beef and rabbit), milk, eggs, honey, tobacco, tea, fruits (apples and citrus), aquatic products, cashmere, cony wool, paper, turpentine and resin. Relevant data come from China Statistical Yearbooks published by the NBS and China Customs Statistics Yearbooks published by the General Administration of Customs of China. Then, we regress national agricultural import and export on national total import and export volumes and time control variables, respectively. We finally calculate provincial agricultural import and export by using the estimated coefficients and observed provincial total import and export volumes, respectively. Real national and provincial import and export volumes are authors' calculations based on relevant nominal and price data from China Statistical Yearbooks.</p>
Abiotic material productivity	<p>Real GDP (in <i>yuan</i>) per kg of abiotic material DMC</p>	<p>Authors' calculation. This indicator is measured as the real GDP in China Statistical Yearbooks divided by abiotic material DMC. According to Eurostat and OECD, the</p>

abiotic material DMC equals domestic metal production plus domestic non-metallic industrial minerals and construction materials plus imported metal and non-metallic minerals and construction materials minus those exported. All data are measured in weight (kg). Domestic metal production is the sum of pig iron, crude steel, rolled steel and 10 kinds of nonferrous metal. Domestic non-metallic industrial minerals are the sum of salt, plastics and sulphur. Domestic non-metallic construction materials are the sum of common clays and glass. Relevant data come from China Steel Statistical Yearbooks, China Nonferrous Metal Statistical Yearbooks, China Construction Statistical Yearbooks, and China Statistical Yearbooks of Chemical Industry. There are no data on provincial import and export of abiotic materials. According to OECD, import and export include both raw materials and semi-products, in order to reflect comprehensively material flows. We also estimate provincial import and export in the spirit of Auffhammer and Carson (2008). Specifically, we first calculate national import of abiotic materials, which is the sum of urea, copper and aluminium and their alloy, manganese, and ore sand of iron, copper, manganese and chromium. We also calculate national export of abiotic materials, which is the sum of glass, clay, pig iron, steel, steel billet and rough forging products of steel, ferrosilicon, copper, steel- and copper-made fasteners, talc, ceramics, ore sand of copper, plastics, sulphur, graphite, fluorite, and aluminium, manganese, antimony, tin, zinc and their alloy. Relevant data come from China Statistical Yearbooks and China Customs Statistics Yearbooks. Then, we regress national import and export of abiotic materials on national total import and export volumes and time control variables, respectively. We finally calculate provincial import and export of abiotic materials by using the estimated coefficients and observed provincial total import and export volumes, respectively. Real national and provincial import and export volumes are authors' calculations based on relevant nominal and price data from China Statistical Yearbooks.

3: Monitoring the natural asset base ^b	Available water resources	m ³ of total available water supply per capita	Authors' calculation based on data of total water supply and population from China Statistical Yearbooks.
	Total water abstraction	Tons of total tap water supply per capita	Authors' calculation based on data of total tap water supply and population from China Statistical Yearbooks.
4: Monitoring the environmental quality of life ^c	Urban: Sewerage density	Urban: Length of sewerage pipelines (km) per km ² of urban areas	Authors' calculation based on relevant data from China Statistical Yearbooks and China Environment Statistical Yearbooks.

5: Monitoring economic opportunities and policy responses	Public spending in environmental pollution abatement ^d	Share of public investment (in real term) in environmental pollution abatement in real GDP	Authors' calculation based on relevant investment data from China Environment Statistical Yearbooks and on GDP and price data from China Statistical Yearbooks.
	Green patent index	The index of total no. of green patent applications (1997=100)	Authors' calculation. Since there are no data on different kinds of patents at the provincial level, we draw upon estimation in line with Auffhammer and Carson (2008). Specifically, we regress the number of different kinds of national patent applications on the national total number of patent applications and time control variables. Then, we calculate different kinds of provincial patents by using the estimated coefficients and observed provincial total number of patent applications. Relevant patent data come from the Annual Statistical Reports of the State Intellectual Property Office (SIPC). Green patents are the sum of patents on electric and hybrid vehicles, energy deficiency in building and lightening, renewable energy generation, air pollution abatement, water pollution abatement and solid waste management. The total number of green patent applications in 1997 is set as 100. The total number of green patent applications in subsequent years is compared to that in 1997, which forms the green patent index.
	Patents – Electric and hybrid vehicles	Share of patents on electric and hybrid vehicles in total green patents	
	Patents – Energy deficiency in building and lightening	Share of patents on energy deficiency in building and lightening in total green patents	
	Patents – Renewable energy generation	Share of patents on renewable energy generation in total green patents	
	Patents – Air pollution	Share of patents on air pollution abatement in total green patents	
	Patents – Water pollution	Share of patents on water pollution abatement in total green patents	
	Patents – Solid waste management	Share of patents on solid waste management in total green patents	
Environment related taxes	Share of resource taxes and emission charges in GDP	Authors' calculation based on data from and GDP and price data from China Statistical Yearbooks, China Environment Statistical Yearbooks and provincial statistical books.	

Note: a. All data are at the provincial level, except those particularly stated in the Table.

b. The OECD indicator refers to fresh water, while we use total water supply and use given data availability.

c. The OECD indicator is the share of population connected to public sewerage. Given rural-urban divide in China and data availability, we use two indicators here to describe rural and urban areas, respectively.

d. The OECD indicator is the share of public spending in environmental-related R&D. There is no data on either national or provincial level public spending in environmental-related R&D in China. We use an alternative here.

Table 2 Description of variables

Variable	Definition	Data source	Mean	S. D.
Ln(green index)	Natural logarithm of constructed green index based on Table 1.	As listed in Table 1.	8.805	1.261
Green growth rate	Natural logarithmic difference between green indices at $t-1$ and t .	As listed in Table 1.	0.179	0.829
Ln(total R&D)	Natural logarithm of provincial governments' expenditure on R&D (in 100 million <i>yuan</i>).	Same as above.	3.767	1.527
Ln(high-tech firm R&D)	Natural logarithm of firms' R&D expenditure in the high-technology industry (in 10 thousand <i>yuan</i>).	Various issues of China Statistics Yearbook on High Technology Industry published by the NBS and the Ministry of Science and Technology.	10.022	2.743
Ln(transaction values in technological markets)	Natural logarithm of real values of transaction values in technological markets (in 10 thousand <i>yuan</i>). The real values are transformed from nominal values by using provincial CPI (2011 prices=100).	Same as above. The data on provincial CPI (previous year=100) come from China Statistical Yearbooks.	12.216	1.605
Ln(output value of high-tech industry)	Natural logarithm of firms' output value in the high-technology industry.	Same as above.	12.744	2.867
Scale of openness of high-tech trade	Ratio of international trades in the high-technology industry over provincial GDP. The international trades in the high-technology industry are the sum of high-technological firms' export volume plus import volume of new technologies. All variables are expressed in current prices in each study year.	Same as above. The data on provincial GDP come from China Statistical Yearbooks.	0.008	0.019
Intensity of high-tech trade in total openness	Ratio of international trades in the high-technology industry over the total international trades. The numerator is as same as the above. The denominator is the sum of the import and export volumes in each province. All variables are expressed in current prices in each study year.	Same as above. The data on provincial total import and export volumes come from China Statistical Yearbooks.	0.014	0.020
Weather shock	3-year moving average of the proportion of areas affected by natural disasters in total areas covered by natural disasters.	Various issues of China Statistical Yearbooks published by the NBS.	0.127	0.065
Environmental shock	3-year moving average of the number of environmental emergencies and crises over 15 years from 1997 to 2011.	Same as above.	35.605	49.811

Political shock	Binary variable. It takes the value of one if takes place in that year.	Authors' collection from the public from the Communist Party of China.	0.214	0.411
Ln(time)	Natural logarithm of time where the first year in the dynamic panel (1998) is set as one.	Authors' calculation.	1.799	0.747

Note: The number of observations for each variable is 420, except the green growth rates having 390 observations from 1998. Our dynamic balanced panel therefore covers the period 1999-2011 with 360 observations for each variable. All variables in use are authors' calculations or collection based on data from relevant sources.

Table 3 Baseline estimation results (pooled cross section)

Independent variable	OLS (1)	Row-std binary spatial matrix			Row-std binary spatial matrix		
		IV (2)	GS2SLS (3)	MLE (4)	IV (5)	GS2SLS (6)	MLE (7)
<i>Dynamic controls</i>							
$\Delta GGI_{i,t-1}$	-0.205 (0.043)***	-0.178 (0.035)***	-0.210 (0.042)***	-0.212 (0.042)***	-0.291 (0.055)***	-0.209 (0.042)***	-0.211 (0.042)***
$GI_{i,t-1}$	-0.304 (0.028)***	-0.271 (0.047)***	-0.284 (0.030)***	-0.279 (0.029)***	-0.168 (0.039)***	-0.287 (0.030)***	-0.282 (0.029)***
<i>Spatial dependence</i>							
$\hat{\rho}$		1.121 (0.341)***	0.167 (0.091)*	0.209 (0.071)***	1.464 (0.517)***	0.141 (0.092)	0.188 (0.067)***
No. of obs.	390	360	390	390	360	390	390
R ²	0.300	0.165			0.016		
RMSE	0.695	0.683	0.691	0.691	0.742	0.692	0.692
<i>Identification test</i>							
F-test of weak identification		44.14 (0.000)			13.06 (0.000)		
Sargan test for overidentification		0.167 (0.683)			0.007 (0.932)		

Note: a. We used row-standard binary and distance-inverse spatial matrices in Columns (2)-(4) and (5)-(7), respectively.

b. Instruments for Columns (2) and (5) are the 1- and 2-period lags of the spatial lag term.

c. ***, ** and * denote 1%, 5% and 10% significance levels in turn.

Table 4 Baseline estimation results (dynamic panel)

Independent Variable	SAR-FE: Row-std binary spatial matrix					SAR-FE: Row-std distance-inverse spatial matrix			
	FE OLS (1)	IV (2)	GS2SLS (3)	SYS-GMM (4)	MLE (5)	IV (6)	GS2SLS (7)	SYS-GMM (8)	MLE (9)
<i>Dynamic controls</i>									
$\Delta GGI_{i,t-1}$	-0.083 (0.036)**	-0.082 (0.046)*	-0.102 (0.039)***	-0.212 (0.089)**	-0.075 (0.037)**	-0.098 (0.054)*	-0.119 (0.042)***	-0.148 (0.148)	-0.074 (0.037)**
$GI_{i,t-1}$	-0.713 (0.036)***	-0.795 (0.066)***	-0.686 (0.042)***	-0.267 (0.077)***	-0.805 (0.054)***	-0.771 (0.078)***	-0.681 (0.042)***	-0.209 (0.096)**	-0.807 (0.053)***
<i>Spatial dependence</i>									
$\hat{\rho}$		0.174 (0.329)	0.364 (0.403)	0.587 (0.172)**	0.091 (0.107)	0.385 (0.481)	0.910 (0.397)**	0.546 (0.164)***	0.070 (0.090)
Prov. fixed effects	Yes	Yes	Yes	Yes	Yes	Yes	Yes	Yes	Yes
No. of obs.	390	360	390	360	360	360	390	360	360
R ²	0.573	0.459	0.223	–	0.446	0.447	0.216	–	0.448
RMSE	0.536	0.573	0.595	0.666	0.553	0.579	0.736	0.671	0.552
<i>Identification test</i>									
F-test of weak identification		31.37 (0.000)	52.13 (0.000)	–	–	9.04 (0.000)	50.22 (0.000)		
Sargan test for overidentification		2.471 (0.116)	–	32.83 (0.987)	–	1.374 (0.241)	–	13.25 (0.995)	
<i>Diagnostic tests</i>									
Arellano-Bond test for AR(1)				-3.03 (0.000)	–				

Note: a. We used row-standard binary and distance-inverse spatial matrices in Columns (1)-(5) and (6)-(9), respectively.

b. Instruments for Columns (2) and (6) are the 1- and 2-period lags of the spatial lag term. Instruments for Columns (3) and (7) are the first two orders of spatial lag terms. Instruments for Columns (4) and (8) are the 2- and 3-period lags of the spatial lag term.

c. 62 instruments were used in Columns (4) and (8) to derive Sargan $\chi^2(58)$ statistics.

d. ***, ** and * denote 1%, 5% and 10% significance levels in turn.

Table 5 The determinants of green growth

Independent Variable	SAR-FE: Row-std binary spatial matrix				SAR-FE: Row-std distance-inverse spatial matrix			
	GS2SLS (1)	GS2SLS (2)	GS2SLS (3)	MLE (4)	GS2SLS (5)	GS2SLS (6)	GS2SLS (7)	MLE (8)
<i>Dynamic controls</i>								
$\Delta GGI_{i,t-1}$	-0.001 (0.043)	-0.044 (0.043)	-0.009 (0.044)	0.020 (0.037)	-0.030 (0.044)	-0.080 (0.045)*	-0.041 (0.046)	0.020 (0.037)
$GI_{i,t-1}$	-0.900 (0.055)***	-0.807 (0.052)***	-0.895 (0.058)***	-0.937 (0.047)***	-0.844 (0.051)***	-0.757 (0.050)***	-0.837 (0.057)***	-0.937 (0.047)***
<i>Spatial dependence</i>								
$\hat{\rho}$	1.306 (0.460)***	1.188 (0.463)**	0.932 (0.442)**	0.015 (0.069)	0.952 (0.392)**	1.095 (0.408)**	0.887 (0.406)**	0.014 (0.063)
<i>Innovation</i>								
Ln(total R&D)	0.218 (0.050)***		0.204 (0.076)***	0.052 (0.095)	0.201 (0.051)***		0.239 (0.079)***	0.053 (0.094)
Ln(high-tech firm R&D)		0.041 (0.033)				0.035 (0.033)		
<i>Green structural reforms</i>								
Ln(transaction values in technological markets)	0.073 (0.051)				0.069 (0.053)			
Ln(output value of high-tech industry)		0.065 (0.029)**	0.023 (0.027)	0.006 (0.026)		0.058 (0.029)**	0.022 (0.028)	0.006 (0.026)
<i>Green trade openness</i>								
Scale of green openness	-0.778 (2.961)		-0.450 (2.895)	-0.935 (2.433)	-1.549 (3.026)		-1.426 (3.026)	-0.933 (2.433)
Intensity of green openness		-0.075 (2.479)				-0.530 (2.546)		
<i>Exogenous shocks</i>								
Weather shock			1.267 (0.756)*	1.457 (0.674)**			1.259 (0.833)	1.458 (0.672)**
Political shock			-0.191 (0.075)**	-0.196 (0.066)***			-0.197 (0.075)***	-0.196 (0.066)***
Ln(time)			-0.015	0.294			-0.127	0.293

			(0.128)	(0.154) [*]			(0.137)	(0.152) [*]
Province fixed effects	Yes	Yes	Yes	Yes	Yes	Yes	Yes	Yes
No. of obs.	390	390	390	360	390	390	390	360
R ²	0.215	0.216	0.210	0.230	0.224	0.217	0.213	0.230
AIC	0.671	0.626	0.471	2.689	0.492	0.589	0.473	2.689
RMSE	0.844	0.816	0.705	0.518	0.723	0.791	0.707	0.518
<i>Identification Test</i>								
Weak Identification F-test	8.063	6.595	4.439	–	5.885	7.209	4.765	–
	(0.005)	(0.011)	(0.036)		(0.016)	(0.008)	(0.030)	

Note: a. The first and second order spatial lags are used as instruments in GS2SLS estimation, in order to reduce over- and weak identification bias.

b. ^{***}, ^{**} and ^{*} denote 1%, 5% and 10% significance levels in turn.

Table 6 Decomposition of marginal effects

Independent Variable	GS2SLS ^a			MLE ^b		
	ATME (1)	ADME (2)	AIME (3)	ATME (4)	ADME (5)	AIME (6)
<i>Short-term</i>						
$\Delta GGI_{i,t-1}$	-0.361	-0.052	-0.309	0.023	0.023	0.0001
$GI_{i,t-1}$	-7.411	-1.069	-6.342	-0.946	-0.938	-0.007
Ln(total R&D)	2.118	0.306	1.812	0.058	0.058	0.00005
Ln(output value of high-tech industry)	0.193	0.028	0.165	0.005	0.005	0.0001
Scale of green openness	-12.627	-1.822	-10.805	-0.458	-0.442	-0.016
Weather shock	11.148	1.608	9.54	1.586	1.584	0.002
Political shock	-1.748	-0.252	-1.496	-0.197	-0.196	-0.001
Ln(time)	-1.122	-0.162	-0.96	0.283	0.278	0.005
<i>Long-term</i>						
$GI_{i,t-1}$	-5.445	-0.969	-4.476	-0.971	-0.957	-0.014
Ln(total R&D)	1.556	0.277	1.279	0.054	0.054	0.0008
Ln(output value of high-tech industry)	0.142	0.025	0.117	0.006	0.006	0.0001
Scale of green openness	-9.277	-1.651	-7.626	-0.966	-0.952	-0.014
Weather shock	8.191	1.458	6.733	1.509	1.488	0.021
Political shock	-1.284	-0.229	-1.055	-0.203	-0.200	-0.003
Ln(time)	-0.824	-0.147	-0.677	0.304	0.299	0.005

Note: a. Columns 1-3 are calculated based on estimates in Column 7 of Table 5.

b. Columns 4-6 are calculated based on estimates in Column 8 of Table 5.

Table 7 Regional annual green growth rates

	Nation	East	Center	West
<i>Observed</i>				
1999-2000	0.975	1.013	0.806	0.838
2001-2006	0.026	0.027	-0.004	0.039
2007-2009	0.095	0.101	0.069	0.057
2010-2011	0.066	0.062	0.085	0.095
<i>Overall</i>				
1998-2011	0.194	0.201	0.151	0.175
<i>Forecast</i>				
2012-2015	-0.061	-0.062	-0.055	-0.054
2016-2020	-0.015	-0.016	-0.012	-0.006
2021-2025	-0.010	-0.011	-0.010	-0.006
2026-2030	0.003	0.004	0.003	0.002
<i>Overall</i>				
2012-2031	-0.025	-0.026	-0.023	-0.020