



Munich Personal RePEc Archive

## **The Origins and Long-Run Consequences of the Division of Labor**

Depetris-Chauvin, Emilio and Özak, Ömer

Instituto de Economía e Instituto de Ciencia Política, Pontificia  
Universidad Católica de Chile, Santiago de Chile, Department of  
Economics, Southern Methodist University, Dallas TX

26 August 2016

Online at <https://mpra.ub.uni-muenchen.de/77311/>  
MPRA Paper No. 77311, posted 06 Mar 2017 15:24 UTC

# The Origins and Long-Run Consequences of the Division of Labor\*

Emilio Depetris-Chauvin<sup>†</sup> and Ömer Özak<sup>‡</sup>

February 14, 2017

## Abstract

This research explores the historical roots and persistent effects of the division of labor in pre-modern societies. Exploiting a novel ethnic-level dataset, which combines geocoded ethnographic, linguistic and genetic data, it advances the hypothesis and establishes empirically that population diversity had a positive effect on the division of labor, which translated into persistent differences in economic development. Specifically, it establishes that pre-modern economic specialization was conducive to pre-modern statehood, urbanization and social hierarchy. Moreover, it demonstrates that higher levels of pre-modern economic specialization are associated with greater skill-biased occupational heterogeneity, economic complexity and economic development in the contemporary era.

*Keywords:* Comparative Development, Division of Labor, Economic Specialization, Human Capital, Skill-Bias, Population Diversity, Cultural Diversity, Persistence

*JEL Classification:* D74, F10, F14, J24, N10, O10, O11, O12, O40, O43, O44, Z10, Z13

---

\*We wish to thank Javier Birchenall, Klaus Desmet, Oded Galor, Pete Klenow, Stelios Michalopoulos, Dan Millimet, Andrei Shleifer and David Weil, as well as conference participants at the “Annual Meetings of the American Economic Association”, 2017; “Annual Meeting of the Latin American and Caribbean Economic Association (LACEA)”, 2015; Zeuthen Workshop, Copenhagen, 2016; “Ethnicity and Diversity: Concepts and Measures, Causes and Consequences”, Juan March Institute, 2016; “4<sup>th</sup> Economic History and Cliometric Lab”, PUC Chile, 2016; and seminar participants at Brown University, Clark University, Southern Methodist University, University of California Santa Barbara, University of Connecticut, Banco de la República de Colombia, Universidad de los Andes, Universidad del Rosario, and Universidad Nacional de Colombia, for useful comments and discussions. Additionally, we thank Anthon Eff for sharing the EA and SCCS datasets, and James Fenske for sharing his mapping of ethnic groups to their historical homelands.

<sup>†</sup>Instituto de Economía e Instituto de Ciencia Política, Pontificia Universidad Católica de Chile, Santiago de Chile. E-mail: edepetris@uc.cl

<sup>‡</sup>Department of Economics, Southern Methodist University, Dallas TX. E-mail: ozak@smu.edu

# 1 Introduction

At least since Adam Smith, the presence of individuals exclusively engaged in specific occupations has been considered fundamental to comparative economic development.<sup>1</sup> The importance of this division of labor is attributed to its essential role in the accumulation of production specific human capital and the potential benefits of learning by doing, all of which may be conducive to increasing productivity, innovation, trade, and economic development.<sup>2</sup> Moreover, these consequences of the division of labor may in turn have provided the fertile ground for the emergence and subsequent evolution of complex social organizations.<sup>3</sup> Despite the prevalence of the division of labor since pre-modern times and its suggested fundamental role for the progression of societies, little, if anything, is known about its deep-rooted determinants and its long-run consequences for comparative development.

This research explores the deep historical roots and persistent effects of the division of labor in pre-modern societies. It advances the hypothesis, and establishes empirically that population diversity had a positive causal effect on the division of labor, which translated into persistent differences in economic development. Specifically, it establishes that pre-modern economic specialization was conducive to pre-modern statehood, urbanization and social hierarchy. Furthermore, it demonstrates that higher levels of pre-modern economic specialization are associated with greater skill-biased occupational heterogeneity, economic complexity and economic development in the contemporary era.

Underlying the hypothesized positive effect of population diversity on the division of labor is the idea that more diverse populations experienced larger variations in preferences and skills across individuals, which increased the complementarities between individuals and between individuals and their environment. In turn, these larger complementarities fostered the emergence of the division of labor within a society due to the potential gains of increased occupational specialization.<sup>4</sup> Thus, the theory predicts that during the pre-modern era economic specialization should emerge and be more prevalent among diverse populations. Moreover, this effect should be strengthened for diverse populations inhabiting diverse environments. Consequently, and as a result of the aforementioned gains, pre-modern societies with higher levels of occupational specialization should also have benefited from higher levels of prosperity in pre-modern times. Specifically, higher levels of specialization should be conducive to the emergence of centralized institutions, higher levels of technology and more complex societies. Furthermore, given the persistence of culture, institutions, human capital and technology, and their effect on development (Diamond, 1997; Glaeser et al., 2004; Acemoglu et al., 2005; Alesina et al., 2013; Michalopoulos and Papaioannou, 2013; Galor and Özak, 2016; Depetris-Chauvin, 2014),

---

<sup>1</sup>The idea presented by Smith (1776) has been shared by many philosophers and political economists across the ages, including Plato, Xenophon, Aristotle, Kuan Chung, Mencius, Hsün Tzu, al-Ghazali, Ibn Khaldün, Thomas Aquinas, David Hume, Karl Marx, Emilé Durkheim, among others (Sun, 2012).

<sup>2</sup>There exists a large theoretical literature on the relation between division of labor and economic outcomes (Stigler, 1951; Houthakker, 1956; Romer, 1987; Kiyotaki and Wright, 1989; Yang and Borland, 1991; Borland and Yang, 1992; Yang and Sachs, 2008).

<sup>3</sup>This relation has also been previously hypothesized in other social sciences outside economics (Claessen and Skalník, 1978; Brumfiel and Earle, 1987; Childe and Wailes, 1996; Polanyi, 2001).

<sup>4</sup>I.e., the emergence within a society of individuals exclusively engaged in specific occupations, e.g., a baker, a butcher, or a metalworker. Importantly, the lack of economic specialization does not imply the lack of knowledge about an activity. E.g., members of the *Aché* tribe of Paraguay, while having the knowledge to produce arrows, bows, huts, among other goods, were not specialized.

the theory suggests a potential persistent positive effect of pre-modern economic specialization of labor on contemporary economic outcomes.

To empirically test these hypotheses, this research combines geocoded ethnographic, linguistic and genetic data to construct a novel dataset of measures of population diversity, economic specialization and development for pre-modern societies.<sup>5</sup> In particular, for over 1100 ethnicities, the research constructs novel measures of economic specialization, based on the number of economic activities in which specialization existed in the pre-modern era. By performing the analysis at the *ethnic level*, the research sidesteps potential pitfalls from the aggregation of data (e.g., to the country level). A major challenge for the analysis is the measurement of population diversity within a society in the past, given the lack of direct measures of skills, preferences or other (intergenerationally transmitted) traits for individuals within an ethnicity that could be used to generate a measure of historical population diversity. The research overcomes this major challenge by constructing various proxies of historical population diversity based on genetic and linguistic data at the ethnic level. Thus, the analysis focuses on the effects of *intra-ethnic* population diversity, overcoming the potential confounding effects of *country-level inter-ethnic* diversity, which has been widely exploited in the literature.

The research explores the deep historical roots of the division of labor, by establishing the robust positive causal effect of population diversity on the prevalence of economic specialization in pre-modern societies in various steps. First, using ordinary least squares and a restricted sample of ethnicities for which ethnic, genetic and linguistic data exist, the empirical analysis documents the robust positive statistically and economically significant relation between diversity and economic specialization. Clearly, these statistical associations do not necessarily imply causality and could arise from omitted confounders, such as heterogeneity in environmental factors, or as a result of reverse causality from, for instance, the emergence of institutions on the composition of populations.

In order to overcome these potential concerns, the research follows various strategies. First, it accounts for the confounding effect of a large set of geographical and climatic controls, such as absolute latitude, area of the ethnic homeland, average elevation, terrain ruggedness, accessibility to navigable water, average temperature and precipitation. Second, it establishes that the main results are not driven by other plausible sources for the emergence of economic specialization such as variation in agricultural suitability, ecological diversity, spatial and intertemporal temperature volatility, pre-1500CE caloric suitability and mobility costs.<sup>6</sup> Third, it follows an instrumental variable approach by exploiting the exogenous variation in population diversity caused by a fundamental statistical process generated by historical migratory patterns.<sup>7</sup> By exploiting these three strategies jointly, the research establishes the positive causal effect of population diversity on the prevalence of economic specialization for the restricted sample of ethnic groups.

---

<sup>5</sup>The analysis follows the approach in the literature and identifies pre-modern societies by their ethnicity, and uses these two terms interchangeably (Gennaioli and Rainer, 2007; Michalopoulos, 2012; Alesina et al., 2013).

<sup>6</sup>While this paper focuses on the causal effect of population diversity and its interaction with environmental diversity, the analysis also sheds light on the role of geographical factors on the emergence of the division of labor, as well as their relative importance compared to population diversity. In particular, it establishes the effect of geographical determinants of market size on the emergence of the division of labor.

<sup>7</sup>This statistical process is known as a serial founder effect (SFE), which as established in section 4.2, generated exogenous variation in the proxies of population diversity employed in this research. A similar strategy was employed by Ashraf and Galor (2013b).

In a second stage of the analysis, the research exploits a two-step econometric method to generate predicted population diversity measures (Murphy and Topel, 2002; Ashraf and Galor, 2013b), which allows the analysis to be performed on a sample of more than 900 ethnicities. By increasing the sample size, the analysis overcomes potential concerns regarding geographical coverage and representativeness of the restricted sample. Moreover, by increasing the sample size the effect of population diversity can be estimated more precisely. Reassuringly, and in line with the proposed hypothesis, the estimated causal effect of population diversity on the prevalence of economic specialization is positive, statistically and economically significant. Moreover, the research establishes the positive complementary effect of diversity in population and environment on the prevalence of economic specialization. These results are robust to accounting for other historical confounding processes such as the demic diffusion of the Neolithic Revolution and the number of years of continuous human presence. Furthermore, the analysis establishes that the positive effect of diversity on specialization is robust to the distance to technological frontiers in different periods in the past and to the presence of centralized institutions. In particular, it establishes that the effect of population diversity on pre-modern specialization is qualitatively similar for ethnicities with and without a state.

In a third stage, the research analyzes the effect of pre-modern economic specialization on economic development. First, it explores the effect of economic specialization on pre-industrial economic development. It establishes that pre-modern economic specialization has a positive association with pre-industrial levels of technological specialization, socio-economic complexity, population density, size of local communities, statehood, and class stratification. Furthermore, it provides suggestive evidence that economic specialization is a crucial mechanism linking population diversity and economic development in the pre-industrial era. In order to overcome potential endogeneity concerns due to reverse causality, the analysis exploits a second instrumental variable strategy based on “atheoretical” instrumental variables suggested by Lewbel (2012). This strategy exploits the moment conditions in the cross section of ethnicities to identify the structural parameters in the absence of traditional identifying information.<sup>8</sup> The results suggest a positive statistically and economically significant effect of pre-modern economic specialization on pre-industrial economic development.

Finally, the research explores the persistent effect of pre-modern economic specialization on contemporary economic development. In particular, it provides suggestive evidence that ethnicities exposed to higher levels of pre-modern economic specialization have higher levels of contemporary development as captured by the light density in their ethnic homelands. Moreover, the analysis establishes a strong positive robust correlation between pre-modern economic specialization and contemporary occupational heterogeneity at the ethnicity level. Interestingly, although this association holds for low- and high-skilled occupations, the analysis suggests a stronger effect on the heterogeneity of high-skilled occupations and thus a potentially skill-biased effect that may reflect the accumulation of a more diverse set of production-specific human capital. Finally, the research shows that countries with higher levels of pre-modern economic specialization tend to have more complex and diversified economic structures. Thus, the analysis provides support for a novel channel through which deep historical factors affect

---

<sup>8</sup>This instrumental variable strategy follows in the spirit of Arellano and Bond (1991) and Blundell and Bond (1998), who also generate “atheoretical” instruments using moment conditions in a dynamic panel data setting.

contemporary economic development (Spolaore and Wacziarg, 2013).

This research is the first attempt to identify the deep-rooted historical factors behind the prevalence of economic specialization in pre-modern times, as well as its effect on comparative economic development. Moreover, it is the first to identify the positive causal effect of (i) population diversity and (ii) the complementarity between the heterogeneity of both population and environment on economic specialization. Additionally, it is the first to provide evidence on the effect of pre-modern economic specialization on economic development. In doing so, this research contributes to various strands of literature.

First, this research contributes to the literature on the deep-rooted historical sources of economic development (Diamond, 1997; Gennaioli and Rainer, 2007; Nunn, 2008; Alesina et al., 2013; Ashraf and Galor, 2013b; Michalopoulos and Papaioannou, 2013; Spolaore and Wacziarg, 2013; Galor and Özak, 2016). In particular, it provides a novel channel through which historical conditions determined in the distant past still have an effect today. Moreover, this research takes a step back and analyzes the underlying causes of economic specialization in pre-modern times. Therefore, the research contributes to the literature studying societal attributes in the past (Ahlerup and Olsson, 2012; Michalopoulos, 2012; Fenske, 2014; Giuliano and Nunn, 2013). Thus, it sheds light on the origins of a fundamental driver of economic development in the pre-industrial and contemporary eras (Smith, 1776). Additionally, by unveiling the complementarities between population and the environment the analysis bridges the gap between the literature that focuses on their independent roles in shaping long-run development (Nunn and Puga, 2012; Alesina et al., 2013; Ashraf and Galor, 2013b; Michalopoulos, 2012; Galor and Özak, 2016; Giuliano and Nunn, 2016).

Second, this research contributes to the literature on the effects of diversity on economic development, which has previously been explored using various measures of genetic, ethnic, cultural, and religious diversity (Easterly and Levine, 1997; Alesina et al., 2003; Desmet et al., 2012, 2015; Ashraf and Galor, 2013b,a; Arbatli et al., 2013; Cook, 2015; Alesina et al., 2016). Although economic theory suggests that higher diversity should be beneficial for productivity and, thus, development, due to larger complementarities between agents, the empirical evidence on the benefits of diversity is sparse.<sup>9</sup> In fact, most of the existing empirical evidence, which is based on country-level measures of diversity, suggests that diversity adversely affects contemporary social cohesiveness, trust and development. In contrast to this literature, this paper establishes a positive effect of diversity on a key driver of economic development. In particular, it explores the effects of intra-ethnic population diversity during the pre-modern era on pre-modern economic specialization.

The remainder of the paper is organized as follows. Section 2 presents ethnographic evidence on the importance of the division of labor and the role of diversity in its origin. Section 3 describes the data. Section 4 analyzes the impact of population diversity on economic specialization and trade. Section 5 explores the effect of economic specialization on pre-industrial and contemporary development. Section 6 concludes.

---

<sup>9</sup>Notable exceptions include Ashraf and Galor (2013b) and Alesina et al. (2016).

## 2 Ethnographic Narratives on the Origins and Consequences of the Division of Labor

This section presents ethnographic and historical evidence in support of the view that the division of labor (i) was prevalent in many pre-industrial societies, (ii) was associated with pre-industrial development, (iii) emerged even in societies without centralized institutions, and (iv) was higher in diverse societies.

Nolan and Lenski (2011) argue that a complex division of labor was prevalent since pre-modern times. While some types of division of labor, at least along sexual lines within a family, is present in almost every society since primeval times, a high degree of specialization of labor, tasks, and other functions within different specific groups of people has been identified as a proxy of societal advancement and prosperity (Durkheim, 1893). E.g., Trigger (1983) argues that the archeological evidence from the Gerzean period in Egypt (ca. 3500BCE) supports the view that the appearance of occupational specialization, such as the existence of craft specialists producing ornaments of gold, silver, cast copper, and lapis lazuli, was accompanied by the rise of complex social and economic institutions.

The Aztecs provide another illustrative example of high degree of division of labor in pre-modern times. As documented by the *Matrícula of Huexotzinco*, a great deal of specialization existed in this Mesoamerican society around mid-1500CE (Prem and Carrasco Pizana, 1974). Certainly, almost 1600 specialists are classified in different professions such as wood workers, stone cutters, basket makers, hunters, fishermen, and even doctors. Historical records and archaeological findings provide evidence of well-developed market places before the arrival of the Spaniards. When describing the Aztec's Tlatelolco Market, Díaz del Castillo (1796) wrote “All the things which are sold there... are so numerous and of such a different quality and the great market place [...] was so crowded with people that one would not have been able to see and enquire about it all in two days”. Similar developments are found in other ancient civilizations like the Hittites, Minoans, Athenians, Egyptians and Sumerians. Moreover, evidence suggests that in these civilizations the emergence and increase in the division of labor was accompanied by the emergence of record-keeping, credit, money, writing and socio-economic complexity (Basu and Waymire, 2006; Nissen et al., 1993; Schmandt-Besserat and Schmandt-Besserat, 1996; Roberts, 2011; Loomis, 1998; Berosus and Burstein, 1978)

The previous examples, characterized by highly centralized societies engaged in economic exchange, is consistent with the idea put forward in this paper that the emergence of division of labor facilitated the emergence of complex institutions. Moreover, as proposed by this paper, evidence suggests that local markets preceded the emergence of both long-distance trade and states (Claessen and Skalník, 1978). E.g., Bisson (1982) presents archeological evidence, which suggests that commerce in indigenous products was taking place long before the introduction of foreign products into the trading systems of the Kingdom of Zimbabwe. Additionally, Reid (2002) argues that specialization and local exchanges were well developed by the Ganda people before they started to trade with coastal Arabs in the early 19th century taking advantage of an older local market system, which included a variety of currencies and markets for several commodities such as salt, iron, and bananas.

Although the discussion provided above illustrates the strong link between division of labor and

statehood, the direction of causality is hard to identify. Nonetheless, examples of highly centralized societies without division of labor are virtually absent in the anthropological, archeological and historical literature on pre-modern societies. On the contrary, several examples of stateless pre-modern societies having a noticeable division of labor suggest that statehood was not a necessary precondition for economic specialization. In particular, examine the case of the Konso of Ethiopia, who have a high degree of specialization without any level of jurisdictional hierarchy above the local level. Similarly, consider the cases of the Karen in Myanmar and the Guajiros at the Colombia-Venezuela border. The Karen people are a culturally and linguistically diverse and historically stateless society that have traditionally traded cotton, forest products, and domestic animals to neighboring Burmese and Hmong people -another stateless society- in exchange for rice, pottery, and salt (Hinton, 1979). The Guajiros, mostly a pastoralist society nowadays, were an egalitarian society that historically based their economy on hunting, gathering, horticulture, and fishing activities depending on the location (Perrin, 1996). According to early European explorers, around the 15th century there were several indigenous groups living in the homeland of the Guajiros, but all those groups were probably part of the same society receiving different names depending of the different economic activities they practiced (Perrin, 1996). Economic exchange was historically important among the Guajiros who commonly held weekly markets (Perrin, 1996).

An illustrative example of the link between diversity and division of labor is given by two stateless societies: the Konso people of South-Western Ethiopia and the Aché people of Eastern Paraguay. These two ethnic groups are located on both extremes of the sample distribution of population diversity, separated by more than five standard deviations from each other. Due to their proximity to the Ethiopian rift valley, Konso's population diversity is among the highest in the world; while the Aché is the less diverse group in the sample of societies analyzed in this research. For thousands of years, both groups inhabited remote locations with little influence from outsiders (Hallpike, 2008; Hill and Hurtado, 1996). The ecological environment for both societies was hard and not particularly rich. More specifically, the Konso historically lived in a rocky high elevation (Freeman and Pankhurst, 2003), whereas the Aché inhabited a flat tropical forest (Hill and Hurtado, 1996). The difference in diversity between these two groups maps into differences in their economic specialization of labor. In particular, according to the Ethnographic Atlas, the Konso had labor specialization in 5 activities, whereas the Aché had none. Moreover, when it comes to economic exchange, the two groups were very dissimilar as well. Markets were ancient in Konso society and held daily at different locations (Hallpike, 1968), with artisans selling wares, farmers selling grains, butter, and honey, as well as butchers selling raw meat. Contrarily, there was no exchange either between the Aché and outsiders nor within the Aché people in pre-modern times (Hill and Hurtado, 1996).

### 3 Data

This section introduces measures of pre-modern economic specialization, pre-industrial economic development, historical population diversity, and geographical controls at the ethnic level required by the empirical strategy. In particular, it explains the sources and construction of the various measures used



in the analysis.

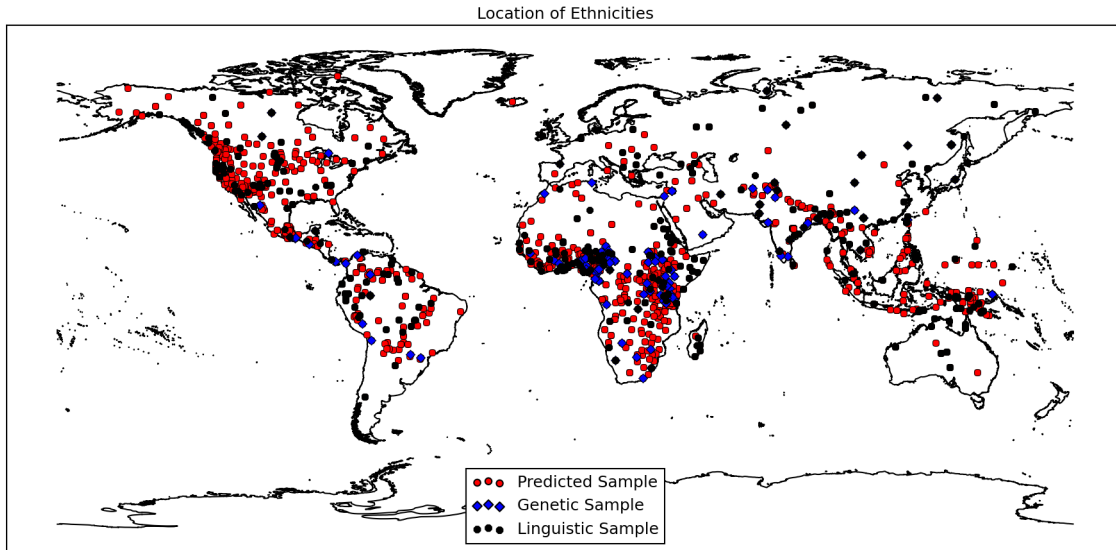


Figure 1: Location of Ethnicities employed in the Analysis (Full and Restricted Samples)

### 3.1 Dependent Variables: Pre-Modern Economic Specialization and Development

The analysis employs the two main sources for ethnic level data currently available, namely the Ethnographic Atlas (EA) and the Standard Cross-Cultural Sample (SCCS). Both datasets have been widely used in anthropology and economics for the study of pre-industrial societies and the long-term effects of pre-industrial culture and institutions (Michalopoulos and Papaioannou, 2013; Alesina et al., 2013; Fenske, 2014; Gennaioli and Rainer, 2007). The Ethnographic Atlas (Murdock, 1967) includes information on 115 characteristics for 1267 ethnicities around the globe. On the other hand, the Standard Cross-Cultural Sample (Murdock and White, 1969) expands the set of characteristics to over 2000 for a subsample of 180 independent ethnicities. By combining both datasets the analysis overcomes the restriction in terms of thematic coverage of the EA and ethnic/geographic coverage of the SCCS.<sup>10</sup> Figure 1 depicts the location of the full sample of ethnicities used in the main analysis. Additionally, it highlights the ethnicities for which population diversity data (genetic in blue, linguistic in black) is available and those for which it is predicted (red) as explained below.

In order to explore the hypothesis proposed in this paper, the analysis constructs various novel measures of economic specialization of labor at the ethnic level using data from both the EA and SCCS. In particular, both data sets include variables on the existence of “age or occupational specialization” for metal working (v55), weaving (v56), leather working (v57), pottery making (v58), boat building (v59), house construction (v60), gathering (v61), hunting (v62), fishing (v63), animal husbandry (v64), and agriculture (v65). For each of these activities, the EA and SCCS assess if the ethnic group had “craft, industrial or age specialization” or if the “activity was absent or no specialization occurred”. These

<sup>10</sup>The main reason behind the construction of the SCCS was to overcome Galton’s independence problem, i.e., the difficulties of drawing inferences from cross-cultural data due to spatial auto-correlation and historical dependence. The sample of ethnicities in the SCCS were chosen so as to minimize this problem (Murdock and White, 1969).

variables allow the identification of ethnicities in which specialization existed in the pre-modern era. On the other hand, these variables do not allow for the differentiation of ethnicities where no specialization occurred from those in which the activity was absent, thus confounding the lack of specialization with the lack of the activity. In order to overcome this problem, the analysis uses additional information from variables v44-v54 in order to assess, for the same activities, whether the activity was “absent or unimportant” or “present”.

Based on this information, the analysis constructs three measures of specialization. The first measure of the level of specialization in ethnicity  $e$ ,  $s_e^1$ , counts the number of specialized activities, i.e.  $s_e^1 = \sum_a s_{ea}$ , where  $s_{ea}$  equals 1 if the activity was present *and* specialized in ethnicity  $e$  and zero otherwise. The second measure of the level of specialization in ethnicity  $e$ ,  $s_e^2$ , is the share of activities present that were specialized, i.e.  $s_e^2 = s_e^1/n_e$ , where  $s_e^1$  is the first measure and  $n_e$  is the number of activities available in ethnicity  $e$ . Finally, the third measure of the level of specialization in ethnicity  $e$ ,  $s_e^3$ , is a score given by  $s_e^3 = \sum_a \tilde{s}_{ea}$ , where  $\tilde{s}_{ea}$  equals 0 if the activity  $a$  is not present, 1 if it is present but it is not specialized, and 3 if the activity is present and specialized in ethnicity  $e$ .<sup>11</sup> Importantly, as shown below, the main results in the paper do not depend on the measure of specialization employed in the analysis. However, given the ease of interpretation and space limitations, the analysis focuses mainly on the number of specialized activities in an ethnicity,  $s_e^1$ . Figure 2 depicts the spatial distribution and frequencies of the three measures. Importantly, the new measures of economic specialization correlate strongly among themselves.<sup>12</sup>

In order to analyze the effects of economic specialization on pre-industrial development, the analysis further employs various measures from the SCCS and EA. Specifically, it uses measures of technological specialization, complexity, population density, mean size of local communities, the level of statehood and class stratification.

### 3.2 Independent variables: Population Diversity

This research constructs a novel dataset on georeferenced population diversity at the ethnicity level using two types of proxies, namely genetic and linguistic diversity measures. It is important to note that both measures capture intra-ethnic population diversity as opposed to inter-ethnic diversity, which has been widely used in the existing literature that analyzes cross-country differences in population diversity. An essential feature of these diversity measures is that most of their variation was caused exogenously by a serial founder effect (SFE), which is a fundamental statistical process generated by historical migratory patterns (as shown in section 4.2).

A serial founder effect (SFE) implies that successive divisions of an original population into various

---

<sup>11</sup>The analysis assigns a higher value to specialization in order to differentiate the effect of specialization from technological development. Reassuringly, using a value of 2 for specialization does not alter the main results.

<sup>12</sup>Moreover, given the theoretical association between division of labor and trade within and among economies, these novel measures are associated with trade related measures available in the SCCS. In particular, the new measures are positively associated with the importance of trade, inter-community trade as food source, the existence and type of money (media of exchange) and credit, the type of credit source, and the existence of writing and records (Tables B.1-B.4), suggesting that the new measures indeed capture the phenomenon under study. A major concern with the SCCS data is that it is only available for a small subset of ethnicities, especially once the availability of population diversity measures is taken into account.

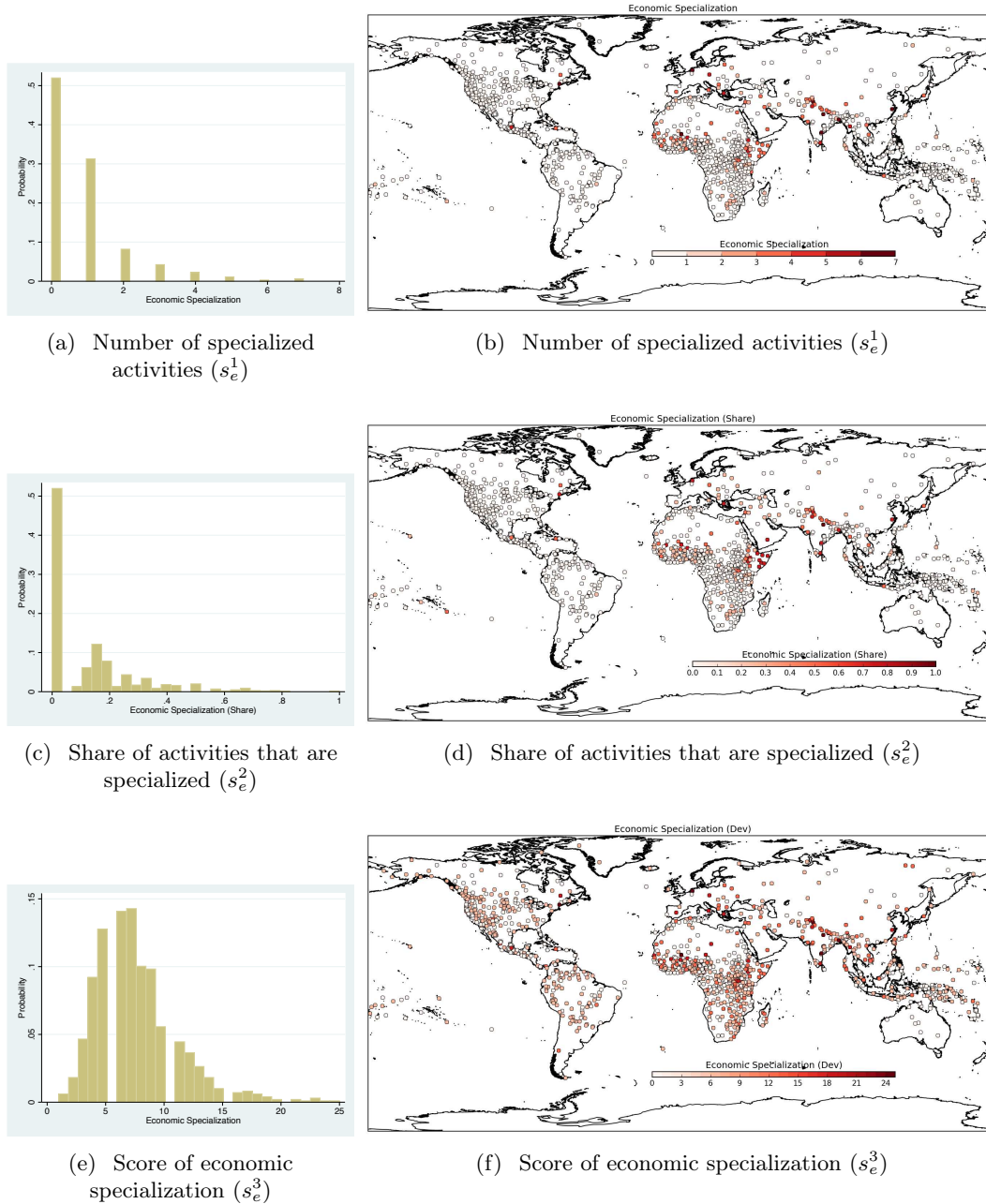


Figure 2: Distribution of Economic Specialization Measures

subpopulations generates a loss of diversity in intergenerationally transmitted characteristics such as genes, phonemes, cultural traits, preferences, knowledge, skills, etc. Of particular interest is the SFE generated by the dispersion of anatomically modern humans out of East Africa more than 60,000 years ago (Ramachandran et al., 2005). In particular, according to the Out-of-Africa hypothesis, which posits the African origin of modern humans, the SFE implies that diversity decreases along migratory routes from East Africa. Importantly, it has been established that genetic and linguistic diversity decrease with the migratory distance from East Africa (Ramachandran et al., 2005; Atkinson, 2011; Manica et al., 2007). Moreover, as could be expected in an era when knowledge and culture, among others,

were passed orally between generations, the decrease in diversity along historical migratory routes has also been documented for non-genetic traits such as arrow heads, handaxes, cultural memes, and phenotypes (Lycett and von Cramon-Taubadel, 2008; Lycett, 2008; Hamilton and Buchanan, 2009; Atkinson, 2011; Betti et al., 2009; Rogers et al., 2009).<sup>13</sup> This suggests the measures of genetic and linguistic diversity capture general aspects of historical population diversity above and beyond genes and phonemes, making them appropriate proxies for historical population diversity.

The analysis constructs a novel dataset on georeferenced genetic diversity at the ethnicity level using the most comprehensive genomic data set on human micro-satellite variation to date (Pemberton et al., 2013). In particular, Pemberton et al. (2013) combine eight previous population-genetic data sets and analyze them following a standardized procedure, which ensures all the data is produced following a uniform method, ensuring comparability across populations and samples. This dataset contains information on 645 common single-nucleotide protein (SNP) loci for 5435 individuals from 267 independent ethnicities. There are two main advantages of using this data. First, it is based on predominantly indigenous populations (Pemberton et al., 2013), which ensures the population inhabited the same location for a prolonged period of time and lowers a potential concern generated by a possible admixture of populations. Second, the SNP’s included in the analysis are “neutral” to selection, i.e. they are not involved in processes that encode proteins and thus are not subject to natural selection (Kimura, 1983).

Based on this data, this research constructs for each ethnicity a measure of genetic diversity based on what population geneticists call the expected heterozygosity within a population. In particular, the genetic diversity or expected heterozygosity of a population measures the average probability that two randomly chosen individuals in the population do not share the same allele of a gene, i.e. that they do not have the same variant form of the gene.<sup>14</sup> In order to ensure comparability across populations, the analysis constrains the construction of the genetic diversity to the set of 619 common SNP loci for which information exists for all ethnic groups.<sup>15</sup>

Out of the 267 ethnicities for which genetic data is available, this research is able to match a subset of 149 ethnicities to the Ethnographic Atlas (EA). This maps the genetic diversity data to the EA, and thus, to all the cultural, institutional and geographic data contained in the EA or to other datasets to which the EA can be mapped. In particular, and as discussed below, ethnicities can be mapped to the geographical characteristics of their historical homelands.

---

<sup>13</sup>These effects have been found in both human and non-human species (Baker and Jenkins, 1987). Moreover, the decrease in diversity due to migration and serial founder effects has been found in later migratory processes within continents (Pinhasi et al., 2012; Lao et al., 2008; Myres et al., 2011; Friedlaender et al., 2008; Wang et al., 2007).

<sup>14</sup>The literature on diversity has measured this population attribute using various characteristics like religion, language, ethnicity, or genetics. Diversity within a population is usually defined as the probability that two random individuals in a population do not share the same characteristic. For example, religious, linguistic or ethnic diversity/fractionalization estimate the probability that two random individuals in a population do not share the same religion, speak the same language or have the same ethnic background. Similarly, genetic diversity or expected heterozygosity measure the expected genetic similarity between any two individuals in a population. It is important to note that *all* these measures capture diversity and do not measure any innate superiority of a certain type of characteristic over another. For example, a population in which there exists only one religion, language, ethnicity, or blood type, will be less diverse than one in which there are many, but the measures of diversity do not and cannot be used to identify if one *specific* religion, language, ethnicity or blood type is better than others.

<sup>15</sup>The genetic diversity on the full set of 645 loci is almost perfectly correlated with the measure used in the paper for the 267 original ethnicities in Pemberton et al. (2013). Their correlation is 0.99 ( $p < 0.01$ ).

Additionally, the research uses measures of linguistic diversity as alternative proxies of population diversity. In particular, the analysis employs measures of consonant inventories, vowel quality inventories, and the number of genders (Dryer, 2013) as measures of intra-ethnic (language) diversity. The analysis employs the mapping between WALS and EA/SCCS created by Galor et al. (2016) in order to link these alternative measures of population diversity to the ethnographic and geographic data. This results in 3 different additional samples of ethnicities with population diversity data: 299 ethnicities based on consonant inventories, 301 ethnicities based on vowel quality inventories, and 130 ethnicities based on the number of genders. Unlike genetic diversity, these proxies of population diversity were potentially more affected by evolutionary processes (Galor et al., 2016; Creanza et al., 2015), decreasing the variation that could be explained by a serial founder effect. For this reason, the analysis focuses mostly on genetic diversity, but shows that qualitatively similar results are obtained when using these alternative proxies. Moreover, given that only 48 ethnicities belong to the genetic and the large linguistic diversity samples, while only 23 belong jointly to all samples with population diversity data, the robustness of the results to the measure of population diversity employed in the analysis suggests that sampling biases are not driving the results, and provide somewhat independent evidence for the effect of population diversity on economic specialization.

In order to expand the sample, the analysis generates predicted levels of population diversity for the full sample of 1265 ethnicities available in the EA. In particular, the analysis exploits the variations in the pre-historical migratory distance to East Africa (Addis Ababa) in order to generate the predicted population diversity for the full sample of ethnicities available in the EA. More specifically, the analysis uses the empirical relation between the proxies of population diversity and the migratory distance to East Africa (in the restricted subsamples) to construct an out-of-sample predicted population diversity measure. Additionally, the analysis employs bootstrapped standard errors to address the generated regressor bias in the estimation of standard errors (Murphy and Topel, 2002; Ashraf and Galor, 2013b).

### 3.3 Geographical Controls

An ethnicity's pattern of economic activities, opportunities to trade, as well as its genetic and linguistic diversity may be confounded with the geographical characteristics of the ethnicity's homeland. Thus, the analysis accounts for a large set of geographical controls in order to attenuate any concerns about omitted variable bias. In particular, using the mapping between geographic information systems (GIS) geometries of ethnic homelands and the EA and SCCS generated by Fenske (2014), the analysis constructs for each ethnicity a large set of geographical characteristics of its homeland. Tables A.1-A.2 show the list of all variables and their summary statistics for the various samples used in the paper.

## 4 Origins of Economic Specialization

This section explores the deep historical origins of the division of labor. In particular, it exploits the exogenous variation in population diversity generated by serial founder effects (and the Out-of-Africa theory) to analyze the effect of population diversity, as measured by intra-ethnic genetic and linguistic

diversity, on economic specialization of labor.<sup>16</sup> Although the analysis focuses on the causal effect of population diversity, it also presents evidence for other potential drivers of economic specialization like environmental diversity, geographically based market potential, and the effect of other geographical endowments.

#### 4.1 Population Diversity and Economic Specialization (Ordinary Least Squares Analysis)

This subsection explores the statistical relationship between population diversity and economic specialization at the ethnicity level. It focuses on 116 ethnic groups for which both genetic and ethnographic data to construct the proposed measure of economic specialization is available. Figure 3(a) shows for these 116 ethnicities the distribution of population diversity for groups above and below the mean economic specialization. Clearly, more specialized groups also have higher population diversity.

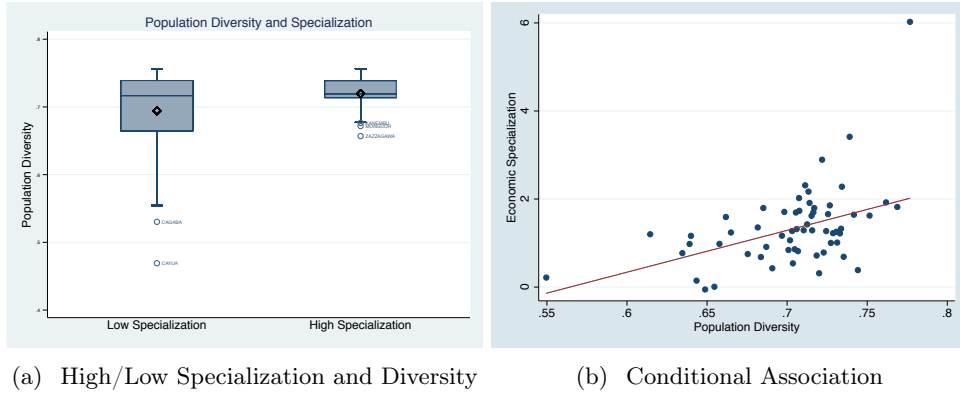


Figure 3: Population Diversity and Economic Specialization

In order to analyze this relation more systematically, the following baseline econometric specification is adopted and estimated via ordinary least squares (OLS):

$$Specialization_i = \alpha + \beta PD_i + G_i' \Gamma + X_i' \Delta + \epsilon_i \tag{1}$$

where  $Specialization_i$  and  $PD_i$ , respectively, are one of the measures of economic specialization and population diversity of ethnic group  $i$ , which were introduced in section 3. The vector  $G_i'$  denotes a set of basic geographic controls whereas the vector  $X_i'$  includes a set of additional potential confounders that are discussed below in detail. Finally,  $\epsilon_i$  is an error term that is allowed to be heteroskedastic. The proposed hypothesis in this paper implies  $\beta > 0$ .<sup>17</sup>

Table 1 analyzes the association between economic specialization and population diversity accounting for a basic set of geographic characteristics of ethnicities' homelands using OLS. In particular,

<sup>16</sup>In order to economize space and ease the presentation, the main analysis focuses on genetic diversity, although robustness to the diversity measure are included in various parts of the main text and appendices.

<sup>17</sup>In order to ease the interpretation of the results and compare them across the different specifications presented in this paper, all tables report standardized coefficients. The standard coefficients report the number of standard deviation changes in the dependent variable for a one-standard deviation change in the independent variable.

column 1 shows the unconditional relationship between population diversity and economic specialization. The estimated coefficient is statistically significant at the 1 percent level and is consistent with an economically significant effect of population diversity. In particular, a one standard deviation increase in population diversity is associated with a 0.27 standard deviation increase in economic specialization.

Table 1: Population Diversity and Economic Specialization

	Economic Specialization						
	(1)	(2)	(3)	(4)	(5)	(6)	(7)
Population Diversity	0.27*** (0.05)	0.31*** (0.05)	0.27*** (0.05)	0.27*** (0.05)	0.25*** (0.05)	0.27*** (0.05)	0.36*** (0.09)
Absolute Latitude		0.15 (0.09)					0.80*** (0.30)
Area			0.01 (0.04)				0.01 (0.05)
Elevation (Avg.)				-0.03 (0.11)			0.31* (0.16)
Precipitation (Avg.)					-0.08 (0.09)		0.13 (0.16)
Temperature (Avg.)						0.04 (0.08)	0.73*** (0.25)
Adjusted- $R^2$	0.07	0.08	0.06	0.06	0.06	0.06	0.15
Observations	116	116	116	116	116	116	116

Notes: This table establishes the positive statistically and economically significant correlation between economic specialization and population diversity as measured by expected heterozygosity after accounting for a set of basic geographical controls. Economic specialization counts the number of specialized activities present in an ethnicity. Standardized coefficients. Heteroskedasticity robust standard error estimates are reported in parentheses; \*\*\* denotes statistical significance at the 1% level, \*\* at the 5% level, and \* at the 10% level, all for two-sided hypothesis tests.

A potential concern is that population diversity might be capturing the effect of absolute latitude. In particular, technologies and institutions have historically spread more easily across similar latitudes, where climate and the duration of days were not drastically different. Furthermore, the positive high correlation between absolute latitude and development, which has been widely documented in the economic growth and development literature (Spolaore and Wacziarg, 2013), might confound the effect of population diversity. In order to address this potential concern column 2 accounts for the effect of absolute latitude. Although absolute latitude enters positively (albeit statistically insignificantly) in this specification, the effect of population diversity remains highly statistically significant and increases by 10 percent. This increase in the point estimate for  $\beta$  accurately reflects the fact that there is a strong negative relationship between absolute latitude and diversity (Michalopoulos, 2012).

Column 3 accounts for the total area of the ethnic homeland, since all else equal, larger areas may contain a more diverse population by construction. In particular, cultural assimilation may be more difficult in large territories, thus, contributing to cultural diversity. Additionally, total area may confound the effect of market potential, which is a potential driver of economic specialization.<sup>18</sup> Nonetheless, the inclusion of this control does not affect the estimated effect of population diversity.

<sup>18</sup>It is worth noting that total area is determined by ethnic homeland borders, which can be arguably endogenous to both heterogeneity and economic specialization.

Column 4 accounts for the effect of mean elevation, which has been shown to negatively correlate with ethnolinguistic heterogeneity at the country level (Michalopoulos, 2012); without affecting the results.

Another potential concern is that population diversity correlates with precipitation and temperature. In particular, it has been shown that both species and cultural diversity are positively correlated with precipitation and net primary productivity, which in turn depends on temperature (Moore et al., 2002; Nettle, 1998). Furthermore, precipitation and temperature might directly affect economic activities and specialization. Thus, omission of precipitation and temperature might bias the results. Columns 5 and 6 address this potential concern by accounting for average precipitation and average temperature, respectively. As shown in the table, the estimated coefficients on both these controls are negative and not statistically nor economically significant. On the other hand, the effect of population diversity remains positive statistically and economically significant.

Finally, column 7 accounts for the joint effect of all these basic geographic controls. The statistical relationship between population diversity and economic specialization is statistically significant at the 1 percent level and implies an economically significant effect of population diversity. In particular, an increase of one standard deviation in population diversity increases economic specialization by more than one-third of its standard deviation.

While these results support the proposed hypothesis, the estimated effect of population diversity might be biased due to the omission of other variables. In order to address this potential concern and to account for other possible sources of economic specialization, Table 2 adds a further set of controls to the analysis. In order to compare with the previous results, column 1 includes all the controls in Table 1.

A potential concern is that higher population diversity may be a result of a hostile disease environment. For example, Birchenall (2014) argues that pathogen stress influenced pre-colonial ethnic diversity. Furthermore, a “bad” disease environment can also negatively affect economic activities. Thus, column 2 considers the potential confounding effect of the disease environment by accounting for the ecology of malaria (Kiszewski et al., 2004). As expected, malaria ecology negatively correlates with economic specialization. Given the positive correlation between the disease environment and population diversity, the inclusion of malaria ecology increases the size and statistical significance of the point estimate for population diversity.

Column 3 accounts for the diversity of the ecological environment, which could potentially affect specialization directly (Fenske, 2014) and be correlated with linguistic and cultural diversity (Michalopoulos, 2012; Moore et al., 2002). Reassuringly, although ecological diversity correlates strongly with economic specialization, the point estimate for population diversity is virtually unaltered.<sup>19</sup>

Columns 4 and 5 account for the potentially confounding effects of agricultural and caloric suitability. In particular, Michalopoulos (2012) shows that variation in soil quality correlates with inter-ethnic linguistic diversity, which could foster economic exchange. Moreover, variation in soil quality could potentially be conducive to specialization directly. On the other hand, Galor and Özak (2015, 2016) show that pre-industrial population (density) levels are highly correlated with their Caloric Suitabil-

---

<sup>19</sup>Following Fenske (2014), ecological diversity is a Herfindahl index of the shares of each ethnic homeland’s area occupied by each ecological type (Olson et al., 2001).



Table 2: Population Diversity and Economic Specialization

	Economic Specialization								
	(1)	(2)	(3)	(4)	(5)	(6)	(7)	(8)	(9)
Population Diversity	0.36*** (0.09)	0.41*** (0.10)	0.36*** (0.10)	0.37*** (0.09)	0.34*** (0.11)	0.33*** (0.10)	0.31*** (0.09)	0.40*** (0.11)	0.31*** (0.10)
Malaria Ecology		-0.36*** (0.12)							-0.41*** (0.12)
Ecological Diversity			0.26*** (0.10)						0.20* (0.11)
Agricultural Suitability (avg.)				0.00 (0.13)					0.13 (0.10)
Agricultural Suitability (std.)				0.22* (0.13)					0.32** (0.14)
Caloric Suitability (Pre-1500 ,avg.)					-0.24* (0.14)				-0.34** (0.14)
Caloric Suitability (Pre-1500 ,std.)					0.30** (0.11)				0.07 (0.14)
Temperature (Spatial Corr., Avg.)						0.01 (0.09)			-0.05 (0.08)
Temperature (Volatility, Avg)						-0.58*** (0.19)			-0.11 (0.20)
Pct. Area within 100kms of Sea							0.02 (0.10)		-0.16 (0.11)
Coast Length							0.49** (0.22)		0.60*** (0.20)
Ruggedness (Avg.)								-0.22 (0.22)	0.07 (0.18)
Pre-Industrial Mobility (avg.)								0.81* (0.41)	1.06** (0.46)
Pre-Industrial Mobility (std.)								-0.04 (0.12)	-0.36** (0.16)
Main Controls	Yes	Yes	Yes	Yes	Yes	Yes	Yes	Yes	Yes
Altonji et al		-8.86	303.72	-242.74	13.92	10.19	6.36	-11.69	6.34
$\delta$		0.83	1.26	0.89	1.03	1.01	1.02	0.84	1.18
$\beta$ -Oster		0.62	0.36	0.38	0.12	0.04	0.03	0.76	0.30
$R^2$	0.20	0.27	0.26	0.23	0.24	0.24	0.26	0.23	0.50
Adjusted- $R^2$	0.15	0.22	0.21	0.17	0.18	0.18	0.20	0.17	0.40
Observations	116	116	116	116	116	116	116	116	116

Notes: This table establishes the positive statistically and economically significant correlation between economic specialization and population diversity as measured by expected heterozygosity after accounting for the set of basic geographical controls of Table 1 and an extended set of confounders. Standardized coefficients. Heteroskedasticity robust standard error estimates are reported in parentheses; \*\*\* denotes statistical significance at the 1% level, \*\* at the 5% level, and \* at the 10% level, all for two-sided hypothesis tests.

ity Index (CSI).<sup>20</sup> Since population (density) potentially affects market size and thus specialization (Smith, 1776), including the mean and the standard deviation of the CSI accounts for this potential confounding channel. Reassuringly, the qualitative results remain unaltered.

Column 6 controls for the confounding effects of both the spatial correlation and the intertemporal

<sup>20</sup>The Caloric Suitability Index (CSI) measures for each cell of 10 kms  $\times$  10 kms in the world, the average number of calories that could be potentially produced given the climatic conditions in that cell and the crops available in the pre-1500CE period.

volatility of temperature. In particular, Dean et al. (1985) argue that trade alliances among communities were common in regions with high spatial variability in climate. In addition, pre-modern societies could have mitigated the negative impact of climatic variation by extending the set of subsistence activities. Additionally, Ahlerup and Olsson (2012) show that temperature variation predicts ethnic diversity. Accounting for these potential confounders does not alter the results.

Columns 7 and 8 account for a potential concern that ethnicities’ isolation and access to the sea might jointly affect their population diversity and their economic specialization. In particular, proximity and access to the sea may ease contact with other societies, thus increasing population diversity and facilitating trade. Similarly, isolated ethnicities may be forced to specialize and also be less diverse. However, accounting for the fraction of the ethnic homeland located within 100 kilometers from the sea as well as the length of the ethnic homeland’s coastline (Column 7), and for the average ruggedness of the terrain, the average and the standard deviation of the pre-industrial mobility index developed by Özak (2012, 2010) does not alter the qualitative results.

Finally, column 9 accounts for the joint effect of all the previous confounders. The estimated effect of population diversity on economic specialization remains positive statistically and economically significant. In particular, a one standard deviation increase in population diversity increases, on average, economic specialization by one-third of its standard deviation. Figure 3(b) depicts this conditional association.

The point estimates reported so far may still be biased due to unobservable factors that correlate with both population diversity and economic specialization. In order to assess the effects of this potential bias on the results, Table 2 reports statistics for selection on unobservables (Altonji et al., 2005; Bellows and Miguel, 2009; Oster, 2014). To construct these statistics the specification in column 1, which only controls for the basic geographic variables discussed in Table 1, is taken as the baseline. Both the Altonji et al’s  $\delta$  statistics measure how strongly correlated any unobservables would have to be in order to account for the full size of the coefficient on population diversity (Altonji et al., 2005; Bellows and Miguel, 2009; Oster, 2014). As can be seen, in all columns Altonji et al’s statistic is larger (in absolute value) than 1, while the  $\delta$  statistic, which penalizes additionally for changes in the  $R^2$ , is larger than 1 once all the controls are included, suggesting that omitted variable bias is not driving the results. Moreover, the bias corrected  $\beta$ -Oster statistic is always positive, suggesting that *even* under omitted variable bias, the effect of population diversity on economic specialization is positive and economically significant. In particular, the estimates of column 9 suggest that the true effect of population diversity belongs to the interval  $[0.30, 0.31]$ , i.e. that a one standard deviation increase in genetic diversity generates almost one-third of a standard deviation increase in economic specialization.

## 4.2 Population Diversity and Distance to Addis Ababa

This section establishes the negative statistically and economically significant causal effect of the migratory distance from East Africa on population diversity as measured by genetic and linguistic diversity. In particular, the “Out-of-Africa” theory of the geographic origin and early migration of anatomically modern humans posits that the process leading to the peopling of planet Earth by anatomically modern humans started with their migration out of East Africa more than sixty thousand years ago

(Ramachandran et al., 2005; Cann et al., 1987; Pemberton et al., 2013). This process consisted of a series of discrete successive migrations, in which new settlements were established by smaller subgroups from an originally larger population. Since the population of a new settlement was not necessarily representative of the original population, the sampling process from subsequently smaller populations led to a loss of population diversity, i.e., the serial founder effect. Therefore, the Out-of-Africa theory predicts that population diversity decreases along the different migratory routes that humans followed out of East Africa.<sup>21</sup>

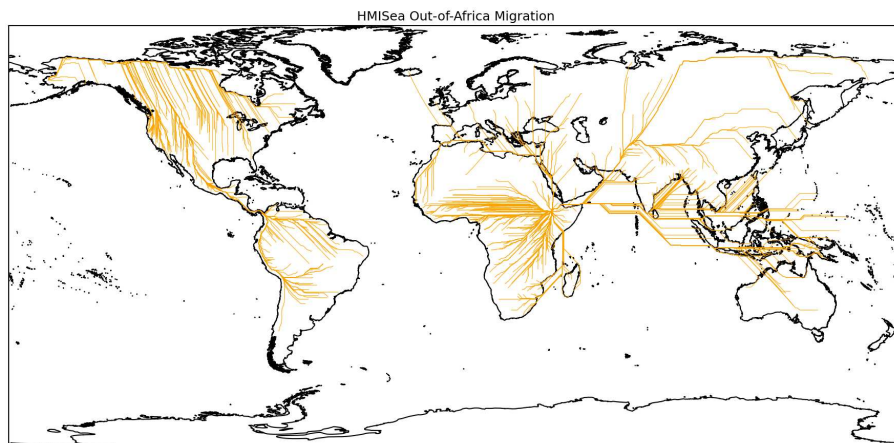


Figure 4: Potential Migratory Routes Out of East Africa

The analysis estimates the pre-industrial migratory distance to East Africa by finding the minimal travel times to Addis Ababa using the Human Mobility Index with Seafaring - HMISea (Özak, 2010, 2012). HMISea estimates the time (in weeks) required to walk across each square kilometer of land, accounting for the topographic, climatic, terrain conditions, and human biological abilities, as well as the time required to cross major seas with pre-industrial technologies. Figure 4 shows the potential migratory routes out of East Africa to the historical ethnic homelands that minimize the travel time according to HMISea. To overcome the potential concern of endogeneity of the actual historical patterns of migration, the analysis employs the HMISea travel time to the ethnic homeland as an instrument for population diversity.

Table 3 explores the relationship between migratory distance to Addis Ababa and genetic diversity (as measured by expected heterozygosity) for 144 ethnic groups for which geo-coded genetic and ethnographic data is available.<sup>22</sup> Two facts stand out from the results in Table 3: (i) migratory distance to Addis Ababa alone explains 72 percent of the variation in population diversity (column 1); and (ii) accounting for the potential confounding effects of all the controls included in Tables 1 and 2, both individually and jointly, affects remarkably little the point estimates for pre-industrial migratory distance to Addis Ababa. Furthermore, as shown in column 8, these results hold also for the restricted

<sup>21</sup>This prediction has been supported empirically using data from various population samples (Ramachandran et al., 2005; Cann et al., 1987; Pemberton et al., 2013; Atkinson, 2011).

<sup>22</sup>Similar results are obtained in the full sample of 267 ethnicities for which genetic data alone is available. The analysis omits islands for which the HMISea does not provide travel speed estimates. Still, the results are robust to imputation based on geodesic distances.

Table 3: Population Diversity and Distance to Addis-Ababa

	Population Diversity (Genetic)								
	Full Sample								Specia- lization
	(1)	(2)	(3)	(4)	(5)	(6)	(7)	(8)	(9)
Pre-Industrial Distance to Addis Ababa	-0.85*** (0.07)	-0.80*** (0.10)	-0.80*** (0.09)	-0.81*** (0.09)	-0.80*** (0.10)	-0.79*** (0.10)	-0.80*** (0.10)	-0.82*** (0.09)	-0.85*** (0.09)
Malaria Ecology			0.17*** (0.05)					0.20*** (0.07)	0.16** (0.08)
Agricultural Suitability (avg.)				-0.00 (0.06)				-0.01 (0.07)	-0.01 (0.07)
Agricultural Suitability (std.)				0.08 (0.06)				0.13** (0.06)	0.14* (0.07)
Caloric Suitability Index (Pre-1500CE)					0.02 (0.07)			0.07 (0.07)	0.09 (0.09)
Caloric Suitability (Pre-1500 ,std.)					-0.08 (0.05)			-0.13** (0.06)	-0.13* (0.07)
Pct. Area within 100kms of Sea						-0.00 (0.06)		0.13** (0.06)	0.14** (0.07)
Coast Length						0.03 (0.06)		0.04 (0.05)	0.01 (0.07)
Ruggedness (Avg.)							-0.03 (0.12)	-0.19 (0.13)	-0.19 (0.16)
Pre-Industrial Mobility (avg.)							0.05 (0.20)	0.12 (0.23)	0.13 (0.25)
Pre-Industrial Mobility (std.)							-0.13 (0.08)	-0.07 (0.11)	-0.07 (0.12)
Main Controls	No	Yes	Yes	Yes	Yes	Yes	Yes	Yes	Yes
Adjusted- $R^2$	0.72	0.72	0.74	0.72	0.72	0.72	0.73	0.75	0.73
$R^2$	0.72	0.74	0.75	0.74	0.74	0.74	0.75	0.78	0.76
Observations	144	144	144	144	144	144	144	144	116

Notes: This table establishes the negative statistically and economically significant relation between expected heterozygosity and the distance to Addis Ababa after accounting for the set of basic geographical controls of Table 1 and an extended set of confounders and measures of isolation. Standardized coefficients. Heteroskedasticity robust standard error estimates are reported in parentheses; \*\*\* denotes statistical significance at the 1% level, \*\* at the 5% level, and \* at the 10% level, all for two-sided hypothesis tests.

sample of 116 ethnic groups from previous section.

The importance of effect of the distance to Addis Ababa on genetic diversity is further confirmed by the semi-partial  $R^2$ .<sup>23</sup> In particular, the distance to Addis Ababa has the largest semi-partial  $R^2$  in the analysis; e.g. in column 8 it is 0.3, which is 15 times larger than the semi-partial of malaria ecology, which is the variable with the second largest value. This suggests that the variation that is uniquely related to the distance to Addis Ababa, explains 30% of the total variation in genetic diversity, while the variation that is specific to each of other variables explains less than 2% of the total variation in genetic diversity.

The strong predictive power of the pre-industrial distance to Addis Ababa on genetic diversity, and the stability of the estimated effect of distance to Addis Ababa to the inclusion of various potential

<sup>23</sup>Results not shown, but can be obtained from authors.

Table 4: Population Diversity and Distance to Addis-Ababa

	Population Diversity (Linguistic)								
	Consonant Inventory			Vowel Quality Inventory			Number of Genders		
	Full Sample	Specialization		Full Sample	Specialization		Full Sample	Specialization	
	(1)	(2)	(3)	(4)	(5)	(6)	(7)	(8)	(9)
Pre-Industrial Distance to Addis Ababa	-0.42*** (0.05)	-0.37*** (0.06)	-0.37*** (0.07)	-0.30*** (0.06)	-0.31*** (0.07)	-0.33*** (0.08)	-0.25*** (0.06)	-0.30*** (0.09)	-0.33*** (0.08)
Main Controls	No	Yes	Yes	No	Yes	Yes	No	Yes	Yes
Additional Geographical Controls	No	Yes	Yes	No	Yes	Yes	No	Yes	Yes
Adjusted- $R^2$	0.17	0.27	0.27	0.08	0.19	0.22	0.06	0.20	0.23
$R^2$	0.17	0.31	0.32	0.09	0.23	0.27	0.06	0.28	0.32
Observations	299	299	255	301	301	256	152	152	131

Notes: Notes: This table establishes the negative statistically and economically significant relation between measures of linguistic diversity and the distance to Addis Ababa after accounting for the set of basic geographical controls of Table 1 and an extended set of confounders and measures of isolation. Each column includes the same set of controls as the same column in Table 3. Standardized coefficients. Heteroskedasticity robust standard error estimates are reported in parentheses; \*\*\* denotes statistical significance at the 1% level, \*\* at the 5% level, and \* at the 10% level, all for two-sided hypothesis tests.

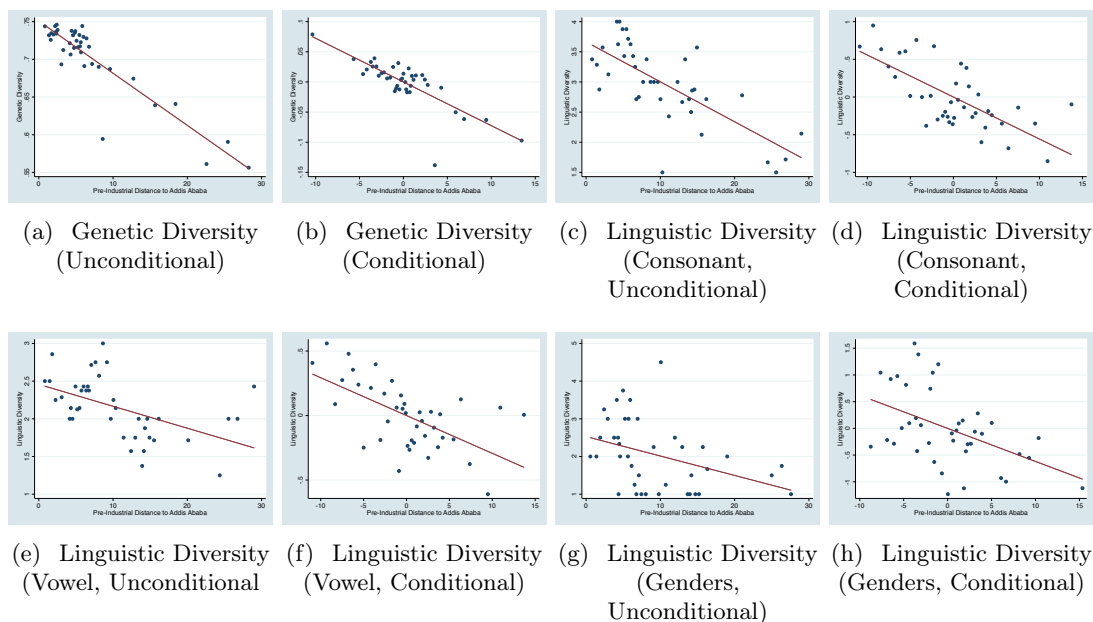


Figure 5: Pre-Industrial Distance to Addis-Ababa and Population Diversity

confounders, suggests that this distance is a valid instrument for diversity, giving, in particular, credence to the validity of the exclusion restriction. Nonetheless, section 4.6 provides additional checks on the validity of this instrument by accounting for the effect of other historical determinants of development.

Finally, the negative relation between the pre-industrial distance to Addis Ababa and population diversity is further confirmed in Table 4, which shows the relation between this distance and 3 measures of linguistic diversity. While the explanatory power of the pre-industrial distance to Addis Ababa is

lower for linguistic diversity than for genetic diversity, which is consistent with the larger measurement error of the former, the results still support the validity of pre-industrial distance to Addis Ababa as an instrument for population diversity. Figure 5 depicts the unconditional and conditional strong negative relationship between all the proxies of population diversity employed in the analysis and the pre-industrial migratory distance to Addis Ababa.

### 4.3 Population Diversity and Economic Specialization (Instrumental Variable Analysis)

This section establishes the positive causal effect of population diversity on economic specialization by exploiting an instrumental variable strategy based on the migratory distance to East Africa. As shown in the previous section, the migratory distance to East Africa is a valid instrument for population diversity, since (i) it is the main predictor of population diversity, due to the serial founder effect and the Out-of-Africa theory, and (ii) it only affects economic outcomes through its effect on diversity.<sup>24</sup>

Table 5: Population Diversity and Economic Specialization (IV)

	Economic Specialization									
	OLS		IV							
	(1)	(2)	(3)	(4)	(5)	(6)	(7)	(8)	(9)	(10)
Population Diversity	0.36*** (0.09)	0.51*** (0.12)	0.53*** (0.12)	0.54*** (0.12)	0.54*** (0.13)	0.45*** (0.14)	0.49*** (0.13)	0.44*** (0.11)	0.56*** (0.14)	0.46*** (0.14)
Main Controls	Yes	Yes	Yes	Yes	Yes	Yes	Yes	Yes	Yes	Yes
Additional Controls	-	-	Malaria	Eco. Div.	Agr. Suit.	CSI	Volatility	Sea	Mobility	All
First-stage F-statistic		56.99	59.31	59.04	65.63	52.61	55.27	53.29	63.44	81.54
Adjusted- $R^2$	0.15	0.14	0.21	0.19	0.15	0.17	0.16	0.19	0.15	0.39
Observations	116	116	116	116	116	116	116	116	116	116

Notes: This table establishes the positive statistically and economically significant causal effect of population diversity on economic specialization, by instrumenting population diversity with the distance to Addis Ababa (see section 4.2). These results are robust to accounting for the set of basic geographical controls of Table 1 and the extended set of confounders from Table 2. Standardized coefficients. Heteroskedasticity robust standard error estimates are reported in parentheses; \*\*\* denotes statistical significance at the 1% level, \*\* at the 5% level, and \* at the 10% level, all for two-sided hypothesis tests.

Table 5 presents the results of this instrumental variables (IV) analysis, in which population diversity as proxied by genetic diversity is instrumented by the migratory distance to East Africa for the set of 116 ethnicities for which genetic, ethnographic and geographic data exists. In order to facilitate comparison with the OLS results, column 1 replicates the analysis of column 5 in Table 1 by accounting for the effect of the set of basic geographic controls. Columns 2 through 10 use this IV strategy to establish the positive causal effect of population diversity on economic specialization, accounting for the set of controls of Table 2. The estimated effect is 22-55% larger than in the OLS analysis, and ranges between 0.44 and 0.56, implying an economically significant effect of population diversity on economic specialization. In particular, after accounting for all the confounders analyzed in table 2, a one standard deviation increase in population diversity causes about half a standard deviation increase in economic specialization. Importantly, these results are not subject to a weak instrument problem,

<sup>24</sup>Section 4.6 presents additional evidence in support of the exclusion restriction.

since the Kleibergen-Paap F-statistics for the first stage, reported at the bottom of the table, are all larger than the critical values suggested by Stock-Yogo.

Additionally, Table 6 establishes the robustness of the results to the measure of population diversity by replicating the main results of Table 5 for each of the three linguistic proxies of population diversity.<sup>25</sup> In particular, proxying population diversity with linguistic diversity as measured by consonant inventory, vowel quality inventory and the number of genders generates qualitatively similar results, although the standardized estimates of the effect of population diversity are larger.

Table 6: Population Diversity and Economic Specialization (IV)  
Linguistic Diversity

	Economic Specialization								
	Linguistic Diversity (Consonant Inventory)			Linguistic Diversity (Vowel Quality Inventory)			Linguistic Diversity (Number of Genders)		
	OLS	IV		OLS	IV		OLS	IV	
	(1)	(2)	(3)	(4)	(5)	(6)	(7)	(8)	(9)
Population Diversity	0.19*** (0.06)	1.13*** (0.20)	1.25*** (0.28)	0.39*** (0.06)	1.13*** (0.24)	1.34*** (0.35)	0.11 (0.08)	1.18*** (0.29)	0.90*** (0.33)
Main Controls	Yes	Yes	Yes	Yes	Yes	Yes	Yes	Yes	Yes
Additional Geographical Controls	No	No	Yes	No	No	Yes	No	No	Yes
First-stage F-statistic		45.11	27.63		22.85	18.08		29.40	17.22
Adjusted- $R^2$	0.06	-0.69	-0.81	0.17	-0.34	-0.59	-0.02	-1.04	-0.50
Observations	255	255	255	256	256	256	131	131	131

Notes: This table establishes the positive statistically and economically significant causal effect of population diversity on economic specialization, by instrumenting population diversity (as proxied by linguistic diversity measures) with the distance to Addis Ababa (see section 4.2). These results are robust to accounting for the set of basic geographical controls of Table 1 and the extended set of confounders from Table 2. Standardized coefficients. Heteroskedasticity robust standard error estimates are reported in parentheses; \*\*\* denotes statistical significance at the 1% level, \*\* at the 5% level, and \* at the 10% level, all for two-sided hypothesis tests.

Finally, the results are robust to the measure of economic specialization used (see section 3.1 for the construction of the different measures). In particular, employing the alternative measures of economic specialization generates qualitatively identical results and imply a positive causal effect of population diversity on economic specialization (Tables 8 and C.9). Moreover, varying both the measure of economic specialization and the proxy of population diversity does not affect the results either (Tables E.9 and E.10).

#### 4.4 Predicted Population Diversity and Economic Specialization

This section provides additional support for the positive causal effect of population diversity on economic specialization. In particular, a potential concern with the previous analysis is that it is based on samples of ethnicities, for which both population diversity (either genetic or linguistic) and economic specialization data is available, which could be a potential source of bias. In order to address this potential concern, this section employs a two-step econometric model to generate a measure of population diversity as predicted by the pre-industrial migratory distance to Addis Ababa in order to

<sup>25</sup>Tables E.5-E.8 fully replicate Table 5 for each of the linguistic proxies of population diversity.

further explore this causal effect (Murphy and Topel, 2002; Ashraf and Galor, 2013b). In particular, based on the estimated relation between the migratory distance to Addis Ababa and population diversity in the subsamples of ethnicities analyzed in section 4.2, the analysis predicts population diversity for all ethnicities in the Ethnographic Atlas. This strategy expands roughly eightfold the sample of ethnicities for which diversity and specialization data is available. Moreover, it allows the analysis to be performed on additional ethnographic data. Finally, as in the case of the previous IV approach, the estimated effect of predicted population diversity can be given a causal interpretation, since by construction it captures only the exogenous variation in diversity generated by the serial founder effect and the Out-of-Africa theory.<sup>26</sup>

The baseline regression specification in this section is given by

$$Specialization_i = \alpha + \beta \widehat{PD}_i + G_i' \Gamma + X_i' \Delta + \epsilon_i \quad (2)$$

where the only difference with respect to equation (1) is the inclusion of  $\widehat{PD}_i$ , which is the predicted population diversity implied by the relation between migratory distance to Addis Ababa and population diversity accounting for all additional controls.<sup>27</sup> Since this analysis exploits a generated regressor, standard errors are computed using a bootstrapping procedure.<sup>28</sup>

Based on this extended sample, the analysis replicates in columns 1 to 10 of Table 7 the main econometric specifications of Tables 1, 2, and 5. The positive causal effect of population diversity on economic specialization remains statistically and economically significant. Furthermore, the point estimates are remarkably stable across specifications, supporting the view that the effect of predicted population diversity is not biased by omitted factors. Moreover, the size of the estimated effect of population diversity on economic specialization in this expanded sample lies between the OLS and IV estimates of the reduced sample (see Tables 2 and 5).

Column 11 establishes that the positive causal effect of population diversity on economic specialization is robust to accounting for unobserved time-invariant continent-specific attributes. Indeed, if anything, the inclusion of continental fixed effects increases the estimated effect of diversity. In particular, the estimates in columns 10 and 11 imply that a standard deviation increase in predicted population diversity increases economic specialization by more than a half of a standard deviation.<sup>29</sup>

<sup>26</sup>Two-step econometric procedures yield consistent estimates of second stage parameters, although the second-step standard error estimates may be incorrect, if they do not account for the additional uncertainty due to the two-step procedure (Murphy and Topel, 2002). In order to address this issue, the analysis employs a bootstrapping procedure to correctly estimate standard errors.

<sup>27</sup>Given that the analysis exploits a unique source of exogenous variation, the results are identical if one employs the levels of predicted population diversity based on genetic or linguistic diversity data. In particular, conditional on a set of covariates, predicted levels of population diversity based on genetic diversity and linguistic diversity measures are perfectly correlated. Thus, the estimated causal effects of predicted population diversity are equivalent under both predicted measures once one accounts for the differences in the scale of both proxies of population diversity. So, the analysis only presents one set of results in the rest of the paper.

<sup>28</sup>In particular, a random sample of ethnicities with both diversity and migratory distance data is drawn with replacement out of the original sample. Then a specification similar to column 8 of Table 3 of section 4.2 is re-estimated, accounting for the same set of controls as in the second-stage. Using these new estimates population diversity is predicted again and equation (2) is re-estimated. This procedure is repeated 1001 times and the distribution of the bootstrapped coefficients is used to compute the standard errors. A similar procedure was proposed in Ashraf and Galor (2013b).

<sup>29</sup>Table D.2 shows the point estimates of the reduced form economic specialization-distance to Addis Ababa for all the specifications in Table 7. The point estimates for pre-industrial distance to Addis Ababa are remarkably stable and



Table 7: Predicted Population Diversity and Economic Specialization

	Economic Specialization										
	(1)	(2)	(3)	(4)	(5)	(6)	(7)	(8)	(9)	(10)	(11)
Predicted Population Diversity	0.44*** (0.02)	0.42*** (0.03)	0.49*** (0.03)	0.42*** (0.03)	0.41*** (0.03)	0.46*** (0.04)	0.40*** (0.03)	0.42*** (0.04)	0.42*** (0.03)	0.53*** (0.07)	0.59*** (0.21)
Main Controls	No	Yes	Yes	Yes	Yes	Yes	Yes	Yes	Yes	Yes	Yes
Additional Controls	-	-	Malaria	Eco. Div.	Agr. Suit.	CSI	Volatility	Sea	Mobility	All	All
Continental FE	No	No	No	No	No	No	No	No	No	No	Yes
Adjusted- $R^2$	0.19	0.22	0.23	0.24	0.22	0.24	0.22	0.21	0.23	0.29	0.32
Observations	934	934	934	934	934	934	934	934	934	934	934

Notes: This table establishes the positive statistically and economically significant causal effect of population diversity as predicted by the distance to Addis Ababa (see section 4.2) on economic specialization. These results are robust to accounting for the set of basic geographical controls of Table 1 and the extended set of confounders from Table 2. Standardized coefficients. Bootstrapped standard error estimates in parenthesis; \*\*\* denotes statistical significance at the 1% level, \*\* at the 5% level, and \* at the 10% level, all for two-sided hypothesis tests.

Figure 6 depicts the conditional relations in columns (10) and (11) using binned scatter plots. Among all the determinants studied in these two specifications, population diversity has the highest semi-partial  $R^2$ , i.e. the explanatory power uniquely associated with population diversity is larger than the one associated with any other determinant of economic specialization. In particular, population diversity’s semi-partial  $R^2$  is 1300% and 50% larger, in columns (10) and (11) respectively, than the highest semi-partial  $R^2$  associated with any geographical determinant of economic specialization.

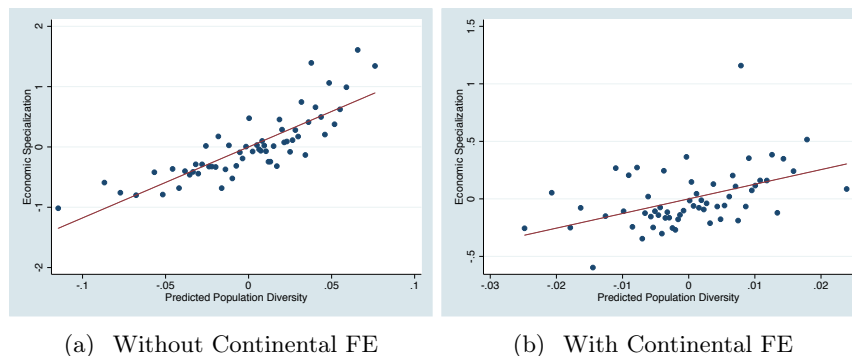


Figure 6: Predicted Population Diversity and Economic Specialization  
Conditional Relations Accounting for All Geographical Controls

The estimated effect of predicted population diversity on economic specialization is robust to the measure of specialization used as well as to the estimation method employed in the analysis. In particular, Table 8 establishes that all results presented so far hold for all three measures of economic specialization. Interestingly, population diversity’s effect on economic specialization is stronger when the measure of economic specialization is based on the share of activities that are specialized. Since this measure should be the less affected by any potential confounding effect of development, this result suggests that other sources of development are not confounding the effect of population diversity.

strongly statistically significant.

Table 8: Population Diversity and Specialization Measures

	Economic Specialization Measures								
	Number			Share			Score		
	OLS	IV	Full	OLS	IV	Full	OLS	IV	Full
	(1)	(2)	(3)	(4)	(5)	(6)	(7)	(8)	(9)
Population Diversity	0.27*** (0.05)	0.46*** (0.14)	0.59*** (0.21)	0.33*** (0.05)	0.37*** (0.12)	0.73*** (0.17)	0.13** (0.06)	0.31** (0.14)	0.41** (0.18)
Main Controls	No	Yes	Yes	No	Yes	Yes	No	Yes	Yes
All Additional Controls	No	Yes	Yes	No	Yes	Yes	No	Yes	Yes
Continental FE	No	No	Yes	No	No	Yes	No	No	Yes
First-stage F-statistic		81.54			81.54			81.54	
$R^2$	0.08	0.49	0.34	0.11	0.49	0.40	0.02	0.46	0.25
Adjusted- $R^2$	0.07	0.39	0.32	0.10	0.39	0.39	0.01	0.35	0.23
Observations	116	116	934	116	116	934	116	116	934

Notes: This table establishes the positive statistically and economically significant causal effect of population diversity as predicted by the distance to Addis Ababa (see section 4.2) on various measures of economic specialization. These results are robust to accounting for the set of basic geographical controls of Table 1 and the extended set of confounders from Table 2. Standardized coefficients. Bootstrapped standard error estimates in parenthesis; \*\*\* denotes statistical significance at the 1% level, \*\* at the 5% level, and \* at the 10% level, all for two-sided hypothesis tests.

A potential concern with these results is that they may be driven by the empirical specification chosen. In particular, the main measure of economic specialization is a count variable, while another is a share, which may cause OLS estimates to be biased. On the other hand, the results may be biased given the large number of societies that do not have economic specialization. In order to address these concerns, the research replicates the analysis employing Poisson, Negative Binomial, and fractional regression methods, as well as their zero-inflated variants and zero-inflated beta regressions (see Appendix C.2). Reassuringly, the results are robust to the empirical specification chosen and the estimated effect of predicted population diversity on economic specialization remains positive, statistically and economically significant. Moreover, accounting for the potential historical and spatial dependence of observations by allowing the error terms to be correlated within language phyla or across space does not alter the qualitative nature of the results (see Appendix C.3).

#### 4.5 Complementary Effect of Population and Geographical Diversity on Economic Specialization

This section explores whether, as suggested by the theory, diverse populations enjoy complementarities with diverse geographical and ecological endowments. In particular, the effect of population diversity on economic specialization might be higher in locations with diverse geography, given that diverse preferences or skills could potentially allow diverse endowments and ecologies to be exploited better and, thus, generate higher levels of economic specialization.

Table 9 analyzes the potential complementarity between population and geographical diversity by analyzing the heterogeneous effects of population diversity on economic specialization. In particular, it shows the main effect of population diversity and its interaction with ecological diversity, the standard deviation of agricultural suitability, temperature volatility, the standard deviation of ruggedness of

Table 9: Predicted Population Diversity and Economic Specialization  
Complementarity with Heterogeneous Environments

	Economic Specialization					
	(1)	(2)	(3)	(4)	(5)	(6)
Predicted Population Diversity	0.59*** (0.25)	0.49*** (0.26)	0.45*** (0.26)	0.46*** (0.30)	0.55*** (0.26)	0.54*** (0.28)
Predicted Population Diversity × Ecological Diversity		0.80*** (0.38)				
Predicted Population Diversity × Precipitation (Volatility, Std.)			1.16** (0.57)			
Predicted Population Diversity × Temperature (Spatial Corr., Std.)				0.70* (0.65)		
Predicted Population Diversity × Precipitation (Spatial Corr., Std.)					0.77** (0.43)	
Predicted Population Diversity × Ruggedness (Avg.)						1.08** (0.59)
Main Controls & Main Effects	Yes	Yes	Yes	Yes	Yes	Yes
All Additional Controls	Yes	Yes	Yes	Yes	Yes	Yes
Continental FE	Yes	Yes	Yes	Yes	Yes	Yes
Adjusted- $R^2$	0.32	0.33	0.33	0.34	0.34	0.33
Observations	934	934	934	934	934	934

Notes: This table establishes the positive statistically and economically significant causal effect of population diversity as predicted by the distance to Addis Ababa (see section 4.2) on economic specialization. Additionally, it establishes the heterogeneity of the effect and the complementarity between population diversity and variations in environmental and geographical factors. These results are robust to accounting for the set of geographical controls of Table 7, continental fixed effects and an extended set of geographical diversity measures (i.e., main/level effects and interactions). Standardized coefficients. Bootstrapped standard error estimates in parenthesis; \*\*\* denotes statistical significance at the 1% level, \*\* at the 5% level, and \* at the 10% level, all for two-sided hypothesis tests.

the terrain, and the standard deviation of pre-industrial mobility.<sup>30</sup> As can be seen there, all main effects and interactions of population diversity are positive and highly statistically and economically significant. Moreover, the statistical significance is even higher if one excludes of continental fixed effects from the analysis. The estimates imply that the more diverse a population and the more diverse the geography in which it lives, the higher the level of economic specialization.

As suggested by the theory diverse populations enjoy complementarities with positive effects on economic specialization of living in diverse geographical areas. This result provides a link between the seemingly contradictory theories based on the composition of the population (Ashraf and Galor, 2013b,a) and those based on geographical factors (Galor and Özak, 2016, 2015). In particular, it provides an explanation as to why economies with similar populations or environments might have different economic outcomes.

#### 4.6 Population Diversity, Economic Specialization, and Historical Confounders

This section establishes that the positive causal effect of population diversity on economic specialization is robust to accounting for other historical sources of pre-industrial development. Thus, overcoming

<sup>30</sup>The estimated coefficients are again reported as standardized betas, which simplifies the comparison of the main effects across tables. Of course, this makes the interpretation of the interactions difficult, but given that both main effects and interactions are positive, the qualitative nature of the effects is directly observable from the table.

the potential concern that population diversity is capturing the effect of factors like the transition to agriculture or the history of settlement or the existence of centralized institutions on economic specialization. Moreover, it overcomes the potential concern that the established causal effect of population diversity is capturing its effect on pre-industrial development, with the latter potentially being the actual source of economic specialization.

Table 10: Predicted Population Diversity, Economic Specialization and Other Historical Confounders

	Economic Specialization					
	(1)	(2)	(3)	(4)	(5)	(6)
Predicted Population Diversity	0.59*** (0.25)	0.63*** (0.27)	0.35** (0.22)	0.38** (0.21)	0.43** (0.22)	0.58*** (0.26)
Distance Neolithic Frontier		-0.12*** (0.06)				
Distance Frontier (1CE)			-0.21*** (0.05)			
Distance Frontier (1000CE)				-0.21*** (0.05)		
Distance Frontier (1500CE)					-0.22*** (0.05)	
Duration of Continuous Human Presence						0.03 (0.16)
Main Controls	Yes	Yes	Yes	Yes	Yes	Yes
All Additional Controls	Yes	Yes	Yes	Yes	Yes	Yes
Continental FE	Yes	Yes	Yes	Yes	Yes	Yes
Adjusted- $R^2$	0.32	0.34	0.35	0.35	0.35	0.33
Observations	934	932	932	932	932	925

Notes: This table establishes the positive statistically and economically significant causal effect of population diversity as predicted by the distance to Addis Ababa (see section 4.2) on economic specialization after accounting for other potential historical sources of specialization and development. All columns account for the set of geographical controls of Table 7 and continental fixed effects. Standardized coefficients. Bootstrapped standard error estimates in parenthesis; \*\*\* denotes statistical significance at the 1% level, \*\* at the 5% level, and \* at the 10% level, all for two-sided hypothesis tests.

Table 10 analyzes the robustness of the results to accounting for additional potential historical sources of pre-industrial development and economic specialization, which were generated by migratory or diffusion processes. Thus, it additionally explores the validity of the exclusion restriction. Column 1 replicates the results of column 11 in Table 7 and serves as a baseline point of comparison. Column 2 analyzes the potential confounding effect of the long-lasting influence of the Neolithic Revolution by accounting for the pre-industrial distance to the closest Neolithic frontier. As argued by Diamond (1997), an earlier transition from hunting and gathering practices to agriculture provided an initial advantage to some societies, which later translated into a persistent technological superiority. Moreover, it has been suggested that an earlier transition to agriculture allowed the creation of an economic surplus and the emergence of economic specialization (Boix, 2015). Additionally, country-level precolonial development has been positively associated with the time since the Neolithic Revolution (Ashraf and Galor, 2011). In line with these findings, column 2 shows that the pre-industrial distance to the closest Neolithic frontier does have a negative effect on economic specialization. Still, the estimated effect of

predicted population diversity on economic specialization remains positive strongly statistically and economically significant, suggesting that the omission of the Neolithic transition was not spuriously driving the main results.<sup>31</sup>

Additionally, columns 3-5 analyze the potential confounding effect of the pre-modern distance from the closest technological frontier in the years 1, 1000 and 1500CE identified by Ashraf and Galor (2011). In particular, if technology diffuses from a technological frontier, one can expect ethnicities close to the frontier to acquire more technologies and develop economically, all of which might potentially be conducive to economic specialization. Indeed, the estimated effect of the distance from the frontier on economic specialization is negative statistically and economically significant, in line with this prediction. Still, the estimated positive causal effect of predicted population diversity on economic specialization remains statistically and economically significant.

Column 6 includes an indicator of the duration of human settlements since prehistoric times, which estimates the date since the first uninterrupted settlement by anatomically modern humans (Ahlerup and Olsson, 2012).<sup>32</sup> Clearly, this measure should be highly correlated with migratory distance to Addis Ababa and population diversity, since the closer a location is to Addis Ababa, the earlier it could have been populated by anatomically modern humans. Thus, the omission of the duration of continuous human presence may bias the estimated effect of population diversity documented above, if a longer history of uninterrupted settlement facilitated the division of labor via, for example, a greater chance for the emergence of social stratification or a dominant elite.<sup>33</sup> However, the results in column 6 reveal that accounting for the duration of continuous human presence has a negligible impact on the estimated effect of predicted population diversity. The effect of population diversity on economic specialization remains positive, strongly statistically and economically significant: a standard deviation increase in the proposed measure of population diversity explains one fourth of the standard deviation of economic specialization. This suggests the previous results were not picking up the potential effect of a longer settlement duration on the division of labor in pre-modern societies.

Finally, the presence or absence of institutions and statehood may have directly affected both the population composition and economic specialization. In particular, States may have fostered the assimilation/segregation/isolation of its population, as well as set the rules of the game and thus affect the economic opportunities and incentives of its population. Table 11 explores whether the existence of centralized institutions affects the causal effect of population diversity on economic specialization. In particular, the table replicates the analysis for the sample of ethnicities with and without a centralized state (Fenske, 2014). This ethnographic measure has been considered the main indicator of the strength and importance of institutions in pre-colonial times (Michalopoulos and Papaioannou, 2013; Gennaioli and Rainer, 2007; Fenske, 2014). As can be seen in Table 11 the positive causal effect of population diversity on economic specialization is not mediated by the existence of a state. Moreover, the fact

---

<sup>31</sup>Alternatively, accounting for the degree of subsistence dependence on agriculture, as measured in the Ethnographic Atlas (v5), does not alter the results either.

<sup>32</sup>Given that the original data is available at the country level, the analysis follows the literature and constructs ethnic level measures by creating population-weighted averages (Alesina et al., 2013; Giuliano and Nunn, 2013; Gennaioli and Rainer, 2007).

<sup>33</sup>In fact, Ahlerup and Olsson (2012) show that the historical duration of human settlements is a strong predictor of ethnolinguistic fractionalization.

Table 11: Predicted Population Diversity and Economic Specialization  
Ethnicities with and without Centralized States

	Economic Specialization					
	No Centralized State			Any Centralized State		
	(1)	(2)	(3)	(4)	(5)	(6)
Predicted Population Diversity	0.46*** (0.03)	0.39*** (0.04)	0.50*** (0.10)	0.30*** (0.04)	0.36*** (0.05)	0.40*** (0.08)
Main Controls	No	Yes	Yes	No	Yes	Yes
Additional Controls	No	No	Yes	No	No	Yes
Adjusted- $R^2$	0.21	0.24	0.30	0.09	0.14	0.24
Observations	433	433	433	479	479	479

Notes: This table establishes that the positive statistically and economically significant causal effect of population diversity as predicted by the distance to Addis Ababa (see section 4.2) on economic specialization is not mediated by the existence of a (pre-industrial) State. These results are robust to accounting for the set of basic geographical controls of Table 1 and the extended set of confounders from Table 2. Standardized coefficients. Bootstrapped standard error estimates are reported in parentheses; \*\*\* denotes statistical significance at the 1% level, \*\* at the 5% level, and \* at the 10% level, all for two-sided hypothesis tests.

that population diversity generates economic specialization in the sample of ethnicities that do not have a state, implies that the existence of a state is not a necessary precondition for the emergence of economic specialization. This is a striking result given the strong believe among some scholars that institutions, especially the State, are essential to economic activity and organization.

## 5 Economic Specialization and Economic Development

This section explores the consequences of pre-modern economic specialization on economic development. In particular, it establishes a strong positive association between levels of economic specialization and economic development in the pre-modern era. Moreover, it shows that pre-modern economic specialization predicts modern economic development. This analysis should be regarded as providing suggestive evidence for the importance of pre-modern economic specialization for comparative development. Still, identifying the precise causal effect of economic specialization on economic development, with any reasonable degree of certainty, is a difficult task given the potential bias due to omitted factors and reverse causality. Nonetheless, the following analysis advances the hypothesis of a causal and persistent effect of pre-modern economic specialization on development, by accounting for a large set of potential confounders, regional fixed effects, and exploiting an “atheoretical” instrumental variables approach.

### 5.1 Economic Specialization and Pre-industrial Development

This section analyzes the effect of economic specialization on pre-industrial economic development. In particular, Table 12 explores the potentially beneficial effects of economic specialization on technological specialization (column 1), socio-economic complexity (column 2), population density (column 3),

mean size of local communities (column 4), levels of statehood (column 5), and the existence of class stratification (column 6).

Panel A shows the positive association between economic specialization and these measures of pre-industrial development. In particular, the estimated coefficients imply that a one standard deviation increase in economic specialization is associated with about 0.4 standard deviations increase in pre-industrial development.

Panel B suggests that, with the exception of class stratification, any potential effect of population diversity on pre-industrial development is mediated by its effect on economic specialization. In particular, predicted population diversity is not statistically significantly associated with pre-industrial development with the exception of its association with the mean size of local communities and class stratification.

Although it is reassuring that economic specialization has a positive association with these measures of pre-industrial development, clearly, these associations cannot be given a causal interpretation due to endogeneity concerns. Particularly, the potential reverse causality from pre-industrial development to economic specialization is a major concern. Moreover, it is difficult to find an instrument based on theoretical economic arguments, which affects economic specialization *without* having a potential direct effect on pre-industrial development.<sup>34</sup>

In order to address this issue, this research employs “atheoretical” instrumental variables suggested by Lewbel (2012). Lewbel (2012) exploits the moment conditions in a cross section to identify structural parameters in regression models with endogenous or mismeasured regressors in the absence of traditional identifying information. This IV strategy follows in the spirit of Arellano and Bond (1991) and Blundell and Bond (1998), who also generate “atheoretical” instruments using moment conditions in a dynamic panel data setting. While the identification in Arellano and Bond (1991) and Blundell and Bond (1998) comes from temporal variations, Lewbel (2012) bases the identification on the heteroskedastic structure of residuals obtained in an auxiliary regression of the main endogenous variable (economic specialization) on a set of covariates included in the model (geographical controls).

In particular, consider the regression of a variable  $Y$  (pre-industrial development) on an endogenous variable  $S$  (economic specialization) and a set of exogenous variables  $X$  (geographical controls).<sup>35</sup> Lewbel (2012) establishes that if  $X$  are exogenous, then the variables  $Z_j = (X_j - E(X_j))\epsilon_S$ ,  $j = 1, \dots$ , where  $E(X_j)$  is the expected value of  $X_j$  and  $\epsilon_S$  is the residual of the auxiliary regression of  $S$  on  $X$  (as in Table 7), are valid instruments for  $S$  in the regression of  $Y$  on  $S$  and  $X$ , as long as  $\epsilon_S$  is not homoskedastic. Panel C of Table 12 employs this method to establish the positive economically and statistically significant effect of economic specialization on pre-industrial development. The Breusch-Pagan test suggests the presence of heteroskedasticity, ensuring the main condition for identification is satisfied. Furthermore, the analysis exploits one of the strengths of Lewbel’s method, which is the

---

<sup>34</sup>Using predicted population diversity as an instrument for economic specialization, generates similar estimates of the positive effect of economic specialization on development. But, this results is not robust to accounting for continental fixed effects in the smaller samples, in which case the instrument is weak. Moreover, as suggested by Panels B and C, population diversity may affect economic development directly, beyond its effect on economic specialization, thus, potentially violating the exclusion restriction.

<sup>35</sup>The analysis excludes the measures of isolation and mobility, since they tend to violate the exclusion restriction and invalidate some of the analysis.

Table 12: Economic Specialization and Pre-Industrial Development

	Pre-Industrial Development					
	Technological Specialization	Complexity	Population Density	Mean Size of Local Communities	Statehood Level	Class Stratification
	(1)	(2)	(3)	(4)	(5)	(6)
Panel A: Effect of Specialization						
Economic Specialization	0.45*** (0.08)	0.52*** (0.07)	0.39*** (0.07)	0.38*** (0.04)	0.43*** (0.03)	0.22*** (0.03)
Adjusted- $R^2$	0.50	0.57	0.51	0.46	0.48	0.32
Panel B: Mediation (OLS)						
Economic Specialization	0.45*** (0.08)	0.52*** (0.07)	0.40*** (0.07)	0.40*** (0.04)	0.43*** (0.03)	0.21*** (0.03)
Predicted Population Diversity	-0.16 (0.35)	-0.32 (0.25)	-0.33 (0.33)	-0.30* (0.18)	0.15 (0.12)	0.38** (0.16)
Adjusted- $R^2$	0.49	0.57	0.51	0.46	0.48	0.32
Panel C: Mediation (IV)						
Economic Specialization	0.38*** (0.09)	0.42*** (0.09)	0.34*** (0.08)	0.39*** (0.04)	0.42*** (0.04)	0.24*** (0.03)
Predicted Population Diversity	-0.14 (0.32)	-0.30 (0.23)	-0.32 (0.30)	-0.29* (0.17)	0.15 (0.12)	0.36** (0.15)
Breusch-Pagan F-stat	22.63	22.63	20.48	32.61	51.23	48.84
Breusch-Pagan p-value	0.00	0.00	0.00	0.00	0.00	0.00
First-stage F-statistic	26.21	26.21	27.43	47.88	54.85	51.89
Hansen's J-statistic	34.80	25.19	23.47	32.34	28.17	34.83
J-stat p-value	0.04	0.29	0.38	0.07	0.17	0.04
Adjusted- $R^2$	0.49	0.57	0.51	0.46	0.48	0.32
Main Controls	Yes	Yes	Yes	Yes	Yes	Yes
Additional Controls	Yes	Yes	Yes	Yes	Yes	Yes
Continental FE	Yes	Yes	Yes	Yes	Yes	Yes
Observations	168	168	166	509	912	879

Notes: Notes: This table establishes the positive effect of economic specialization on pre-industrial development (Panel A). Panels B and C establish that economic specialization mediates the effect of population diversity on pre-industrial development. Panel C exploits an instrumental variable approach to establish the causal effect of economic specialization. These results account for the set of basic geographical controls of Table 1, an extended set of confounders and continental fixed effects. Standardized coefficients. Bootstrapped standard error estimates are reported in parentheses; \*\*\* denotes statistical significance at the 1% level, \*\* at the 5% level, and \* at the 10% level, all for two-sided hypothesis tests.

possibility of leveraging multiple instruments, thus allowing for over-identification tests. The results of Hansen's J test for overidentification restrictions in Table 12 suggest that the instruments are valid for the analysis of the effect of economic specialization on socio-economic complexity, population density and statehood levels. Interestingly, the estimated effect is quite similar across measures of pre-industrial development and imply that a one standard deviation increase in economic specialization increased pre-industrial development by 0.4 standard deviations.

Taken together, these results suggest that under the identifying assumptions underlying Lewbel's method, economic specialization causally impacts pre-industrial development and is a major mediating channel through which predicted population diversity affects pre-industrial development.



## 5.2 Persistent Effects of Pre-Industrial Economic Specialization on Contemporary Economic Development

This section explores whether historical levels of economic specialization have an effect on contemporary development. In particular, as established in the previous sections, pre-modern economic specialization had a positive effect on the emergence of pre-modern states, pre-industrial development, economic complexity and technology. Thus, if these institutions or technologies persist across time, it is conceivable that pre-modern economic specialization might have a persistent effect on economic development. On the other hand, pre-modern economic specialization may have fostered the emergence of certain cultural traits or the accumulation of a diverse set of production-specific knowledge due to learning by doing processes, all of which might still affect contemporary development.

Table 13: Pre-industrial Economic Specialization and Contemporary Economic Development

	Average Light Density (Inverse Hyperbolic Sine Transformation)							
	Whole World				Old World			
	OLS		IV		OLS		IV	
	(1)	(2)	(3)	(4)	(5)	(6)	(7)	(8)
Pre-modern Economic Specialization	0.13*** (0.03)	0.15*** (0.03)	0.12*** (0.03)	0.17*** (0.03)	0.16*** (0.04)	0.19*** (0.04)	0.15*** (0.04)	0.18*** (0.04)
Regional FE	Yes	Yes	Yes	Yes	Yes	Yes	Yes	Yes
Main Controls	No	Yes	Yes	Yes	No	Yes	Yes	Yes
All Additional Controls	No	No	Yes	Yes	No	No	Yes	Yes
First-stage F-statistic				63.88				34.34
Hansen's J-statistic				40.32				40.31
J-stat p-value				0.29				0.18
Adjusted- $R^2$	0.37	0.42	0.53	0.25	0.41	0.48	0.56	0.25
Observations	932	932	932	932	591	591	591	591

Notes: This table establishes the persistent positive statistically and economically significant effect of pre-modern economic specialization on economic development. These results account for the set of geographical controls in Table 7 and regional fixed effects. Standardized coefficients. Heteroskedasticity robust standard error estimates are reported in parentheses; \*\*\* denotes statistical significance at the 1% level, \*\* at the 5% level, and \* at the 10% level, all for two-sided hypothesis tests.

Table 13 explores the potential persistent effect of pre-modern economic specialization on contemporary ethnic-level development.<sup>36</sup> In particular, it establishes the positive statistically and economically significant association between pre-modern levels of economic specialization and contemporary development as measured by the intensity of night-time lights (Henderson et al., 2012; Michalopoulos and Papaioannou, 2013). Columns 1-3 show that after accounting for the effect of unobserved regional heterogeneity and geography, ethnic groups with higher levels of pre-modern economic specialization have higher light density per area of their homeland, and thus higher levels of contemporary economic development.

<sup>36</sup>The main dependent variable in Table 13 uses the inverse hyperbolic sine transformation of light density in order to account for the problem of zero light density. Similar results are obtained if instead one uses a log-transformation (see Tables F.1-F.3).

Columns 5-7 exclude the New World from the analysis, since light density of ethnic homelands in the Americas might be capturing the effects of population replacement and migration after 1500CE.<sup>37</sup> In fact, the estimated positive effect of economic specialization on contemporary economic development is even larger in the Old World sample. In particular, the Old World sample suggests that a one-standard deviation increase in pre-modern economic development generates 0.15 standard deviations increase in light density.

Clearly, the positive correlation between pre-modern economic specialization and contemporary economic development cannot be given a fully causal interpretation, since the analysis may be subject to omitted variable bias. In order to delve further into the potential positive and persistent effect of specialization on development, columns 4 and 8 again exploit the method for constructing “atheoretical” instrumental variables suggested by Lewbel (2012), to identify the causal effect of pre-modern economic specialization on contemporary economic development.<sup>38</sup> Instrumenting economic specialization increases its estimated effect on development. Moreover, the first-stage  $F$ -statistic shows that the instruments are strong, and Hansen’s over-identification test cannot reject the hypothesis that the instruments satisfy the exclusion restriction. Thus, these results suggest the causal nature of the positive effect of pre-modern economic specialization on contemporary development.

### 5.2.1 Mechanisms

In order to further analyze potential channels through which pre-modern economic specialization might affect contemporary development, the analysis explores the effect of pre-modern economic specialization on contemporary occupational heterogeneity, i.e. the number of distinct economic occupations performed by members of an ethnicity. The analysis explores this hypothesis using the third round of the Afro-Barometer, which includes both data on ethnicity and occupation.<sup>39</sup> Columns 1-2 in Table 14 establish that pre-modern economic specialization has a positive statistically and economically significant association with contemporary occupational heterogeneity after accounting for the full set of geographical controls and for regional fixed effects. Column 3 again follows Lewbel (2012) and instruments pre-modern economic specialization without affecting the qualitative results. Moreover, the  $F$ -statistic for the first stage suggests that the instruments are strongly correlated with specialization, while Hansen’s over-identification tests suggests that the instruments are valid. Columns 4-6 replicate the analysis, but weigh each ethnicity according to the number of individuals of the ethnicity surveyed in the Afro-barometer. Reassuringly, the results are qualitatively similar. In particular, the estimates suggest that an additional specialized activity in pre-modern times is associated with 0.83 additional contemporary occupations performed by an ethnicity. Given the positive correlation between contemporary occupational heterogeneity and economic development, this result suggests a novel channel through which pre-modern economic specialization might affect comparative development.

Table 15 further explores this channel. It analyzes the differential effect of pre-modern economic

---

<sup>37</sup>Since an interregional, ethnic-level migration post-1500CE matrix, à la Putterman and Weil (2010) does not exist, the analysis cannot account for the ancestral composition of the contemporary population living in the ethnic homelands of aboriginal populations in the New World.

<sup>38</sup>See section 5.1 for a presentation of the idea behind this instrumental variable approach.

<sup>39</sup>There does not seem to exist systematic survey data covering ethnicity and occupations outside Africa.

Table 14: Pre-colonial Economic Specialization and Contemporary Occupational Heterogeneity

	Contemporary Occupational Heterogeneity					
	Unweighted			Weighted		
	OLS		IV	OLS		IV
	(1)	(2)	(3)	(4)	(5)	(6)
Pre-modern Economic Specialization	1.01*** (0.36)	0.83** (0.37)	0.80** (0.31)	0.63** (0.30)	0.65** (0.29)	0.63** (0.25)
Main Controls	Yes	Yes	Yes	Yes	Yes	Yes
All Additional Controls	Yes	Yes	Yes	Yes	Yes	Yes
Regional FE	No	Yes	Yes	No	Yes	Yes
First-stage F-statistic			367.81			10643.43
Hansen's J-statistic			18.34			25.38
J-stat p-value			0.63			0.23
Adjusted- $R^2$	0.10	0.11	0.11	0.13	0.20	0.20
Observations	101	101	101	101	101	101

Notes: This table establishes the persistent positive statistically and economically significant effect of pre-modern economic specialization on contemporary occupational heterogeneity. These results account for the full set of geographical controls in Table 7 and regional fixed effects. Heteroskedasticity robust standard error estimates are reported in parentheses; \*\*\* denotes statistical significance at the 1% level, \*\* at the 5% level, and \* at the 10% level, all for two-sided hypothesis tests.

specialization on occupational heterogeneity of low- and high-skilled occupations.<sup>40</sup> It establishes a significant positive association between pre-modern economic specialization and occupational heterogeneity of both low- and high-skilled occupations (Columns 2 and 3, when high-skilled is defined as having primary school or more, and Columns 4 and 5, when high-skilled is defined to include high-school or more). Importantly though, it suggests that the effect of pre-modern economic specialization is larger on high-skilled occupations. In particular, the estimates imply that of the 0.83 additional contemporary occupations associated with an additional specialized activity in the pre-modern era (Column 1), 35% are low-skill (Column 2) while 65% are high-skill (Column 3). Thus, the results suggest that pre-modern economic specialization may potentially have a persistent skill-biased effect on contemporary occupational heterogeneity. Tables F.5 and F.6 provide additional suggestive evidence for the skill-biased nature of the effect. In particular, Table F.5 establishes that the increase in high-skilled occupations accounts for more than half of the effect of pre-modern economic specialization. Moreover, using Lewbel's IV strategy, it provides further evidence for the causal interpretation of the estimates. Additionally, Table F.6 shows that the share of low-skilled occupations is negatively associated with contemporary occupational heterogeneity, while the share of high-skilled occupations as well as the difference in the share of high- and low-skilled occupations are positively associated with

<sup>40</sup>Occupational heterogeneity of low-skilled occupations measures the number of distinct low-skilled economic occupations performed by members of an ethnicity. Similarly, for high-skilled occupations, which are those that employ a higher share of individuals with completed primary/secondary school or higher level of education attainment than the African average. It is important to note that in the African context only a small fraction of the population attains an educational level above primary schooling.

contemporary occupational heterogeneity.

Table 15: Pre-modern Economic Specialization and Contemporary Occupational Heterogeneity by Skill Level

	Contemporary Occupational Heterogeneity				
	All	Primary		Secondary	
		Low	High	Low	High
	(1)	(2)	(3)	(4)	(5)
Pre-modern Economic Specialization	0.83** (0.37)	0.29** (0.14)	0.54** (0.27)	0.35** (0.15)	0.48* (0.25)
Main Controls	Yes	Yes	Yes	Yes	Yes
All Additional Controls	Yes	Yes	Yes	Yes	Yes
Regional FE	Yes	Yes	Yes	Yes	Yes
Adjusted- $R^2$	0.11	0.16	0.10	0.18	0.10
Observations	101	101	101	101	101

Notes: This table establishes the persistent positive statistically and economically significant effect of pre-modern economic specialization on contemporary occupational heterogeneity by skill level. It suggests that pre-modern economic specialization has a skill-biased effect on contemporary occupational heterogeneity. High skill occupations are those which employ a higher share of individuals with completed primary/secondary school or higher level of education attainment than the African average. These results account for the full set of geographical controls in Table 7 and regional fixed effects. Heteroskedasticity robust standard error estimates are reported in parentheses; \*\*\* denotes statistical significance at the 1% level, \*\* at the 5% level, and \* at the 10% level, all for two-sided hypothesis tests.

One potential mechanism that could explain the persistence of occupational heterogeneity and its potential skill-bias is learning by doing. In particular, societies that had higher levels of pre-modern economic specialization might have accumulated a more diverse set of production-specific human capital. This would allow them to produce a larger set of goods and thus have a more complex economic system. In particular, if the production of one type of good requires experience in the production of a related good, production processes will generate spillovers across sectors and products (Hausmann et al., 2014; Hausmann and Hidalgo, 2011; Hidalgo et al., 2007). Thus, societies with higher levels of pre-modern economic specialization would potentially have higher levels of contemporary economic complexity and produce a more diverse set of products.

Table 16 explores this prediction using country-level data. In particular, for each country the analysis constructs a pre-modern economic specialization measure, based on the population weighted average of pre-modern economic specialization across ethnicities located in the country.<sup>41</sup> Columns 1-3 show that all three pre-modern economic specialization measures have an economically and statistically significant association with the Economic Complexity Index (Hausmann et al., 2014), which measures the level of productive diversification in the country. In particular, a high value of the Economic Complexity Index suggests that a country produces complex goods that few other countries produce. Similarly, Table 16 shows that countries with high levels of pre-modern economic specialization tend to export a larger number of goods (Columns 4-6), tend to export more goods than they import (Columns

<sup>41</sup>This procedure is commonly used in the literature (Gennaioli and Rainer, 2007; Alesina et al., 2013).

Table 16: Pre-modern Economic Specialization and Contemporary Economic Complexity

	Contemporary Development											
	Economic Complexity Index			# Goods Exported			Ratio # Goods Exported/Imported			Share of Global GDP		
	Number	Share	Score	Number	Share	Score	Number	Share	Score	Number	Share	Score
	(1)	(2)	(3)	(4)	(5)	(6)	(7)	(8)	(9)	(10)	(11)	(12)
Pre-modern Economic Specialization	0.19*** (0.07)	0.22*** (0.07)	0.17*** (0.06)	0.21*** (0.08)	0.31*** (0.10)	0.16* (0.09)	0.19** (0.08)	0.28*** (0.10)	0.14* (0.08)	0.22*** (0.06)	0.22*** (0.07)	0.16** (0.06)
Regional FE	Yes	Yes	Yes	Yes	Yes	Yes	Yes	Yes	Yes	Yes	Yes	Yes
Geographical Controls	Yes	Yes	Yes	Yes	Yes	Yes	Yes	Yes	Yes	Yes	Yes	Yes
Years Neolithic Transition	Yes	Yes	Yes	Yes	Yes	Yes	Yes	Yes	Yes	Yes	Yes	Yes
Adjusted- $R^2$	0.62	0.62	0.61	0.46	0.49	0.45	0.46	0.48	0.45	0.60	0.60	0.58
Observations	95	95	95	80	80	80	80	80	80	120	120	120

Notes: This table establishes the positive statistically and economically significant association between levels of pre-modern economic specialization and a country's contemporary economic complexity and the complexity of its production and export structure. Heteroskedasticity robust standard error estimates are reported in parentheses; \*\*\* denotes statistical significance at the 1% level, \*\* at the 5% level, and \* at the 10% level, all for two-sided hypothesis tests.

7-9), and have a larger share of global GDP (Columns 10-12).

## 6 Concluding Remarks

This research is the first attempt to identify the deep-rooted historical factors behind the economic specialization of labor, as well as its persistent effect on comparative economic development. It advances the hypothesis, and establishes empirically that population diversity had a positive causal effect on the division of labor, which translated into persistent differences in economic development. To empirically test these hypotheses, this research combines geocoded ethnographic, linguistic and genetic data to construct a novel dataset of measures of population diversity, economic specialization and development for pre-modern societies. In particular, for over 1100 ethnicities, the research constructs novel measures of economic specialization, based on the number of economic activities in which specialization existed in the pre-modern era. Additionally, it constructs various proxies of historical population diversity based on genetic and linguistic data at the ethnic level. This allows the analysis to explore the effects of intra-ethnic diversity (as opposed to country-level inter-ethnic diversity) on economic specialization.

The analysis provides support to the long-held believe in the central role of the division of labor in comparative development. Specifically, it establishes that pre-modern economic specialization was conducive to pre-modern statehood, urbanization and social hierarchy. Furthermore, it demonstrates that higher levels of pre-modern economic specialization are associated with greater skill-biased occupational heterogeneity, economic complexity and economic development in the contemporary era. The analysis suggests a novel channel through which societal characteristics shaped in the past may have a significant and persistent effect on comparative development today. Specifically, it suggests that the beneficial effect of the pre-modern division of labor may have persisted into the contemporary

era through its effect on the accumulation of production-specific skills. Finally, it provides supportive evidence for the view that economic specialization may have preceded and supported the emergence of states and complex social organizations.

## References

- Acemoglu, D., Johnson, S. and Robinson, J. (2005). Institutions as a fundamental cause of long-run growth, *Handbook of economic growth* **1**: 385–472.
- Ahlerup, P. and Olsson, O. (2012). The roots of ethnic diversity, *Journal of Economic Growth* **17**(2): 71–102.
- Alesina, A., Devleeschauwer, A., Easterly, W., Kurlat, S. and Wacziarg, R. T. (2003). Fractionalization, *Journal of Economic Growth* **8**(2): 155–194.
- Alesina, A., Giuliano, P. and Nunn, N. (2013). On the origins of gender roles: Women and the plough, *The Quarterly Journal of Economics* **128**(2): 469–530.
- Alesina, A., Harnoss, J. and Rapoport, H. (2016). Birthplace diversity and economic prosperity, *Journal of Economic Growth* **21**(2): 101–138.
- Altonji, J. G., Elder, T. E. and Taber, C. R. (2005). Selection on observed and unobserved variables: Assessing the effectiveness of catholic schools, *Journal of Political Economy* **113**(1): 151–184.
- Arbatli, E., Ashraf, Q. and Galor, O. (2013). The nature of civil conflict, *Working Paper, Brown University, Department of Economics* .
- Arellano, M. and Bond, S. (1991). Some tests of specification for panel data: Monte carlo evidence and an application to employment equations, *The review of economic studies* **58**(2): 277–297.
- Ashraf, Q. and Galor, O. (2011). Dynamics and stagnation in the malthusian epoch, *The American Economic Review* **101**(5): 2003–2041.
- Ashraf, Q. and Galor, O. (2013a). Genetic diversity and the origins of cultural fragmentation, *The American Economic Review* **103**(3): 528–533.
- Ashraf, Q. and Galor, O. (2013b). The out of africa hypothesis, human genetic diversity, and comparative economic development, *The American Economic Review* **103**(1): 1–46.
- Atkinson, Q. D. (2011). Phonemic diversity supports a serial founder effect model of language expansion from africa, *Science* **332**(6027): 346–349.
- Baker, A. J. and Jenkins, P. F. (1987). Founder effect and cultural evolution of songs in an isolated population of chaffinches, fringilla coelebs, in the chatham islands, *Animal Behaviour* **35**(6): 1793–1803.
- Basu, S. and Waymire, G. B. (2006). Recordkeeping and human evolution, *Accounting Horizons* **20**(3): 201–229.
- Bellows, J. and Miguel, E. (2009). War and local collective action in sierra leone, *Journal of Public Economics* **93**(11): 1144–1157.
- Berosus and Burstein, S. M. (1978). *The Babyloniaca of Berossus*, Vol. v. 1, fasc. 5 of *Sources from the ancient Near East*, 2nd print. with minor corrections edn, Undena Publications, Malibu.
- Betti, L., Balloux, F., Amos, W., Hanihara, T. and Manica, A. (2009). Distance from africa, not climate, explains within-population phenotypic diversity in humans, *Proceedings of the Royal Society of London B: Biological Sciences* **276**(1658): 809–814.
- Birchenall, J. A. (2014). Disease and diversity in africa’s long-term economic development, *Technical report*, University of California Santa Barbara.
- Bisson, M. S. (1982). Trade and tribute. archaeological evidence for the origin of states in south central africa (commerce et tribut. documents archéologiques sur l’origine des états du sud de l’afrique centrale), *Cahiers d’études africaines* pp. 343–361.

- Blundell, R. and Bond, S. (1998). Initial conditions and moment restrictions in dynamic panel data models, *Journal of econometrics* **87**(1): 115–143.
- Boix, C. (2015). *Political order and inequality: their foundations and their consequences for human welfare*, Cambridge studies in comparative politics, Cambridge University Press.
- Borland, J. and Yang, X. (1992). Specialization and a new approach to economic organization and growth, *The American Economic Review* **82**(2): 386–391.
- Brumfiel, E. M. and Earle, T. K. (1987). *Specialization, exchange, and complex societies*, Cambridge University Press, Cambridge.
- Cann, R. L., Stoneking, M. and Wilson, A. C. (1987). Mitochondrial dna and human evolution, *Nature* **325**(6099): 31–36.
- Childe, V. G. and Wailes, B. (1996). *Craft specialization and social evolution: in memory of V. Gordon Childe*, Vol. 93, University of Pennsylvania Museum of Archaeology and Anthropology, Philadelphia.
- Claessen, H. J. M. and Skalník, P. (1978). *The Early state*, Mouton, The Hague.
- Conley, T. (1999). Gmm estimation with cross sectional dependence, *Journal of Econometrics* **92**(1): 1–45.
- Cook, C. J. (2015). The natural selection of infectious disease resistance and its effect on contemporary health, *Review of Economics and Statistics* **97**(4): 742–757.
- Creanza, N., Ruhlen, M., Pemberton, T. J., Rosenberg, N. A., Feldman, M. W. and Ramachandran, S. (2015). A comparison of worldwide phonemic and genetic variation in human populations, *Proceedings of the National Academy of Sciences* **112**(5): 1265–1272.
- Dean, J. S., Euler, R. C., Gumerman, G. J., Plog, F., Hevly, R. H. and Karlstrom, T. N. (1985). Human behavior, demography, and paleoenvironment on the colorado plateaus, *American Antiquity* pp. 537–554.
- Depetris-Chauvin, E. (2014). State history and contemporary conflict: Evidence from sub-saharan africa, *Technical report*, Brown University.
- Desmet, K., Ortuño-Ortín, I. and Wacziarg, R. (2012). The political economy of linguistic cleavages, *Journal of development Economics* **97**(2): 322–338.
- Desmet, K., Ortuño-Ortín, I. and Wacziarg, R. (2015). Culture, ethnicity and diversity, *Technical report*, National Bureau of Economic Research.
- Diamond, J. M. (1997). *Guns, germs, and steel: the fates of human societies*, 1st ed edn, W.W. Norton & Co., New York.
- Díaz del Castillo, B. (1796). *Historia verdadera de la conquista de la Nueva España*, Imprenta de Don Benito Cano, Madrid.
- Dryer, Matthew S & Haspelmath, M. e. (2013). *The World Atlas of of Language Structures Online.*, Leipzig: Max Planck Institute for Evolutionary Anthropology.
- Durkheim, É. (1893). *De la division du travail social*, 2. éd edn, F. Alcan, Paris.
- Easterly, W. and Levine, R. (1997). Africa’s growth tragedy: policies and ethnic divisions, *The Quarterly Journal of Economics* pp. 1203–1250.
- Fenske, J. (2014). Ecology, trade, and states in pre-colonial africa, *Journal of the European Economic Association* **12**(3): 612–640.
- Freeman, D. and Pankhurst, A. (2003). *Peripheral people: the excluded minorities of Ethiopia*, Red Sea Press, Lawrenceville, NJ.
- Friedlaender, J. S., Friedlaender, F. R., Reed, F. A., Kidd, K. K., Kidd, J. R., Chambers, G. K., Lea, R. A., Loo, J.-H., Koki, G., Hodgson, J. A. et al. (2008). The genetic structure of pacific islanders, *PLoS Genet* **4**(1): e19.
- Galor, O. and Özak, Ö. (2015). Land productivity and economic development: Caloric suitability vs. agricultural suitability, *SMU Working Paper Series* .
- Galor, O. and Özak, Ö. (2016). The agricultural origins of time preference, *American Economic Review* **106**(10).

- Galor, O., Özak, Ö. and Sarid, A. (2016). Geographical origins and economic consequences of language structures, *SMU Working Paper Series* .
- Gennaioli, N. and Rainer, I. (2007). The modern impact of precolonial centralization in africa, *Journal of Economic Growth* **12**(3): 185–234.
- Giuliano, P. and Nunn, N. (2013). The transmission of democracy: from the village to the nation-state, *The American Economic Review* **103**(3): 86–92.
- Giuliano, P. and Nunn, N. (2016). Understanding cultural persistence and change.
- Glaeser, E. L., La Porta, R., Lopez-de Silanes, F. and Shleifer, A. (2004). Do institutions cause growth?, *Journal of economic Growth* **9**(3): 271–303.
- Hallpike, C. R. (1968). The status of craftsmen among the konso of south-west ethiopia, *Africa* **38**(03): 258–269.
- Hallpike, C. R. (2008). *The Konso of Ethiopia: a study of the values of a Cushitic people*, AuthorHouse, Central Milton Keynes.
- Hamilton, M. J. and Buchanan, B. (2009). The accumulation of stochastic copying errors causes drift in culturally transmitted technologies: quantifying clovis evolutionary dynamics, *Journal of Anthropological Archaeology* **28**(1): 55–69.
- Hausmann, R. and Hidalgo, C. A. (2011). The network structure of economic output, *Journal of Economic Growth* **16**(4): 309–342.
- Hausmann, R., Hidalgo, C. A., Bustos, S., Coscia, M., Simoes, A. and Yildirim, M. A. (2014). *The atlas of economic complexity: Mapping paths to prosperity*, Mit Press.
- Henderson, J. V., Storeygard, A. and Weil, D. N. (2012). Measuring economic growth from outer space, *The American Economic Review* **102**(2): 994–1028.
- Hidalgo, C. A., Klinger, B., Barabási, A.-L. and Hausmann, R. (2007). The product space conditions the development of nations, *Science* **317**(5837): 482–487.
- Hill, K. and Hurtado, A. M. (1996). *Aché life history: the ecology and demography of a foraging people*, Aldine de Gruyter, New York.
- Hinton, P. (1979). The karen, millennialism, and the politics of accommodation to lowland states, in C. F. Keyes (ed.), *Ethnic Adaptation and Identity: The Karen on the Thai Frontier with Burma*, Institute for the Study of Human Issues, pp. 81–98.
- Houthakker, H. S. (1956). Economics and biology: specialization and speciation, *Kyklos* **9**(2): 181–189.
- Kimura, M. (1983). *The neutral theory of molecular evolution*, Cambridge University Press, Cambridge.
- Kiszewski, A., Mellinger, A., Spielman, A., Malaney, P., Sachs, S. E. and Sachs, J. (2004). A global index representing the stability of malaria transmission, *The American Journal of Tropical Medicine and Hygiene* **70**(5): 486–498.
- Kiyotaki, N. and Wright, R. (1989). On money as a medium of exchange, *The Journal of Political Economy* pp. 927–954.
- Lao, O., Lu, T. T., Nothnagel, M., Junge, O., Freitag-Wolf, S., Caliebe, A., Balascakova, M., Bertranpetit, J., Bindoff, L. A., Comas, D. et al. (2008). Correlation between genetic and geographic structure in europe, *Current Biology* **18**(16): 1241–1248.
- Lewbel, A. (2012). Using heteroscedasticity to identify and estimate mismeasured and endogenous regressor models, *Journal of Business & Economic Statistics* **30**(1): 67–80.
- Loomis, W. T. (1998). *Wages, welfare costs, and inflation in classical Athens*, The University of Michigan Press, Ann Arbor.
- Lycett, S. J. (2008). Acheulean variation and selection: does handaxe symmetry fit neutral expectations?, *Journal of Archaeological Science* **35**(9): 2640–2648.
- Lycett, S. J. and von Cramon-Taubadel, N. (2008). Acheulean variability and hominin dispersals: a model-bound approach, *Journal of Archaeological Science* **35**(3): 553–562.
- Manica, A., Amos, W., Balloux, F. and Hanihara, T. (2007). The effect of ancient population bottlenecks on human phenotypic variation, *Nature* **448**(7151): 346–348.



- Michalopoulos, S. (2012). The origins of ethnolinguistic diversity, *The American Economic Review* **102**(4): 1508.
- Michalopoulos, S. and Papaioannou, E. (2013). Pre-colonial ethnic institutions and contemporary african development, *Econometrica* **81**(1): 113–152.
- Moore, J. L., Manne, L., Brooks, T., Burgess, N. D., Davies, R., Rahbek, C., Williams, P. and Balmford, A. (2002). The distribution of cultural and biological diversity in africa, *Proceedings of the Royal Society of London B: Biological Sciences* **269**(1501): 1645–1653.
- Murdock, G. P. (1967). Ethnographic atlas: a summary, *Ethnology* pp. 109–236.
- Murdock, G. P. and White, D. R. (1969). Standard cross-cultural sample, *Ethnology* pp. 329–369.
- Murphy, K. M. and Topel, R. H. (2002). Estimation and inference in two-step econometric models, *Journal of Business & Economic Statistics* **20**(1): 88–97.
- Myres, N. M., Rootsi, S., Lin, A. A., Järve, M., King, R. J., Kutuev, I., Cabrera, V. M., Khusnutdinova, E. K., Pshenichnov, A., Yunusbayev, B. et al. (2011). A major y-chromosome haplogroup r1b holocene era founder effect in central and western europe, *European Journal of Human Genetics* **19**(1): 95–101.
- Nettle, D. (1998). Explaining global patterns of language diversity, *Journal of anthropological archaeology* **17**(4): 354–374.
- Nissen, H. J., Damerow, P. and Englund, R. K. (1993). *Archaic bookkeeping: early writing and techniques of economic administration in the ancient Near East*, University of Chicago Press, Chicago, Ill.
- Nolan, P. and Lenski, G. E. (2011). *Human societies: an introduction to macrosociology*, 11th ed edn, Paradigm Publishers, Boulder.
- Nunn, N. (2008). The long-term effects of africa’s slave trades, *The Quarterly Journal of Economics* **123**(1): 139–176.
- Nunn, N. and Puga, D. (2012). Ruggedness: The blessing of bad geography in africa, *Review of Economics and Statistics* **94**(1): 20–36.
- Olson, D. M., Dinerstein, E., Wikramanayake, E. D., Burgess, N. D., Powell, G. V., Underwood, E. C., D’amico, J. A., Itoua, I., Strand, H. E., Morrison, J. C. et al. (2001). Terrestrial ecoregions of the world: A new map of life on earth a new global map of terrestrial ecoregions provides an innovative tool for conserving biodiversity, *BioScience* **51**(11): 933–938.
- Oster, E. (2014). Unobservable selection and coefficient stability: Theory and validation.
- Özak, Ö. (2010). The voyage of homo-economicus: Some economic measures of distance.
- Özak, Ö. (2012). Distance to the technological frontier and economic development, *Southern Methodist University Working Paper Series* .
- Pemberton, T. J., DeGiorgio, M. and Rosenberg, N. A. (2013). Population structure in a comprehensive genomic data set on human microsatellite variation, *G3: Genes/ Genomes/ Genetics* **3**(5): 891–907.
- Perrin, M. (1996). *Guajiro*, The Gale Group, Inc.
- Pinhasi, R., Thomas, M. G., Hofreiter, M., Currat, M. and Burger, J. (2012). The genetic history of europeans, *Trends in Genetics* **28**(10): 496–505.
- Polanyi, K. (2001). *The great transformation: the political and economic origins of our time*, 2nd beacon paperback ed edn, Beacon Press, Boston, MA.
- Prem, H. J. and Carrasco Pizana, P. (1974). *Matrícula de Huexotzinco: ms. mex. 387 der Bibliothèque Nationale Paris : Edition, Kommentar, Hieroglyphenglossar*, Akademische Druck- u. Verlagsanstalt, Graz, Austria.
- Putterman, L. and Weil, D. N. (2010). Post-1500 population flows and the long run determinants of economic growth and inequality, *The quarterly journal of economics* **125**(4): 1627.
- Ramachandran, S., Deshpande, O., Roseman, C. C., Rosenberg, N. A., Feldman, M. W. and Cavalli-Sforza, L. L. (2005). Support from the relationship of genetic and geographic distance in human

- populations for a serial founder effect originating in africa, *Proceedings of the National Academy of Sciences of the United States of America* **102**(44): 15942–15947.
- Reid, R. J. (2002). *Political power in pre-colonial Buganda: economy, society & welfare in the nineteenth century*, James Currey, Oxford.
- Roberts, K. (2011). *The origins of business, money, and markets*, Columbia Business School Pub., New York.
- Rogers, D. S., Feldman, M. W. and Ehrlich, P. R. (2009). Inferring population histories using cultural data, *Proceedings of the Royal Society of London B: Biological Sciences* **276**(1674): 3835–3843.
- Romer, P. M. (1987). Growth based on increasing returns due to specialization, *The American Economic Review* **77**(2): 56–62.
- Schmandt-Besserat, D. and Schmandt-Besserat, D. (1996). *How writing came about*, 1st abridged ed edn, University of Texas Press, Austin.
- Smith, A. (1776). *An Inquiry into the Nature and Causes of the Wealth of Nations*, Whitestone, Dublin.
- Spolaore, E. and Wacziarg, R. (2013). How deep are the roots of economic development?, *Journal of Economic Literature* **51**(2): 325–69.
- Stigler, G. J. (1951). The division of labor is limited by the extent of the market, *The Journal of Political Economy* pp. 185–193.
- Sun, G.-Z. (2012). *The division of labour in economics: a history*, Vol. 142 of *Routledge studies in the history of economics*, Routledge, London.
- Trigger, B. G. (1983). The rise of egyptian civilization, in B. G. Trigger, B. J. Kemp, D. O’Connor and A. B. Lloyd (eds), *Ancient Egypt: a social history*, Cambridge University Press Cambridge, pp. 1–70.
- Wang, S., Lewis Jr, C. M., Jakobsson, M., Ramachandran, S., Ray, N., Bedoya, G., Rojas, W., Parra, M. V., Molina, J. A., Gallo, C. et al. (2007). Genetic variation and population structure in native americans, *PLoS Genet* **3**(11): e185.
- Yang, X. and Borland, J. (1991). A microeconomic mechanism for economic growth, *Journal of political economy* pp. 460–482.
- Yang, X. and Sachs, J. D. (2008). *Economic development and the division of labor*, John Wiley & Sons.

## Online Appendix (Not for publication)

### Additional Results and Supporting Material

#### A Summary Statistics

Table A.1: Summary Statistics on Base Sample

	Mean	Std	Min	Max	N
Economic Specialization	1.34	(1.41)	0.00	7.00	116
Economic Specialization (Share)	0.20	(0.19)	0.00	0.80	116
Economic Specialization (Dev)	9.02	(3.96)	2.00	25.00	116
Population Diversity	0.70	(0.05)	0.47	0.76	116
Absolute Latitude	15.95	(15.22)	0.04	68.67	116
Area	0.18	(0.85)	0.00	8.97	116
Elevation (Avg.)	823.71	(727.51)	27.79	3581.35	116
Precipitation (Avg.)	91.00	(57.54)	11.77	334.73	116
Temperature (Avg.)	20.69	(8.43)	-13.44	28.27	116
Malaria Ecology	7.88	(9.07)	0.00	29.36	116
Ecological Diversity	0.26	(0.22)	0.00	0.67	116
Agricultural Suitability (avg.)	0.76	(0.33)	0.00	1.00	116
Agricultural Suitability (std.)	0.08	(0.11)	0.00	0.45	116
Caloric Suitability Index (Pre-1500CE)	2699.11	(1040.20)	0.00	5030.97	116
Caloric Suitability (Pre-1500 ,std.)	418.27	(360.47)	0.00	1520.41	116
Temperature (Spatial Corr., Avg.)	0.93	(0.17)	0.00	1.00	116
Temperature (Volatility, Avg)	0.84	(0.48)	0.27	2.87	116
Pct. Area within 100 kms of Sea	0.19	(0.33)	0.00	1.00	116
Coast Length	0.49	(2.16)	0.00	19.65	116
Ruggedness (Avg.)	110.62	(149.48)	1.27	1076.01	116
Pre-Industrial Mobility (avg.)	0.27	(0.06)	0.07	0.37	116
Pre-Industrial Mobility (std.)	0.05	(0.04)	0.01	0.25	116

Table A.2: Summary Statistics on Full Sample

	Mean	Std	Min	Max	N
Economic Specialization	0.85	(1.20)	0.00	7.00	934
Economic Specialization (Share)	0.13	(0.17)	0.00	1.00	934
Economic Specialization (Dev)	7.74	(3.59)	1.00	25.00	934
Predicted Population Diversity	0.68	(0.05)	0.54	0.76	934
Absolute Latitude	20.77	(16.59)	0.02	71.22	934
Area	0.07	(0.37)	0.00	8.97	934
Elevation (Avg.)	755.14	(676.82)	1.06	4417.96	934
Precipitation (Avg.)	105.83	(71.13)	0.00	499.24	934
Temperature (Avg.)	19.09	(8.60)	-15.31	29.58	934
Malaria Ecology	5.58	(8.05)	0.00	33.95	934
Ecological Diversity	0.19	(0.21)	0.00	0.82	934
Agricultural Suitability (avg.)	0.76	(0.34)	0.00	1.00	934
Agricultural Suitability (std.)	0.07	(0.10)	0.00	0.47	934
Caloric Suitability Index (Pre-1500CE)	2673.34	(1282.61)	0.00	6955.56	934
Caloric Suitability (Pre-1500 ,std.)	362.60	(333.18)	0.00	2436.89	934
Temperature (Spatial Corr., Avg.)	0.86	(0.28)	0.00	1.00	934
Temperature (Volatility, Avg)	0.98	(0.57)	0.00	3.08	934
Pct. Area within 100 kms of Sea	0.30	(0.41)	0.00	1.00	934
Coast Length	0.34	(2.97)	0.00	81.92	934
Ruggedness (Avg.)	137.45	(160.05)	0.05	1137.67	934
Pre-Industrial Mobility (avg.)	0.27	(0.07)	0.06	0.47	934
Pre-Industrial Mobility (std.)	0.06	(0.05)	0.00	0.27	934

## B Relation between Economic Specialization and Other Trade Related Measures

Table B.1: Correlation of Economic Specialization and Trade Measures

		Economic Specialization and Trade Measures									
		Economic Specialization	Economic Specialization (Share)	Economic Specialization (Dev)	Importance of Trade	Intercommunity Trade as Food Source	Money	Credit Source	Writing and Records	and Technological Specialization	Complexity
Pre-modern Economic Specialization	Eco-	1.00									
Pre-modern Economic Specialization (Share)	Eco-	0.94***	1.00								
Pre-modern Economic Specialization (Dev)	Eco-	0.87***	0.74***	1.00							
Importance of Trade		0.20***	0.19**	0.13*	1.00						
Intercommunity Trade as Food Source		0.32***	0.32***	0.25***	0.77***	1.00					
Money		0.35***	0.38***	0.30***	0.29***	0.43***	1.00				
Credit Source		0.25***	0.21***	0.26***	0.28***	0.31***	0.35***	1.00			
Writing and Records		0.55***	0.55***	0.47***	0.24***	0.31***	0.38***	0.38***	1.00		
Technological Specialization	Spe-	0.60***	0.58***	0.67***	0.18**	0.28***	0.37***	0.26***	0.49***	1.00	
Complexity		0.61***	0.59***	0.63***	0.27***	0.36***	0.55***	0.39***	0.70***	0.73***	1.00

Notes: This Table shows the pairwise correlation between different measures of trade; \*\*\* denotes statistical significance at the 1% level, \*\* at the 5% level, and \* at the 10% level, all for two-sided hypothesis tests.

Table B.2: Pre-modern Economic Specialization and Other Trade Related Outcomes

	Pre-Industrial Measures of Trade				
	Importance of Trade	Intercommunity Trade as Food Source	Money	Credit	Writing and Records
	(1)	(2)	(3)	(4)	(5)
Pre-modern Economic Specialization	0.16* (0.09)	0.22*** (0.07)	0.22** (0.09)	0.49*** (0.08)	0.51*** (0.07)
Main Controls	Yes	Yes	Yes	Yes	Yes
All Additional Controls	Yes	Yes	Yes	Yes	Yes
Adjusted- $R^2$	0.07	0.22	0.19	0.29	0.49
Observations	177	174	174	162	177

Notes: This Table establishes the positive economically and statistically positive association between pre-modern economic specialization and other pre-modern trade related outcomes at the ethnic level. Standardized coefficients. Heteroskedasticity robust standard error estimates are reported in parentheses; \*\*\* denotes statistical significance at the 1% level, \*\* at the 5% level, and \* at the 10% level, all for two-sided hypothesis tests.

Table B.3: Pre-modern Economic Specialization (Share) and Other Trade Related Outcomes

	Pre-Industrial Measures of Trade				
	Importance of Trade	Intercommunity Trade as Food Source	Money	Credit	Writing and Records
	(1)	(2)	(3)	(4)	(5)
Pre-Modern Economic Specialization (Share)	0.15* (0.09)	0.24*** (0.07)	0.28*** (0.08)	0.49*** (0.08)	0.54*** (0.07)
Main Controls	Yes	Yes	Yes	Yes	Yes
All Additional Controls	Yes	Yes	Yes	Yes	Yes
Adjusted- $R^2$	0.07	0.23	0.21	0.28	0.51
Observations	177	174	174	162	177

Notes: This Table establishes the positive economically and statistically positive association between pre-modern economic specialization and other pre-modern trade related outcomes at the ethnic level. Standardized coefficients. Heteroskedasticity robust standard error estimates are reported in parentheses; \*\*\* denotes statistical significance at the 1% level, \*\* at the 5% level, and \* at the 10% level, all for two-sided hypothesis tests.

Table B.4: Pre-modern Economic Specialization (Dev) and Other Trade Related Outcomes

	Pre-Industrial Measures of Trade				
	Importance of Trade	Intercommunity Trade as Food Source	Money	Credit	Writing and Records
	(1)	(2)	(3)	(4)	(5)
Pre-Modern Economic Specialization (Dev)	0.06 (0.09)	0.15* (0.08)	0.17** (0.09)	0.38*** (0.07)	0.38*** (0.06)
Main Controls	Yes	Yes	Yes	Yes	Yes
All Additional Controls	Yes	Yes	Yes	Yes	Yes
Adjusted- $R^2$	0.06	0.20	0.18	0.25	0.43
Observations	177	174	174	162	177

Notes: This Table establishes the positive economically and statistically positive association between pre-modern economic specialization and other pre-modern trade related outcomes at the ethnic level. Standardized coefficients. Heteroskedasticity robust standard error estimates are reported in parentheses; \*\*\* denotes statistical significance at the 1% level, \*\* at the 5% level, and \* at the 10% level, all for two-sided hypothesis tests.



# C Robustness

## C.1 Robustness to Continental Fixed Effects

Table C.1: Predicted Population Diversity and Economic Specialization  
(Robustness to Continental Fixed Effects)

	Economic Specialization									
	(1)	(2)	(3)	(4)	(5)	(6)	(7)	(8)	(9)	(10)
Predicted Population Diversity	0.73*** (0.15)	0.57*** (0.15)	0.58*** (0.15)	0.51*** (0.15)	0.51*** (0.16)	0.53*** (0.16)	0.59*** (0.15)	0.55*** (0.15)	0.57*** (0.15)	0.58*** (0.17)
Malaria Ecology			-0.13*** (0.05)							-0.09* (0.05)
Ecological Diversity				0.12*** (0.03)						0.09*** (0.03)
Agricultural Suitability (avg.)					-0.07* (0.04)					-0.16*** (0.04)
Agricultural Suitability (std.)					0.04 (0.05)					0.01 (0.05)
Caloric Suitability Index (Pre-1500CE)						0.06* (0.03)				0.11*** (0.03)
Caloric Suitability (Pre-1500 ,std.)						0.08* (0.04)				0.07 (0.05)
Temperature (Spatial Corr., Avg.)							0.01 (0.03)			0.03 (0.04)
Temperature (Volatility, Avg)							-0.25*** (0.06)			-0.14* (0.08)
Pct. Area within 100kms of Sea Coast Length								0.05 (0.03)		-0.02 (0.04)
Ruggedness (Avg.)									0.01 (0.03)	0.01 (0.03)
Pre-Industrial Mobility (avg.)									0.10 (0.06)	0.08 (0.07)
Pre-Industrial Mobility (std.)									0.15 (0.10)	0.28** (0.11)
Continental FE	Yes	Yes	Yes	Yes	Yes	Yes	Yes	Yes	Yes	Yes
Main Controls	No	Yes	Yes	Yes	Yes	Yes	Yes	Yes	Yes	Yes
Adjusted- $R^2$	0.26	0.29	0.29	0.30	0.29	0.29	0.29	0.29	0.29	0.32
Observations	934	934	934	934	934	934	934	934	934	934

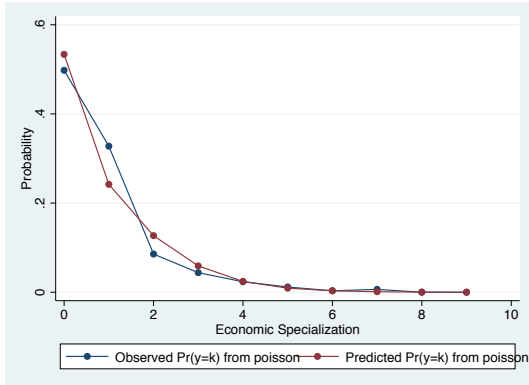
Notes: Standardized coefficients. Heteroskedasticity robust standard error estimates are reported in parentheses; \*\*\* denotes statistical significance at the 1% level, \*\* at the 5% level, and \* at the 10% level, all for two-sided hypothesis tests.

## C.2 Robustness to Empirical Specification

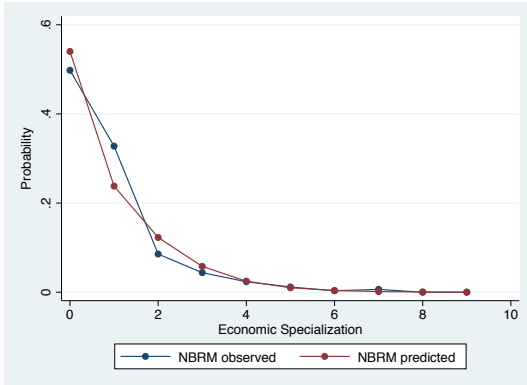
Table C.2: Predicted Population Diversity and Economic Specialization  
Robustness to Estimation Method

	Economic Specialization			
	Poisson	Negative Binomial	Zero-inflated Poisson	Zero-inflated Negative Binomial
	(1)	(2)	(3)	(4)
Panel A: Economic Specialization				
Predicted Population Diversity	0.59*** (0.22)	0.59*** (0.23)	0.62*** (0.22)	0.62*** (0.23)
Panel B: Probability Economic Specialization is always equal to Zero				
Predicted Population Diversity			-10.54** (4.72)	-10.69** (4.91)
Continental FE	Yes	Yes	Yes	Yes
Main Controls	Yes	Yes	Yes	Yes
Additional Controls	Yes	Yes	Yes	Yes
Pseudo- $R^2$	0.25	0.21		
Observations	934	934	934	934
$\alpha$		0.05		0.04
Log-likelihood	-932.93	-932.07	-911.76	-911.08
BIC	2043.70	2048.81	2049.23	2054.70
AIC	1917.87	1918.14	1889.53	1890.16

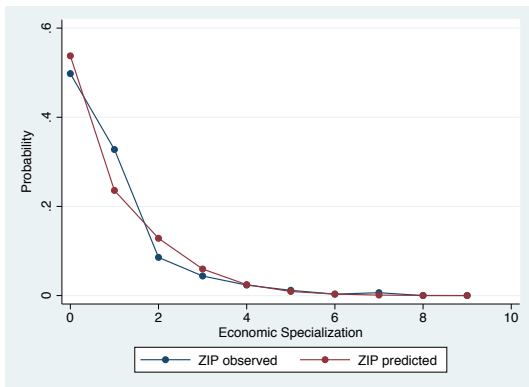
Notes: This Table establishes the robustness of the results to estimation method. In particular, the results employ estimation method better suited for count variables. Column 1 shows the results of a Poisson regression, column 2 of a Negative-Binomial, and columns 3 and 4 the results of zero-inflated Poisson and Negative Binomial regressions respectively. Panel A establishes the positive effect of predicted population on economic specialization (conditional on having economic specialization). Additionally, Panel B establishes the negative effect of population diversity on the probability of not having any economic specialization. Coefficients show effect of increasing predicted population diversity by 1 standard deviation. Heteroskedasticity robust standard error estimates are reported in parentheses; \*\*\* denotes statistical significance at the 1% level, \*\* at the 5% level, and \* at the 10% level, all for two-sided hypothesis tests.



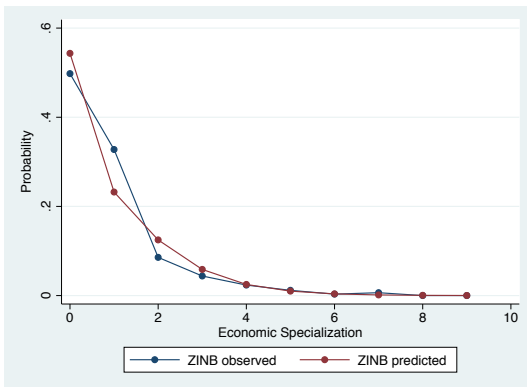
(a) Poisson



(b) Negative Binomial



(c) Zero-Inflated Poisson



(d) Zero-Inflated Negative Binomial

Figure C.1: Robustness to Estimation Method  
Observed and Predicted Probabilities in Count Regressions

Table C.3: Predicted Population Diversity and Economic Specialization  
Robustness to Estimation Method (Shares)

	Economic Specialization (Share)		
	Fractional Regression		Zero-inflated Beta
	Logit	Probit	
	(1)	(2)	(3)
Panel A: Economic Specialization			
Predicted Population Diversity	0.88*** (0.28)	0.49*** (0.15)	0.42* (0.22)
Std- $\beta$	0.09*** (0.03)	0.09*** (0.03)	0.11*** (0.02)
Panel B: Probability Economic Specialization is always equal to Zero			
Predicted Population Diversity			-1.85*** (0.19)
Continental FE	Yes	Yes	Yes
Main Controls	Yes	Yes	Yes
Additonal Controls	Yes	Yes	Yes
Observations	934	934	934
Log-likelihood	-303.26	-303.19	-68.34
BIC	784.36	784.20	369.22
AIC	658.53	658.37	204.68

Notes: Heteroskedasticity robust standard error estimates are reported in parentheses; \*\*\* denotes statistical significance at the 1% level, \*\* at the 5% level, and \* at the 10% level, all for two-sided hypothesis tests.

### C.3 Robustness to Clustering and Spatial-Autocorrelation

Table C.4: Expected Heterozygosity and Economic Specialization

	Economic Specialization						
	(1)	(2)	(3)	(4)	(5)	(6)	(7)
Expected Heterozygosity	0.27*** (0.05)	0.31*** (0.09)	0.27*** (0.09)	0.27*** (0.09)	0.25** (0.10)	0.27*** (0.09)	0.36** (0.14)
Absolute Latitude		0.15 (0.13)					0.80 (0.47)
Area			0.01 (0.05)				0.01 (0.06)
Elevation (Avg.)				-0.03 (0.07)			0.31* (0.17)
Precipitation (Avg.)					-0.08 (0.07)		0.13 (0.21)
Temperature (Avg.)						0.04 (0.08)	0.73* (0.37)
Adjusted- $R^2$	0.07	0.08	0.06	0.06	0.06	0.06	0.15
Observations	116	116	116	116	116	116	116

Notes: Standardized coefficients. Heteroskedasticity robust standard error estimates clustered at the language phylum level are reported in parentheses; \*\*\* denotes statistical significance at the 1% level, \*\* at the 5% level, and \* at the 10% level, all for two-sided hypothesis tests.

Table C.5: Population Diversity and Economic Specialization  
(Robustness to Clustering and Spatial Auto-Correlation)

	Economic Specialization								
	(1)	(2)	(3)	(4)	(5)	(6)	(7)	(8)	(9)
Population Diversity	0.36*** (0.09) [0.14] [0.11] {0.10}	0.41*** (0.10) [0.14] [0.10] {0.10}	0.36*** (0.10) [0.15] [0.11] {0.09}	0.37*** (0.09) [0.13] [0.10] {0.10}	0.34*** (0.11) [0.16] [0.12] {0.10}	0.33*** (0.10) [0.15] [0.11] {0.10}	0.31*** (0.09) [0.13] [0.10] {0.10}	0.40*** (0.11) [0.16] [0.12] {0.10}	0.31*** (0.10) [0.12] [0.09] {0.09}
Main Controls	Yes	Yes	Yes	Yes	Yes	Yes	Yes	Yes	Yes
Additional Controls	No	Yes	Yes	Yes	Yes	Yes	Yes	Yes	Yes
Adjusted- $R^2$	0.15	0.22	0.21	0.17	0.18	0.18	0.20	0.17	0.40
Observations	116	116	116	116	116	116	116	116	116

Notes: This Table establishes the robustness of the OLS results to clustering by language phylum and spatial auto-correlation. The additional controls in each column are the ones of the same column in Table 2. Standardized coefficients. Heteroskedasticity robust standard error estimates are reported in parentheses, clustered at the language phylum in parenthesis and squared brackets, spatial auto-correlation corrected standard errors (Conley, 1999) in squared brackets and Cliff-Ord ML in curly brackets. \*\*\* denotes statistical significance at the 1% level, \*\* at the 5% level, and \* at the 10% level, all for two-sided hypothesis tests.

Table C.6: Population Diversity and Distance to Addis-Ababa  
(Robustness to Clustering and Spatial Auto-Correlation)

	Population Diversity								
	Full Sample								Specialization
	(1)	(2)	(3)	(4)	(5)	(6)	(7)	(8)	(9)
Pre-Industrial Distance to Addis Ababa	-0.85*** (0.07) ([0.09]) [0.08] {0.04}	-0.80*** (0.10) ([0.12]) [0.10] {0.05}	-0.80*** (0.09) ([0.11]) [0.10] {0.05}	-0.81*** (0.09) ([0.11]) [0.09] {0.05}	-0.80*** (0.10) ([0.13]) [0.11] {0.06}	-0.79*** (0.10) ([0.12]) [0.11] {0.06}	-0.80*** (0.10) ([0.12]) [0.10] {0.06}	-0.82*** (0.09) ([0.10]) [0.08] {0.06}	-0.85*** (0.09) ([0.10]) [0.08] {0.10}
Main Controls	No	Yes	Yes	Yes	Yes	Yes	Yes	Yes	Yes
Additional Controls	No	No	Yes	Yes	Yes	Yes	Yes	Yes	Yes
Adjusted- $R^2$	0.72	0.72	0.74	0.72	0.72	0.72	0.73	0.75	0.73
$R^2$	0.72	0.74	0.75	0.74	0.74	0.74	0.75	0.78	0.76
Observations	144	144	144	144	144	144	144	144	116

Notes: This Table establishes the robustness of the negative effect of the migratory distance on population diversity to clustering by language phylum and spatial auto-correlation. The additional controls in each column are the ones of the same column in Table 3. Standardized coefficients. Heteroskedasticity robust standard error estimates are reported in parentheses, clustered at the language phylum in parenthesis and squared brackets, spatial auto-correlation corrected standard errors (Conley, 1999) in squared brackets and Cliff-Ord ML in curly brackets. \*\*\* denotes statistical significance at the 1% level, \*\* at the 5% level, and \* at the 10% level, all for two-sided hypothesis tests.

Table C.7: Population Diversity and Economic Specialization (Reduced Form)  
(Robustness to Clustering and Spatial Auto-Correlation)

	Economic Specialization								
	(1)	(2)	(3)	(4)	(5)	(6)	(7)	(8)	(9)
	Pre-Industrial Distance to Addis Ababa	-0.41*** (0.10) ([0.12]) [0.09] {0.10}	-0.43*** (0.10) ([0.13]) [0.10] {0.10}	-0.44*** (0.10) ([0.12]) [0.10] {0.10}	-0.45*** (0.09) ([0.11]) [0.09] {0.10}	-0.37*** (0.12) ([0.15]) [0.11] {0.11}	-0.40*** (0.10) ([0.13]) [0.10] {0.10}	-0.36*** (0.09) ([0.11]) [0.09] {0.10}	-0.46*** (0.11) ([0.15]) [0.10] {0.10}
Main Controls	Yes	Yes	Yes	Yes	Yes	Yes	Yes	Yes	Yes
Additional Controls	No	Yes	Yes	Yes	Yes	Yes	Yes	Yes	Yes
Adjusted- $R^2$	0.17	0.23	0.25	0.21	0.19	0.21	0.22	0.19	0.42
Observations	116	116	116	116	116	116	116	116	116

Notes: This Table establishes the robustness of the OLS results to clustering by language phylum and spatial auto-correlation. The additional controls in each column are the ones of the same column in Table D.1. Standardized coefficients. Heteroskedasticity robust standard error estimates are reported in parentheses, clustered at the language phylum in parenthesis and squared brackets, spatial auto-correlation corrected standard errors (Conley, 1999) in squared brackets and Cliff-Ord ML in curly brackets. \*\*\* denotes statistical significance at the 1% level, \*\* at the 5% level, and \* at the 10% level, all for two-sided hypothesis tests.

Table C.8: Population Diversity and Economic Specialization (Reduced Form)  
(Robustness to Clustering and Spatial Auto-Correlation)

	Economic Specialization										
	(1)	(2)	(3)	(4)	(5)	(6)	(7)	(8)	(9)	(10)	(11)
Pre-Industrial	-0.45***	-0.42***	-0.45***	-0.42***	-0.41***	-0.45***	-0.40***	-0.42***	-0.42***	-0.47***	-0.36***
Distance to	(0.03)	(0.03)	(0.03)	(0.03)	(0.03)	(0.03)	(0.03)	(0.03)	(0.03)	(0.04)	(0.10)
Addis Ababa	([0.08])	([0.08])	([0.09])	([0.07])	([0.07])	([0.09])	([0.07])	([0.08])	([0.08])	([0.09])	([0.20])
	[0.07]	[0.06]	[0.06]	[0.06]	[0.06]	[0.07]	[0.06]	[0.06]	[0.06]	[0.06]	[0.18]
	{0.03}	{0.03}	{0.03}	{0.03}	{0.03}	{0.03}	{0.03}	{0.03}	{0.03}	{0.03}	{0.09}
Main Controls	No	Yes	Yes	Yes	Yes	Yes	Yes	Yes	Yes	Yes	Yes
Additional Controls	Yes	Yes	Yes	Yes	Yes	Yes	Yes	Yes	Yes	Yes	Yes
Adjusted- $R^2$	0.20	0.22	0.23	0.24	0.24	0.24	0.24	0.22	0.23	0.29	0.32
Observations	932	932	932	932	932	932	932	932	932	932	932

Notes: This Table establishes the robustness of the OLS results to clustering by language phylum and spatial auto-correlation. The additional controls in each column are the ones of the same column in Table D.1. Standardized coefficients. Heteroskedasticity robust standard error estimates are reported in parentheses, clustered at the language phylum in parenthesis and squared brackets, spatial auto-correlation corrected standard errors (Conley, 1999) in squared brackets and Cliff-Ord ML in curly brackets. \*\*\* denotes statistical significance at the 1% level, \*\* at the 5% level, and \* at the 10% level, all for two-sided hypothesis tests.

## C.4 Robustness to Measure of Economic Specialization

Table C.9: Population Diversity and Economic Specialization:  
Robustness to Specialization Measure

	Economic Specialization Measures					
	Number		Share		Score	
	OLS	IV	OLS	IV	OLS	IV
	(1)	(2)	(3)	(4)	(5)	(6)
Population Diversity	0.27*** (0.05)	0.46*** (0.14)	0.33*** (0.05)	0.37*** (0.12)	0.13** (0.06)	0.31** (0.14)
Main Controls	No	Yes	No	Yes	No	Yes
All Additional Controls	No	Yes	No	Yes	No	Yes
First-stage F-statistic		81.54		81.54		81.54
$R^2$	0.08	0.49	0.11	0.49	0.02	0.46
Adjusted- $R^2$	0.07	0.39	0.10	0.39	0.01	0.35
Observations	116	116	116	116	116	116

Notes: Standardized coefficients. Heteroskedasticity robust standard error estimates are reported in parentheses; \*\*\* denotes statistical significance at the 1% level, \*\* at the 5% level, and \* at the 10% level, all for two-sided hypothesis tests.



## D Reduced Form Analysis: Distance to Addis Ababa and Economic Specialization

Table D.1: Population Diversity and Economic Specialization (Reduced Form)

	Economic Specialization								
	(1)	(2)	(3)	(4)	(5)	(6)	(7)	(8)	(9)
Pre-Industrial	-0.41***	-0.43***	-0.44***	-0.45***	-0.37***	-0.40***	-0.36***	-0.46***	-0.39***
Distance to Addis Ababa	(0.10)	(0.10)	(0.10)	(0.09)	(0.12)	(0.10)	(0.09)	(0.11)	(0.13)
Malaria Ecology		-0.31***							-0.34***
		(0.12)							(0.11)
Ecological Diversity			0.30***						0.23**
			(0.10)						(0.10)
Agricultural Suitability (avg.)				0.00					0.06
				(0.13)					(0.10)
Agricultural Suitability (std.)				0.28**					0.36**
				(0.13)					(0.14)
Caloric Suitability (Pre-1500 ,avg.)					-0.18				-0.23
					(0.15)				(0.15)
Caloric Suitability (Pre-1500 ,std.)					0.25**				-0.01
					(0.12)				(0.15)
Temperature (Spatial Corr., Avg.)						0.04			-0.01
						(0.10)			(0.07)
Temperature (Volatility, Avg)						-0.64***			-0.21
						(0.20)			(0.20)
Pct. Area within 100kms of Sea							0.02		-0.12
							(0.10)		(0.11)
Coast Length							0.47**		0.59***
							(0.21)		(0.18)
Ruggedness (Avg.)								-0.32	-0.05
								(0.23)	(0.19)
Pre-Industrial Mobility (avg.)								0.93**	1.15**
								(0.42)	(0.49)
Pre-Industrial Mobility (std.)								-0.08	-0.36**
								(0.13)	(0.16)
Main Controls	Yes	Yes	Yes	Yes	Yes	Yes	Yes	Yes	Yes
Adjusted- $R^2$	0.17	0.23	0.25	0.21	0.19	0.21	0.22	0.19	0.42
Observations	116	116	116	116	116	116	116	116	116

Notes: Standardized coefficients. Heteroskedasticity robust standard error estimates are reported in parentheses; \*\*\* denotes statistical significance at the 1% level, \*\* at the 5% level, and \* at the 10% level, all for two-sided hypothesis tests.

Table D.2: Distance to Addis Ababa and Economic Specialization

	Economic Specialization										
	(1)	(2)	(3)	(4)	(5)	(6)	(7)	(8)	(9)	(10)	(11)
Pre-Industrial Dist. to Addis Ababa	-0.45*** (0.03)	-0.42*** (0.03)	-0.45*** (0.03)	-0.42*** (0.03)	-0.41*** (0.03)	-0.45*** (0.03)	-0.40*** (0.03)	-0.42*** (0.03)	-0.42*** (0.03)	-0.47*** (0.04)	-0.36*** (0.10)
Malaria Ecology			-0.10** (0.04)							-0.07 (0.05)	-0.06 (0.05)
Ecological Diversity				0.15*** (0.03)						0.10*** (0.03)	0.09*** (0.03)
Agricultural Suitability (avg.)					-0.05 (0.04)					-0.17*** (0.04)	-0.14*** (0.04)
Agricultural Suitability (std.)					0.13*** (0.04)					0.09** (0.04)	0.07 (0.04)
Caloric Suitability Index (Pre-1500CE)						0.09*** (0.03)				0.15*** (0.03)	0.11*** (0.03)
Caloric Suitability (Pre-1500 ,std.)						0.08* (0.05)				0.06 (0.05)	0.07 (0.05)
Temperature (Spatial Corr., Avg.)							0.02 (0.02)			0.02 (0.04)	0.03 (0.04)
Temperature (Volatility, Avg)							-0.32*** (0.06)			-0.23*** (0.07)	-0.14* (0.08)
Pct. Area within 100kms of Sea Coast Length								0.02 (0.03)		-0.05 (0.04)	0.01 (0.04)
Ruggedness (Avg.)									0.04 (0.04)	0.04 (0.04)	0.04 (0.03)
Pre-Industrial Mobility (avg.)									0.12* (0.07)	0.05 (0.07)	0.05 (0.07)
Pre-Industrial Mobility (std.)									0.27*** (0.10)	0.41*** (0.11)	0.28** (0.11)
Main Controls	No	Yes	Yes	Yes	Yes	Yes	Yes	Yes	Yes	Yes	Yes
Continental FE	No	No	No	No	No	No	No	No	No	No	Yes
Adjusted- $R^2$	0.20	0.22	0.23	0.24	0.24	0.24	0.24	0.22	0.23	0.29	0.32
Observations	934	934	934	934	934	934	934	934	934	934	934

Notes: Standardized coefficients. Heteroskedasticity robust standard error estimates are reported in parentheses; \*\*\* denotes statistical significance at the 1% level, \*\* at the 5% level, and \* at the 10% level, all for two-sided hypothesis tests.

Table D.3: Distance to Addis Ababa and Economic Specialization

	Economic Specialization									
	(1)	(2)	(3)	(4)	(5)	(6)	(7)	(8)	(9)	(10)
Pre-Industrial Distance to Addis Ababa	-0.48***	-0.37***	-0.33***	-0.35***	-0.36***	-0.36***	-0.40***	-0.39***	-0.36***	-0.36***
	(0.10)	(0.10)	(0.10)	(0.10)	(0.10)	(0.11)	(0.10)	(0.10)	(0.11)	(0.10)
Malaria Ecology			-0.09*							-0.06
			(0.05)							(0.05)
Ecological Diversity				0.13***						0.09***
				(0.03)						(0.03)
Agricultural Suitability (avg.)					-0.05					-0.14***
					(0.04)					(0.04)
Agricultural Suitability (std.)					0.10**					0.07
					(0.04)					(0.04)
Caloric Suitability Index (Pre-1500CE)						0.05*				0.11***
						(0.03)				(0.03)
Caloric Suitability (Pre-1500 ,std.)						0.09**				0.07
						(0.04)				(0.05)
Temperature (Spatial Corr., Avg.)							0.00			0.03
							(0.03)			(0.04)
Temperature (Volatility, Avg)							-0.25***			-0.14*
							(0.06)			(0.08)
Pct. Area within 100kms of Sea								0.06**		0.01
								(0.03)		(0.04)
Coast Length								0.04		0.04
								(0.03)		(0.03)
Ruggedness (Avg.)									0.10	0.05
									(0.06)	(0.07)
Pre-Industrial Mobility (avg.)									0.16	0.28**
									(0.11)	(0.11)
Pre-Industrial Mobility (std.)									-0.06	-0.14*
									(0.08)	(0.08)
Continental FE	Yes	Yes	Yes	Yes	Yes	Yes	Yes	Yes	Yes	Yes
Main Controls	No	Yes	Yes	Yes	Yes	Yes	Yes	Yes	Yes	Yes
Adjusted- $R^2$	0.26	0.28	0.29	0.30	0.29	0.29	0.29	0.29	0.29	0.32
Observations	934	934	934	934	934	934	934	934	934	934

Notes: Standardized coefficients. Heteroskedasticity robust standard error estimates are reported in parentheses; \*\*\* denotes statistical significance at the 1% level, \*\* at the 5% level, and \* at the 10% level, all for two-sided hypothesis tests.

Table D.4: Heterogeneous Effects of Distance to Addis Ababa on Economic Specialization

	Economic Specialization					
	(1)	(2)	(3)	(4)	(5)	(6)
Pre-Industrial Distance to Addis Ababa	-0.07*** (0.00)	-0.05*** (0.01)	-0.06*** (0.00)	-0.02** (0.01)	-0.05*** (0.00)	-0.05*** (0.01)
Ecological Diversity		1.55*** (0.32)				
Pre-Industrial Distance to Addis Ababa × Ecological Diversity		-0.07*** (0.02)				
Agricultural Suitability (std.)			3.84*** (0.91)			
Pre-Industrial Distance to Addis Ababa × Agricultural Suitability (std.)			-0.24*** (0.07)			
Temperature (Volatility, Avg)				-0.01 (0.20)		
Pre-Industrial Distance to Addis Ababa × Temperature (Volatility, Avg)				-0.05*** (0.01)		
Ruggedness (Avg.)					0.00*** (0.00)	
Pre-Industrial Distance to Addis Ababa × Ruggedness (Avg.)					-0.00*** (0.00)	
Pre-Industrial Mobility (std.)						6.93*** (1.99)
Pre-Industrial Distance to Addis Ababa × Pre-Industrial Mobility (std.)						-0.44*** (0.14)
Main Controls	Yes	Yes	Yes	Yes	Yes	Yes
Adjusted- $R^2$	0.22	0.25	0.25	0.25	0.26	0.24
Observations	934	934	934	934	934	934

Notes: Heteroskedasticity robust standard error estimates are reported in parentheses; \*\*\* denotes statistical significance at the 1% level, \*\* at the 5% level, and \* at the 10% level, all for two-sided hypothesis tests.

Table D.5: Distance to Addis Ababa, Pre-Industrial Development, and Economic Specialization

	Economic Specialization					
	Full Sample				Community Sample	Size
	(1)	(2)	(3)	(4)	(5)	(6)
Pre-Industrial Distance to Addis Ababa	-0.42*** (0.03)	-0.44*** (0.06)	-0.35*** (0.02)	-0.43*** (0.03)	-0.41*** (0.03)	-0.28*** (0.03)
Origitime		-0.03 (0.07)				
Years Since Neolithic Revolution			0.27*** (0.04)			
Population Density (1500CE)				0.11*** (0.04)		
Main Controls	Yes	Yes	Yes	Yes	Yes	Yes
Community Size FE	No	No	No	No	No	Yes
Adjusted- $R^2$	0.22	0.22	0.29	0.24	0.22	0.47
Observations	938	927	926	913	512	512

Notes: Standardized coefficients. Heteroskedasticity robust standard error estimates are reported in parentheses; \*\*\* denotes statistical significance at the 1% level, \*\* at the 5% level, and \* at the 10% level, all for two-sided hypothesis tests.

Table D.6: Distance to Addis Ababa, Pre-Industrial Development, and Economic Specialization

	Economic Specialization					
	Full Sample				Community Size Sample	Size
	(1)	(2)	(3)	(4)	(5)	(6)
Pre-Industrial Distance to Addis Ababa	-0.42*** (0.03)	-0.44*** (0.06)	-0.35*** (0.02)	-0.43*** (0.03)	-0.41*** (0.03)	-0.27*** (0.03)
Origitime		-0.03 (0.07)				
Years Since Neolithic Revolution			0.27*** (0.04)			
Population Density (1500CE)				0.11*** (0.04)		
Mean Size of Local Communities						0.45*** (0.05)
Main Controls	Yes	Yes	Yes	Yes	Yes	Yes
Adjusted- $R^2$	0.22	0.22	0.29	0.24	0.22	0.39
Observations	938	927	926	913	512	512

Notes: Standardized coefficients. Heteroskedasticity robust standard error estimates are reported in parentheses; \*\*\* denotes statistical significance at the 1% level, \*\* at the 5% level, and \* at the 10% level, all for two-sided hypothesis tests.

Table D.7: Distance to Addis Ababa, Pre-Industrial Development, and Economic Specialization

	Pre-Industrial Measures of Trade							
	Economic Specialization	Importance of Trade	Intercommu- nity Trade as Food Source	Money	Credit Source	Writing Records	and Technological Specialization	Complexity
	(1)	(2)	(3)	(4)	(5)	(6)	(7)	(8)
Pre-Industrial Distance to Addis Ababa	-0.38*** (0.05)	-0.23*** (0.06)	-0.39*** (0.07)	-0.45*** (0.06)	-0.18** (0.08)	-0.21*** (0.06)	-0.29*** (0.05)	-0.36*** (0.06)
Main Controls	Yes	Yes	Yes	Yes	Yes	Yes	Yes	Yes
Additonal Controls	Yes	Yes	Yes	Yes	Yes	Yes	Yes	Yes
Adjusted- $R^2$	0.34	0.04	0.18	0.25	0.14	0.27	0.28	0.31
Observations	168	168	165	165	153	168	168	168

Notes: Standardized coefficients. Heteroskedasticity robust standard error estimates are reported in parentheses; \*\*\* denotes statistical significance at the 1% level, \*\* at the 5% level, and \* at the 10% level, all for two-sided hypothesis tests.

## E Linguistic Diversity and Economic Specialization

This section explores the relation between economic specialization and another proxy of population diversity, as measured by linguistic diversity. In this paper linguistic diversity refers to a language's diversity in terms of number of genders, consonant inventory, and vowel quality inventory (Dryer, 2013) and not to the number of languages in a location, i.e., in captures diversity *within* a population and *not across* populations.

Table E.1: Linguistic Diversity and Distance to Addis-Ababa

	Linguistic Diversity								Speciali- zation
	Full Sample								
	(1)	(2)	(3)	(4)	(5)	(6)	(7)	(8)	
Panel A: Linguistic Diversity (Consonant Inventory)									
Pre-Industrial Distance to Addis Ababa	-0.42*** (0.05)	-0.36*** (0.05)	-0.35*** (0.05)	-0.35*** (0.05)	-0.36*** (0.05)	-0.36*** (0.05)	-0.38*** (0.06)	-0.37*** (0.06)	-0.37*** (0.07)
Adjusted- $R^2$	0.17	0.26	0.26	0.26	0.26	0.26	0.26	0.27	0.27
$R^2$	0.17	0.27	0.27	0.28	0.28	0.28	0.28	0.31	0.31
Observations	299	299	299	299	299	299	299	299	254
Panel B: Linguistic Diversity (Vowel Quality Inventory)									
Pre-Industrial Distance to Addis Ababa	-0.29*** (0.06)	-0.32*** (0.07)	-0.27*** (0.07)	-0.32*** (0.07)	-0.34*** (0.07)	-0.34*** (0.07)	-0.36*** (0.07)	-0.31*** (0.07)	-0.33*** (0.08)
Adjusted- $R^2$	0.08	0.14	0.17	0.14	0.15	0.16	0.15	0.19	0.22
$R^2$	0.09	0.16	0.19	0.16	0.17	0.19	0.18	0.23	0.27
Observations	301	301	301	301	301	301	301	301	255
Panel C: Linguistic Diversity (Number of Genders)									
Pre-Industrial Distance to Addis Ababa	-0.25*** (0.06)	-0.25*** (0.06)	-0.23*** (0.06)	-0.26*** (0.06)	-0.27*** (0.06)	-0.25*** (0.06)	-0.31*** (0.08)	-0.30*** (0.09)	-0.33*** (0.08)
Adjusted- $R^2$	0.06	0.17	0.17	0.18	0.18	0.16	0.19	0.20	0.23
$R^2$	0.06	0.20	0.21	0.22	0.23	0.20	0.23	0.28	0.32
Observations	152	152	152	152	152	152	152	152	130
Main Controls	No	Yes	Yes	Yes	Yes	Yes	Yes	Yes	Yes
Additional Controls	-	-	Malaria	Agr. Suit.	CSI	Sea	Mobility	All	All

Notes: This table establishes the negative statistically and economically significant relation between measures of linguistic diversity and the distance to Addis Ababa after accounting for the set of basic geographical controls of Table 1 and an extended set of confounders and measures of isolation. Each column includes the same set of controls as the same column in Table 3. Standardized coefficients. Heteroskedasticity robust standard error estimates are reported in parentheses; \*\*\* denotes statistical significance at the 1% level, \*\* at the 5% level, and \* at the 10% level, all for two-sided hypothesis tests.

Table E.2: Linguistic Diversity and Distance to Addis-Ababa

	Linguistic Diversity (Consonant Inventory)								
	Full Sample								Specialization
	(1)	(2)	(3)	(4)	(5)	(6)	(7)	(8)	(9)
Pre-Industrial Distance to Addis Ababa	-0.42***	-0.36***	-0.35***	-0.35***	-0.36***	-0.36***	-0.38***	-0.37***	-0.37***
	(0.05)	(0.05)	(0.05)	(0.05)	(0.05)	(0.05)	(0.06)	(0.06)	(0.07)
Malaria Ecology			0.04					-0.00	-0.04
			(0.06)					(0.07)	(0.08)
Agricultural Suitability (avg.)				-0.05				-0.05	-0.04
				(0.06)				(0.08)	(0.08)
Agricultural Suitability (std.)				0.05				0.09	0.06
				(0.05)				(0.06)	(0.06)
Caloric Suitability (Pre-1500 ,avg.)					0.01			0.03	0.03
					(0.06)			(0.07)	(0.08)
Caloric Suitability (Pre-1500 ,std.)					-0.11*			-0.13*	-0.11
					(0.06)			(0.07)	(0.07)
Pct. Area within 100kms of Sea						-0.07		-0.08	-0.10
						(0.06)		(0.06)	(0.07)
Coast Length						0.11		0.13	0.14
						(0.09)		(0.08)	(0.09)
Ruggedness (Avg.)							0.10	0.10	0.07
							(0.12)	(0.13)	(0.14)
Pre-Industrial Mobility (avg.)							0.30	0.30	0.26
							(0.22)	(0.25)	(0.27)
Pre-Industrial Mobility (std.)							-0.17	-0.14	-0.06
							(0.11)	(0.12)	(0.13)
Main Controls	No	Yes	Yes	Yes	Yes	Yes	Yes	Yes	Yes
Adjusted- $R^2$	0.17	0.26	0.26	0.26	0.26	0.26	0.26	0.27	0.27
$R^2$	0.17	0.27	0.27	0.28	0.28	0.28	0.28	0.31	0.31
Observations	299	299	299	299	299	299	299	299	254

Notes: Standardized coefficients. Heteroskedasticity robust standard error estimates are reported in parentheses; \*\*\* denotes statistical significance at the 1% level, \*\* at the 5% level, and \* at the 10% level, all for two-sided hypothesis tests.



Table E.3: Linguistic Diversity and Distance to Addis-Ababa

	Linguistic Diversity (Vowel Quality Inventory)								
	Full Sample								Specialization
	(1)	(2)	(3)	(4)	(5)	(6)	(7)	(8)	(9)
Pre-Industrial	-0.29***	-0.32***	-0.27***	-0.32***	-0.34***	-0.34***	-0.36***	-0.31***	-0.33***
Distance to Addis Ababa	(0.06)	(0.07)	(0.07)	(0.07)	(0.07)	(0.07)	(0.07)	(0.07)	(0.08)
Malaria Ecology			0.20***					0.21***	0.23***
			(0.06)					(0.07)	(0.07)
Agricultural Suitability (avg.)				0.01				-0.16**	-0.19**
				(0.06)				(0.08)	(0.08)
Agricultural Suitability (std.)				0.05				0.03	0.03
				(0.06)				(0.06)	(0.07)
Caloric Suitability (Pre-1500 ,avg.)					0.14**			0.20**	0.25***
					(0.07)			(0.08)	(0.08)
Caloric Suitability (Pre-1500 ,std.)					-0.08			-0.04	-0.04
					(0.07)			(0.07)	(0.07)
Pct. Area within 100kms of Sea						-0.19***		-0.09	-0.12
						(0.06)		(0.07)	(0.07)
Coast Length						0.07		0.10	0.12
						(0.09)		(0.10)	(0.11)
Ruggedness (Avg.)							-0.17	-0.22*	-0.19
							(0.12)	(0.12)	(0.13)
Pre-Industrial Mobility (avg.)							0.36	0.35	0.28
							(0.26)	(0.26)	(0.27)
Pre-Industrial Mobility (std.)							-0.16	-0.04	-0.02
							(0.12)	(0.12)	(0.13)
Main Controls	No	Yes	Yes	Yes	Yes	Yes	Yes	Yes	Yes
Adjusted- $R^2$	0.08	0.14	0.17	0.14	0.15	0.16	0.15	0.19	0.22
$R^2$	0.09	0.16	0.19	0.16	0.17	0.19	0.18	0.23	0.27
Observations	301	301	301	301	301	301	301	301	255

Notes: Standardized coefficients. Heteroskedasticity robust standard error estimates are reported in parentheses; \*\*\* denotes statistical significance at the 1% level, \*\* at the 5% level, and \* at the 10% level, all for two-sided hypothesis tests.

Table E.4: Linguistic Diversity and Distance to Addis-Ababa

	Linguistic Diversity (Number of Genders)								
	Full Sample								Specialization
	(1)	(2)	(3)	(4)	(5)	(6)	(7)	(8)	(9)
Pre-Industrial Distance to Addis Ababa	-0.25*** (0.06)	-0.25*** (0.06)	-0.23*** (0.06)	-0.26*** (0.06)	-0.27*** (0.06)	-0.25*** (0.06)	-0.31*** (0.08)	-0.30*** (0.09)	-0.33*** (0.08)
Malaria Ecology			0.11 (0.12)					0.05 (0.15)	0.04 (0.16)
Agricultural Suitability (avg.)				0.18** (0.07)				0.14 (0.09)	0.17* (0.09)
Agricultural Suitability (std.)				-0.08 (0.07)				-0.11 (0.09)	-0.08 (0.09)
Caloric Suitability (Pre-1500 ,avg.)					0.21** (0.10)			0.18 (0.12)	0.13 (0.10)
Caloric Suitability (Pre-1500 ,std.)					-0.15 (0.11)			-0.13 (0.12)	-0.08 (0.11)
Pct. Area within 100kms of Sea						-0.05 (0.09)		-0.00 (0.09)	-0.01 (0.10)
Coast Length						0.10 (0.13)		0.18 (0.13)	0.23 (0.16)
Ruggedness (Avg.)							0.23 (0.15)	0.33** (0.13)	0.38*** (0.14)
Pre-Industrial Mobility (avg.)							-0.06 (0.26)	-0.47 (0.33)	-0.58 (0.35)
Pre-Industrial Mobility (std.)							-0.31* (0.16)	-0.19 (0.20)	-0.20 (0.19)
Main Controls	No	Yes	Yes	Yes	Yes	Yes	Yes	Yes	Yes
Adjusted- $R^2$	0.06	0.17	0.17	0.18	0.18	0.16	0.19	0.20	0.23
$R^2$	0.06	0.20	0.21	0.22	0.23	0.20	0.23	0.28	0.32
Observations	152	152	152	152	152	152	152	152	130

Notes: Standardized coefficients. Heteroskedasticity robust standard error estimates are reported in parentheses; \*\*\* denotes statistical significance at the 1% level, \*\* at the 5% level, and \* at the 10% level, all for two-sided hypothesis tests.

Table E.5: Population Diversity and Economic Specialization (IV)  
Linguistic Diversity

	Economic Specialization									
	OLS		IV							
	(1)	(2)	(3)	(4)	(5)	(6)	(7)	(8)	(9)	(10)
Panel A: Linguistic Diversity (Consonant Inventory)										
Linguistic Diversity	0.20*** (0.06)	1.13*** (0.20)	1.15*** (0.22)	1.12*** (0.20)	1.13*** (0.21)	1.18*** (0.21)	1.12*** (0.21)	1.13*** (0.20)	1.15*** (0.22)	1.22*** (0.28)
First-stage F-statistic		46.23	44.68	45.37	43.58	44.29	43.27	44.19	36.73	27.68
Adjusted- $R^2$	0.06	-0.67	-0.71	-0.61	-0.68	-0.73	-0.67	-0.68	-0.72	-0.75
Observations	254	254	254	254	254	254	254	254	254	254
Panel B: Linguistic Diversity (Vowel Quality Inventory)										
Linguistic Diversity	0.39*** (0.06)	1.15*** (0.24)	1.38*** (0.34)	1.16*** (0.24)	1.14*** (0.25)	1.13*** (0.22)	1.02*** (0.21)	1.06*** (0.21)	1.05*** (0.22)	1.29*** (0.33)
First-stage F-statistic		22.60	16.32	24.31	21.43	26.88	27.78	30.08	26.28	18.78
Adjusted- $R^2$	0.17	-0.39	-0.69	-0.39	-0.37	-0.35	-0.19	-0.24	-0.24	-0.52
Observations	255	255	255	255	255	255	255	255	255	255
Panel C: Linguistic Diversity (Number of Genders)										
Linguistic Diversity	0.13 (0.08)	1.19*** (0.28)	1.30*** (0.34)	1.16*** (0.28)	1.18*** (0.29)	1.21*** (0.29)	1.09*** (0.26)	1.16*** (0.28)	0.91*** (0.22)	0.87*** (0.31)
First-stage F-statistic		29.97	24.50	29.02	29.16	28.00	30.19	28.64	33.65	17.21
Adjusted- $R^2$	-0.01	-1.03	-1.25	-0.96	-0.96	-1.07	-0.85	-1.00	-0.52	-0.43
Observations	130	130	130	130	130	130	130	130	130	130
Main Controls	No	Yes	Yes	Yes	Yes	Yes	Yes	Yes	Yes	Yes
Additional Controls	-	-	Malaria	Eco. Div.	Agr. Suit.	CSI	Volatility	Sea	Mobility	All

Notes: This table establishes the positive statistically and economically significant causal effect of population diversity on economic specialization, by instrumenting population diversity with the distance to Addis Ababa (see section 4.2). These results are robust to accounting for the set of basic geographical controls of Table 1 and the extended set of confounders from Table 2. Each column includes the same set of controls as the same column in Table 5. Standardized coefficients. Heteroskedasticity robust standard error estimates are reported in parentheses; \*\*\* denotes statistical significance at the 1% level, \*\* at the 5% level, and \* at the 10% level, all for two-sided hypothesis tests.

Table E.6: Population Diversity and Economic Specialization (IV)  
Linguistic Diversity (Consonant Inventories)

	Economic Specialization									
	OLS		IV							
	(1)	(2)	(3)	(4)	(5)	(6)	(7)	(8)	(9)	(10)
Linguistic Diversity	0.20*** (0.06)	1.13*** (0.20)	1.15*** (0.22)	1.12*** (0.20)	1.13*** (0.21)	1.18*** (0.21)	1.12*** (0.21)	1.13*** (0.20)	1.15*** (0.22)	1.22*** (0.28)
Malaria Ecology			-0.03 (0.10)							0.01 (0.11)
Ecological Diversity				0.26*** (0.09)						0.22** (0.11)
Agricultural Suitability (avg.)					-0.00 (0.10)					-0.19 (0.12)
Agricultural Suitability (std.)					0.12 (0.11)					-0.03 (0.12)
Caloric Suitability (Pre-1500 ,avg.)						0.07 (0.11)				0.09 (0.12)
Caloric Suitability (Pre-1500 ,std.)						0.21* (0.12)				0.23 (0.15)
Temperature (Spatial Corr., Avg.)							-0.11 (0.09)			-0.27** (0.13)
Temperature (Volatility, Avg)							0.22 (0.23)			0.31 (0.28)
Pct. Area within 100kms of Sea								-0.05 (0.09)		-0.14 (0.11)
Coast Length								0.14 (0.21)		0.15 (0.19)
Ruggedness (Avg.)									-0.16 (0.18)	-0.17 (0.19)
Pre-Industrial Mobility (avg.)									-0.00 (0.31)	0.42 (0.35)
Pre-Industrial Mobility (std.)									0.03 (0.17)	-0.17 (0.20)
Main Controls	Yes	Yes	Yes	Yes	Yes	Yes	Yes	Yes	Yes	Yes
First-stage F-statistic		46.23	44.68	45.37	43.58	44.29	43.27	44.19	36.73	27.68
Adjusted- $R^2$	0.06	-0.67	-0.71	-0.61	-0.68	-0.73	-0.67	-0.68	-0.72	-0.75
Observations	254	254	254	254	254	254	254	254	254	254

Notes: Standardized coefficients. Heteroskedasticity robust standard error estimates are reported in parentheses; \*\*\* denotes statistical significance at the 1% level, \*\* at the 5% level, and \* at the 10% level, all for two-sided hypothesis tests.

Table E.7: Population Diversity and Economic Specialization (IV)  
Linguistic Diversity (Vowel Quality Inventories)

	Economic Specialization									
	OLS		IV							
	(1)	(2)	(3)	(4)	(5)	(6)	(7)	(8)	(9)	(10)
Linguistic Diversity	0.39*** (0.06)	1.15*** (0.24)	1.38*** (0.34)	1.16*** (0.24)	1.14*** (0.25)	1.13*** (0.22)	1.02*** (0.21)	1.06*** (0.21)	1.05*** (0.22)	1.29*** (0.33)
Malaria Ecology			-0.36** (0.14)							-0.34** (0.17)
Ecological Diversity				-0.07 (0.10)						-0.19 (0.12)
Agricultural Suitability (avg.)					-0.04 (0.09)					0.01 (0.15)
Agricultural Suitability (std.)					0.08 (0.09)					0.10 (0.11)
Caloric Suitability (Pre-1500 ,avg.)						-0.10 (0.08)				-0.11 (0.14)
Caloric Suitability (Pre-1500 ,std.)						0.19* (0.10)				0.20* (0.11)
Temperature (Spatial Corr., Avg.)							-0.06 (0.08)			-0.05 (0.12)
Temperature (Volatility, Avg)							-0.42*** (0.16)			-0.27 (0.23)
Pct. Area within 100kms of Sea								0.11 (0.09)		0.00 (0.14)
Coast Length								0.19** (0.09)		0.15 (0.09)
Ruggedness (Avg.)									0.06 (0.15)	-0.06 (0.20)
Pre-Industrial Mobility (avg.)									-0.04 (0.29)	0.42 (0.36)
Pre-Industrial Mobility (std.)									0.13 (0.17)	-0.11 (0.22)
Main Controls	Yes	Yes	Yes	Yes	Yes	Yes	Yes	Yes	Yes	Yes
First-stage F-statistic		22.60	16.32	24.31	21.43	26.88	27.78	30.08	26.28	18.78
Adjusted- $R^2$	0.17	-0.39	-0.69	-0.39	-0.37	-0.35	-0.19	-0.24	-0.24	-0.52
Observations	255	255	255	255	255	255	255	255	255	255

Notes: Standardized coefficients. Heteroskedasticity robust standard error estimates are reported in parentheses; \*\*\* denotes statistical significance at the 1% level, \*\* at the 5% level, and \* at the 10% level, all for two-sided hypothesis tests.

Table E.8: Population Diversity and Economic Specialization (IV)  
Linguistic Diversity (Number of Genders)

	Economic Specialization									
	OLS	IV								
	(1)	(2)	(3)	(4)	(5)	(6)	(7)	(8)	(9)	(10)
Linguistic Diversity	0.13 (0.08)	1.19*** (0.28)	1.30*** (0.34)	1.16*** (0.28)	1.18*** (0.29)	1.21*** (0.29)	1.09*** (0.26)	1.16*** (0.28)	0.91*** (0.22)	0.87*** (0.31)
Malaria Ecology			-0.20 (0.23)							0.01 (0.21)
Ecological Diversity				0.20 (0.12)						0.04 (0.13)
Agricultural Suitability (avg.)					-0.20 (0.13)					-0.35** (0.16)
Agricultural Suitability (std.)					0.26* (0.13)					0.17 (0.17)
Caloric Suitability (Pre-1500 ,avg.)						-0.01 (0.15)				0.23 (0.16)
Caloric Suitability (Pre-1500 ,std.)						0.19 (0.17)				0.09 (0.18)
Temperature (Spatial Corr., Avg.)							-0.07 (0.14)			-0.03 (0.17)
Temperature (Volatility, Avg)							-0.34 (0.30)			-0.45 (0.30)
Pct. Area within 100kms of Sea								0.02 (0.14)		-0.14 (0.18)
Coast Length								0.15 (0.33)		0.29 (0.30)
Ruggedness (Avg.)									-0.47** (0.19)	-0.59*** (0.20)
Pre-Industrial Mobility (avg.)									0.13 (0.35)	0.66 (0.53)
Pre-Industrial Mobility (std.)									0.46*** (0.16)	0.26 (0.20)
Main Controls	Yes	Yes	Yes	Yes	Yes	Yes	Yes	Yes	Yes	Yes
First-stage F-statistic		29.97	24.50	29.02	29.16	28.00	30.19	28.64	33.65	17.21
Adjusted- $R^2$	-0.01	-1.03	-1.25	-0.96	-0.96	-1.07	-0.85	-1.00	-0.52	-0.43
Observations	130	130	130	130	130	130	130	130	130	130

Notes: Standardized coefficients. Heteroskedasticity robust standard error estimates are reported in parentheses; \*\*\* denotes statistical significance at the 1% level, \*\* at the 5% level, and \* at the 10% level, all for two-sided hypothesis tests.

Table E.9: Population Diversity and Economic Specialization (IV)  
Linguistic Diversity

	Economic Specialization								
	Linguistic Diversity (Consonant Inventory)			Linguistic Diversity (Vowel Quality Inventory)			Linguistic Diversity (Number of Genders)		
	OLS	IV		OLS	IV		OLS	IV	
	(1)	(2)	(3)	(4)	(5)	(6)	(7)	(8)	(9)
Population Diversity	0.21*** (0.06)	1.30*** (0.22)	1.43*** (0.31)	0.40*** (0.06)	1.30*** (0.27)	1.53*** (0.37)	0.12 (0.08)	1.38*** (0.32)	1.05*** (0.35)
Main Controls	Yes	Yes	Yes	Yes	Yes	Yes	Yes	Yes	Yes
Additional Controls	No	No	Yes	No	No	Yes	No	No	Yes
First-stage F-statistic		45.11	27.63		22.85	18.08		29.40	17.22
Adjusted- $R^2$	0.09	-0.92	-1.09	0.21	-0.56	-0.88	0.00	-1.43	-0.70
Observations	255	255	255	256	256	256	131	131	131

Notes: This table establishes the positive statistically and economically significant causal effect of population diversity on economic specialization (Share), by instrumenting population diversity (as proxied by linguistic diversity measures) with the distance to Addis Ababa (see section 4.2). These results are robust to accounting for the set of basic geographical controls of Table 1 and the extended set of confounders from Table 2. Each column includes the same set of controls as the same column in Table 5. Standardized coefficients. Heteroskedasticity robust standard error estimates are reported in parentheses; \*\*\* denotes statistical significance at the 1% level, \*\* at the 5% level, and \* at the 10% level, all for two-sided hypothesis tests.

Table E.10: Population Diversity and Economic Specialization (IV)  
Linguistic Diversity

	Economic Specialization								
	Linguistic Diversity (Consonant Inventory)			Linguistic Diversity (Vowel Quality Inventory)			Linguistic Diversity (Number of Genders)		
	OLS	IV		OLS	IV		OLS	IV	
	(1)	(2)	(3)	(4)	(5)	(6)	(7)	(8)	(9)
Population Diversity	0.15** (0.06)	0.81*** (0.18)	0.97*** (0.25)	0.31*** (0.07)	0.82*** (0.22)	1.04*** (0.32)	0.11 (0.08)	1.01*** (0.28)	0.68** (0.28)
Main Controls	Yes	Yes	Yes	Yes	Yes	Yes	Yes	Yes	Yes
Additional Controls	No	No	Yes	No	No	Yes	No	No	Yes
First-stage F-statistic		45.11	27.63		22.85	18.08		29.40	17.22
Adjusted- $R^2$	0.01	-0.36	-0.46	0.09	-0.16	-0.33	-0.03	-0.75	-0.18
Observations	255	255	255	256	256	256	131	131	131

Notes: This table establishes the positive statistically and economically significant causal effect of population diversity on economic specialization (Score), by instrumenting population diversity (as proxied by linguistic diversity measures) with the distance to Addis Ababa (see section 4.2). These results are robust to accounting for the set of basic geographical controls of Table 1 and the extended set of confounders from Table 2. Each column includes the same set of controls as the same column in Table 5. Standardized coefficients. Heteroskedasticity robust standard error estimates are reported in parentheses; \*\*\* denotes statistical significance at the 1% level, \*\* at the 5% level, and \* at the 10% level, all for two-sided hypothesis tests.

## F Persistence

Table F.1: Pre-modern Economic Specialization and Contemporary Economic Development

	Log(Average Light Density + 0.01)					
	Whole World				Old World	
	(1)	(2)	(3)	(4)	(5)	(6)
Economic Specialization	0.07** (0.03)	0.19*** (0.03)	0.16*** (0.03)	0.12*** (0.03)	0.20*** (0.04)	0.16*** (0.04)
Main Controls	Yes	No	Yes	Yes	Yes	Yes
Continental FE	No	Yes	Yes	Yes	Yes	Yes
Neolithic + Origtime	No	No	No	Yes	No	Yes
Adjusted- $R^2$	0.26	0.35	0.40	0.41	0.31	0.33
Observations	900	900	900	900	565	565

Notes: This table establishes the persistent positive statistically and economically significant effect of pre-modern economic specialization on economic development. These results account for the main set of geographical controls in Table 7, continental fixed effects, the timing of transition to the Neolithic and the number of years of continuous settlement. Standardized coefficients. Heteroskedasticity robust standard error estimates are reported in parentheses; \*\*\* denotes statistical significance at the 1% level, \*\* at the 5% level, and \* at the 10% level, all for two-sided hypothesis tests.

Table F.2: Pre-industrial Economic Specialization and Contemporary Economic Development

	Log(Average Light Density + 0.01)							
	Whole World				Old World			
	(1)	(2)	(3)	(4)	(5)	(6)	(7)	(8)
Pre-modern Economic Specialization	0.09*** (0.03)	0.09*** (0.03)	0.07*** (0.02)	0.06** (0.03)	0.10*** (0.04)	0.11*** (0.03)	0.09*** (0.03)	0.09** (0.03)
Regional FE	Yes	Yes	Yes	Yes	Yes	Yes	Yes	Yes
Main Controls	No	Yes	Yes	Yes	No	Yes	Yes	Yes
All Additional Controls	No	No	Yes	Yes	No	No	Yes	Yes
Neolithic + Origtime	No	No	No	Yes	No	No	No	Yes
Adjusted- $R^2$	0.43	0.47	0.57	0.57	0.40	0.45	0.54	0.53
Observations	900	900	900	900	565	565	565	565

Notes: This table establishes the persistent positive statistically and economically significant effect of pre-modern economic specialization on economic development. These results account for the set of geographical controls in Table 7, regional fixed effects, the timing of transition to the Neolithic and number of years of continuous settlement. Standardized coefficients. Heteroskedasticity robust standard error estimates are reported in parentheses; \*\*\* denotes statistical significance at the 1% level, \*\* at the 5% level, and \* at the 10% level, all for two-sided hypothesis tests.



Table F.3: Pre-modern Economic Specialization and Contemporary Economic Development

	Log(Average Light Density + 0.01)							
	Whole World				Old World			
	OLS		IV		OLS		IV	
	(1)	(2)	(3)	(4)	(5)	(6)	(7)	(8)
Pre-modern Economic Specialization	0.06** (0.03)	0.06** (0.03)	0.10*** (0.03)	0.10*** (0.03)	0.09** (0.03)	0.09** (0.03)	0.12*** (0.05)	0.10** (0.04)
Regional FE	Yes	Yes	Yes	Yes	Yes	Yes	Yes	Yes
Main Controls	Yes	Yes	Yes	Yes	Yes	Yes	Yes	Yes
All Additional Controls	Yes	Yes	Yes	Yes	Yes	Yes	Yes	Yes
Neolithic + Origtime	No	Yes	No	Yes	No	Yes	No	Yes
First-stage F-statistic			75.85	76.73			31.06	30.31
Hansen's J-statistic			51.12	53.88			44.83	49.14
J-stat p-value			0.04	0.04			0.07	0.04
Adjusted- $R^2$	0.25	0.25	0.23	0.23	0.23	0.23	0.20	0.20
Observations	898	898	898	898	563	563	563	563

Notes: This table establishes the persistent positive statistically and economically significant effect of pre-modern economic specialization on economic development. These results account for the main set of geographical controls in Table 7, regional fixed effects, the timing of transition to the Neolithic and number of years of continuous settlement. Standardized coefficients. Heteroskedasticity robust standard error estimates are reported in parentheses; \*\*\* denotes statistical significance at the 1% level, \*\* at the 5% level, and \* at the 10% level, all for two-sided hypothesis tests.

Table F.4: Pre-modern Economic Specialization and Contemporary Occupational Heterogeneity by Skill Level

	Contemporary Occupational Heterogeneity				
	All	Primary		Secondary	
		Low	High	Low	High
	(1)	(2)	(3)	(4)	(5)
Pre-modern Economic Specialization	1.09*** (0.23)	0.46*** (0.12)	0.63*** (0.16)	0.53*** (0.14)	0.56*** (0.16)
Main Controls	Yes	Yes	Yes	Yes	Yes
All Additional Controls	Yes	Yes	Yes	Yes	Yes
Country FE	Yes	Yes	Yes	Yes	Yes
Adjusted- $R^2$	0.09	0.03	0.13	0.08	0.11
Observations	118	118	118	118	118

Notes: This table establishes the robustness of the results in Table 15 to the inclusion of country fixed effects. High skill occupations are those which employ a higher share of individuals with completed primary/secondary school or higher level of education attainment than the African average. These results account for the full set of geographical controls in Table 7 and regional fixed effects. Heteroskedasticity robust standard error estimates are reported in parentheses; \*\*\* denotes statistical significance at the 1% level, \*\* at the 5% level, and \* at the 10% level, all for two-sided hypothesis tests.

Table F.5: Pre-modern Economic Specialization and Contemporary High Skill Occupational Heterogeneity

	Contemporary High Skill Occupational Heterogeneity							
	Primary				Secondary			
	OLS		IV		OLS		IV	
	(1)	(2)	(3)	(4)	(5)	(6)	(7)	(8)
Pre-modern Economic Specialization	0.62** (0.25)	0.54** (0.27)	0.69*** (0.24)	0.51** (0.23)	0.56** (0.25)	0.48* (0.25)	0.65*** (0.24)	0.45** (0.22)
Main Controls	Yes	Yes	Yes	Yes	Yes	Yes	Yes	Yes
All Additional Controls	Yes	Yes	Yes	Yes	Yes	Yes	Yes	Yes
Regional FE	No	Yes	No	Yes	No	Yes	No	Yes
First-stage F-statistic			32.22	367.81			32.22	367.81
Hansen's J-statistic			15.31	17.88			15.28	18.48
J-stat p-value			0.57	0.66			0.58	0.62
Adjusted- $R^2$	0.12	0.10	0.12	0.10	0.11	0.10	0.11	0.10
Observations	101	101	101	101	101	101	101	101

Notes: This table establishes the persistent positive statistically and economically significant effect of pre-modern economic specialization on contemporary occupational heterogeneity by skill level. High skill occupations are those which employ a higher share of individuals with completed primary/secondary school or higher level of education attainment than the African average. These results account for the full set of geographical controls in Table 7 and regional fixed effects. Heteroskedasticity robust standard error estimates are reported in parentheses; \*\*\* denotes statistical significance at the 1% level, \*\* at the 5% level, and \* at the 10% level, all for two-sided hypothesis tests.

Table F.6: Skill Shares in Contemporary Occupational Heterogeneity

	Skill Shares in Contemporary Occupational Heterogeneity					
	Primary			Secondary		
	Low	High	Dif	Low	High	Dif
	(1)	(2)	(3)	(4)	(5)	(6)
Occupational Heterogeneity (All)	-0.01*** (0.002)	0.01*** (0.002)	0.02*** (0.004)	-0.01*** (0.002)	0.01*** (0.002)	0.02*** (0.005)
Main Controls	Yes	Yes	Yes	Yes	Yes	Yes
All Additional Controls	Yes	Yes	Yes	Yes	Yes	Yes
Regional FE	Yes	Yes	Yes	Yes	Yes	Yes
Adjusted- $R^2$	0.45	0.45	0.45	0.46	0.46	0.46
Observations	101	101	101	101	101	101

Notes: This table establishes the positive association between contemporary occupational heterogeneity and the share of high-skill and the difference in shares between high- and low-skill contemporary occupational heterogeneity. High skill occupations are those which employ a higher share of individuals with completed primary/secondary school or higher level of education attainment than the African average. These results account for the full set of geographical controls in Table 7 and regional fixed effects. Heteroskedasticity robust standard error estimates are reported in parentheses; \*\*\* denotes statistical significance at the 1% level, \*\* at the 5% level, and \* at the 10% level, all for two-sided hypothesis tests.

Table F.7: Pre-modern Economic Specialization and Contemporary Economic Complexity

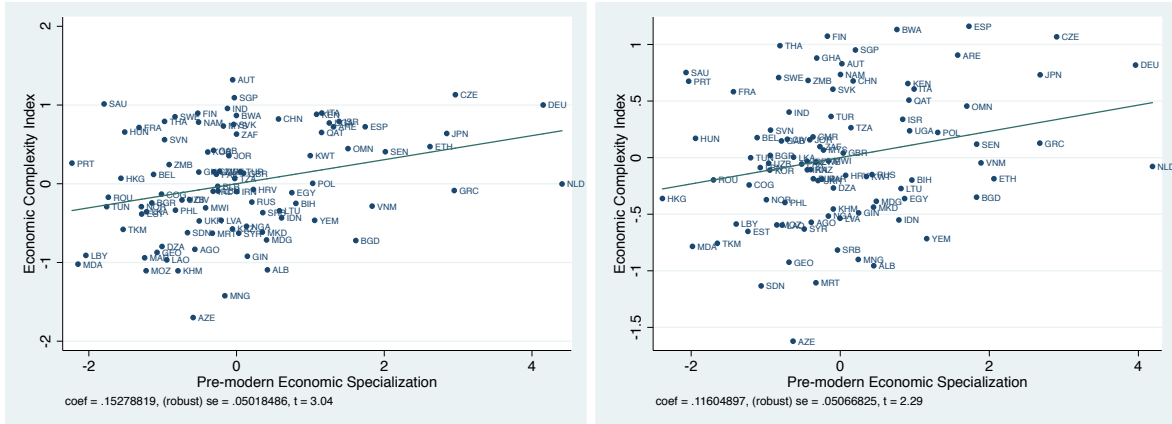
	Economic Complexity Index (2010)							
	Number						Share	Score
	(1)	(2)	(3)	(4)	(5)	(6)	(7)	(8)
Pre-modern Economic Specialization	0.17** (0.08)	0.20*** (0.07)	0.21*** (0.07)	0.20*** (0.07)	0.19*** (0.07)	0.16** (0.07)	0.17** (0.07)	0.14** (0.06)
Continental FE	Yes	Yes	Yes	Yes	Yes	Yes	Yes	Yes
Geographical Controls	No	Yes	Yes	Yes	Yes	Yes	Yes	Yes
Caloric Suitability Controls	No	No	Yes	Yes	Yes	Yes	Yes	Yes
Geographical Diversity Controls	No	No	No	Yes	Yes	Yes	Yes	Yes
Disease Controls	No	No	No	No	Yes	Yes	Yes	Yes
Years Since Neolithic Transition	No	No	No	No	No	Yes	Yes	Yes
Adjusted- $R^2$	0.49	0.59	0.61	0.64	0.66	0.67	0.68	0.67
Observations	95	95	95	95	95	95	95	95

Notes: This table establishes the positive statistically and economically significant association between levels of pre-modern economic specialization and contemporary economic complexity at the country-level. Heteroskedasticity robust standard error estimates are reported in parentheses; \*\*\* denotes statistical significance at the 1% level, \*\* at the 5% level, and \* at the 10% level, all for two-sided hypothesis tests.

Table F.8: Pre-modern Economic Specialization and Contemporary Economic Complexity

	Economic Complexity Index (2010)					
	(1)	(2)	(3)	(4)	(5)	(6)
	Pre-modern Economic Specialization	0.17** (0.08)	0.20*** (0.07)	0.21*** (0.07)	0.20*** (0.07)	0.19*** (0.07)
Continental FE	Yes	Yes	Yes	Yes	Yes	Yes
Geographical Controls	No	Yes	Yes	Yes	Yes	Yes
Caloric Suitability Controls	No	No	Yes	Yes	Yes	Yes
Geographical Diversity Controls	No	No	No	Yes	Yes	Yes
Disease Controls	No	No	No	No	Yes	Yes
Years Since Neolithic Transition	No	No	No	No	No	Yes
Adjusted- $R^2$	0.49	0.59	0.61	0.64	0.66	0.67
Observations	95	95	95	95	95	95

Notes: This table establishes the positive statistically and economically significant association between levels of pre-modern economic specialization and contemporary economic complexity at the country-level. Heteroskedasticity robust standard error estimates are reported in parentheses; \*\*\* denotes statistical significance at the 1% level, \*\* at the 5% level, and \* at the 10% level, all for two-sided hypothesis tests.



(a) Basic Controls (Column 3)

(b) All Controls (Column 6)

Figure F.1: Pre-modern Economic Specialization and Contemporary Economic Complexity

Table F.9: Pre-modern Economic Specialization and Contemporary Economic Complexity

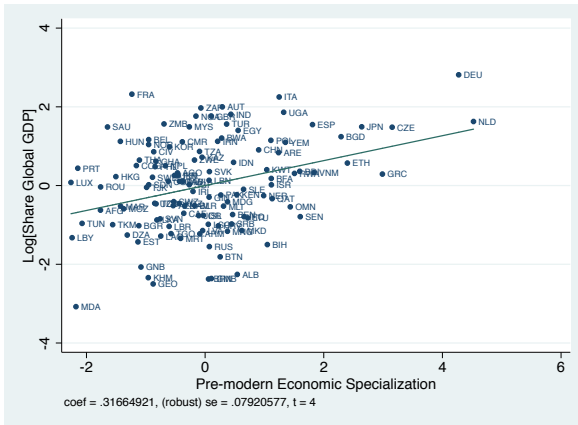
	Contemporary Development			
	Economic Complexity Index	# Goods Exported	Ratio # Goods Exported/Imported	Share Global GDP
	(1)	(2)	(3)	(4)
Pre-modern Economic Specialization	0.19*** (0.07)	0.21*** (0.08)	0.19** (0.08)	0.22*** (0.06)
Regional FE	Yes	Yes	Yes	Yes
Geographical Controls	Yes	Yes	Yes	Yes
Years Since Neolithic Transition	Yes	Yes	Yes	Yes
Adjusted- $R^2$	0.62	0.46	0.46	0.60
Observations	95	80	80	120

Notes: Heteroskedasticity robust standard error estimates are reported in parentheses; \*\*\* denotes statistical significance at the 1% level, \*\* at the 5% level, and \* at the 10% level, all for two-sided hypothesis tests.

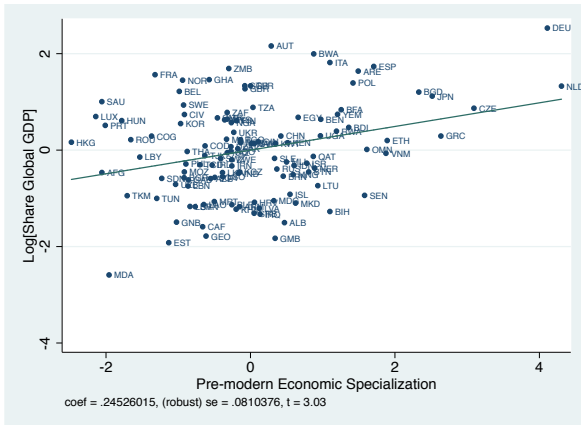
Table F.10: Pre-modern Economic Specialization and Share of Global GDP

	Log[Share of Global GDP] (2005)							
	Number					Share	Score	
	(1)	(2)	(3)	(4)	(5)	(6)	(7)	(8)
Pre-modern Economic Specialization	0.21*** (0.06)	0.19*** (0.06)	0.24*** (0.06)	0.23*** (0.06)	0.19*** (0.06)	0.18*** (0.06)	0.20*** (0.07)	0.13** (0.06)
Continental FE	Yes	Yes	Yes	Yes	Yes	Yes	Yes	Yes
Geographical Controls	No	Yes	Yes	Yes	Yes	Yes	Yes	Yes
Caloric Suitability Controls	No	No	Yes	Yes	Yes	Yes	Yes	Yes
Geographical Diversity Controls	No	No	No	Yes	Yes	Yes	Yes	Yes
Disease Controls	No	No	No	No	Yes	Yes	Yes	Yes
Years Since Neolithic Transition	No	No	No	No	No	Yes	Yes	Yes
Adjusted- $R^2$	0.35	0.52	0.60	0.61	0.70	0.70	0.70	0.69
Observations	120	120	120	120	120	120	120	120

Notes: Heteroskedasticity robust standard error estimates are reported in parentheses; \*\*\* denotes statistical significance at the 1% level, \*\* at the 5% level, and \* at the 10% level, all for two-sided hypothesis tests.



(a) Basic Controls (Column 3)



(b) All Controls (Column 6)

Figure F.2: Pre-modern Economic Specialization and Share of Global GDP