



Munich Personal RePEc Archive

What Are the Benefit of Living in Urban Compared to Rural Area (Cases in Great Bandung Area of West Java, Indonesia)

Afni Afiyani, Siti

Board of language

July 2017

Online at <https://mpra.ub.uni-muenchen.de/80284/>
MPRA Paper No. 80284, posted 21 Jul 2017 09:58 UTC

What Are the Benefit of Living in Urban Compared to Rural Area

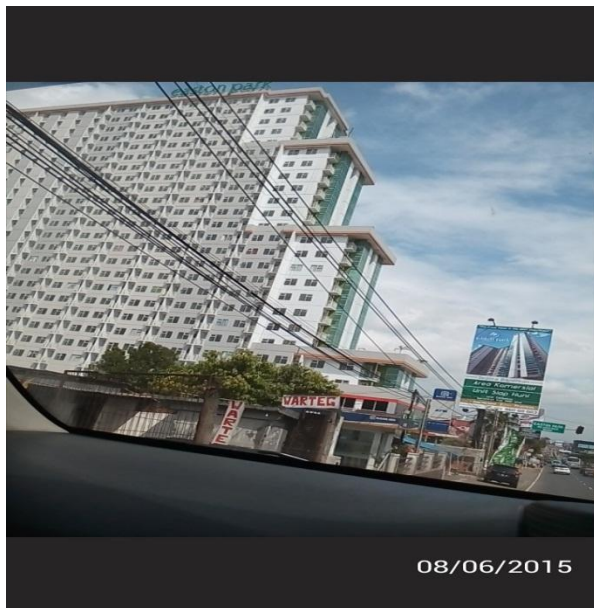
(Cases in Great Bandung Area of West Java, Indonesia)

Siti Afni Afiyani (nengsitiafni@gmail.com)

Abstract

The mayor of a city will, of course, include in the planning the development of all sectors representing the prime services to citizen. Development programs planned in an urban area are easily fulfilled because they are supported with the budget. Revenue from tax, and others revenues, the government executes the planning. Public facilities are built or maintained as to properly function to serve and to facilitate the citizens. All public facilities are available for public in urban. Health facility as hospitals, health centers, Sport centers, education facility consisting of from kinder garden, elementary, high school till higher education are provided and maintained. Some but not many, people who feel unsafe live in rural area due to security ration. This kind of people who have a belief not the same with the belief of the majority in the rural. Primordial belief in rural is sensitive case, some cases is prove the security officer (police) and rural figure person is difficult to control this case. While in city life or urban area, people is rather indifferent in the primordial cases. In rural agricultural life may feel peace and safer.

Key words : Agriculture, garden, officer, rural, urban,



A. Introduction.

Theoretically good governance objectives are to achieve welfare and prosperous condition for people. People live in order, peaceful and prosperous. They can meet all their needs. They can reach what they think and want. And the government as executive can perform

the planning they made, and as approved by legislative body. Development of programs that are planned by the executive and approved by the legislative are in line with the need of the people as the citizen of the city or the town.

The mayor of a city will, of course, include in the planning the development of all sectors representing the prime services to citizen. Development programs planned in an urban area are easily fulfilled because they are supported with the budget. This budget is calculated in accordance with financial potential in the city or town. And the achievement of budget will theoretically, easier achieved in urban area than in rural area. Some causes on the achievements are apparent, urban citizen are mostly having the regular earning. They will agree without much a do to pay tax. When tax officer came to collect or more advanced system the tax-payer are coming to tax office in the end of year to pay tax.

Revenue from tax, and others revenues, the government executes the planning. Public facilities are built or maintained as to properly function to serve and to facilitate the citizens. All public facilities are available for public in urban. Health facility as hospitals, health centers, Sport centers, education facility consisting of from kinder garden, elementary, high school till higher education are provided and maintained. Economic and business facilities as Banks, markets of all kinds are available, Transportation and communication facilities are functioning and their regulation are managed intensively in urban.

Services for social purposes are organized with updated system and links to others relations as to employment provision for those who face the employment problem, and to hospital and health care center or rehabilitation center for those who requires further handling after the social services officer indicates them for further treatments. Recreation and tourist resorts are managed with advanced management to give prime satisfactory services to communities, and in return they are wealthy and fertile source of generating income for the government. In the recreation center are built all kinds of amusements and attractions. In short, all living facilities from traditional of simple facility to luxury are available in urban. Sanitation and health care should be facilitated other wise the disease caused by germs or microorganisms may out break (Subandi, 2014).

Subandi (2012) said the atmosphere contains 78 % nitrogen, 21% oxygen, 0,03 % carbon dioxide, and other trace gases. Carbon dioxide is small in quantity but it is toxic for human and animal. The percentage of the gas must maintain, decreasing or increasing is detrimental to life. The emission of carbon dioxide (toxic gas) out of vehicle and burning organic matter in factories or industries endanger the human health. Fortunately God created automatic mechanism of this balance, carbon dioxide in the atmosphere is absorbed through photosynthesis in the leaves of vegetation "*syajaril akhdlar*", and at the same time the oxygen is released to make the atmosphere

fresh. By that natural mechanism we acknowledge the Almighty Allah by saying *Subhanallah, rabbana ma khalaqta hadza bathila.*

B. Life Facilities.

With this facilities of life of urban, people in rural area are migrating to urban. While rural or villager can produce any agricultural production (Subandi,2011). In the histories of growing cities, the happening of this translocation of people have been taking place for centuries. May be in the United States cities this urbanization have taken place since the 19th-or even in the 18th centuries. However in the newly independent countries as in Indonesia, as for the people of the age up to 60 years old witness the urbanization. This elderly people will say, when we were children (in 1960-1970) the town of Bandung was very quite even in the rush hours and in mid-day. We rode bicycles in a group, we rode side by side, and there were no a single motor-cycle over-run us, and there were very-very rare old var of Chevrolet trademark horned me to ask its way. That time the street was just 4 meters wide, and in the afternoon we could change the street to be a football field. Children were playing football in the street.

In relation to climatic change and gobal warming, Subandi and Abdelwahab (2014) said people who are irresponsible individually or collectively burn the forest, over exploitation of coal/oil/tin/silver/goal/steal, mining, illegal logging, and other destructive activities. They have been having and are changing this world toward warmer stages. Social, humanity (religious) and technology approaches are required. All aspects of knowledge and approach are needed to educate people. To deal with this problem education appeared as solution. To make people cautious and feel concern with global warming, and aware that illegal logging is wrong deeds and are destructive, educators have to create new approach and new content of educational syllabic or curricula adapting the need of environment.

Now Bandung has turned to be a big city with population of 5-8 folds as in the decades when we were children. Traffic jams is the daily scenery and very familiar to the people in this city.

We have 5 to 9 children, and my village is now very crowded with people coming from rural. They are employees of governmental office services, workers in factories, retailers and street vendors, and many others uncertain employment (underemployment or totally unemployment). I feel my village is overcrowded, and we decided to move to rural area in 1990s. However my rural area is now growing to be a suburb area of Great Bandung city.

The photos are near my village, they are built to provide a rent apartment for students of universities and colleges opening branches in the suburb, their main campuses are in Bandung city.

In the short explanation above, it is recognized that city government build and provide infrastructure and public facilities for the citizen or people living in the urban area. It can be made a list of benefit for citizen and people living in urban, among other are:

1. Some but not many, people who feel unsafe live in rural area due to security ration. This kind of people who have a belief not the same with the belief of the majority in the rural. Primordial belief in rural is sensitive case, some cases is prove the security officer (police) and rural figure person is difficult to control this case. While in city life or urban area, people is rather indifferent in the primordial cases. Some times in rural area disease and pest some time outbreak and should be controlled (Subandi, 2014)
2. After technology came to rural, in this case the agricultural technology, only a small number of men are requires to till land and do agricultural activities. Rural unemployment has insisted many people to go outside rural for seeking jobs. Being an urban people this unskilled people can choose any jobs and earning activity. In urban there are many possibility to earn money for livelihood, Be a seller of groceries, be a street vendors, work to serve as house maid, be a worker of all kind in repairing house, be a gardener in an elite housing, many other jobs attracting people to live in urban.
3. Live in urban for continuing their study to higher education levels. In rural are schools but up to Senior High School. Better universities are in city or town, even the best senior high school is in urban area. Parents who want their children to be educated in best or favorite high school have to send their children live in urban.
4. Other facilities as complete/advanced facility for health/hospital, business agents, and many other are available in urban. They are part of benefit of living in urban

. The mayor of a city will, of course, include in the planning the development of all sectors representing the prime services to citizen. Development programs planned in an urban area are easily fulfilled because they are supported with the budget. This budget is calculated in accordance with financial potential in the city or town. And the achievement of budget will theoretically, easier achieved in urban area than in rural area. Some causes on the achievements are apparent, urban citizen are mostly having the regular earning. They will agree without much a do to pay tax. When tax officer came to collect or more advanced system the tax-payer are coming to tax office in the end of year to pay tax (Anas, 1982)

Revenue from tax, and others revenues, the government executes the planning. Public facilities are built or maintained as to properly function to serve and to facilitate the citizens. All public facilities are available for public in urban. Health facility as hospitals, health centers, Sport centers, education facility consisting of from kinder garden, elementary, high school till higher education are provided and maintained. Economic and business facilities as Banks, markets of all kinds are available, Transportation and communication facilities are functioning and their regulation are managed intensively in urban (Nurmalina. 2007)

Services for social purposes are organized with updated system and links to others relations as to employment provision for those who face the employment problem, and to hospital and health care center or rehabilitation center for those who requires further handling after the social services officer indicates them for further treatments. Recreation and tourist resorts are managed with advanced management to give prime satisfactory services to communities, and in return they are wealthy and fertile source of generating income for the government. In the recreation center are built all kinds of amusements and attractions. In short, all living facilities from traditional of simple facility to luxury are available in urban.

With this facilities of life of urban, people in rural area are migrating to urban. In the histories of growing cities, the happening of this translocation of people have been taking place for centuries. May be in the United States cities this urbanization have taken place since the 19th or even in the 18th centuries. However in the newly independent countries as in Indonesia, as for the people of the age up to 60 years old witness the urbanization. This elderly people will say, when we were children (in 1960-1970) the town of Bandung was very quite even in the rush hours and in mid-day. We rode bicycles in a group, we rode side by side, and there were no a single motor-cycle over-run us, and there were very-very rare old var of Chevrolet trademark horned me to ask its way. That time the street was just 4 meters wide, and in the afternoon we could change the street to be a football field. Children were playing football in the street.

Now Bandung has turned to be a big city with population of 5-8 folds as in the decades when we were children. Traffic jams is the daily scenery and very familiar to the people in this city.

We have 5 to 9 children, and my village is now very crowded with people coming from rural. They are employees of governmental office services, workers in factories, retailers and street vendors, and many others uncertain employment (underemployment or totally unemployment). I feel my village is overcrowded, and we decided to move to rural area in 1990s. However my rural area is now growing to be a suburb area of Great Bandung city. Slow but sure this village in rural area will be a new suburb of Great Bandung city. There are benefit of facilities provided by urban government, but we will lost the traditional customs and value we used to be in life.

The photos are near my village, they are built to provide a rent apartment for students of universities and colleges opening branches in the suburb, their main campuses are in Bandung city. The universities and college are: Padjadjaran University (UNPAD), Bandung Institute Of Technology (ITB), Indonesian Cooperative Institute (IKOPIN), and the College of Public Administration IPDN). Formerly in this suburb area was WinayaMukti University (UNWIM) this is administered by Provincial Government of West Java. UNWIM was moved to new location in Sumedang district.

Subandi (2011) stated that after technology came to rural, in this case the agricultural technology, only a small number of men are requires to till land and do agricultural activities. Rural unemployment has insisted many people to go outside rural for seeking jobs. Being an urban people this unskilled people can choose any jobs and earning activity. In urban there are

many possibility to earn money for livelihood, Be a seller of groceries, be a street vendors, work to serve as house maid, be a worker of all kind in repairing house, be a gardener in an elite housing, many other jobs attracting people to live in urban.

C. Conclusion.

In the short explanation above, it is recognized that city government build and provide infrastructure and public facilities for the citizen or people living in the urban area. It can be made a list of benefit for citizen and people living in urban, among other are:

1. Some but not many, people who feel unsafe live in rural area due to security ration. This kind of people who have a belief not the same with the belief of the majority in the rural. Primordial belief in rural is sensitive case, some cases is prove the security officer (police) and rural figure person is difficult to control this case. While in city life or urban area, people is rather indifferent in the primordial cases.
2. Live in urban for continuing their study to higher education levels. In rural are schools but up to Senior High School. Better universities are in city or town, even the best senior high school is in urban area. Parents who want their children to be educated in best or favorite high school have to send their children live in urban.
3. Other facilities as complete/advanced facility for health/hospital, business agents, and many other are available in urban. They are part of benefit of living in urban.

As people of moderate in thinking the advancement of tradition towards better life is accomodated by all.

References

Alberti, M. and Waddell, P. 2000. An integrated urban development and ecological simulation model. *Integrated Assessment*, 1(3): 215–227.

Anas, A. 1982. *Residential location markets and urban transportation: Economic theory, econometrics, and policy analysis with discrete choice models*, New York: Academic Press.

Anas, A. 1987. *Modeling in urban and regional economics*, New York: Harwood Academic.

Blizzard, M. 1996. *Creating better communities: The LUTRAQ principles*, Tigard, OR: Sensible Transportation Options for People (STOP).

Calthorpe, P. 1983. *The next American metropolis: Ecology, community and the American dream*, New York: Princeton Architectural Press.

Downs, A. 1994. *New visions for metropolitan America*, Washington, DC: Brookings Institution.

Burkey, S. 1993. *People First; A Guide to Self-Participatory Rural Development*. London: ZED.

Henderson, W. 2007. *Rural Urban Inequality in Asia*. *CAPSA Flash, Volume 5/9 September 2007*. UNESCAP-CPSA. Bogor.

IFPRI and ADB, 2007. *Agricultural and Rural Development for Reducing Poverty in Asia" In Pursuit of Inclusive and Sustainable Growth*. IFPRI, Washington D.C. USA and ADB, Metro Manila.

Mellor, J.W., 1976. *The New Economic of Growth: A Strategy for India and The Development Modernization (Menggerakkan dan Membangun Pertanian. Terjemahan)*. Penerbit Yasaguna, Jakarta.

Nurmalina R. 2007. *Model Neraca Ketersediaan Beras yang Berkelanjutan untuk Mendukung Ketahanan Pangan Nasional [disertasi]*. Bogor: Program Studi Ilmu Pengelolaan Sumberdaya Alam dan Lingkungan Sekolah pasca sarjana, Institut Pertanian Bogor.

Padel, S. 2001. *Conversion to Organic Farming A Typical Exampel of The Diffusion of A Innovation?. Sociologia Ruralis, Vol. 41 (1)*. European Society for Rural Sociologia ISSN 0038-0199.

Rogers, Everett M., and F. Floyd Shoemaker, 1962. *Communication of Inovations a Cross-Cultural Approach (Secpnd Edition)*. The Free Press A. Division of Macmillan Publishing Co. Inc., London.

Subandi, M. (2012). Several Scientific Facts as Stated in Verses of the Qur'an. *International Journal of Basic and Applied Science*. Vol. 01 (01): 60-65.

Subandi, M . and Abdelwahab M. Mahmoud. 2014. Science As A Subject of Learning in Islamic University. *Jurnal Pendidikan Islam*. . Vol. 1, No. 2, December 2014 M/1436 H.

Subandi, M (2011) .*BudidayaTanaman Perkebunan*. Buku Daras. Gunung Djati Press.

Subandi, M (2014). *Mikrobiologi, Kajian dalam Perspektif Islam*. Edisi Revisi. PT. Remaja Rosdakarya. Bandung. Pp.234+xxvi.