



Munich Personal RePEc Archive

Economic rationality under cognitive load

Drichoutis, Andreas C. and Nayga, Rodolfo

Agricultural University of Athens, University of Arkansas

20 August 2017

Online at <https://mpra.ub.uni-muenchen.de/81111/>
MPRA Paper No. 81111, posted 04 Sep 2017 15:41 UTC

Economic rationality under cognitive load *

Andreas C. Drichoutis^{†1} and Rodolfo M. Nayga, Jr.^{‡2,3,4}

¹Agricultural University of Athens

²University of Arkansas

³Norwegian Institute of , Bioeconomy Research

⁴The National Bureau of Economic Research

First Draft: August 20, 2017

Abstract: Economic analysis assumes that consumer behavior can be rationalized by a utility function. Previous research has shown that some decision-making quality can be captured by *permanent* cognitive ability but has not examined how a *temporary* load in subjects' working memory can affect economic rationality. In a controlled laboratory experiment, we exogenously vary cognitive load by asking subjects to memorize a number while they undertake an induced budget allocation task (Choi et al., 2007a,b). Using a number of manipulation checks, we verify that cognitive load has adverse affects on subjects' performance in reasoning tasks. However, we find no effect in any of the goodness-of-fit measures that measure consistency of subjects' choices with the Generalized Axiom of Revealed Preferences (GARP), despite having a sample size large enough to detect even small differences between treatments with 80% power. Our finding suggests that researchers need not worry about economic rationality breaking down when subjects are placed under temporary working memory load.

Keywords: Cognitive load, rationality, revealed preferences, working memory, response times, laboratory experiment

JEL codes: C91, D03, D11, D12, G11

*We would like to thank Cary Deck and Salar Jahedi for sharing their zTree implementation of cognitive load manipulation; Dan Burghart, Jan Heufer, Per Hjertstrand, Shachar Kariv, Daniel Martin and Bart Smeulders for sharing their data and codes; Dafni Koletti and Antigoni Patso for helpful research assistance. Approval for the research was provided by the Institutional Review Board of the University of Arkansas (#16-11-226) and the Board of Ethics and Deontology of the Department of Agricultural Economics & Rural Development at Agricultural University of Athens (2/2016).

[†]Assistant Professor, Department of Agricultural Economics & Rural Development, Agricultural University of Athens, Iera Odos 75, 11855, Greece, e-mail: adrihout@aua.gr.

[‡]Distinguished Professor and Tyson Endowed Chair, Department of Agricultural Economics & Agribusiness, University of Arkansas, Fayetteville, AR 72701, USA, and Adjunct Professor, Norwegian Institute of Bioeconomy Research, Korea University, and NBER, tel:+1-4795752299 e-mail: rnayga@uark.edu.

1 Introduction

Economic analysis assumes that consumer behavior can be rationalized by a utility function. The economic rationality assumption is by now well understood and described by the core axioms of revealed preferences theory (Afriat, 1967; Varian, 1982). Revealed preferences theory also provides the tools to test whether any given data set violates those axioms and how severe such violations might be.

Choi et al. (2014) advance the view that heterogeneity in choices may be driven (on top to other factors) by differences in decision-making ability; that is, the choices that some people actually make may be different from the choices they would make if they had the skills or knowledge to make better decisions. Thus, limited decision-making ability may also produce sub-optimal choices indicative of low decision-making quality. Choi et al. (2014) define decision-making quality in terms of whether observable behavior is consistent with the utility maximization model and explore, among others, the correlation of economic rationality with measures of cognitive ability (i.e., the Cognitive Reflection Test - CRT by Frederick (2005)). The results of their experiment suggest that the CRT captures some decision-making ability related to decision-making quality.

We revisit this issue but instead of relying on correlational measures of cognitive ability, we go one step further by exogenously impairing subjects' cognitive resources in a laboratory experiment. We do this by requiring subjects to memorize numbers of different lengths while they are making choices. Our experimental treatment is designed to reduce availability of cognitive resources for subsequent tasks. Imposing a burden on working memory has been shown to have adverse effects on performance in a variety of tasks that involve logic or reasoning (see Deck and Jahedi, 2015, and citations therein). Deck and Jahedi (2015) based on an extensive review of the literature note that overall, increasing cognitive load leads to '... poorer reasoning and math performance, more risk-aversion, and more impatient choices, although the evidence is mixed for each of these'.

Specifically, Deck and Jahedi (2015) find in their experiment that higher cognitive load reduces performance in math problems, leads to more risk-averse behavior, more impatience over money, and a higher likelihood to anchor but find no evidence of cognitive load effects on impatience or unhealthy snack choice. Similarly, Benjamin et al. (2013) and Gerhardt et al. (2016) find that a cognitive load manipulation increases risk aversion. Many other studies that are reviewed in Deck and Jahedi (2015) are exploring cognitive load in relation to math ability and logic, risk, intertemporal choice, food choice, generosity, strategic behavior etc.

The closest to our study is the experiments in Castillo et al. (2017) which employ a sleepiness manipulation through circadian mismatch. Circadian mismatch has been shown to be associated with impairment of cognitive abilities and is another way to temporarily deplete cognitive

resources. To accomplish their manipulation, they recruited only young men and women who were validated morning- and evening-type individuals. Subjects were then randomly assigned to a session at a preferred time of the day relative to their diurnal preference (circadian matched) or at a non-preferred time (circadian mismatched) and they then chose budget allocations using the [Choi et al. \(2007a,b\)](#) allocation task. [Castillo et al. \(2017\)](#) find that adherence to the generalized axiom of revealed preference (GARP) is identical between mismatched and matched participants.

One possible caveat with the [Castillo et al. \(2017\)](#) study is that their manipulation checks rely on self-reported measures to demonstrate that their manipulation concurrently affects other variables of interest in the expected direction. As such, the evidence of a successful manipulation is fairly unconvincing and [Castillo et al. \(2017\)](#) rightfully acknowledge ‘...the complexity of trying to separately manipulate circadian effects from sleep level effects in an experimental design of this nature’.

In our study, in order to explore consistency with economic rationality, we employ the [Choi et al. \(2007a,b\)](#) induced budget allocation task. This particular allocation task allows elicitation of many decisions per subject from a wide variety of budget lines. In addition, the frequent shifts in income and relative prices are such that budget lines cross frequently and so the variety of budget lines produces data that can be used to test for consistency with revealed preferences theory ([Choi et al., 2007a](#)). Our cognitive load manipulation, a number memorizing task, is designed along with several incentivized manipulation checks that undoubtedly show its effectiveness. We find that subjects’ performance in demanding reasoning tasks is affected when under high cognitive load but less so in tasks that require low or no reasoning at all. We employ several goodness-of-fit measures to measure consistency with economic rationality given the trade-offs involved with using one over another, and generally find that cognitive load does not affect economic rationality i.e., a null effect. We also show that our study was sufficiently powered to detect even small effects, which gives us enough confidence to conclude that our null effect is genuine and not the result of a small sample size.

The next section describes our experimental design with particular emphasis on the cognitive load manipulation and the induced budget line allocation task. [Section 3](#) describes the various goodness-of-fit measures we use in this study to measure consistency with economic rationality according to revealed preferences theory. In [Section 4](#) we showcase the null effect of cognitive load on economic rationality after first establishing the success of the treatment based on a series of manipulation checks. We also complement our results with sample size calculations to show that our null result is likely not a false negative.

2 Experimental design

In May 2017, we recruited 178 subjects from the undergraduate population of the Agricultural University of Athens in Greece to participate in a computerized experiment at the Laboratory of Behavioral and Experimental Economics Science (LaBEES-Athens). Subjects were recruited using ORSEE (Greiner, 2015) and participated in 10 sessions of 14 to 25 subjects. All sessions started from 10 am and concluded by 2 pm. Although subjects participated in group sessions, there was no interaction at any point between subjects and group sessions only served as a means to economize on resources. In fact, given that we timed every decision stage of our experiment (response times are discussed in Section 2.4), we chose to run individual instances of zTree (Fischbacher, 2007) to avoid any time lags in communication between computers and allow every participant to proceed at their own pace. Although subjects knew from the very beginning that they could move through the screens at their own pace, they were also told that they could leave the room *only* when all the subjects have made their decisions for reasons related to collection of all data and the printing of the individual receipts. This was also done to slow down the pace of subjects who just wanted to minimize their stay in the lab. Subjects were randomly split into two within-subjects treatments and each subject was only exposed to one of them: 87 subjects experienced the high cognitive load treatment (HCL) and 91 subjects experienced the low cognitive load (LCL) treatment.

Upon arrival, subjects were given a consent form to sign and were randomly seated to one of the PC private booths. The instructions were computerized, interactive and included thorough examples for each type of task that would appear in the experiment (see Experimental Instructions section in the Electronic Supplementary Material). Subjects were specifically instructed to raise their hand and ask any questions in private and that the experimenter (one of the authors) would then share his answer with the group. Subjects received a show-up fee of €3 and a fee of €4 for completing the experiment so that each subject would receive €7 with certainty upon successful completion of the experiment, which lasted about an hour. They could also earn additional money during the experiment (described momentarily), and so the average of total payouts was €13.05 (S.D.=3.64, min=7, max=20.53).

In total, subjects played 75 periods and in every period they went through one of the following decision tasks: 1) an induced budget line allocation task, 2) an arithmetic (addition) task, 3) an arithmetic (multiplication) task, and 4) a click-a-button task. The budget allocation task was repeated for 60 consecutive periods (reasons for this number of repetitions is explained in Section 2.2) and every other decision task was repeated for 5 consecutive periods (thus, 1 task \times 60 periods + 3 tasks \times 5 periods = 75 periods). Subjects were not provided with any kind of feedback between periods for any of the tasks. Each subject was randomly exposed to one of the possible orders of the tasks, however, the induced budget task was always placed either at

the very beginning of the experiment or at the very end. Figure 1 shows sample screen shots illustrating the various decision tasks.

Subjects were specifically instructed to remove from their desks anything that could be used to take notes (e.g., cellphones, paper, pen, pencil etc.). This was part of their instructions (see Experimental Instructions - Screen 1 at the Electronic Supplementary Material) but they were also reminded orally by the experimenter before the start of the experiment. In addition, two research assistants and the experimenter supervised the lab to make sure that this would be enforced during the experiment so that subjects could not cheat in any way at the memorization task by, for example, typing the number they had to memorize in an intermediate screen. This also affected the way we designed all other tasks in that we avoided having input boxes (which subjects could use to temporarily type the number they had to memorize) and only included buttons as input items. Shortcut keys for copy-paste (i.e., ctrl+c and ctrl+v) were disabled in all computers during the experiment.

2.1 Cognitive load manipulation

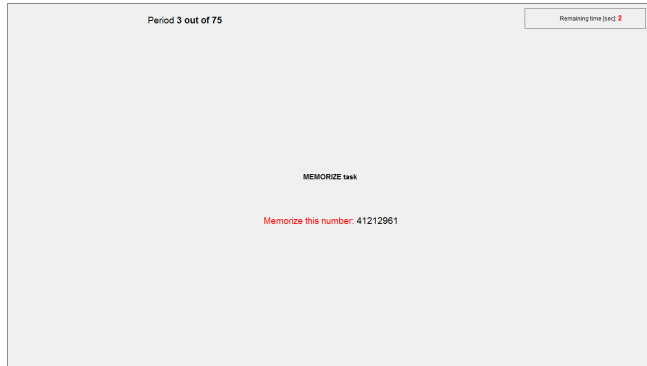
To manipulate cognitive load, we implemented an incentivized number memorization task (Benjamin et al., 2013; Deck and Jahedi, 2015).¹ Specifically, in each period and just before the main decision tasks described above, a number appeared for four seconds on the participant's computer screen (see Figure 1a and 1b for sample screen shots). Subjects were then asked to keep this number in their memory and recall it after the main decision task (see Figure 1g for a sample screen shot). If they recalled (typed) the number correctly within a time limit of ten seconds, their memorization payoff for the period was €9.² Otherwise it was zero. Subjects in the HCL treatment were shown 8-digit numbers while subjects in the LCL treatment were shown 1-digit numbers to memorize. Numbers to memorize were drawn randomly in each period and independently from other subjects.

¹Benjamin et al. (2013) note that requiring participants to memorize a string of numbers while they are engaged in the task of interest, is a common cognitive load manipulation in the psychology literature (e.g., Hinson et al., 2003; Shiv and Fedorikhin, 1999).

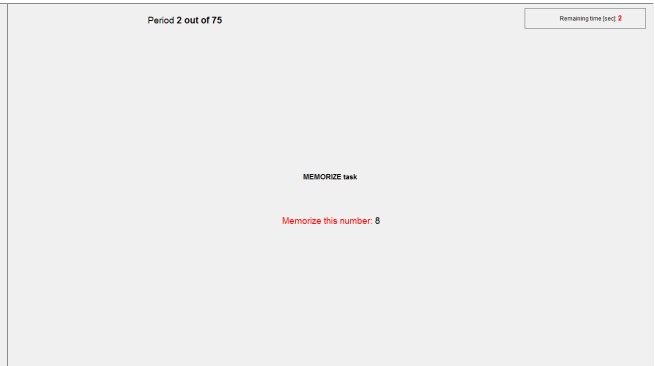
²Subjects would see a counter counting down from 9 seconds but the counter took an extra second before countdown initiation so that actual count down time was 10 seconds. Similarly, in the memorization task the counter would start counting down from 3 although the counter took an extra second before doing so, so that the number was always displayed for 4 seconds.

Figure 1: Sample screen shots of various tasks

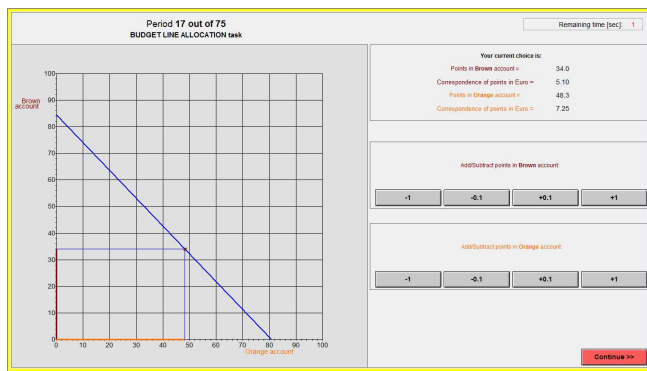
(a) Memorize number in the HCL treatment



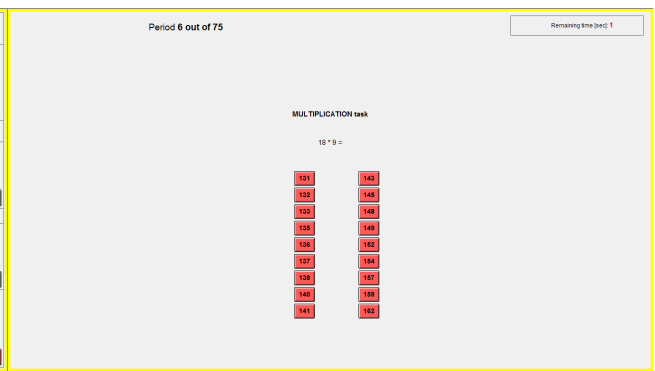
(b) Memorize number in the LCL treatment



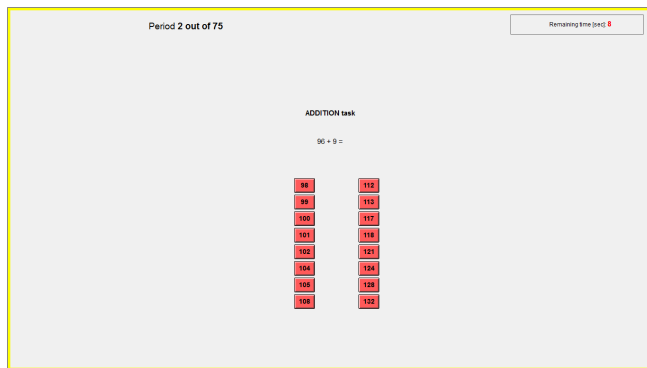
(c) Induced budget allocation task



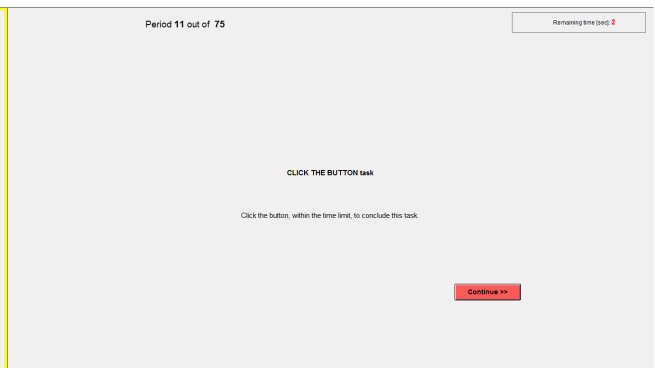
(d) Multiplication task



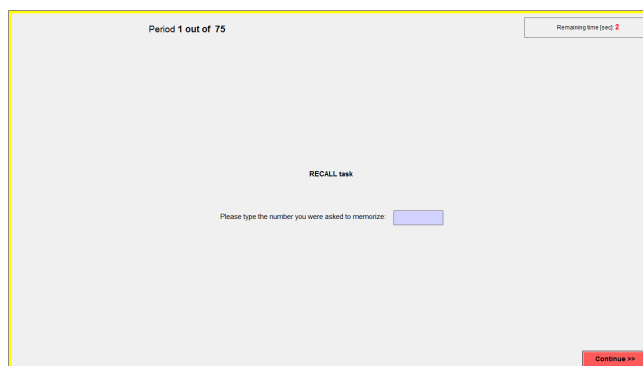
(e) Addition task



(f) Click-a-button task



(g) Recall number



2.2 The induced budget line allocation task

We used the graphical representation of simple portfolio choice problems of [Choi et al. \(2007b\)](#) where subjects are asked to select a bundle of commodities from a standard budget set. Subjects saw a graphical representation of a budget line on the computer screen and made choices on the budget line through a simple point-and-click action (see [Figure 1c](#)). In our implementation of the interface in zTree, we also allowed subjects to make refined grid choices by using buttons that could add/subtract very small amounts in the commodity space in an interactive way.

This particular interface allows elicitation of many decisions per subject from a wide variety of budget lines which produces a very rich individual-level dataset. The shifts in income and relative prices are such that budget lines cross frequently and the variety of budget lines produces data that have been used in the literature to test if the Generalized Axiom of Revealed Preferences (GARP) holds ([Choi et al., 2007a](#)). If GARP holds, then individual’s choices are consistent with maximization of a well-behaved utility function.³ [Choi et al. \(2014\)](#) use this consistency of choices with economic rationality as a measure of decision-making quality (economic rationality defined by having a complete and transitive preference ordering).

In the induced budget line allocation task, subjects were asked to choose an allocation of points (constrained to lie on the budget line) between the ‘Orange account’ and the ‘Brown account’ (corresponding to the horizontal and vertical axis, respectively) with the understanding that one of the accounts would be randomly selected at the end of the experiment and that each account was equally likely. Each task started with the computer selecting a budget line randomly from the set of budget lines that intersect with at least one of the axis at 50 or more points and the other axis at 30 or more points. No intercept could exceed 100 points. The budget lines selected were independent between periods and between subjects (the full set of budget lines shown to each subject can be found in the Electronic Supplementary Material). The pointer was set by default to the origin, if subject had not yet made a choice. Although a timer was implemented for consistency with the other tasks, subjects were not forced out of the task if they had not made a choice. The exchange rate between points and Euros was set to 1 point = €0.15.

The number of periods in the induced budget line allocation task was determined based on [Bronars’s \(1987\)](#) power measure of revealed preferences tests. [Bronars \(1987\)](#) adopted [Becker’s](#)

³ [Varian \(1988\)](#) shows that if we only observe demand for a subset of goods (as in a typical laboratory experiment), then GARP is no longer necessary. Therefore, testing a data set for consistency with GARP characterizes utility maximization only when the demand for all available goods is observed. Otherwise, the utility maximization hypothesis imposes no restrictions on observable data. However, a theorem in [van Bruggen and Heufer \(2017\)](#) shows that consistency of the observed data with GARP is still a necessary and sufficient condition for utility maximization over all observed and unobserved goods, if unobserved prices and expenditure remain constant (a condition which is naturally satisfied in the lab, as we can plausibly assume that the world outside the lab remains constant during an experiment).

(1962) notion of irrational behavior where the representative consumer is assumed to choose consumption bundles randomly from her budget hyperplane. We randomly generated consumption data for 50,000 hypothetical subjects who randomize uniformly among all allocations on each budget line and repeated this procedure over 10 to 60 budgets tasks with a step of 10. We then calculated Afriat’s Critical Cost Efficiency index (CCEI) which measures the amount by which each budget constraint must be relaxed in order to remove all violations of GARP (Afriat, 1972; Varian, 1993, 1990) (see also section 3.1 for a detailed description of this index). Varian (1993) proposes a 95% efficiency level as the critical level for “sentimental reasons [sic]”. Table 1 shows that increasing the number of budget tasks from 10 to 60 significantly reduces the chance that random behavior will pass the GARP test. With 60 budget tasks, only 2 out of 50,000 hypothetical subjects have a CCEI larger than 0.95. The number of repetitions is an important detail in our design because under cognitive load, there might be a tendency for subjects towards random choice. Therefore, we wanted to make sure that by design, there is a very low chance of random behavior passing as consistent with GARP. Given the trade-off involved with adversely affecting the duration of any given session when increasing the number of periods, we opted to repeat the induced budget allocation task for 60 periods.

Table 1: Number of budget tasks and Afriat’s Critical Cost Efficiency index (CCEI) for randomly generated consumption data

N of budget tasks	Average CCEI	min CCEI	max CCEI	N of Subjects with CCEI \geq 0.95	% of Subjects with CCEI \geq 0.95
10	0.957	0.655	1	32,796	65.59
20	0.891	0.600	1	8,755	17.51
30	0.848	0.581	0.999	1,504	3.01
40	0.819	0.589	0.992	197	0.39
50	0.797	0.579	0.977	32	0.06
60	0.780	0.579	0.963	2	0.004

2.3 Arithmetic and click-a-button tasks

The arithmetic and click-a-button tasks were used as manipulation checks in order to identify whether the number memorization task actually manipulates cognitive load. The tasks were meant to differ in terms of task difficulty in order to assess the severity of the manipulation on decision making.

In the multiplication arithmetic task, subjects had to multiply a one-digit integer $m_1 \sim U\{5, \dots, 9\}$ and a two-digit integer $m_2 \sim U\{13, \dots, 19\}$. In the addition arithmetic task, subjects had to add a one-digit integer $a_1 \sim U\{1, \dots, 9\}$ and a two-digit integer $a_2 \sim U\{11, \dots, 99\}$.⁴

⁴The addition and multiplication tasks were taken verbatim from Deck and Jahedi (2015).

Subjects had to indicate their answer by clicking the right choice from a list of randomly determined 16 possible choices that were shown in two columns in an ordered manner; i.e., from low values to high values (see Figures 1d and 1e). The correct answer was set randomly to one of the buttons.

In the click-a-button task, subjects simply had to click a button. The arithmetic and click-a-button tasks were set with a time limit of 11 seconds after which subjects would be forced out if they had not made a decision.⁵ If subjects performed any of the tasks described above correctly, their payoff for the period was €7. Otherwise it was zero.

The tasks varied in terms of difficulty in the following manner: multiplication \gg addition \gg click-a-button. Our intention with this manipulation check was to see whether memorizing a large number affects ability to perform difficult tasks (like multiplication and addition) but not ability to perform simple tasks (like clicking a button). We would expect that performance in the multiplication task, a much harder task than addition, would be more adversely affected under cognitive load.

2.4 Response times

Response times have not been recorded and analyzed in previous studies that involved cognitive load manipulation (e.g., Benjamin et al., 2013; Deck and Jahedi, 2015) but have been given prompt attention in more recent studies (Gerhardt et al., 2016). Response times are particularly useful if one adopts the dual-system approach view in decision making whereby there are two distinct kinds of reasoning widely known as ‘System 1’ and ‘System 2’ (Stanovich and West, 2001). The two systems differ in terms of working memory capacity, consciousness in reasoning, automaticity, speed etc (Kahneman, 2011). Therefore, response times could serve as an indicator of which system is dominating as well as an as an indicator of the difficulty of a task (Gerhardt et al., 2016).

By this account, our cognitive load manipulation (memorizing a number) is expected to load the reasoning system (‘System 2’). Hence, any decision that the subjects perform when under cognitive load should be the outcome of ‘System 1’ which is the impulsive and intuitive system. If subjects really need to use ‘System 2’ to make a reasoning type decision, then they would need to really try hard to engage this system, which would be reflected in their response time.

To achieve a high precision in recorded times, each computer run an individual session of zTree/zLeaf for each subject, which factored out any latency due to network/computer communication.

⁵Subjects would see a counter counting down from 10 seconds but the counter took an extra second before countdown initiation so that actual count down time was 11 seconds.

2.5 Measured cognitive ability

The cognitive load manipulation allowed us to vary the working-memory (WM) load of subjects while they completed other decision tasks. Working memory capacity has been shown to be strongly correlated with general cognitive ability (Colom et al., 2004; Gray et al., 2003). Therefore, before we apply the cognitive load manipulation, we first measured the cognitive ability of all subjects using the Raven’s Standard Progressive Matrices (RSPM) test which is used to assess mental ability associated with abstract reasoning and is considered a nonverbal estimate of fluid intelligence (Gray and Thompson, 2004). The original RSPM test consists of 60 items and requires considerable time to complete. In this study, we used an abbreviated 9-item form of the RSPM test (Bilker et al., 2012) consisting of items 10, 16, 21, 30, 34, 44, 50, 52, 57 from the original 60-item Raven’s test. Subjects were not provided with any feedback regarding their performance in the RSPM test. The RSPM test allows us to sum correct responses and form a measure of cognitive ability that we can use to assess the effect of WM capacity on behavioral tasks’ performance.

2.6 Payoffs and payments

Participants were paid for one randomly drawn period (out of 75 periods) and for only one of the (randomly determined) tasks of this randomly selected period (i.e., either the memorization task or the decision task; depending on the period that was randomly drawn, the decision task could be either the induced budget line task or the addition task or the multiplication task or the click-a-button task). This was clearly explained beforehand in the instructions (see Experimental Instructions - Screen 2 in the Electronic Supplementary Material).

Similar to Deck and Jahedi (2015), we set the payoff associated with memorization (€9) higher than the payoff for the multiplication task (€7), the addition task (€7) and the click-a-button task (€7), so that participants (even the ones with limited working memory capacity) would devote their main attention to memorization. This increased the likelihood that the cognitive load manipulation would be effective. Since the induced budget allocation task did not involve certain payoffs, we calculated the expected payoff for the maximum induced budget line (i.e., cutting both axes at 100 points) and then calculated the expected payoff for a subject that either allocates everything to one account or splits points between both accounts. Given an exchange rate of 1 point = €0.15, this expected payoff amounts to €7.5, which is very close to the payoff of the other decision tasks.

Subjects received feedback about the randomly selected period and task only after they made all their decisions. Monetary payouts were paid via bank transfer to subject’s preferred bank account.⁶

⁶Money was paid via the ‘Pay a friend’ service of the bank ‘Eurobank’ which allows transferring money to

3 Goodness-of-fit measures for rationality

We measure economic rationality in terms of whether our experimentally generated data can be rationalized by a utility function. We know by revealed preferences theory (Afriat, 1967; Varian, 1982) that individual’s choices can be rationalized by a utility function, if and only if the data satisfy the Generalized Axiom of Revealed Preferences (GARP). GARP posits that if allocation \mathbf{x}^i is revealed preferred to \mathbf{x}^j , then \mathbf{x}^j is not strictly directly revealed preferred to \mathbf{x}^i or that if $\mathbf{p}^i \mathbf{x}^i \geq \mathbf{p}^i \mathbf{x}^j$ then it cannot be that $\mathbf{p}^j \mathbf{x}^j > \mathbf{p}^j \mathbf{x}^i$ (Varian, 1982, p. 947).

The problem with empirically testing GARP is that the test is exact: data can either satisfy GARP or not; i.e., the test allows no errors in measurement or choice so that a single choice is enough to render a large choice set incompatible with rationality. Instead, goodness-of-fit measures allow us to quantify the extent of such violations. Below we briefly summarize some of these measures and describe how we went about it with our data.

3.1 Afriat’s Critical Cost Efficiency index (CCEI)

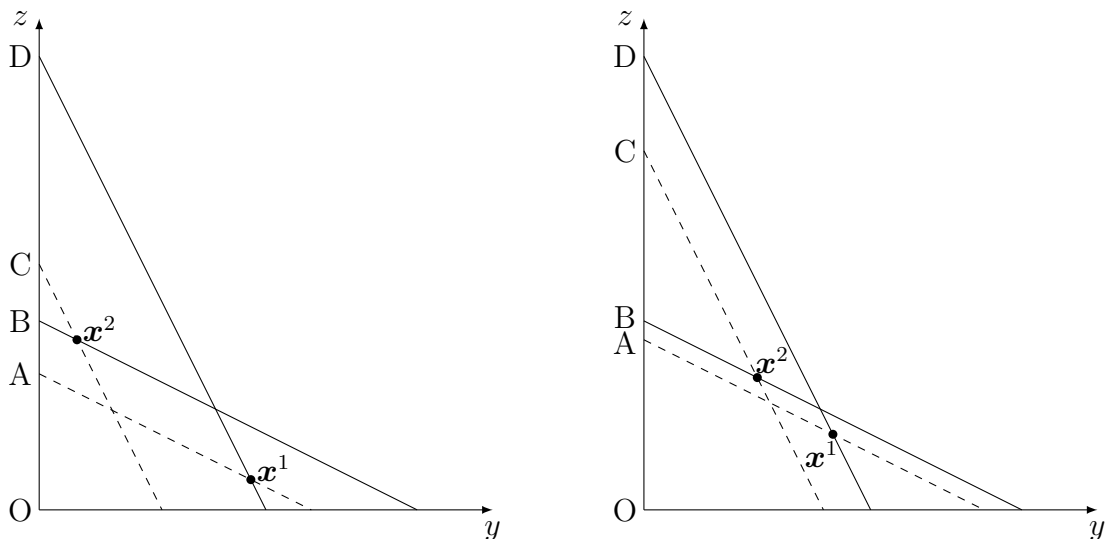
Afriat’s Critical Cost Efficiency index (CCEI) measures the amount by which each budget constraint must be relaxed in order to remove all violations of GARP (Afriat, 1972; Varian, 1993, 1990). More formally, for $0 \leq e \leq 1$ define the directly revealed preference relation $\mathbf{x}^j R^d(e) \mathbf{x}^i \Leftrightarrow e \mathbf{p}^j \mathbf{x}^j \geq \mathbf{p}^j \mathbf{x}^i$. If $R(e)$ is the transitive closure of $R^d(e)$, Afriat’s CCEI, e^* , is the largest value of e such that the relation $R(e)$ satisfies GARP. Andreoni et al. (2013) call this version of Varian’s (1993) GARP as L-GARP(e) (where ‘L’ is for ‘Lower’) defined as: $\mathbf{x}^j R(e) \mathbf{x}^k \Leftrightarrow \mathbf{p}^k \mathbf{x}^j \geq e \mathbf{p}^k \mathbf{x}^k$ for $e \leq 1$. If $e^* = 1$, there is no violation of GARP while the larger the deviation from 1, the more a set of data fails to satisfy GARP. Researchers often follow Varian’s (1993) suggestion to use the 95% efficiency level as the critical level.

To illustrate the formulation of Afriat’s CCEI, consider Figure 2 where a simple revealed preference violation is depicted for the bundles \mathbf{x}^1 and \mathbf{x}^2 . Bundle \mathbf{x}^1 is revealed preferred to bundle \mathbf{x}^2 and vice versa. The left figure depicts a more severe violation than the right figure. We can remove this violation by moving the budget line from B to A or from D to C. Afriat’s CCEI is related to the smallest shift we have to make to remove the violation, so in this case CCEI will be equal to OA/OB. Note that OA/OB will be closer to 1 in the right figure than in the left figure which indicates a less severe violation.

Technically, Afriat’s CCEI requires the computation of the transitive closure and there have been two approaches used in the literature for this. One of the approaches uses Warshall’s (1962) algorithm as described in Varian (1982, 1996). The other approach computes the matrix

subject’s preferred bank account without knowing subject’s account number, only by using an email address or a mobile phone number. All transactions were ordered in the same day of the sessions and every transaction was completed within a maximum of one business day. All transactions went through. The service is similar to the *Zelle* service operated by the Wells Fargo bank in the United States.

Figure 2: A simple revealed preference violation



Notes: Bundle x^1 is directly revealed preferred to bundle x^2 and vice versa. The left graph indicates a more severe violation than the right graph.

power of the direct revealed preferences matrix (also described in [Varian, 1996](#)). In this paper, we used both approaches and find that the computed CCEI is largely the same with the use of either method (the correlation coefficient between the two indexes is 0.97).⁷

3.2 The Houtman-Maks Index (HMI)

The [Houtman and Maks \(1985\)](#) index follows a different approach and measures the maximal number of observations in the observed sample consistent with rational choice. An advantage is that, if desired, the researcher can restrict the analysis to choices that are consistent with economic rationality.

Older attempts to calculate the HMI have cited computational intensity as the biggest drawback of the method (e.g., [Choi et al., 2007a](#)). More recently, [Heufer and Hjertstrand \(2015\)](#) introduced simple and efficient algorithms for computing the HMI: [Gross and Kaiser's \(1996\)](#) combinatorial algorithm and an algorithm based on solving a mixed-integer programming problem. As noted in [Gross and Kaiser \(1996\)](#), their algorithm sometimes fails to provide a maximal subset and only provides a lower bound. We confirm that this is sometimes the case with our data and so we based the HMI calculation on solving the mixed-integer programming problem as set up in [Heufer and Hjertstrand \(2015\)](#).⁸

⁷We used the codes from [Dean and Martin \(2016\)](#) for the application of the [Warshall \(1962\)](#) algorithm to our data and the codes from [Burghart et al. \(2013\)](#) for the power matrix approach.

⁸More specifically, we further analyzed the retained choices from the two algorithms using Afriat's CCEI and found that for the mixed integer programming algorithm, all retained choices satisfy GARP while for the [Gross and Kaiser \(1996\)](#) algorithm, retained choices for 5 out of 178 subjects do not satisfy GARP.

3.3 The Money Pump Index (MPI)

A drawback of the HMI is that the method flags observations that violate revealed preferences, even if they only violate it by a small amount. An alternative is the MPI which measures the severity of a violation in terms of a money metric (Echenique et al., 2011). This measure received its name from the idea that a consumer who violates GARP could be potentially exploited as a ‘money pump’. This is because an arbitrageur that knows the choices of a subject that violates GARP could follow the opposite purchasing strategy and resell the goods to the subject at a profit. Therefore, MPI is the amount of money that could be extracted from the consumer, expressed as a percentage of expenditure.

To illustrate the MPI, consider Figure 2 depicting a revealed preference violation. Assume a subject buys bundle \mathbf{x}^1 at prices \mathbf{p}^1 and bundle \mathbf{x}^2 at prices \mathbf{p}^2 . An arbitrageur would buy bundle \mathbf{x}^1 at prices \mathbf{p}^2 and bundle \mathbf{x}^2 at prices \mathbf{p}^1 and then resell bundle \mathbf{x}^1 at prices \mathbf{p}^1 and bundle \mathbf{x}^2 at prices \mathbf{p}^2 to the subject. The arbitrageur would then make a profit $mp = \mathbf{x}^1 * (\mathbf{p}^1 - \mathbf{p}^2) + \mathbf{x}^2 * (\mathbf{p}^2 - \mathbf{p}^1) = \mathbf{p}^1 * (\mathbf{x}^1 - \mathbf{x}^2) + \mathbf{p}^2 * (\mathbf{x}^2 - \mathbf{x}^1) = CD/OD + AB/OB$. The left graph in Figure 2 depicts a higher money pump cost than the right figure ($mp_{left} > mp_{right}$), rendering the violation more severe.

A practical difficulty in the computation of the MPI is that given multiple violations of revealed preferences, there will be a money pump cost associated with each violation. To summarize multiple money pump costs in a single metric, Echenique et al. (2011) proposed the use of the mean and median money pump costs as an aggregate MPI. Given the computational burden involved in computing these aggregate money pump costs, Echenique et al. (2011) suggested to instead compute approximations of the mean and median MPIs. However, these approximations focus on violations of revealed preference axioms that involve only a small number of observations (in Echenique et al. (2011) they report mean/median MPI for cyclic sequences of allocations of length up to 4).

Smeulders et al. (2013) proposed to measure the maximum and minimum MPIs for the most severe and the least severe violations, respectively, as easy-to-apply alternatives. The advantage is that max and min MPIs can be computed efficiently even for large datasets (i.e., defined over all violations). In this paper, we use the Smeulders et al. (2013) approach and calculated the min/max MPI for all possible violations.

3.4 The Minimum Cost Index (MCI)

The MCI, similar to MPI, is a money metric index which represents the minimum cost of breaking all revealed preference cycles in a data set (Dean and Martin, 2016) where ‘A revealed preference cycle is broken if a revealed preference relation is removed from that cycle and the cost of removing a revealed preference relation is measured by the monetary difference between

the chosen and non-chosen bundle that generated the relation'. The index combines features from the HMI and the MPI since it takes into account both the number and severity of revealed preference violations. In order to compare the MCI across subjects, there are two normalizations that can be applied; i.e., cost can be divided either by the cost to remove all relations from a data set (the sum of all relations) or by each subject's total budget. We use both normalizations in our paper.

4 Results

Before we analyze our data for treatment effects, we will first try to establish whether the effect from our experiment can be interpreted as causal. Economic experiments rely on the Neyman-Rubin model of causal inference (due to Neyman (his original work appeared in Polish in a doctoral thesis submitted to the University of Warsaw; for excerpts reprinted in English and some commentary see [Rubin, 1990](#); [Speed, 1990](#); [Splawa-Neyman et al., 1990](#)) and [Rubin \(1974\)](#)) which stipulates that by randomly assigning the treatments, the difference between the experimental and control units can be considered an unbiased estimate of the causal effect that the researcher is trying to isolate ([Rubin, 1974](#)). However, the comparison between two groups of units is valid only if the two groups have the same expectation in the distribution of all covariates which are potentially relevant for the treatment outcome. This can be ensured by the law of large numbers (LLN): enlarging the sample size, two randomly assigned groups will indeed be comparable since the sample average of individual characteristics in larger samples tends to become closer to the average of the population.

Typically, experimentalists use statistical tests (often called balance tests) to test for equality of various covariates between treatments. A failure to reject the null is interpreted as a good balance of observable characteristics between treatments and a success of the randomization process. However, many have pointed to the pitfalls of such balance tests ([Briz et al., 2016](#); [Deaton and Cartwright, 2016](#); [Ho et al., 2007](#); [Mutz and Pemantle, 2015](#)), a practice also characterized as superfluous and misleading in the CONSORT (Consolidated Standards of Reporting Trials) statement endorsed by prominent medical journals like BMJ and Lancet etc. ([Moher et al., 2010](#), pp. 17). Following [Deaton and Cartwright's \(2016\)](#) advice, we report instead the normalized difference in means ([Imbens and Rubin, 2016](#); [Imbens and Wooldridge, 2009](#)).

Table 2 reports the descriptive statistics for a few observable characteristics of our subjects. As evident, the means are very close between the two groups while the median values are identical. Table 2 also reports a normalized difference measure $|\bar{x}_1 - \bar{x}_2|/\sqrt{(s_1^2 + s_2^2)/2}$ where \bar{x}_j and s_j^2 ($j = 1, 2$) are the group means and variances, respectively. The normalized difference measure is a scale-free measure of differences in means scaled by the square root of the average of the two group variances. [Cochran and Rubin's \(1973\)](#) rule of thumb is that the normalized

difference should be less than 0.25 and [Imbens and Rubin \(2016\)](#) devote a full chapter to show that regression methods tend to be sensitive to the specification when normalized differences are large. As evident, the observable characteristics in our data pass this rule of thumb.

Table 2: Means of observable characteristics per treatment

	HCL	LCL	Normalized difference
Gender: Males	34.48%	31.87%	0.055
Household size	4.11 (1.04) [4]	4.30 (1.06) [4]	0.020
Age	21.33 (1.17) [21]	21.31 (1.35) [21]	0.173
Reference income	3.98 (1.49) [4]	4.23 (1.47) [4]	0.198
Raven test score	7.61 (1.43) [8]	7.32 (1.50) [8]	0.117
Raven test past experience	27.59%	32.97%	0.171

Notes: HCL (LCL) stands for the high (low) cognitive load treatment. Standard deviation in parenthesis. Median value in brackets. Reference income was measured on a scale from 1=‘Household’s economic position is very bad’ to 7=‘Household’s economic position is very good’ relative to the average national household income at €12,300.

4.1 Difficulty of the memorization task

We now turn into exploring if the variation in the difficulty of the memorization task was significantly different between treatments. The top panel in [Table 3](#) shows the frequency of correctly recalling the number in the memorization task (success rate) at the end of each period by treatment. The table shows success rate after each task and when combined over all tasks. When comparing between treatments, it is obvious that success rate in the HCL treatment was significantly lower. In fact, a χ^2 test rejects the null for all rows in the top panel of [Table 3](#) (p-value < 0.001) indicating that memorizing and correctly recalling an 8-digit number was significantly more difficult than memorizing and correctly recalling a 1-digit number. However, the difficulty of recalling the number varied depending on the intermediate task that was performed (while holding the number in memory). For example, correct recall was as low as 8.97% after the multiplication task and was as high as 36.72% after the induced budget line task in the HCL treatment. Success rates improved for the addition task and further improve for the click-a-button task, suggesting the progressive difficulty of the tasks as we move from the click-a-button task to the addition task and then to the multiplication task. A χ^2 test indicates that differences in success rate between tasks are statistically significant as well (p-value < 0.001) for both the HCL and LCL treatments.

A similar interpretation emerges if one looks at response times in the recall task (note that subjects had 10 seconds to type and submit their answer). The medium panel in [Table 3](#) shows how long it took subjects to recall (type in) the number they had memorized, irrespective of whether they gave a correct answer or not. Recorded times reflect the difficulty of the

number memorization task. It took around 7 seconds to type and submit an answer in the HCL treatment and only about 2.3 secs in the LCL treatment. All differences are statistically significant between treatments according to Kruskal-Wallis tests (p-value < 0.001). There is also significant variation between tasks. It took significantly longer for subjects to recall the number after the multiplication task than after the induced budget line task. Response times between tasks are also statistically significantly different according to Kruskal-Wallis tests for both the HCL and LCL treatments (p-value < 0.001).

The bottom panel in Table 3 shows the recall response times only for the subsample of subjects that correctly recalled the number. The picture is similar to what was discussed above, with response times reflecting the difficulty of the tasks in the sense that subjects spent a longer time to recall the number after a task that was intended to be more difficult. One interesting observation when we compare the bottom panel to the medium panel is that when subjects in the HCL treatment correctly recalled the number, it took them less time to do so, suggesting that spending more time trying to recall the number signified being less certain about the correct answer. In contrast, the differences are not significant under the LCL treatment when we compare the medium and bottom panels. This is probably because most of the subjects were able to correctly recall the 1-digit number most of the time.

Table 3: Success rate and mean decision time (in secs) in the recall task

		HCL	LCL
Success rate	Combined over all tasks	33.64%	97.67%
	Budget line	36.72%	98.37%
	After... Multiplication	8.97%	89.23%
	Addition	20.69%	96.92%
	Click-a-button	34.25%	98.46%
Decision time	Combined over all tasks	7.07	2.31
	Budget line	6.96	2.16
	After... Multiplication	7.71	3.15
	Addition	7.68	2.87
	Click-a-button	7.21	2.67
Decision time for correct recall	Combined over all tasks	6.21	2.31
	Budget line	6.18	2.13
	After... Multiplication	6.95	2.98
	Addition	6.72	2.81
	Click-a-button	6.17	2.61

Notes: HCL (LCL) stands for the high (low) cognitive load treatment. Differences between treatments (HCL vs. LCL) are statistically significant (p-value < 0.001) for all rows of the table based on a χ^2 test (for the top panel) and a Kruskal-Wallis test (for the medium and bottom panels). Differences between tasks are statistically significant (p-value < 0.001) based on a χ^2 test (for the top panel; column-wise) and a Kruskal-Wallis test (separately for the medium and bottom panel; column-wise).

We can further explore the differences in the success rate and recall time after the various

decision tasks in an econometrics framework. Given the binary nature of the success/failure to recall the number, we estimate a logit model for the success/failure of recalling the memorized number. To condition response times on a set of independent variables, we have to consider that subjects' responses were censored from above due to the time limit of the recall task, so we estimate a censored regression model with an upper limit of 10. All models are estimated with clustered standard errors to take into account the multiple responses given by the same subject and to allow for correlation between responses; i.e., it relaxes the independence assumption and requires only that the observations be independent across the clusters.⁹ Table 4 exhibits the results from a logit regression where success/failure is the dependent variable (model (1)) and results from two censored regression models where response time is the dependent variable. In model (2), we consider response times irrespective of whether subjects correctly recalled the number, while in model (3) we restrict the model to the subsample of response times with a correct recall of the number. All regressions control for the set of observable characteristics shown in Table 2.

Table 4: Logit regression of recall success/failure and Censored regressions of recall time

	Recall success		Recall time ... for correct recall			
	(1)		(2)		(3)	
Constant	1.902	(1.933)	5.704***	(1.382)	5.549***	(0.917)
Task: Budget line	1.896***	(0.156)	-0.930***	(0.090)	-0.836***	(0.078)
Task: Addition	1.116***	(0.193)	-0.179**	(0.082)	-0.193***	(0.074)
Task: Click-a-button	1.799***	(0.171)	-0.533***	(0.094)	-0.480***	(0.087)
HCL treatment	-4.682***	(0.167)	4.865***	(0.147)	4.029***	(0.109)
Age	-0.026	(0.079)	-0.096**	(0.048)	-0.121***	(0.036)
Females	-0.104	(0.193)	0.114	(0.150)	0.059	(0.112)
Household size	-0.022	(0.105)	0.008	(0.069)	0.088*	(0.047)
Reference income	0.027	(0.069)	-0.052	(0.048)	-0.018	(0.037)
Raven's test score	0.115*	(0.060)	-0.048	(0.065)	-0.037	(0.035)
Experience with Raven's test	0.252	(0.207)	-0.301**	(0.141)	-0.173	(0.111)
σ_u			1.654***	(0.062)	1.116***	(0.029)
N	13350		13330		8861	
Log-likelihood	-4738.041		-24945.759		-13548.938	
AIC	9498.082		49915.519		27121.876	
BIC	9580.574		50005.492		27206.949	

Notes: Standard errors in parentheses. * $p < 0.1$, ** $p < 0.05$ *** $p < 0.01$. Base category is the multiplication task. The different number of observations between regressions (1) and (2) is because the software failed to record timing for 20 instances out of 13,350 ($\approx 0.15\%$).

⁹The robust estimator of variance that relaxes the assumption of independent observations involves a slight modification of the robust (or sandwich) estimator of variance which requires independence across all observations (StataCorp, 2013, pp. 312).

Results in Table 4 largely confirm our discussion above. The HCL treatment leads to a statistically significant lower success rate in correctly recalling the number. The difficulty of the 8-digit memorizing task is also reflected in the fact that subjects take more time to type in an answer. With respect to differences between the various decision tasks, subjects exhibit significantly better success rates in correctly recalling the memorized number after every decision task than after the multiplication task (which was intended to be the hardest task in our experiment). Overall, subjects do much better after the induced budget line task and the click-a-button task. In fact, a Wald test of equality of coefficients of the induced budget line task variable and the click-a-button task variable (in model (1)) does not reject the null ($\chi^2 = 0.91$, p-value = 0.34), indicating that subjects perform equally well in recalling the number after these two tasks.

In terms of decision time, models (3) and (4) point to similar conclusions. Subjects take significantly less time to recall the number after every decision task as compared to the multiplication task. All pairwise Wald tests of equality of decision task variables reject the null (p-value < 0.001), indicating statistically significant differences between response times for recall after the various decision tasks. Overall, subjects spend significantly less time in recalling the number after the induced budget line task, although the magnitude of the difference with the click-a-button task is quite small (about 0.4 second). This is perhaps an indication that the induced budget line allocation task did not impose a significant additional burden in the working memory of subjects.

4.2 Manipulation checks

Having established in section 4.1 that the 8-digit number memorization task was indeed difficult, in this section we ask whether the difficulty of the memorization task worked in the expected direction. That is, we ask whether the cognitive load manipulation resulted in loading the working memory capacity of subjects which in turned led to worse outcomes for tasks where reasoning was required. [Deck and Jahedi \(2015\)](#) note the importance of these manipulation checks because if memorizing a large number does not affect ability to do multiplication, then a more extreme cognitive load manipulation would be warranted. On the other hand, if subjects cannot perform a simple addition when memorizing a number, then the manipulation might be too strong.

The top panel of Table 5 shows the success rate in the multiplication, addition and click-a-button tasks across the two treatments. The click-a-button task has an almost perfect success rate which is not statistically different between the two treatments. This indicates that the task was easy to perform and that subjects could adequately execute the task even when their working memory was loaded. Recall that the task was designed as a control task which does

not require any reasoning to execute. The addition task was designed as a task of intermediate difficulty (something between the click-a-button and the multiplication task in terms of difficulty). Subjects did very good in this task when they were placed under low cognitive load with a success rate of 91.87%. The HCL treatment successfully reduced this success rate to 85.98% which is a statistically significant reduction according to a χ^2 test (p-value = 0.005). The multiplication task was designed to be more cognitively demanding and this is exactly what our data show: subjects show a success rate of 55.82% under the LCL treatment but only a success rate of 39.08% in the HCL treatment (p-value < 0.001).

The medium and bottom panels in Table 5 show response times for each decision task separately for each treatment. The bottom panel constraints the sample to only those that correctly answered the decision task (i.e., they correctly responded to the multiplication, addition or the click-a-button task). The pattern is similar to what was discussed in the previous section. Subjects spent more time to respond to more difficult tasks; compared, for example, to the 8.66 seconds needed to respond to the multiplication task and the 2.25 seconds needed to respond to the click-a-button task under the HCL treatment. In addition, subjects take slightly more time when they respond incorrectly to the decision task, indicating that the extra time they take is probably due to extra effort needed to solve the task.

Overall, the response times indicate that the multi-tasking demands of the high cognitive load treatment led to an increase in the time needed to make a decision. This is in sharp contrast to Gerhardt et al. (2016) where they find that subjects are 10% faster in the presence of cognitive load than in the absence of it. This difference may be due to two design differences: for one their control treatment was a *no-load* treatment rather than a *low-load* treatment as in our case. Second, in their experiment subjects could not cause an earlier display of the recall stage of the working memory task while in our design, since subjects could move at their own pace, making a faster decision would lead to displaying the memory recall stage faster. It is unclear how all these subtle differences may have produced different behaviors for the subjects. This is an area that is still relatively under-developed in the academic literature.

Table 6 econometrically controls for the influence of observable characteristics and allows us to explore the joint influence of the treatment variable and decision tasks. Model (1) shows the coefficient estimates from a logit model where the dependent variable is success/failure in the decision task while models (2) and (3) show the results from the censored regression models with censoring from above at 11 seconds (this is the time limit imposed to all decision tasks). Model (3) is constrained to the subsample of subjects that correctly answered the decision tasks.

Results in Table 6 confirm the descriptive analysis above. The HCL treatment results in a lower success rate across all decision tasks. The subjects also take significantly more time to respond. The click-a-button task variable and the addition task variable are positive and statistically significant in model (1) indicating a higher success rate as compared

Table 5: Success rate and mean decision time (in secs) in decision tasks

		HCL	LCL	p-value
Success rate	Multiplication	39.08%	55.82%	<0.001
	Addition	85.98%	91.87%	0.005
	Click-a-button	99.77%	99.78%	0.975
Decision time	Multiplication	8.66	8.43	0.166
	Addition	5.44	4.46	<0.001
	Click-a-button	2.25	2.53	0.014
Decision time for correct decision	Multiplication	7.51	7.17	0.076
	Addition	5.07	4.32	<0.001
	Click-a-button	2.23	2.51	0.011

Notes: HCL (LCL) stands for the high (low) cognitive load treatment. Last column shows p-values comparing the two treatment for all rows of the table based on a χ^2 test (for the top panel) and a Kruskal-Wallis test (for the other two panels). Differences between tasks are statistically significant (p-value < 0.001) based on a χ^2 test (for the top panel) and a Kruskal-Wallis test (for the other two panels; column-wise) separately for each treatment and panel.

to the multiplication task. The larger coefficient of the click-a-button coefficient implies a larger marginal effect and a larger probability of success in the respective task than that of the addition task. A Wald test rejects equality of coefficients between the click-a-button and the addition task variables across all models (p-value < 0.001). In terms of response times, subjects responded statistically significantly faster in the addition task and even faster in the click-a-button task. Decision times for providing correct answers are also slightly faster.

All in all, the results presented in this section show that the treatment was effective in inducing the desired effect according to our manipulation check. A significant effect shows up even in the task where low reasoning is required (addition task) but not in a task where no reasoning is required (click-a-button task). Furthermore, we found that the effect increases in magnitude in a task involving high reasoning such as the multiplication task.

Table 6: Logit regression of success/failure in the decision task and Censored regression of decision time

	Success		Decision time		Decision time for correct answers	
	(1)		(2)		(3)	
Constant	-2.689*	(1.435)	7.456***	(1.184)	6.621***	(0.922)
Task: Addition	2.245***	(0.136)	-3.984***	(0.141)	-2.658***	(0.128)
Task: Click-a-button	6.268***	(0.718)	-6.555***	(0.154)	-4.964***	(0.137)
HCL treatment	-0.664***	(0.141)	0.328***	(0.124)	0.210**	(0.097)
Age	0.107*	(0.060)	0.093*	(0.049)	0.051	(0.038)
Females	-0.187	(0.152)	0.071	(0.122)	0.014	(0.102)
Household size	0.016	(0.065)	0.004	(0.060)	0.016	(0.045)
Reference income	0.054	(0.049)	-0.077*	(0.041)	-0.044	(0.031)
Raven's test score	0.059	(0.043)	-0.040	(0.036)	-0.038	(0.028)
Experience with Raven's test	0.088	(0.153)	-0.280**	(0.132)	-0.293***	(0.100)
σ_u	-	-	2.367***	(0.051)	1.819***	(0.038)
N	2670		2670		2104	
Log-likelihood	-916.170		-5702.364		-4238.159	
AIC	1852.341		11426.729		8498.318	
BIC	1911.239		11491.517		8560.486	

Notes: Standard errors in parentheses. * $p < 0.1$, ** $p < 0.05$ *** $p < 0.01$. Base category is the multiplication task.

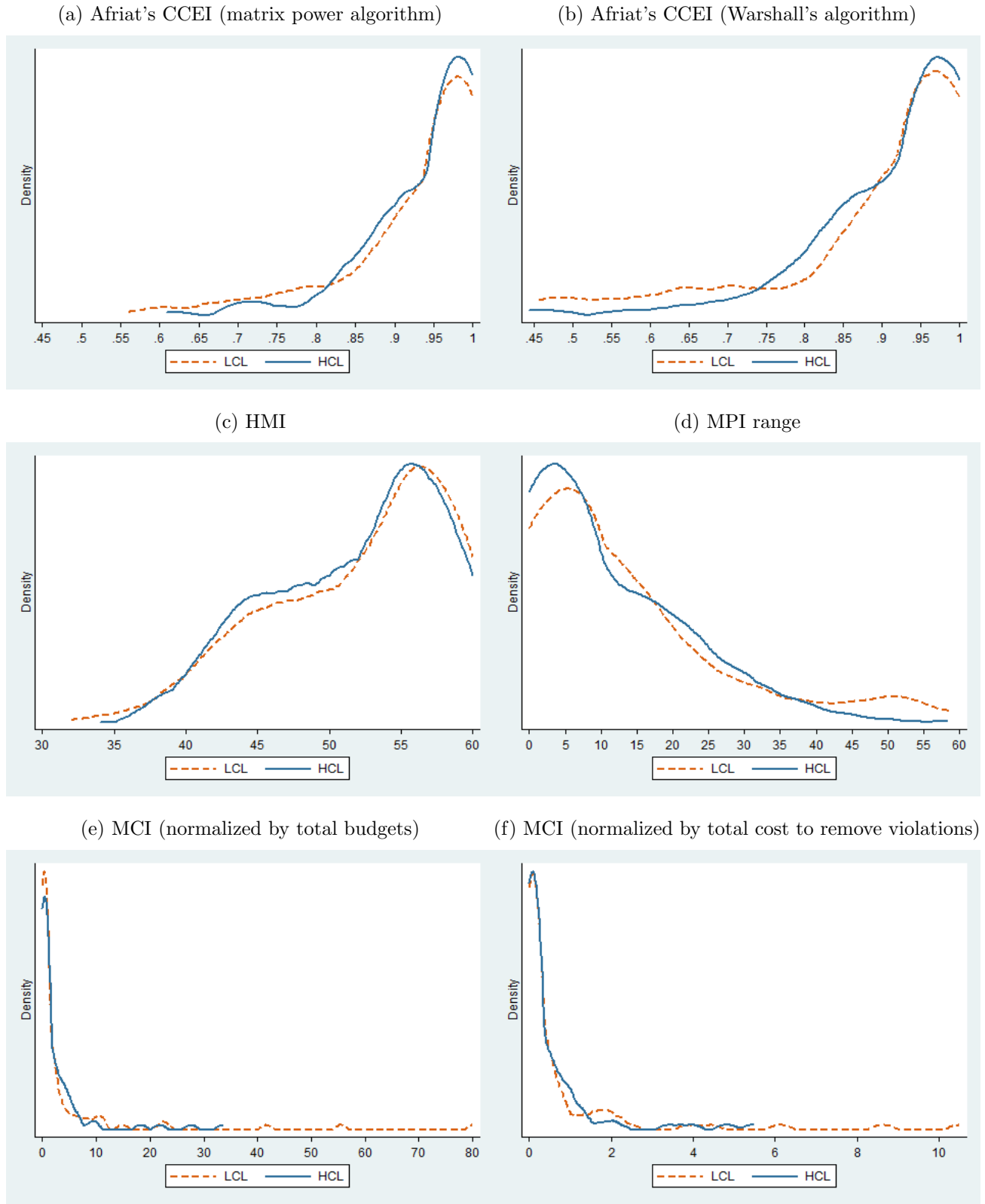
4.3 Economic rationality

Given that manipulation checks in section 4.2 show that the cognitive load treatment concurrently affects tasks that involve both low and high reasoning, we now more confidently turn to examining the treatment effects for economic rationality. For this, we employ as the dependent variable of interest the various goodness-of-fit measures discussed in Section 3.

Table 7 shows the mean, standard deviation, and median values for the various measures separately for each treatment. The MPI comes in interval form (minimum/maximum) so we employ the range as our dependent variable to use in the table. Table 7 shows that both mean and median values are very close. The last two columns in Table 7 present results from statistical tests comparing the two treatments. Every single test fails to reject the null indicating a null treatment effect. In addition, Figure 3 graphs the distribution of the various measures by treatment using kernel density estimators. A similar picture emerges since lines practically overlap for the two treatments.

Table 8 shows the results from OLS regressions (for Afriat's CCEI, HMI, MCI) and an interval regression model (for the MPI which comes in interval form). The specifications control for the observable characteristics listed in Table 2 and a time variable equal to the total decision time a subject spent in the 60 periods of the induced budget line task. This allows us to control

Figure 3: Kernel density estimators of goodness-of-fit measures for consistency with the Generalized Axiom of Revealed Preferences



Notes: CCEI, HMI, MPI, MCI stand for Critical Cost Efficiency index, Houtman-Maks index, Money Pump index, Minimum Cost index, respectively.

Table 7: Descriptive statistics of goodness-of-fit measures by treatment

	HCL		LCL		Kruskal-Wallis p-value	Kolmogorov- Smirnov p-value
Afriat's CCEI (matrix power algorithm)	0.939	(0.078) [0.966]	0.927	(0.097) [0.966]	0.964	0.606
Afriat's CCEI (War- shall's algorithm)	0.917	(0.100) [0.955]	0.894	(0.136) [0.944]	0.737	0.684
HMI	51.736	(6.034) [53]	52.044	(6.453) [54]	0.554	0.981
MPI range	10.995	(12.174) [6.547]	13.271	(14.963) [8.597]	0.652	0.670
MCI (normalized by to- tal budgets)	2.551	(5.573) [0.396]	4.082	(11.420) [0.496]	0.934	0.803
MCI (normalized by to- tal cost to remove viola- tions)	0.493	(0.987) [0.084]	0.709	(1.671) [0.097]	0.983	0.803

Notes: Standard deviation in parenthesis. Median value in brackets. Penultimate column shows p-values comparing the two treatments for all rows of the table based on a Kruskal-Wallis test. Last column shows p-values from a Kolmogorov-Smirnov equality of distributions test comparing the two treatments for all rows of the table. HCL (LCL) stands for the high (low) cognitive load treatment. CCEI, HMI, MPI, MCI stand for Critical Cost Efficiency index, Houtman-Maks index, Money Pump index, Minimum Cost index, respectively. The MPI index is in interval form therefore the table presents summary statistics of the range of the intervals.

for decision style differences. The table confirms our null result obtained in the descriptive analysis. In fact, the only statistically significant variable emerging from our regressions is the Raven test score suggesting that fluid intelligence might be a more important factor determining economic rationality than a temporary cognitive load manipulation.

Table 8: OLS regressions of goodness-of-fit measures and Interval regression (for MPI) with clustered standard errors

		Afriat's CCEI		HMI	MPI	MCI normalized by ...	
		Matrix Power algorithm	Warshall's algorithm			total budget	total cost
		(1)	(2)	(3)	(4)	(5)	(6)
Constant		0.733*** (0.135)	0.638*** (0.183)	41.696*** (9.464)	1.321 (0.933)	16.692 (14.043)	3.361 (2.133)
HCL treatment		0.015 (0.015)	0.025 (0.020)	-0.156 (1.044)	0.044 (0.099)	-1.245 (1.549)	-0.196 (0.235)
Age		0.005 (0.005)	0.008 (0.007)	0.185 (0.372)	-0.021 (0.037)	-0.531 (0.552)	-0.100 (0.084)
Females		-0.016 (0.014)	-0.025 (0.019)	-0.473 (1.005)	0.052 (0.093)	0.462 (1.492)	0.080 (0.227)
Household size		0.003 (0.007)	0.002 (0.009)	0.053 (0.464)	0.044 (0.041)	0.162 (0.689)	0.017 (0.105)
Reference income	in-	-0.000 (0.005)	-0.003 (0.006)	-0.268 (0.325)	0.007 (0.031)	0.272 (0.482)	0.032 (0.073)
Raven's score	test	0.010** (0.005)	0.013** (0.006)	0.866*** (0.320)	-0.048 (0.035)	-0.526 (0.475)	-0.104 (0.072)
Experience with Raven's test		-0.021 (0.014)	-0.032* (0.019)	-1.762* (1.004)	0.110 (0.098)	2.435 (1.490)	0.363 (0.226)
Total decision time		0.000 (0.000)	0.000 (0.000)	0.004 (0.003)	-0.000 (0.000)	-0.001 (0.005)	-0.000 (0.001)
$\ln(\sigma)$		-	-	-	-0.966*** (0.095)	-	-
N		178	178	178	178	178	178
R^2		0.065	0.076	0.083		0.042	0.049
Adjusted R^2		0.020	0.032	0.039		-0.003	0.004
Log-likelihood		-	-	-	-217.795	-	-
AIC		-	-	-	455.590	-	-
BIC		-	-	-	487.408	-	-

Notes: CCEI, HMI, MPI, MCI stand for Critical Cost Efficiency index, Houtman-Maks index, Money Pump index, Minimum Cost index, respectively. The table shows results from an interval regression for MPI and OLS regressions for all other models.

4.4 Was sample size large enough to detect treatment effects?

In this last section of the results we address whether our null effect is genuine. One could rightly ask the question about what is the effect size that our sample size was powerful enough to detect. Or alternatively, whether we could attribute our null result to a false negative.

Our per treatment sample size was decided based on sample size calculations and served as a stopping rule for this experiment when we achieved the necessary per treatment sample. Assuming $\alpha = 0.05$ (Type I error) and $\beta = 0.20$ (Type II error), the per group (treatment) minimum sample size required to compare two means μ_0 and μ_1 , with common variance of σ^2 in order to achieve a power of at least $1 - \beta$ is given by (Kupper and Hafner, 1989):

$$n = \frac{2(z_{1-\alpha/2} + z_{1-\beta})^2}{\left(\frac{\mu_0 - \mu_1}{\sigma}\right)^2} \quad (1)$$

For $\alpha = 0.05$ and $\beta = 0.20$ the values of $z_{1-\alpha/2}$ and $z_{1-\beta}$ are 1.96 and 0.84, respectively; and $2(z_{1-\alpha/2} + z_{1-\beta}) = 15.68$, which can be rounded up to 16. The formula then collapses to $n = \frac{16}{\Delta^2}$ (with $\Delta = \frac{\mu_0 - \mu_1}{\sigma}$), which is known as Lehr's (1992) equation (see also Chapter 2 in van Belle, 2008). To calculate a minimum sample size, one needs to feed the above formula with values for σ and the minimum meaningful difference $\mu_0 - \mu_1$. To specify the necessary parameters to feed the above formula, we looked at prior data collected by Choi et al. (2014). Since our induced budget allocation task was based on their study, it seemed natural to use parameter values from the Choi et al. (2014) study. In their paper they calculated both Afriat's CCEI and the HMI. Panels A and C in Table 1 in Choi et al.'s (2014) online Appendix provided us with the necessary information. For the CCEI, we used a range of σ values from 0.12 to 0.16 (which largely reflects the standard deviations of the CCEI in their study) and a range of possible differences d from 0.05 to 0.1. For the HMI, we used σ values from 2 to 2.4 and a range of possible differences d from 1 to 3.

Table 9 shows the result of equation 1 for various values of σ and d separately for the CCEI and the HMI. It is obvious that the lower the minimum meaningful difference d and the higher the standard deviation σ , a larger sample size is needed to detect the desired effect size with 80% power. Our sample size can safely detect a minimum meaningful difference for CCEI larger than 0.05 (but not smaller ones). The increase in the sample size needed to detect smaller differences with sufficient power was deemed unrealistic given our resources. We can also safely detect the smallest possible difference in the HMI (a value of 1). Thus, we conclude that our sample size given a power of 80% was enough to detect even small differences in these two particular goodness-of-fit measures. The fact that we observe no statistically significant effect gives us enough confidence to conclude that our null effect is genuine and not the result of a small sample size.

Table 9: Per treatment sample size calculations for different values of σ , and d for Afriat’s CCEI (top panel) and the HMI (bottom panel)

		$\sigma = 0.12$	$\sigma = 0.14$	$\sigma = 0.16$
Afriat’s CCEI	$d = 0.05$	90	123	161
	$d = 0.06$	63	85	112
	$d = 0.07$	46	63	82
	$d = 0.08$	35	48	63
	$d = 0.09$	28	38	50
	$d = 0.1$	23	31	40
		$\sigma = 2$	$\sigma = 2.2$	$\sigma = 2.4$
HMI	$d = 1$	63	76	90
	$d = 2$	16	19	23
	$d = 3$	7	8	10

5 Conclusions

One of the fundamental and important questions in economics is whether economic rationality can be influenced by cognitive ability, to the extent that inconsistencies resulting from low decision-making quality are due to limited cognitive resources. A number of papers have found that increasing cognitive load can influence performance in reasoning and math tasks as well as risk-aversion and impatience over choices (see [Deck and Jahedi, 2015](#)). With the exception of [Castillo et al. \(2017\)](#), no other study has examined the effect of cognitive ability on economic rationality. A possible caveat however to the [Castillo et al. \(2017\)](#) study is that their manipulation was based on self-reported measures of sleepiness through circadian mismatch. Hence, they were not able to convincingly show that their manipulation based on this measure was successful.

In our study, we exogenously impaired subjects’ cognitive resources via cognitive load by using a number memorization task. We designed several incentivized manipulation checks to undoubtedly show the success of our manipulation. We then examined the effect of our manipulation on consistency in economic rationality using induced budget allocation tasks and several goodness-of-fit measures for rationality. Our results generally suggest a statistically and economically insignificant effect of cognitive load on economic rationality. We then showed that our study has a large enough sample size, given a power of 80%, to detect even small effects, which suggests that our null effect finding is genuine and not due to false negatives. Interestingly, a measure of cognitive ability (i.e., the Raven test score) was statistically significant in our regression models suggesting that fluid intelligence could be a more important correlate of economic rationality than temporary cognitive loads in the working memory of subjects.

Our finding suggests that researchers need not worry about heterogeneity in subjects’ level of cognitive resources when conducting studies in settings where economic rationality plays an

important role in behavior or decision making. This is because our results suggest that subjects with less cognitive resources could still optimally allocate their limited attention to behavioral aspects related to economic rationality, akin perhaps to the assumption behind rational inattention models (Sims, 2003, 2006).

Although our study is the first to test the effect of exogenously manipulated cognitive load on economic rationality, this is just one study and so future studies should test the robustness of our findings. One way that our design could be extended is by forcing subjects to make quicker decisions under cognitive load. In our design, although subjects were cognitively loaded, they could take their time responding to the induced budget allocation task. This is indicated by the fact that, on average, response times were larger in the high cognitive load treatment. One way to interpret this finding is that subjects could be trying to compensate being under cognitive load by taking more time to decide, in order to engage their reasoning system more, i.e., ‘System 2’. Of course, this was not always effective since, for example, in a high reasoning multiplication task, success rates were particularly low even though subjects took more time answering the multiplication task. Limiting the time subjects could take when making allocations in the budget task, e.g., when under time pressure, is another way one could force engagement of ‘System 1’ and disengagement of ‘System 2’.

Second, our point above reflects the importance of integrating the measurement of response times as a standard part of any experiment, not just for ones that utilize cognitive load paradigms. Given the prevalence of computerized experiments nowadays, this would be a simple programming extension. Of course, latency/communication problems can always occur, especially in interactive experiments, and ways to account for potential measurement in variables errors will be important in such instances.

References

- Afriat, S. N. (1967). The construction of utility functions from expenditure data. *International Economic Review* 8(1), 67–77.
- Afriat, S. N. (1972). Efficiency estimation of production functions. *International Economic Review* 13(3), 568–598.
- Andreoni, J., M. A. Kuhn, and C. Sprenger (2013). On measuring time preferences. *Working paper, University of California at San Diego*.
- Becker, G. S. (1962). Irrational behavior and economic theory. *Journal of Political Economy* 70(1), 1–13.
- Benjamin, D. J., S. A. Brown, and J. M. Shapiro (2013). Who is ‘behavioral’? Cognitive ability and anomalous preferences. *Journal of the European Economic Association* 11(6), 1231–1255.
- Bilker, W. B., J. A. Hansen, C. M. Brensinger, J. Richard, R. E. Gur, and R. C. Gur (2012). Development of abbreviated nine-item forms of the raven’s standard progressive matrices test. *Assessment* 19(3), 354–369.
- Briz, T., A. C. Drichoutis, and R. M. Nayga (2016). Randomization to treatment failure in experimental auctions: The value of data from training rounds. *Munich Personal RePEc Archive No. 70139*.
- Bronars, S. G. (1987). The power of nonparametric tests of preference maximization. *Econometrica* 55(3), 693–698.
- Burghart, D. R., P. W. Glimcher, and S. C. Lazzaro (2013). An expected utility maximizer walks into a bar. *Journal of Risk and Uncertainty* 46(3), 215–246.
- Castillo, M., D. L. Dickinson, and R. Petrie (2017). Sleepiness, choice consistency, and risk preferences. *Theory and Decision* 82(1), 41–73.
- Choi, S., R. Fisman, D. Gale, and S. Kariv (2007a). Consistency and heterogeneity of individual behavior under uncertainty. *American Economic Review* 97(5), 1921–1938.
- Choi, S., R. Fisman, D. M. Gale, and S. Kariv (2007b). Revealing preferences graphically: An old method gets a new tool kit. *American Economic Review* 97(2), 153–158.
- Choi, S., S. Kariv, W. Müller, and D. Silverman (2014). Who is (more) rational? *American Economic Review* 104(6), 1518–50.
- Cochran, W. G. and D. B. Rubin (1973). Controlling bias in observational studies: A review. *Sankhyā: The Indian Journal of Statistics, Series A* 35(4), 417–446.
- Colom, R., I. Rebollo, A. Palacios, M. Juan-Espinosa, and P. C. Kyllonen (2004). Working memory is (almost) perfectly predicted by g. *Intelligence* 32(3), 277–296.
- Dean, M. and D. Martin (2016). Measuring rationality with the minimum cost of revealed preference violations. *The Review of Economics and Statistics* 98(3), 524–534.

- Deaton, A. and N. Cartwright (2016). Understanding and misunderstanding randomized controlled trials. *National Bureau of Economic Research Working Paper No. 22595*.
- Deck, C. and S. Jahedi (2015). The effect of cognitive load on economic decision making: A survey and new experiments. *European Economic Review* 78, 97–119.
- Echenique, F., S. Lee, and M. Shum (2011). The money pump as a measure of revealed preference violations. *Journal of Political Economy* 119(6), 1201–1223.
- Fischbacher, U. (2007). z-tree: Zurich toolbox for ready-made economic experiments. *Experimental Economics* 10(2), 171–178.
- Frederick, S. (2005). Cognitive reflection and decision making. *Journal of Economic Perspectives* 19(4), 25–42.
- Gerhardt, H., G. P. Biele, H. R. Heekeren, and H. Uhlig (2016). Cognitive load increases risk aversion. *SFB 649 Discussion Paper 2016-011*.
- Gray, J. R., C. F. Chabris, and T. S. Braver (2003). Neural mechanisms of general fluid intelligence. *Nature Neuroscience* 6(3), 316–322.
- Gray, J. R. and P. M. Thompson (2004). Neurobiology of intelligence: science and ethics. *Nature Reviews Neuroscience* 5(6), 471–482.
- Greiner, B. (2015). Subject pool recruitment procedures: Organizing experiments with ORSEE. *Journal of the Economic Science Association* 1(1), 114–125.
- Gross, J. and D. Kaiser (1996). Two simple algorithms for generating a subset of data consistent with warp and other binary relations. *Journal of Business & Economic Statistics* 14(2), 251–255.
- Heufer, J. and P. Hjertstrand (2015). Consistent subsets: Computationally feasible methods to compute the houtmanmaks-index. *Economics Letters* 128, 87–89.
- Hinson, J. M., T. L. Jameson, and P. Whitney (2003). Impulsive decision making and working memory. *Journal of Experimental Psychology: Learning, Memory, and Cognition* 29(2), 298–306.
- Ho, D. E., K. Imai, G. King, and E. A. Stuart (2007). Matching as nonparametric preprocessing for reducing model dependence in parametric causal inference. *Political Analysis* 15(3), 199–236.
- Houtman, M. and J. Maks (1985). Determining all maximal data subsets consistent with revealed preference. *Kwantitatieve Methoden* 19, 89–104.
- Imbens, G. W. and D. B. Rubin (2016). *Causal Inference for Statistics, Social, and Biomedical Sciences, An introduction*. Cambridge and New York: Cambridge University Press.
- Imbens, G. W. and J. M. Wooldridge (2009). Recent developments in the econometrics of program evaluation. *Journal of Economic Literature* 47(1), 5–86.

- Kahneman, D. (2011). *Thinking, fast and slow* (1st ed.). New York: Farrar, Straus and Giroux.
- Kupper, L. L. and K. B. Hafner (1989). How appropriate are popular sample size formulas? *The American Statistician* 43(2), 101–105.
- Lehr, R. (1992). Sixteen s-squared over d-squared: A relation for crude sample size estimates. *Statistics in Medicine* 11(8), 1099–1102.
- Moher, D., S. Hopewell, K. F. Schulz, V. Montori, P. C. Gtzsche, P. J. Devereaux, D. Elbourne, M. Egger, and D. G. Altman (2010). CONSORT 2010 explanation and elaboration: updated guidelines for reporting parallel group randomised trials. *BMJ* 340.
- Mutz, D. C. and R. Pemantle (2015). Standards for experimental research: Encouraging a better understanding of experimental methods. *Journal of Experimental Political Science* 2(2), 192–215.
- Rubin, D. B. (1974). Estimating causal effects of treatments in randomized and nonrandomized studies. *Journal of Educational Psychology* 66(5), 688–701.
- Rubin, D. B. (1990). [On the application of probability theory to agricultural experiments. Essay on principles. Section 9.] Comment: Neyman (1923) and causal inference in experiments and observational studies. *Statistical Science* 5(4), 472–480.
- Shiv, B. and A. Fedorikhin (1999). Heart and mind in conflict: the interplay of affect and cognition in consumer decision making. *Journal of Consumer Research* 26(3), 278–292.
- Sims, C. A. (2003). Implications of rational inattention. *Journal of Monetary Economics* 50(3), 665–690.
- Sims, C. A. (2006). Rational inattention: Beyond the linear-quadratic case. *American Economic Review* 96(2), 158–163.
- Smeulders, B., L. Cherchye, F. C. R. Spijksma, and B. De Rock (2013). The money pump as a measure of revealed preference violations: A comment. *Journal of Political Economy* 121(6), 1248–1258.
- Speed, T. P. (1990). Introductory remarks on Neyman (1923). *Statistical Science* 5(4), 463–464.
- Splawa-Neyman, J., D. M. Dabrowska, and T. P. Speed (1990). On the application of probability theory to agricultural experiments. essay on principles. section 9. *Statistical Science* 5(4), 465–472.
- Stanovich, K. E. and R. F. West (2001). Individual differences in reasoning: Implications for the rationality debate? *Behavioral and Brain Sciences* 23(5), 645–665.
- StataCorp (2013). *Stata user’s guide release 13*. College Station, Texas, USA: Stata Press.
- van Belle, G. (2008). *Statistical Rules of Thumb* (2nd ed.). John Wiley & Sons, Inc.
- van Bruggen, P. and J. Heufer (2017). Afriat in the lab. *Journal of Economic Theory* 169, 546–550.

- Varian, H. (1993). Goodness-of-fit for revealed preference tests. *University of Michigan, Mimeo*.
- Varian, H. R. (1982). The nonparametric approach to demand analysis. *Econometrica* 50(4), 945–973.
- Varian, H. R. (1988). Revealed preference with a subset of goods. *Journal of Economic Theory* 46(1), 179–185.
- Varian, H. R. (1990). Goodness-of-fit in optimizing models. *Journal of Econometrics* 46(1), 125–140.
- Varian, H. R. (1996). Efficiency in production and consumption. In H. R. Varian (Ed.), *Computational Economics and Finance: Modeling and Analysis with Mathematica*, pp. 131–142. New York: Springer-Verlag.
- Warshall, S. (1962). A theorem on boolean matrices. *Journal of the ACM* 9(1), 11–12.

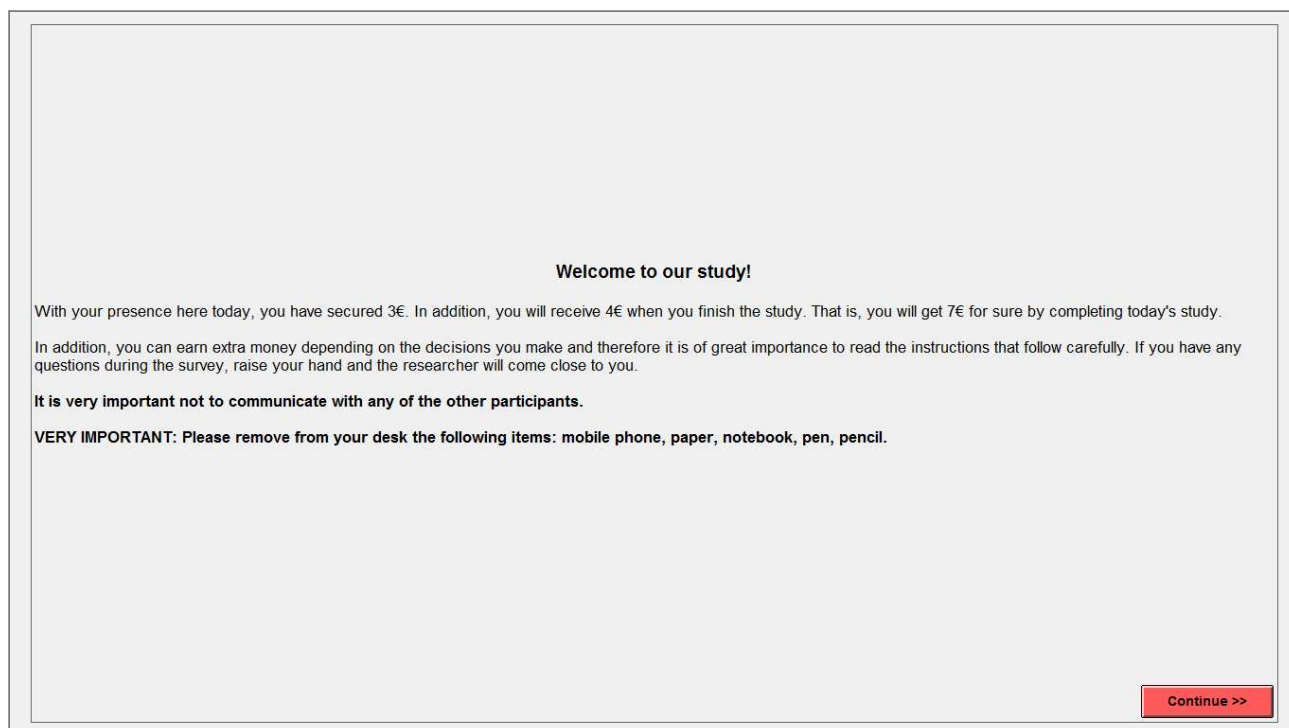
Electronic Supplementary Material of Economic rationality under cognitive load

Andreas C. Drichoutis* and Rodolfo M. Nayga†

Experimental instructions

Instructions were provided in electronic form within the zTree environment. This is a translation of the original instructions written in Greek.

Screen 1



Welcome to our study!

With your presence here today, you have secured 3€. In addition, you will receive 4€ when you finish the study. That is, you will get 7€ for sure by completing today's study.

In addition, you can earn extra money depending on the decisions you make and therefore it is of great importance to read the instructions that follow carefully. If you have any questions during the survey, raise your hand and the researcher will come close to you.

It is very important not to communicate with any of the other participants.

VERY IMPORTANT: Please remove from your desk the following items: mobile phone, paper, notebook, pen, pencil.

Continue >>

*Corresponding author: Assistant Professor, Department of Agricultural Economics & Rural Development, Agricultural University of Athens, Iera Odos 75, 11855, Greece, e-mail: adrihout@aua.gr.

†Distinguished Professor and Tyson Endowed Chair, Department of Agricultural Economics & Agribusiness, University of Arkansas, Fayetteville, AR 72701, USA, and Adjunct Professor, Norwegian Institute of Bioeconomy Research, Korea University, and NBER, tel:+1-4795752299 e-mail: rnayga@uark.edu.

Screen 2

In this study there will be 75 rounds. In every round, you will perform two tasks. The **first task** will be a number memorization task. The **second task** will differ from round to round and will be described in the screens to follow.

Overall, you will complete 150 tasks and will make the respective decisions. One of the tasks will be randomly selected at the end of the study and you will get paid **ONLY** for this decision.

Given you don't know which task will be randomly selected, you need to take each task seriously, since each task has exactly the same probability to be randomly selected and count toward your earnings.

Continue >>

Screen 3

The MEMORIZATION task

In the beginning of each round, you will be given a number to memorize. This number will be visible for 4 seconds and then you will be given a **Second task**. As soon as you finish the Second task, you will be asked to recall the number you memorized in the beginning of the round. If you recall the number correctly, your earnings from the memorization task will be **9€**. If you don't recall the number correctly, your earnings from the memorization task will be **0€**.

In the next screens you will be given the chance to practice the memorization task. Practice **DOES NOT** count toward your earnings.

Continue >>

Screen 4

Practice MEMORIZATION task (does not count toward your earnings)

Memorize this number: 7

(In the actual rounds, if you recall the number correctly, you will earn 9€.)
(Otherwise you'll earn 0€)

Screen 5

Practice RECALL task (does not count toward your earnings)

Please type the number you were asked to recall:

(Note: after typing the number, you will need to click OK, to submit your answer.)

OK

Screen 6

The other tasks

In every round, after the memorization task, you will be given a Second task. This task will differ from round to round but will be one of the following types:
(1) arithmetic task (addition and multiplication)
(2) click-a-button task
(3) point allocation task.

You will be able to practice each of these tasks in the screens to follow.

1) Arithmetic task

In this task you will be asked to perform an addition or a multiplication. If you correctly answer the task, you will earn **7€**. If you do not correctly answer the task, you will earn **0€**.

Continue >>

Screen 7

Practice ADDITION task (does not count toward your earnings)

Please choose the correct answer for the following math problem, by clicking on the right button:

$$38 + 7 =$$

(In the actual rounds, if you answer correctly you will earn 7€.)

(Otherwise you will earn 0€)

34	44
35	45
36	48
37	50
39	52
41	54
42	57
43	60

Screen 8

Practice MULTIPLICATION task (does not count toward your earnings)

Please choose the correct answer for the following math problem, by clicking on the right button:

$$15 * 20 =$$

(In the actual rounds, if you answer correctly you will earn 7€.)
(Otherwise you will earn 0€)

279	290
280	291
281	292
282	293
283	295
284	296
285	298
287	300
288	302

Screen 9

2) CLICK-A-BUTTON task

In this task you will be asked to click a button. If you click the button on time, you will earn 7€. If you don't click the button on time, you will earn 0€.

[Continue >>](#)

Screen 10

3) POINT ALLOCATION task

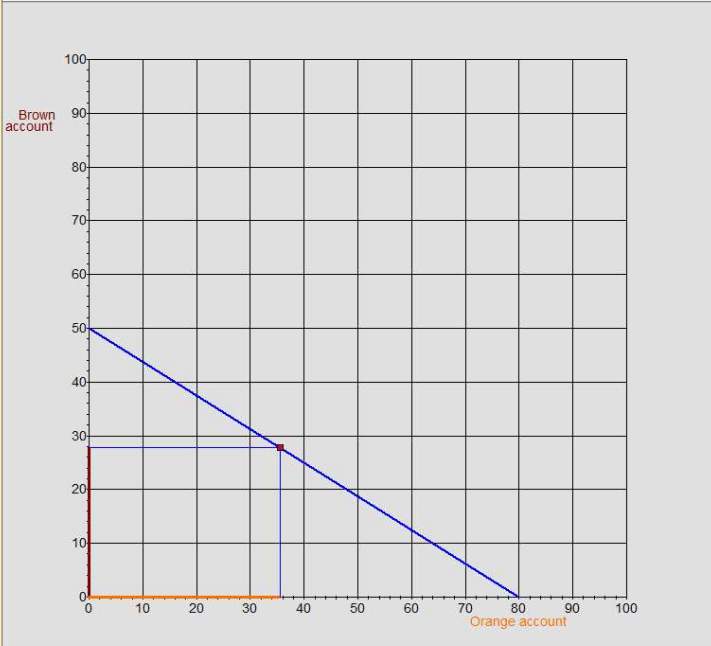
In this task you will be asked to choose an allocation of points between two accounts among a number of possible allocations. The point allocation task will be performed using a graph.

Continue >>

Screen 11

(note: the selected point on the budget line is just for illustration purposes since no point was pre-selected for subjects; subjects had to actually select a point on the budget line themselves)

Practice POINT ALLOCATION task (does not count toward your earnings)



Your current choice is:

Points in the Brown Account =	27.8
Points in the Orange Account =	35.6

Instructions:

The **ORANGE** account corresponds to the horizontal axis and the **BROWN** account corresponds to the vertical axis. Every point in this graph corresponds to a point allocation between the **ORANGE** and the **BROWN** account.

In the beginning of every round you will see a **blue** line showing possible point allocations between the **ORANGE** and the **BROWN** account. In every round you will be able to choose a point on the **blue** line. In every round the computer will randomly graph a different **blue** line.

Choose a point on the **blue** line to familiarize yourself with this choice task. As soon as you make your choice, the exact allocation of points will appear in the upper right part of your screen based on the point selected on the **blue** line.

Finally, click on the **OK** button to submit your choice.

OK

Screen 12

Practice POINT ALLOCATION task (does not count toward your earnings)

Your current choice is:

Points in the **Brown** Account = 27.8

Correspondence of points in Euros = 4.17

Points in the **Orange** Account = 35.6

Correspondence of points in Euros = 5.34

Instructions:

In addition, you will be given the chance to allocate points between the two accounts using choice buttons. An example is shown in the next screen.

Click OK to proceed to the next screen and familiarize yourself with using the buttons as method of allocating points.

OK

Screen 13

Practice POINT ALLOCATION task (does not count toward your earnings)

Your current choice is:

Points in the **Brown** Account = 27.8

Correspondence of points in Euros = 4.17

Points in the **Orange** Account = 35.6

Correspondence of points in Euros = 5.34

Add/Subtract points in the **Brown Account:**

-1
-0.1
+0.1
+1

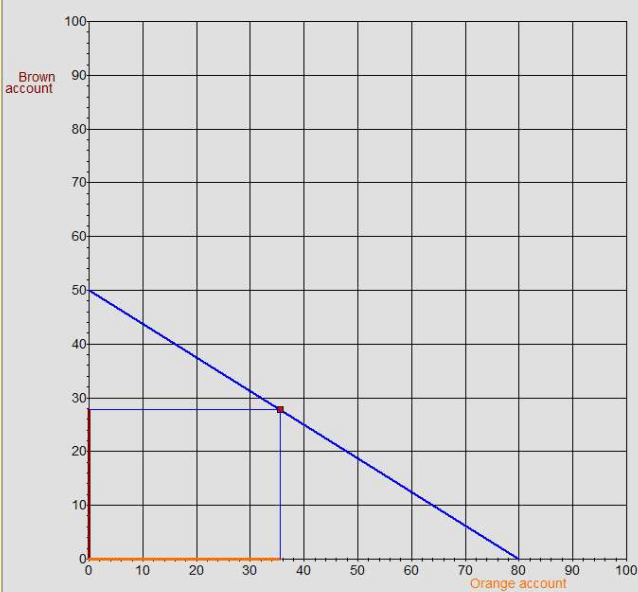
Add/Subtract points in the **Orange Account:**

-1
-0.1
+0.1
+1

OK

Screen 14

Practice POINT ALLOCATION task (does not count toward your earnings)



Your current choice is:

Points in the Brown Account =	27.8
Correspondence of points in Euros =	4.17
Points in the Orange Account =	35.6
Correspondence of points in Euros =	5.34

Instructions:

Allocating points between accounts affects your earnings like this: At the end of the study and only if the POINT ALLOCATION task is selected for payment, the computer will randomly select one of the two accounts: the **BROWN** or the **ORANGE** account. The allocated points in the account that is randomly selected will be converted in Euros at an exchange rate of 7 point = 1 Euro and will be added to your total earnings.

To familiarize yourself, select different points on the **blue** line, and watch how every point corresponds to a different allocation of points and correspondence of Euros.

OK

Screen 15

Summary

In this study there will be 75 rounds. In every round you will perform two tasks, therefore in total you will do 150 tasks as follows:

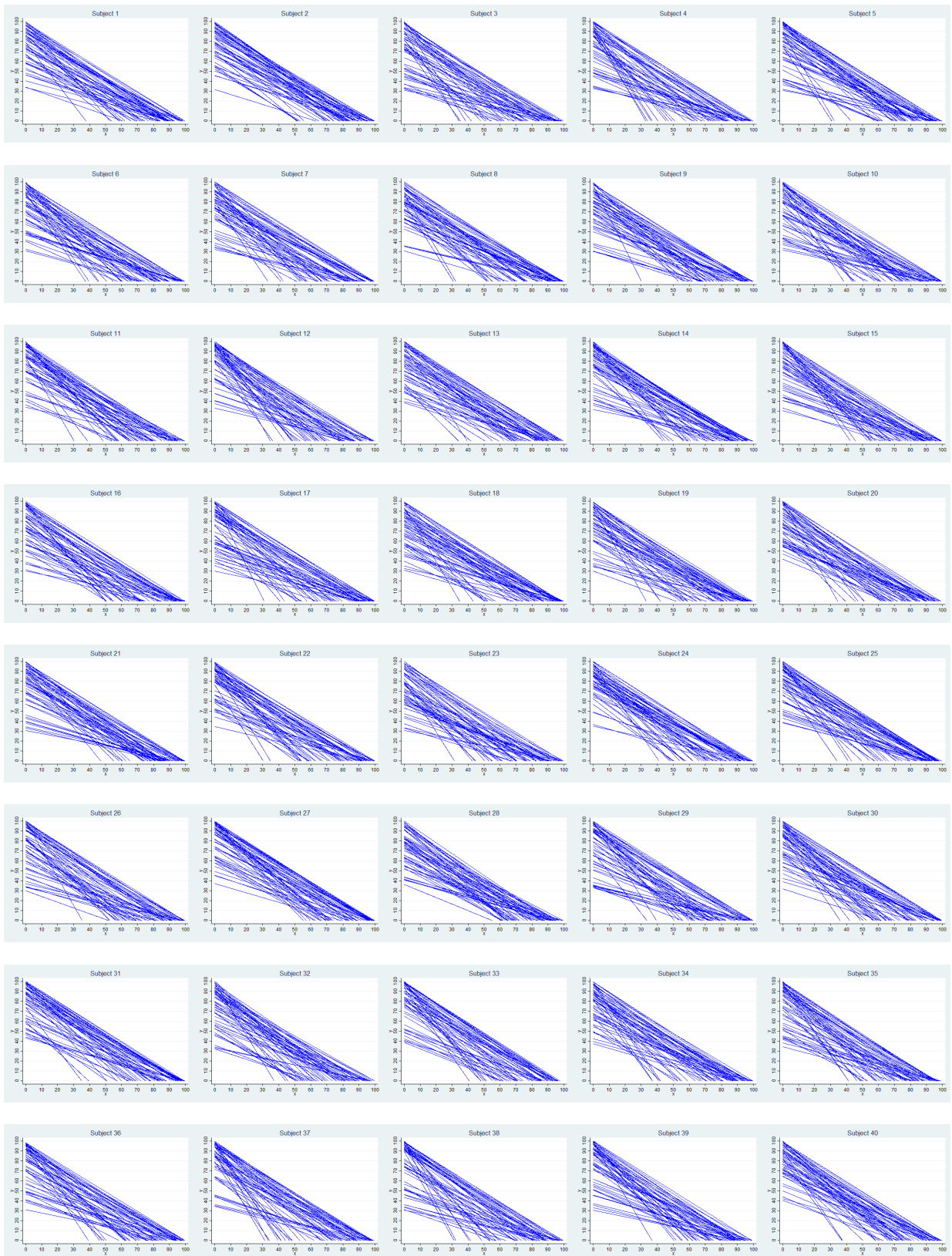
- 1) **75 times** the MEMORIZATION task
- 2) **60 times** the POINT ALLOCATION task
- 3) **5 times** the ADDITION task
- 4) **5 times** the MULTIPLICATION task
- 5) **5 times** the CLICK-A-BUTTON task

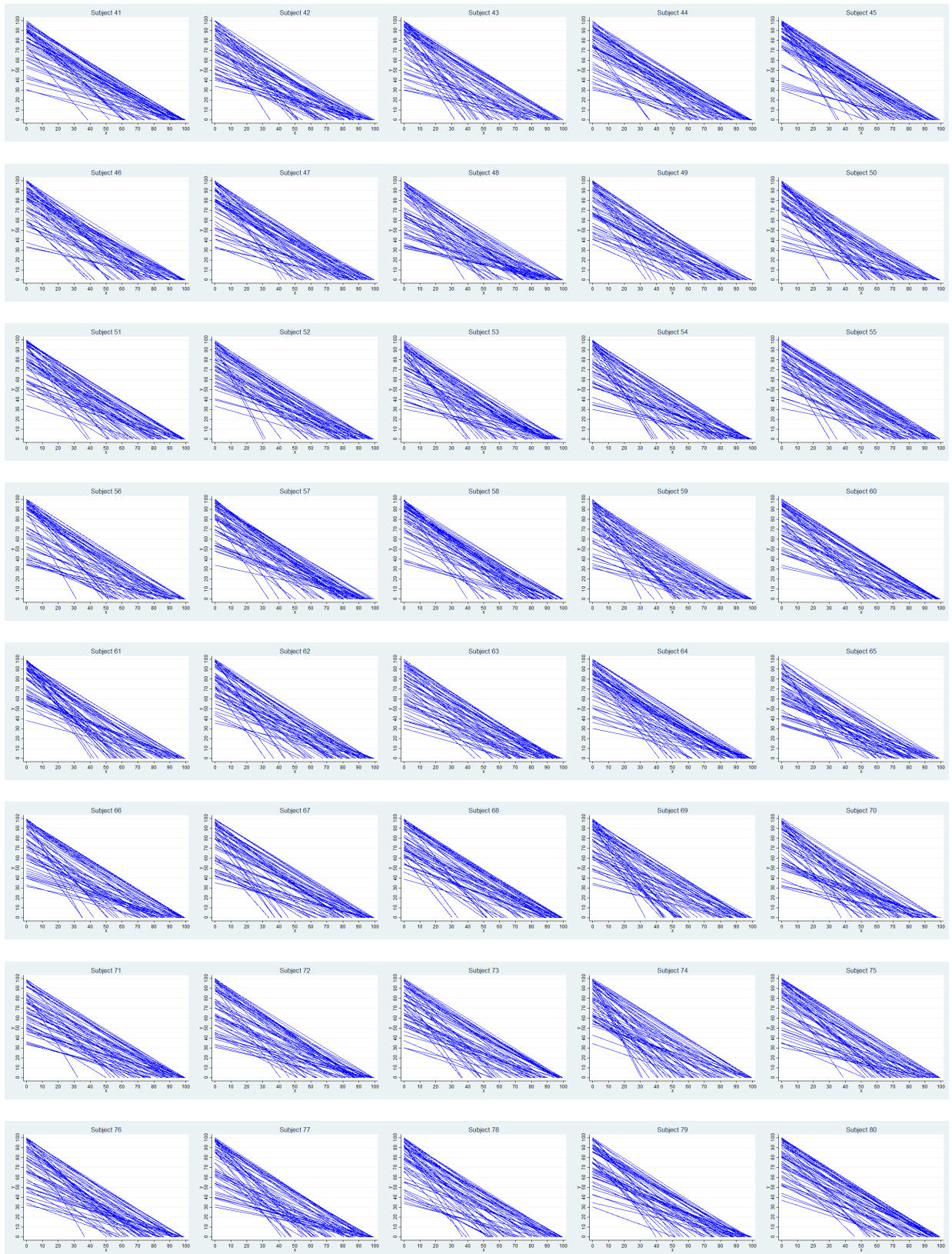
Your **additional** earnings, if you perform the task correctly and on time and the task is selected at the end of the study for payment, will be as follows:

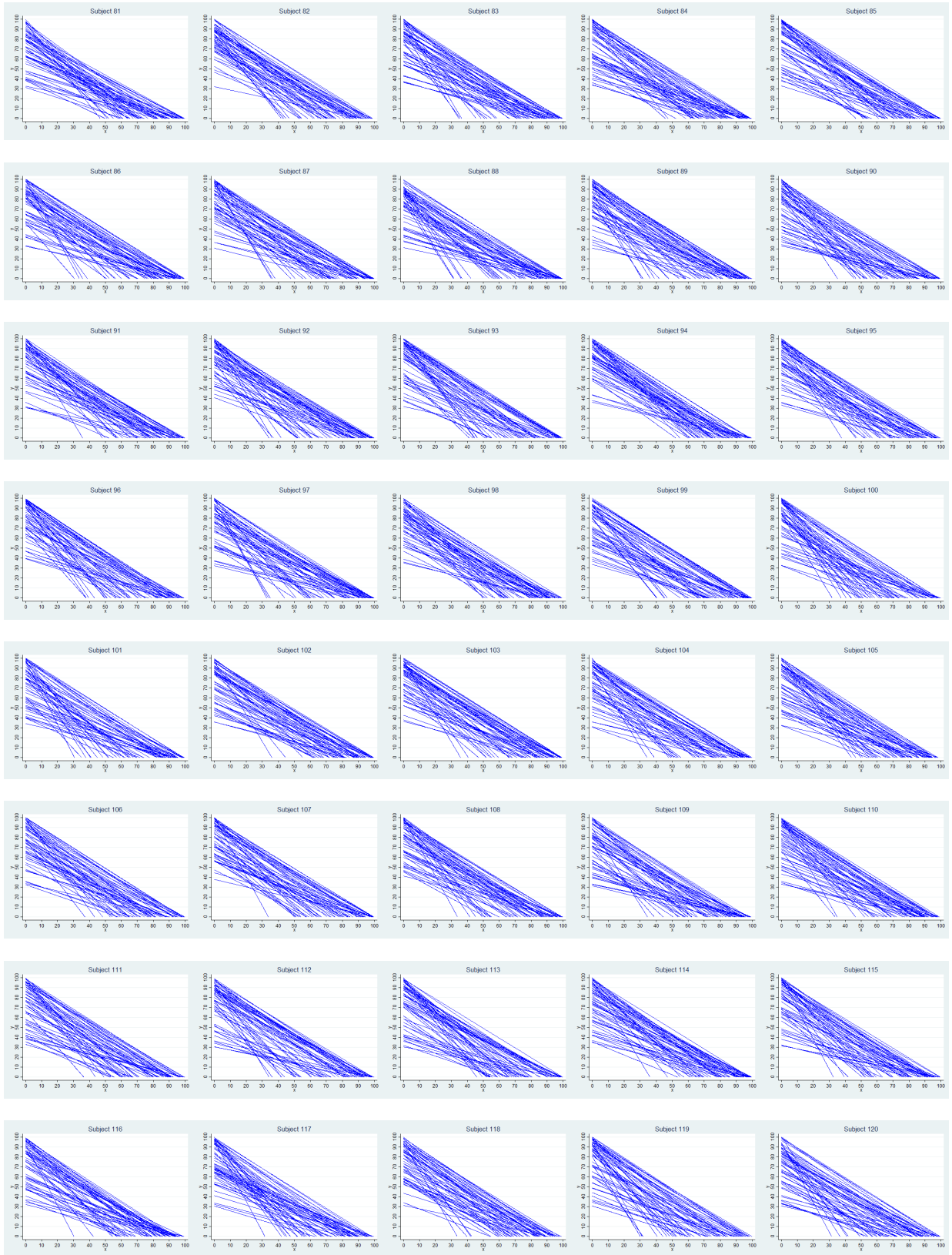
- 1) MEMORIZATION task: **9€**
- 2) ALLOCATION POINT task: **1 point is exchanged with 0.15€ for one of the two accounts** (or 10 points = 1.50€)
- 3) ADDITION task: **7€**
- 4) MULTIPLICATION task: **7€**
- 5) CLICK-A-BUTTON task: **7€**

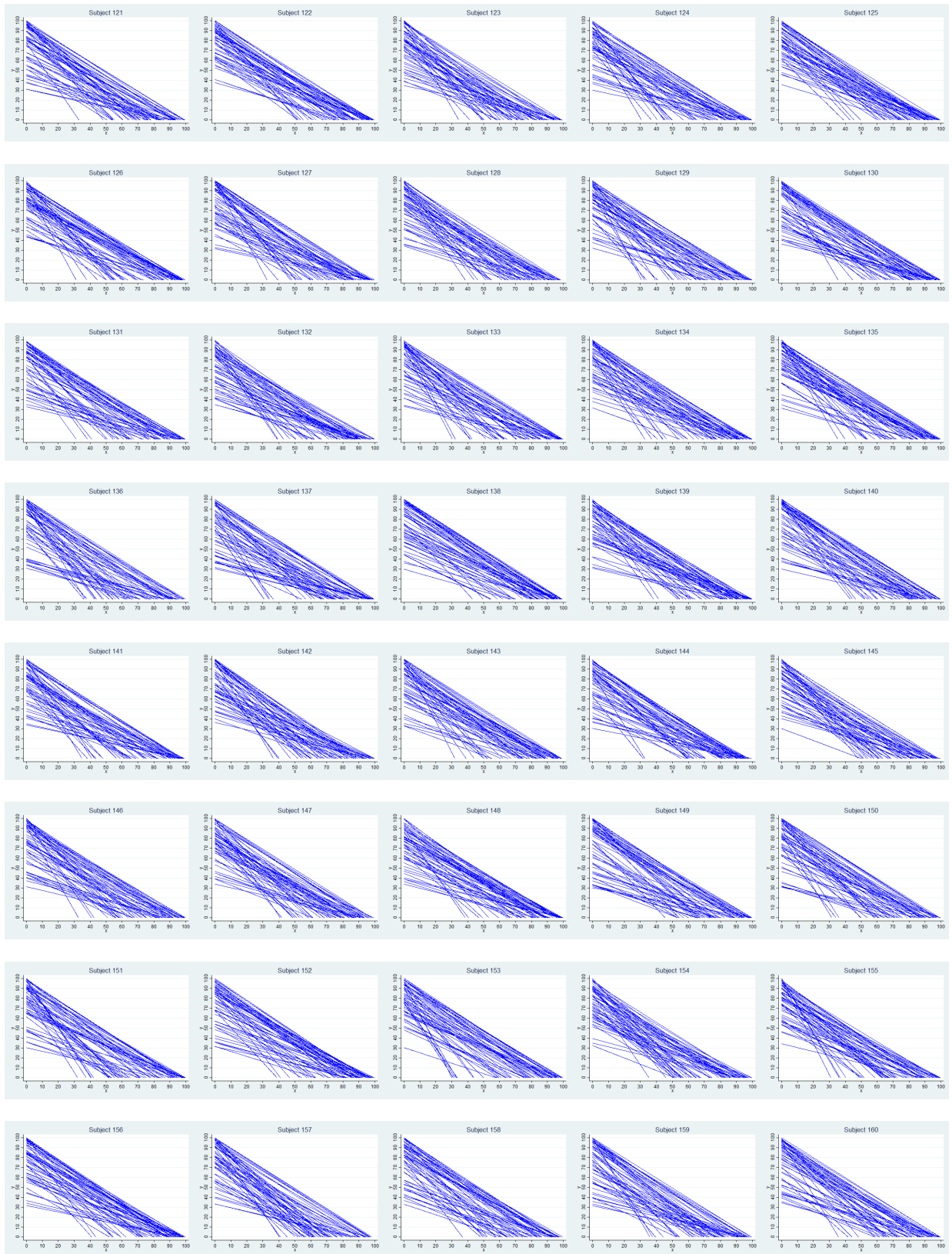
Continue >>

Additional figures









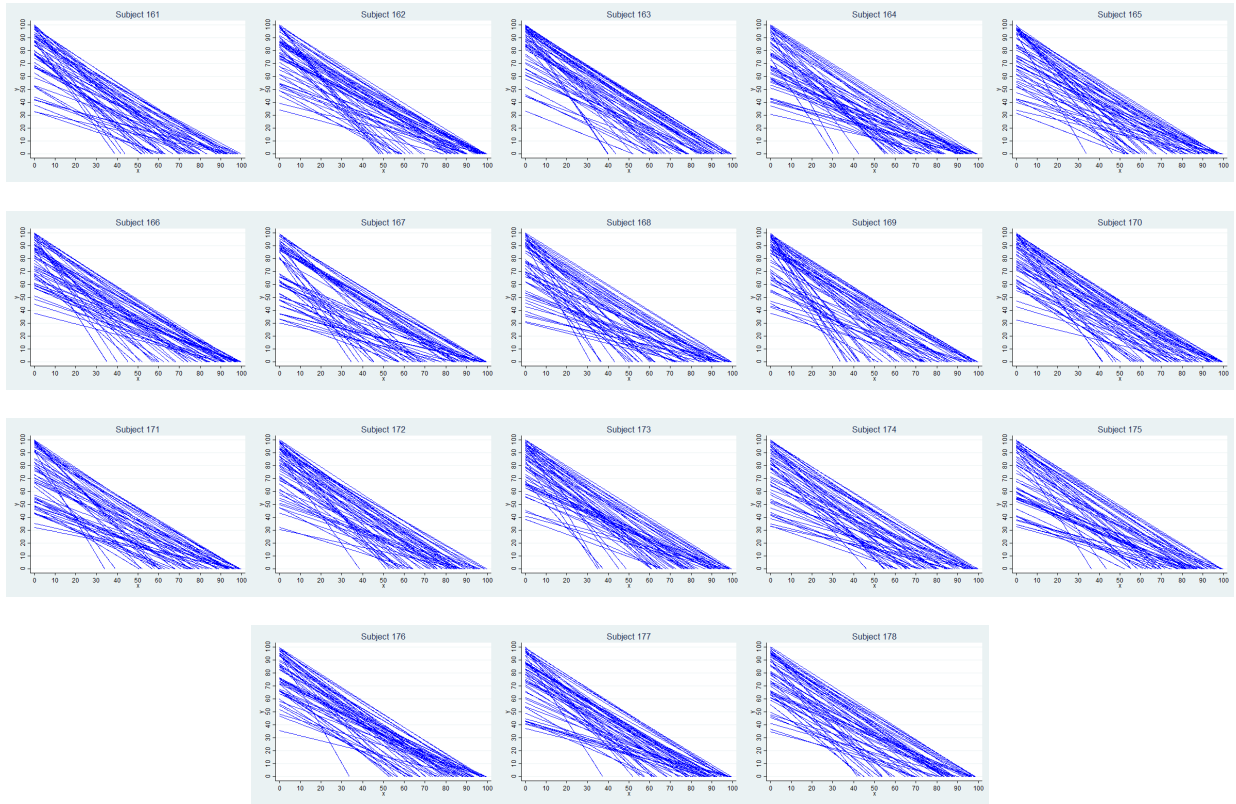


Figure A1: The universe of budget lines shown to each subject