



Munich Personal RePEc Archive

The Unusual Trading Volume and Earnings Surprises in China's Market

Chong, Terence Tai Leung and Wu, Yueer

The Chinese University of Hong Kong

5 February 2018

Online at <https://mpra.ub.uni-muenchen.de/92162/>

MPRA Paper No. 92162, posted 18 Feb 2019 17:40 UTC

The Unusual Trading Volume and Earnings Surprises in China's Market

CHONG, Terence Tai Leung

WU, Yueer

Department of Economics, The Chinese University of Hong Kong

5/2/2019

Abstract

This study examines the empirical relationship between unusual trading volume and earnings surprises in China's A-share market. We provide evidence that an unusually low trading volume contains negative information about firm fundamentals. Moreover, unusual trading volumes could predict abnormal returns close to the earnings announcement date. The degree of and changes in the divergence of opinion could explain this result. Our study provides an insight into China's market, where short sales are strictly forbidden. We report a strong relationship that is quite different from that described in most studies on the United States market. The differences in the findings are likely due to differences in the nature of the market, which is consistent with Miller (1977).

Keywords: Unusual trading volume; earnings surprises; divergence of opinion; stock return; China's market

I. Introduction

Gervais, Kaniel and Mingelgrin (2001) examined the relationship between extreme trading activity and the evolution of stock prices. They found that unusually high or low trading volumes, measured over a day or a week, are often followed by relatively high or low stock returns. Inspired by this study, many other researchers have examined the impacts of unusual trading volume, such as changes in visibility and short-selling constraints. Most studies focused on stock markets in developed countries, especially in the United States. However, there has been little characterization of these trends in the Chinese market. This study explored the relationship between unusual trading volume and earnings surprises for individual stocks in China.

First, we empirically examined whether extreme trading activities play an informational role to predict earnings surprises in China's market. Unusually high and low trading volume might indicate significant, unexpected earnings. In contrast to what has been observed in the United States, stocks with unusually high trading volume may experience lower returns, and those with unusually low trading volume may experience higher returns close to the earnings announcement date in China. This is because the high-volume return premium, a significant component of the United States stock market, does not exist in China, which is a difference in the nature of the market. Stocks that are subject to divergent opinions and short-selling constraints may be biased upwards and thus experience negative return near an earnings announcement date and vice versa. However, consistent with the situation in the

United States, stocks with unusually low trading volume prior to earnings announcements may have relatively lower unexpected earnings in terms of standard unexpected earnings (SUE). SUE is closely related to firm fundamentals, which can be considered as cash flow. Unusually low trading volume indicates low divergence of opinion and a consensus that there are relatively worse firm fundamentals because under short-selling constraints, agents who are informed of bad news incline to avoid trading. My findings suggest the drivers and the mechanisms of earnings surprises in terms of cash flow and market expectations are different.

The ability of an unusually high trading volume to predict higher return is similar in the stock markets of some developed countries, especially the United States. Gervais, Kaniel and Mingelgrin (2001) used data from 1963 to 1996 to examine the high-volume premium in the United States market. Chen, Firth and Rui (2001) examined the markets of nine developed regions and found a positive correlation between trading volume and stock price change from 1973 to 2000. Mayshar (1983) postulated that holders of a specific stock are more optimistic about its prospects; an unusually high volume suddenly would increase the visibility of the stock, leading to higher demand from and price expectations of its holder.¹ In China, however, an unusually high trading volume signals a higher return, and unusually low trading volume predicts a lower return. The opposite effect might suggest another explanation. Banerjee and Kremer (2010) found that unusually high volume indicates a greater divergence of opinion about stock prospects. Miller (1977) hypothesized that prices of

¹ Kaniel, Ozoguz and Starks (2009) explained increased visibility of a stock also increases its investor base, and a concomitant reduction in the cost of capital.

stocks without short-selling are biased upwards if there is high divergence of opinion. Berkman, Dimitrov, Jain, Koch and Tice (2009) found that if earnings announcements reduce differences of opinion and overvaluation; stocks with high difference of opinion and stricter short-selling constraints often experience a decline in price around the earnings announcement date. By the same logic, it could be deduced that if the views about a stock with lower difference of opinion before the earnings announcement become more divergent after the announcement, the stock tends to have a higher excess return relative to the market close to the earnings announcement date.

For unusually low trading volume, Diamond and Verrecchia (1987) argue that prohibiting traders from short-selling increases the time needed for the market price to adjust to private information, especially if it is bad news. Thus, under short-selling constraints, the instantaneous price of a stock might not reflect the market expectation of all agents. If some agents receive bad news, they may be inclined not to trade, thus decreasing trading volume. Akbas (2016) invoked this argument and provided evidence from the United States market that an unusually low trading volume signals weak firm fundamentals. The negative relationship between an unusually low trading volume and firm fundamentals becomes more significant for firms with severer short-selling constraints.

Earnings announcements are scheduled regularly every quarter. The management of the firm tries to convey relevant information about expected cash flows to the market through this process. In addition to any information about current

earnings, quarterly announcements also provide substantial details that could help investors acquire better understanding of the firm's prospects. Thus, this information could be used to examine whether any signal received prior to the announcement date contains information about firm fundamentals.

The primary contribution of this study is to examine if an unusual trading volume predicts earnings surprises in China's market. We present evidence that an unusually low trading volume predicts lower cash flow and a higher return, and an unusually high trading volume predicts a lower return, which is partly different from the relationship observed for the markets in the United States and most developed countries. Additionally, we improve the existing methodology by using a fixed effect regression to analyze panel data and focusing on each individual stock rather than portfolios, making the results more reliable.

It is important to study the Chinese market for several reasons. First, the Chinese equity market has expanded rapidly recently. From January 2000 to December 2017, the number of stocks increased from 1,206 to 3,567, and the total market capitalization has exceeded 8.7 trillion dollars. Since China's stock market has become an important part of the global economy and is incorporated into the global capitalization market through Qualified Foreign Institutional Investor (QFII), insights into the Chinese stock market may help global investors make better decisions.

Second, China's stock market is quite different from that of the United States.

There are strict short-selling constraints for the A-share market.² Although there are a few options for index futures, there are no futures or options for individual stocks. Also, individual investors constitute the majority of market participants for China's stock market, but institutional investors are more prominent participants in the stock market of the United States. This discrepancy in markets might lead to different results.

The formal analysis of the relationship between unusual trading volume and earnings surprises in China may reveal whether trading volume provides any information about expected future returns in emerging markets. The rest of the paper is organized as follows. Section 2 presents the methodology and the model. Section 3 describes the data set and the variables. Section 4 presents and analyzes the regression results. Section 5 summarizes and presents the conclusions.

II. Methodology

Akbas (2016) started with the quarterly weighted Fama and MacBeth (1973) regressions, in which the dependent variable is earnings surprises. In this method, the cross-sectional coefficient of unusual trading volume is estimated for each quarter, and then the weighted average of all coefficients is determined.³

$$Surprise_{i,q} = \alpha_q + \beta_{1,q} \times D_{HIGH} + \beta_{2,q} \times D_{LOW} + \beta_{x,q} \times Controls_{i,q} + \varepsilon_{i,q}$$

(1)

² Firms issue two types of shares: A-share and B-share. Class A shares are priced and traded in RMB and among Chinese citizens, while class B shares are traded in foreign currencies. Since the B-share stock market is much smaller than the A-share stock market, our study focuses on A-share stocks.

³ The weight of each quarter's coefficient is based on the number of firms included in the interval.

$$\bar{\beta} = \sum_{q=1}^n w_q \times \beta_q \quad (2)$$

In equation (1), i denotes each firm, and q refers to each quarter. *Surprise* refers to surprises in earnings, measured by standard unexpected earnings (SUE) and cumulative abnormal return (CAR). D_{HIGH} and D_{LOW} are dummy variables, denoting whether the trading volume of a firm i is unusually high or unusually low. *Controls* are other control variables which might influence the earnings surprises. In equation (2), w_q is the weight of estimator β_q in quarter q , and $\bar{\beta}$ is the weighted average of all β_q s.

Though this method could be used to study as many firms as possible, it only considers the impact of time. In addition, the calculation of significance for the weighted average estimator $\bar{\beta}$ is based on the standard deviation of its distribution. However, the standard deviation can only be calculated under the assumption that the values of β_q s in each interval are uncorrelated with each other, which cannot be satisfied strictly.

To solve this problem, we performed a two-way fixed effect regression using the panel data, fixing the time as well as the individuals. The model is the same as that presented in equation (1). $Surprise_{i,q}$ is measured by the standardized unexpected earnings, SUE, and the cumulative abnormal return, CAR, which is explained in the next chapter.⁴

⁴ Besides SUE and CAR, in Akbas (2016) as well as Livnat and Mendenhall (2006), the standardized unexpected earnings using analysts' forecasts (SUEAF) are adopted to measure the earnings surprise. To construct SUEAF, the most recent analysts' forecast over 90 days prior to the earnings announcement date is required. However, different from the Compustat database, the Wind Database only has analysts' forecasts for EPS of the annual report. Thus, the sample would be in the form of yearly panel data. Also, a great number of analysts do not publish their reports in the Wind Database, leading to large bias in the analysts' forecast data. Therefore, SUEAF is not used as an earnings announcement measure in this paper.

III. Data and Variables

A. Sample

The main sample data, retrieved from the Wind Database, were for China's A-share stocks that were traded on the Shanghai Stock Exchange (SSE) and the Shenzhen Stock Exchange (SZSE) between January 2008 and December 2017, over a total of ten years. The use of a longer period causes the scale of the sample to shrink. Moreover, this period includes a steady state (from March 2011 to July 2014), a bullish period (from July 2014 to June 2015) and a bearish period (from June 2015 to February 2016). The Wind Database is a reliable database widely used in the Chinese financial industry. The trading interval of the data is a calendar quarter. Thus, there are 40 intervals for the ten years of data. After removing stocks with missing data and defining financial firms, about 1,200 stocks were selected for analysis. Since there were only 1,494 listed companies in the A-share market until the end of 2007, the fraction of coverage exceeded 78%, thereby roughly representing the majority of the market.



Figure 1 presents the trend of tradable market capitalization from January 2008 to

December 2017.

Note: Average monthly data from the Wind Database are used.

B. Earnings Surprises

Following Akbas (2016), we have adopted two different methods to measure earnings surprises: standardized unexpected earnings using historical accounting information (SUE) and a stock's cumulative abnormal return (CAR).⁵

Let i be each firm and q be each quarter. SUE is the unexpected earnings divided by price, as specified in the following equation:

$$SUE_{iq} = \frac{UE_{iq}}{P_{iq-4}} = \frac{EPS_{iq} - EPS_{iq-4}}{P_{i-4}} \quad (3)$$

Unexpected earnings, UE_{iq} , are constructed by a rolling seasonal random walk (SRW) model: $UE_{iq} = EPS_{iq} - EPS_{iq-4}$. In equation (3), EPS_{iq} is the earnings per share before extraordinary items are disclosed by the announcement of firm i during quarter q . Livnat and Mendenhall (2006) also used the SRW model rather than a time series model to measure earnings surprises. Next, UE_{iq} is divided by P_{iq-4} to obtain SUE_{iq} , the standardized unexpected earnings. P_{iq-4} is the price per share for firm i at the end of the quarter $q-4$. This method has certain advantages. Since the current price of a stock is positively correlated with future cash flows or earnings, this method eliminates the impact of price. Second, most firms disclose EPS each quarter,

⁵ Akbas (2016) also utilized the standardized unexpected earnings using analysts' forecasts, SUEAF, to measure earnings surprise. Due to the lack of quarterly analysts' forecasts for EPS in the Wind Database, this measure is not employed.

leading to a sufficiently large sample. Also, SUE directly reflects a firm's fundamental information, so that we can potentially obtain some information related to future earnings prospects from the unusual trading volume.

To construct the cumulative abnormal return, CAR, we subtract the average value-weighted market return, r_{mq} , from firm i 's average compounded stock return, r_{iq} . The windows of market return and stock return are both a three-day interval around the earnings announcement date. Let t be the earnings announcement date. It should be noted that t of each quarter might differ from firm to firm. Thus, we first calculate the daily CAR:

$$CAR_{it} = \sqrt[3]{(1 + r_{it-1})(1 + r_{it})(1 + r_{it+1})} - \sqrt[3]{(1 + r_{mt-1})(1 + r_{mt})(1 + r_{mt+1})}$$

(4)

Once the daily CAR is calculated, the quarterly cumulative abnormal return, CAR_{iq} , can be filtered from the daily time series, CAR_{it} according to the time series of earnings announcement dates of each firm. Compared with SUE, CAR encompasses opinions about the price of the whole market. Thus, the regression results might provide insight into better prediction of future price movements. However, CAR also has limitations and can be affected by many factors other than cash flow prospects.

C. Unusual trading volume

Gervais, Kaniel and Mingelgrin (2001) compared the trading turnover of a

formation period and that of a reference period to determine if a firm should be marked as a high-volume or a low-volume stock for the United States market. Lo and Wang (2000) argued that trading turnover, defined as shares traded divided by shares outstanding of a company, is a better measure of trading behavior than share volume, dollar volume, or other alternatives. Different from the onefold setting of formation period and reference period, we tried different length and start dates of the two periods to obtain different signals. A stock is categorized as a high-volume or a low-volume stock, depending on whether the average daily turnover of the formation period of the stock exceeds a certain benchmark. Dummy variables, D_{HIGH} and D_{LOW} , will be assigned the value 1 if a firm falls into the high-volume group or the low-volume group, respectively, otherwise it will be assigned 0. Using dummy variables rather than continuous variables enables us to separately measure the unusually high trading volume and unusually low trading volume. This method is also more sensitive to the thick tail of the turnover distribution.

Table I

Parameters	Value
Formation Period	[-6, -2]
Reference Period	[-61, -12]
Threshold for D_{HIGH}	Top 20%
Threshold for D_{LOW}	Bottom 20%

Table I displays the original parameters of D_{HIGH} and D_{LOW} , with the earnings announcement date being set to 0.

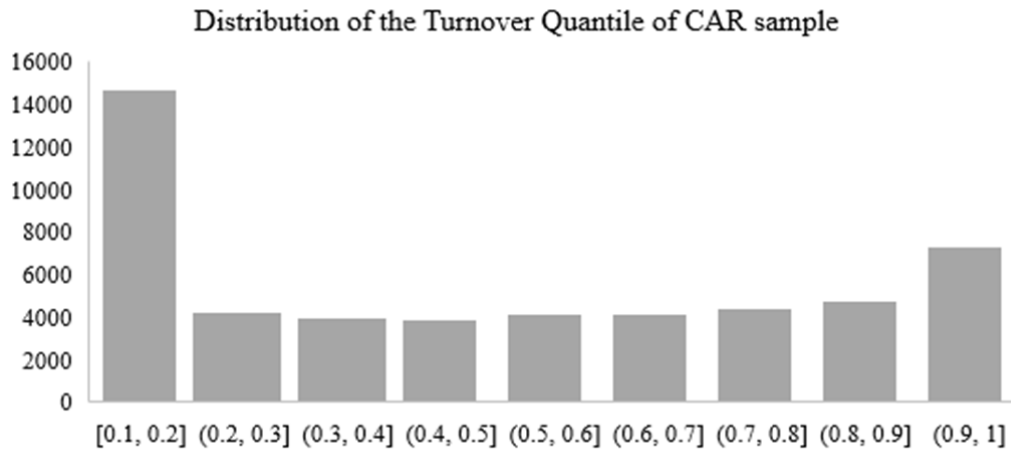


Figure 2

In Figure 2, QTL is the quantile of average daily turnover of the formation period in the time series of average daily turnover of the reference period. Figure 2 shows the thick-tail property of turnover quantiles, confirming the need to use D_HIGH and D_LOW instead of QTL.

D. Other Control Variables

Many studies have found that the size of a firm influences its market return (Banz, 1981; Fama and French, 1992). Thus, a firm's market equity (ME), which is the price multiplied by outstanding shares, is included in this analysis. Also, the ratio of a firm's previous quarter-end book value of common equity (BE) to its market equity (ME) is considered. Logged ME and BM values are used to avoid the skewness of their distributions, and firms with negative BE are excluded. Following Akbas (2016), we calculate RETR and RETF, which represent the average daily

return of the reference period ([-61, -12]) and the formation period ([-6, -2])⁶ right before the earnings announcement date, respectively. IVOL, the standard deviation of daily return over the 10-day period [-11, -2], is also included. Next, following Nofsinger and Sias (1999), we identified a strong positive correlation between institutional ownership and stock returns. Thus, IO, the ratio of the firm's institutional ownership, is considered. If a firm has an occasionally missing IO but has previously reported the values before and after the gap, we fill in the missing information with a linearly interpolated IO value. TURNR, the average turnover over the reference period [-61, -12], is also included. Finally, the earnings surprise in the previous interval is incorporated and marked with LAG.

E. Divergence of Opinion Measures

Berkman et al. (2009) used three proxies to measure difference of opinion, DISP, RETVOL, and TURN. DISP is the standard deviation of analysts' forecasts of EPS. However, the analysis of EPS in the Wind Database is updated only yearly for the annual report, and these records are also incomplete. Thus, DISP is not considered in this analysis, but the other two proxies, RETVOL and TURN, are used. RETVOL is the standard deviation of the excess daily return relative to the market return around the earnings announcement date. TURN is the average daily turnover surrounding a quarterly announcement. RETVOL and TURN reflect direct information about the

⁶ Since the interval of CAR is [-1, 1], the end of the formation period is the second day prior to the earnings announcement date to avoid overlapping and examine the predictive ability. A week is placed between the reference period and the formation period to mitigate the autocorrelation effect in turnover. Moreover, when testing different windows of the formation period and the reference period, RETF, RETR, and TURNR will also be adjusted.

divergence of opinion of market participants, since the price and the quantity of equity reflect the valuation of all agents.

IV. Estimation

A. Summary Statistics

We constructed two subsamples, the SUE sample and the CAR sample, according to the method employed to measure earnings surprises. The two subsamples extend from the start of 2008 to the end of 2017, giving a total of 40 quarters. The SUE sample includes 1,180 A-share stocks, with 47,200 observations in total. The CAR sample includes 1,283 A-share stocks, with 51,320 observations in total. This difference in the number of observations is because of the fact that some firms do not release earnings announcements every season, which results in missing SUE data. We next excluded firms that fell into the categories of “Banks” and “Non-bank Financials” according to the SWS industry classification.⁷ To calculate the panel data statistics, we obtained cross-sectional statistics of each quarter and took the time-series average. The crucial independent variables, D_HIGH and D_LOW, are included but not presented in the table because they are dummy variables. In these two samples, the formation period is [-5, -1], and the reference period is [-55, -6]. If the average daily turnover of the formation period exceeds the 80th quantile of the average daily turnover time series of the 10-week reference period, D_HIGH is

⁷ In China, the SWS industry classification is a standard widely used in the financial field.

marked as 1. If the average daily turnover of the formation period is less than the 20th quantile of the reference period, D_LOW is marked as 1.⁸

Table II

	Mean	Median	STD	Min	P_25	P_75	Max
<i>SUE</i>	0.125%	0.036%	3.239%	-29.942%	-0.639%	0.695%	37.922%
<i>logSIZE</i>	22.216	22.072	0.897	20.077	21.572	22.711	26.741
<i>logBM</i>	-1.420	-1.409	0.861	-4.742	-2.003	-0.814	1.760
<i>IO</i>	40.448	40.027	20.059	0.107	25.606	54.901	100.268
<i>RETR</i>	3.964%	2.038%	17.195%	-54.326%	-6.146%	11.900%	141.015%
<i>RETF</i>	-0.186%	-0.384%	5.965%	-34.086%	-3.831%	3.047%	35.725%
<i>TURNR</i>	0.021	0.018	0.016	0.000	0.012	0.027	0.140
<i>IVOL</i>	0.448	0.312	0.531	0.000	0.180	0.539	8.051
<i>QTL</i>	0.529	0.510	0.305	0.100	0.268	0.790	1.000

⁸ Akbas (2016) uses 20% as the threshold to determine D_HIGH and D_LOW values; Gervais, Kaniel and Mingelgrin (2001) use 10% as the threshold.

Panel B: CAR Sample							
Sample Period: 2008 Q1 -2017 Q4(40 Quarters)							
Number of Stocks: 1,283							
Number of Observations: 51,320							
	Mean	Median	STD	Min	P_25	P_75	Max
<i>CAR</i>	-0.090%	-0.159%	1.589%	-11.670%	-0.942%	0.671%	9.084%
<i>logSIZE</i>	22.197	22.044	0.927	20.053	21.542	22.697	27.480
<i>logBM</i>	-1.453	-1.464	0.870	-4.742	-2.047	-0.843	1.980
<i>IO</i>	40.207	39.884	20.541	0.095	25.103	54.989	106.409
<i>RETR</i>	3.896%	1.972%	17.255%	-55.876%	-6.231%	11.892%	143.811%
<i>RETF</i>	-0.204%	-0.402%	6.003%	-35.539%	-3.838%	3.022%	36.298%
<i>TURNR</i>	0.022	0.018	0.016	0.000	0.012	0.028	0.149
<i>IVOL</i>	0.458	0.318	0.545	0.000	0.183	0.553	8.254
<i>QTL</i>	0.527	0.510	0.305	0.100	0.260	0.790	1.000

Table II presents the time-series averages of summary statistics of dependent and independent variables in each quarter. Panel A describes the SUE sample. SUE is equal to the difference in EPS between quarter q and quarter $q-4$ divided by the price per share in quarter $q-4$. It is presented in percentage form. Panel B shows the statistics for the CAR sample. CAR is defined as the average compounded return of the stock around the earnings announcement date subtracted by that of the market. Both samples span 10 years, 40 quarters from 2008 Q1 to 2017 Q4. CAR is also presented in percentage form. Other control variables are also included in both panels. To determine $\log\text{SIZE}$, we multiplied the price per share by the share number. $\log\text{BM}$ is the log of the ratio of the book value to the equity market value. Defining the earnings announcement date as day 0, we denote the stock return over the period $[-61,$

-12] as RETR and the stock return over the period [-6, -2] as RETF. These are both presented as percentages. TURNR is the average turnover for the same period as RETR. IVOL is the standard deviation of daily return over the period [-11, -2]. Since D_HIGH and D_LOW are dummy variables, they are not included and are replaced by QTL. QTL is the quantile of the average turnover of the formation period in the average turnover of the reference period and is presented in percentage form.

All variables are quite similar except SUE and CAR. The mean of SUE is 0.125% and that of CAR is -0.090%. This indicates that the two methods capture different parts of the earnings surprises. SUE captures more information about firm fundamentals, and CAR better reflects the opinions of market participants.

Moreover, the correlation between SUE and CAR is quite low. Since the stock pool of the SUE sample is a subset of that of the CAR sample, we use the stock lists of the SUE sample as the pool and calculate the correlation coefficients between SUE and CAR. As observed in Table III, the correlation coefficient of the whole time period is about 0.03, and the time-series average of the quarterly correlation coefficients is 0.057. The low correlation suggests that the current cash flow might not be an important factor for investors to determine the value of their stocks. This is also different from the situation in the United States.⁹

⁹ Livnat and Mendenhall (2006) report that the correlation between SUE and CAR is around 0.2 for the United States stock market.

Table III

Total Correlation Coefficient	0.0297
Time-series Average of Quarterly Correlation Coefficients	0.0570

B. Portfolio Analysis

RETVOL and TURN express differences of opinion of the market in the form of price and relative quantity. The periods are the 10-day periods [-10, -1] prior to the earnings announcement date. The correlation coefficients between the whole time series of RETVOL, TURN, and QTL of stocks in the CAR sample are displayed in Table IV.

Table IV

	RETVOL	TURN	QTL
RETVOL	1	0.49	0.35
TURN	0.49	1	0.46
QTL	0.35	0.46	1

To further explore the relation between divergence of opinion and extreme trading volume, stocks in the CAR sample are analyzed by portfolio type. In each quarter, stocks fall into five categories, V1 to V5, according to QTL.¹⁰ All stocks marked as D_HIGH fall into V5, and all stocks marked as D_LOW fall into V1.

¹⁰ The stocks with QTL from 0.1 to 0.2 fall into V1; QTL from 0.3 to 0.4, V2; QTL from 0.5 to 0.6, V3; QTL from 0.7 to 0.8, V4; and QTL from 0.9 to 1.0, V5.

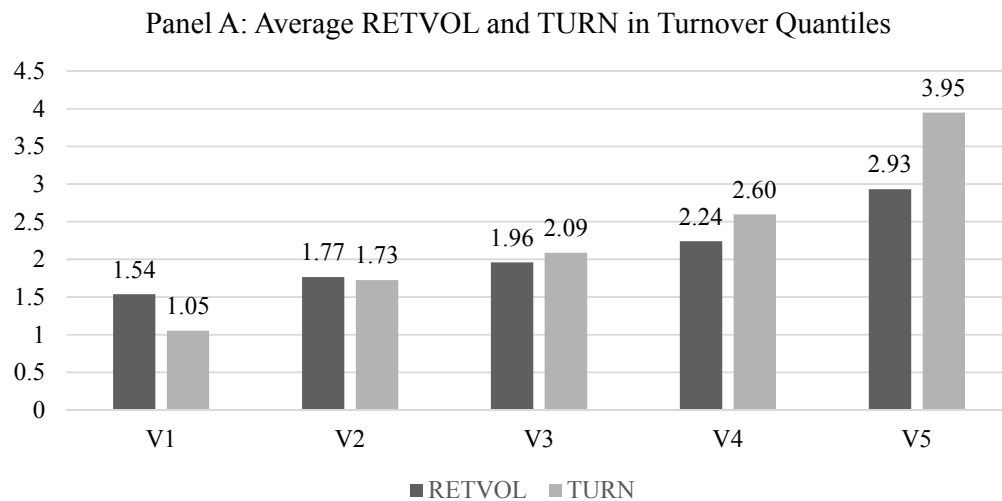
$\Delta RETVOL$ and $\Delta TURN$ represent the differences over period [1,10] and period [-10,-1], reflecting the change in divergence of opinion close to the release of the earnings announcement.

Panel A of Figure 3 shows a linear pattern. Stocks with higher QTL tend to experience a higher degree of divergence of opinion than those with lower QTL. Both trends of $RETVOL$ and $TURN$ substantiate the explanation that stocks with greater divergence of opinion also tend to have higher volume.

Panel B provides additional support for this explanation. Opinions concerning stocks with higher divergence of opinion would decline around the earnings announcement date. However, stocks with a relatively lower difference of opinion tend to experience a divergence of opinion around the earnings announcement date.

This pattern of divergence of opinion around the earnings announcement date helps to explain the regression results of the CAR sample, the reason for the positive signal of unusually low trading volume, and the negative signal of unusually high trading volume.

Figure 3



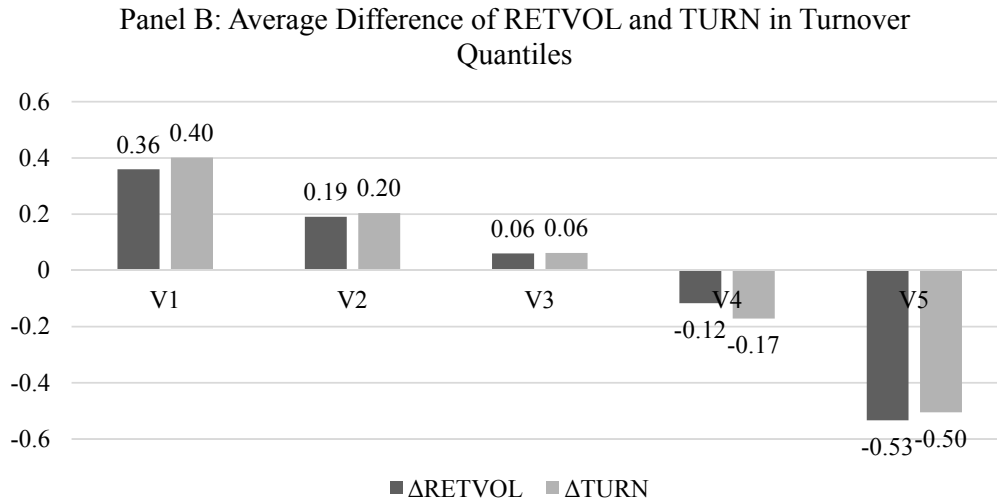


Figure 3 displays time-series averages of the measure for divergence of opinion for portfolios. Stocks are classified into five groups to represent five intervals of turnover quantiles. In panel A, RETVOL is the standard deviation of excess daily return relative to the market return over the $[-10, -1]$ window prior to the earnings announcement date. TURN is the average daily turnover over the same period as RETVOL. TURN and $\Delta TURN$ are multiplied by 100 in order to fall in the similar range of RETVOL and $\Delta RETVOL$. In panel B, $\Delta RETVOL$ is the difference between the RETVOL over the $[1, 10]$ window and the $[-10, -1]$ window. We used the CAR sample for this analysis, which includes 1,283 stocks and is larger and more complete than the SUE sample.

C. Estimation

1. Regression for the CAR sample

In Table V, the dependent variable is CAR. Fixed effect regressions are

performed. To present the results more clearly, CAR and CARlag values are multiplied by 100 and denoted as CAR' and CARlag'. RETR and RETF are multiplied by 100 and denoted as RETR' and RETF'. Linear transformation does not change the results or the significance of the regressions. Both estimates of the two-way fixed effect regression and the one-way fixed effect regression for D_HIGH are negative and significant at the 1% level, while the estimates of the two-way fixed effect regression and the one-way fixed effect regression for D_LOW are both positive and significant at the 5% level.

This result is different from that predicted for the United States market and refutes the explanation of visibility, which claims that an extremely high trading volume would increase the visibility of the stock, leading to a rise in the stock prospects of optimistic holders. However, the unusually high volume indicates a wide divergence of opinion about the prospects of the stock. Due to short-sale constraints, the prices of these stocks are upwardly biased according to Miller's (1977) theory. Therefore, stocks may experience negative return around the earnings announcement date if the divergence of opinion subsides, which is the reason for the negative coefficient of D_HIGH. Also, stocks with increased divergence of opinion experience a positive return, which explains the positive coefficient of D_HIGH.

In conclusion, the results shown in Table V confirm that a change in the difference of opinion leads to a movement in price close to the earnings announcement date. In this process, an unusual trading volume indicates the degree of divergence of opinion and signals the direction of the change of price, which could be

reflected by cumulative abnormal return.

Table V
Unusual trading volume and CAR'

	Two-Way Fixed Effect	One-Way Fixed Effect
	CAR'	CAR'
CARlag'	0.037*** (0.0000)	0.062*** (0.0000)
logSIZE	-27.401*** (0.0000)	-4.453*** (0.0000)
logBM	1.838 (0.3196)	2.608*** (0.0023)
D_HIGH	-17.094*** (0.0000)	-16.836*** (0.0000)
D_LOW	4.022** (0.0266)	3.512** (0.0493)
IO	0.340*** (0.0000)	0.108** (0.0103)
RETR'	-0.081* (0.0549)	-0.119*** (0.0045)
RETF'	-0.541*** (0.0000)	-0.490*** (0.0000)
TURNR	-504.096*** (0.0000)	-550.413*** (0.0000)
IVOL	-1.056 (0.4504)	-2.318* (0.0675)
Adjusted R2	0.027	0.024

Table V presents the fixed effect regression results of the CAR panel data. The first

column represents the two-way fixed effect regression, fixing the time as well as the individuals. The second column is the one-way fixed effect regression, fixing the time only. CAR' is computed by subtracting the average compounded return of the market from that of the stock around the earnings announcement date and then multiplying by 100. CARlag' is the CAR' value from the previous quarter. D_HIGH and D_LOW are dummy variables. These variables are equal to 1 if the daily average turnover of the formation period is in the top or bottom 20% of the 10-week daily average turnover series, otherwise they are 0. The p-values are presented under the coefficient estimates. *, **, and *** indicate statistical significance at the 10%, 5%, and 1% levels, respectively.

2. Regression for the SUE sample

Similar to the regression performed on the CAR sample, SUE and SUElag are multiplied by 100 and denoted as SUE' and SUElag'. Also, RETR and RETF are multiplied by 100 and denoted as RETR' and RETF'. In the data presented in Table VI, it is obvious that the coefficients of D_LOW are both negative. For both two-way and one-way fixed effect regressions, this value is statistically significant at the 10% level. Stocks with an unusually low trading volume ahead of the earnings announcement date are prone to have lower standard unexpected earnings, which means deteriorated cash flow quality. This effect was not explained by firm size, book-to-market ratio, institutional ownership, trading volume, stock return, return

volatility, or SUE in the previous quarter.

However, the coefficient of D_HIGH remains insignificant for stocks in China's market. This is the same finding as that of Ferhat (2016) for stocks in the United States. The fact that high volume stocks do not play an informational role to predict surprises in a firm's cash flows could be explained by high divergence of opinion. Market participants have different expectations of stock prospects, so unusually high trading volume does not have strong predictive power.

D_LOW is accompanied by less divergence of opinion and a consensus about relatively lower standard unexpected earnings. Thus, it could be concluded that unusually low trading volume contains unfavorable information about the future cash flow of the stock. However, after the EPS of a specific quarter is disclosed, the market digests this piece of information, and there may be an overshoot of the stock price, leading to positive return. This is consistent with the positive coefficients of D_LOW in the CAR' regressions.

Table VI

Unusual trading volume and SUE

	Two-Way Fixed Effect	One-Way Fixed Effect
	SUE'	SUE'
SUElag'	0.366*** (0.0000)	0.373*** (0.0000)
logSIZE	-0.168*** (0.0015)	-0.004 (0.8444)
logBM	-0.163*** (0.0001)	-0.004 (0.8373)
D_HIGH	0.038 (0.3974)	0.043 (0.3220)
D_LOW	-0.080* (0.0530)	-0.085** (0.0345)
IO	0.001 (0.4023)	0.001 (0.1708)
RETR'	0.007*** (0.0000)	0.007*** (0.0000)
RETF'	0.012*** (0.0000)	0.011*** (0.0000)
TURNR	-0.251 (0.8445)	-0.364 (0.7511)
IVOL	0.144*** (0.0000)	0.110*** (0.0002)
Adjusted R2	0.152	0.166

Table VI presents the fixed effect regression results of the SUE panel data. The first column shows the two-way fixed effect regression, fixing the time as well as the

individuals. The second column is the one-way fixed effect regression, fixing the time only. SUE, equals the difference in EPS between quarter q and quarter q-4 divided by the price per share in quarter q-4. SUElag' is the SUE' in the previous quarter. D_HIGH and D_LOW are dummy variables. They are equal to 1 if the daily average turnover of the formation period is in the top or bottom 20% of the 10-week daily average turnover series, otherwise they are equal to 0. The p-values are presented under the coefficient estimates. *, **, and *** indicate statistical significance at the 10%, 5%, and 1% levels, respectively.

D. Alternative Definition of Unusual Trading Volume

To check the robustness of the regressions above, we repeated the regressions by using different reference periods and formation periods to define new values of D_HIGH and D_LOW. Other variables, RETF', RETR', TURNR, and IVOL were also adjusted according to the new parameters. RETF' and RETR' represent the return over the formation period and the reference period, respectively, and are multiplied by 100. TURNR is the return over the reference period. The window of IVOL is twice the length of the formation period and ends on the day immediately prior to the earnings announcement date.

Table VII

Panel A: SUE regressions					
Reference Period	Formation Period	Two-Way Fixed Effect		One-Way Fixed Effect	
		D_HIGH	D_LOW	D_HIGH	D_LOW
[-65, -11]	[-5, -1]	0.032 (0.4788)	-0.081* (0.0529)	0.039 (0.3743)	-0.085** (0.0367)
[-72, -13]	[-6, -1]	0.052 (0.2415)	-0.080* (0.0537)	0.059 (0.1752)	-0.086** (0.0343)
[-70, -15]	[-7, -1]	0.016 (0.7090)	-0.083** (0.0422)	0.023 (0.5913)	-0.087** (0.0301)

Panel B: CAR regressions					
Reference Period	Formation Period	Two-Way Fixed Effect		One-Way Fixed Effect	
		D_HIGH	D_LOW	D_HIGH	D_LOW
[-65, -11]	[-5, -1]	-19.807*** (0.0000)	4.633** (0.0118)	-19.097*** (0.0000)	4.012** (0.0268)
[-72, -13]	[-6, -1]	-17.991*** (0.0000)	3.481* (0.0570)	-17.207*** (0.0000)	3.181* (0.0773)
[-70, -15]	[-7, -1]	-14.208*** (0.0000)	3.681** (0.0410)	-13.391*** (0.0000)	3.394* (0.0558)

Table VII presents the respective coefficients of D_HIGH and D_LOW in the case of alternative unusual trading volume definitions. The first and the second columns in the panel specify the new definitions of reference period and formation period. For example, [-65, -11] means we take the 55-day period, ending 11 days prior to the earnings announcement date, as the reference period. The parameter for calculating RETR', D_HIGH, and D_LOW is adjusted accordingly. The coefficients of D_HIGH and D_LOW and their p-values are presented respectively for the SUE panel and the CAR panel.

We extended the windows of the reference period and the formation period. The results are presented in Table VII and suggest that the coefficient of an unusually low trading volume in the SUE regression remain statistically significant at a slightly lower significance level as the window is extended. As for the CAR sample, the coefficient for unusually high trading volume retains statistical significance at the 1% level, while that for unusually low trading volume, in general, remains statistically significant only at a higher significance level (10%). Generally speaking, the relation between unusual trading volume and earnings surprises is robust.

V. Conclusion

In this study, we investigated the relationship between an unusual trading volume and earnings surprises in China's market, a market in which short-selling

constraints are strictly enforced, and market efficiency is lower than that in developed countries. In terms of stock return, stocks with unusually low trading volumes tend to experience positive returns, and stocks with unusually high trading volume are more prone to have negative returns around the earnings announcement date. This could be explained by Miller's (1977) theory that the price of stocks with a higher divergence of opinion is upwardly biased. In China's market, stocks with an unusually high trading volume typically have higher divergence of opinion prior to the earnings announcement date and are likely to experience convergence of opinion around that date, leading to relatively lower returns compared to the market. The situation is opposite for stocks with an unusually low trading volume.

Our analysis reveals that unusually low trading volume contains negative information about firm fundamentals, as measured by a standard earnings surprise. According to Diamond and Verrecchia (1987), in a market with short sale constraints, informed agents choose not to trade if they privately receive bad news. Also, low trading volume is related to low divergence of opinion. Positive return is a correction of the overshoot caused by consensus opinion of the stock's poor future cash flow.

The relationship between an unusually low trading volume and cumulative abnormal return (CAR) is robust to changing definitions of the reference period and the formation period, as well as different definitions of unusually high or low trading volume or other control variables like RETF, RETR, TURNR, and IVOL. The relationship between unusually low trading volume and standard unexpected earnings (SUE) is also robust.

References

- Akbas, F. (2016). The calm before the storm. *The Journal of Finance*, 71(1), 225-266.
- Banz, R. W. . (1981). The relationship between return and market value of common stocks. *Journal of Financial Economics*, 9(1), 3-18.
- Banerjee, S., & Kremer, I. (2010). Disagreement and learning: Dynamic patterns of trade. *The Journal of Finance*, 65(4), 1269-1302.
- Berkman, H., Dimitrov, V., Jain, P. C., Koch, P. D., & Tice, S. (2009). Sell on the news: Differences of opinion, short-sales constraints, and returns around earnings announcements. *Journal of Financial Economics*, 92(3), 376-399.
- Chen, G. M., Firth, M., & Rui, O. M. (2001). The dynamic relation between stock returns, trading volume, and volatility. *The Financial Review*, 36(3), 153-174.
- Diamond, D. W., & Verrecchia, R. E. (1987). Constraints on short-selling and asset price adjustment to private information. *Journal of Financial Economics*, 18(2), 277-311.
- Fama, E. F., & French, K. R. (1992). The cross-section of expected stock returns. *The Journal of Finance*, 47(2), 427-465.
- Fama, E. F., & MacBeth, J. D. (1973). Risk, return, and equilibrium: Empirical tests. *Journal of Political Economy*, 81(3), 607-636.
- Gervais, S., Kaniel, R., & Mingelgrin, D. H. (2001). The high volume return premium.

The Journal of Finance, 56(3), 877-919.

Kaniel, R., Ozoguz, A., & Starks, L. (2012). The high volume return premium: Cross-country evidence. *Journal of Financial Economics*, 103(2), 255-279.

Livnat, J., & Mendenhall, R. R. (2006). Comparing the post-earnings announcement drift for surprises calculated from analyst and time series forecasts. *Journal of Accounting Research*, 44(1), 177-205.

Lo, A. W., & Wang, J. (2000). Trading volume: definitions, data analysis, and implications of portfolio theory. *The Review of Financial Studies*, 13(2), 257-300.

Mayshar, J. (1983). On divergence of opinion and imperfections in capital markets. *The American Economic Review*, 73(1), 114-128.

Miller, E. M. (1977). Risk, uncertainty, and divergence of opinion. *The Journal of Finance*, 32(4), 1151-1168.

Nofsinger, J. R., & Sias, R. W. (1999). Herding and feedback trading by institutional and individual investors. *The Journal of Finance*, 54(6), 2263-2295.