



Munich Personal RePEc Archive

**Time Varying Heteroskedastic Realized
GARCH models for tracking
measurement error bias in volatility
forecasting**

Gerlach, Richard and Naimoli, Antonio and Storti, Giuseppe

University of Sydney, University of Salerno, University of Salerno

12 March 2020

Online at <https://mpra.ub.uni-muenchen.de/99082/>

MPRA Paper No. 99082, posted 18 Mar 2020 07:45 UTC

Time-Varying Realized GARCH models for tracking measurement error bias in volatility forecasting

12th March 2020

*Richard Gerlach*¹, *Antonio Naimoli*² and *Giuseppe Storti*² *

1. The University of Sydney – Business School

2. University of Salerno – Department of Economics and Statistics

Abstract

This paper proposes novel approaches to the modeling of attenuation bias effects in volatility forecasting. Our strategy relies on suitable generalizations of the Realized GARCH model by Hansen et al. (2012) where the impact of lagged realized measures on the current conditional variance is weighted according to the accuracy of the measure itself at that specific time point. This feature allows to assign more weight to lagged volatilities when they are more accurately measured. The merits of the proposed specifications are assessed by means of an application to the prediction of Value at Risk (VaR) and Expected Shortfall (ES) for a set of stock market indices. The results of the empirical analysis show that the proposed specifications are able to outperform standard Realized GARCH models in VaR and ES forecasting.

JEL Codes: C58, C22 ,C53.

Keywords: Realized GARCH, Realized Volatility, Realized Quarticity, Attenuation Bias, Measurement Error, Tail Risk Forecasting.

*Corresponding author. Address for correspondence: Dipartimento di Scienze Economiche e Statistiche, Università degli studi di Salerno, Via Giovanni Paolo II, 132, 84084 Fisciano (SA), Italy. Email: storti@unisa.it. Office phone: 0039 089 962212.

1 Introduction

It is widely acknowledged that the use of realized volatility measures (Hansen and Lunde, 2011) can be beneficial for improving the accuracy of volatility forecasts on a daily scale. This is typically done by choosing one of the following approaches.

First, dynamic models can be directly fitted to time series of realized measures. Examples include the Heterogeneous AutoRegressive (HAR) (Corsi, 2009) and the class of Multiplicative Error Models (MEM) (Engle, 2002; Engle and Gallo, 2006). A drawback of this approach is that the focus is on the estimation of the expected level of the realized measure, rather than on the estimation of the conditional variance of returns. As it will be clarified in the next section, realized measures are designed to consistently estimate the integrated variance which is related to, but different, from the conditional variance. Namely, in the absence of microstructure noise and jumps, the integrated variance can be interpreted as an unbiased estimator of the conditional variance of returns.

The second approach makes use of time series models for daily returns, e.g. GARCH-type models, where the conditional variance is driven by one or more realized measures. The main idea is to replace a noisy volatility proxy, such as the squared daily returns used in standard GARCH models, with a more efficient realized measure. Differently from the above-mentioned approach, in this case, both low (daily returns) and high (realized measures) frequency information are employed in the model. Examples of models falling within this class include the HEAVY model of Shephard and Shephard (2010) and the Realized GARCH model of Hansen et al. (2012). These two models are closely related but, nevertheless, they are characterized by some distinctive features. Realized GARCH models include a measurement equation allowing to gain, in a fully data-driven fashion, deeper insight on the statistical properties of the realized measure and its relationship with the latent volatility. In addition, the measurement equation offers a convenient framework for simulation and generation of multi-step ahead forecasts. Differently, in HEAVY models, the generation of multi-step ahead forecasts is guaranteed by the inclusion of an additional dynamic updating equation for the conditional expectation of the chosen realized measure.

A complication arising with both approaches is that realized measures are noisy estimates of the underlying integrated variance, generating a classical errors-in-variables problem. This typically leads to the rise of what is often called attenuation bias. More precisely, the estimated response of the conditional variance to the past realized measure will be negatively biased, compared to what we would have found replacing the realized measure by the latent integrated variance. Although it is evident that correcting for this attenuation bias can potentially lead to improved volatility forecasts, this issue has not yet received much attention in the literature. Recently, Bollerslev et al. (2016) found that, in a HAR model, letting the volatility persistence depend on the estimated degree of measurement error leads to some improvement in the model's predictive performance. In the same spirit, Buccheri and Corsi (2019) propose time-varying parameters HAR models that can account for both measurement errors and non-linearities in the dynamics of realized measures. Moving to a GARCH framework, Shephard and Xiu (2016) found evidence that, in a GARCH-X model, the magnitude of the response coefficients associated with different realized volatility measures is related to the quality of the measure itself. Finally, Hansen and Huang (2016) observed that the response of the current conditional variance to past unexpected volatility shocks is negatively correlated with the accuracy of the associated realized

volatility measure.

Our contribution to research in this field is twofold. First, we develop extensions of the standard log-linear Realized GARCH model that account for time-varying attenuation bias effects in the conditional variance dynamics. This is achieved by allowing the coefficients of the dynamic volatility updating equation of the standard log-linear Realized GARCH model to vary over time as a function of an estimator of the asymptotic variance of the realized measure. For the realized variance estimator, this is given by a rescaling of the integrated quarticity of intra-daily returns while, for the log-transformed realized variance, Corsi et al. (2008) show that the asymptotic variance depends on the ratio of the integrated quarticity of intra-daily returns to the squared integrated variance. As a consequence, the resulting model will give more weight to lagged volatilities when these are more accurately measured. Second, we empirically assess the impact of time-varying attenuation bias on tail risk forecasting.

The paper is organized as follows. Section 2 reviews the basic theoretical framework behind the computation of realized measures and Section 3 discusses the Realized GARCH model of Hansen et al. (2012). In Section 4, we then provide theoretical and empirical insight on the occurrence of attenuation bias effects in Realized GARCH models while Section 5 illustrates the proposed time-varying parameters Realized GARCH models. Section 6 focuses on the associated estimation and inference procedures and Section 7 illustrates the results of an application to tail risk forecasting for a set of international stock market indices. Finally, Section 8 concludes.

2 Realized measures: a short review

In recent years, the availability of high-frequency financial market data has enabled researchers to build reliable measures of the latent daily volatility based on the use of intra-daily returns. In the econometric and financial literature, these are widely known as realized volatility measures. The theoretical background to these measures is given by the dynamic specification of the price process in continuous time. Formally, let the logarithmic price p_t of a financial asset be determined by the stochastic differential process

$$dp_t = \mu_t dt + \sigma_t dW_t \quad 0 \leq t \leq T, \quad (1)$$

where μ_t and σ_t are the drift and instantaneous volatility processes, respectively, whilst W_t is a standard Brownian motion; σ_t is assumed to be independent of W_t . Under assumption of a frictionless market, the logarithmic price p_t follows a semi-martingale process.

In that case, given a sequence of partitions $t - 1 = \tau_0 \leq \tau_1 \leq \dots \leq \tau_M = t$, the Quadratic Variation (QV) of log-returns $r_t = p_t - p_{t-1}$, given by

$$QV_t = \underset{M \rightarrow \infty}{plim} \sum_{j=0}^{M-1} (p_{\tau_{j+1}} - p_{\tau_j})^2,$$

coincides with the Integrated Variance (IV)

$$IV_t = \int_{t-1}^t \sigma_s^2 ds. \quad (2)$$

In the absence of microstructure noise and measurement error, [Barndorff-Nielsen and Shephard \(2002\)](#) show that IV is consistently estimated by Realized Volatility (RV)

$$RV_t = \sum_{i=1}^M r_{t,i}^2, \quad (3)$$

where

$$r_{t,i} = p_{t-1+i\Delta} - p_{t-1+(i-1)\Delta}$$

is the i -th Δ -period intraday return, $M = 1/\Delta$. Although IV and the conditional variance of returns do not coincide, there is a precise relationship between these two quantities: under standard integrability conditions ([Andersen et al., 2001](#)) it can be shown that

$$E(IV_t | \mathcal{F}_{t-1}) = \text{var}(r_t | \mathcal{F}_{t-1}), \quad (4)$$

where \mathcal{F}_{t-1} denotes the information set at time $(t-1)$. In other words, the optimal forecast of IV can be interpreted as the conditional variance of returns and the difference between these two quantities is given by a zero mean error.

[Barndorff-Nielsen and Shephard \(2002\)](#) show that RV consistently estimates the true latent volatility, when $\Delta \rightarrow 0$. They also find that, conditional on the observed realization of IV_t , the asymptotic distribution of RV_t is Normal

$$\frac{\sqrt{M}(RV_t - IV_t)}{\sqrt{2IQ_t}} \xrightarrow{d} N(0, 1), \quad (5)$$

where $IQ_t = \int_{t-1}^t \sigma_s^4 ds$ is the Integrated Quarticity (IQ). This, in turn, can be consistently estimated as

$$RQ_t = \frac{M}{3} \sum_{i=1}^M r_{t,i}^4. \quad (6)$$

Replacing IQ_t by RQ_t in equation (5) still gives

$$\frac{\sqrt{M}(RV_t - IV_t)}{\sqrt{2RQ_t}} \xrightarrow{d} N(0, 1). \quad (7)$$

In financial modeling, the use of $\log(RV_t)$ is often preferred to the ‘‘plain’’ RV_t estimator due to its better finite sample properties (see [Corsi et al. \(2008\)](#), among others). The approximate asymptotic distribution of $\log(RV_t)$ can be shown to be given by

$$\frac{(\log(RV_t) - \log(IV_t))}{\sqrt{\frac{2RQ_t}{MRV_t^2}}} \xrightarrow{d} N(0, 1). \quad (8)$$

Furthermore, [Corsi et al. \(2008\)](#) provide empirical evidence that, in a HAR model, choosing the logarithmic realized variance as a dependent variable and allowing for time-varying volatility of realized volatility leads to substantial improvements in fit and forecasting performance.

3 Realized GARCH models

The Realized GARCH (RGARCH), introduced by [Hansen et al. \(2012\)](#), extends the class of GARCH models by first replacing squared returns, as the driver of the

volatility dynamics, with a more efficient proxy, such as a RV measure. With this change alone, the resulting specification can be seen as a GARCH-X model, where the realized measure is used as an explanatory variable. A second extension is that the Realized GARCH “completes” the GARCH-X, by adding a measurement equation that explicitly models the contemporaneous relationship between the realized measure and the latent conditional variance.

Formally, let $\{r_t\}$ be a time series of stock returns and $\{x_t\}$ be a time series of realized measures of volatility. Focus here is on the logarithmic RGARCH model, defined via

$$r_t = \mu_t + \sqrt{\tilde{h}_t} z_t, \quad (9)$$

$$\tilde{h}_t = \omega + \beta \tilde{h}_{t-1} + \gamma \tilde{x}_{t-1}, \quad (10)$$

$$\tilde{x}_t = \xi + \varphi \tilde{h}_t + \tau(z_t) + u_t, \quad (11)$$

where $\tilde{x}_t = \log(x_t)$, $h_t = \text{var}(r_t | \mathcal{F}_{t-1})$ is the conditional variance and $\tilde{h}_t = \log(h_t)$. To simplify the exposition, in the remainder, it is assumed that the conditional mean $\mu_t = E(r_t | \mathcal{F}_{t-1}) = 0$. The innovations z_t and u_t are assumed to be mutually independent, with $z_t \underset{iid}{\sim} (0, 1)$ and $u_t \underset{iid}{\sim} (0, \sigma_u^2)$.

The function $\tau(z_t)$ can accommodate leverage effects, since it captures the dependence between returns and future volatility. A common choice (see e.g. [Hansen et al. \(2012\)](#)), found to be empirically satisfactory, is

$$\tau(z_t) = \tau_1 z_t + \tau_2 (z_t^2 - 1).$$

Substituting the measurement equation into the volatility equation, the model implies an AR(1) representation for \tilde{h}_t

$$\tilde{h}_t = (\omega + \xi \gamma) + (\beta + \varphi \gamma) \tilde{h}_{t-1} + \gamma w_{t-1}, \quad (12)$$

where $w_t = \tau(z_t) + u_t$ and $E(w_t) = 0$. The coefficient $(\beta + \varphi \gamma)$ reflects the persistence in (the logarithm of) volatility, whereas γ represents the impact of both the lagged return and realized measure on future (log-)volatility. To ensure that the \tilde{h}_t is stationary, the required restriction is $\beta + \varphi \gamma < 1$. Estimation of model parameters can be easily performed by numerically maximizing a Gaussian Quasi-Likelihood (QL) function. Regarding the statistical properties of these estimates, [Li et al. \(2019\)](#) have recently formally proved their consistency and asymptotic normality for the log-linear RGARCH model.

Compared to the linear RGARCH, the log-linear specification has two main advantages: first, it is more flexible, since no constraints on the parameters are required in order to ensure positivity of the conditional variance, which holds automatically by construction; second, the logarithmic transformation substantially reduces the heteroskedasticity of the measurement equation error term. For these reasons, this paper exclusively focuses on the log-linear specification of the Realized GARCH model.

4 Attenuation-bias effects in RGARCH models

In this section, our aim is to provide some insight on the arising of attenuation bias effects in RGARCH models. In order to simplify the exposition, without implying any

loss of generality, we assume that there are no leverage effects in the measurement equation ($\tau_1 = \tau_2 = 0$) and exclude complications related to microstructure noise and jumps. Also, we assume stationarity of the RGARCH processes considered in the remainder of this section.

To start, let us consider a simple log-linear RGARCH model of order (1,0) where the realized measure is replaced by the latent IV_t . Referring to the notation defined in the previous section, the resulting specification can be reformulated as an AR(1) for $\widetilde{IV}_t = \log(IV_t)$

$$\widetilde{IV}_t = \mu_I + \pi_I \widetilde{IV}_{t-1} + u_{t,I}, \quad (13)$$

where $u_{t,I}$ is assumed to be a sequence of zero mean iid errors with finite variance $\sigma_{u,I}^2$, $\mu_I = \omega_I \phi_I + \xi_I$ and $\pi_I = \phi_I \gamma_I$, with the subscript I indicating that the parameters refer to the model fitted using the *true* IV_t . In addition, we assume $\gamma_I > 0$ and $\beta_I \geq 0$, that is consistent with recurrent empirical evidence on the dynamics of time series of realized variances.

The integrated variance is a latent variable and, in real data application, it can be approximated by the realized variance. Letting ε_t be a series of iid measurement errors with finite variance σ_ε^2 , we can write

$$\widetilde{RV}_t = \widetilde{IV}_t + \varepsilon_t,$$

where $\widetilde{RV}_t = \log(RV_t)$. It can be shown, by standard arguments, that equation (13) implies an ARMA(1,1) model for \widetilde{RV}_t (see Bollerslev et al. (2016))

$$\widetilde{RV}_t = \mu_I + \pi_I \widetilde{RV}_{t-1} + \varepsilon_t - \pi_I \varepsilon_{t-1} + u_{t,I}. \quad (14)$$

Assume now that a misspecified AR(1) model is fitted to \widetilde{RV}_t

$$\widetilde{RV}_t = \omega_R + \pi_R \widetilde{RV}_{t-1} + u_{t,R},$$

where $u_{t,R}$ is an iid sequence of zero mean errors with variance $\sigma_{u,R}^2$. Letting $\gamma_R(k) = \text{cov}(\widetilde{RV}_t, \widetilde{RV}_{t-k})$ and $\gamma_I(k) = \text{cov}(\widetilde{IV}_t, \widetilde{IV}_{t-k})$, for $k > 0$, by the assumptions made on ε_t , $u_{t,I}$ and $u_{t,R}$

$$\gamma_R(1) = \gamma_I(1) = \pi_I \gamma_I(0) \quad (15)$$

and

$$\gamma_R(0) = \gamma_I(0) + \sigma_\varepsilon^2.$$

It then easily follows that

$$\pi_R = \frac{\pi_I \gamma_I(0)}{\gamma_I(0) + \sigma_\varepsilon^2} = \pi_I \left(1 + \frac{\sigma_\varepsilon^2}{\gamma_I(0)} \right)^{-1}, \quad (16)$$

leading to the conclusion, in line with the findings of Bollerslev et al. (2016), that modeling the noisy RV_t , instead of the latent IV_t , implies an autoregressive coefficient π_R lower than that characterizing the dynamics of the latent IV_t . Equation (16) clearly shows that the impact of this *attenuation bias* directly depends on the noise variance ratio $\frac{\sigma_\varepsilon^2}{\text{var}(IV_t)}$: higher ratios correspond to more substantial reductions in volatility persistence.

Since the empirical properties of the observed time series of financial returns usually require working with models of order (1,1), it is of interest to extend our

investigation to consider the impact of attenuation bias in this setting. Assuming a RGARCH(1,1) for IV_t implies that IV_t follows the ARMA(1,1) model

$$\widetilde{IV}_t = \mu_I + \pi_I \widetilde{IV}_{t-1} - \beta_I u_{t-1,I} + u_{t,I}, \quad (17)$$

where the autoregressive coefficient is now given by $\pi_I = \beta_I + \varphi_I \gamma_I$, with $\beta_I > 0$. By standard theory, the following recursion holds

$$\rho_I(k) = \pi_I \rho_I(k-1), \quad \forall k > 1, \quad (18)$$

where $\rho_I(k) = \gamma_I(k)/\gamma_I(0)$ is the lag- k autocorrelation function of \widetilde{IV}_t . This implies that

$$\pi_I = \frac{\rho_I(k)}{\rho_I(k-1)}.$$

Also, it can be shown (see [Bollerslev, 1988](#)), among others) that

$$\rho_I(1) = \frac{(1 - \pi_I \beta_I)(\pi_I - \beta_I)}{1 + \beta_I^2 - 2\pi_I \beta_I}. \quad (19)$$

The value of β_I can be then obtained as the solution to the following quadratic equation (see [Kristensen and Linton \(2006\)](#))

$$\beta_I^2 + b_I \beta_I + 1 = 0, \quad (20)$$

where

$$b_I = -\frac{\pi_I^2 + 1 - 2\pi_I \rho_I(1)}{\pi_I - \rho_I(1)}.$$

For $b_I < -2$, a well defined solution for β_I in (20) is given by

$$\beta_I = \frac{-b_I - \sqrt{b_I^2 - 4}}{2}.$$

The other available solution is not admissible since it is the reciprocal of the previous one and leads to values $\beta_I > 1$, in contradiction with the stationarity assumption. Taking the same approach as for the (1,0) case, let us now assume that a misspecified ARMA(1,1) model is identified for RV_t

$$\widetilde{RV}_t = \mu_R + \pi_R \widetilde{RV}_{t-1} - \beta_R u_{t-1,R} + u_{t,R}. \quad (21)$$

By (15) and (18), it then follows that

$$\pi_R = \frac{\rho_R(k)}{\rho_R(k-1)} = \frac{\rho_I(k)}{\rho_I(k-1)} = \pi_I,$$

so that the two models for IV_t and RV_t will be characterized by the same AR coefficient. Regarding β_R , as previously shown for the IV model, the value of β_R can be obtained as

$$\beta_R = \frac{-b_R - \sqrt{b_R^2 - 4}}{2},$$

where

$$b_R = -\frac{\pi_I^2 + 1 - 2\pi_I \rho_R(1)}{\pi_I - \rho_R(1)}.$$

In order to better illustrate and interpret the relationship between the parameters of RGARCH models of order (1,1) and the measurement error variance, we have performed a Monte Carlo simulation study. The structure of the simulation process can be summarized as follows

1. Generate $z_t \stackrel{iid}{\sim} (0, 1)$ and $u_{t,I} \stackrel{iid}{\sim} N(0, \sigma_{u,I}^2)$, for $t = 1, \dots, T$.
2. Generate an artificial $\log(IV_t)$ series from the ARMA(1,1) model

$$\widetilde{IV}_t = \mu_I + \pi_I \widetilde{IV}_{t-1} + w_{t,I} - \beta_I w_{t-1,I}, \quad \text{for } t = 1, \dots, T,$$

where $w_{t,I} = \tau_I(z_t) + u_{t,I}$.

3. Generate returns from a RGARCH(1,1) for \widetilde{IV}_t .
4. Contaminate \widetilde{IV}_t by an additive measurement error ($\varepsilon_t \stackrel{iid}{\sim} N(0, \sigma_\varepsilon^2)$), in order to generate an artificial \widetilde{RV}_t series.
5. Using the ML method, fit a RGARCH(1,1) model using \widetilde{RV}_t as a realized measure.
6. Repeat steps 1-5 for n_{sim} times.

The above design is implemented setting $n_{sim} = 1000$ and $T = 2000$, after discarding the first 1000 observations taken as burn-in period. For the distribution of z_t two different settings have been considered: $z_t \stackrel{iid}{\sim} N(0, 1)$ and $z_t \stackrel{iid}{\sim} \sqrt{\frac{\nu-2}{\nu}} t(\nu)$, with $\nu = 5$.

Also, in order to illustrate the impact of the noise variance ratio $(\sigma_\varepsilon / \sigma_{u,I})^2$ on the magnitude of the attenuation bias, keeping fixed to 0.4 the value of $\sigma_{u,I}$, three different values of the measurement error standard deviation σ_ε have been considered: $\sigma_\varepsilon \in (0.2, 0.4, 0.6)$. Finally, regarding the coefficients of the dynamic volatility equation, in order to mimic different empirical settings, three different sets of parameter values have been considered. The parameters of the simulated DGPs have been summarized in Table 1 where the last six columns of the table summarize the simulation results in terms of the simulated mean and standard deviations of the estimated $(\gamma_R, \beta_R, \pi_R)$ coefficients. The simulation results show that, as σ_ε increases, the value of γ_R , in the RGARCH model fitted to the RV series, tends to decrease while the opposite happens for β_R . The gap between the theoretical γ_I and β_I parameters and the estimated γ_R and β_R tends to be more pronounced for higher values of σ_ε . As previously remarked, the value of π_R tends to remain stable.

In conclusion of our discussion, some remarks should be done. In our simulation, we have considered a simplified setting in which the realized measurement error has been assumed to be homoskedastic. However, the theoretical results reviewed in Section 2 suggest that the assumption of homoskedastic measurement errors is an evident oversimplification. In the presence of a time-varying measurement error variance, the size of the attenuation bias, for both γ and β , is expected to be time-varying as a function of the value of this variance. This issue is addressed in the next section that proposes and discusses extensions of the standard RGARCH model that allow to take into account time-varying attenuation bias effects.

Table 1: Simulated DGP settings and coefficients (columns 1-10), average and standard deviation values of the estimated parameters γ_R , β_R and π_R for $n_{sim} = 1000$ simulations from RGARCH(1,1) model (columns 11-16). Key to table: $\bar{\theta}$: average of estimated θ values from the n_{sim} simulated series; σ_{θ} : empirical standard errors of estimated θ values from the n_{sim} simulated series.

z_t	ω_t	γ_t	β_t	ξ_t	φ_t	$\tau_{1,t}$	$\tau_{2,t}$	$\sigma_{u,t}$	σ_{ε}	$\bar{\gamma}_R$	σ_{γ_R}	$\bar{\beta}_R$	σ_{β_R}	$\bar{\pi}_R$	σ_{π_R}
$N(0,1)$	0.005	0.30	0.60	0.00	1.00	-0.05	0.10	0.40	0.20	0.260	0.031	0.637	0.028	0.897	0.016
$N(0,1)$	0.005	0.40	0.50	0.00	1.00	-0.05	0.10	0.40	0.20	0.347	0.032	0.551	0.027	0.898	0.014
$N(0,1)$	0.005	0.60	0.30	0.00	1.00	-0.05	0.10	0.40	0.20	0.515	0.032	0.382	0.026	0.897	0.012
$N(0,1)$	0.005	0.30	0.60	0.00	1.00	-0.05	0.10	0.40	0.40	0.194	0.027	0.703	0.029	0.896	0.019
$N(0,1)$	0.005	0.40	0.50	0.00	1.00	-0.05	0.10	0.40	0.40	0.257	0.028	0.640	0.029	0.897	0.016
$N(0,1)$	0.005	0.60	0.30	0.00	1.00	-0.05	0.10	0.40	0.40	0.387	0.028	0.510	0.027	0.896	0.014
$N(0,1)$	0.005	0.30	0.60	0.00	1.00	-0.05	0.10	0.40	0.60	0.140	0.022	0.756	0.032	0.895	0.023
$N(0,1)$	0.005	0.40	0.50	0.00	1.00	-0.05	0.10	0.40	0.60	0.190	0.023	0.707	0.030	0.896	0.019
$N(0,1)$	0.005	0.60	0.30	0.00	1.00	-0.05	0.10	0.40	0.60	0.289	0.025	0.610	0.028	0.897	0.015
$t(0,1.5)$	0.005	0.30	0.60	0.00	1.00	-0.05	0.10	0.40	0.20	0.267	0.032	0.629	0.027	0.897	0.015
$t(0,1.5)$	0.005	0.40	0.50	0.00	1.00	-0.05	0.10	0.40	0.20	0.359	0.041	0.542	0.026	0.898	0.013
$t(0,1.5)$	0.005	0.60	0.30	0.00	1.00	-0.05	0.10	0.40	0.20	0.534	0.048	0.368	0.027	0.898	0.012
$t(0,1.5)$	0.005	0.30	0.60	0.00	1.00	-0.05	0.10	0.40	0.40	0.203	0.031	0.693	0.030	0.897	0.017
$t(0,1.5)$	0.005	0.40	0.50	0.00	1.00	-0.05	0.10	0.40	0.40	0.275	0.035	0.621	0.030	0.897	0.015
$t(0,1.5)$	0.005	0.60	0.30	0.00	1.00	-0.05	0.10	0.40	0.40	0.409	0.048	0.491	0.033	0.898	0.013
$t(0,1.5)$	0.005	0.30	0.60	0.00	1.00	-0.05	0.10	0.40	0.60	0.154	0.034	0.739	0.063	0.893	0.062
$t(0,1.5)$	0.005	0.40	0.50	0.00	1.00	-0.05	0.10	0.40	0.60	0.207	0.032	0.689	0.032	0.896	0.018
$t(0,1.5)$	0.005	0.60	0.30	0.00	1.00	-0.05	0.10	0.40	0.60	0.313	0.039	0.586	0.035	0.897	0.015

5 Time-Varying Coefficient Realized GARCH models with dynamic attenuation bias

In the previous section, we have provided evidence on the impact that measurement errors, arising in the approximation of IV via the discretely sampled RV , can have on the dynamic properties of the conditional variance in Realized GARCH models. Here, relying on this evidence, we propose a generalization of the basic Realized GARCH specification that accounts for dynamic attenuation bias effects due to the time-varying variability of measurement errors in ex-post volatility estimation. As in [Bollerslev et al. \(2016\)](#), a natural solution to deal with this issue is to consider time-varying parameter models where the response of $\log(h_t)$ to the lagged realized measure indirectly depends on the value of $\sigma_{u_{R,t}}^2$, through the ratio RQ_{t-1}/RV_{t-1}^2 .

Practical implementation of these ideas in the RGARCH framework leads to the *Time-Varying* Realized GARCH (TV-RGARCH) model as defined by the following equations

$$\tilde{h}_t = \omega + \beta_t \tilde{h}_{t-1} + \gamma_t \tilde{RV}_{t-1}, \quad (22)$$

$$\tilde{RV}_t = \xi_R + \varphi_R \tilde{h}_t + \tau_R(z_t) + u_{t,R}, \quad (23)$$

$$\gamma_t = \gamma + \gamma_1 \tilde{Y}_{t-1}, \quad (24)$$

$$\beta_t = \beta + \beta_1 \tilde{Y}_{t-1}, \quad (25)$$

where $\tilde{RQ}_t = \log(\sqrt{RQ}_t)$, $\tilde{Y}_t = \log(Y_t) = \log(\sqrt{RQ}_t/RV_t) = \tilde{RQ}_t - \tilde{RV}_t$. Consistently with the evidence provided in Section 4, the fitted values of the γ_1 and β_1 coefficients are expected to have negative and positive signs, respectively. If this holds, at time $t - 1$,

more accurate log-transformed realized measures will correspond to higher (lower) values of γ_t (β_t). It can be immediately noted that the RGARCH model is nested in the TV-RGARCH specification for $\gamma_1 = \beta_1 = 0$.

By simple algebra, the TV-RGARCH model can be further generalized by replacing the specifications in equations (24)-(25) by the following

$$\gamma_t = \gamma + \gamma_1 \widetilde{RQ}_{t-1} + \gamma_2 \widetilde{RV}_{t-1}, \quad (26)$$

$$\beta_t = \beta + \beta_1 \widetilde{RQ}_{t-1} + \beta_2 \widetilde{RV}_{t-1}. \quad (27)$$

We call the resulting model *Extended* TV-RGARCH (ETV-RGARCH). It can immediately be noted that equations (26) and (27) can be re-parameterized setting

$$\begin{aligned} \gamma_2 &= \gamma_1 + \eta_\gamma, \\ \beta_2 &= \beta_1 + \eta_\beta, \end{aligned}$$

making evident that the ETV-RGARCH nests the TV-RGARCH model for $\eta_\gamma = \eta_\beta = 0$. From a different angle, under the null of a TV-RGARCH model, we have $\gamma_2 = -\gamma_1$ and $\beta_2 = -\beta_1$. So, we expect the estimated γ_2 and β_2 coefficients to be positive and negative, respectively.

In order to make the (E)TV-RGARCH model dynamically complete and allow the generation of multi-step ahead forecasts, we need to augment equations (22)-(25) with a further measurement equation for \widetilde{RQ}_t

$$\widetilde{RQ}_t = \xi_Q + \varphi_Q \widetilde{h}_t + \tau_Q(z_t) + u_{t,Q}. \quad (28)$$

Conditional on \mathcal{F}_{t-1} , we assume that $(u_{t,R}, u_{t,Q})$ and z_t are stochastically independent and

$$\begin{pmatrix} u_{t,R} \\ u_{t,Q} \end{pmatrix} \Big|_{\mathcal{F}_{t-1}} \underset{iid}{\sim} MVN_2(\mathbf{0}, \Sigma_u), \quad \Sigma_u = \begin{pmatrix} \sigma_{u,R}^2 & \rho_{R,Q} \sigma_{u,R} \sigma_{u,Q} \\ \rho_{R,Q} \sigma_{u,R} \sigma_{u,Q} & \sigma_{u,Q}^2 \end{pmatrix},$$

where the notation $MVN_2(\mu, \Sigma)$ indicates a bivariate Normal distribution with expectation μ and variance-covariance matrix Σ .

Remark 1. We model $u_{t,R}$, the error term in the measurement equation for \widetilde{RV}_t , as being conditionally homoskedastic. This assumption is indeed not central to our approach and could be easily relaxed. Under this respect, reminding the discussion in Section 4, it is worth noting that $u_{t,R}$ has a complex nature being given by some function of two different error sources. Of these, the first is given by the random measurement error related to the discrepancy between the log-transformed realized measure and the latent \widetilde{IV}_t , that is ε_t , in the example provided in Section 4. The second source of error is related to the discrepancy between \widetilde{IV}_t and the log-transformed conditional variance \widetilde{h}_t , that is $w_{t,I} = u_{t,I} + \tau_I(z_t)$, adding leverage effects to the example provided in Section 4. While it could be a reasonable simplification to assume that $u_{t,I}$ and z_t are homoskedastic, as reminded in Section 2, the same of course does not hold for the *realized measurement error* ε_t . So, conditional heteroskedasticity of ε_t could potentially provide support for the hypothesis of conditional heteroskedasticity of $u_{t,R}$. However, the size of this effect, and its empirical detectability, will inevitably depend on the relative variabilities of the components of $u_{t,R}$ that is ε_t and $w_{t,I}$. To investigate the presence of conditional heteroskedasticity in the $u_{t,R}$ series, as a robustness check,

we have considered an alternative model specification where the conditional variance of the RV measurement equation noise is time-varying, i.e.

$$(u_{t,R} | \mathcal{F}_{t-1}) \underset{iid}{\sim} (0, \sigma_{u_{R,t}}^2).$$

Since the variance of the *realized measurement error* ε_t is a function of the ratio IQ_t/IV_t^2 , it seems natural to model $\sigma_{u_{R,t}}^2$ as a function of its empirical counterpart RQ_t/RV_t^2 . Namely, motivated by standard results on the asymptotic distribution of \widetilde{RV}_t , in order to model the dynamics of $\sigma_{u_{R,t}}^2$, letting $Y_t = \sqrt{RQ_t}/RV_t$, we have considered the following specification

$$\sigma_{u_{R,t}}^2 = \exp\{\delta_0 + \delta_1 V(Y_{t-1})\}, \quad (29)$$

where the function $V(\cdot)$ has been chosen to be either the log or the identity function; the exponential formulation guarantees the positivity of the estimated variance, thus avoiding to impose any constraints on the parameters δ_0 and δ_1 . For $\delta_1 = 0$ the (E)TV-RGARCH model is obtained as a special case.

Remark 2. As shown by Hansen et al. (2012) for the basic RGARCH model, the TV-RGARCH model can be also represented as a Hidden Markov Model (HMM) driven by the latent chain \widetilde{h}_t . Namely, substituting the measurement equations for \widetilde{RV}_t and \widetilde{RQ}_t in \widetilde{h}_t we obtain the following representation of the conditional variance equation of the ETV-RGARCH model

$$\widetilde{h}_t = \lambda_0 + \lambda_{1,t} \widetilde{h}_{t-1} + \lambda_2 \widetilde{h}_{t-1}^2 + w_{t-1}^*, \quad (30)$$

where, under the stated assumptions, w_t^* is a sequence of iid errors² defined as

$$w_t^* = \kappa_3 w_{R,t} + \gamma_1 \xi_R w_{Q,t} + \gamma_1 w_{R,t} w_{Q,t} + \gamma_2 w_{R,t}^2 \quad (31)$$

and

$$\begin{aligned} \lambda_0 &= \omega + \gamma \xi_R + \gamma_1 \xi_R \xi_Q + \gamma_2 \xi_R^2, \\ \lambda_{1,t} &= \kappa_0 + \kappa_1 w_{R,t-1} + \kappa_2 w_{Q,t-1}, \\ \lambda_2 &= \beta_1 \varphi_Q + \beta_2 \varphi_R + \gamma_1 \varphi_R \varphi_Q + \gamma_2 \varphi_R^2, \\ \kappa_0 &= \beta + \beta_1 \xi_Q + \beta_2 \xi_R + \gamma \varphi_R + \gamma_1 \xi_R \varphi_Q + \gamma_1 \xi_Q \varphi_R + 2\gamma_2 \xi_R \varphi_R, \\ \kappa_1 &= \beta_2 + \gamma_1 \varphi_Q + 2\gamma_2 \varphi_R, \\ \kappa_2 &= \beta_1 + \gamma_1 \varphi_R, \\ \kappa_3 &= \gamma + \gamma_1 \xi_Q + 2\gamma_2 \xi_R. \end{aligned}$$

The equivalent representation for TV-RGARCH models can be easily obtained by substituting $\gamma_2 = -\gamma_1$ and $\beta_2 = -\beta_1$ in the above equations. So, although both (E)TV-RGARCH and RGARCH models can be written as HMM models, the stochastic structure of the (E)TV-RGARCH model is more complex than that of the RGARCH model since the model is now driven by a non-linear latent chain. This feature substantially complicates the derivation of stationarity and ergodicity conditions for the proposed TV-RGARCH models. Investigation of these problems goes beyond the scope of this paper and has been currently left for future research.

²Note that $E(w_t^*) \neq 0$. However, without any loss of generality, equation (30) could be written as

$$\widetilde{h}_t = \bar{\lambda}_0 + \lambda_{1,t} \widetilde{h}_{t-1} + \lambda_2 \widetilde{h}_{t-1}^2 + \bar{w}_{t-1},$$

where $\bar{\lambda}_0 = \lambda_0 + E(w_t^*)$ and $\bar{w}_t = w_t^* - E(w_t^*)$, so that $E(\bar{w}_t) = 0$. The value of $E(w_t^*)$ can be easily derived by simple algebra.

6 Estimation and inference

The estimation of model parameters can be easily done by numerically maximizing the likelihood function implied by appropriate assumptions made on the model's error terms z_t , $u_{t,R}$ and $u_{t,Q}$. In particular, the joint conditional density of $(r_t, \widetilde{R}\widetilde{V}_t, \widetilde{R}\widetilde{Q}_t)$ can be factorized as

$$f_{r,R,Q}(r_t, \widetilde{R}\widetilde{V}_t, \widetilde{R}\widetilde{Q}_t | \mathcal{F}_{t-1}) = f_r(r_t | \mathcal{F}_{t-1}) f_{R,Q}(\widetilde{R}\widetilde{V}_t, \widetilde{R}\widetilde{Q}_t | r_t, \mathcal{F}_{t-1}).$$

It follows that the contribution of the t -th observation to the overall log-likelihood can be decomposed as

$$\begin{aligned} \ell(r_t, \widetilde{R}\widetilde{V}_t, \widetilde{R}\widetilde{Q}_t | \mathcal{F}_{t-1}, \theta) &= \log(f_{r,R,Q}(r_t, \widetilde{R}\widetilde{V}_t, \widetilde{R}\widetilde{Q}_t | \mathcal{F}_{t-1})) = \log(f_r(r_t | \mathcal{F}_{t-1})) \\ &+ \log(f_{R,Q}(\widetilde{R}\widetilde{V}_t, \widetilde{R}\widetilde{Q}_t | r_t, \mathcal{F}_{t-1})). \end{aligned} \quad (32)$$

Due to the normality assumption for \mathbf{u}_t formulated in Section 5, $(\widetilde{R}\widetilde{V}_t, \widetilde{R}\widetilde{Q}_t | r_t, \mathcal{F}_{t-1})$ follows a MVN_2 distribution. Further, we assume $z_t \sim \sqrt{\frac{v-2}{v}} t_v$, where t_v denotes a Student's t distribution with v degrees of freedom. The overall log-likelihood will be then given by

$$\begin{aligned} \mathcal{L}(\mathbf{r}, \widetilde{\mathbf{R}}\widetilde{\mathbf{V}}, \widetilde{\mathbf{R}}\widetilde{\mathbf{Q}} | \theta) &= \sum_{t=1}^T \log(f_r(r_t | \mathcal{F}_{t-1})) + \sum_{t=1}^T \log(f_{R,Q}(\widetilde{R}\widetilde{V}_t, \widetilde{R}\widetilde{Q}_t | r_t, \mathcal{F}_{t-1})) \\ &= \ell_r + \ell_{R,Q}. \end{aligned}$$

We will refer to ℓ_r and $\ell_{R,Q}$ as the *partial* and *measurement* log-likelihoods respectively. Under the stated distributional assumptions, we get

$$\begin{aligned} \ell(r_t, \widetilde{R}\widetilde{V}_t, \widetilde{R}\widetilde{Q}_t | \mathcal{F}_{t-1}, \theta) &= \widetilde{K}(\mathbf{v}) - \frac{1}{2} \widetilde{h}_t - \frac{v+1}{2} \log \left[1 + \frac{r_t^2}{h_t(v-2)} \right] \\ &- \frac{1}{2} \log(|\Sigma_{\mathbf{u}}|) - \frac{1}{2} \mathbf{u}_t' \Sigma_{\mathbf{u}}^{-1} \mathbf{u}_t, \end{aligned} \quad (33)$$

for $t = 1, \dots, T$, where θ is the vector of unknown model parameters, $\mathbf{u}_t = (u_{t,R}, u_{t,Q})'$ and $\widetilde{K}(\mathbf{v}) = \log(K(\mathbf{v}))$, with

$$K(\mathbf{v}) = \frac{\Gamma(\frac{v+1}{2})}{\sqrt{\pi(v-2)} \Gamma(\frac{v}{2})}.$$

The MLE of θ can be obtained by numerically maximizing the aggregated log-likelihood

$$\hat{\theta}_T = \arg \max_{\theta} \sum_{t=1}^T \mathcal{L}(\mathbf{r}, \widetilde{\mathbf{R}}\widetilde{\mathbf{V}}, \widetilde{\mathbf{R}}\widetilde{\mathbf{Q}} | \theta).$$

Under the usual regularity conditions, standard errors for the elements of $\hat{\theta}_T$ can be easily obtained from the numerically approximated observed Fisher information matrix and inference can be performed relying on the asymptotic normality of $\hat{\theta}_T$. In order to double check the validity of the standard asymptotic results on the distribution of $\hat{\theta}_T$, as in [Borup and Jakobsen \(2019\)](#), we have implemented a parametric Bootstrap resampling algorithm along the lines described in [Paparoditis and Politis \(2009\)](#). The

main steps of the Bootstrap resampling procedure are summarized below. Throughout the presentation, the following notational conventions will be adopted: the notation $\hat{\psi}$ denotes the estimate of coefficient ψ based on in-sample data and $X^{(B)}$ denotes the Bootstrap replicate of X .

1. Save the residual vector from in-sample estimation

$$\mathbf{e}_t = (\hat{z}_t, \hat{u}_{t,R}, \hat{u}_{t,Q})'$$

and standardize it using the estimated variance and covariance matrix of \mathbf{e}_t

$$\mathbf{a}_t = \hat{\Sigma}_{\mathbf{e}}^{-1/2} \mathbf{e}_t, \quad t = 1, \dots, T,$$

where

$$\hat{\Sigma}_{\mathbf{e}} = \begin{pmatrix} 1 & \mathbf{0}_{1,2} \\ \mathbf{0}_{2,1} & \hat{\Sigma}_{\mathbf{u}} \end{pmatrix}$$

with $A^{-1/2}$ denoting the Cholesky decomposition of the matrix A and $\mathbf{0}_{r,s}$ being a $(r \times s)$ matrix of zeros.

2. Resample with replacement the time series of \mathbf{a}_t to generate the time series of Bootstrap residuals $\mathbf{e}_t^{(B)} = \hat{\Sigma}_{\mathbf{e}}^{1/2} \mathbf{a}_t^{(B)} = (\hat{z}_t^{(B)}, \hat{u}_{t,R}^{(B)}, \hat{u}_{t,Q}^{(B)})'$.
3. Using the $\mathbf{e}_t^{(B)}$, recursively generate a Bootstrap replicate of $(r_t, RV_t, RQ_t)'$ for $t = 1, \dots, T$. The set of recursions needed to generate $(r_t^{(B)}, RV_t^{(B)}, RQ_t^{(B)})'$ is given by

$$\begin{aligned} \hat{\beta}_t^{(B)} &= \hat{\beta} + \hat{\beta}_1 \log \left(\sqrt{RQ_{t-1}^{(B)}} / RV_{t-1}^{(B)} \right) = \hat{\beta} + \hat{\beta}_1 \tilde{Y}_{t-1}^{(B)}, \\ \hat{\gamma}_t^{(B)} &= \hat{\gamma} + \hat{\gamma}_1 \log \left(\sqrt{RQ_{t-1}^{(B)}} / RV_{t-1}^{(B)} \right) = \hat{\gamma} + \hat{\gamma}_1 \tilde{Y}_{t-1}^{(B)}, \\ \tilde{h}_t^{(B)} &= \hat{\omega} + \hat{\gamma}_t^{(B)} \tilde{RV}_{t-1}^{(B)} + \hat{\beta}_t \tilde{h}_{t-1}^{(B)}, \\ r_t^{(B)} &= \sqrt{h_t^{(B)}} z_t^{(B)}, \\ \mathbf{q}_t^{(B)} &= \hat{\xi} + \hat{\phi} \tilde{h}_t^{(B)} + \hat{M}_\tau \zeta_t^{(B)} + \mathbf{u}_t^{(B)}, \end{aligned}$$

for $t = 1 \dots, T$, where $\hat{\xi} = (\hat{\xi}_R, \hat{\xi}_Q)'$, $\hat{\phi} = (\hat{\phi}_R, \hat{\phi}_Q)'$, $\mathbf{q}_t^{(B)} = (\tilde{RQ}_t^{(B)}, \tilde{RV}_t^{(B)})'$,

$\mathbf{u}_t^{(B)} = (u_{t,R}^{(B)}, u_{t,Q}^{(B)})'$, $\zeta_t^{(B)} = (z_t^{(B)}, (z_t^{(B)})^2 - 1)'$ and

$$\hat{M}_\tau = \begin{pmatrix} \hat{\tau}_{1,R} & \hat{\tau}_{2,R} \\ \hat{\tau}_{1,Q} & \hat{\tau}_{2,Q} \end{pmatrix}.$$

4. Fit the model to the Bootstrapped data $(r_t^{(B)}, \tilde{RV}_t^{(B)}, \tilde{RQ}_t^{(B)})'$ and save the estimated parameter vector $\hat{\theta}^{(B)}$.
5. Repeat steps 2-4 for $B = 999$ times.

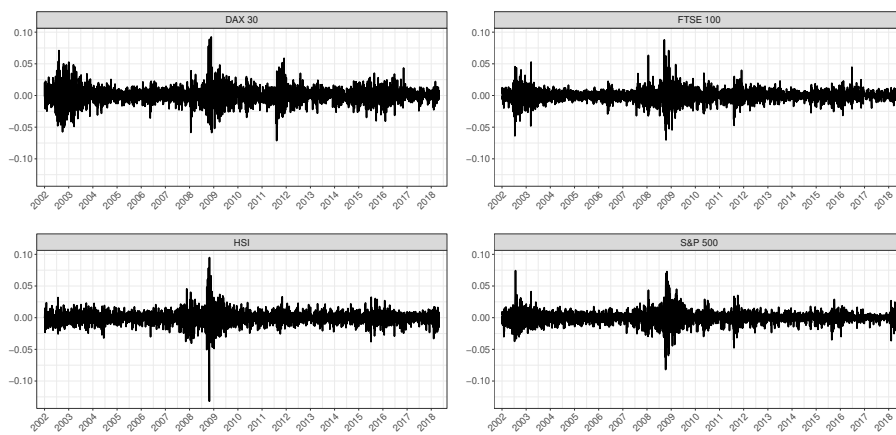
7 Empirical application

7.1 Data

In order to assess the merits of the proposed approach for risk management, we present the results of an empirical application to four major stock market indices: DAX 30 (Germany), FTSE 100 (UK), Hang Seng (Hong Kong) and S&P 500 (US). For each of these markets, 5-minute time series of the index value were downloaded from Thomson Reuters Tick History considering the period from January 2002 to April 2018. Daily open-to-close returns and realized measures were then computed limiting the attention to the official trading hours of each index. Furthermore, the data were cleaned removing the last day of each year, some extreme outliers and the last 5-minute observation of each trading day, as usual. Due to the cleaning procedure, different trading days and holiday variations, the sample period consists of 4096 daily observations for DAX 30, 4063 for FTSE 100, 3951 for Hang Seng (HSI) and 4014 for S&P 500.

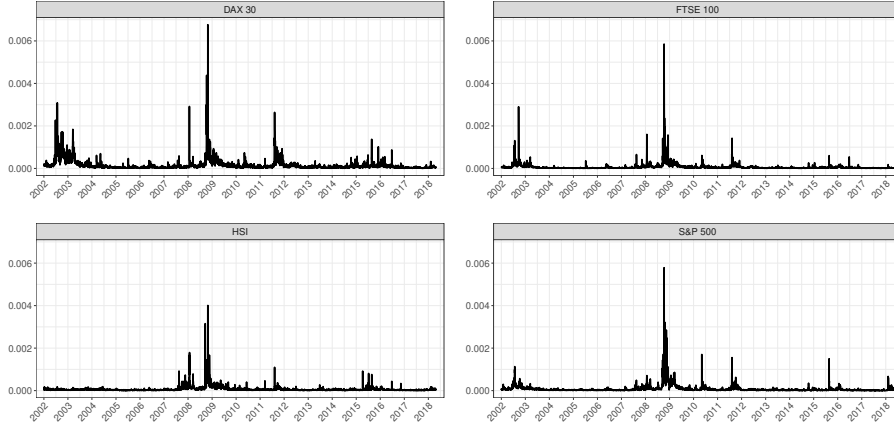
Looking at the time plots of the daily open-to-close log-returns (Figure 1) and 5-minute RVs (Figure 2), four important events can be detected. First, the effects of the 2008-2009 financial crisis are clearly visible in all the series while the effects of the 2011-2012 sovereign debt crisis are more easily detectable in the US and European series, being particularly evident for the DAX series. Similarly, at the beginning of the sample period, a high volatility period, mainly related to the explosion of the dot-com bubble and the introduction of Euro, is mostly visible for the DAX and FTSE indices, less clearly evident in the S&P 500 and not detectable in the HSI index. Last, a high volatility period affects with different intensities, all the markets across 2015 and 2016. Different events can be identified as potential determinants of this phenomenon including the Chinese stock market turbulence, the Greek debt default in 2015, the end of quantitative easing in the United States at the end of 2014 and the Brexit referendum in 2016. The main descriptive statistics of returns are reported in Table 15 in the Empirical Appendix.

Figure 1: Time series of daily open-to-close log-returns



Daily log-returns for the stock market indices DAX 30 (top-left), FTSE 100 (top-right), Hang Seng (bottom-left) and S&P500 (bottom-right) for the full sample period 2002/01/01 – 2018/04/30.

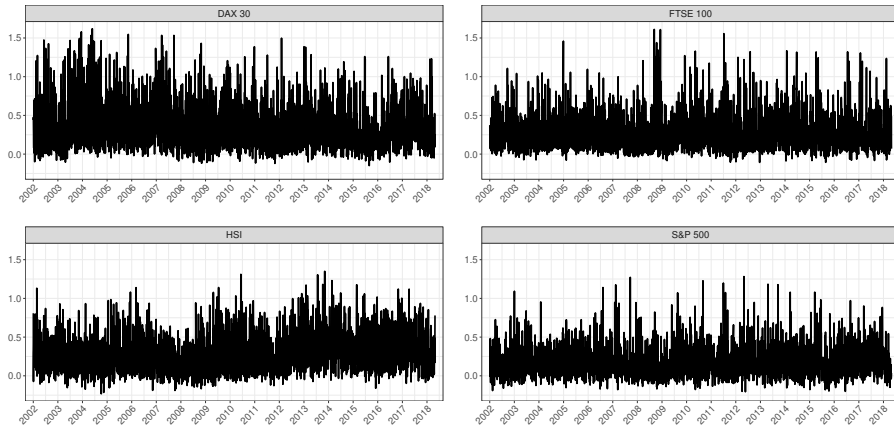
Figure 2: Time series of 5-min Realized Volatility



Daily 5-minute Realized Volatility for the stock market indices DAX 30 (top-left), FTSE 100 (top-right), Hang Seng (bottom-left) and S&P500 (bottom-right) for the full sample period 2002/01/01 – 2018/04/30.

In line with asymptotic theory, a point measure of the accuracy of the log-transformed realized variance is obtained by computing the ratio Y_t . The time series plots in Figure 3 reveal that, for all markets considered, the log-ratio \tilde{Y}_t is characterized by remarkable short term fluctuations thus supporting the intuition that accounting for a time-varying attenuation bias effect could be beneficial for volatility and risk forecasting.

Figure 3: Time series of $\log\left(\frac{\sqrt{RQ_t}}{RV_t}\right)$



Daily log-ratio $\log\left(\frac{\sqrt{RQ_t}}{RV_t}\right)$ for the stock market indices DAX 30 (top-left), FTSE 100 (top-right), Hang Seng (bottom-left) and S&P500 (bottom-right) for the full sample period 2002/01/01 – 2018/04/30.

Table 2: Sample correlations between γ_t and β_t fitted by TV-RGARCH and ETV-RGARCH models.

	DAX 30	FTSE 100	HSI	S&P 500
ρ_γ	0.640	0.722	0.811	0.952
ρ_β	0.720	0.799	0.892	1.000

7.2 In-sample analysis

Referring to the four stock market indices considered, this section assesses the in-sample performance of the proposed models, taking the standard RGARCH model as a benchmark and considering the full sample period from 2002/01/01 to 2018/04/30. Model parameters have been estimated by maximum likelihood as described in Section 6. Table 3 reports the estimated coefficients and standard errors, based on the observed information matrix. Overall, the fitted coefficients are in most cases significantly different from 0 at the usual 5% level. The only exceptions are the intercepts of the volatility, ω , and measurement equations, ξ_R and ξ_Q , that, in some cases, result to be not significantly different from 0, and, for DAX 30 and FTSE 100, the β coefficient. Similarly, the $\tau_{1,R}$ and $\tau_{1,Q}$ coefficients are never significant for the HSI index. The ξ_R and φ_R coefficients are, overall, very close to 0 and 1, respectively, suggesting that the log-transformed RV is an approximately unbiased proxy of the latent $\log(h_t)$.

Focusing on the TV-RGARCH models, it is interesting to see that the estimated γ_t and β_t coefficients are significantly different from 0 at the usual 5% level providing evidence in favor of the presence of time-varying attenuation bias effects. Also, as expected, γ_t and β_t have negative and positive signs, respectively, confirming the intuition that, when $\log(RV_{t-1})$ provides a more (less) accurate estimate of the latent signal $\log(IV_t)$, the following hold: i) the impact of \widetilde{RV}_{t-1} on \widetilde{h}_t , as measured by γ_t , is higher (lower) ii) the contribution of the inertial component $\log(h_{t-1})$ to the value of $\log(h_t)$, as measured by β_t , is lower (higher). This regularity is clearly evident from Figure 4 that represents the time series of the fitted γ_t and β_t coefficients for the TV-RGARCH model. Furthermore, the plots reveal another interesting feature: the average of the fitted γ_t (dashed line in the plot) is substantially higher than the fitted time-invariant γ coefficient of the standard RGARCH model (solid line in the plot). A similar argument holds, reversed, for β_t . This implies that the volatility and tail risk estimates generated by the fitted RGARCH and TV-RGARCH models will differ due to the action of two different factors. The first is a level effect related to the discrepancy between $E(\gamma_t)$ and $E(\beta_t)$, on one side, and the RGARCH parameters γ and β , on the other. Differently, the second factor depends on short term fluctuations of the ratio Y_t around its mean level.

The same general picture applies to the ETV-RGARCH model, with the estimated γ_t and β_t being negative and positive, respectively, as for the TV-RGARCH model. On the other hand, as expected, γ_2 and β_2 take opposite signs. The dynamic profiles of the time-varying coefficients γ_t and β_t (Figure 5) are qualitatively not different from what observed for the TV-RGARCH model. This is confirmed by the sample correlation coefficients between γ_t and β_t fitted by TV-RGARCH and ETV-RGARCH, respectively (Table 2).

In Table 4 we report the results of three sets of likelihood ratio tests. First, we separately test the validity of the restrictions implied by the standard RGARCH models against the alternative TV-RGARCH and ETV-RGARCH models. Second, we test

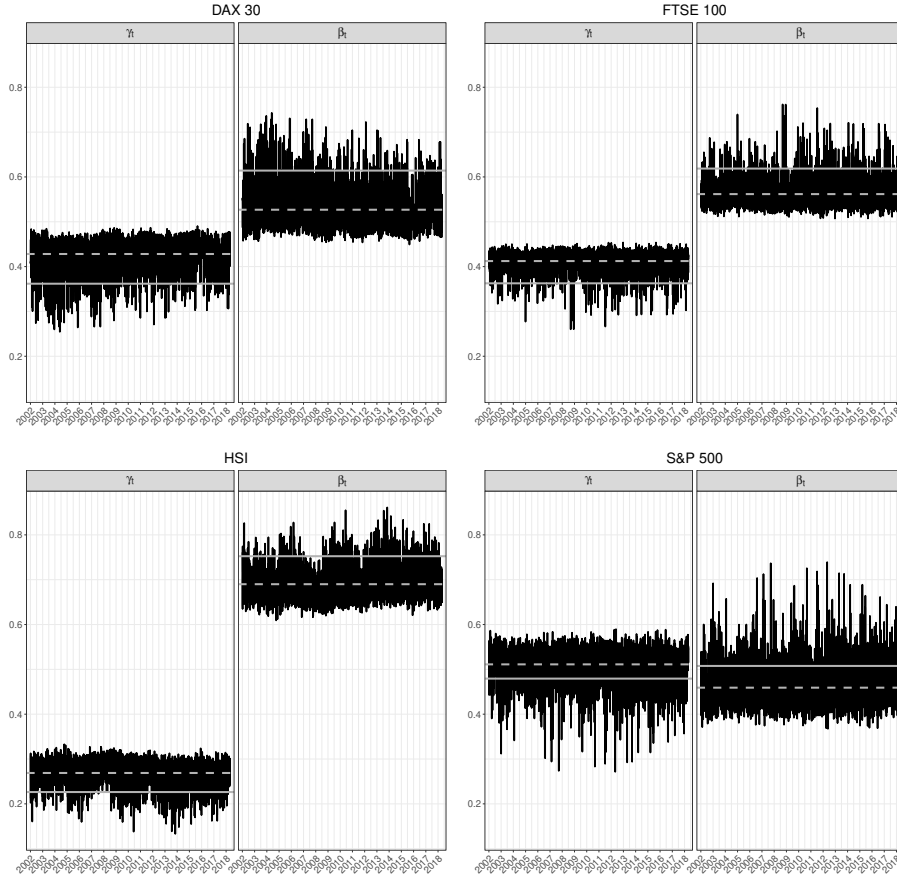
the TV-RGARCH hypothesis against the alternative of a more general ETV-RGARCH model. In the first case, the reference asymptotic distribution of the test statistic under the null is given by a χ_2^2 , for the TV-RGARCH model, and by a χ_4^2 , if the alternative corresponds to an ETV-RGARCH model. In the second set, the reference distribution for testing the TV-RGARCH model against a more general ETV-RGARCH is given by a χ_2^2 distribution. In both cases, since the full-likelihoods of RGARCH and (E)TV-RGARCH are based on different information sets, testing is based on the partial log-likelihood component ℓ_r . For all the markets considered, the benchmark RGARCH model is always rejected at the usual 5% significance level against both alternatives: TV-RGARCH and ETV-RGARCH. When testing the TV-RGARCH against the more general ETV-RGARCH, the data provide mixed evidence, since we find that only in two cases out of four, DAX 30 and HSI, the null is rejected. The last set of likelihood ratio tests, in the bottom panel of Table 4, again compares the TV-RGARCH model, under the null, against the alternative hypothesis of an ETV-RGARCH but using the full likelihood $\mathcal{L}(\theta)$. The results show that, when considering the full likelihood, the TV-RGARCH model is always rejected against the more flexible ETV-RGARCH model.

As a robustness check, we also consider the estimation of heteroskedastic variants of the TV-RGARCH and ETV-RGARCH, as described in *Remark 1* at the end of Section 5. Our data, however, do not provide strong evidence in favor of the presence of heteroskedasticity, for both the conditional variance specifications considered. Namely, the estimation results for heteroskedastic models, reported in Table 18 in the Empirical Appendix, suggest that the homoskedasticity assumption (corresponding to $\delta_1 = 0$) cannot be rejected in the majority of cases. Also, the introduction of the heteroskedastic component does not seem to have a remarkable impact on the estimates of the other model parameters. Accordingly, a simple likelihood ratio test, comparing heteroskedastic vs homoskedastic models, would reveal that the introduction of the heteroskedastic component, in the vast majority of cases, does not bring to any significant improvement in the overall likelihood \mathcal{L} . Finally, we focused our attention on the partial likelihood ℓ_r which measures the ability of the fitted model to reproduce the conditional distribution of returns, hence being a the critical entity for risk management applications. Our findings indeed show that increments in ℓ_r , when present, are always negligible. So, the introduction of the heteroskedastic component is not expected to bring any noticeable gains for tail risk forecasting. It is worth noting that, under this respect, our findings are in line with those of and Hansen et al. (2012) and Hansen and Huang (2016).

The above results are based on standard maximum likelihood theory. In order to double check the validity of the implied asymptotic approximation, we have implemented the Bootstrap resampling procedure described in Section 6 for all the model specifications considered. However, in order to save space, in this section we only report results for the ETV-RGARCH model. The results obtained for the RGARCH and TV-RGARCH models, qualitatively similar to those reported for the ETV-RGARCH, have been reported in the Empirical Appendix.

Figure 6 reports the histograms of the standardized Bootstrap estimates for the ETV-RGARCH model's parameters. In general, the plots suggest that the empirical distributions of the estimates are consistent with the asymptotic normality assumption. Mild positive skewness is detected only for the estimated degrees of freedom parameter ν . Furthermore, Table 5 shows that the Bootstrap means and standard errors are in general very close to the ML estimated coefficients and associated asymptotic standard errors. In addition, the table also reports the 95% Bootstrap percentile confidence

Figure 4: Time series of estimated γ_t and β_t for TV-RGARCH



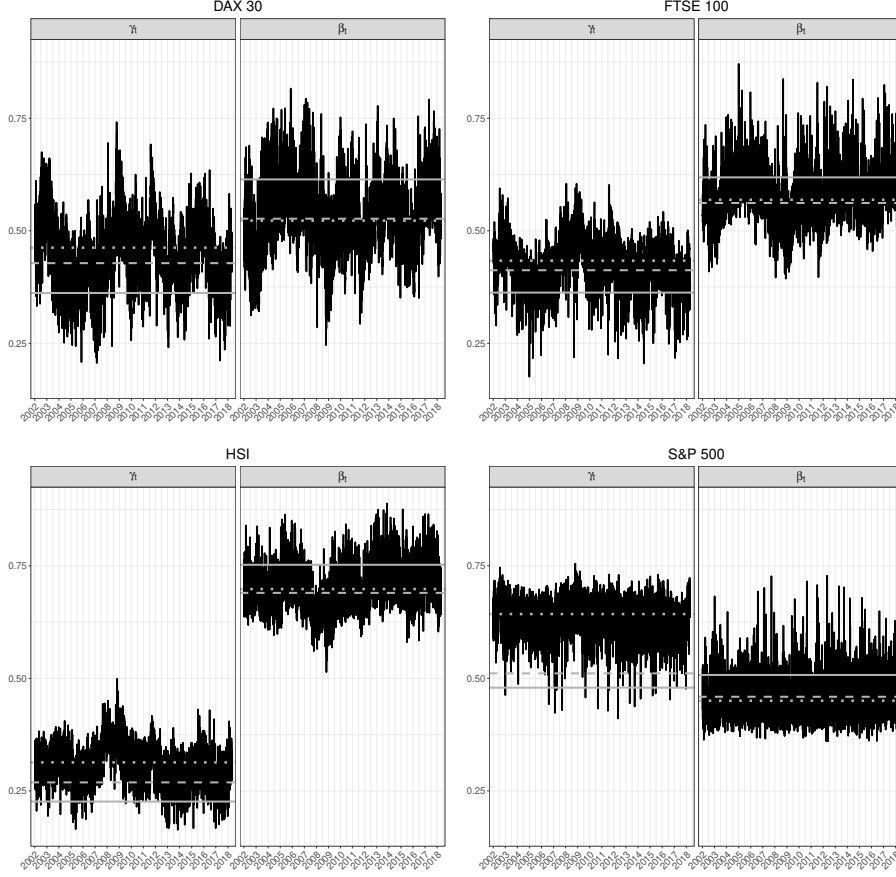
Time-varying γ_t and β_t of TV-RGARCH model for the stock market indices DAX 30 (top-left), FTSE 100 (top-right), Hang Seng (bottom-left) and S&P500 (bottom-right) for the full sample period 2002/01/01 – 2018/04/30. Gray solid-line: RGARCH coefficient. Gray dashed-line: average of TV-RGARCH time-varying coefficient.

intervals for each of the estimated coefficients. Looking at the estimated intervals it can be immediately noted how the assessment of the significance of estimated coefficients based on asymptotic theory is in close agreement with the findings deriving from the analysis of the Bootstrap intervals.

7.3 Out-of-sample analysis

In this section the proposed model specifications are used to generate out-of-sample one-step-ahead forecasts of volatility, VaR and ES. Our forecasting design is based on a rolling window scheme with daily re-estimation. For all markets, the initial in-sample period covers the time interval from 2002/01/01 to 2008/05/31, resulting in different time series lengths for the different indices considered: 1604 for the DAX 30, 1590 for the FTSE 100, 1555 for the HSI and 1558 for the S&P 500. For each index, subsequent re-estimations are then based over moving windows of the same length.

Figure 5: Time series of estimated γ_t and β_t for ETV-RGARCH



Time-varying γ_t and β_t of ETV-RGARCH model for the stock market indices DAX 30 (top-left), FTSE 100 (top-right), Hang Seng (bottom-left) and S&P500 (bottom-right) for the full sample period 2002/01/01 – 2018/04/30. Gray solid-line: RGARCH coefficient. Gray dashed-line: average of TV-RGARCH time-varying coefficient. Gray dotted-line: average of ETV-RGARCH time-varying coefficient.

The performances of the proposed models are compared with those of the standard RGARCH, taken as a benchmark. Also, as a further robustness check, we consider a set of alternative specifications of TV-RGARCH models characterized by different specifications of the time-varying coefficients β_t and γ_t . These have been summarized in Table 6. The aim is here to double check the appropriateness of the specifications of γ_t and β_t discussed in Section 5 and the sensitivity of our empirical results to the model assumed for γ_t and β_t .

Next, we assess the out-of-sample forecasting ability of the model considering different loss functions. First, the ability to accurately forecast the distribution of future returns, for each model, is assessed by computing, as in Hansen et al. (2012), the out-of-sample partial predictive log-likelihood

$$\hat{\ell}_r(\hat{\theta})_{t+1} = \widehat{K}(\hat{\nu}) - \frac{1}{2} \log(\hat{h}_{t+1}) - \frac{\hat{\nu} + 1}{2} \log \left[1 + \frac{r_{t+1}^2}{\hat{h}_{t+1}(\hat{\nu} - 2)} \right], \quad (34)$$

for $t = T, \dots, T + H - 1$, with H being the length of the out-of-sample forecasting period.

The accuracy in forecasting future volatility is then evaluated by means of the QLIKE loss function. This choice is motivated by two considerations. First, the QLIKE is robust to noisy volatility proxies (Patton, 2011). Second, compared to other robust alternatives, this loss function has been found to be more powerful in rejecting poorly performing predictors (Liu et al., 2015). The QLIKE loss has been computed according to the formula

$$QLIKE = \frac{1}{H} \sum_{j=1}^H \left(\log(\hat{h}_{T+j}) + \frac{RV_{T+j}}{\hat{h}_{T+j}} \right), \quad (35)$$

where \hat{h}_{T+j} is the 1-step-ahead conditional variance forecast at time $T + j$. It is trivial to show that models providing better forecasts will be characterized by lower values of QLIKE. Furthermore, the quality of individual VaR forecasts is assessed using the Conditional Coverage test of Christoffersen (1998) and the Dynamic Quantile test of Engle and Manganelli (2004). The usual *Quantile Loss* (Koenker, 2005) is then used to rank models according to their ability to accurately forecast VaR. Namely, letting $VaR_t(\alpha)$ be the α -level one-step-ahead VaR forecast at time t , the Quantile Loss at level α (QL_α) is given by

$$QL_\alpha = \sum_{j=1}^H (\alpha - L_{T+j})(r_{T+j} - VaR_{T+j}(\alpha)), \quad (0 < \alpha < 1), \quad (36)$$

where $L_t = I(r_t < VaR_t(\alpha))$.

Finally, to assess the ability of the proposed models to jointly forecast VaR and ES, we rely on the results of Fissler and Ziegel (2016) on the joint elicibility of the couple (VaR, ES). In particular, they show that (VaR, ES) is jointly elicitable with respect to the following class of strictly consistent loss functions

$$\begin{aligned} FZ_t(r_t, v_t, e_t | \alpha, G_1, G_2) &= (L_t - \alpha) \left(G_1(v_t) - G_1(r_t) + \frac{1}{\alpha} G_2(e_t) v_t \right) \\ &- G_2(e_t) \left(\frac{1}{\alpha} L_t r_t - e_t \right) - \mathcal{G}_2(e_t), \end{aligned} \quad (37)$$

where G_1 is weakly increasing, G_2 is strictly increasing and strictly positive, and $\mathcal{G}_2^1 = G_2$. It can be shown that the expected value of the loss in (37) is uniquely minimized by setting v_t and e_t equal to the level- α VaR and ES series, respectively. Following Patton et al. (2019), we assume VaR and ES to be strictly negative and $ES_t(\alpha) \leq VaR_t(\alpha) < 0$, with $G_1(x) = 0$ and $G_2(x) = -1/x$, resulting in the following loss function

$$FZ_t^{(0)} = \frac{1}{\alpha ES_t(\alpha)} L_t (r_t - VaR_t(\alpha)) + \frac{VaR_t(\alpha)}{ES_t(\alpha)} + \log(-ES_t(\alpha)) - 1, \quad (38)$$

where $ES_t(\alpha)$ is the α -level one-step-ahead ES at time t . As for the other loss functions, models that, over the chosen forecasting period, show lower average values of $FZ_t^{(0)}$ are preferred.

The significance of performance gaps across different models is assessed by means of the Model Confidence Set (MCS) (Hansen et al., 2011).

For the partial predictive log-likelihood, the results reported in Table 7 show that the ETV-RGARCH is always returning the minimum value of the (negative) partial

predictive log-likelihood and both the TV-RGARCH and ETV-RGARCH are always included in the 75% MCS for both the Range (R) and Semi-Quadratic (SQ) statistics. The standard RGARCH model is always excluded from the MCS at both levels considered for DAX 30, FTSE 100 and HSI and enters the 90% MCS only for S&P 500.

Moving to consider the QLIKE loss (Table 8), the ETV-RGARCH is returning the minimum value of the loss function in three cases out of four and is the only model always included in the 75% MCS for both the R and SQ statistics. For HSI, no other model is included in the MCS at any level while, for the remaining indices and for both R and SQ, the considered variants of the TV-RGARCH enter the MCS at the 90% or 75% level. The RGARCH model is always excluded from the MCS for both confidence levels and test statistics considered.

Next we consider the results of the backtesting VaR for two different risk levels: 0.01 and 0.025. At the 0.01 level (Table 9), models incorporating a correction for dynamic attenuation bias always pass the diagnostic tests at the usual 5% level. The only exceptions are the ETV-RGARCH model, significant only at the 1% level for the S&P 500, and the TV-RGARCH*-S2, for which, in the case of the FTSE 100, the DQ tests returns a p-value slightly below 5%. The RGARCH model, although performing well for the other three indices, does not pass the diagnostic tests for the S&P 500. It should be however noted that, for the S&P 500 dataset, all the models considered have a borderline performance returning p-values very close to the 5% acceptance threshold. Differently, at the 0.025 level (Table 10), the TV-RGARCH type models are always passing the diagnostic tests while, for the DAX 30, the RGARCH model does not pass the DQ test.

When considering the accuracy in predictive VaR, assessed via the Quantile Loss, we find that, at the 0.01 level (Table 11), the TV-RGARCH is the only model always included in the 75% MCS for, both the R and SQ statistics, while the ETV-RGARCH models enters the 75% MCS for all indices except for the S&P 500. The RGARCH is always excluded from the MCS for FTSE 100 and S&P 500 but it enters the 90% MCS for DAX 30 and HSI. For the 0.025 level (Table 12), we find that the TV-RGARCH and ETV-RGARCH are the only models always included in the 75% MCS while, on the other hand, the RGARCH never enters the MCS.

A similar picture is observed when jointly evaluating the quality of VaR and ES forecasts via the $FZ^{(0)}$ loss function (Tables 13 and 14). For both the 0.01 and 0.025 levels the following facts arise: both the TV-RGARCH and ETV-RGARCH models are always entering the 75% MCS, exception made for TV-RGARCH that, for S&P 500 at the 0.025 risk level, only enters the 90% MCS; the RGARCH-model is never included in the 75% MCS and enters the 90% MCS only for the HSI at the 0.01 level; For both risk levels, the ETV-RGARCH model is returning the minimum average $FZ^{(0)}$ value for three out of the four indices considered (excluding FTSE 100, for the 0.01 level, and DAX 30, for the 0.025 risk level).

In conclusion: the results of our out-of-sample forecasting experiment show that i) for both volatility and tail risk forecasting, the proposed time-varying RGARCH models, TV-RGARCH and ETV-RGARCH, always outperform the standard RGARCH model ii) the proposed TV-RGARCH and ETV-RGARCH models are not outperformed by the alternative time-varying specifications considered as robustness checks iii) the results are in general robust to the specification of the functional form of the γ_t and β_t coefficients.

8 Concluding Remarks

We have proposed novel model specifications, that generalize the log-linear RGARCH model proposed by [Hansen et al. \(2012\)](#) to account for time-varying attenuation bias effects. The proposed models appear to be effective in capturing the dependency of volatility dynamics on the variability of the measurement error of the reference log-transformed realized measure. The results of an application to VaR and ES forecasting, for four major stock market indices, support the profitability of the proposed model in risk management applications. Estimation of model parameters can be efficiently done via ML estimation. Furthermore, accurate finite sample inference has been obtained implementing a parametric Bootstrap procedure.

The derivation of the statistical properties of the proposed models is an interesting but challenging issue that has not been investigated in this paper. Although it is easy to show that, as for the standard RGARCH model, the TV-RGARCH model, and its extensions, can be written as Hidden Markov Models, depending on a latent Markov chain, analytical derivation of stationarity and ergodicity conditions is troublesome by the non-linearity of the latent chain. So, investigation of these issues has been currently left for future research.

Table 3: In-sample estimation results

	DAX 30			FTSE 100			HSI			S&P 500		
	RG	TV-RG	ETV-RG	RG	TV-RG	ETV-RG	RG	TV-RG	ETV-RG	RG	TV-RG	ETV-RG
ω	-0.171 (0.082)	-0.352 (0.096)	-0.085 (0.367)	-0.039 (0.089)	-0.090 (0.100)	0.190 (0.108)	-0.096 (0.062)	-0.262 (0.076)	0.260 (0.559)	-0.002 (0.109)	-0.157 (0.111)	1.082 (0.322)
γ	0.362 (0.016)	0.471 (0.022)	1.061 (0.111)	0.363 (0.016)	0.442 (0.022)	0.876 (0.120)	0.226 (0.013)	0.304 (0.018)	0.668 (0.097)	0.479 (0.019)	0.546 (0.021)	0.796 (0.129)
γ_1	-	-0.134 (0.034)	-0.195 (0.037)	-	-0.113 (0.043)	-0.204 (0.050)	-	-0.126 (0.035)	-0.164 (0.036)	-	-0.214 (0.057)	-0.210 (0.059)
γ_2	-	-	0.252 (0.043)	-	-	0.242 (0.056)	-	-	0.194 (0.039)	-	-	0.222 (0.063)
β	0.614 (0.015)	0.474 (0.022)	-0.060 (0.137)	0.619 (0.015)	0.523 (0.021)	0.139 (0.125)	0.752 (0.014)	0.646 (0.019)	0.380 (0.138)	0.508 (0.017)	0.419 (0.020)	0.420 (0.128)
β_1	-	0.166 (0.034)	0.227 (0.036)	-	0.148 (0.044)	0.241 (0.051)	-	0.159 (0.036)	0.197 (0.037)	-	0.250 (0.058)	0.248 (0.060)
β_2	-	-	-0.281 (0.043)	-	-	-0.277 (0.057)	-	-	-0.224 (0.041)	-	-	-0.247 (0.064)
ξ_R	-0.068 (0.213)	0.008 (0.210)	0.037 (0.193)	-0.401 (0.225)	-0.385 (0.221)	-0.282 (0.184)	-0.257 (0.243)	-0.380 (0.251)	-0.373 (0.370)	-0.629 (0.205)	-0.557 (0.188)	-0.628 (0.199)
φ_R	1.008 (0.023)	1.015 (0.023)	1.018 (0.021)	1.000 (0.023)	1.001 (0.022)	1.011 (0.018)	1.023 (0.025)	1.010 (0.026)	1.010 (0.038)	0.963 (0.021)	0.970 (0.019)	0.963 (0.020)
$\tau_{1,R}$	-0.135 (0.008)	-0.133 (0.007)	-0.134 (0.007)	-0.087 (0.007)	-0.089 (0.007)	-0.090 (0.007)	0.002 (0.007)	0.003 (0.007)	0.003 (0.007)	-0.107 (0.008)	-0.107 (0.008)	-0.108 (0.008)
$\tau_{2,R}$	0.107 (0.005)	0.108 (0.005)	0.107 (0.005)	0.100 (0.005)	0.098 (0.005)	0.097 (0.005)	0.141 (0.006)	0.140 (0.006)	0.140 (0.006)	0.099 (0.005)	0.099 (0.005)	0.099 (0.005)
$\sigma_{u,R}^2$	0.219 (0.005)	0.213 (0.005)	0.211 (0.005)	0.181 (0.004)	0.177 (0.004)	0.176 (0.004)	0.212 (0.005)	0.208 (0.005)	0.207 (0.005)	0.234 (0.005)	0.231 (0.005)	0.230 (0.005)
ξ_Q	-	-0.015 (0.208)	0.015 (0.191)	-	-0.289 (0.221)	-0.187 (0.186)	-	-0.817 (0.249)	-0.796 (0.359)	-	-0.767 (0.182)	-0.834 (0.194)
φ_Q	-	0.979 (0.022)	0.981 (0.021)	-	0.984 (0.022)	0.994 (0.019)	-	0.936 (0.026)	0.938 (0.036)	-	0.933 (0.018)	0.926 (0.019)
$\tau_{1,Q}$	-	-0.115 (0.010)	-0.115 (0.010)	-	-0.077 (0.008)	-0.077 (0.008)	-	0.006 (0.009)	0.006 (0.009)	-	-0.080 (0.009)	-0.081 (0.009)
$\tau_{2,Q}$	-	0.137 (0.007)	0.138 (0.007)	-	0.114 (0.006)	0.114 (0.006)	-	0.153 (0.007)	0.153 (0.007)	-	0.110 (0.006)	0.110 (0.006)
$\sigma_{u,Q}^2$	-	0.366 (0.008)	0.363 (0.008)	-	0.273 (0.006)	0.272 (0.006)	-	0.326 (0.007)	0.325 (0.007)	-	0.291 (0.007)	0.290 (0.006)
ρ	-	0.911 (0.003)	0.911 (0.003)	-	0.927 (0.002)	0.927 (0.002)	-	0.932 (0.002)	0.931 (0.002)	-	0.946 (0.002)	0.946 (0.002)
v	8.696 (0.811)	8.947 (0.377)	9.161 (0.215)	11.565 (0.520)	11.882 (0.278)	12.152 (1.862)	7.049 (0.342)	6.998 (0.351)	7.303 (0.675)	8.493 (0.258)	8.819 (0.362)	8.850 (0.364)
ℓ_r	13215.061	13223.392	13227.509	14271.797	14281.768	14284.177	13521.888	13528.673	13532.320	14253.075	14257.277	14258.017
$\mathcal{L}(\theta)$	10510.500	10463.282	10481.143	11980.648	12895.611	12903.836	10982.892	11639.085	11649.732	11469.198	12816.408	12828.051

In-sample parameter estimates for the full sample period 2002/01/01 – 2018/04/30. ℓ_r : partial log-likelihood. $\mathcal{L}(\theta)$: log-likelihood. Standard errors are reported in parenthesis below coefficient estimates. In bold parameter not significant at 5% level.

Table 4: Likelihood ratio statistics for the full sample period 2002/01/01 – 2018/04/30. Top panel: likelihood ratio statistics for the partial log-likelihood ℓ_r . Bottom panel: likelihood ratio statistics for the full log-likelihood $\mathcal{L}(\theta)$. P-values in parentheses.

	DAX 30		FTSE 100		HSI		S&P 500	
	TV-RG	ETV-RG	TV-RG	ETV-RG	TV-RG	ETV-RG	TV-RG	ETV-RG
RG	16.663 (0.0002)	24.896 (0.0000)	19.941 (0.0000)	24.760 (0.0000)	13.570 (0.0011)	20.864 (0.0003)	8.404 (0.0150)	9.890 (0.0423)
TV-RG	–	8.233 (0.0163)	–	4.818 (0.0899)	–	7.295 (0.0261)	–	1.481 (0.4769)
TV-RG	–	35.722 (0.0000)	–	16.450 (0.0003)	–	21.294 (0.0000)	–	23.286 (0.0000)

Figure 6: Histograms and superimposed non-parametric densities of 999 standardized Bootstrap estimates of the parameters of the ETV-RGARCH model

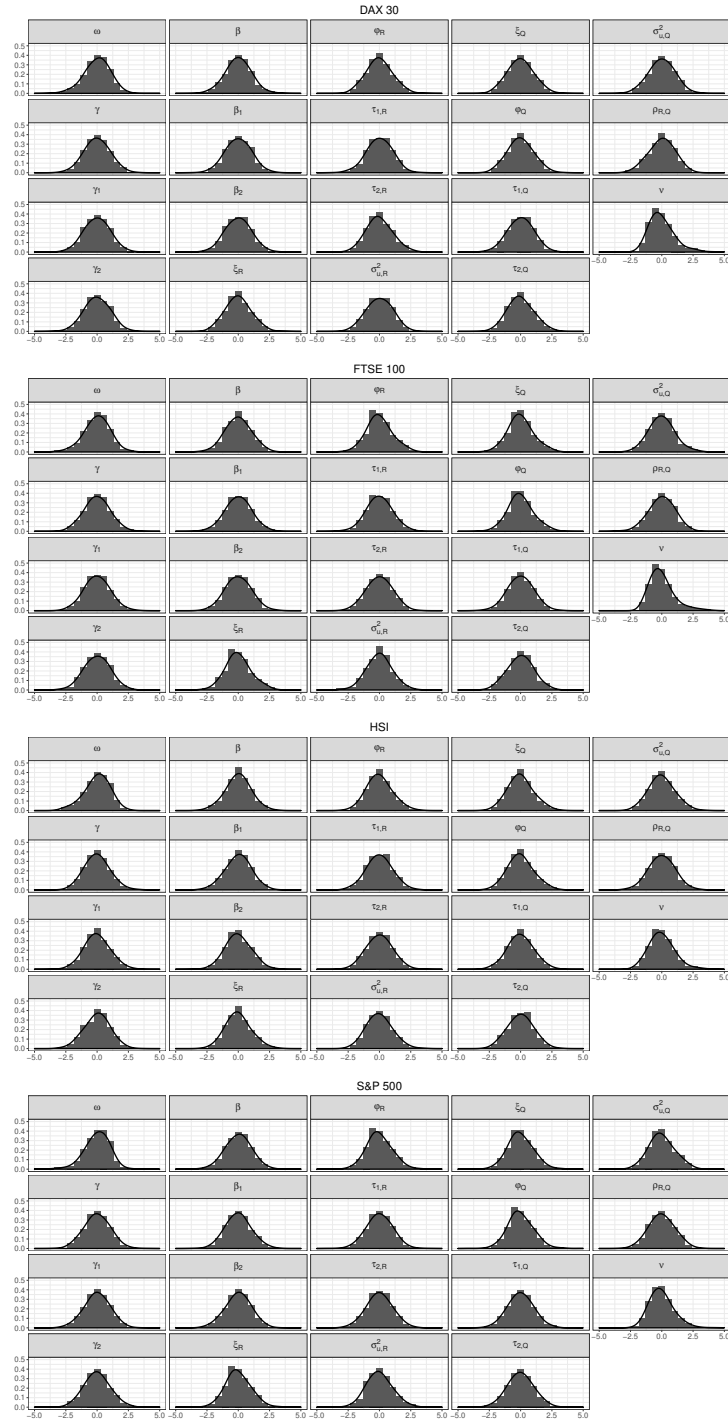


Table 5: Summary of Bootstrap estimates for the ETV-RGARCH model

	DAX 30						FTSE 100						HSI						S&P 500					
	Coef	μ_B	SE	SE.B	$q_{0.025}$	$q_{0.975}$	Coef	μ_B	SE	SE.B	$q_{0.025}$	$q_{0.975}$	Coef	μ_B	SE	SE.B	$q_{0.025}$	$q_{0.975}$	Coef	μ_B	SE	SE.B	$q_{0.025}$	$q_{0.975}$
ω	-0.085	-0.168	0.367	0.402	-1.049	0.551	0.190	0.121	0.108	0.374	-0.682	0.805	0.260	0.175	0.559	0.497	-0.983	1.051	1.082	0.822	0.322	0.340	0.078	1.360
γ	1.061	1.056	0.111	0.104	0.854	1.256	0.876	0.870	0.120	0.121	0.638	1.099	0.668	0.667	0.097	0.106	0.469	0.880	0.796	0.779	0.129	0.125	0.535	1.019
γ_1	-0.195	-0.194	0.037	0.036	-0.267	-0.122	-0.204	-0.203	0.050	0.044	-0.291	-0.113	-0.164	-0.165	0.036	0.038	-0.240	-0.087	-0.210	-0.211	0.059	0.062	-0.341	-0.095
γ_2	0.252	0.251	0.043	0.040	0.172	0.328	0.242	0.241	0.056	0.048	0.151	0.334	0.194	0.197	0.039	0.042	0.114	0.276	0.222	0.224	0.063	0.064	0.098	0.357
β	-0.060	-0.072	0.137	0.111	-0.302	0.153	0.139	0.133	0.125	0.125	-0.106	0.373	0.380	0.365	0.138	0.119	0.120	0.604	0.420	0.387	0.128	0.129	0.129	0.631
β_1	0.227	0.226	0.036	0.036	0.154	0.297	0.241	0.240	0.051	0.045	0.150	0.330	0.197	0.199	0.037	0.040	0.118	0.276	0.248	0.248	0.060	0.062	0.131	0.379
β_2	-0.281	-0.282	0.043	0.040	-0.359	-0.203	-0.277	-0.277	0.057	0.050	-0.372	-0.183	-0.224	-0.227	0.041	0.044	-0.313	-0.139	-0.247	-0.251	0.064	0.065	-0.382	-0.123
ξ_R	0.037	0.054	0.193	0.279	-0.463	0.619	-0.282	-0.264	0.184	0.289	-0.791	0.357	-0.373	-0.350	0.370	0.361	-1.021	0.391	-0.628	-0.615	0.199	0.250	-1.073	-0.116
φ_R	1.018	1.020	0.021	0.030	0.964	1.081	1.011	1.013	0.018	0.029	0.959	1.075	1.010	1.013	0.038	0.037	0.942	1.089	0.963	0.964	0.020	0.025	0.919	1.015
$\tau_{1,R}$	-0.134	-0.133	0.007	0.008	-0.150	-0.119	-0.090	-0.090	0.007	0.007	-0.103	-0.077	0.003	0.002	0.007	0.008	-0.013	0.017	-0.108	-0.108	0.008	0.008	-0.123	-0.094
$\tau_{2,R}$	0.107	0.109	0.005	0.007	0.096	0.124	0.097	0.097	0.005	0.006	0.085	0.108	0.140	0.140	0.006	0.006	0.130	0.151	0.099	0.099	0.005	0.006	0.088	0.111
$\sigma_{\mu,R}^2$	0.211	0.211	0.005	0.005	0.200	0.221	0.176	0.175	0.004	0.005	0.165	0.186	0.207	0.206	0.005	0.007	0.194	0.220	0.230	0.229	0.005	0.006	0.218	0.241
ξ_Q	0.015	0.030	0.191	0.269	-0.474	0.566	-0.187	-0.170	0.186	0.286	-0.701	0.445	-0.796	-0.777	0.359	0.343	-1.412	-0.081	-0.834	-0.824	0.194	0.243	-1.271	-0.337
φ_Q	0.981	0.983	0.021	0.029	0.929	1.040	0.994	0.996	0.019	0.029	0.943	1.058	0.938	0.940	0.036	0.035	0.874	1.012	0.926	0.927	0.019	0.024	0.882	0.976
$\tau_{1,Q}$	-0.115	-0.115	0.010	0.012	-0.138	-0.093	-0.077	-0.077	0.008	0.009	-0.094	-0.061	0.006	0.005	0.009	0.010	-0.014	0.026	-0.081	-0.081	0.009	0.010	-0.099	-0.061
$\tau_{2,Q}$	0.138	0.141	0.007	0.011	0.120	0.164	0.114	0.114	0.006	0.007	0.100	0.128	0.153	0.153	0.007	0.007	0.140	0.166	0.110	0.110	0.006	0.007	0.096	0.125
$\sigma_{\mu,Q}^2$	0.363	0.362	0.008	0.010	0.342	0.382	0.272	0.271	0.006	0.009	0.254	0.291	0.325	0.324	0.007	0.010	0.305	0.345	0.290	0.289	0.006	0.008	0.274	0.305
ρ	0.911	0.911	0.003	0.003	0.905	0.916	0.927	0.927	0.002	0.003	0.921	0.932	0.931	0.931	0.002	0.002	0.927	0.936	0.946	0.946	0.002	0.002	0.942	0.950
v	9.161	9.257	0.215	1.430	7.136	12.820	12.152	12.568	1.862	2.365	9.179	18.831	7.303	7.399	0.675	0.789	6.013	9.220	8.850	9.042	0.364	1.239	7.104	11.717

Coef: estimated coefficient; μ_B : mean of Bootstrap estimates; SE: asymptotic standard error ; SE.B: standard error of Bootstrap estimates; $q_{0.025}$: 2.5% Bootstrap percentile; $q_{0.975}$: 97.5% Bootstrap percentile.

Table 6: Model specifications for robustness check

Model	β_t equation	γ_t equation	Error distribution
TV-RGARCH*	$\beta_t = \beta + \beta_1 (Y_{t-1})$	$\gamma_t = \gamma + \gamma_1 (Y_{t-1})$	$\mathbf{u}_t \sim MVN_2(0, \Sigma_u)$
TV-RGARCH*-S	$\beta_t = \beta + \beta_1 (\sqrt{Y_{t-1}})$	$\gamma_t = \gamma + \gamma_1 (\sqrt{Y_{t-1}})$	$\mathbf{u}_t \sim MVN_2(0, \Sigma_u)$
TV-RGARCH*-S2	$\beta_t = \beta + \beta_1 (Y_{t-1})^2$	$\gamma_t = \gamma + \gamma_1 (Y_{t-1})^2$	$\mathbf{u}_t \sim MVN_2(0, \Sigma_u)$
TV-RGARCH*-2	$\beta_t = \beta + \beta_1 (Y_{t-1})^{\beta_2}$	$\gamma_t = \gamma + \gamma_1 (Y_{t-1})^{\gamma_2}$	$\mathbf{u}_t \sim MVN_2(0, \Sigma_u)$

Table 7: Predictive Partial log-likelihood ($\hat{\ell}_r$) and MCS p-values using both Range (p-value R) and Semi-Quadratic (p-value SQ) statistics. For each stock in **bold** the highest maximized log-likelihood value, in **box** models \in 90% MCS and in **box** models \in 75% MCS. The out-of-sample period for the stock market indices is 2008/06/01 – 2018/04/30, for a total of 2492 for DAX 30, 2473 for FTSE 100, 2396 for Hang Seng and 2456 for S&P 500.

	DAX 30			FTSE 100			HSI			S&P 500		
	$\hat{\ell}_r$	p-value R	p-value SQ	$\hat{\ell}_r$	p-value R	p-value SQ	$\hat{\ell}_r$	p-value R	p-value SQ	$\hat{\ell}_r$	p-value R	p-value SQ
RGARCH	8070.297	0.0002	0.0044	8668.795	0.0266	0.0674	8175.131	0.0840	0.0394	8856.416	0.1236	0.2352
TV-RGARCH*-S2	8079.344	0.7550	0.7062	8676.778	0.8720	0.8566	8181.348	0.3012	0.1780	8860.155	0.7496	0.6716
TV-RGARCH*-S	8079.940	0.8546	0.7914	8677.034	0.8720	0.8566	8182.594	0.4852	0.3628	8860.901	0.7960	0.8566
TV-RGARCH*-2	8079.059	0.1378	0.3638	8676.838	0.8652	0.8566	8182.614	0.3012	0.3134	8860.358	0.7496	0.7164
TV-RGARCH*	8079.773	0.8546	0.7914	8677.070	0.8720	0.8566	8182.023	0.1504	0.1352	8860.609	0.7496	0.7164
TV-RGARCH	8079.530	0.3694	0.6176	8676.870	0.8652	0.8566	8182.835	0.4852	0.3628	8861.089	0.9914	0.9914
ETV-RGARCH	8080.683	1.0000	1.0000	8677.526	1.0000	1.0000	8183.642	1.0000	1.0000	8861.099	1.0000	1.0000

Table 8: Average values of QLIKE loss using 5-min RV as volatility proxy and MCS p-values using both Range (p-value R) and Semi-Quadratic (p-value SQ) statistics. For each stock in **bold** minimum loss, in **box** models \in 90% MCS and in **box** models \in 75% MCS. The out-of-sample period for the stock market indices is 2008/06/01 – 2018/04/30, for a total of 2492 for DAX 30, 2473 for FTSE 100, 2396 for Hang Seng and 2456 for S&P 500.

	DAX 30			FTSE 100			HSI			S&P 500		
	Average	p-value R	p-value SQ	Average	p-value R	p-value SQ	Average	p-value R	p-value SQ	Average	p-value R	p-value SQ
RGARCH	-8.2741	0.0004	0.0016	-9.0421	0.0412	0.0732	-8.8664	0.0004	0.0018	-9.0741	0.0538	0.0546
TV-RGARCH*-S2	-8.2780	0.1170	0.1202	-9.0462	1.0000	1.0000	-8.8797	0.0074	0.0068	-9.0771	0.1654	0.1274
TV-RGARCH*-S	-8.2787	0.1580	0.1490	-9.0458	0.2040	0.4238	-8.8821	0.0076	0.0068	-9.0780	0.2058	0.1554
TV-RGARCH*-2	-8.2786	0.1580	0.1490	-9.0455	0.2040	0.2770	-8.8825	0.0076	0.0084	-9.0765	0.1674	0.1390
TV-RGARCH*	-8.2785	0.1580	0.1490	-9.0461	0.8480	0.7760	-8.8812	0.0074	0.0068	-9.0777	0.1908	0.1554
TV-RGARCH	-8.2787	0.1580	0.1490	-9.0455	0.1886	0.2300	-8.8826	0.0076	0.0084	-9.0782	0.2058	0.1554
ETV-RGARCH	-8.2814	1.0000	1.0000	-9.0458	0.8480	0.7760	-8.8853	1.0000	1.0000	-9.0797	1.0000	1.0000

Table 9: One-step ahead Value at Risk backtesting at the risk level $\alpha = 0.01$. *VRate* shows the Violation Rate as proportion of returns smaller than VaR during the forecast period at the risk level of 1%. *CC p-value* and *DQ p-value* report the p-values for the Conditional Coverage test and Dynamic Quantile test, respectively. In **bold** models showing the Violation Rate closest to the assumed nominal value. Boxes indicate p-values lower than 5%. The out-of-sample period for the stock market indices is 2008/06/01 – 2018/04/30, for a total of 2492 for DAX 30, 2473 for FTSE 100, 2396 for Hang Seng and 2456 for S&P 500.

	DAX 30			FTSE 100			HSI			S&P 500		
	VRate	CC p-value	DQ p-value	VRate	CC p-value	DQ p-value	VRate	CC p-value	DQ p-value	VRate	CC p-value	DQ p-value
RGARCH	0.0132	0.1932	0.3669	0.0125	0.3365	0.0598	0.0134	0.1890	0.3133	0.0159	0.0140	0.0156
TV-RGARCH [*] -S2	0.0112	0.6046	0.6912	0.0113	0.5006	0.0471	0.0117	0.5181	0.4681	0.0147	0.0556	0.0664
TV-RGARCH [*] -S	0.0116	0.5158	0.6352	0.0117	0.4554	0.5392	0.0121	0.4243	0.4360	0.0147	0.0556	0.0702
TV-RGARCH [*] -2	0.0116	0.5158	0.6359	0.0121	0.3988	0.6166	0.0121	0.4243	0.4335	0.0143	0.0832	0.1100
TV-RGARCH [*]	0.0116	0.5158	0.6327	0.0113	0.5006	0.6129	0.0117	0.5181	0.4698	0.0147	0.0556	0.0690
TV-RGARCH-S	0.0116	0.5158	0.6351	0.0117	0.4554	0.5413	0.0121	0.4243	0.4377	0.0147	0.0556	0.0708
ETV-RGARCH	0.0128	0.2596	0.5031	0.0121	0.3988	0.4762	0.0121	0.4243	0.4591	0.0155	0.0228	0.0405

Table 10: One-step ahead Value at Risk backtesting at the risk level $\alpha = 0.025$. *VRate* shows the Violation Rate as proportion of returns smaller than VaR during the forecast period at the risk level of 2.5%. *CC p-value* and *DQ p-value* report the p-values for the Conditional Coverage test and Dynamic Quantile test, respectively. In **bold** models showing the Violation Rate closest to the assumed nominal value. Boxes indicate p-values lower than 5%. The out-of-sample period for the stock market indices is 2008/06/01 – 2018/04/30, for a total of 2492 for DAX 30, 2473 for FTSE 100, 2396 for Hang Seng and 2456 for S&P 500.

	DAX 30			FTSE 100			HSI			S&P 500		
	VRate	CC p-value	DQ p-value	VRate	CC p-value	DQ p-value	VRate	CC p-value	DQ p-value	VRate	CC p-value	DQ p-value
RGARCH	0.0321	0.0901	0.0069	0.0295	0.1906	0.0889	0.0263	0.5778	0.9433	0.0293	0.4094	0.7492
TV-RGARCH [*] -S2	0.0289	0.4772	0.2694	0.0275	0.2759	0.5183	0.0275	0.2577	0.6865	0.0281	0.6280	0.8063
TV-RGARCH [*] -S	0.0293	0.4070	0.2405	0.0263	0.6028	0.7301	0.0275	0.2577	0.5997	0.0281	0.6280	0.8178
TV-RGARCH [*] -2	0.0297	0.3418	0.2222	0.0259	0.9287	0.8624	0.0275	0.2577	0.6001	0.0281	0.6280	0.8227
TV-RGARCH [*]	0.0293	0.4070	0.2389	0.0271	0.2819	0.5128	0.0271	0.2627	0.7164	0.0281	0.6280	0.8146
TV-RGARCH	0.0301	0.2825	0.2583	0.0259	0.9287	0.8626	0.0275	0.2577	0.6045	0.0281	0.6280	0.8198
ETV-RGARCH	0.0305	0.1427	0.2238	0.0271	0.7978	0.8649	0.0259	0.2484	0.5682	0.0289	0.4799	0.8336

Table 11: Average Quantile Loss function at the risk level $\alpha = 0.01$ and MCS p-values using both Range (p-value R) and Semi-Quadratic (p-value SQ) statistics. For each stock in **bold** minimum loss, in **box** models \in 90% MCS and in **box** models \in 75% MCS. The out-of-sample period for the stock market indices is 2008/06/01 – 2018/04/30, for a total of 2492 for DAX 30, 2473 for FTSE 100, 2396 for Hang Seng and 2456 for S&P 500.

	DAX 30			FTSE 100			HSI			S&P 500		
	Average	p-value R	p-value SQ	Average	p-value R	p-value SQ	Average	p-value R	p-value SQ	Average	p-value R	p-value SQ
RGARCH	0.7984	0.1058	0.2030	0.6214	0.0004	0.0024	0.7134	0.1168	0.2192	0.6295	0.0014	0.0010
TV-RGARCH [*] -S2	0.7899	0.7684	0.6698	0.6100	0.4922	0.4946	0.7076	0.2470	0.3192	0.6224	0.0014	0.0018
TV-RGARCH [*] -S	0.7886	1.0000	1.0000	0.6087	1.0000	1.0000	0.7067	0.4184	0.3520	0.6193	0.1732	0.2430
TV-RGARCH [*] -2	0.7892	0.7684	0.6698	0.6093	0.4998	0.5628	0.7076	0.2470	0.2932	0.6188	0.6834	0.6834
TV-RGARCH [*]	0.7892	0.7684	0.6698	0.6089	0.7768	0.7768	0.7075	0.2470	0.2932	0.6204	0.0014	0.0046
TV-RGARCH	0.7889	0.7684	0.6698	0.6093	0.4998	0.5628	0.7062	0.4184	0.3520	0.6186	1.0000	1.0000
ETV-RGARCH	0.7950	0.6656	0.5460	0.6119	0.4854	0.3806	0.7038	1.0000	1.0000	0.6229	0.0014	0.0046

Table 12: Average Quantile Loss function at the risk level $\alpha = 0.025$ and MCS p-values using both Range (p-value R) and Semi-Quadratic (p-value SQ) statistics. For each stock in **bold** minimum loss, in **box** models $\in 90\%$ MCS and in **box** models $\in 75\%$ MCS. The out-of-sample period for the stock market indices is 2008/06/01 – 2018/04/30, for a total of 2492 for DAX 30, 2473 for FTSE 100, 2396 for Hang Seng and 2456 for S&P 500.

	DAX 30			FTSE 100			HSI			S&P 500		
	Average	p-value R	p-value SQ	Average	p-value R	p-value SQ	Average	p-value R	p-value SQ	Average	p-value R	p-value SQ
RGARCH	1.7258	0.0022	0.0350	1.3221	0.0094	0.0140	1.4184	0.0500	0.0430	1.3164	0.0014	0.0002
TV-RGARCH [*] -S2	1.7065	0.5556	0.6260	1.3089	0.3106	0.3950	1.4011	0.1056	0.1022	1.2997	0.0092	0.0166
TV-RGARCH [*] -S	1.7047	1.0000	1.0000	1.3053	1.0000	1.0000	1.3963	0.1056	0.2172	1.2951	0.2748	0.2908
TV-RGARCH [*] -2	1.7052	0.8234	0.8496	1.3059	0.7922	0.6484	1.3963	0.1056	0.2172	1.2932	1.0000	1.0000
TV-RGARCH [*]	1.7049	0.8368	0.8496	1.3061	0.7922	0.6484	1.3981	0.1056	0.1304	1.2966	0.0368	0.0592
TV-RGARCH	1.7056	0.5556	0.6260	1.3057	0.7922	0.6484	1.3950	0.5488	0.5488	1.2941	0.4624	0.4624
ETV-RGARCH	1.7185	0.2594	0.2914	1.3074	0.7922	0.6484	1.3925	1.0000	1.0000	1.2967	0.2748	0.2908

Table 13: Average FZ loss function at the risk level $\alpha = 0.01$ and MCS p-values using both Range (p-value R) and Semi-Quadratic (p-value SQ) statistics. For each stock in **bold** minimum loss, in **box** models $\in 90\%$ MCS and in **box** models $\in 75\%$ MCS. The out-of-sample period for the stock market indices is 2008/06/01 – 2018/04/30, for a total of 2492 for DAX 30, 2473 for FTSE 100, 2396 for Hang Seng and 2456 for S&P 500.

	DAX 30			FTSE 100			HSI			S&P 500		
	Average	p-value R	p-value SQ	Average	p-value R	p-value SQ	Average	p-value R	p-value SQ	Average	p-value R	p-value SQ
RGARCH	-3.4690	0.0002	0.0818	-3.7516	0.0008	0.0106	-3.5748	0.1208	0.1566	-3.7224	0.0124	0.0264
TV-RGARCH [*] -S2	-3.4834	0.3670	0.4266	-3.7732	0.5256	0.5238	-3.5872	0.5370	0.5156	-3.7327	0.0124	0.0220
TV-RGARCH [*] -S	-3.4868	0.5458	0.5458	-3.7766	1.0000	1.0000	-3.5891	0.5370	0.5156	-3.7387	0.0880	0.1518
TV-RGARCH [*] -2	-3.4858	0.3670	0.4514	-3.7761	0.8300	0.8234	-3.5880	0.1208	0.3898	-3.7386	0.3682	0.2574
TV-RGARCH [*]	-3.4855	0.3670	0.4514	-3.7760	0.8300	0.8234	-3.5880	0.1208	0.3898	-3.7362	0.0124	0.0264
TV-RGARCH	-3.4864	0.5310	0.5306	-3.7756	0.5562	0.6646	-3.5897	0.5370	0.5156	-3.7407	0.3682	0.2574
ETV-RGARCH	-3.4918	1.0000	1.0000	-3.7751	0.8300	0.8234	-3.5934	1.0000	1.0000	-3.7475	1.0000	1.0000

Table 14: Average FZ loss function at the risk level $\alpha = 0.025$ and MCS p-values using both Range (p-value R) and Semi-Quadratic (p-value SQ) statistics. For each stock in **bold** minimum loss, in **box** models $\in 90\%$ MCS and in **box** models $\in 75\%$ MCS. The out-of-sample period for the stock market indices is 2008/06/01 – 2018/04/30, for a total of 2492 for DAX 30, 2473 for FTSE 100, 2396 for Hang Seng and 2456 for S&P 500.

	DAX 30			FTSE 100			HSI			S&P 500		
	Average	p-value R	p-value SQ	Average	p-value R	p-value SQ	Average	p-value R	p-value SQ	Average	p-value R	p-value SQ
RGARCH	-3.6346	0.0128	0.0850	-3.9302	0.0180	0.0232	-3.7916	0.0254	0.0304	-3.9322	0.0026	0.0016
TV-RGARCH [*] -S2	-3.6507	0.7078	0.7698	-3.9409	0.3416	0.3202	-3.8077	0.1280	0.1488	-3.9462	0.0098	0.0024
TV-RGARCH [*] -S	-3.6527	1.0000	1.0000	-3.9456	0.8370	0.8370	-3.8108	0.3742	0.2840	-3.9512	0.0550	0.0624
TV-RGARCH [*] -2	-3.6521	0.7078	0.8564	-3.9452	0.7824	0.8056	-3.8106	0.1280	0.1822	-3.9526	0.2100	0.2172
TV-RGARCH [*]	-3.6522	0.7078	0.8564	-3.9443	0.6018	0.6874	-3.8098	0.1280	0.1822	-3.9495	0.0098	0.0066
TV-RGARCH	-3.6521	0.7078	0.8564	-3.9451	0.7824	0.8056	-3.8115	0.3742	0.2840	-3.9524	0.2100	0.2172
ETV-RGARCH	-3.6515	0.7078	0.8564	-3.9460	1.0000	1.0000	-3.8143	1.0000	1.0000	-3.9581	1.0000	1.0000

References

- Andersen, T. G., T. Bollerslev, F. X. Diebold, and P. Labys (2001). The distribution of realized exchange rate volatility. *Journal of the American statistical association* 96(453), 42–55.
- Barndorff-Nielsen, O. E. and N. Shephard (2002). Econometric analysis of realized volatility and its use in estimating stochastic volatility models. *Journal of the Royal Statistical Society: Series B (Statistical Methodology)* 64(2), 253–280.
- Bollerslev, T. (1988). On the correlation structure for the generalized autoregressive conditional heteroskedastic process. *Journal of Time Series Analysis* 9(2), 121–131.
- Bollerslev, T., A. J. Patton, and R. Quaedvlieg (2016). Exploiting the errors: A simple approach for improved volatility forecasting. *Journal of Econometrics* 192(1), 1–18.
- Borup, D. and J. S. Jakobsen (2019). Capturing volatility persistence: a dynamically complete realized egarch-midas model. *Quantitative Finance* 19(11), 1839–1855.
- Buccheri, G. and F. Corsi (2019, 08). HARK the SHARK: Realized Volatility Modeling with Measurement Errors and Nonlinear Dependencies*. *Journal of Financial Econometrics*. nbz025.
- Christoffersen, P. F. (1998). Evaluating interval forecasts. *International Economic Review* 39(4), 841–862.
- Corsi, F. (2009). A simple approximate long-memory model of realized volatility. *Journal of Financial Econometrics*, 174–196.
- Corsi, F., S. Mittnik, C. Pigorsch, and U. Pigorsch (2008). The volatility of realized volatility. *Econometric Reviews* 27(1-3), 46–78.
- Engle, R. (2002). New frontiers for arch models. *Journal of Applied Econometrics* 17(5), 425–446.
- Engle, R. F. and G. M. Gallo (2006). A multiple indicators model for volatility using intra-daily data. *Journal of Econometrics* 131(1), 3–27.
- Engle, R. F. and S. Manganelli (2004). Caviar: Conditional autoregressive value at risk by regression quantiles. *Journal of Business & Economic Statistics* 22(4), 367–381.
- Fissler, T. and J. F. Ziegel (2016). Higher order elicibility and Osband’s principle. *The Annals of Statistics* 44(4), 1680–1707.
- Hansen, P. and A. Lunde (2011). Forecasting volatility using high frequency data. *The Oxford Handbook of Economic Forecasting, Oxford: Blackwell*, 525–556.
- Hansen, P. R. and Z. Huang (2016). Exponential garch modeling with realized measures of volatility. *Journal of Business & Economic Statistics* 34(2), 269–287.

- Hansen, P. R., Z. Huang, and H. H. Shek (2012). Realized garch: a joint model for returns and realized measures of volatility. *Journal of Applied Econometrics* 27(6), 877–906.
- Hansen, P. R., A. Lunde, and J. M. Nason (2011). The model confidence set. *Econometrica* 79(2), 453–497.
- Koenker, R. (2005). *Quantile Regression*. Econometric Society Monographs. Cambridge University Press.
- Kristensen, D. and O. Linton (2006). A closed-form estimator for the garch(1,1) model. *Econometric Theory* 22(2), 323–337.
- Li, Y.-N., Y. Zhang, and C. Zhang (2019). Statistical inference for measurement equation selection in the log-realgarch model. *Econometric Theory* 35(5), 943–977.
- Liu, L. Y., A. J. Patton, and K. Sheppard (2015). Does anything beat 5-minute rv? a comparison of realized measures across multiple asset classes. *Journal of Econometrics* 187(1), 293–311.
- Paparoditis, E. and D. Politis (2009). *Handbook of Financial Time Series*, Chapter Resampling and Subsampling for Financial Time Series. Springer.
- Patton, A. (2011). Volatility forecast comparison using imperfect volatility proxies. *Journal of Econometrics* 160(1), 246–256.
- Patton, A. J., J. F. Ziegel, and R. Chen (2019). Dynamic semiparametric models for expected shortfall (and value-at-risk). *Journal of Econometrics* 211(2), 388–413.
- Shephard, N. and K. Sheppard (2010). Realising the future: forecasting with high-frequency-based volatility (heavy) models. *Journal of Applied Econometrics* 25(2), 197–231.
- Shephard, N. and D. Xiu (2016). Econometric analysis of multivariate realised qml: efficient positive semi-definite estimators of the covariation of equity prices.

Empirical Appendix

Table 15: Summary statistics

	DAX 30		FTSE 100		HSI		S&P 500	
	r_t	RV_t^\dagger	r_t	RV_t^\dagger	r_t	RV_t^\dagger	r_t	RV_t^\dagger
n.obs	4096	4096	4063	4063	3951	3951	4014	4014
Min	-0.071	0.035	-0.070	0.026	-0.132	0.039	-0.082	0.017
Max	0.092	67.627	0.088	58.520	0.095	40.069	0.074	57.833
Q1	-0.005	0.396	-0.004	0.172	-0.005	0.222	-0.004	0.181
Median	0.001	0.749	0.000	0.305	0.000	0.368	0.000	0.334
Q3	0.006	1.512	0.005	0.643	0.004	0.628	0.004	0.736
Mean	0.000	1.525	0.000	0.677	-0.001	0.661	0.000	0.814
Stdev	0.012	2.762	0.009	1.661	0.010	1.425	0.010	2.041
Skew	0.127	8.303	0.096	16.169	-0.220	13.531	-0.204	11.571
Kurt	5.216	123.868	8.403	430.361	15.997	275.734	9.306	214.716

Summary statistics of daily log-returns r_t and daily Realized Volatilities RV_t (\dagger : intra-daily returns $r_{t,i} \times 100$) for the stock market indices DAX 30, FTSE 100, Hang Seng and S&P500 for the full sample period 2002/01/01 – 2018/04/30. n.obs: number of observations for each series; Min: Minimum; Max: Maximum; Q1: First Quartile; Q3: Third Quartile; Median; Mean; Stdev: Standard deviation; Skew: Skewness; Kurt: Kurtosis.

Figure 7: Histograms and superimposed non-parametric densities of 999 standardized Bootstrap estimates of the parameters of the RGARCH model

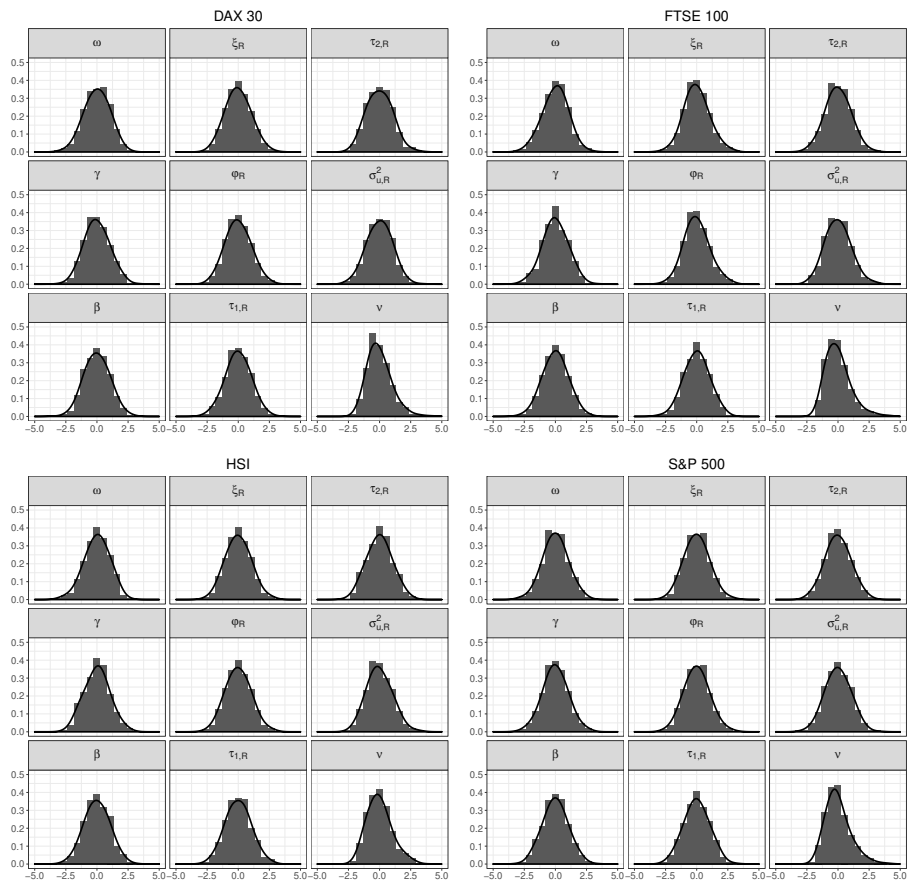


Figure 8: Histograms and superimposed non-parametric densities of 999 standardized Bootstrap estimates of the parameters of the TV-RGARCH model

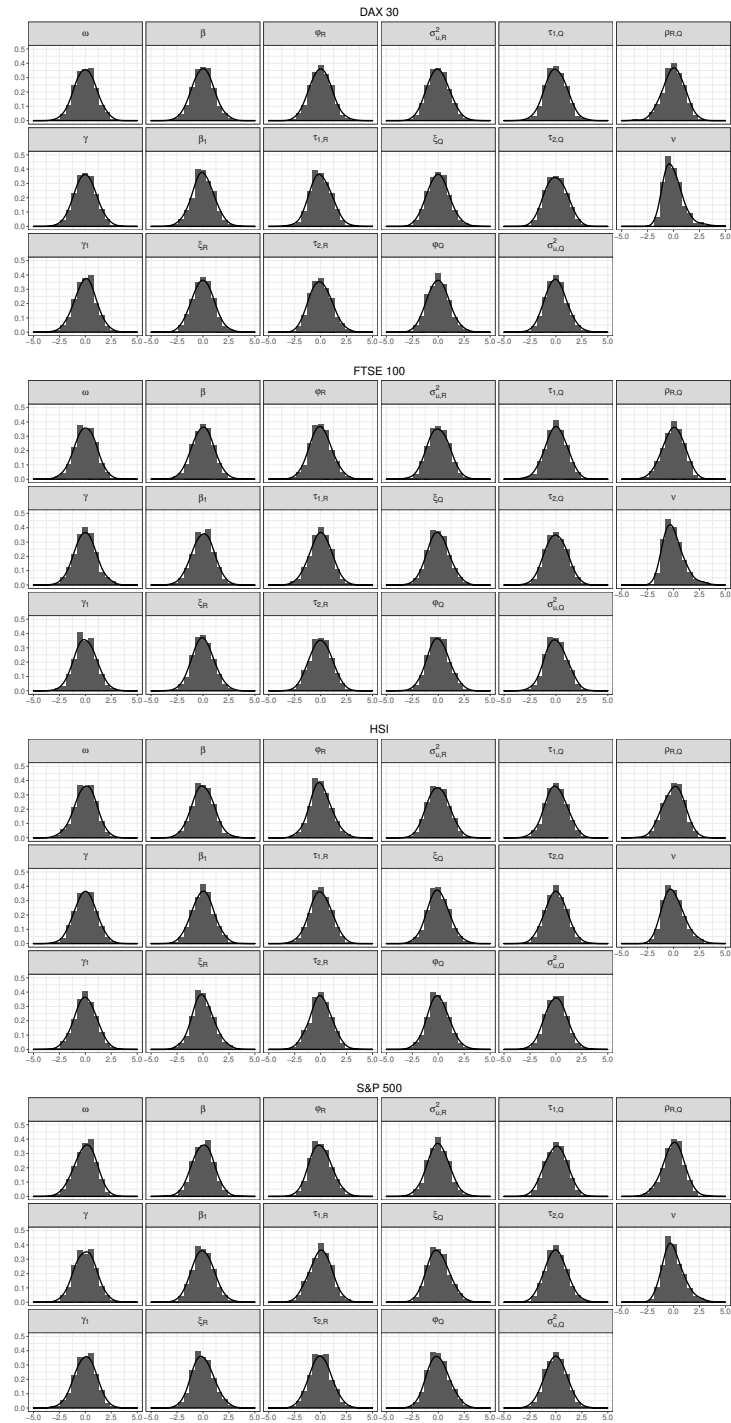


Table 16: Summary of Bootstrap estimates for the RGARCH model

	DAX 30						FTSE 100						HSI						S&P 500					
	Coef	μ_B	SE	SE.B	$q_{0.025}$	$q_{0.975}$	Coef	μ_B	SE	SE.B	$q_{0.025}$	$q_{0.975}$	Coef	μ_B	SE	SE.B	$q_{0.025}$	$q_{0.975}$	Coef	μ_B	SE	SE.B	$q_{0.025}$	$q_{0.975}$
ω	-0.171	-0.178	0.082	0.112	-0.393	0.029	-0.039	-0.046	0.089	0.110	-0.267	0.163	-0.096	-0.106	0.062	0.089	-0.296	0.050	-0.002	-0.014	0.109	0.123	-0.252	0.229
γ	0.362	0.362	0.016	0.017	0.331	0.394	0.363	0.363	0.016	0.016	0.330	0.392	0.226	0.226	0.013	0.013	0.202	0.253	0.479	0.478	0.019	0.018	0.443	0.514
β	0.614	0.614	0.015	0.013	0.590	0.640	0.619	0.618	0.015	0.013	0.593	0.642	0.752	0.752	0.014	0.012	0.729	0.774	0.508	0.508	0.017	0.014	0.481	0.536
ζ_R	-0.068	-0.064	0.213	0.284	-0.589	0.510	-0.401	-0.401	0.225	0.278	-0.921	0.169	-0.257	-0.239	0.243	0.356	-0.896	0.505	-0.629	-0.614	0.205	0.228	-1.031	-0.152
φ_R	1.008	1.008	0.023	0.030	0.952	1.070	1.000	1.000	0.023	0.028	0.947	1.058	1.023	1.025	0.025	0.037	0.957	1.100	0.963	0.965	0.021	0.023	0.922	1.013
$\tau_{1,R}$	-0.135	-0.135	0.008	0.008	-0.152	-0.119	-0.087	-0.088	0.007	0.007	-0.101	-0.074	0.002	0.002	0.007	0.008	-0.013	0.017	-0.107	-0.107	0.008	0.008	-0.122	-0.092
$\tau_{2,R}$	0.107	0.109	0.005	0.008	0.095	0.124	0.100	0.100	0.005	0.006	0.088	0.112	0.141	0.142	0.006	0.006	0.131	0.153	0.099	0.099	0.005	0.006	0.088	0.111
$\sigma_{\mu,R}^2$	0.219	0.219	0.005	0.006	0.207	0.231	0.181	0.180	0.004	0.006	0.170	0.192	0.212	0.211	0.005	0.007	0.199	0.225	0.234	0.234	0.005	0.006	0.222	0.246
ν	8.696	8.923	0.811	1.347	6.797	12.012	11.565	11.944	0.520	2.084	8.913	17.064	7.049	7.169	0.342	0.731	5.976	8.778	8.493	8.704	0.258	1.200	6.840	11.553

Coef: estimated coefficient; μ_B : mean of Bootstrap estimates; SE: asymptotic standard error ; SE.B: standard error of Bootstrap estimates; $q_{0.025}$: 2.5% Bootstrap percentile; $q_{0.975}$: 97.5% Bootstrap percentile.

Table 17: Summary of Bootstrap estimates for the TV-RGARCH model

	DAX 30						FTSE 100						HSI						S&P 500					
	Coef	μ_B	SE	SE.B	$q_{0.025}$	$q_{0.975}$	Coef	μ_B	SE	SE.B	$q_{0.025}$	$q_{0.975}$	Coef	μ_B	SE	SE.B	$q_{0.025}$	$q_{0.975}$	Coef	μ_B	SE	SE.B	$q_{0.025}$	$q_{0.975}$
ω	-0.352	-0.351	0.096	0.137	-0.622	-0.086	-0.090	-0.093	0.100	0.117	-0.322	0.129	-0.262	-0.276	0.076	0.102	-0.489	-0.084	-0.157	-0.166	0.111	0.131	-0.426	0.068
γ	0.471	0.470	0.022	0.024	0.424	0.519	0.442	0.443	0.022	0.021	0.403	0.486	0.304	0.302	0.018	0.019	0.267	0.338	0.546	0.544	0.021	0.022	0.502	0.586
γ_1	-0.134	-0.132	0.034	0.037	-0.205	-0.061	-0.113	-0.113	0.043	0.042	-0.193	-0.030	-0.126	-0.125	0.035	0.037	-0.197	-0.056	-0.214	-0.215	0.057	0.060	-0.334	-0.106
β	0.474	0.474	0.022	0.020	0.435	0.516	0.523	0.521	0.021	0.018	0.486	0.556	0.646	0.647	0.019	0.017	0.613	0.681	0.419	0.419	0.020	0.019	0.382	0.455
β_1	0.166	0.165	0.034	0.037	0.092	0.238	0.148	0.149	0.044	0.043	0.065	0.228	0.159	0.157	0.036	0.038	0.084	0.233	0.250	0.251	0.058	0.060	0.140	0.370
ξ_R	0.008	0.004	0.210	0.295	-0.561	0.592	-0.385	-0.394	0.221	0.253	-0.876	0.121	-0.380	-0.348	0.251	0.319	-0.980	0.329	-0.557	-0.555	0.188	0.226	-0.981	-0.082
Φ_R	1.015	1.015	0.023	0.032	0.955	1.077	1.001	1.000	0.022	0.026	0.951	1.053	1.010	1.013	0.026	0.033	0.947	1.082	0.970	0.970	0.019	0.023	0.928	1.017
$\tau_{1,R}$	-0.133	-0.134	0.007	0.008	-0.148	-0.118	-0.089	-0.090	0.007	0.007	-0.104	-0.076	0.003	0.003	0.007	0.008	-0.013	0.018	-0.107	-0.108	0.008	0.008	-0.123	-0.092
$\tau_{2,R}$	0.108	0.109	0.005	0.007	0.097	0.123	0.098	0.098	0.005	0.006	0.087	0.110	0.140	0.140	0.006	0.006	0.129	0.150	0.099	0.099	0.005	0.006	0.088	0.111
$\sigma_{u,R}^2$	0.213	0.212	0.005	0.006	0.202	0.223	0.177	0.176	0.004	0.005	0.166	0.187	0.208	0.208	0.005	0.007	0.195	0.221	0.231	0.231	0.005	0.006	0.219	0.242
ξ_Q	-0.015	-0.014	0.208	0.285	-0.556	0.563	-0.289	-0.297	0.221	0.251	-0.775	0.195	-0.817	-0.785	0.249	0.298	-1.351	-0.150	-0.767	-0.766	0.182	0.223	-1.165	-0.311
φ_Q	0.979	0.979	0.022	0.030	0.922	1.040	0.984	0.984	0.022	0.025	0.935	1.034	0.936	0.939	0.026	0.031	0.879	1.002	0.933	0.933	0.018	0.022	0.893	0.978
$\tau_{1,Q}$	-0.115	-0.115	0.010	0.012	-0.138	-0.092	-0.077	-0.077	0.008	0.009	-0.095	-0.059	0.006	0.006	0.009	0.010	-0.015	0.026	-0.080	-0.081	0.009	0.010	-0.100	-0.062
$\tau_{2,Q}$	0.137	0.140	0.007	0.011	0.119	0.161	0.114	0.115	0.006	0.008	0.101	0.130	0.153	0.153	0.007	0.007	0.140	0.166	0.110	0.110	0.006	0.008	0.096	0.126
$\sigma_{u,Q}^2$	0.366	0.365	0.008	0.010	0.346	0.385	0.273	0.273	0.006	0.009	0.255	0.290	0.326	0.326	0.007	0.010	0.306	0.346	0.291	0.291	0.007	0.008	0.276	0.306
ρ	0.911	0.911	0.003	0.003	0.905	0.917	0.927	0.927	0.002	0.003	0.922	0.932	0.932	0.932	0.002	0.002	0.927	0.937	0.946	0.946	0.002	0.002	0.942	0.950
ν	8.947	9.166	0.377	1.478	7.119	12.989	11.882	12.268	0.278	2.206	9.055	17.743	6.998	7.277	0.351	0.771	5.987	9.053	8.819	9.027	0.362	1.153	7.175	11.751

Coef: estimated coefficient; μ_B : mean of Bootstrap estimates; SE: asymptotic standard error ; SE.B: standard error of Bootstrap estimates; $q_{0.025}$: 2.5% Bootstrap percentile; $q_{0.975}$: 97.5% Bootstrap percentile.

Table 18: In-sample estimation results for TV-RGARCH and ETV-RGARCH with time-varying variance of the measurement error $u_{R,t}$.

	DAX 30				FTSE 100				HSI				S&P 500			
	TV-HRG	TV-HRG*	ETV-HRG	ETV-HRG*	TV-HRG	TV-HRG*	ETV-HRG	ETV-HRG*	TV-HRG	TV-HRG*	ETV-HRG	ETV-HRG*	TV-HRG	TV-HRG*	ETV-HRG	ETV-HRG*
ω	-0.345 (0.070)	-0.345 (0.095)	-0.078 (0.435)	-0.090 (0.342)	-0.094 (0.102)	-0.093 (0.093)	0.149 (0.409)	0.155 (0.386)	-0.259 (0.065)	-0.257 (0.066)	0.271 (0.571)	0.272 (0.687)	-0.157 (0.127)	-0.157 (0.105)	1.083 (0.329)	1.083 (0.311)
γ	0.472 (0.020)	0.472 (0.022)	1.075 (0.113)	1.073 (0.110)	0.442 (0.022)	0.442 (0.022)	0.853 (0.119)	0.856 (0.118)	0.301 (0.018)	0.301 (0.018)	0.675 (0.095)	0.675 (0.101)	0.545 (0.022)	0.545 (0.021)	0.797 (0.128)	0.797 (0.120)
γ_1	-0.136 (0.035)	-0.136 (0.035)	-0.199 (0.038)	-0.199 (0.037)	-0.113 (0.041)	-0.113 (0.042)	-0.201 (0.049)	-0.201 (0.049)	-0.119 (0.034)	-0.120 (0.034)	-0.157 (0.035)	-0.158 (0.035)	-0.212 (0.058)	-0.211 (0.058)	-0.208 (0.060)	-0.207 (0.059)
γ_2	-	-	0.257 (0.044)	0.257 (0.043)	-	-	0.237 (0.055)	0.238 (0.056)	-	-	0.189 (0.039)	0.189 (0.039)	-	-	0.220 (0.064)	0.219 (0.063)
β	0.473 (0.022)	0.473 (0.022)	-0.074 (0.142)	-0.074 (0.132)	0.523 (0.021)	0.522 (0.021)	0.155 (0.142)	0.153 (0.146)	0.650 (0.019)	0.650 (0.019)	0.374 (0.142)	0.374 (0.146)	0.419 (0.020)	0.419 (0.020)	0.419 (0.130)	0.419 (0.126)
β_1	0.168 (0.034)	0.169 (0.035)	0.231 (0.037)	0.231 (0.037)	0.149 (0.042)	0.149 (0.043)	0.238 (0.050)	0.239 (0.050)	0.152 (0.035)	0.152 (0.035)	0.191 (0.036)	0.191 (0.037)	0.248 (0.059)	0.247 (0.059)	0.245 (0.061)	0.244 (0.060)
β_2	-	-	-0.287 (0.045)	-0.287 (0.043)	-	-	-0.273 (0.056)	-0.273 (0.057)	-	-	-0.218 (0.041)	-0.219 (0.041)	-	-	-0.245 (0.065)	-0.244 (0.064)
ξ_R	0.000 (0.134)	-0.002 (0.208)	0.025 (0.240)	0.025 (0.186)	-0.389 (0.229)	-0.391 (0.204)	-0.281 (0.253)	-0.282 (0.230)	-0.381 (0.197)	-0.386 (0.200)	-0.392 (0.260)	-0.396 (0.329)	-0.558 (0.221)	-0.559 (0.160)	-0.628 (0.214)	-0.628 (0.182)
φ_R	1.014 (0.016)	1.014 (0.022)	1.017 (0.026)	1.017 (0.020)	1.001 (0.023)	1.001 (0.021)	1.011 (0.026)	1.011 (0.023)	1.010 (0.020)	1.009 (0.021)	1.008 (0.027)	1.008 (0.034)	0.970 (0.022)	0.970 (0.015)	0.963 (0.021)	0.963 (0.018)
$\tau_{1,R}$	-0.133 (0.007)	-0.133 (0.007)	-0.134 (0.007)	-0.134 (0.007)	-0.089 (0.007)	-0.089 (0.007)	-0.090 (0.007)	-0.089 (0.007)	0.004 (0.007)	0.004 (0.007)	0.004 (0.007)	0.004 (0.007)	-0.107 (0.008)	-0.107 (0.008)	-0.108 (0.008)	-0.108 (0.008)
$\tau_{2,R}$	0.108 (0.005)	0.108 (0.005)	0.107 (0.005)	0.107 (0.005)	0.098 (0.005)	0.098 (0.005)	0.097 (0.005)	0.097 (0.005)	0.140 (0.006)	0.140 (0.006)	0.141 (0.006)	0.141 (0.006)	0.099 (0.005)	0.099 (0.005)	0.099 (0.005)	0.099 (0.005)
δ_0	-1.598 (0.042)	-1.572 (0.027)	-1.615 (0.042)	-1.581 (0.026)	-1.656 (0.045)	-1.706 (0.026)	-1.679 (0.046)	-1.716 (0.026)	-1.479 (0.048)	-1.538 (0.026)	-1.473 (0.048)	-1.541 (0.026)	-1.459 (0.048)	-1.463 (0.024)	-1.459 (0.049)	-1.467 (0.024)
δ_1	0.035 (0.025)	0.074 (0.044)	0.041 (0.025)	0.079 (0.044)	-0.058 (0.029)	-0.100 (0.050)	-0.043 (0.030)	-0.082 (0.050)	-0.067 (0.031)	-0.114 (0.048)	-0.076 (0.031)	-0.127 (0.048)	-0.006 (0.036)	-0.017 (0.050)	-0.010 (0.036)	-0.022 (0.051)
ξ_Q	-0.021 (0.130)	-0.022 (0.205)	0.005 (0.234)	0.005 (0.182)	-0.296 (0.228)	-0.297 (0.204)	-0.187 (0.251)	-0.188 (0.229)	-0.813 (0.195)	-0.817 (0.198)	-0.811 (0.251)	-0.815 (0.315)	-0.768 (0.215)	-0.769 (0.152)	-0.834 (0.208)	-0.834 (0.176)
φ_Q	0.978 (0.016)	0.978 (0.022)	0.980 (0.025)	0.980 (0.020)	0.984 (0.023)	0.984 (0.021)	0.994 (0.025)	0.994 (0.023)	0.937 (0.020)	0.936 (0.020)	0.936 (0.026)	0.936 (0.032)	0.933 (0.022)	0.933 (0.014)	0.926 (0.021)	0.926 (0.018)
$\tau_{1,Q}$	-0.115 (0.010)	-0.115 (0.010)	-0.115 (0.010)	-0.115 (0.010)	-0.076 (0.008)	-0.076 (0.008)	-0.077 (0.008)	-0.077 (0.008)	0.007 (0.009)	0.007 (0.009)	0.006 (0.009)	0.006 (0.009)	-0.080 (0.009)	-0.080 (0.009)	-0.081 (0.009)	-0.081 (0.009)
$\tau_{2,Q}$	0.137 (0.006)	0.137 (0.007)	0.137 (0.007)	0.138 (0.007)	0.115 (0.006)	0.115 (0.006)	0.114 (0.006)	0.114 (0.006)	0.153 (0.007)	0.153 (0.007)	0.153 (0.007)	0.153 (0.007)	0.110 (0.006)	0.110 (0.005)	0.110 (0.006)	0.110 (0.006)
$\sigma_{u,Q}^2$	0.366 (0.008)	0.366 (0.008)	0.363 (0.008)	0.363 (0.008)	0.273 (0.006)	0.273 (0.006)	0.272 (0.006)	0.272 (0.006)	0.326 (0.007)	0.326 (0.007)	0.325 (0.007)	0.325 (0.007)	0.291 (0.007)	0.291 (0.007)	0.290 (0.006)	0.290 (0.006)
ρ	0.911 (0.003)	0.911 (0.003)	0.911 (0.003)	0.911 (0.003)	0.927 (0.002)	0.927 (0.002)	0.927 (0.002)	0.927 (0.002)	0.932 (0.002)	0.932 (0.002)	0.932 (0.002)	0.932 (0.002)	0.946 (0.002)	0.946 (0.002)	0.946 (0.002)	0.946 (0.002)
ν	8.935 (1.783)	8.936 (0.814)	9.146 (0.365)	9.140 (0.285)	11.886 (0.699)	11.889 (0.279)	12.130 (0.586)	12.145 (0.442)	7.139 (0.354)	7.139 (0.385)	7.295 (0.305)	7.296 (0.501)	8.808 (0.377)	8.811 (1.920)	8.850 (0.563)	8.850 (0.702)
ℓ_r	13223.361	13223.359	13227.531	13227.518	14281.794	14281.803	14284.034	14284.063	13528.720	13528.737	13532.400	13532.409	14257.275	14257.274	14258.011	14258.012
$\mathcal{L}(\theta)$	10464.304	10464.722	10482.557	10482.767	12897.490	12897.626	12904.855	12905.156	11641.340	11641.923	11652.579	11653.158	12816.422	12816.466	12828.086	12828.140

In-sample parameter estimates for the full sample period 2002/01/01 – 2018/04/30. Estimates refer to the TV-RGARCH (TV-RG) and ETV-RGARCH (ETV-RG) models which are based on the time-varying variance of the measurement error: $\sigma_{u_{R,t}}^2 = \exp\{\delta_0 + \delta_1 V(Y_{t-1})\}$. The function $V(\cdot)$ corresponds to the identity function for TV-(Heteroskedastic)RG and ETV-(Heteroskedastic)RG and the logarithm for TV-HRG* and ETV-HRG*. ℓ_r : partial log-likelihood. $\mathcal{L}(\theta)$: log-likelihood. Standard errors are reported in parenthesis below coefficient estimates. In bold parameters not significant at 5% level.